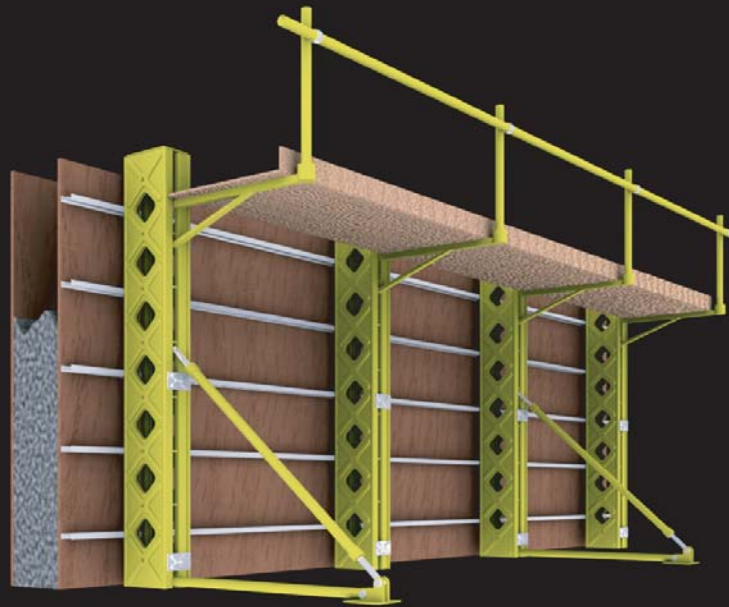


## 1. ADS HEAVY DUTY SOLDIER SYSTEM

The ADS Soldier is designed to be light weight but capable to handle immense loads. In applications with Aluminium Wallings, the system can be utilised to the optimum economies by increased spaces between the Soldiers thereby reducing the no of ties thus reducing the time required to erect / dismantle.

- Deflections can be minimized even when faced with high concrete pressures.
- Soldiers and Aluminium Walling combination enhances productivity by reducing the no of vertical elements in the formwork resulting in less No. of ties. Can also be utilized for Non-Formwork applications.
- Availability in different standard sizes optimizes adaptability.



## 2. WALL FORMS

ADS Soldiers used in combination with Aluminium Walers, afford economical solutions to simple as well as complex concrete structures. It also provides high resistance to concrete pressures whereby deflections are kept to within allowable limits thus saving costs in repair works.

This combination also allows ease in assembling and dismantling the formwork. The timber inserts in the Aluminium Walings provide easy fixing of the plywood.

The versatility of the Soldier system, allows the Soldier to be used as Heavy Duty inclined Propping when used with Left & Right Jacks in instances where the pour height is substantial. It can also be used as Vertical Heavy Duty Propping for Heavy Structures.

The 15mm Tie System with a SWL of 90kN optimises the full potential of the Soldier System.

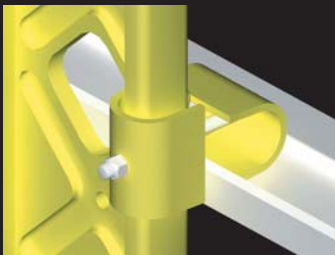
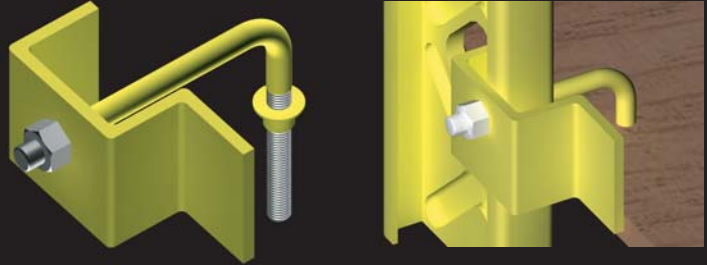
## 3. ADS HD SOLDIERS

Available in eight standard sizes, Non-standard sizes can also be made to order.



#### 4. TIMBER WALING CLAMPS

A very user friendly fixture used to connect Soldiers to Timber when it is used as walings.

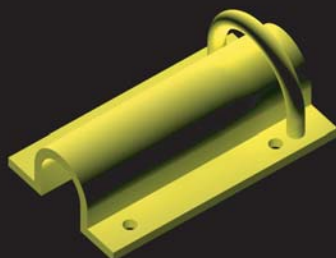
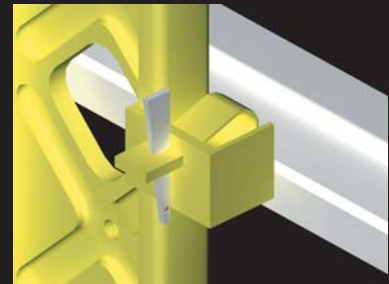


#### 5. UNIVERSAL CLAMPS

A quick-fix fixture to connect the Soldiers to Aluminium Walers by means of a 'T' Bolt & Nut.

#### 6. WEDGE CLAMPS

Another efficient connection between Soldier and Aluminium Walings, this clamp assembly uses a tightening wedge instead of a Nut & Bolt assembly.

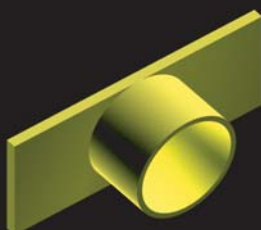


#### 7. LIFTING BRACKETS

A Soldier top end assembly usually two Nos. per shutter allows secure lifting of the Formwork.

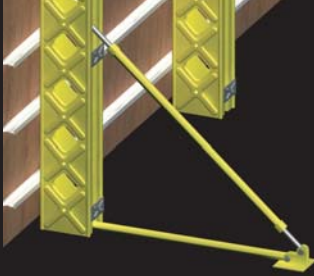
#### 8. SUPPORT PLATE

A Soldier bottom end assembly usually used at every lifting points (Two Nos. / Shutter) to strengthen the Walings by attaching timber wedges between the Aluminium Walers and Support Plate. It is also used as support bases on uneven grounds.



#### 9. END TIE WASHER

Used when the Formwork needs to be stabilized these bottom end assembly is fixed to the ground by means of a Base plate and Strut.

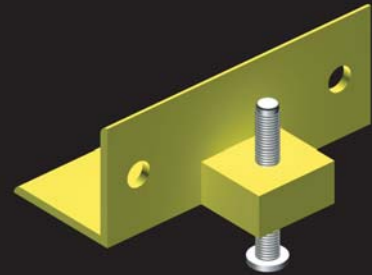


**10. STABILIZER**

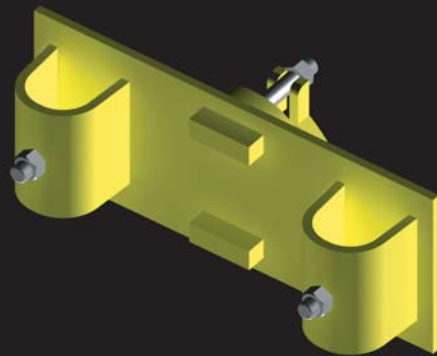
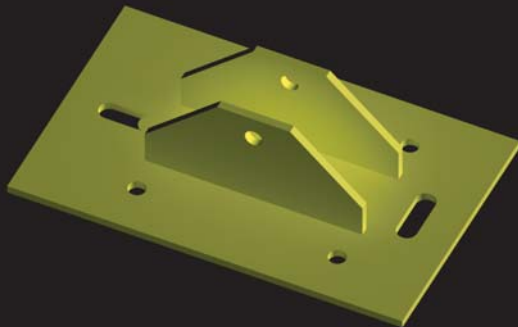
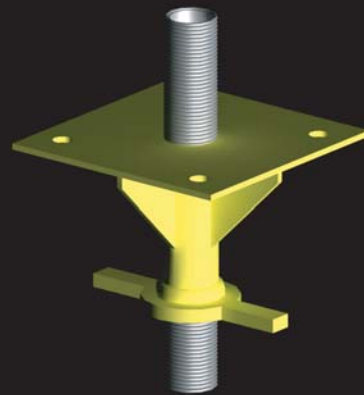
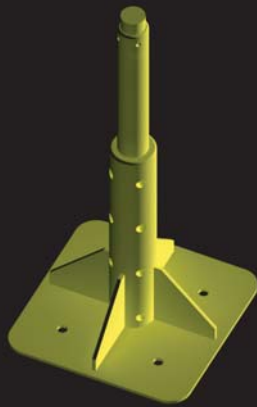
A triangular anchoring assembly, normally used when the Formwork need to be anchored securely.

**11. FORM JACK**

Used as a bottom end assembly, it helps in levelling the Formwork as well as acts as a plumbing device in Climbing Forms.



**SOLDIER ACCESSORIES**



Highly qualified personnel Design & Fabricate all special requirements for Formwork including Special Wallforms, Column Forms & Precast Moulds in our State-of-the-art facility.