

INSTALLATION INSTRUCTIONS

IMPORTANT!

STORE THE FLOORBOARDS AT ROOM TEMPERATURE FOR AT LEAST 48 HOURS, STILL IN THEIR PACKAGING, PRIOR TO COMMENCING WORK.

The room temperature must be at a minimum of 18°C (60°F) before and during installation. Relative humidity must be 40-60%. For floor surfaces exceeding 225 m² (2400 square feet) and/or lengths exceeding 15 m (50 feet) and overlaps to new rooms and floor surfaces which do not join symmetrically, use expansion joints to divide the floor sections.

1. PREPARATIONS

Alloc Commercial is to be installed as a floating floor, which means:

- The boards are not to be glued or tacked to the supporting floor or other fixed constructions
- Leave an expansion gap of app. 6-10 mm (min. 1/4 inch) around the perimeter of the room.

Remove old mouldings. Measure the room accurately, at right angles to the direction of the boards. The boards in the final row should be at least 5 cm (2 inches) wide. If necessary, the boards in the first row can be cut to a smaller size on their width.

Tools needed to install Alloc Commercial are a jig-saw or a fine toothed hand saw and spacer blocks.

Tip-off! Please contact us for advice if the humidity is extremely low in the room, where you are about to install the floor.

2. THE SUPPORTING FLOOR

Alloc Commercial can be installed on most existing floors, e.g. wooden floors, PVC and concrete floors. Wall-to-wall carpets need to be removed. Make sure that the surface is level, dry and even [max ± 2 mm per 2 m (max. 3/16 inch per 10 feet)]. The supporting floor needs to be thoroughly dried.

- Wooden and wood based material, max. 50% relative humidity
- Concrete and light concrete floor, max. 2,0 CM% (85 % relative humidity, 75% relative humidity according to UK measuring method)
- Plaster and plaster based floor, max. 0,5 CM%

The supporting floor must be carefully cleaned.

All types of concrete floors, light concrete floors or ceramics requires a moisture (vapor) barrier. This is also needed even if the moisture (vapor) barrier is integrated with the subfloor construction.

Use a plastic foil (aging resistant PE-foil) with a thickness of at least 0.20 mm (8 mil). Apply with a minimum of 20 cm (8 inches) joint overlap, taped and turned up against the walls and clean-cut once the floor is installed.

If you want to add an extra underlay material, please contact your distributor.

3. FLOOR HEATING

Prior to installation of Alloc Commercial a moisture (vapor) barrier with a minimum thickness of 0.20 mm (8 mil) must be installed. All heating elements must be turned off during installation and the temperature of the subfloor must be between 15 and 25°C (59 and 77°F). The maximum allowed surface temperature of Alloc Commercial is 28°C (80°F). The installed flooring area of Alloc Commercial must not contain heated and non-heated areas, unless separated by expansion profiles.

The effect of the heating elements must not exceed:

- Heating element: 60W per m² (PE-foil shall be installed directly under the Alloc Flooring)
- Heating mats: 60W per m² (PE-foil shall be installed directly under the heating mats).
- Heating system with pipes of water: the incoming and outgoing water temperature must be regulated not to exceed 60W per m² (PE-foil shall be installed directly under the Alloc Flooring)

Regulation of the temperature after installation, or if the heating system has been turned off for a period of time:

1. The first week the heating should be left on low temperature, 16-20°C (61-68°F).
2. The second week the heating may be adjusted according to the above.

Keep in mind that loose rugs may accidentally function as heat accumulators and raise the temperature to more than the tolerated maximum surface temperature (see above).

4. CLEANING AND USE

To protect the floor from water penetration all four edges are wax-sealed. (For installation in North-America: In rooms where water overflow and leakage may occur, use a compressible material to seal the perimeter of Alloc Commercial, such as foam weather stripping caulked with silicone. For details contact your distributor or review the “express installation procedures” carefully).

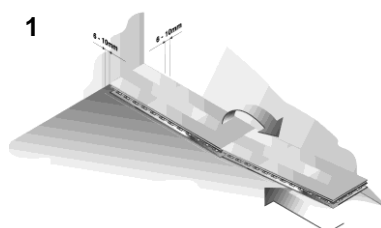
Clean the floor regularly with a vacuum cleaner or a dry mop. If required, the floor may be cleaned with a well wrung cloth and a synthetic detergent. Avoid using too much water. Spillages of water should be wiped off immediately. We recommend that you use felt/furniture pads under heavy furniture and protective mats under castor chairs with hard material wheels.

The ideal humidity in a room is 40-60% at 20°C (68°F).

For further information, see CM instructions.

1. GETTING STARTED

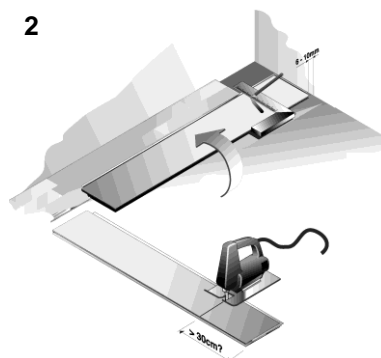
Please read all instructions before you start. Before installation, be certain that the floorboards are undamaged. The locking list of aluminium is of such nature that if it under any circumstances should be deformed/bent down, its horizontal position can easily be corrected by bending it back. Start in one corner, place the Alloc Commercial floorboard with the aluminium joint facing the room and lay it towards right. If the aluminium locking system gets damaged, it can easily be bent back into position.



2. END OF A ROW

Place the final floorboard of the row faced down with the short side of the end piece 6-10 mm (1/4 inch minimum) from the wall. Mark the place where the floorboard is to be cut.

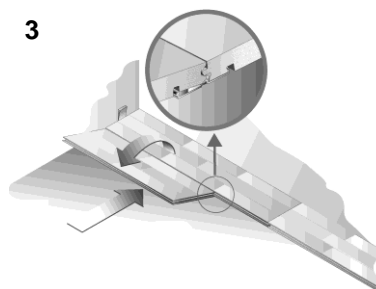
Place the floorboard faced down on the work surface and cut to size, using a jig-saw or circular saw. Start near the aluminium strip. Use a floorboard as a guide, to make a right-angled cut.



Cut faced up using a table saw. Use a fine toothed type, if you are using a hand saw. Cut the floorboards faced up, and start at the aluminium strip. Use a sawing motion that is almost horizontal to the floorboard (see picture).

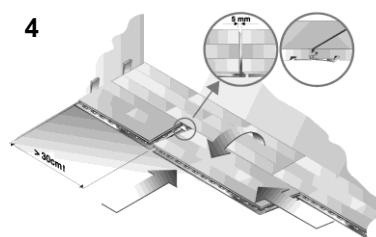
3. STARTING THE SECOND ROW

Use the cut piece of floorboard from the previous row to start the next row. This must be at least 30 cm (12 inches) long. Always ensure that the end joints are staggered at least 30 cm (12 inches). Place the floorboard in an angle to the floorboard in the previous row, press down and forward at the same time.



4. CONTINUE INSTALLING THE FLOOR

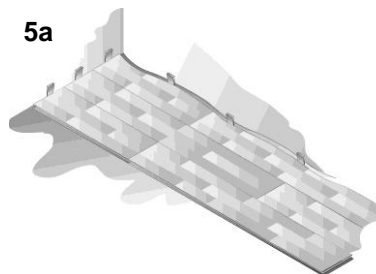
Place the next floorboard in the same manner. When placing the next floorboard, ensure that the end is positioned approximately 5 mm (1/4 inch) from the end of the previous one – i.e. above its interlock strip. Press the floorboard gently down onto the floor. On the short sides, use a tapping block to knock the floorboards into locking position. Use only the force required to lock the floorboards to each other.



5. ALIGNING AGAINST THE WALL

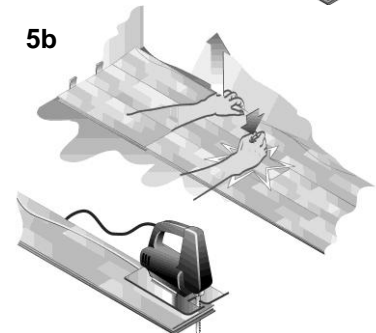
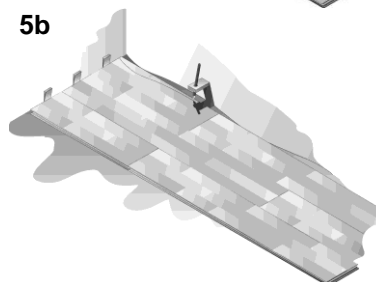
5a.

When you have laid three complete rows of floorboards, slide the flooring in towards the wall, leaving a suitable gap of 6-10 mm (1/4 inch minimum). Use distance pieces (wedges).



5b.

If the wall is uneven, the floorboards must be adapted to its contours (see picture). Remove the first row. Cut the floorboards as required and then re-lay them, by sliding them, in an angle, in under the floorboards that are already in position.

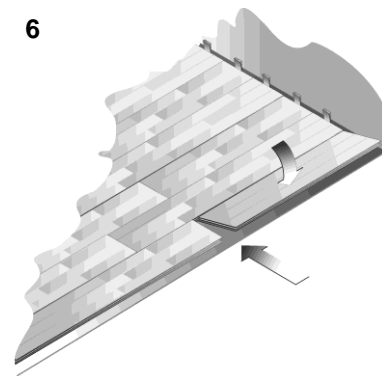


6. FINAL ROW

The last row must be more than 5 cm wide. Measure the width of the missing row. Remember to leave a gap of 6-10 mm to the wall. Then cut off the unneeded part (lengthwise) of the floorboard.

NB! It is the lengthwise part that has aluminium moulding that should be cut off.

6

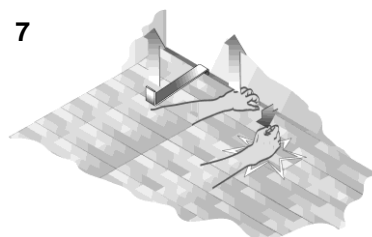


7. DISMANTLING THE FLOOR

If you wish to remove the floor, just lift the floorboards a few centimetres and tap along the joint. This will release the floorboards, which can then be pulled out.

NB! Always bend the floorboards upwards to avoid damages in the locking system.

7



7

