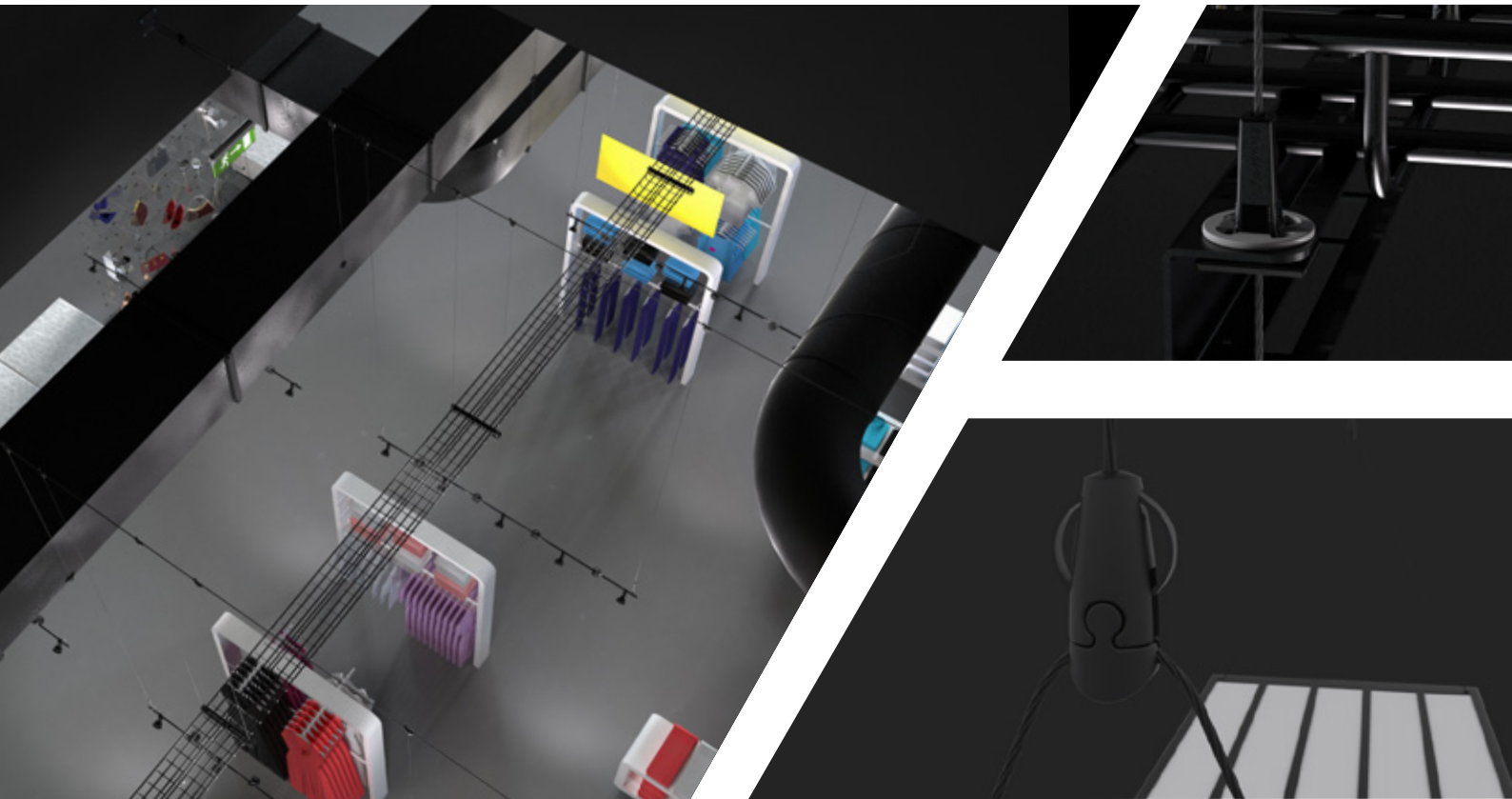




# Black Suspension Solutions

For Pipework, Electrical Containment, Lighting, Signage & Acoustic Panels



- Improved aesthetics
- Quick, simple installation
- Fixtures disappear into the roof space

Catenary Kit  
Page 8



C-Clip  
Page 8



Express  
Page 6



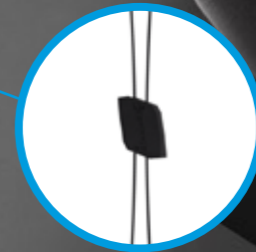
Angel  
Page 4



Trapeze  
Page 7



Standard Hanger  
Page 5



## Black Suspension Solutions

Gripple's ready-to-use suspension kits now come with the option of a black finish to further enhance the aesthetic appeal of the range.

The slim and unobtrusive aesthetics of Gripple's wire suspension systems have always proved perfectly suited to the design of many modern buildings, either where building services in the roof space are left exposed and visible, or for specific applications such as the suspension of lighting.

The new black line of products aims to build on this success and will be ideal for use in a wide variety of environments where aesthetics are paramount including theatres, exhibition, concert halls and retail spaces.

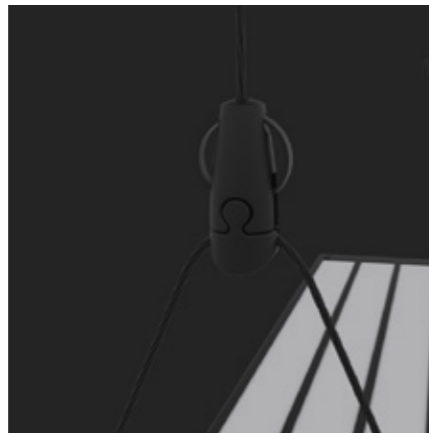
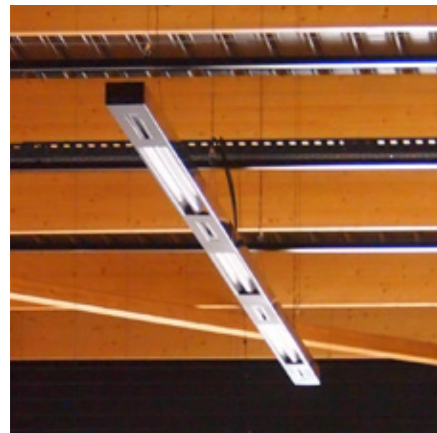
To achieve the desired black wires are chemically blackened during a process of dipping the product through a variety of inert non hazardous chemicals.



# Angel

Designed for architectural lighting suspensions, signage, acoustic baffles and all other installations where aesthetics are important.

- **Aesthetic** - the design complements modern building design
- **Discreet** - supplied with 1.5 mm wire for a unobtrusive suspension
- **Quick** - ergonomic button allows for easy, rapid adjustment
- **Strong** - 15 kg SWL to accommodate a wide range of fittings
- **Versatile** - variety of different foot and End Fixings for attachment to a wide range of products and substrates
- **Safe** - no tools or “Hot Works” permit required for installation, improving health and safety on-site



Angel	Wire Diameter	Safety Factor Load Rating	Maximum Working Load
M6 Male & Female	1 mm	5:1	15 kg
Hook			
Y-Fit			

**End Fixings - Page 10**  
A wide selection of End Fixing options to suit your application requirements

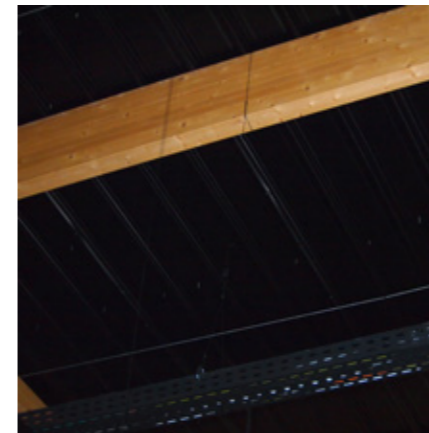
**Product Codes - Page 10**  
Standard product codes for ordering Kits and Wire Rope Hangers

**Sales Enquiries**  
Call our friendly team on 0800 018 4264

# Standard Hanger

A versatile suspension kit for a variety of applications including the suspension of HVAC, pipework and electrical containment from different substrates.

- **Quick** - fewer components compared to traditional methods, up to six times faster to install than traditional suspension systems
- **Safe** - no tools or “Hot Works” permit required for installation, improving health and safety on-site
- **Strong** - industry approved, conforms to DW144.
- **Lightweight** - easy to move and handle on-site, whilst reducing the load on the building structure
- **Aesthetic** - the design complements enclosed and open soffit spaces



Standard Hanger	Wire Diameter	Safety Factor Load Rating	Maximum Working Load
No. 1	1 mm	5:1	10 kg
No. 2	2 mm		45 kg
No. 3	3 mm		90 kg

**Installation System Design Service**  
Submit your drawings and our technical team will provide bespoke product specification based on your project requirements

# Express

Tool free suspension kit designed with a keyless release mechanism for fast suspension of a variety of applications from different substrates including M&E, lighting, signage and acoustics.

- **Versatile** - Express No. 1 is ideal for signage, shop fitting, lighting and other lightweight fixtures. Express No. 2 is ideal for mechanical and electrical applications
- **Quick** - ergonomic buttons allow for rapid adjustment, no Setting Key required
- **Safe** - no tools or "Hot Works" permit required for installation, improving health and safety on-site
- **Aesthetic** - the design complements enclosed and open soffit spaces
- **Lightweight** - easy to move and handle on-site, whilst reducing the load on the building structure



Express	Wire Diameter	Safety Factor Load Rating	Maximum Working Load
No. 1	1 mm	5:1	15 kg
No. 2	2 mm		45 kg

The physical appearance of Express No. 1 differs to No. 2.

**End Fixings - Page 10**  
A wide selection of End Fixing options to suit your application requirements

**Product Codes - Page 10**  
Standard product codes for ordering Kits and Wire Rope Hangers

**Sales Enquiries**  
Call our friendly team on 0800 018 4264

# Trapeze

Designed for quick attachment to channel for the fast suspension of a variety of applications including HVAC, pipework and electrical containment from different substrates.

- **Simple** - tapered design accommodates all slot sizes for fast and easy installation into channel reducing time spent working at height
- **Quick** - adjustment pin allows for rapid adjustment, no Setting Key required
- **Safe** - no tools or "Hot Works" permit required for installation, improving health and safety on-site
- **Strong** - industry approved



Trapeze	Wire Diameter	Safety Factor Load Rating	Maximum Working Load
No. 2	1 mm	5:1	15 kg
No. 3	2 mm		45 kg

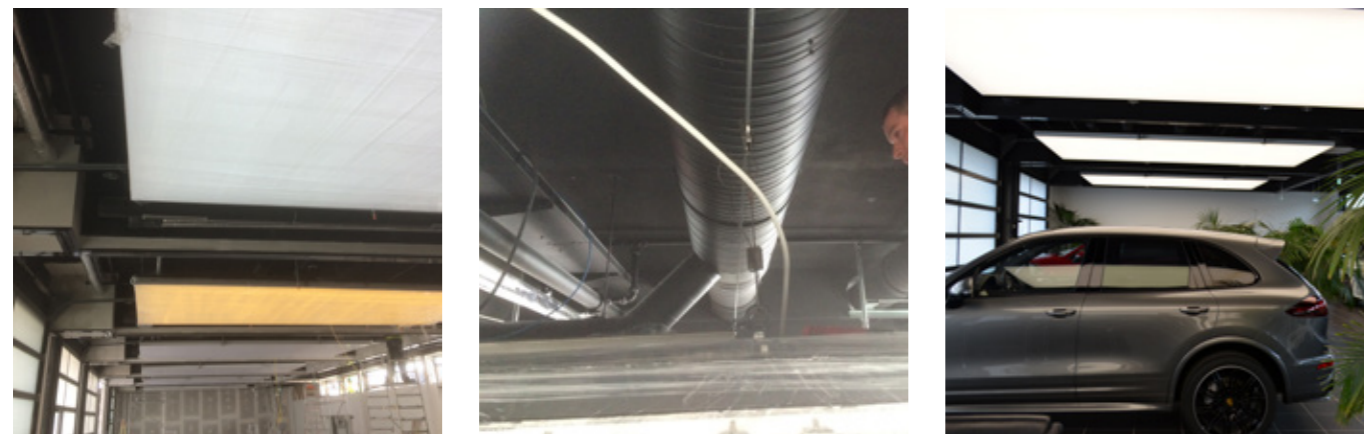
**Installation System Design Service**  
Submit your drawings and our technical team will provide bespoke product specification based on your project requirements



# Catenary Kit & C-Clip

Create secure, overhead spans by running high strength wire rope between two fixing points. Ideal for applications where no direct vertical anchor point is available.

- **Versatile** - can easily be used for a variety of applications including lighting, HVAC, pipework and electrical containment
- **Quick** - fewer components compared to traditional methods, up to six times faster to install than traditional suspension systems
- **Aesthetic** - the design complements enclosed and open soffit spaces providing a discreet finish



Lockable Plus	Wire Diameter	Safety Factor Load Rating	Maximum Working Load Of Span
No. 3	3 mm	5:1	30 kg
No. 6	6 mm		100 kg
C-Clip	Wire Diameter	Safety Factor Load Rating	Maximum Working Load Per Unit
3 mm	3 mm	5:1	15 kg
6 mm	6 mm		45 kg

## End Fixings - Page 10

A wide selection of End Fixing options to suit your application requirements

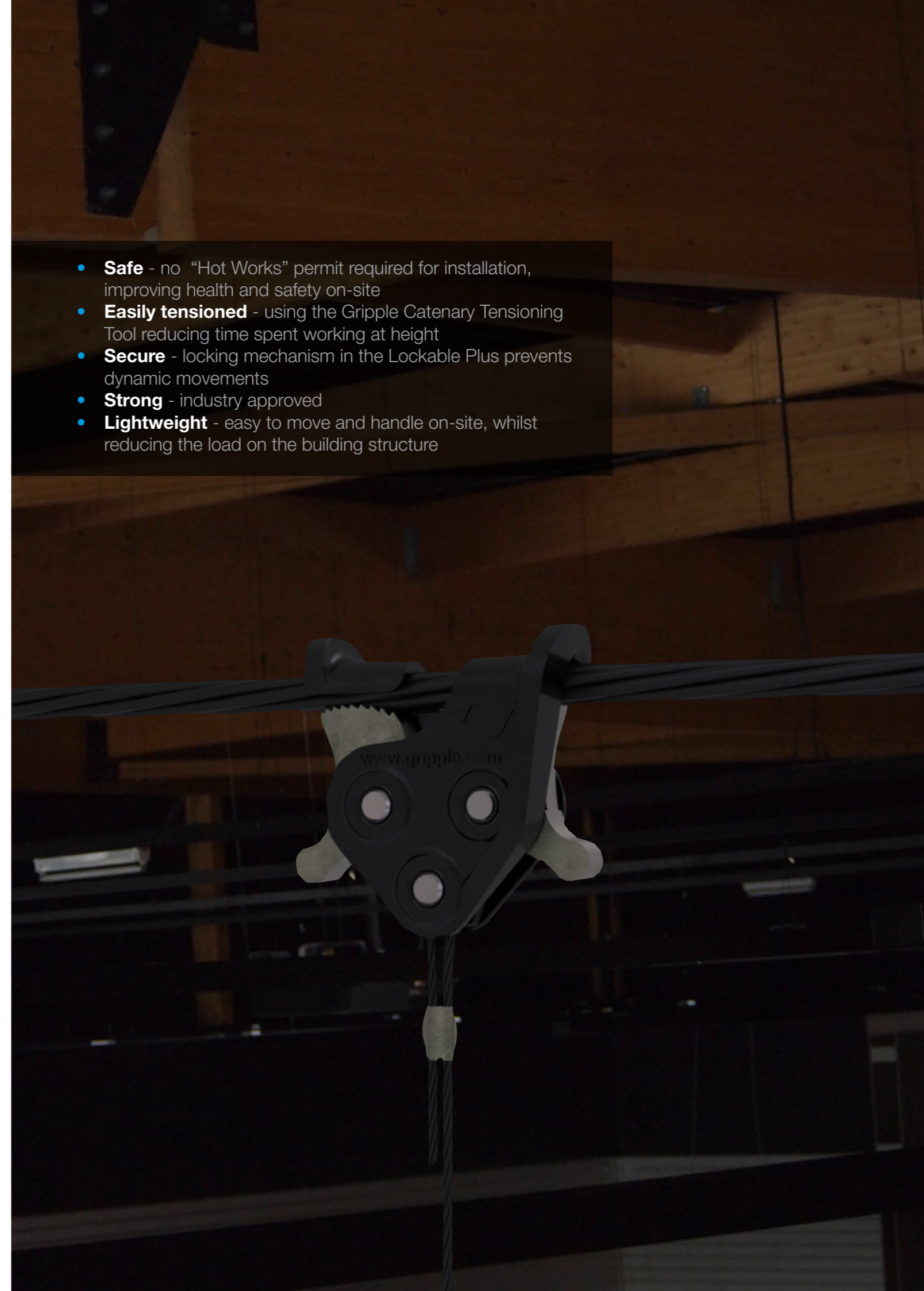
## Product Codes - Page 10

Standard product codes for ordering Kits and Wire Rope Hangers

## Sales Enquiries

Call our friendly team on 0800 018 4264

- **Safe** - no "Hot Works" permit required for installation, improving health and safety on-site
- **Easily tensioned** - using the Gripple Catenary Tensioning Tool reducing time spent working at height
- **Secure** - locking mechanism in the Lockable Plus prevents dynamic movements
- **Strong** - industry approved
- **Lightweight** - easy to move and handle on-site, whilst reducing the load on the building structure







# www.gripple.com

info@gripple.com

## **Gripple Ltd (Headquarters)**

The Old West Gun Works  
Savile Street East  
Sheffield S4 7UQ  
UK

**T** | +44 (0) 800 018 4264

**F** | +44 (0) 114 275 1155

**E** | info@gripple.com

## **Gripple Inc**

1611 Emily Lane  
Aurora  
IL 60502  
USA

**T** | +1 866 474 7753

**F** | +1 800 654 0689

**E** | usinfo@gripple.com

## **Gripple Europe SARL**

1, rue du commerce  
BP 37  
67211 Obernai Cedex  
France

**T** | +33 (0)3 88 95 44 95

**F** | +33 (0)3 88 95 08 78

**E** | frinfo@gripple.com

## **Gripple India**

B 95/2  
Naraina Industrial Area  
Phase I  
New Delhi-110028

**T** | +91 11-45136817

**F** | +91 11-40582703

**E** | ininfo@gripple.com



A GLIDE company

