



CABINS & SHADES FZC

**PO Box: 9188, SAIF ZONE
Sharjah, United Arab Emirates
Tel: +971 6 5573399; 5578275
Fax: +971 6 5573393; 5570234
Email: admin@cabinuae.com
Website: www.cabinuae.com**



COMPANY PROFILE

- **INTRODUCTION**
- **POLICIES & PROCESS**
- **PRODUCTS & SERVICES**
- **MAJOR PROJECTS**
- **PHOTO INDEX**
- **CERTIFICATES & CREDENTIALS**

INTRODUCTION

In 2004, **Cabins & Shades FZC**, operating from SAIF Zone (Sharjah Airport International Free Zone), Sharjah was born to unravel the need of Prefabricated Building to be used in many types of applications for the reason that it saves engineering and construction time, which compliments the traditional concept of value for money and time.

Our factory is highly sophisticated with excellent infrastructure, which is in a position to manufacture Pre Fabricated buildings for labor accommodations, Double Storied offices for construction site, Deluxe villas, Oil field Cabins, Caravans and the like for local requirements as well as export.

Our team has also acquired specialization in building these structures, according to specific requirements and needs of our customers.

We also offer total Turnkey solutions including necessary Civil and MEP works at site. Respected and trusted, our designs are customized for specific sites and needs, and meet all building codes and standards.

Cabins & Shades FZC is a part of **Mister Shade Group**, who had a humble beginning in 2001 has become a force to reckon within the shade industry (www.mistershadeuae.com).

We look for your patronage & support and assure you that your requirements will be taken care of by the young, dynamic, technically qualified and dedicated team at “**CNS**”, who are eagerly looking forward to being of service to you & your organization.

Sincerely,

Sabu Subramoniam

C. E. O.

COMPANY PROFILE

- INTRODUCTION
- **POLICIES & PROCESSES**
- PRODUCTS & SERVICES
- MAJOR PROJECTS
- PHOTO INDEX
- CERTIFICATES & CREDENTIALS

Quality Policy

The primary goal of CNS is to achieve the highest standards of quality in all our operations without compromise. Our objective is to continually improve our company performance, while offering our customers a safe, cost effective and professional service.

Quality performance is one of the cornerstones of our company culture, and is considered a personal responsibility of all employees. To maintain quality performance of all business units at the highest level, the following aims are pursued:

- a.To fulfill or exceed Customer needs and expectations by delivering a quality product in a consistent and timely manner.*
- b.To cultivate and maintain the commitment to continual improvement and communicate our goals and objectives to every employee.*
- c.To promote a working environment where training and tools are provided for all work to proceed in a safe and efficient fashion.*
- d.To furnish a system of policies which are periodically reviewed to ensure the ability of all groups to perform their work effectively.*

COMPANY PROFILE

- INTRODUCTION
- **POLICIES & PROCESSES**
- PRODUCTS & SERVICES
- MAJOR PROJECTS
- PHOTO INDEX
- CERTIFICATES & CREDENTIALS

Manufacturing Process

The methodology of manufacturing and erecting a prefab building can be summarised as follows.

The delivery of the products are carried out in three different modes:

1.As a **modular unit** prefinished with all sanitary, electrical fittings and ready to use with plug-ins.

This is ideal for local deliveries and GCC States



2.As a **customized building** prefabricated in the factory in different modules and assembled at site as a single unit at site and all finishing done at site.

These are suitable for local markets and GCC



COMPANY PROFILE

- INTRODUCTION
- **POLICIES & PROCESSES**
- PRODUCTS & SERVICES
- MAJOR PROJECTS
- PHOTO INDEX
- CERTIFICATES & CREDENTIALS

Manufacturing Process

3. As a totally '**knocked down**' type of construction which allows us to stuff the entire units in to containers or do a flat pack. In this case, the entire unit is built at site with the components supplied and using Erection methodology and shop drawings provided by Cabins & Shades.

These kinds of units are normally produced for export markets. CNS have lot of experience in successful completion of these kind of projects in Africa



COMPANY PROFILE

- INTRODUCTION
- POLICIES & PROCESSES
- **PRODUCTS & SERVICES**
- MAJOR PROJECTS
- PHOTO INDEX
- CERTIFICATES & CREDENTIALS

Cabins & Shades FZC had a humble beginning with wooden prefabricated buildings in 2005. but it has expanded and established their capability on the below mentioned products and services as well.

1.Prefabricated fire rated buildings, meeting Abu Dhabi Civil Defense requirements.

2.Interior decoration works in villas, office spaces and lobby areas etc.

3.Drywall partitions (Various options)

4.Stretched ceilings using Batyline fabric.

5.Flooring & Joinery works.

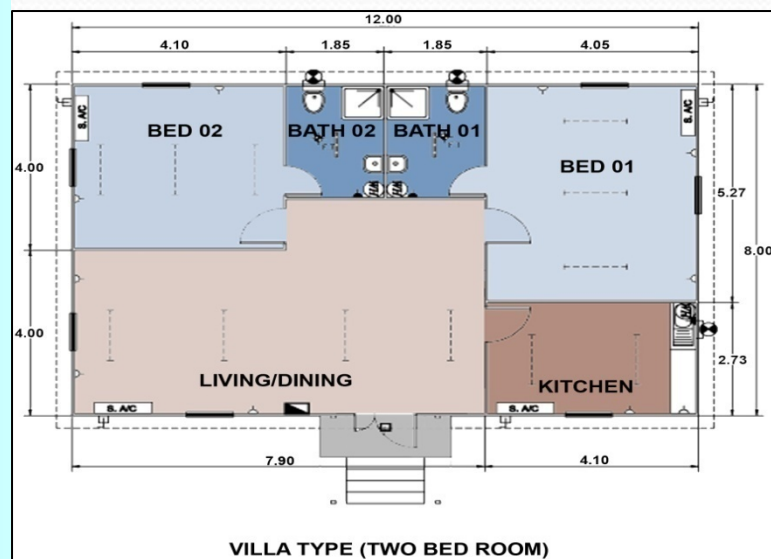
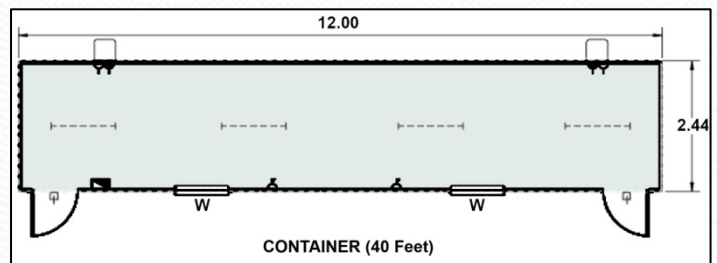
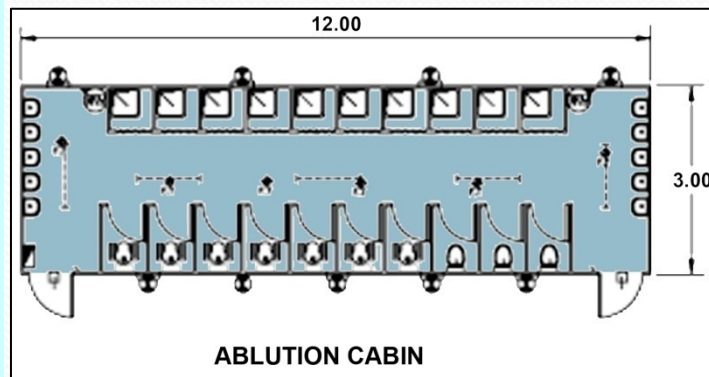
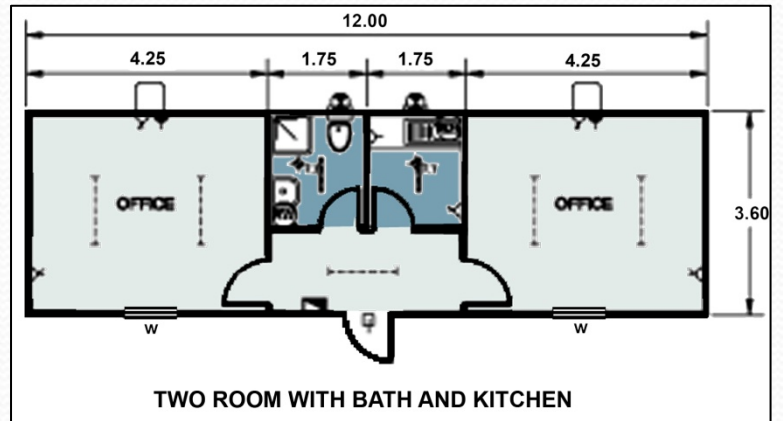
Adequate references can be provided on request.

PRODUCTS & SERVICES

COMPANY PROFILE

- INTRODUCTION
- POLICIES & PROCESSES
- **PRODUCTS & SERVICES**
- MAJOR PROJECTS
- PHOTO INDEX
- CERTIFICATES & CREDENTIALS

Plans & Elevations



COMPANY PROFILE

- INTRODUCTION
- POLICIES & PROCESSES
- **PRODUCTS & SERVICES**
- MAJOR PROJECTS
- PHOTO INDEX
- CERTIFICATES & CREDENTIALS

PRODUCTS & SERVICES

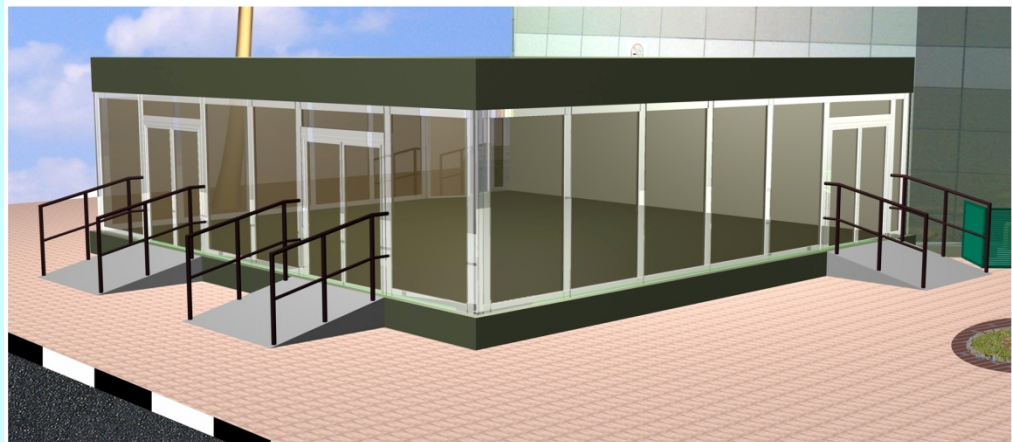
Plans & Elevations



VILLA TYPE CABIN



OFFICE CABIN (G + 1)



HALL (CONFERENCE) TYPE

PRODUCTS & SERVICES

COMPANY PROFILE

Plans & Elevations

- INTRODUCTION
- POLICIES & PROCESSES
- **PRODUCTS & SERVICES**
- MAJOR PROJECTS
- PHOTO INDEX
- CERTIFICATES & CREDENTIALS

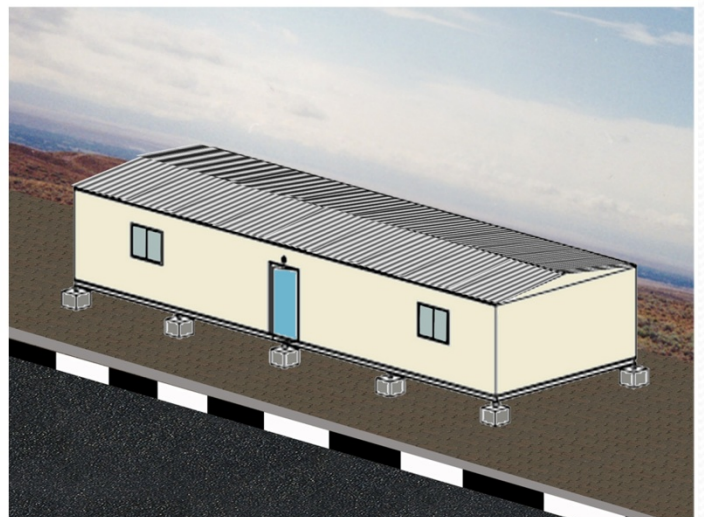
SECURITY CABIN



MOSQUE CABIN



STANDARD CABIN



COMPANY PROFILE

- INTRODUCTION
- POLICIES & PROCESS
- PRODUCTS & SERVICES
- **MAJOR PROJECTS**
- PHOTO INDEX
- CERTIFICATES & CREDENTIALS

MAJOR PROJECTS

Project: **HAMRIYA FREE ZONE LEASE
OFFICE BUILDINGS**

Unit Size: **45.00 X 10.46M
14 UNITS (G.F)+14 UNITS (F.F)**

Total Area: **G.F:6589.80M² + F.F:6589.80M² = 13179.60M²**

Proj. Value: **AED 15,365,000.00**



Project: **AL RAHA DEVELOPMENT – Abu Dhabi**

Unit Size: **33.75 X 10.00M – (G.F)+(F.F)**

Total Area : **G.F:337.50M² + F.F:337.50M² = 675M²**

Proj. Value: **AED 1,152,000.00**



COMPANY PROFILE

- INTRODUCTION
- POLICIES & PROCESS
- PRODUCTS & SERVICES
- **MAJOR PROJECTS**
- PHOTO INDEX
- CERTIFICATES & CREDENTIALS

Project: RTA RAILWAY PROJECT - SITE OFFICE

Unit Size: 24.60 X 12.60M – (G.F)+(F.F)

Total Area : G.F:309.96M² + F.F:309.96M² = 619.92M²

Proj. Value: AED 625,200.00



Project: BELHASA DRIVING SCHOOL

Unit Size: 120.00 X 12.20M

Total Area : 1464M²

Proj. Value: AED 1,650,000.00



COMPANY PROFILE

- INTRODUCTION
- POLICIES & PROCESS
- PRODUCTS & SERVICES
- **MAJOR PROJECTS**
- PHOTO INDEX
- CERTIFICATES & CREDENTIALS

MAJOR PROJECTS

Project: AL NIMR PDO (ACCOMODATION),
SOHAR, SULTANATE OF OMAN

Unit Size: 12.00 X 3.60M – 83 Nos.

Total Area: 3,585.60M²

Proj. Value: AED 2,728,185.00



Project: QARN ALAM (ACCOMODATION),
SOHAR, SULTANATE OF OMAN

Unit Size: 12.00 X 3.60M – 32 Nos.

Total Area: 1382.4.60M²

Proj. Value: AED 1,120,000.00



PHOTO INDEX

COMPANY PROFILE

- INTRODUCTION
- POLICIES, PROCEDURES
& PROCESS
- PRODUCTS & SERVICES
- LIST OF PROJECTS
- **PHOTO INDEX**
- CERTIFICATES &
CREDENTIALS

WOODEN PREFAB BUILDINGS

1. Accommodation



PHOTO INDEX

COMPANY PROFILE

- INTRODUCTION
- POLICIES, PROCEDURES & PROCESS
- PRODUCTS & SERVICES
- LIST OF PROJECTS
- **PHOTO INDEX**
- CERTIFICATES & CREDENTIALS

2. Double Storey Buildings



COMPANY PROFILE

- INTRODUCTION
- POLICIES, PROCEDURES & PROCESS
- PRODUCTS & SERVICES
- LIST OF PROJECTS
- **PHOTO INDEX**
- CERTIFICATES & CREDENTIALS

3. Mosques



COMPANY PROFILE

- INTRODUCTION
- POLICIES, PROCEDURES & PROCESS
- PRODUCTS & SERVICES
- LIST OF PROJECTS
- **PHOTO INDEX**
- CERTIFICATES & CREDENTIALS

4. Shops & Security Cabins



PHOTO INDEX

COMPANY PROFILE

- INTRODUCTION
- POLICIES, PROCEDURES & PROCESS
- PRODUCTS & SERVICES
- LIST OF PROJECTS
- **PHOTO INDEX**
- CERTIFICATES & CREDENTIALS

5. Site Offices & LOB



COMPANY PROFILE

- INTRODUCTION
- POLICIES, PROCEDURES
& PROCESS
- PRODUCTS & SERVICES
- LIST OF PROJECTS
- **PHOTO INDEX**
- CERTIFICATES &
CREDENTIALS

PHOTO INDEX

SPECIALISED CABINS

1. Kitchen & Toilets



2. Semi Fire rated



3. Luxury Villas



PHOTO INDEX

COMPANY PROFILE

- INTRODUCTION
- POLICIES, PROCEDURES & PROCESS
- PRODUCTS & SERVICES
- LIST OF PROJECTS
- **PHOTO INDEX**
- CERTIFICATES & CREDENTIALS

INTERIORS & RECREATION

1. Exhibition Stand



2. Pergolas



3. Dry Wall Partition & False Ceiling



COMPANY PROFILE

- **INTRODUCTION**
- **POLICIES, PROCEDURES & PROCESS**
- **PRODUCTS & SERVICES**
- **LIST OF PROJECTS**
- **PHOTO INDEX**
- **CERTIFICATES & CREDENTIALS**

3. Dry Wall Partition & False Ceiling



تتهادة تسجيل عضوية لعام
Membership Registration Certificate For Year
(2012)

إن غرفة تجارة وصناعة الشارقة بناءً على قانونها رقم (1) لعام 2003م
Sharjah Chamber of Commerce and Industry according to the law no. (1) 2003

700618
2422

رقم العضوية
رقم الترخيص

قد سجلت
كبنزاند شيدز ش م ح
CABINS & SHADES FZC **Company Name**

منطقه حره - م.ا
SAIF ZONE EX.

في الفئة
Category

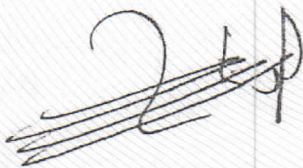
الإمارات
EMIRATES U.A.E. **Nationality**

صناعي
INDUSTRIAL **Licence Type**

العنوان
المنطقه الحره لمطار الشارقه الدولي
SHARJAH AIRPORT INT. FREE ZONE **Address**

لممارسة النشاط
تصنيع المساكن الجاهزه والمستودعات
Activity

MANUFACTURING OF PORTA CABINS & SHADES





2013/01/03

تاريخ الانتهاء

2004/07/04

تاريخ الإصدار

328674



شهادة ترخيص

License Certificate

LICENSE NO. : 03-04-02422 رقم الرخصة : ٠٣ - ٠٤ - ٠٢٤٢٢

NAME : CABINS & SHADES (FZC) الاسم : كبنزاند شيدز (ش.م.ح)

LEGAL STATUS : Free Zone Co. with Limited Liability الشكل القانوني : شركة منطقة حرة ذات مسؤولية محدودة

TYPE OF LICENSE : Industrial نوع الرخصة : صناعية

ACTIVITY(S) : Manufacturing of Porta Cabins & Shades النشاط : تصنيع المساكن الجاهزة والمستودعات

OWNER(S) : Valliamme Sabu Subramaniam مالِك : فالياما سابو سوبرامانيم
Moh'd Khalid A.M.Al Daour محمد خالد احمد محمد الداور

MANAGER : Valliamme Sabu Subramaniam المدير المسئول : فالياما سابو سوبرامانيم

SAIF-ZONE ADDRESS : Plot of Land P3- 7 & 8 العنوان في المنطقة الحرة : قطعه ارض بي ٣-٧ و ٨
P.O.Box 9188 ص.ب. ٩١٨٨
Sharjah - U.A.E. الشارقة - أ.ع.م

ORIGINAL ISSUE DATE : 04 July 2004 الاصدار الأصلي : ٤ يوليو ٢٠٠٤

EXPIRY DATE : 03 January 2013 تاريخ الانتهاء : ٣ يناير ٢٠١٣

REMARKS : THIS LICENSE IS ISSUED AND BASED UPON EMIRI DECREE NO. 2 OF 1995 ISSUED IN SHARJAH ON MAY 8, 1995 ملاحظات : هذه الرخصة صادرة استنادا الى المرسوم الأميري رقم ٢ لسنة ١٩٩٥ الصادر في الشارقة بتاريخ ٨ مايو ١٩٩٥

THIS LICENSE IS GRANTED TO THE LICENSEE ONLY AND SHALL NOT BE LEASED OR TRANSFERRED WITHOUT PRIOR APPROVAL OF THE SAIF-ZONE هذه الرخصة ممنوحة للمرخص له فقط ولا يجوز تاجيرها أو تحويلها إلا بموافقة هيئة المنطقة الحرة لمطار الشارقة الدولي

SALES IN U.A.E SHALL BE CARRIED OUT IN ACCORDANCE WITH THE VALID LAWS AND REGULATIONS THEREOF تتم أعمال البيع داخل الدولة وفقا للنظم والقوانين السارية فيها

Authorized Signatory التوقيع

Date : 17/01/2012

Note :

Any correction or erosion will in-validate this certificate.

JQ



Authorized Signatory التوقيع

التاريخ : ٢٠١٢/٠١/١٧

ملاحظة :

أي تغيير أو شطب يلغي صلاحية هذه الشهادة.

COMPANY PROFILE

- INTRODUCTION
- POLICIES, PROCEDURES & PROCESS
- PRODUCTS & SERVICES
- LIST OF PROJECTS
- PHOTO INDEX
- CERTIFICATES & CREDENTIALS

CERTIFICATES & CREDENTIALS

3. Abu Dhabi Civil Defense Approval,

United Arab Emirates
Ministry of Interior



دولة الإمارات العربية المتحدة
وزارة الداخلية
إدارة الدفاع المدني أبوظبي
قسم الوقاية والسلامة

الرقم: 942 / 17 / 5
التاريخ: 1430 / / هـ
الموافق: 2009 / 13 / 24 م

السادة / كابينز اند شينز ش م ح المحترمين

الموضوع / موافقة على مواصفات فنية

إشارة لكتابكم رقم سي ان اس - جي اني ان 09/0326 بتاريخ 2009/3/19

• لا مانع من الموافقة على (المواصفات الفنية) لنظام البناء الجاهز المقدم من قبلكم المكون من الحديد للهيكل العام للجدران والأسقف والأرضيات والمبطنه بمواد عازلة للحرارة من الصوف الصخري والمغطاة بالواح من الاسمنت او الجبس او الواح معدنية مجلفنة للجدران والأسقف والواح إسمنتية للأرضيات ملبسة بمادة الفينيل لاستخدامها في تشييد المباني المؤقتة.

• تعتبر هذه الموافقة على المواصفات الموضحة أعلاه شريطة الالتزام بالاشتراطات الواردة في ال (NFPA - 5000) وفي حال قيامكم بإجراء أي تعديل على المواصفات المقدمة عليكم مراجعة الدفاع المدني للاعتماد



وتفضلوا بقبول فائق الاحترام

المقدم /

طارق علي سمحان

عن / مدير إدارة الدفاع المدني أبوظبي

نسخة الى :-
الملف العام

COMPANY PROFILE

4. Organisational Chart

- INTRODUCTION
- POLICIES, PROCEDURES & PROCESS
- PRODUCTS & SERVICES
- LIST OF PROJECTS
- PHOTO INDEX
- CERTIFICATES & CREDENTIALS

ORGANIZATION CHART

