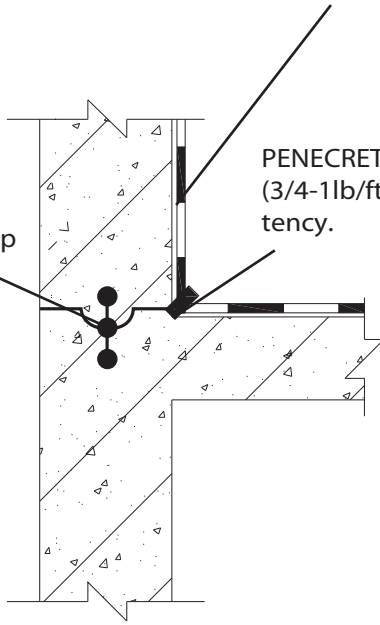


PENETRON® 1.4kg-1.6kg/m<sup>2</sup> (2.5-3.0lbs/y<sup>2</sup>)  
applied in 2 coats or sprayed.

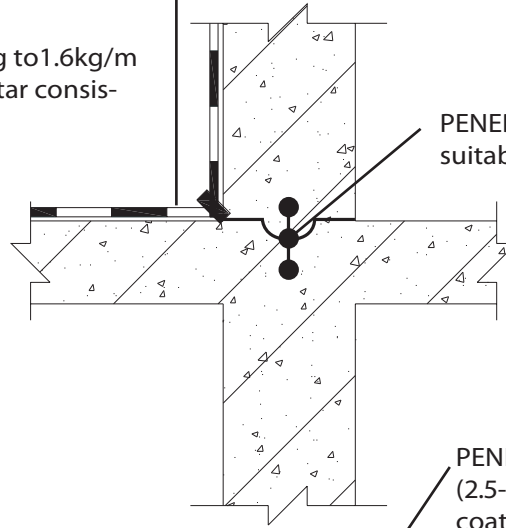
PENEBAR SW45 rapid™  
or other suitable waterstop

PENECRETE™ 1.1kg to 1.6kg/m  
(3/4-1lb/ft) in mortar consistency.

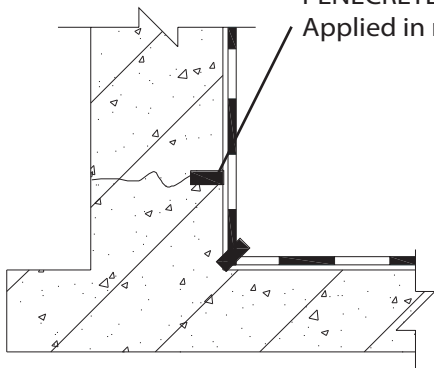


PENETRON PLUS™  
0.5kg-0.7kg/m<sup>2</sup> (1.1lb to 1.5lb)  
dry shaken applied and trowled in.

PENEBAR SW45™ or other  
suitable waterstop



PENECRETE™  
Applied in mortar consistency.



PENETRON® 1.4kg-1.6kg/m<sup>2</sup>  
(2.5-3.0lbs/y<sup>2</sup>) applied in 2  
coats or sprayed.

PENEBAR SW45 rapid™  
or other suitable waterstop

PENECRETE™ 1.1kg to 1.6kg/m  
(3/4-1lb/ft) in mortar consistency.

PENETRON PLUS™  
0.5kg-0.7kg/m<sup>2</sup> (1.1lb to 1.5lb)  
meter dry shaken and trowled in.

