

Consultants Guide

Specifying hanger systems for MEP and HVAC services



- Globally approved system
- Proven benefits to projects
- Complete engineered solutions

Join the revolution

In the late 1990s Gripple introduced emphatic change to the building services market with a fresh and alternative means of suspension in the construction and industrial sectors. When the original Gripple device was conceived no-one could have predicted that this would lead to the radical approach of using wire rope hangers, which have fast become the benchmark, for quick and easy methods of hanging mechanical, electrical, HVAC and plumbing services. As a result of this revolution, Gripple introduced an entirely new way of working to the industrial sector; load-rated hanger kits quickly proved perfect for ducting, cable containment, lighting, piping, false ceilings, signage and much, much more.

Gripple has since been specified and installed on numerous high profile and prestigious projects across the world including Wembley Stadium (UK), Centre Pompidou (France), Melbourne Convention Centre (Australia), Trump Tower (USA) and Mumbai Airport (India). Not only have Gripple's versatile products brought speed, improved site safety and best practice efficiency savings to the installation process, by striving to continually provide the best resolutions for specific needs, the company's capabilities are now recognised, admired and trusted worldwide.

Versatile, approved, quality

Specify Gripple on your next project and realise numerous benefits over traditional threaded rod and channel installations:

An approved system

Approved by consultants and engineers around the world, the Gripple hanger system is also a third party approved system, with certification worldwide including SMACNA, UL, DW414, TUV, Lloyds Register, and ISO9001, offering safety, quality and durability assurances.

Technical and design support

We support projects from design to installation, with our technical advisers offering calculations, CAD designs and take-offs, CPD seminars, product and installation training, and technical information for submissions.

High quality products

All kits are manufactured at our headquarters in Sheffield, UK. Our products undergo rigorous quality checks at every stage of the manufacturing process to ensure what we deliver to the customer is consistently of the highest quality.

Ease of install

Using Gripple will bring time, cost and labour savings to your project with our easy to install, ready-to-use kits.

Improved aesthetics

Discreet and lightweight, the Gripple hanger systems deliver a solution which is aesthetically pleasing, especially important in open spaces.

Versatility

Gripple hanger systems are engineered to meet your project's specific requirements. Each kit is designed to carry a specific weight range and has a designated safe working load (SWL) with a 5:1 safety factor.

Quicker, cheaper, safer

Gripple is a system you, your client and project contractors can be happy with.

Reduced installation time

Six times faster to install than traditional threaded rod, meaning projects can be completed in less time.

Less components

Systems are supplied in lightweight ready-to-use kits eliminating the need for multiple components associated with the traditional installation method, meaning less weight on building structures.

Lower costs

Quicker time to install and fewer components means the Gripple hanger system is more cost-effective than traditional threaded rod.

Improved site safety

The huge reduction in materials required minimises materials handling and potential for trips and falls, reduced time working at height, and hot works are eliminated improving site safety.

Save with Gripple

Up to 97% reduction in embodied CO₂

Save up to 84% on installation times

Materials weight reduced by up to 95%

Labour and materials costs reduced by up to 70%



Specify with confidence...

Don't just take our word for it; Gripple has been specified by a number of the Middle East's leading consultants, and our products have been used on projects across the region including Atlantis the Palm Hotel and Resort, Qatar National Library and Dubai Mall.



Dubai Metro - UAE



Dubai Mall - UAE

Dubai Airport (Terminals 1&3) - UAE

Consultant: Dar Al-Handasah

Opus Tower - UAE

Consultant: Clarke Samadhin Associates

Etihad First Class Premium Lounge, Abu Dhabi Airport - UAE

Consultant: GHD

Kempinski Hotel, The Wave - Oman

Consultant: WSP

Oman Convention & Exhibition Centre - Oman

Consultant: SSH

Jotun Paint Factory - Oman

Consultant: Semac + Partners LLC

Doha Airport - Qatar

Consultant: Parsons

Dubai Sports City Mall - UAE

Consultant: Arif & Bintook Consulting Architects and Engineers

Doha Convention Centre and Tower - Qatar

Consultant: Hyder Consulting



Dubai Airport - UAE



Doha Airport-Qatar

Working together from design to installation

We can offer a range of technical and engineering services to help you specify the correct Gripple system for your project. Based on the site drawings and site visits if required, we are able to review project plans and specifications to advise the type and quantity of Gripple products required to meet your exact requirements.

Technical support

- Take-off/drawing mark-up service
- CAD drawings
- Environmental impact studies
- On-site training for contractors
- Completion and installation sign-off reports
- Catenary tension calculators
- Testing and approvals
- Product training and CPD sessions

Resources

- Product information (PI) sheets
- Submittal data sheets
- Product brochures
- Product and installation videos
- Product selectors



Environmentally friendly



Gripple takes an exemplar approach to long term sustainability. The company philosophy is to seek to find sustainable solutions to customer problems, meaning once converted the customer is unlikely to go back to using traditional hanging methods.

The Gripple system is more environmentally friendly and up to six times faster to install than threaded rod, helping save money, and the environment. For each tonne of rod you replace with Gripple you can achieve the same results, but with as little as 50 kg of material. This also means fewer journeys, which lowers transportation costs and emissions. What's more, as our products are lighter and easier to carry, on-site safety is also improved.

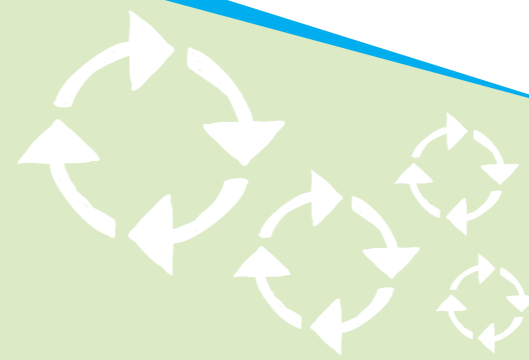
LEED

Using Gripple can help your project meet LEED (Leadership in Energy and Environmental Design) requirements.

As a favourable alternative to traditional threaded rod and channel installations, the reduction in CO₂ emissions by using fewer components with Gripple systems can contribute to achieving LEED points.

Our technical team can work with you to estimate the amount of CO₂ emissions that can be reduced by using Gripple on your project as per the project scale, and provide information and certification for your submittal to USGBC.

- Consumes only 5% of steel used in threaded rod
- Average saving of 1.2 kg of CO₂ per metre
- Just 150 m of Gripple suspensions saves enough CO₂ to fuel a 100 W light bulb, 24 hours a day for a whole year!
- Made-to-measure
- Less wastage, optimises raw materials
- Manufacturing certified to ISO 14001
- Fully-integrated Environmental Management System
- Committed to sustainability
- Built-in from design to delivery



www.gripple.com

info@gripple.com

Please contact your local representative for product or technical information, or to discuss your next project.

Wasif Ikram

Regional Technical Manager – Middle East

Mobile: +971 (0) 52 761 8215

Email: w.ikram@gripple.com

Gripple Ltd (Headquarters)

The Old West Gun Works
Savile Street East
Sheffield S4 7UQ
UK

TEL: +44 (0)114 275 2255

Fax: +44 (0)114 275 1155

Email: info@gripple.com

Place an order

Please contact our distributor Sentor Electrical for commercial enquiries or to place an order.

ABU DHABI OFFICE

Level 1, Office 112, Masdar City, Abu Dhabi

T | + 971 2 554 7101 **F** | + 971 2 554 7109

E | abudhabi@sentorelectrical.com

DOHA OFFICE

Barwa Village, Building 3, Shop 3, Doha, Qatar

T | + 974 4415 4502 **F** | + 974 5589 0289

E | qatar@sentorelectrical.com

OMAN OFFICE

Office 202 Floor 2, Tamimah Building, Wattayah,
PO BOX 395, Muscat, Sultanate of Oman

T | + 968 2466 7657 **F** | + 968 2466 7657

E | oman@sentorsupplies.com

DUBAI OFFICE

Sentor Electrical Trading Unit 1506-1509,
International Business Tower, Dubai

T | + 971 4 421 0335 **F** | + 971 4 421 0337

E | dubai@sentorelectrical.com

DUBAI BULK WAREHOUSE

BLDG, C Unit 10 FNC Building DIP 2

T | + 971 4 885 1099

E | imran@sentorelectrical.com



WE ARE SOCIAL
FOLLOW OUR UPDATES

