



GIULIANI è una importante realtà industriale italiana specializzata nella realizzazione di facciate continue in alluminio e serramenti metallici per grandi forniture.

GIULIANI opera nelle fasi di progettazione, produzione e posa attraverso due divisioni Involucri Edilizi e Serramenti Metallici. Fondata nel 1971 a Forlì, si è costantemente sviluppata ed oggi è dotata di una struttura industriale che insiste su un'area di oltre 32.000 mq, di cui 15.000 coperti, impegnando circa 150 addetti che costituiscono il cuore del "know how" aziendale. Un'officina all'avanguardia affiancata da un'engineering competente composta da tecnici specializzati nell'utilizzo di software CAD, FEM e programmi di progettazione tridimensionale come Inventor, design manager, project manager e responsabili di posa.

Tutto questo permette una capacità produttiva mensile di oltre 15.000 mq.

Giuliani è in possesso di:

- certificato di controllo Qualità ottenuto nel 1997;
- certificato SOA con categorie OS6 (fornitura e posa di infissi metallici) classe VI (fino a € 10.329.000) e OS18-B (componenti in acciaio o metallici) classe VIII (ilimitata).
- Certificato PASS VEC per la qualità e conformità del sistema di controllo e produzione di vetri strutturali;
- software "frame simulator" per simulazioni termiche dei vari profili a differenti temperature e umidità interne ed esterne;
- laboratorio interno certificato da ente notificato e riconosciuto internazionalmente per la tenuta all'aria, all'acqua ed al vento;
- laboratorio acustico di prova costituita da due camere riverberanti (emittente/ricevente) per la determinazione del potere fono isolante di serramenti e facciate.

Dopo questa breve presentazione, riportiamo in allegato alcune opere recenti a dimostrazione, non solo delle ns. doti tecniche, ma anche della continua voglia di creare nuovi standard qualitativi attraverso opere uniche nel loro genere.



GIULIANI est l'un des principaux acteurs de la scène industrielle italienne spécialisés dans la réalisation de façades, de murs-rideaux en aluminium et de menuiseries métalliques pour des projets de grande envergure.

GIULIANI intervient dans les différentes phases du projet, de la fabrication à la mise en œuvre, avec ses deux divisions : Enveloppes et Menuiseries Métalliques.

Fondée en 1971 à Forlì, dans le centre-Nord de l'Italie, la Société GIULIANI a connu un fort développement et, à ce jour, son unité de production s'étend sur une surface de plus de 32.000 m², dont 15.000 m² couverts.

Avec environ 150 salariés, véritables porteurs du savoir-faire de l'entreprise, GIULIANI a une capacité de fabrication mensuelle de plus de 15.000 m² de menuiseries vitrées.

GIULIANI est en outre en possession de:

- Certification de Contrôle Qualité depuis 1997;
- Certifications SOA, catégories OS6 (Menuiseries métalliques et charpentes) classe VI (réalisation d'œuvres jusqu'à une valeur de € 10.329.000) et OS18-B (composants en acier ou métalliques), classe VIII (sans limite de valeur) qui sont équivalents au certificat QUALIBAT Français.
- Certification PASS VEC livré par le C.S.T.B. (qualité et conformité du système de contrôle et production de vitrages extérieurs collés).
- Expertise dans l'usage de logiciels comme « Frame simulator » pour les calculs de transfert de chaleur, du coefficient U, des températures de surfaces et de l'humidité intérieure et extérieure.
- Laboratoire interne, certifié par organisme notifié et reconnu à niveau international, où sont testés les nouveaux produits et les systèmes d'étanchéité AEV.
- Laboratoire pour le mesurage de l'isolation acoustique des fenêtres et des façades, qui se compose d'une salle d'émission et d'une salle de réception adjacentes mais structurellement indépendantes.

Après cette brève présentation, nous vous montrons ci-joint quelqu'un de nos travaux les plus récents, preuve non seulement de nos capacités techniques, mais aussi de l'envie constante de créer nouveaux standards qualitatifs des plus en plus élevés avec des ouvrages uniques dans leur genre.



GIULIANI is a leading Italian company specialized in aluminum curtain walls and metal frames manufacturing for large projects.

GIULIANI carries out the design, production and installation phases through its two main departments: Building Envelopes and Metal Frames. The company has constantly been developing since its foundation in 1971 in Forlì, in the central-northern part of Italy, and nowadays covers a total area of over 22.000sqm, 13.000 of which indoor, relying on the skills of around 150 employees, who constitute the main core of the enterprise's know-how.

Its own up-to-date workshop is led by a highly qualified team of technicians, specialized in the use of CAD and FEM software, always working in cooperation with our design managers, project managers and installation supervisors to cater to every specific project's needs.

All this leads to an average monthly production of over 13.000 sqm of glass frames.

Mastering both the production process and the technical knowledge that underpins it are important features that have allowed us to obtain the Quality Control Certificate since 1997 and afterwards the SAO certificate with OS6 (supply and installation of metal frames) class VI and OS18 category (metal or aluminium parts), class VIII.

The special projects and new systems development department is equipped with specialized computer software, like the "frame simulator" software, for example, which allows for thermal simulations of several profiles at different internal and external temperature and humidity levels in order to develop the best solutions, abiding by all the restrictions of current laws and fulfilling the specific environmental specifications of the project.

We have our own internal laboratory, certified by an internationally recognised organisation, where new systems and production lots are tested in respect to their water-proofing, wind resistance, as well as mechanical and breaking resistances, according to EU laws.

Moreover, we own an internal acoustic laboratory, consisting of two separate rooms, adjacent to each other but structurally independent, one for acoustic emissions and one for receiving, where the finished elements' sound reduction index is tested.

The best proof backing this short presentation are the facts, or rather the works, of which we list some hereafter, that in these 40 years of business have enriched the GIULIANI catalogue, showcasing not only our technical knowledge, but the lasting will to overcome the established limits and to create new quality standards through unique works.

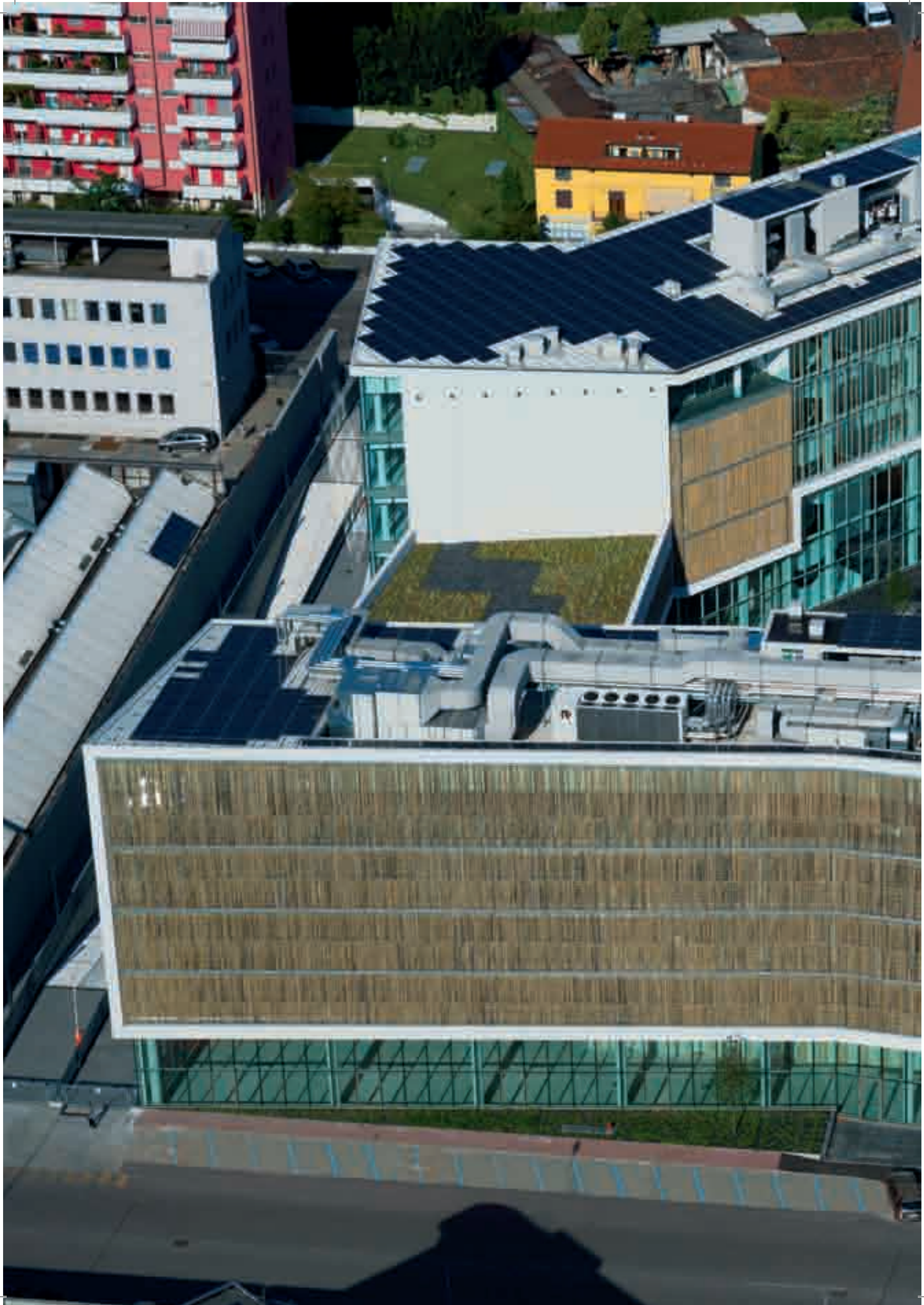


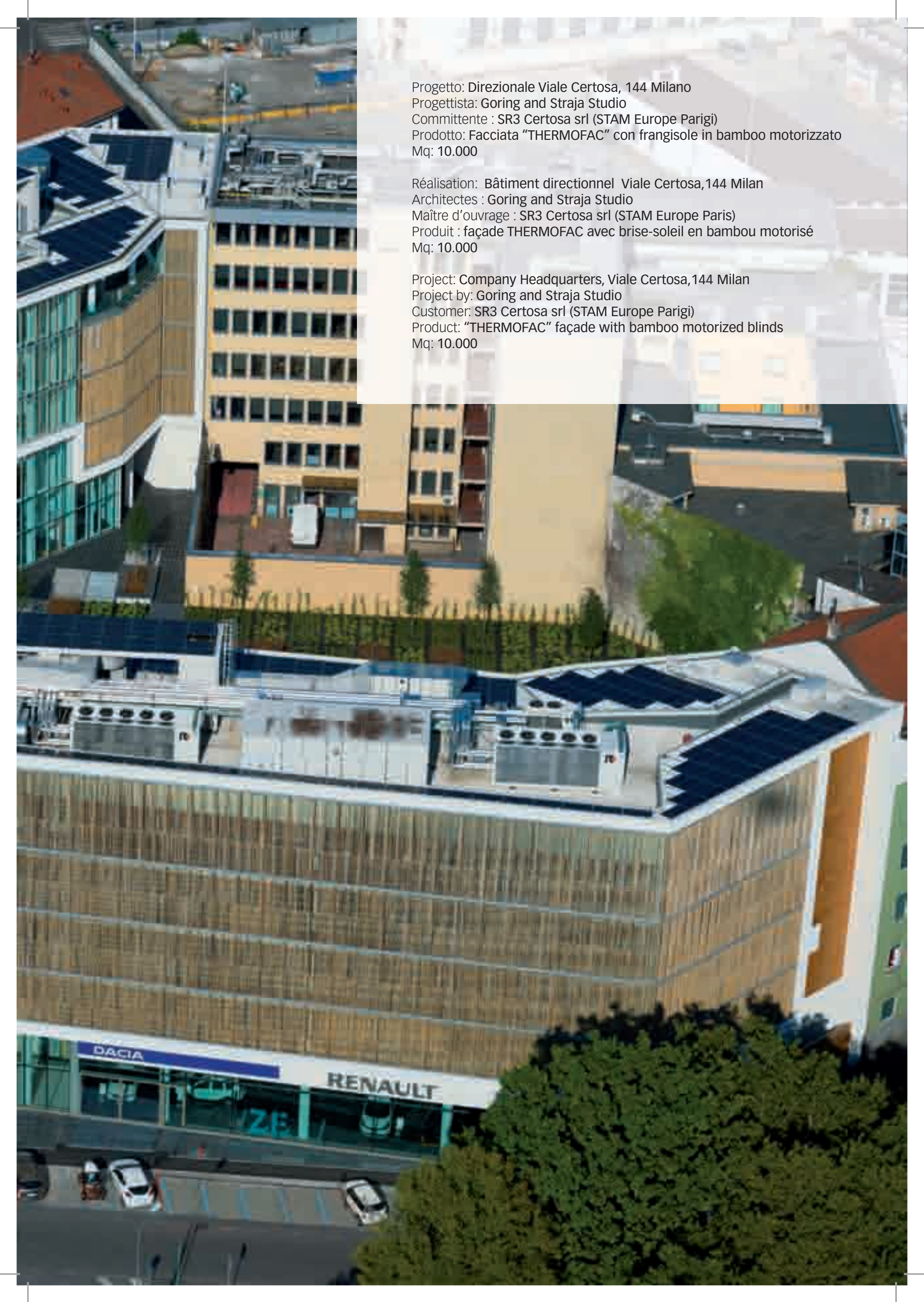


GIULIANI SOCIETÀ COOPERATIVA
Via dei Senoni n. 8
Z.I. La Selva
47122 Forlì - Italia
tel. + 39 0543 721027
fax + 39 0543 725020
www.giulianisc.it
info@giulianisc.it

GIULIANI SOCIÉTÉ COOPÉRATIVE
65, Avenue de Colmar Tour-Albert 1er
92507 Rueil-Malmaison
France
www.giulianisc.fr
info@giulianisc.fr







Progetto: Direzionale Viale Certosa, 144 Milano
Progettista: Goring and Straja Studio
Committente : SR3 Certosa srl (STAM Europe Parigi)
Prodotto: Facciata "THERMOFAC" con frangisole in bamboo motorizzato
Mq: 10.000

Réalisation: Bâtiment directionnel Viale Certosa,144 Milan
Architectes : Goring and Straja Studio
Maître d'ouvrage : SR3 Certosa srl (STAM Europe Paris)
Produit : façade THERMOFAC avec brise-soleil en bambou motorisé
Mq: 10.000

Project: Company Headquarters, Viale Certosa,144 Milan
Project by: Goring and Straja Studio
Customer: SR3 Certosa srl (STAM Europe Parigi)
Product: "THERMOFAC" façade with bamboo motorized blinds
Mq: 10.000



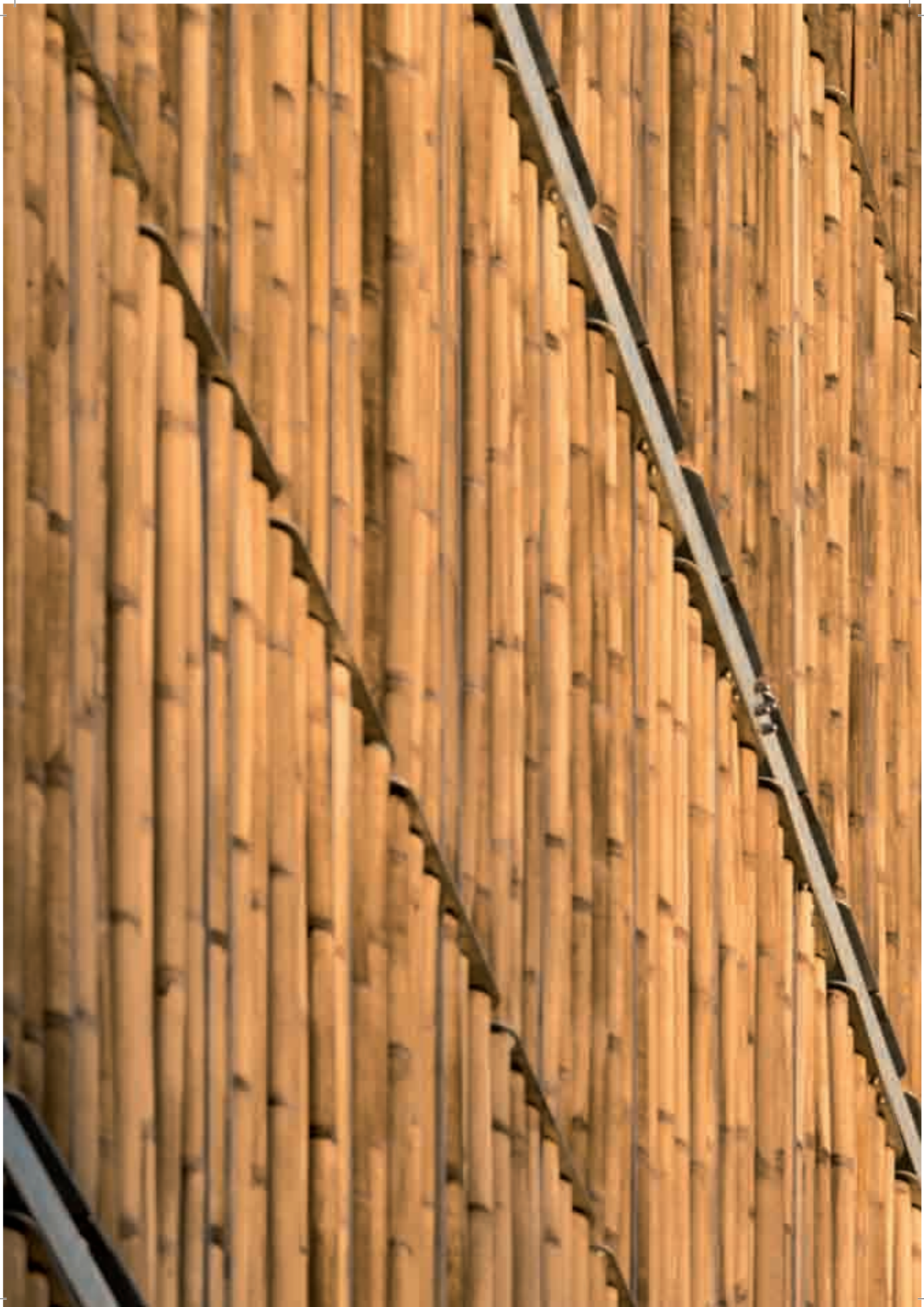


















Progetto: Sede Alcatel, Vimercate (MI)
Progettista: Garretti Associati srl
Committente : ALCATEL
Prodotto: Facciata "THERMOFAC", serramenti in alluminio a taglio termico
"COMFORT F75", rivestimenti metallici e rivestimenti vetriati
Mq: 13.000

Réalisation: Siège Alcatel, Vimercate (MI)
Architectes : Garretti Associées srl
Maître d'ouvrage : ALCATEL
Produit : façade THERMOFAC, menuiserie aluminium à rupture de pont thermique
COMFORT F75, revêtements métalliques et vitrés
Mq: 13.000

Project: Alcatel Headquarters, Vimercate (MI)
Project by: Garretti Associati srl
Customer: ALCATEL
Product : "THERMOFAC" curtain walls, thermal-insulated aluminum metal frames
"COMFORT F75", metal casings and glass cladding.
Mq: 13.000

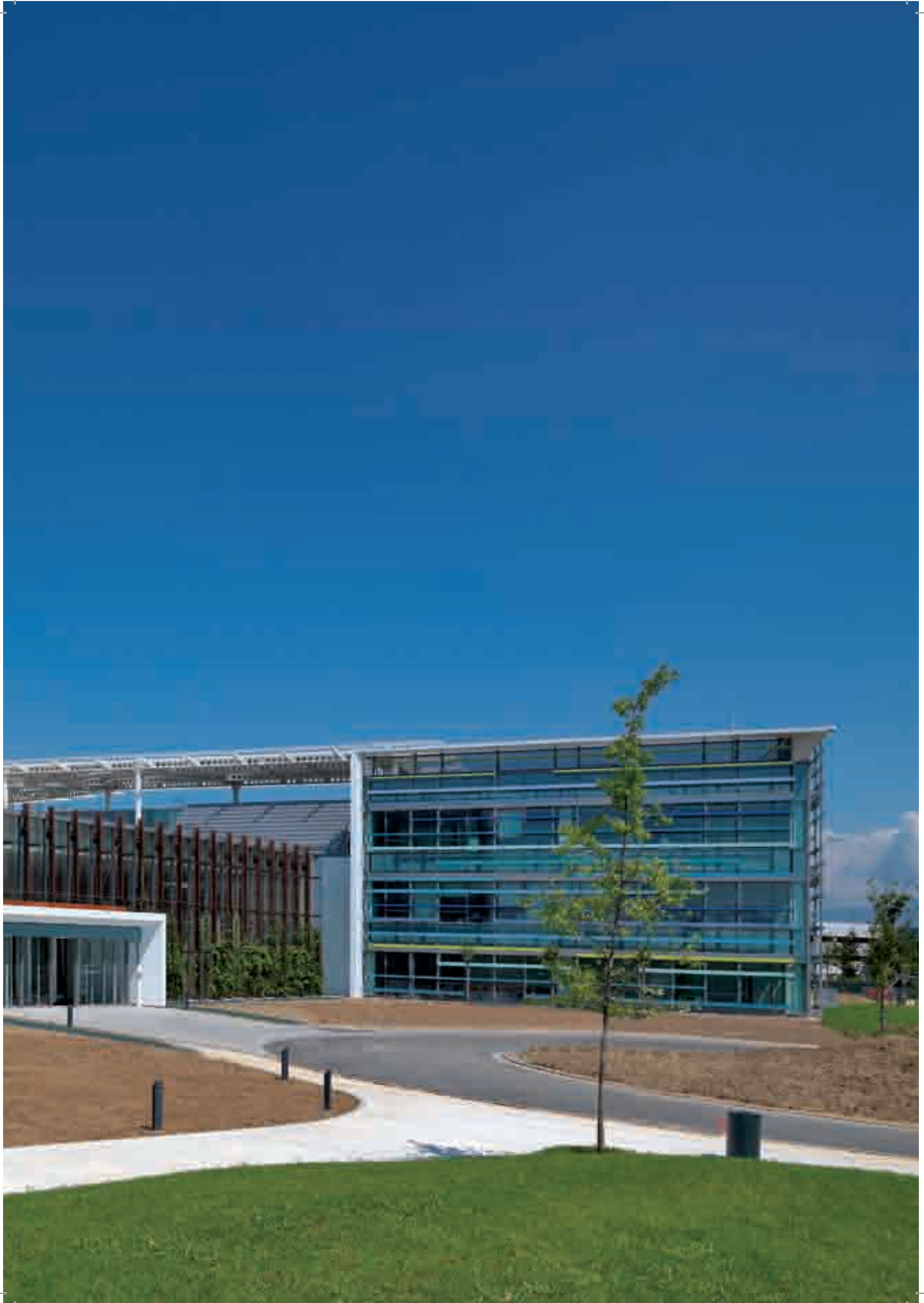












Progetto: Compact City (Nuovo Centro Civico Scandicci FI)
Progettista: Rogers Stirk Harbour + Partners
Committente: C.M.S.A.
Prodotto: Facciata strutturale montanti e traversi,
serramenti in alluminio a taglio termico,
rivestimenti in fibrocemento e cotto
Mq: 14.000

Réalisation: Compact City (Nouveau Centre Administratif Scandicci FI)
Architectes: Rogers Stirk Harbour + Partners
Maître d'ouvrage: C.M.S.A.
Produit: façade à montants et traverses,
menuiseries à rupture de pont thermique,
revêtements en fibrociment et terre cuite
Mq: 14.000

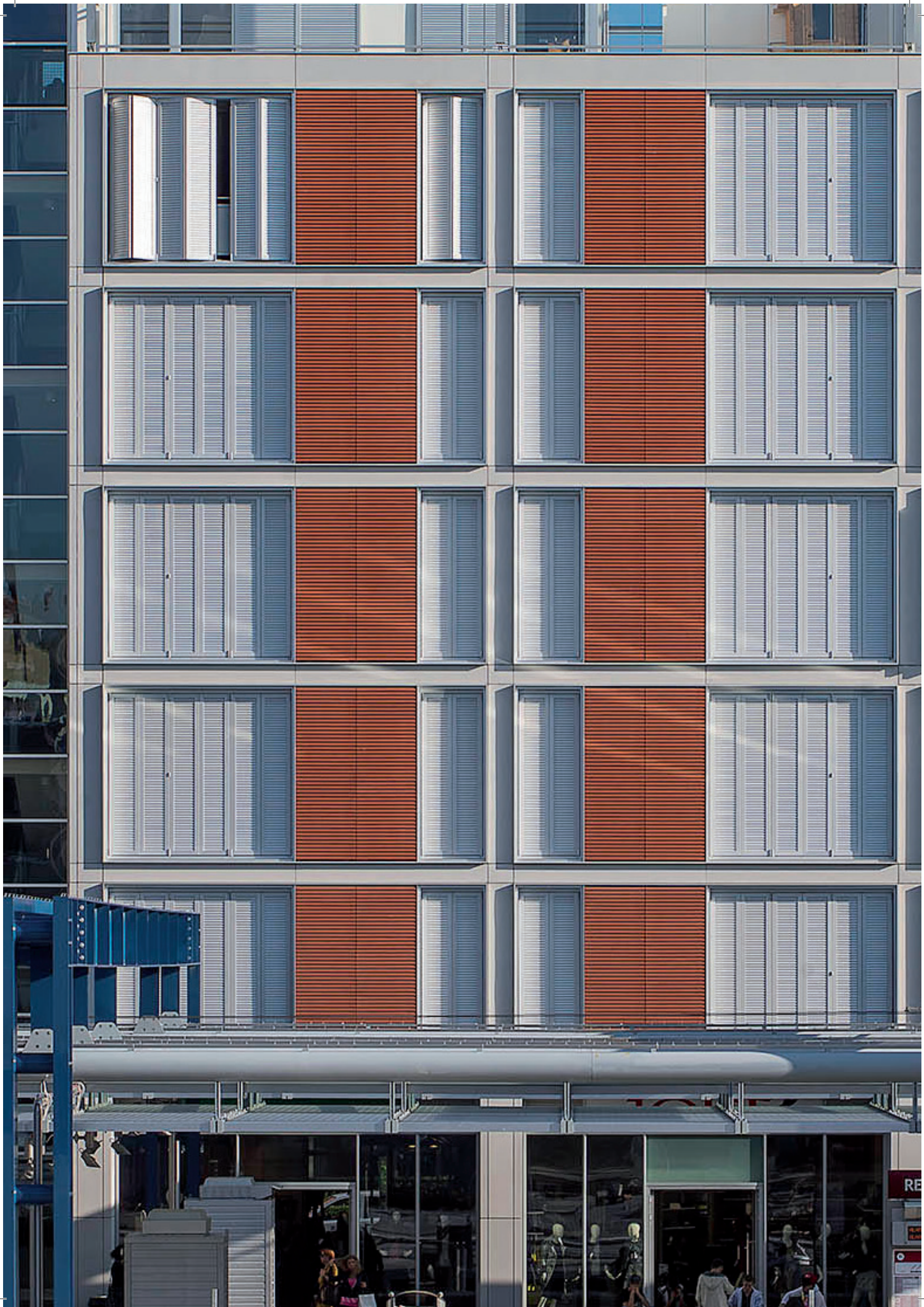


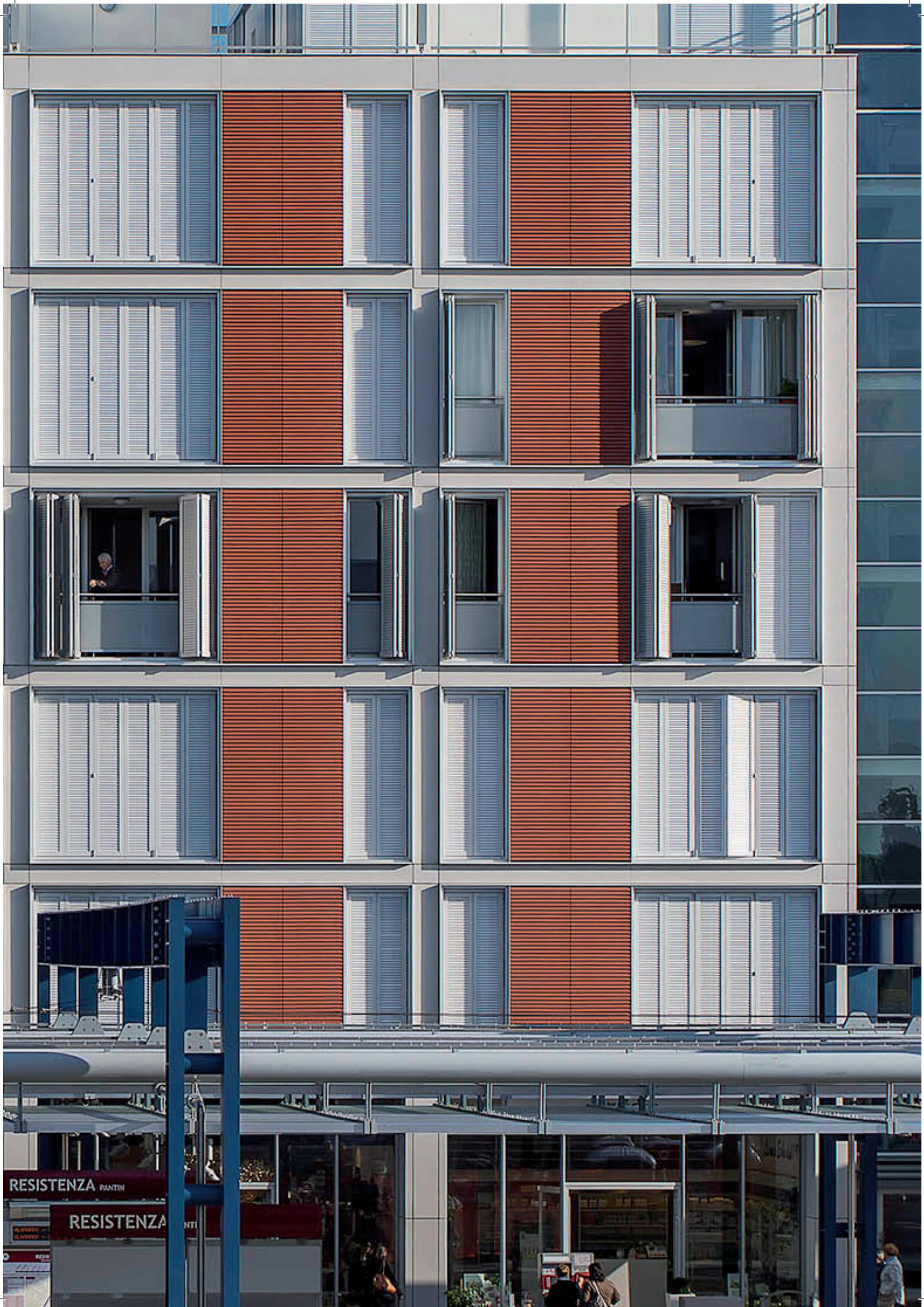
Project: Compact City (New Civic Center Scandicci FI)
Project by: Rogers Stirk Harbour + Partners
Customer: C.M.S.A.
Product: Structural mullion and transoms façade,
thermal-insulated metal frames,
terracotta and fiber cement cladding.
Mq: 14.000







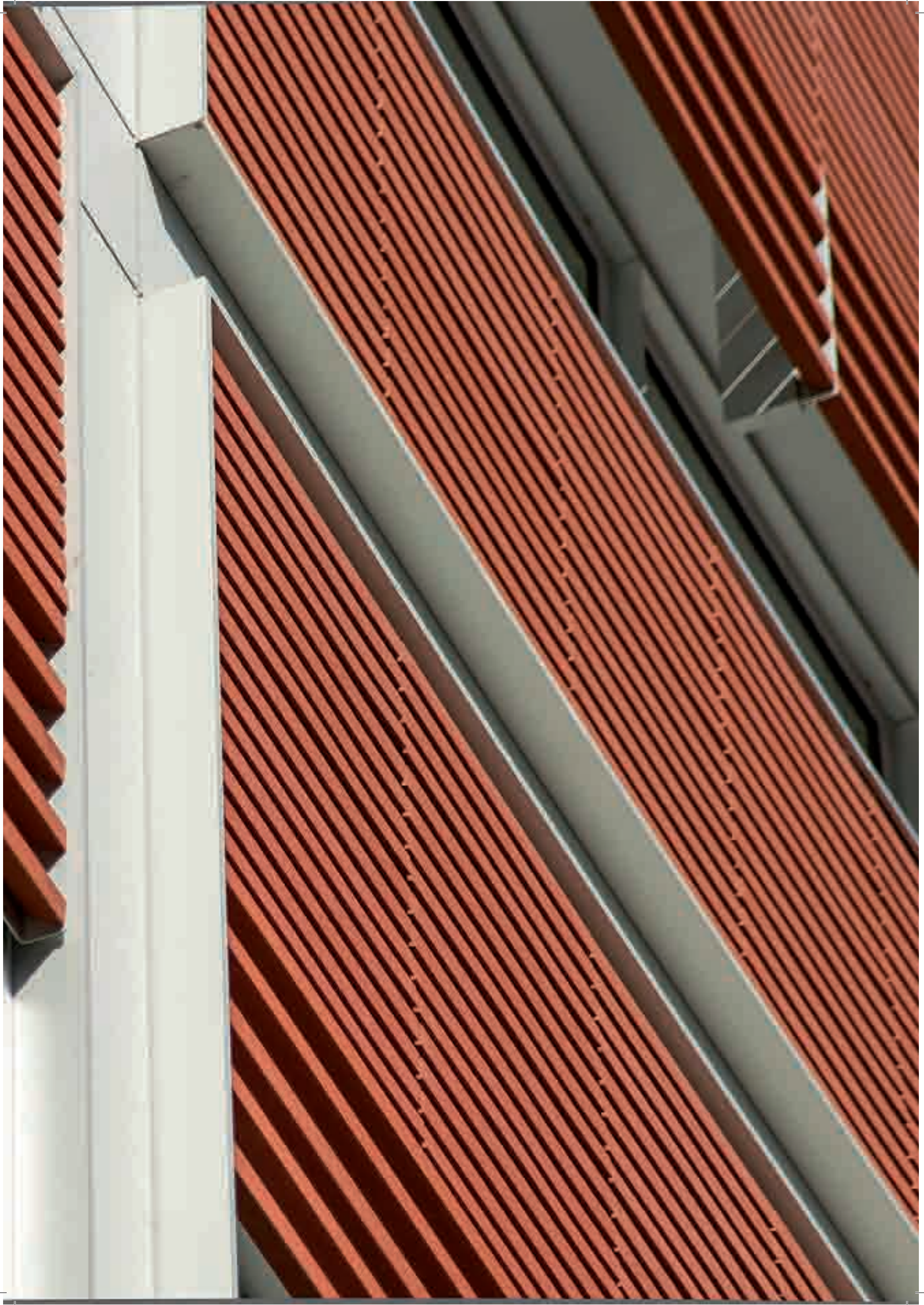








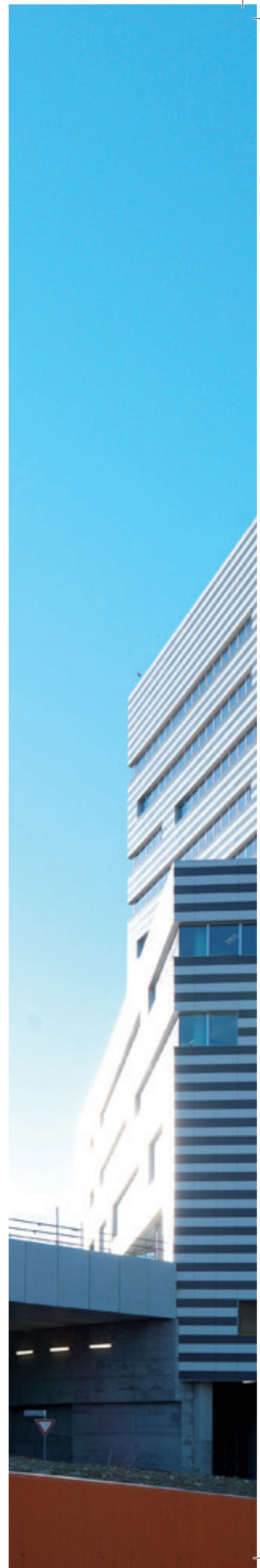


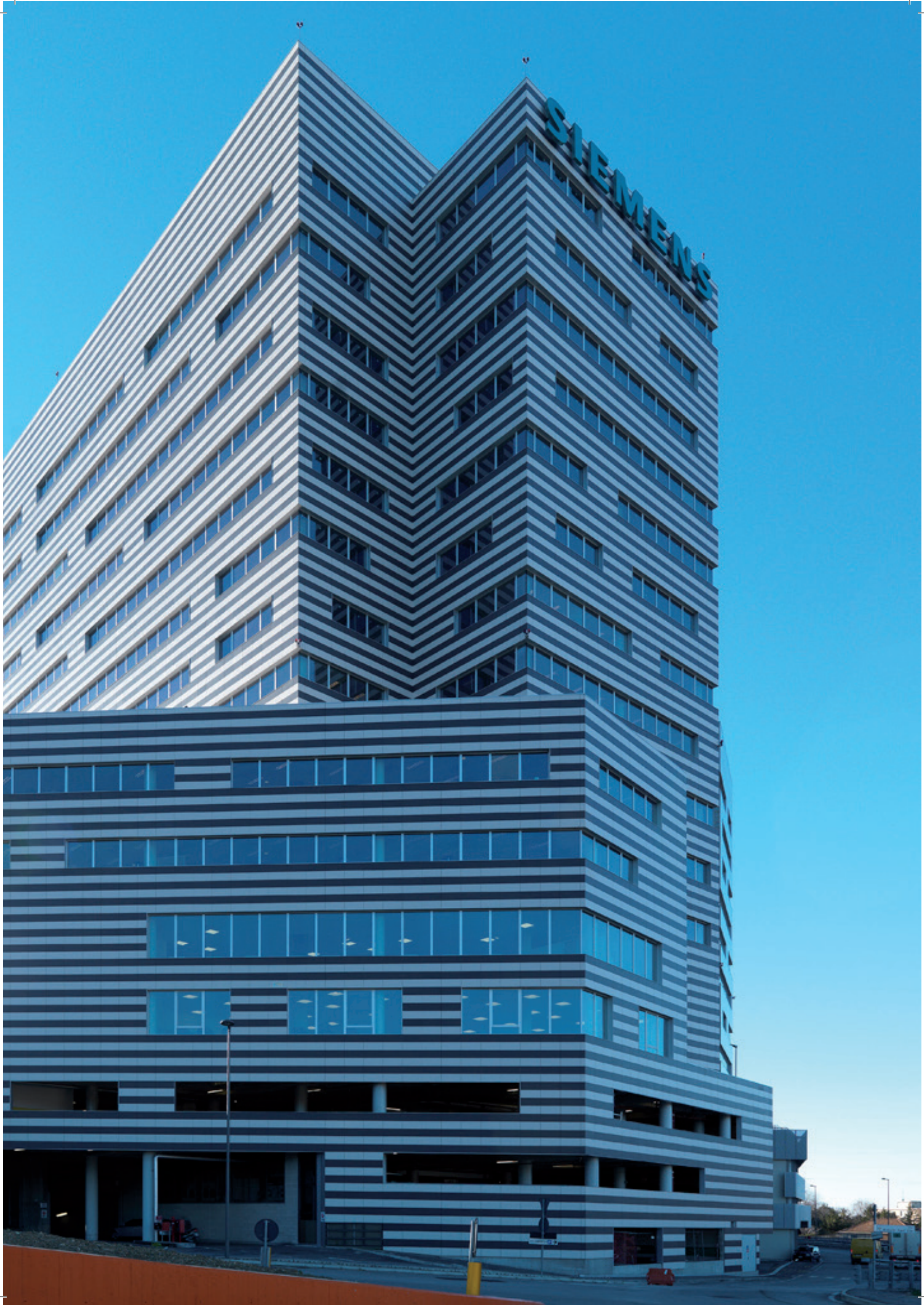


Progetto: Edificio Siemens - Parco scientifico e tecnologico Erzelli, Genova
Progettista: Studio Architettura Arch. Maria Giuseppina Faruffini
Committente : GENOVA HIGH TECH SPA
Prodotto: Pareti esterne con moduli metallici portanti, serramenti a nastro
in alluminio a taglio termico "COMFORT CF75" e rivestimento con facciata
ventilata in gres
Mq: 13.000

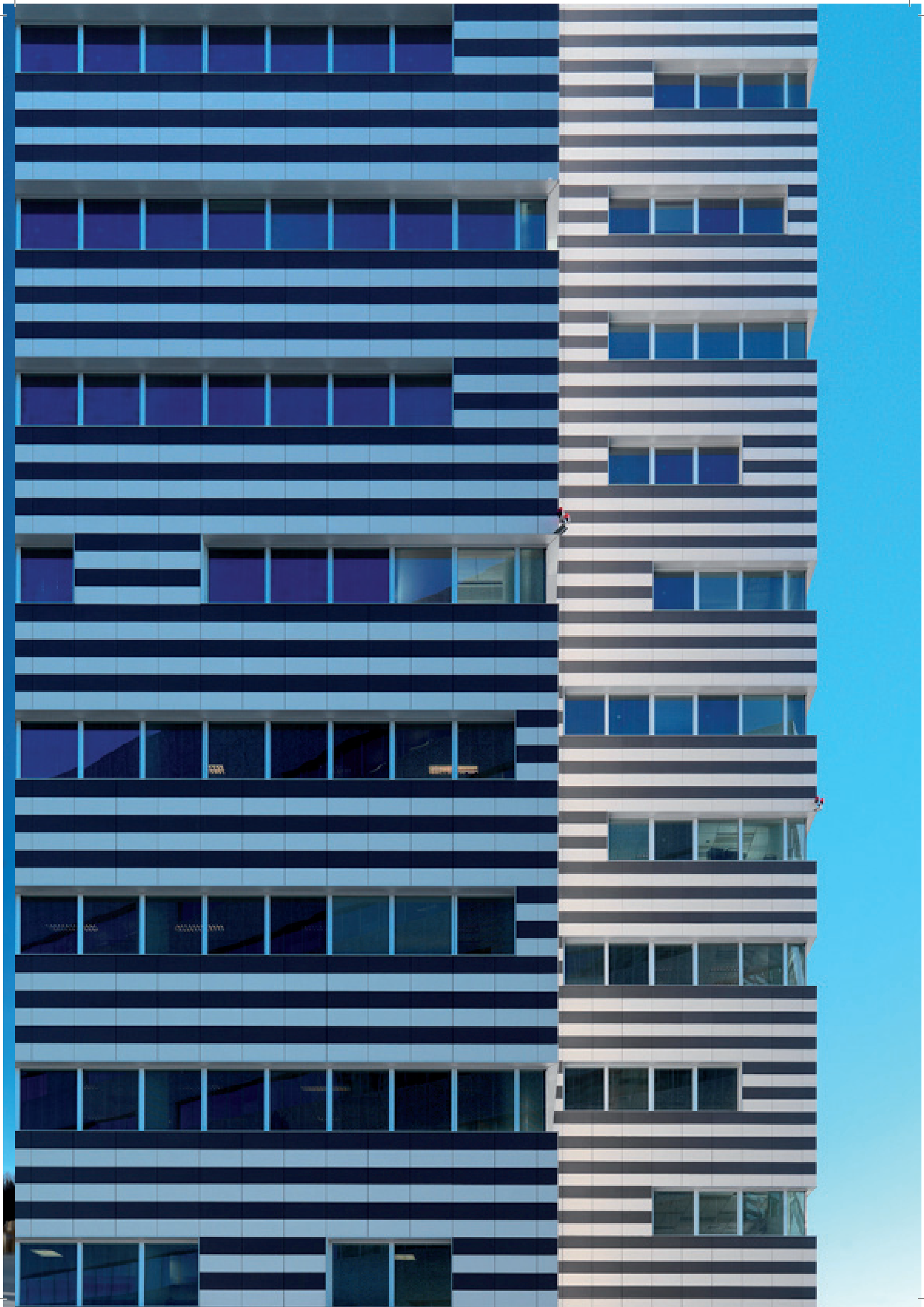
Réalisation: Bâtiment Siemens - Parc scientifique et technologique Erzelli, Gênes
Architectes : Cabinet d'Architecture Architecte Maria Giuseppina Faruffini
Maître d'ouvrage : GENOVA HIGH TECH SPA
Produit : Parois extérieures avec modules métalliques portants, menuiseries
à bandes en aluminium à rupture de pont thermique « COMFORT CF75 » et
revêtement avec façade ventilée en grès.
Mq: 13.000

Project: Siemens Building - Science and Technology Park ERZELLI, Genoa
Project by: Architecture Studio Maria Giuseppina Faruffini
Customer: GENOVA HIGH TECH SPA
Product: Outer walls with metallic load-bearing modules, thermal-insulated
aluminum "COMFORT CF75" metal frames and GRES façade cladding.
Mq: 13.000









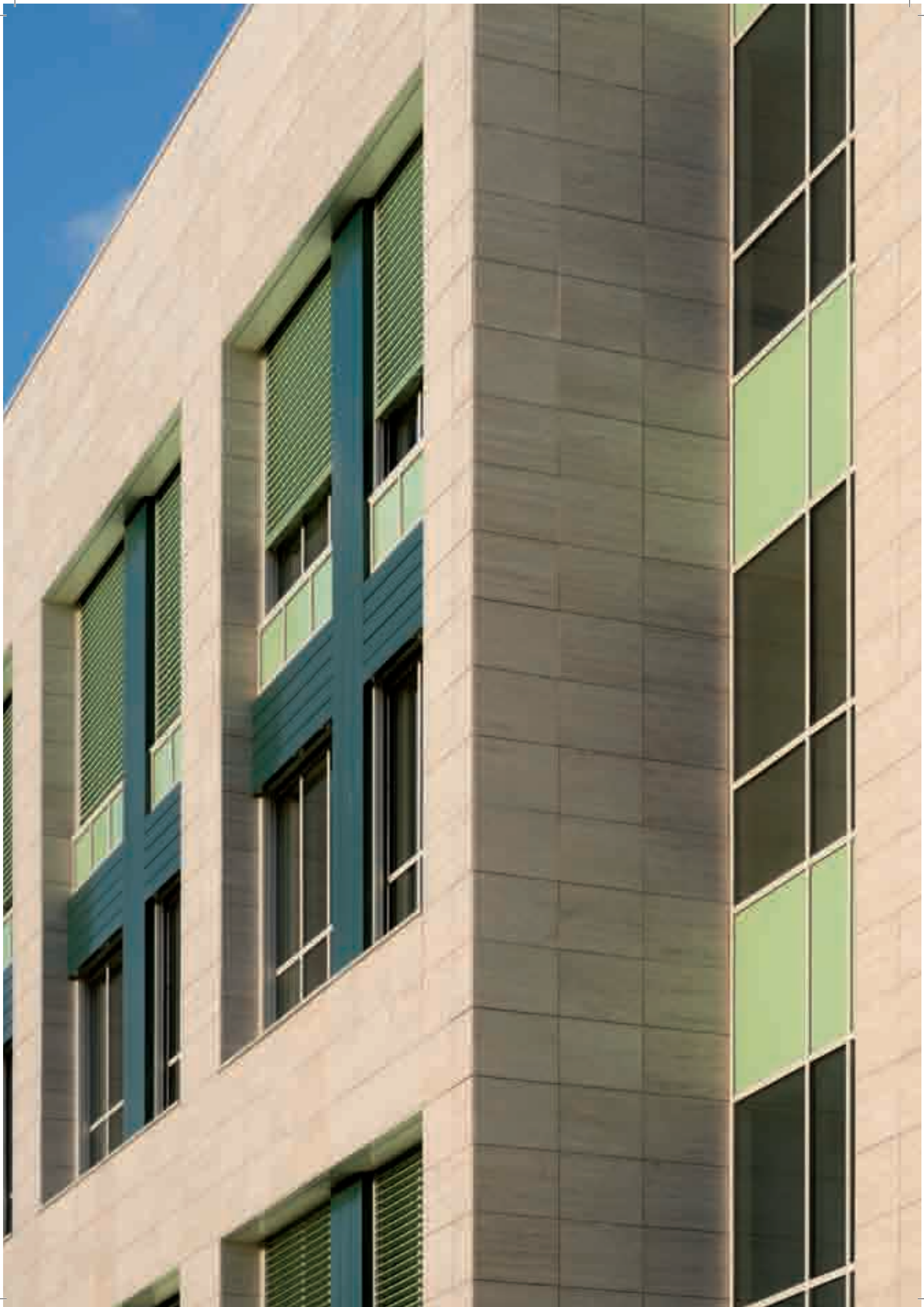


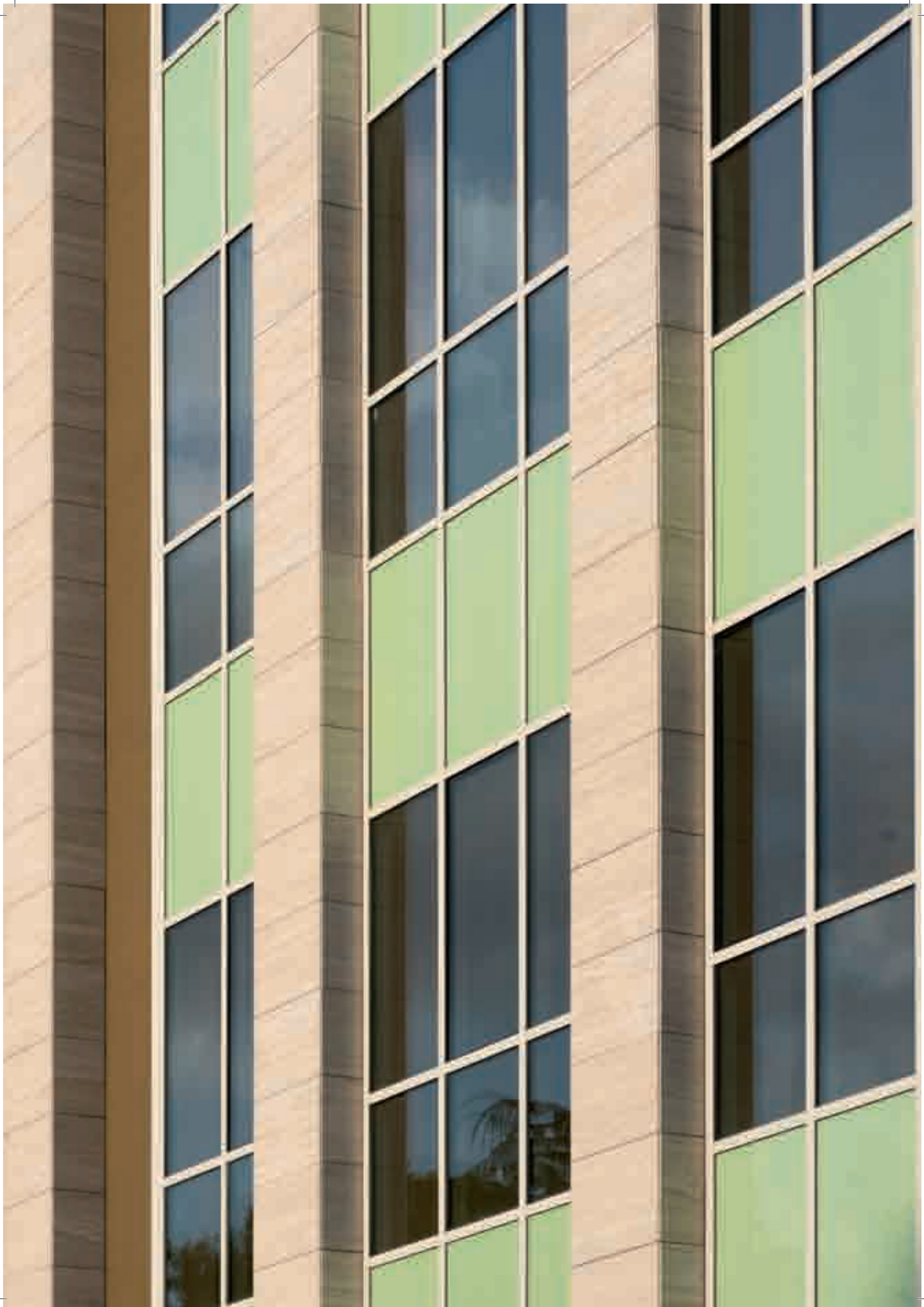


Progetto: Ospedale Niguarda "Ca' Granda" – Blocco Nord e Blocco Sud, Milano
Progettista: Sinesis – Arch. Lazzari
Committente : NICO Società Consortile
Prodotto: Facciata "INDOOR", serramenti a taglio termico di serie dedicata e copertura galleria in facciata "THERMOFAC"
Mq: 24.000

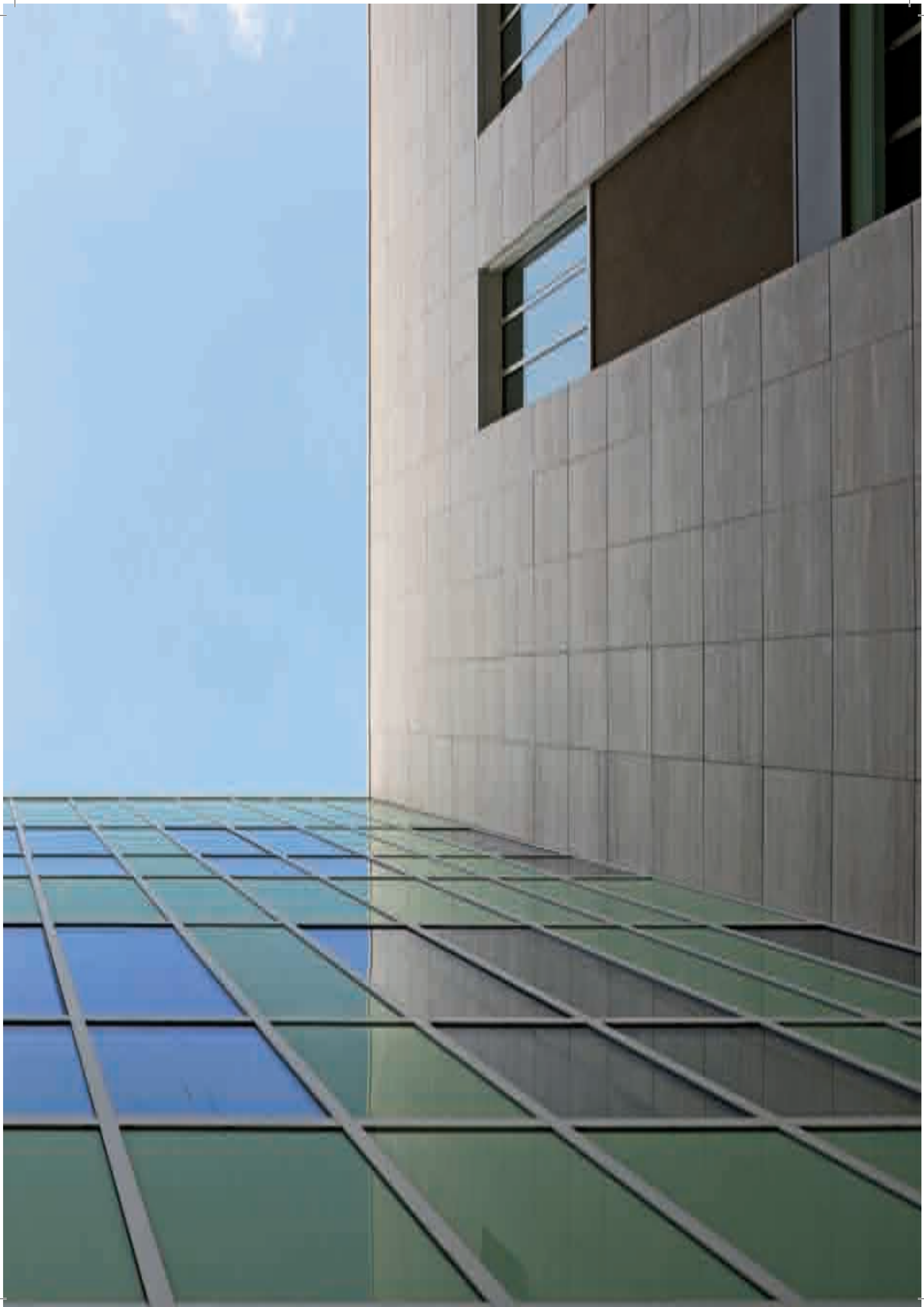
Réalisation: Hôpital Niguarda «Ca' Granda» - Bloc Nord et Sud, Milan
Architectes: Sinesis - Architecte Lazzari
Maître d'ouvrage: NICO Société Consortiale
Produit: mur-rideau «INDOOR», menuiseries à rupture de pont thermique en série spéciale dédiée, couverture galerie et façade « THERMOFAC »
Mq: 24.000

Project: Niguarda "Ca' Granda" hospital – North and south wing, Milan
Project by: Sinesis – Architect Lazzari
Customer: NICO – Consortium
Product: "INDOOR" curtain wall, dedicated special thermal-insulated metal frames, gallery envelope and "THERMOFAC" façade.
Mq: 24.000



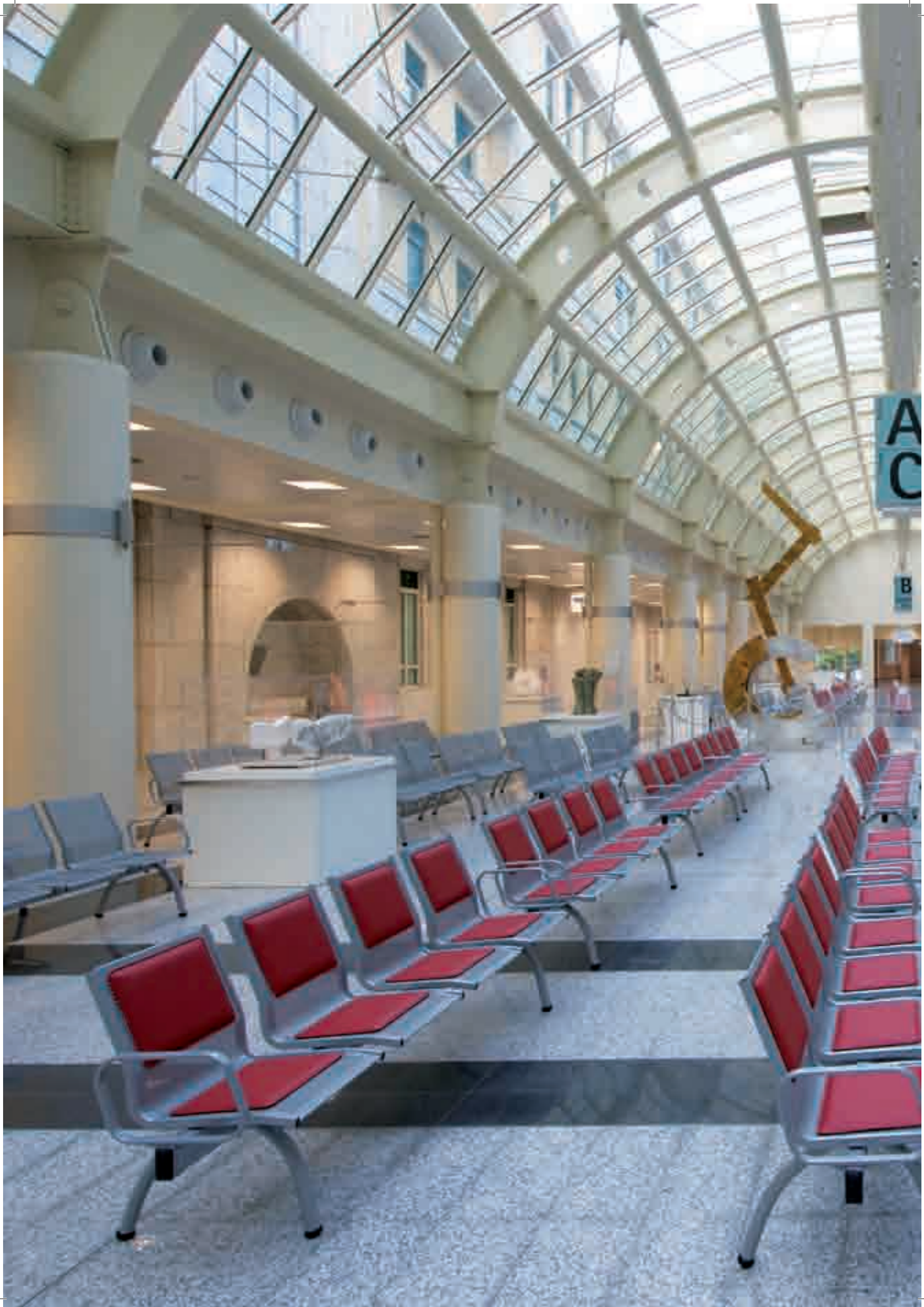














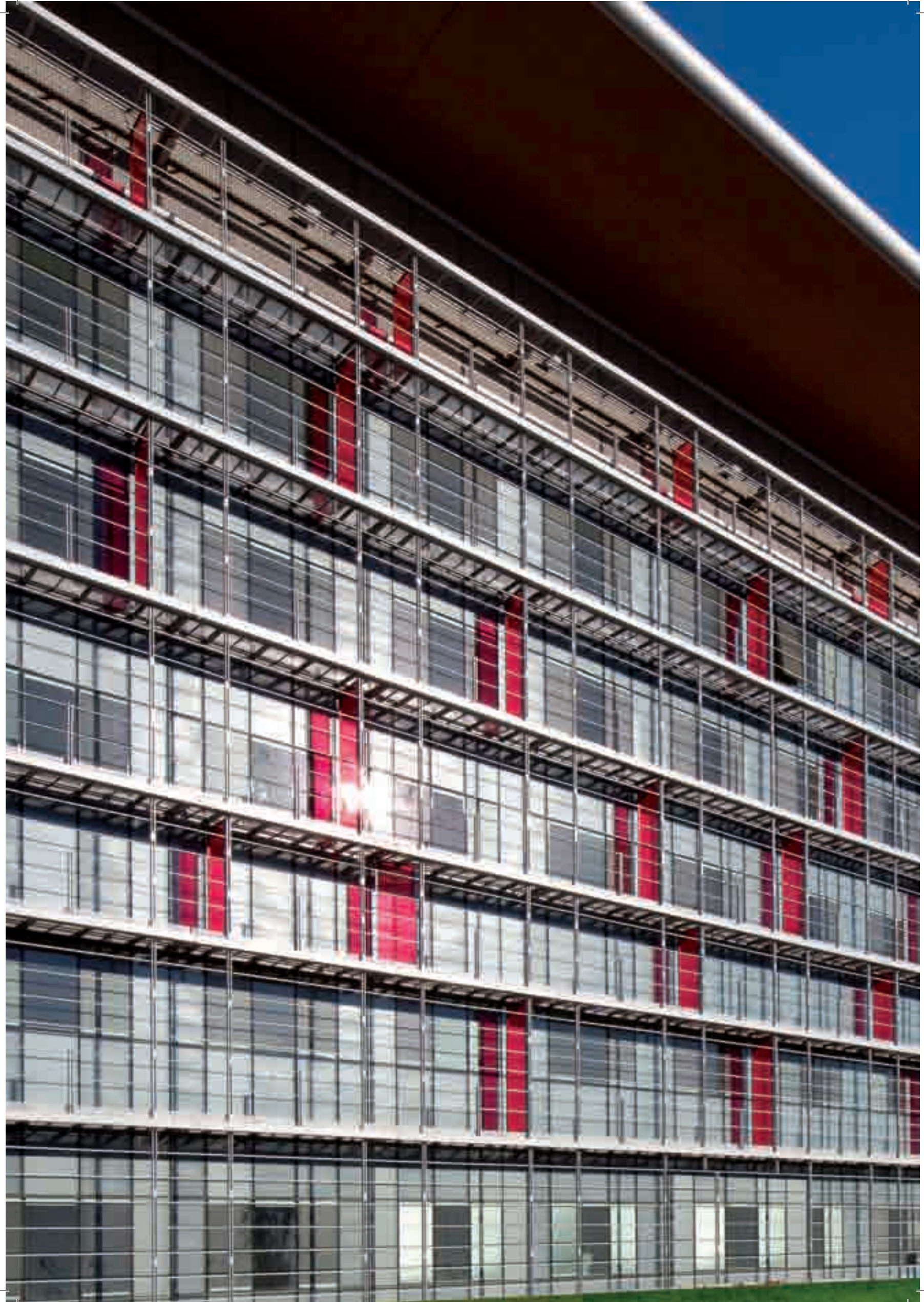
Progetto: Ospedale Papa Giovanni XXIII, Bergamo
Progettisti: Arch. Aymeric Zublena – Arch. Ass.ti Studio Traversi
Committente: Bergamos
Prodotto: Facciata strutturale montanti e traversi e facciata dedicata centro congressi
Si precisa che Giuliani per questa opera ha unicamente realizzato quanto evidenziato nelle allegate immagini:
- involucro esterno 7 torri principali di degenza;
- alcuni corpi di collegamento;
- facciata centro congressi.
Mq : 9.000

Réalisation: Hôpital Papa Giovanni XXIII, Bergamo
Architectes: Architecte Aymeric Zublena – Architecte Ass.ti Studio Traversi
Maître d'ouvrage: Bergamos
Produit: Mur-rideau structurel et façade dédiée du centre congrès
Nous tenons à préciser que l'entreprise Giuliani, pour ce projet, a seulement réalisé les œuvres montrées dans les images suivantes :
- revêtement extérieur 7 tours principaux
- quelque corps de liaison
- mur-rideau du centre de congrès
Mq: 9.000

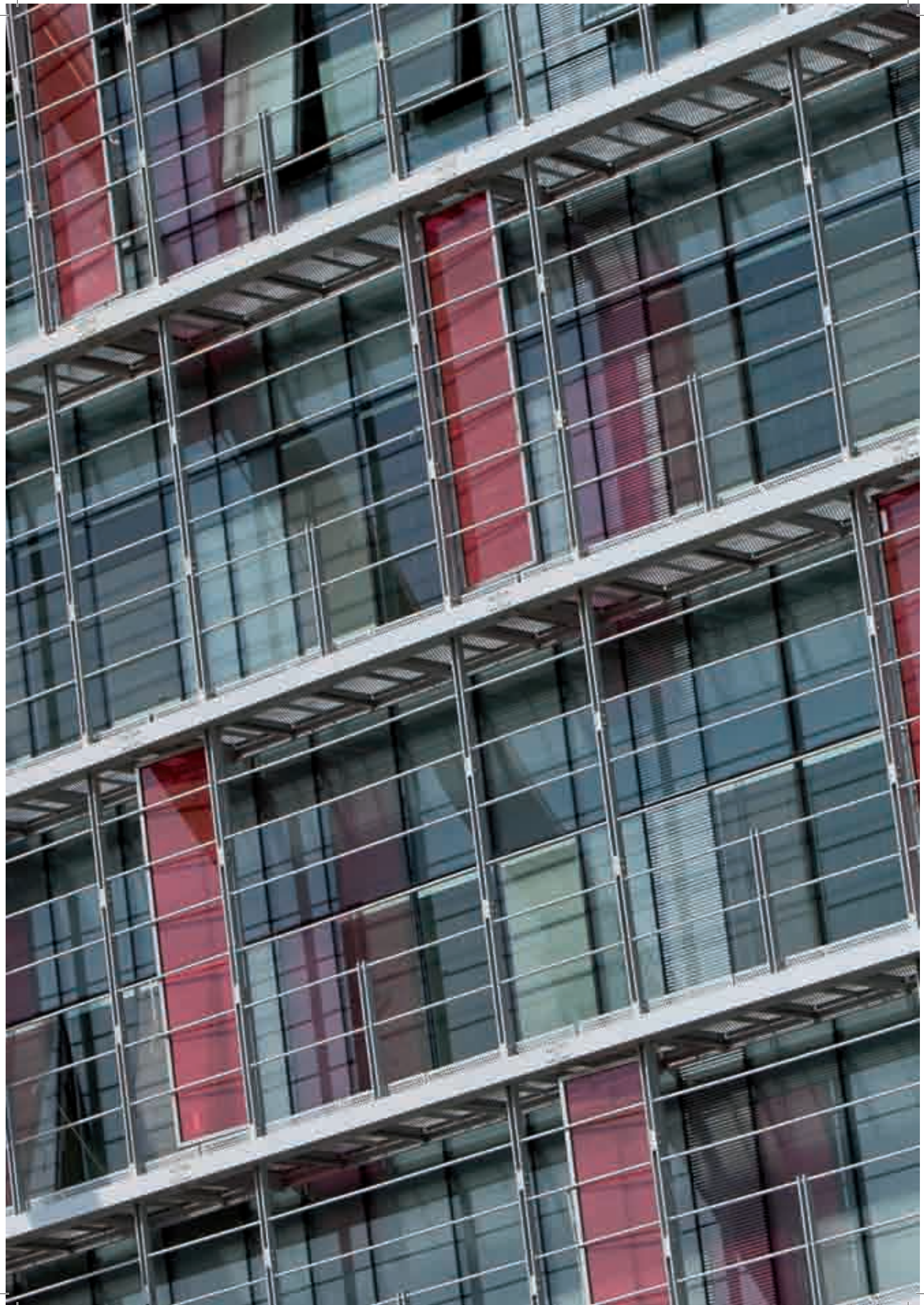


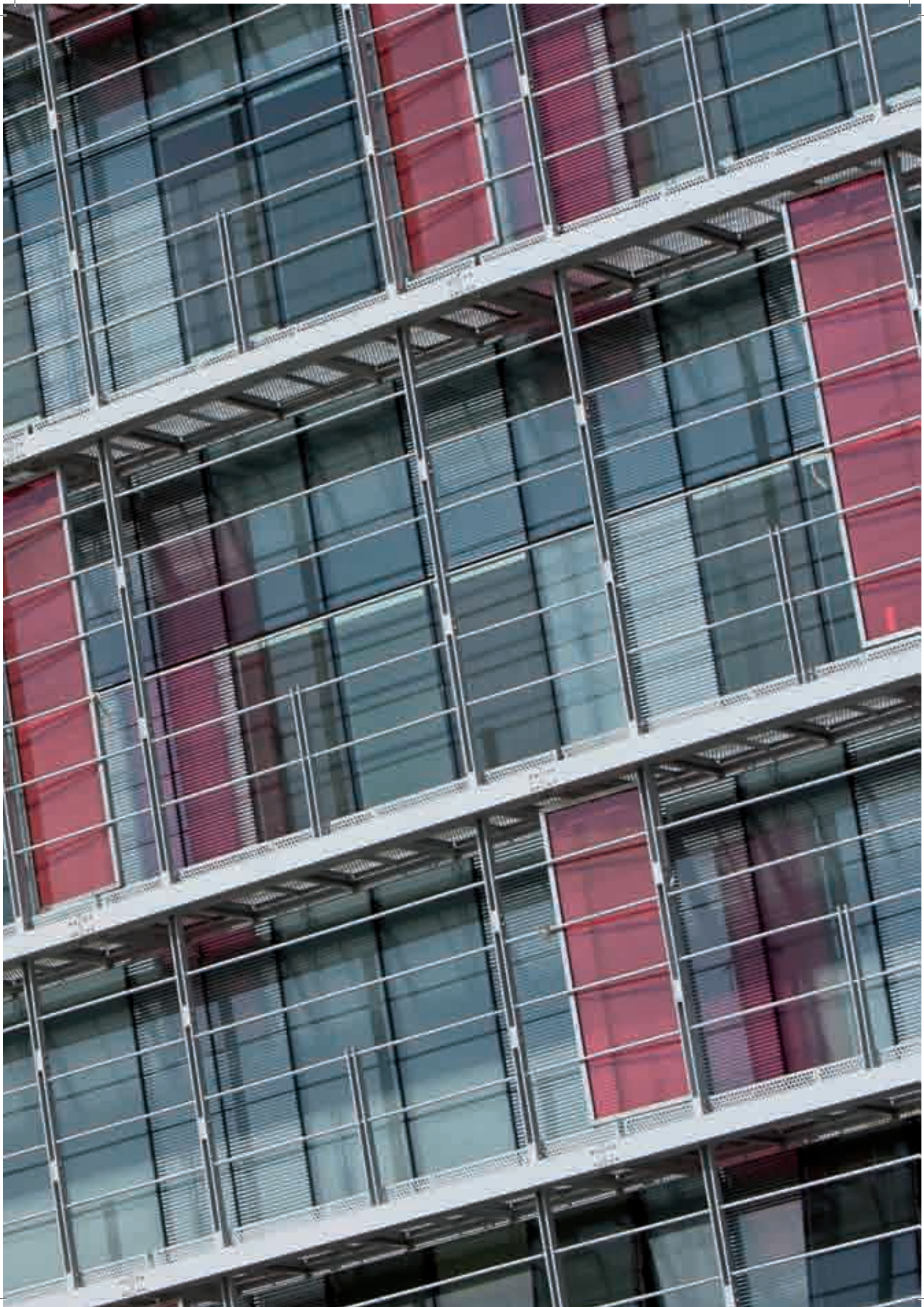
Project: **Pope Johannes XXIII Hospital, Bergamo**
Project by: **Arch. Aymeric Zublena – Arch. Ass.ti Studio Traversi**
Customer: **Bergamos**
Product: **Structural curtain wall and meeting center's façade.**
We would like to clarify that regarding this project Giuliani has only created what shown in the pictures below :
- external shell of the 7 main towers
- some linking structures
- meeting Center's curtain wall
Mq: 9.000











Progetto: Nuova sede Cedacri, Parma
Progettista: Arch. Mambriani Andrea
Committente: IMPAR Soc. Cons. a r.l.
Prodotto: Facciata montanti e traversi,
serramenti in alluminio a taglio termico,
frangisole tensionato in rame ed acciaio inox
Mq: 4.000

Réalisation: Nouveau Siège Cedacri, Parma
Architectes: Architecte Mambriani Andrea
Maître d'ouvrage: IMPAR Soc. Cons. à r.l.
Produit: façade montants et traverses, menuiseries
aluminium à rupture de pont thermique, brise-soleil
en cuivre et acier inoxydable.
Mq: 4.000



Project: New Head Office Cedacri, Parma
Project by: Arch. Mambriani Andrea
Customer: IMPAR Consortium
Product : Mullions and transoms curtain walls,
thermal-insulated aluminum fixtures, copper
and stainless-steel sunscreens
Mq: 4.000







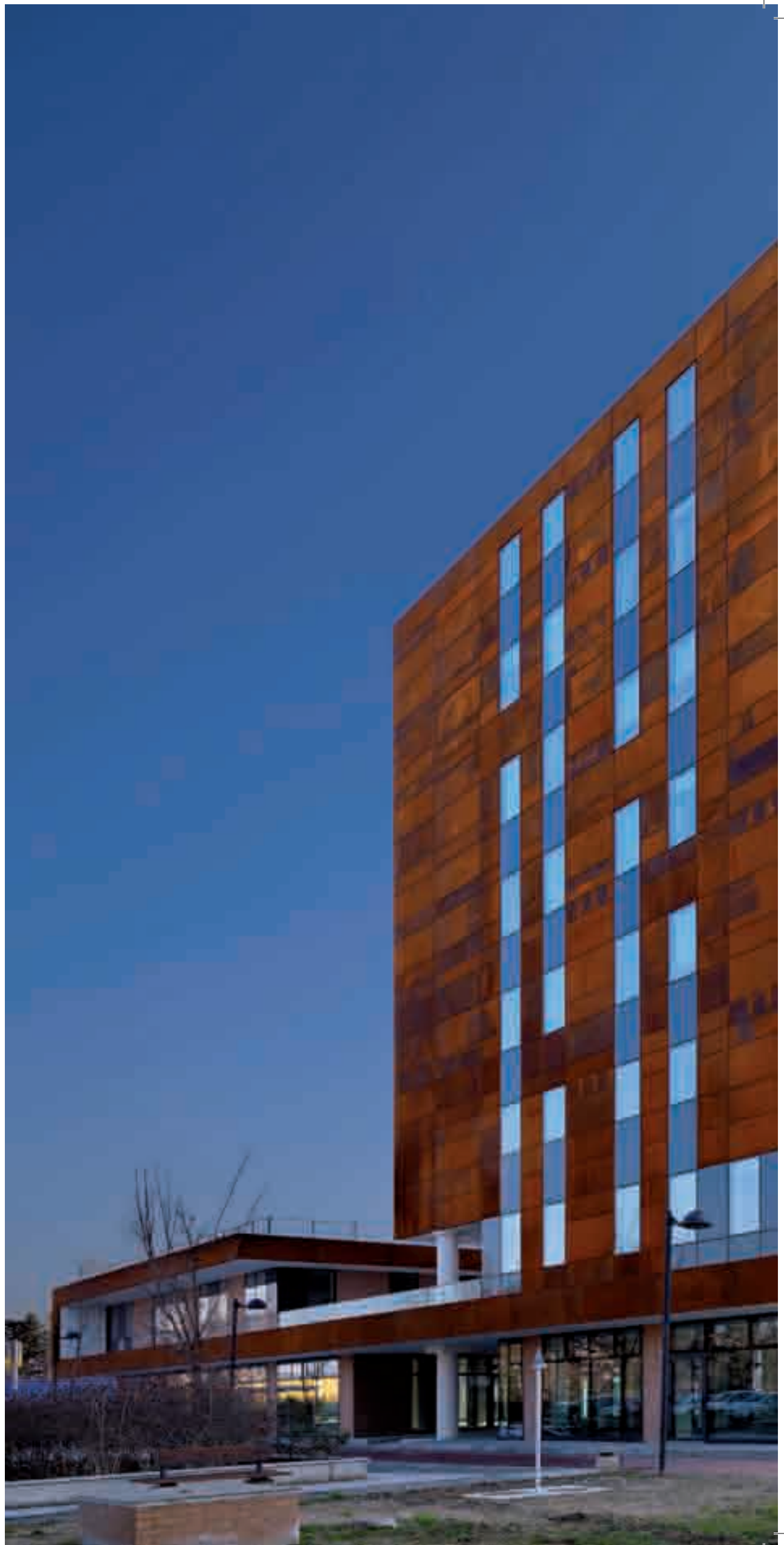
Progetto: Centro Commerciale – Direzionale,
Area "Ex cantine Riunite", Reggio Emilia
Progettista: Cairepro
Committente: Unieco
Prodotto: Facciata strutturale montanti e
traversi e finiture varie
Mq: 5.000

Réalisation: Centre Commercial – Centre Directionnel,
« Ancien espace Cantine Riunite », Reggio Emilia
Architecte: Cairepro
Maître d'ouvrage : Unieco
Produit: Mur-rideau structurel et finitions.
Mq: 5.000

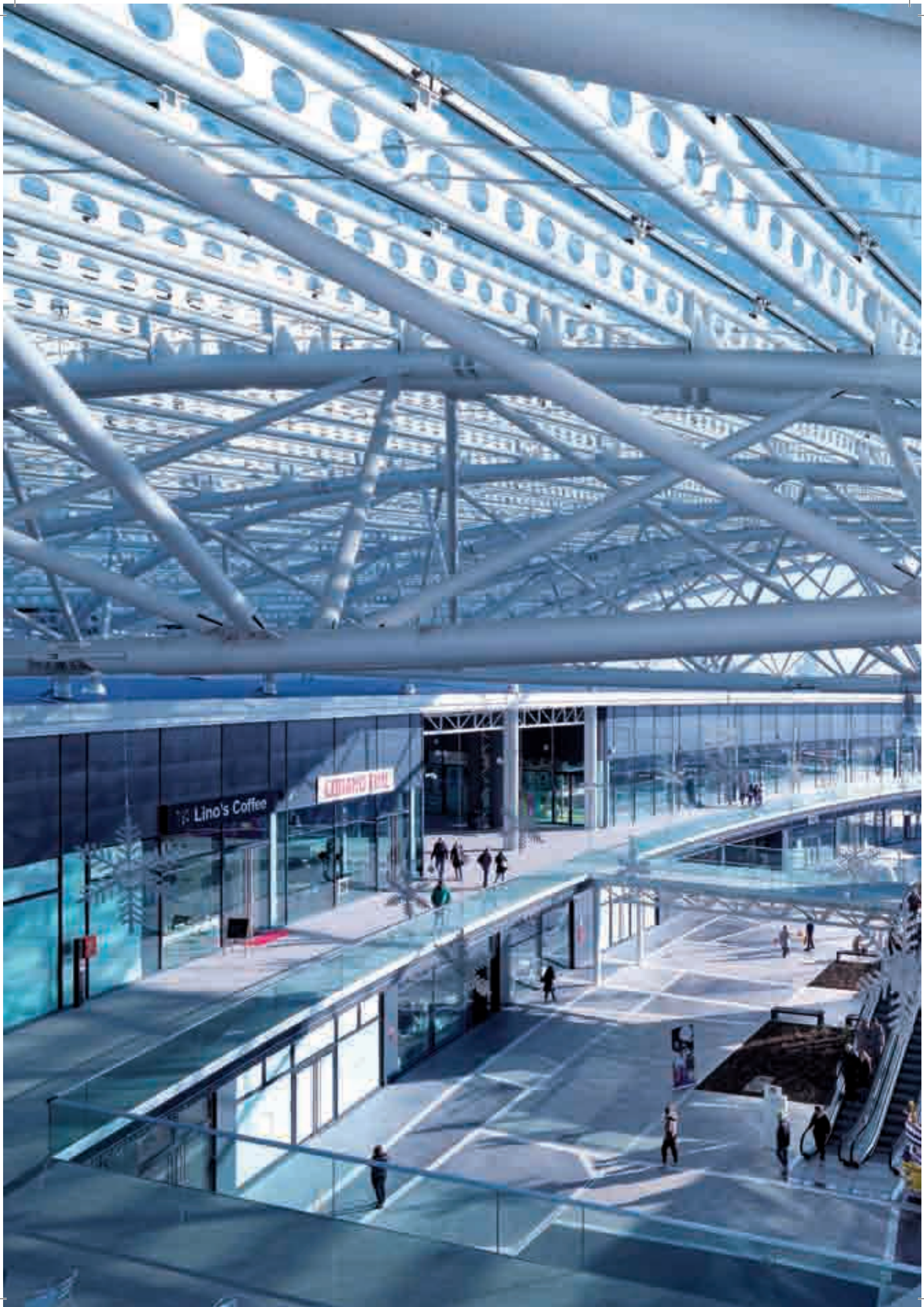


Project: Shopping Center – Head Office,
“Ex Cantine Riunite” Area, Reggio Emilia
Project by: Cairepro
Customer: Unieco
Product: Structural façade and finishing
Mq: 5.000











Progetto: Centro Commerciale PR Retail, Parma
Progettista: Arch. Giorgio Signorotto – Arch. Pietro Zanlari
Prodotto: Facciate, vetrine, coperture, pensiline e parapetti
Mq: 11.000

Réalisation: Centre Commercial PR Retail, Parme
Architectes: Architecte Giorgio Signorotto – Architecte Pietro Zanlari
Produit: façades, vitrines, couvertures, verrières et garde-corps
Mq: 11.000

Project: Shopping Center "PR Retail", Parma
Project by: Arch. Giorgio Signorotto – Arch. Pietro Zanlari
Product: Curtain walls, shop windows, coverings, canopies and railings
Mq: 11.000









GIULIANI
Involucri edili e serramenti metallici

GIULIANI
Involucri edili e serramenti metallici

GIULIANI
GIULIANI

