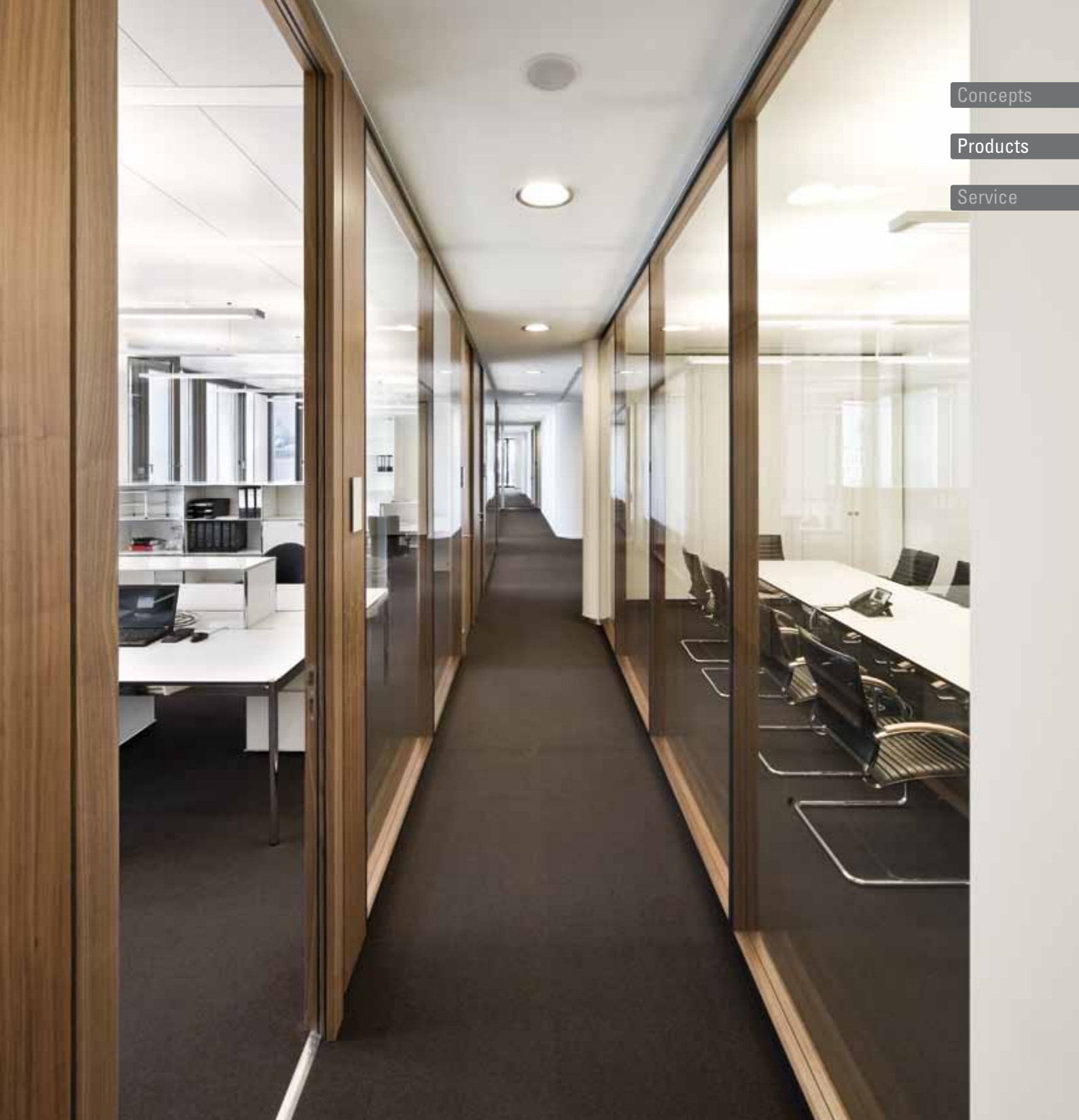


Concepts

Products

Service



Glass partitions – Lindner Life



Lindner

Building New Solutions

Building new solutions.

Lindner undertakes major worldwide projects in all areas of interior finishes, insulation technology, industrial services and building facades. From pre-planning through to project completion Lindner is your partner of choice.

The Company's extensive manufacturing capability enables quality to be strictly maintained whilst allowing maximum flexibility to meet individual project requirements.

Environmental considerations are fundamental to all Lindner's business principles.

Through partnerships with clients Lindner turns concepts into reality.

Choosing Lindner you have:

Lindner Concepts:
Tailored solutions specifically geared to satisfy individual project requirements

Lindner Products:
Quality materials and systems to the very highest industry standards

Lindner Service:
Comprehensive project management services

A systematic approach

Lindner Life

Glass offers you nearly limitless possibilities for the design of your rooms. It gives your partitions a high-quality appearance and creates bright, open spaces. With its sound-proofing properties it enables you to work undisturbed and in peace, which is an ideal condition for an office.



Federation Tower, Moscow – Glass Partition Lindner Life 125

Advantages at a glance

- Single or double glazings, dependent on the system
- Frames with different visible widths
- Versatile designs
- A high level of flexibility due to easy demountability and reassembly

Lindner Life 110

Lindner Life 110 is a single-glazed system with two double-sided non load-bearing aluminium frames. Depending on the requirements the frames can be finished with an anodised or powder-coated surface, or even real wood veneer.

Whether vertically or horizontally installed, the glass panels accentuate the system's clean lines. A special feature of the system is its combination of aesthetics with outstanding high technical performance.

The structure can be used in full, partial or even fanlight glazing applications.



RTL Radio, Berlin – Glass Partition Lindner Life 110

Advantages at a glance

- Different glass thicknesses available
- Same level of aesthetic despite different structural requirements
- Meets different fire performance requirements, depending on the thickness

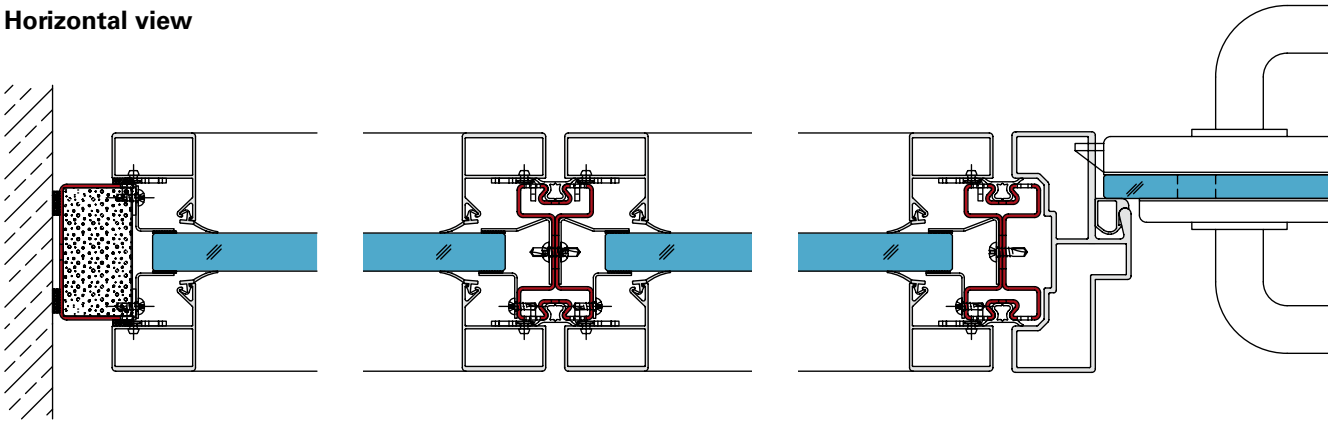


Unilever Hamburg – special construction Glass Partition Lindner Life 110

Photo: © Sabine Vielmo

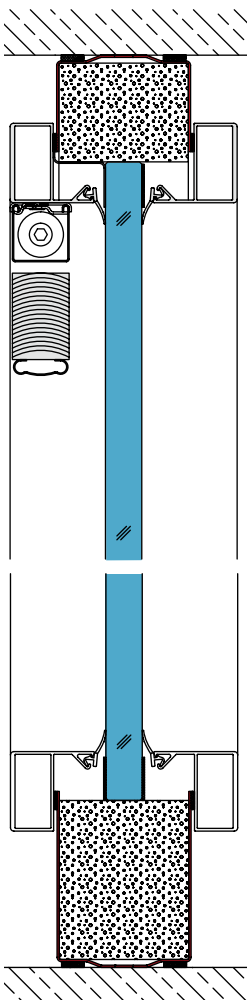
Technical information

Horizontal view



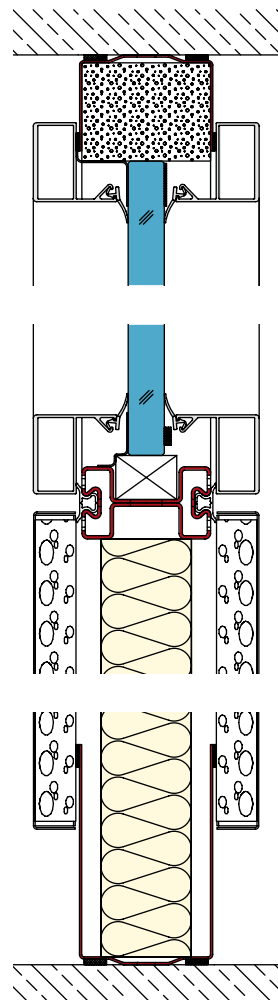
Vertical view

Glass partition with blinds



Vertical view

Glass partition as fanlight glazing



Construction options	Single glazing 100 mm fully glazed partition 125 mm fully glazed partition
Areas of application	Office and conference rooms Industrial and factory areas Training and research facilities
Measurements	Depending on material used
Joint width	6 / 8 mm
Wall thickness	100 and 125 mm
Module width	Standard up to 1250 mm
Height	Standard up to 3500 mm (undivided 3000 mm)
Weight	At least 30 kg / m ² as fully glazed partition depending on requirements
Substructure	Constructed from folded or rolled steel sheet profiles, zinc coated or powder-coated
Sound insulation	Achieves up to 46 dB R _w tested according to DIN EN ISO 140-03 Dependent on panel construction
Build connections	Connection accessories: A concealed hook-on system for the installation of Lindner Plus Organisation is installed over the entire system stud in the vertical shadow gap. Joint seals: Seals are installed on floor, ceiling and support profiles. Connections: Relocated floor, ceiling and wall connections
Tolerances	± 10 mm in height and width
Combineable wall panels	Metal panels with gypsum board inlay, 19 mm Wooden panels, 19 mm Acoustic elements in timber and metal
Glass	Safety glass, standard 7 to 36 mm, depending on requirement
Visible width aluminium frame	35 mm
Fire resistance	F30 tested according to DIN 4102 G30 tested according to DIN 4102 EI30 tested according to EN 13501-2 EI60 tested according to EN 13501-2
Structural performance	Installation area 1 and 2 Non load-bearing partition wall tested to DIN 4103 Fall safety, category A according to TRAV
Applicable standards	DIN 18202, DIN 1249, DIN EN ISO 12543

Customised, project specific solutions possible





Lindner Life 125

The glass partition system Lindner Life 125 is constructed with two glazed aluminium frames fitted back to back, with powder-coated or anodised surface. The system offers a variety of acoustic performances. A particular feature of the system is its flush appearance.

You have the option of vertical or horizontal installation of the panel, for full, partial or fanlight glazing.



Office Park, Belgrade – Glass Partition Lindner Life 125

Advantages at a glance

- Integration of manual or electrical venetian blinds
- Economic benefits due to ease of construction and customised product sizes
- Aluminium frame at the perimeter with a flush mounted glazing effect
- Single or double glazing



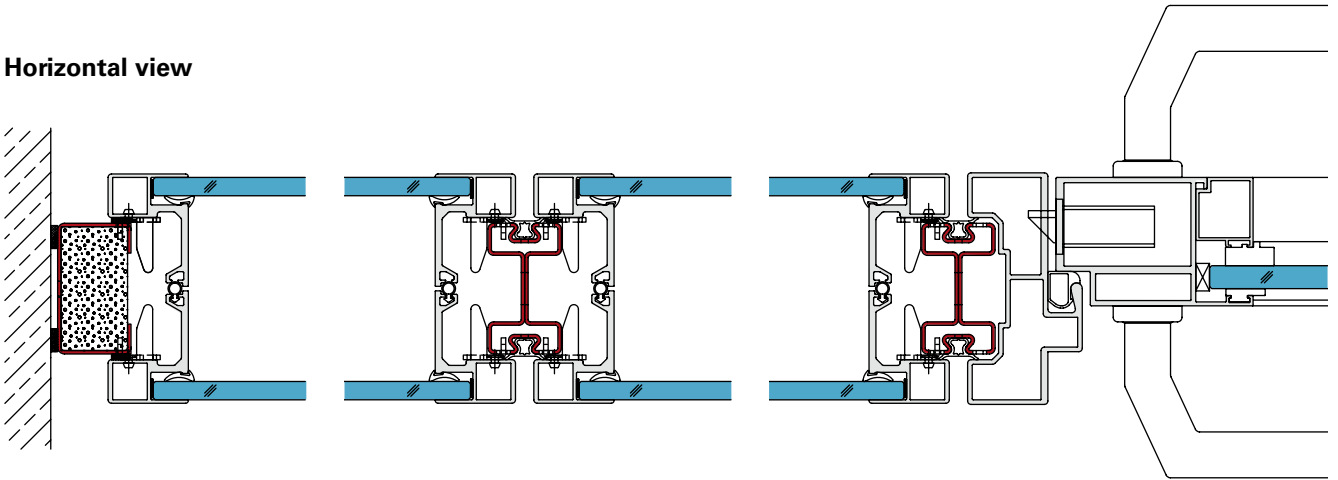


428
SMOKING ROOM



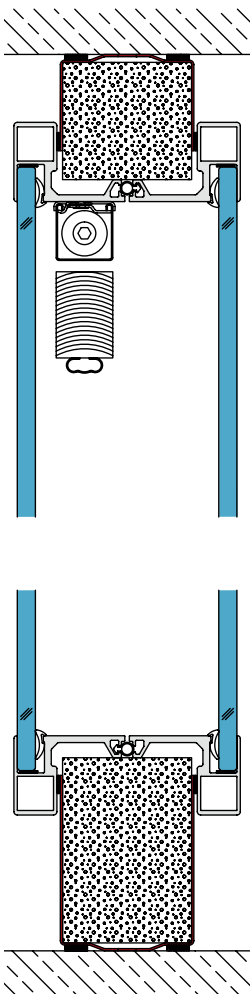
Technical information

Horizontal view



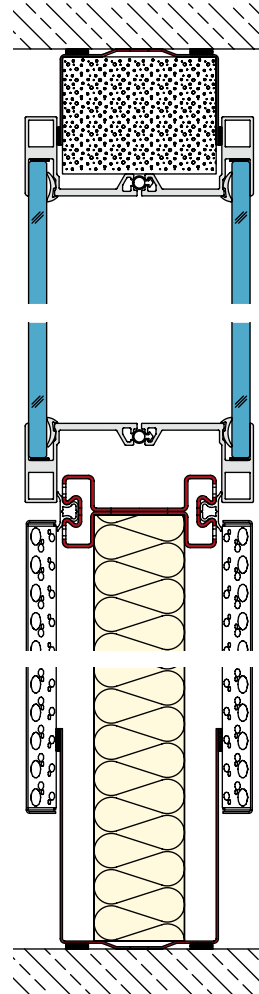
Vertical view

Glass partition with blind



Vertical view

Glass partition as fanlight glazing



Construction options	Single glazing Double glazing 100 mm fully glazed partition 125 mm fully glazed partition
Areas of application	Office and conference rooms Industrial and factory areas Training and research facilities
Measurements	Depending on material used
Joint width	6 / 8 mm
Wall thickness	100 and 125 mm
Module width	Standard up to 1500 mm
Height	Standard up to 3500 mm (undivided 3000 mm)
Weight	At least 40 kg / m ² as fully glazed wall, depending on requirements
Substructure	Constructed from folded or rolled steel sheet profiles, zinc coated or powder-coated
Sound insulation	100 mm wall thickness up to 50 dB R _w according to DIN EN ISO 140-03 125 mm wall thickness up to 51 dB R _w according to DIN EN ISO 140-03
Build connections	Connection accessories: A concealed hook-on system for the installation of Lindner Plus Organisation is installed over the entire system stud in the vertical shadow gap. Joint seals: Seals are installed on floor, ceiling and support profiles. Connections: Relocated floor, ceiling and wall connections
Tolerances	± 10 mm in height and width
Combineable wall panels	Metal panels with gypsum board inlay, 19 mm Wooden panels, 19 mm Acoustic elements in timber and metal
Glass	Safety glass, pane thickness depending on requirements
Visible width aluminium frame	35 mm
Fire resistance	F30 tested according to DIN 4102 EI30 tested according to EN 13501-2 EI60 tested according to EN 13501-2
Structural performance	Installation area 1 and 2 Non load-bearing partition wall tested according to DIN 4103 Fall safety category A according to TRAV
Applicable standards	DIN 18202, DIN 1249, DIN EN ISO 12543

Customised, project specific solutions possible





Lindner Life 137

The system Lindner Life 137 with flush-mounted, bonded glazings brings a sense of transparency and space into the room. The unique bonding technology from Dow Corning eliminates the need for finishing at the edges and is guaranteed for durability and longevity. The panels can be installed vertically or horizontally for full, partial or fanlight glazing.

Additionally, venetian blinds can be easily integrated into either powder-coated or anodised aluminium frames.



BMW Hauptverwaltung, Munich –
Glass Partition Lindner Life 137

Advantages at a glance

- Economic advantages due to ease of construction and customised product sizes
- A transparent effect provided by free-standing, flush-mounted glazing
- Integration of venetian blinds possible
- Three different bonding colours
- High sound insulation values

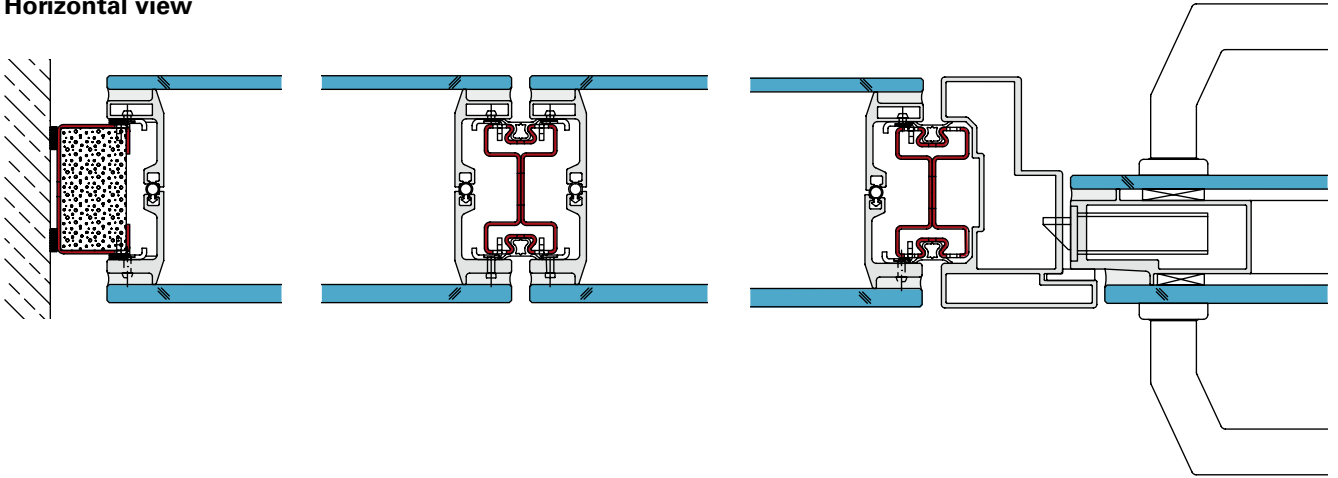






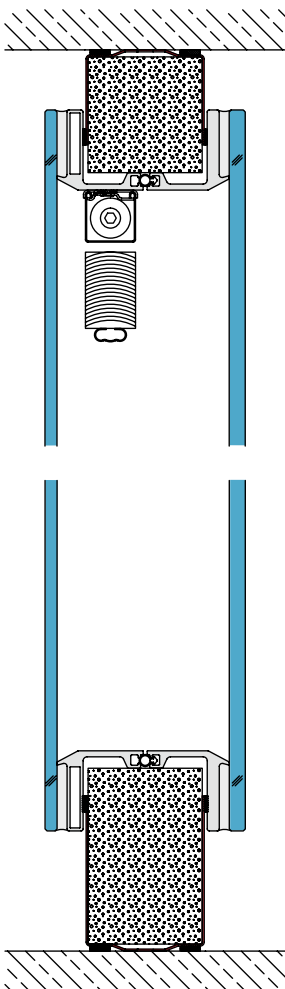
Technical information

Horizontal view



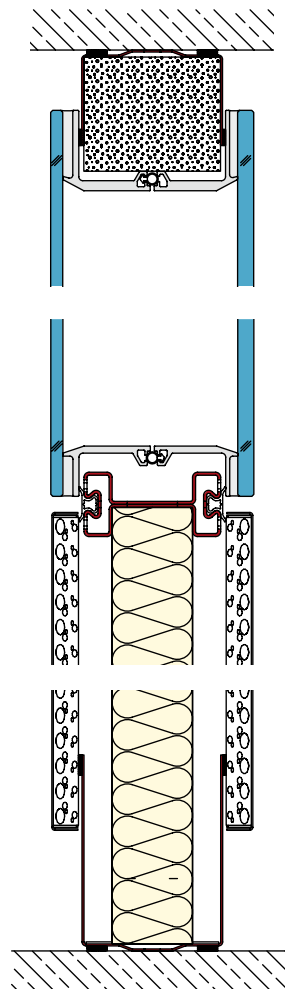
Vertical view

Glass partition with blind



Vertical view

Glass partition as fanlight glazing



Construction options	Single glazing, Double glazing 100 mm fully glazed partition 125 mm fully glazed partition
Areas of application	Office and conference rooms Industrial and factory areas Training and research facilities
Measurements	Depending on material used
Joint width	6 / 8 mm
Wall thickness	100 and 125 mm
Module width	Standard up to 1500 mm
Height	Standard up to 3500 mm (undivided 3000 mm)
Weight	At least 40 kg / m ² as fully-glazed wall, depending on requirement
Substructure	Constructed from folded or rolled steel sheet profiles, zinc coated or powder-coated
Sound insulation	100 mm wall thickness up to 50 dB R _w according to DIN EN ISO 140-03 125 mm wall thickness up to 55 dB R _w according to DIN EN ISO 140-03
Build connections	Connection accessories: A concealed hook-on system for the installation of Lindner Plus Organisation is installed over the entire system stud in the vertical shadow gap. Joint seals: Seals are installed on floor, ceiling and support profiles. Connections: Relocated floor, ceiling and wall connections
Tolerances	± 10 mm in height and width
Combineable wall panels	Metal panels with gypsum board inlay, 19 mm Wooden panels, 19 mm Acoustic elements in timber and metal
Glass	Safety glass, pane thickness depending on requirement
Visible width aluminium frame	20 / 32 mm
Fire resistance	F30 tested according to DIN 4102 EI30 tested according to EN 13501-2 EI60 tested according to EN 13501-2
Structural performance	Installation area 1 and 2 Non load-bearing partition wall tested according to DIN 4103 Fall safety, category A according to TRAV
Bonding	Type: Tented to ETAG 002 Standard for Structural Glazing Permissible temperature range: -50 °C to +150 °C Colour: light grey / white / black
Applicable standards	DIN 18202, DIN 1249, DIN EN ISO 12543

Customised, project specific solutions possible



Spreedreieck, Berlin – Glass Partition Lindner Life 137

Photo: © diephotodesigner.de



Lindner Life 620

When the architecture of a building promotes lightness and space and the function of the room requires a minimalist partition solution, glazed system Lindner Life 620 provides the answer.

With the glazing held in a perimeter frame with no need for gridwork or vertical load-bearing elements, a transparent and open room is created.

Aluminium profiles with powder coated or anodised finishes are serving as horizontal and vertical connections to the building structure.

A wide selection of glass thicknesses is available to suit your needs.

For this system we provide special doors in aluminium frame or glazed sliding doors.



Verfügungsgebäude, Ulm University –
Glass Partition Lindner Life 620

Photo: © Albrecht Imanuel Schnabel

Advantages at a glance

- Clean lines
- Transparency and openness of the room due to frameless construction
- 40 mm slim connection profiles enable incorporation of dimensional tolerances
- Integration of face – mounted acoustic elements possible
- Guaranteed high quality and stability



Swarovski, Männedorf – special construction Glass Partition Lindner Life 620
with Lindner Plus fully-glazed door leaves and Lindner Plus aluminium frames

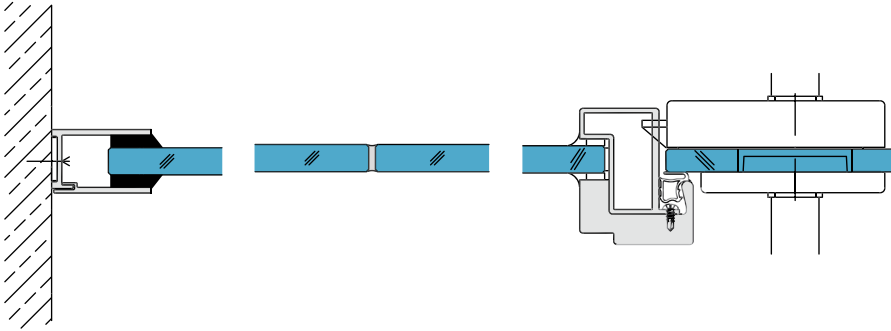
Photo: © ingenhoven architects international, Männedorf



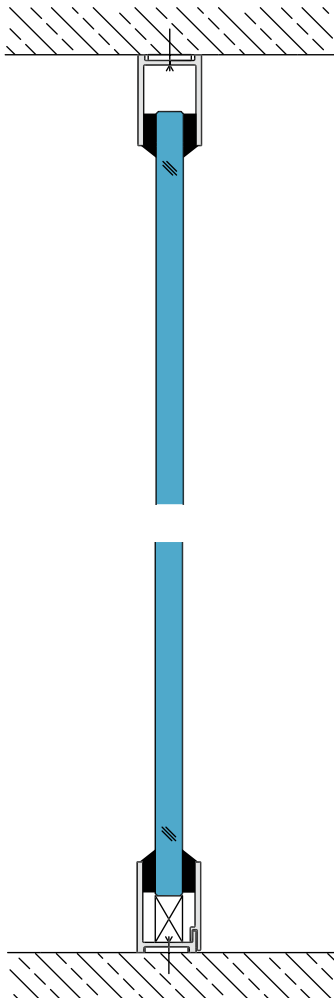


Technical information

Horizontal view

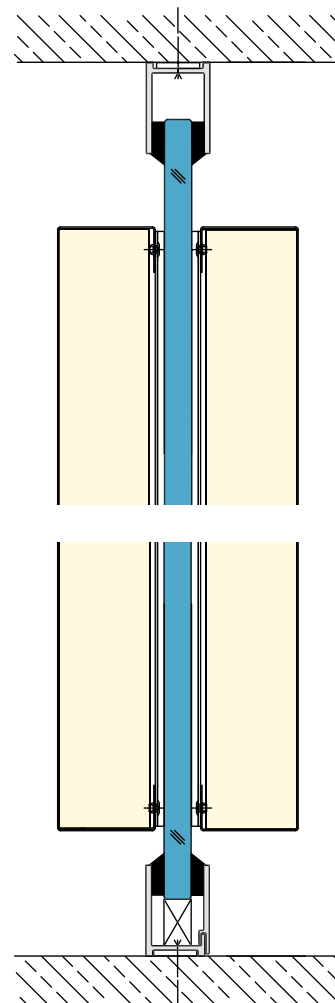


Vertical view



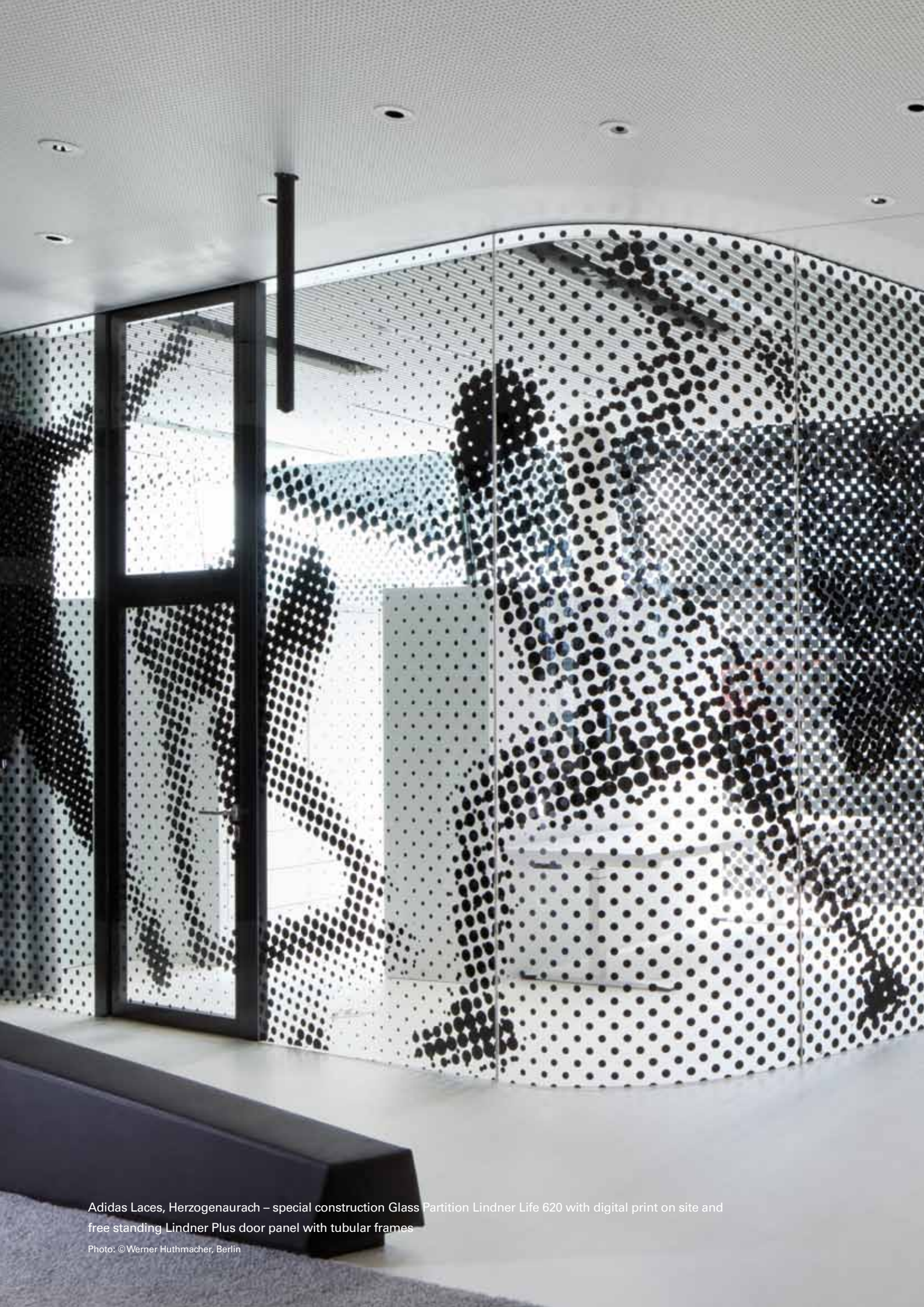
Vertical view

Glass partition with Lindner Plus acoustic elements



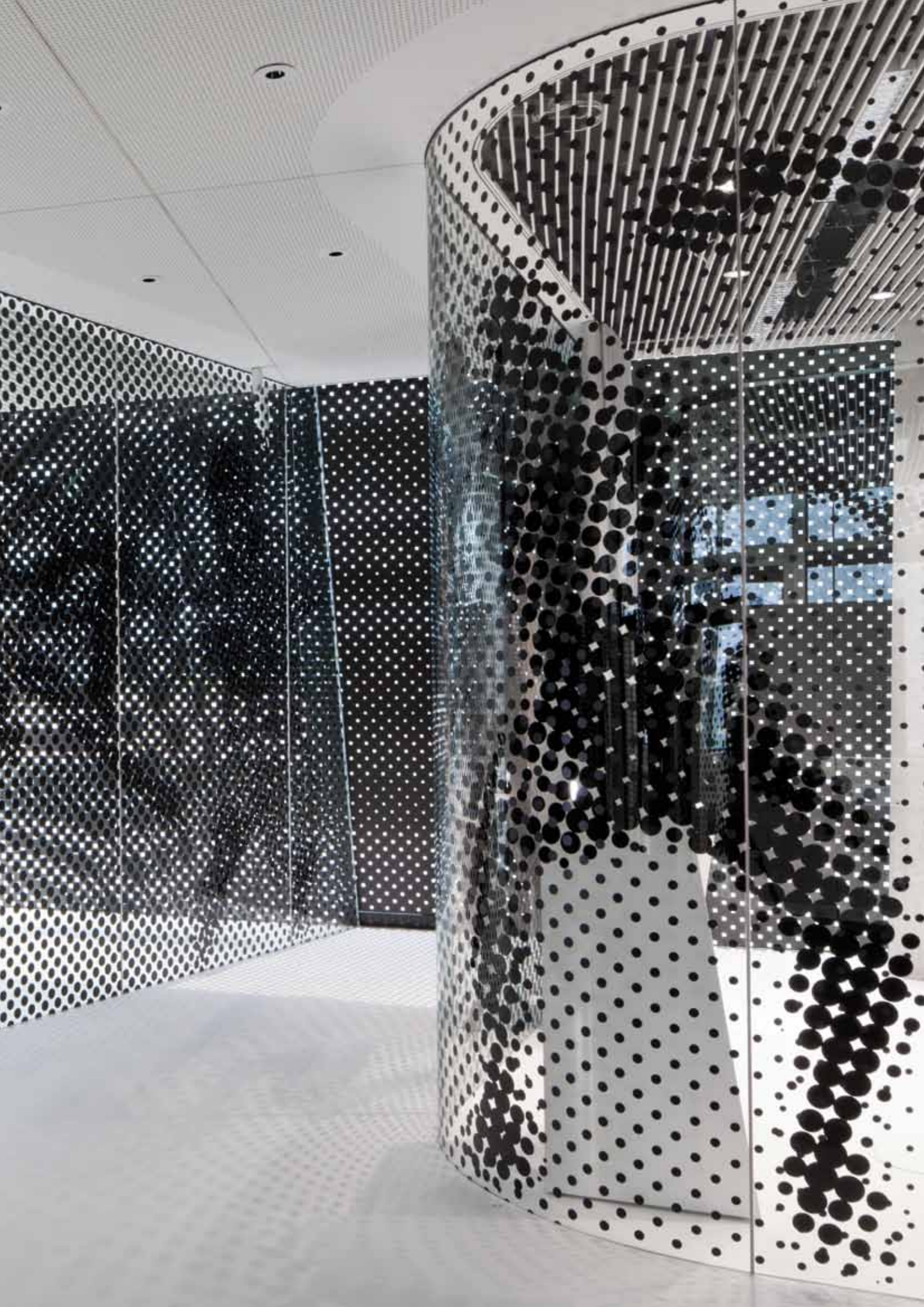
Construction options	Single glazing
Areas of application	Office and conference rooms Industrial and factory areas Training and research facilities
Measurements	Depending on material used
Joint width	Approximately 2 - 4 mm
Wall thickness	28 mm
Module width	Standard up to 1500 mm
Height	Standard up to 3500 mm depending on glass thickness
Weight	25 - 50 kg / m ² as fully glazed wall
Substructure	Aluminium profiles (glass pane)
Sound insulation	Achieves up to 42 dB R _w tested according to DIN EN ISO 140-03 Depending on panel construction
Build connections	Joints: Vertical joints are lined with silicone or transparent seals Connections: Connections with aluminium profile or silicone
Tolerances	± 10 mm in height and width
Glass	Standard 10 / 12 / 16 mm safety glass
Fire resistance	No fire resistance
Structural performance	Installation area 1 and 2 Non load-bearing partition wall tested according to DIN 4103
Applicable standards	DIN 18202, DIN 1249, DIN EN ISO 12543

Customised, project specific solutions possible



Adidas Laces, Herzogenaurach – special construction Glass Partition Lindner Life 620 with digital print on site and free standing Lindner Plus door panel with tubular frames

Photo: © Werner Huthmacher, Berlin

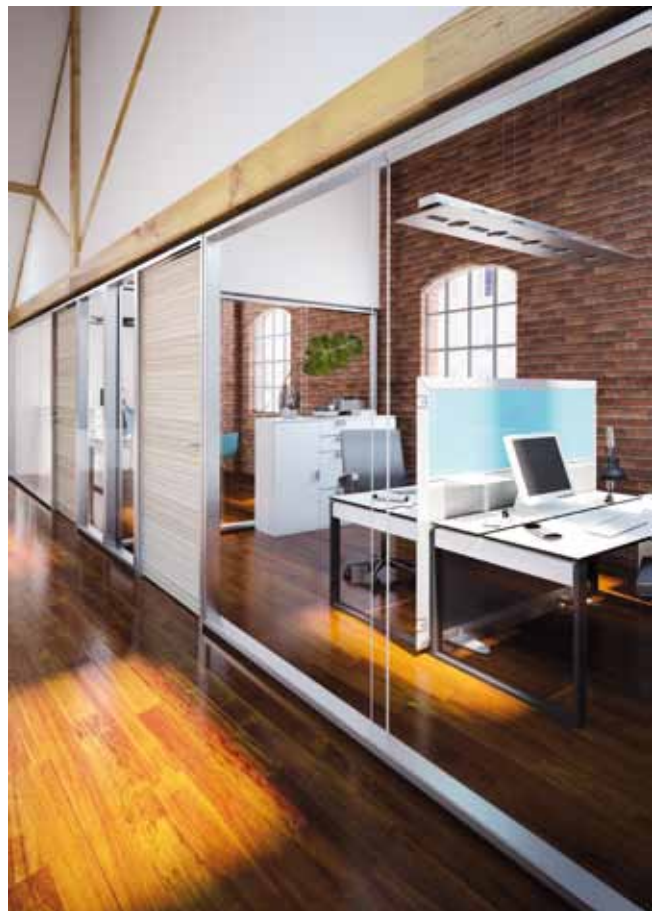


Lindner Life 622

The glass partition Lindner Life 622 is the new benchmark disclosing maximum space transparency combined with unlimited layout flexibility.

The two glass panes for the double glazed system are fixed in only 35 mm slim connecting profiles. Therefore, maximum glass visibility provides an open modern appearance. Good sound insulation and the alternative opportunity for the integration of blinds allow the implementation of an individual, delightful and undisturbed working ambience.

Either in offices, conference rooms or training facilities – Lindner Life 622 opens all possibilities to optimize design for the internal space development.



Advantages at a glance

- Transparency and open feel to the room
- Frame- and studless construction
- Commencement of construction tolerances







up to 3500 mm

up to 1250 mm

100

2

35
30



Applicable standards

DIN 18202
DIN 1249
DIN EN ISO 12543

Structural performances
(nach DIN 4103)

Installation area I
Installation area II

Weight



50-60 kg/m²

Sound insulation
(acc. to DIN EN ISO 140-03)



up to 47 dB



Lindner Life Individual



Chamber of commerce, Bolzano – Glass partition with integrated profiles into the floor and ceiling.

Photo: © www.meraner-hauser.com

Invisible connecting profiles – Lindner Life Individual

To reach the maximum of glazed surfaces we have set all connecting profiles into the floor, ceiling and walls for this project. We installed a post cap ceiling especially developed for this project.

Your requirements are our challenge!



Photo: © www.meraner-hauser.com

Natural building materials – Lindner Life Individual

Wood as renewable material is easy to process.

Solid glazing meets several requirements:

- Transparency due to the use of glass
- Use of natural building material
- Structural-physical certificates regarding sound insulation, fire protection and statics

We assure to find solutions for your individual demands.



Karolinen Karree, München – Solid glazing

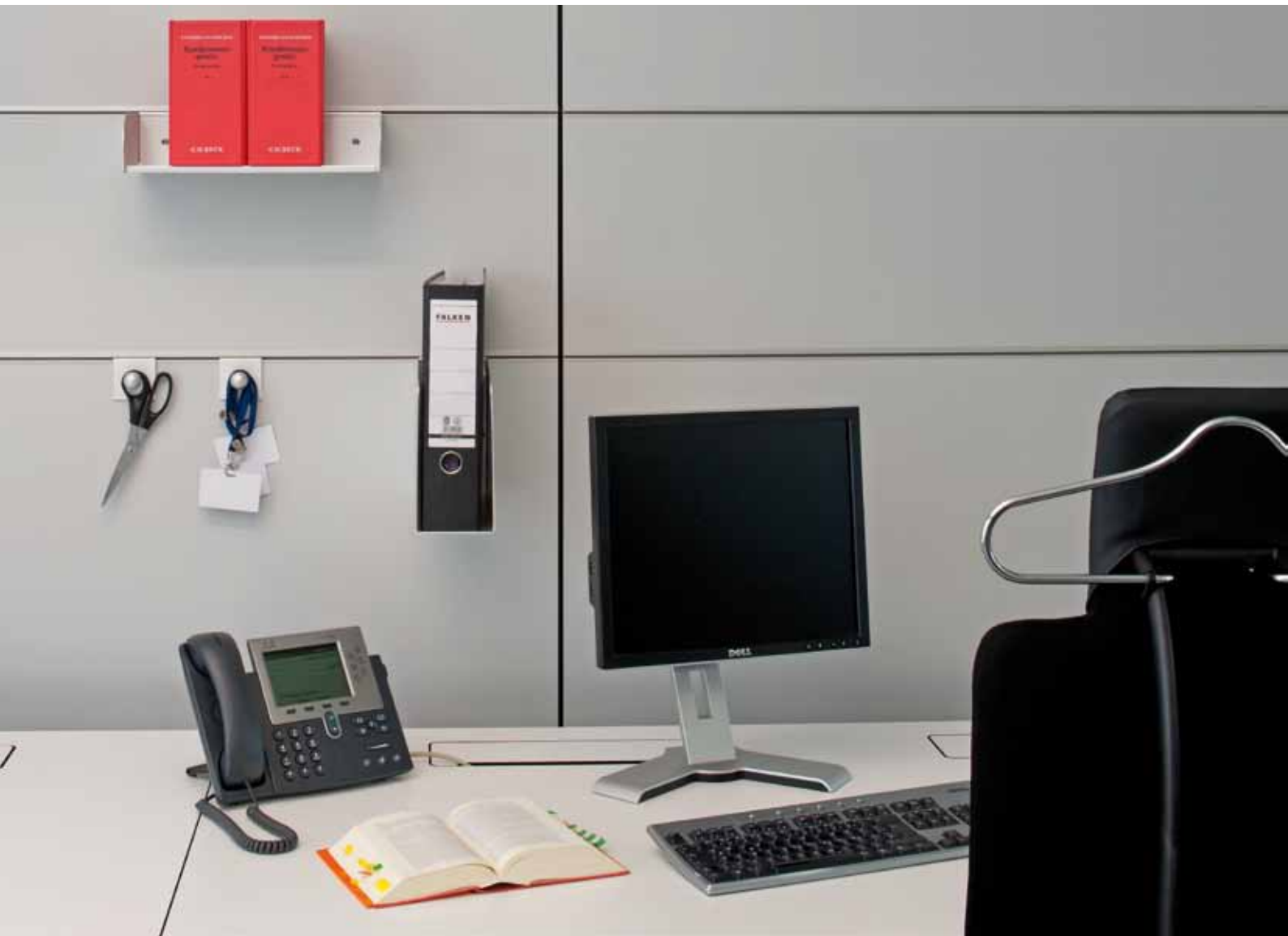


Oberstufenzentrum, Berlin – Solid glazing

© ReimarHerbst.Architekten

Integrate!

Our partition systems are combinable with our accessories of the first-class Lindner Plus range in order to optimize the finished effect. Additionally, with our project specific solutions a variety of combinations is available.



The Squaire, Frankfurt – Lindner Plus Organisation

Lindner Plus for Partition Systems

- Acoustic panels
- Organisation
- Blinds
- Installation units
- Facade connections
- Overflow elements
- Electrification
- Green Office
- Glazed door panels with tubular frame
- Fully glazed door panels
- Wooden door panels
- Sliding doors
- Recessed doors
- Fire resistant doors
- Doors with high sound insulation values
- Various types of frames

We can do it all for you.

Lindner Concepts:

- Airports and Railways
- Clean Rooms and Operating Theatres
- Cruise Liner and Ship Fit-out
- General Contracting
- Hotels and Resorts
- Insulation and Industrial Service
- Interior Fit-out and Furnishings
- Special-Purpose Constructions and Stadiums
- Studios and Concert Halls
- System Buildings

Lindner Products:

- Ceiling Systems
- Doors
- Dry Lining Systems
- Facades
- Floor Systems
- Heating and Cooling Technologies
- Lights and Lighting Systems
- Partition Systems
- Roofing Systems
- Steel & Glass

Lindner Service:

- Clearance of Harmful Substances
- Construction Management and Project Development
- Deconstruction and Interior Demolition
- General Planning
- Global Product Supplies
- Green Building
- Industrial Scaffolding
- Installation and Building Services
- Research and Development

Lindner Group

Bahnhofstrasse 29
 94424 Arnstorf
 Germany
 Phone +49 (0)8723/20-36 81
 Fax +49 (0)8723/20-25 47
partitionsystems@Lindner-Group.com
www.Lindner-Group.com