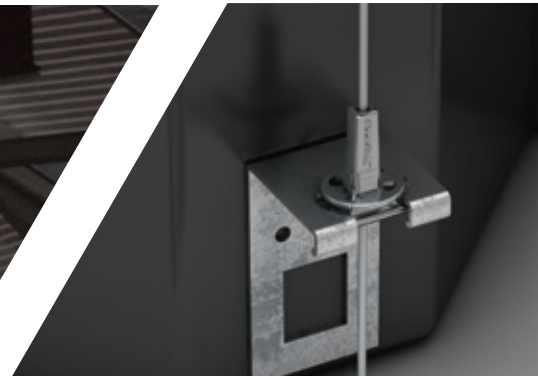


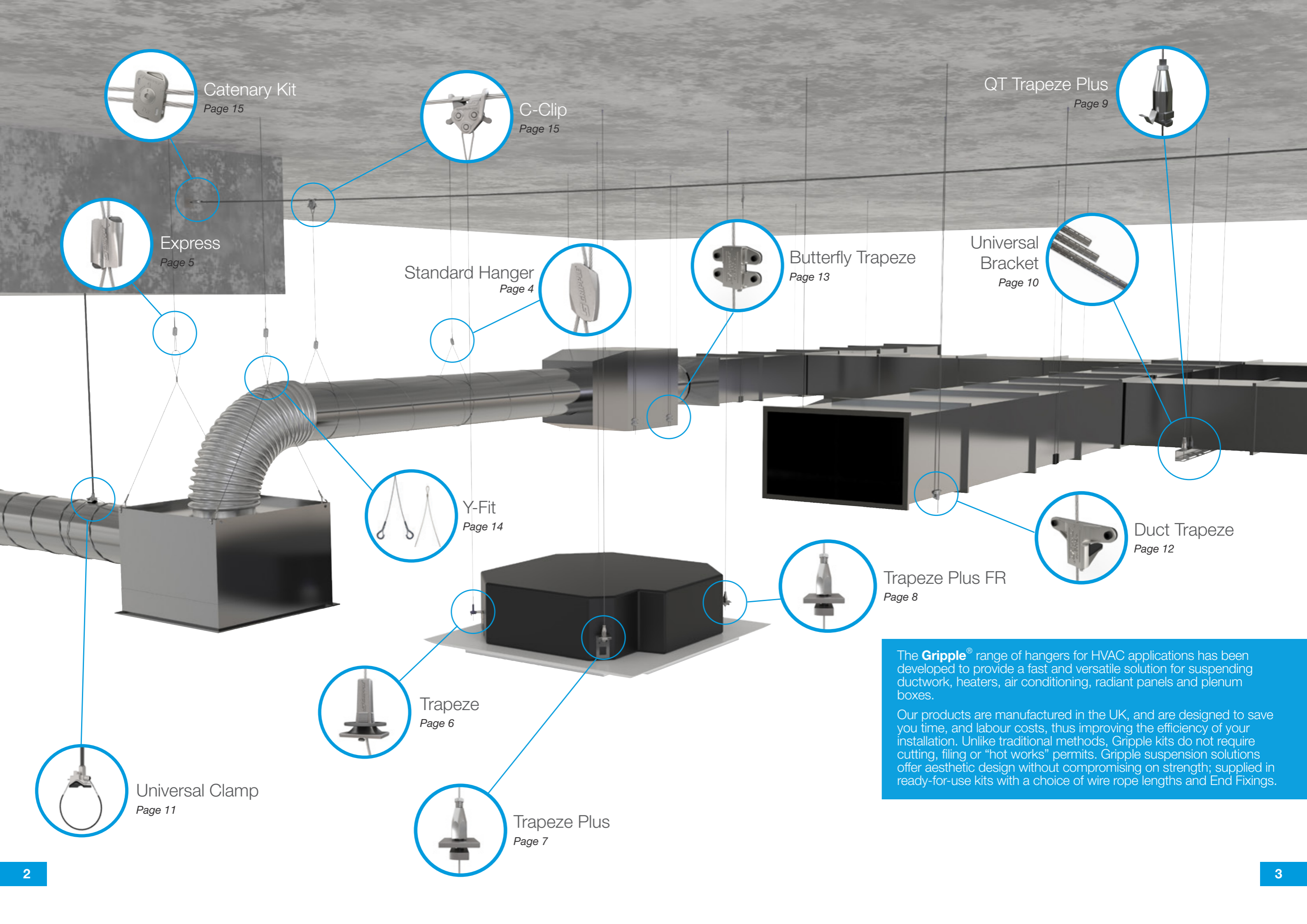


# HVAC Solutions

For the comprehensive suspension of HVAC services



- Ready-to-use solutions
- Easy and efficient installation
- Versatile configurations



Catenary Kit  
Page 15

C-Clip  
Page 15

QT Trapeze Plus  
Page 9

Express  
Page 5

Standard Hanger  
Page 4

Butterfly Trapeze  
Page 13

Universal  
Bracket  
Page 10

Y-Fit  
Page 14

Trapeze Plus FR  
Page 8

Duct Trapeze  
Page 12

Trapeze  
Page 6

Universal Clamp  
Page 11

Trapeze Plus  
Page 7

The **Gripple**<sup>®</sup> range of hangers for HVAC applications has been developed to provide a fast and versatile solution for suspending ductwork, heaters, air conditioning, radiant panels and plenum boxes.

Our products are manufactured in the UK, and are designed to save you time, and labour costs, thus improving the efficiency of your installation. Unlike traditional methods, Gripple kits do not require cutting, filing or "hot works" permits. Gripple suspension solutions offer aesthetic design without compromising on strength; supplied in ready-for-use kits with a choice of wire rope lengths and End Fixings.



# Standard Hanger

The Standard Hanger presents an ideal solution to fulfil a variety of HVAC suspension requirements

- **Quick** – fewer components compared to traditional methods, up to six times faster to install than traditional suspension systems
- **Safe** – no tools or “Hot Works” permit required for installation, improving health and safety on-site
- **Strong** – industry approved, conforms to DW144
- **Lightweight** – easy to move and handle on-site, whilst reducing the load on the building structure



Hangers are supplied as ready-to-use kits with a length of wire rope and end fixing of your choice.

### Available Sizes

No. 1  
10 kg



No. 2  
45 kg



No. 3  
90 kg



No. 4  
225 kg



No. 5  
325 kg



#### End Fixings - Page 17

A wide selection of End Fixing options to suit your application requirements

#### Product Codes - Page 20

Standard product codes for ordering Kits and Wire Rope Hangers

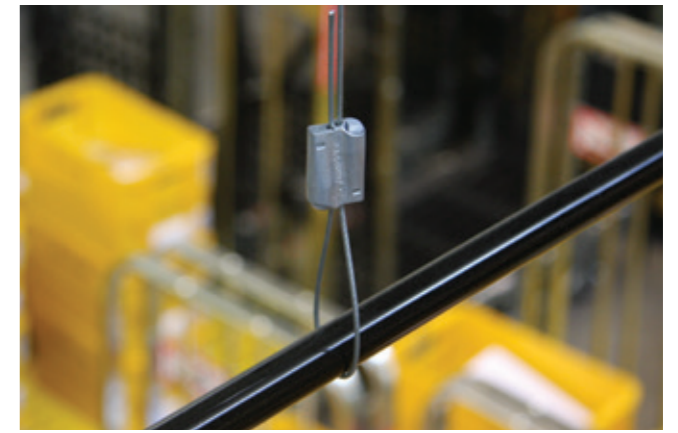
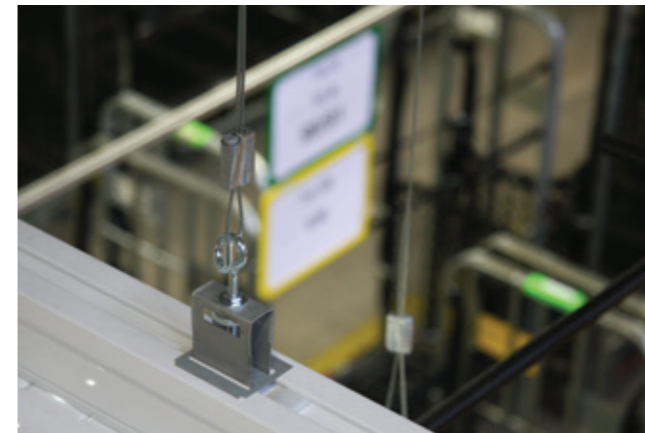
#### Sales Enquiries

Call our friendly team on 0800 018 4264

# Express

Tool free suspension kit designed with a keyless release mechanism for fast suspension of a variety of HVAC applications

- **Versatile** – Express No. 1 is ideal for lightweight ductwork. Express No. 2 is ideal for heavy duty ductwork
- **Quick** – ergonomic buttons allow for rapid adjustment, no Setting Key required
- **Safe** – no tools or “Hot Works” permit required for installation, improving health and safety on-site
- **Aesthetic** – the design complements enclosed and open soffit space
- **Lightweight** – easy to move and handle on-site, whilst reducing the load on the building structure



Hangers are supplied as ready-to-use kits with a length of wire rope and end fixing of your choice.

### Available Sizes

Express No. 1  
10 kg



Express No. 2  
45 kg



#### Installation Design Service

Submit your drawings and our technical team will provide bespoke product specification based on your project requirements. See page 16 for more information.

# Trapeze

Ideal for fast suspension of ductwork, air conditioning cassettes and chilled beams

- **Simple** – tapered design accommodates all slot sizes for fast and easy installation into channel reducing time spent working at height
- **Quick** - adjustment pin allows for rapid adjustment, no Setting Key required
- **Strong** – industry approved. Available up to 225 kg with 5:1 SWL
- **Versatile** – variety of different End Fixings for attachment to a wide range of substrates
- **Safe** – supplied in ready-to-use kits comprising of a length of wire, pre-crimped End Fixing and Gripper Hanger. No tools or “Hot Works” permit required for installation, improving health and safety on-site



All hangers are supplied as ready-to-use kits with a length of wire rope and end fixing of your choice.

## Available Sizes

No. 2  
45 kg



No. 3  
90 kg



No. 4  
225 kg



### End Fixings - Page 17

A wide selection of End Fixing options to suit your application requirements

### Product Codes - Page 20

Standard product codes for ordering Kits and Wire Rope Hangers

### Sales Enquiries

Call our friendly team on 0800 018 4264

# Trapeze Plus



Designed for single and multi-tier suspension of a variety of HVAC applications

- **Simple** – Designed for single and multi-tier suspension of a variety of HVAC applications
- **Quick** – integral adjustment button allows for rapid adjustment, no Setting Key required
- **Secure** – locking screw prevents movement of services once positioned
- **Strong** – industry approved. Available up to 225 kg SWL with a 3:1 safety factor
- **Safe** – no tools or “Hot Works” permit required for installation, improving health and safety on-site



All hangers are supplied as ready-to-use kits with a length of wire rope and end fixing of your choice.

## Available Sizes

No. 2  
45 kg Central & Side Exit



No. 3  
90 kg Central & Side Exit



No. 4  
225 kg Central Exit



### Installation Design Service

Submit your drawings and our technical team will provide bespoke product specification based on your project requirements. See page 16 for more information.



# Trapeze Plus FR

Designed for quick attachment to channel for the fast suspension of a variety of HVAC applications

- **Fire rated** – supplied with stainless steel wire. BRE tested to F120 to the temperatures associated with BS476 Part 20 / DIN4102 Part 2. Independent test data available with load limits and exposure times
- **Simple** – fast and easy installation using the washer or channel nut supplied to pre-install into Gripple Universal Bracket or channel reducing time spent working at height
- **Quick** – integral adjustment button allows for rapid adjustment, no Setting Key required
- **Secure** – locking screw prevents movement of services once positioned
- **Strong** – industry approved. Available up to 225 kg SWL with a 3:1 safety factor
- **Safe** – no tools or “Hot Works” permit required for installation, improving health and safety on-site



All hangers are supplied as ready-to-use kits with a length of wire rope and end fixing of your choice.

## Available Sizes

### No. 2

45 kg Central & Side Exit



### No. 3

90 kg Central & Side Exit



### No. 4

225 kg Central Exit



### End Fixings - Page 17

A wide selection of End Fixing options to suit your application requirements

### Product Codes - Page 20

Standard product codes for ordering Kits and Wire Rope Hangers

### Sales Enquiries

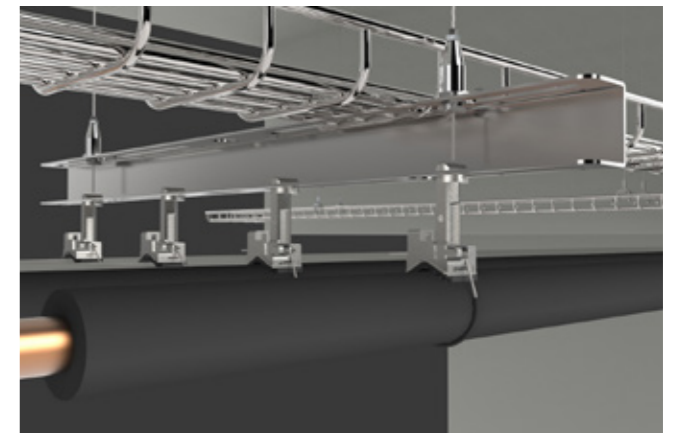
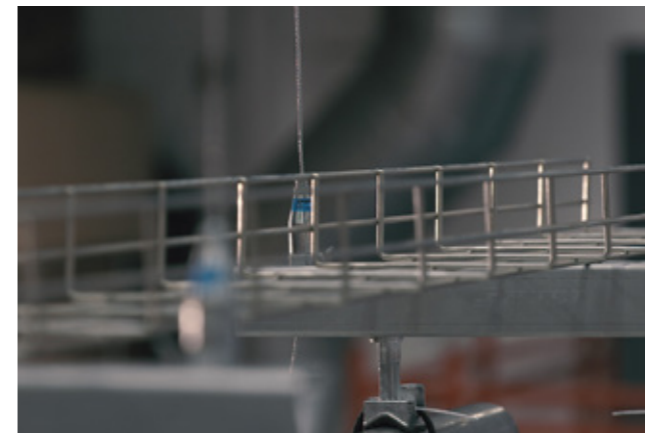
Call our friendly team on 0800 018 4264

# QT Trapeze Plus



Designed with a quick twist attachment for the Gripple Universal Bracket for fast suspension of a variety of HVAC applications

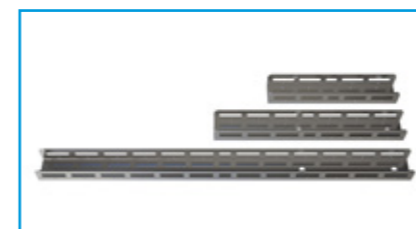
- **Simple** – fast and easy installation using the quarter turn attachment to Universal Bracket reducing time spent working at height
- **Quick** – integral adjustment button allows for rapid adjustment, no Setting Key required
- **Secure** – locking screw prevents movement of services once positioned. Fail safe clip with audible click install to secure into bracket
- **Strong** – up to 90 kg SWL with a 3:1 safety factor
- **Compatible** – uses standard spanner size for installation - no bespoke tools required
- **Safe** – no tools or “Hot Works” permit required for installation, improving health and safety on-site



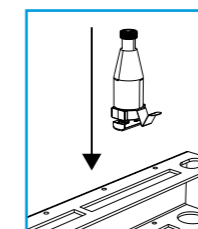
All hangers are supplied as ready-to-use kits with a length of wire rope and end fixing of your choice.

## Compatibility

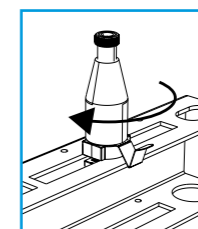
All Universal Brackets



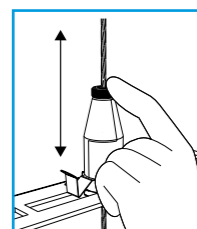
1



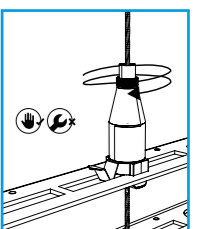
2



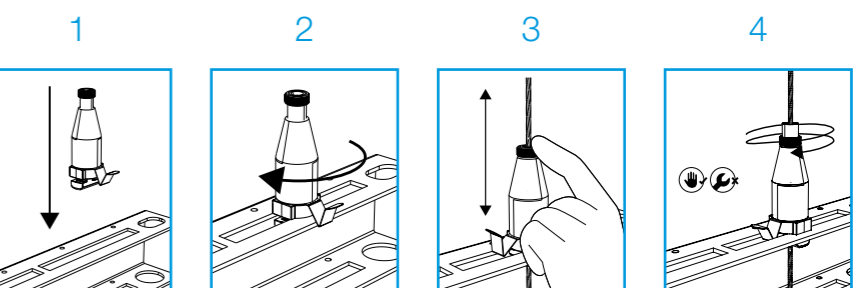
3



4



## Installation Steps



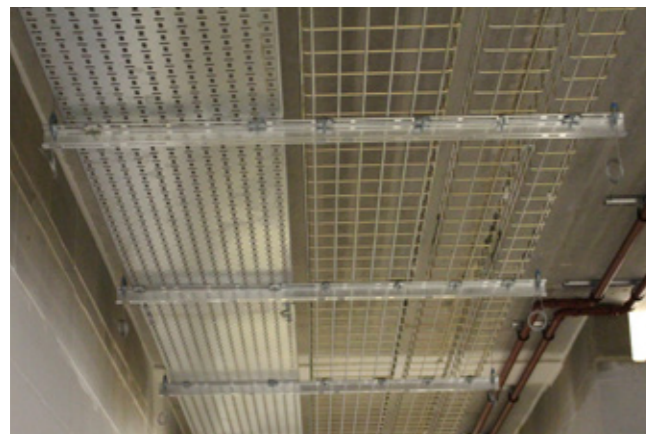
### Installation Design Service

Submit your drawings and our technical team will provide bespoke product specification based on your project requirements. See page 16 for more information.

# Universal Bracket

Universal Brackets are designed for quick and easy support of pipework and other mechanical services

- **Quick** – pre-cut lengths eliminates cutting channel on site, allowing for more productive use of labour
- **Multi-use** – two active faces allow for suspension of multiple services e.g. pipe on both faces, or pipe underneath with electrical containment or HVAC services on top
- **Versatile** – can be bolted directly to soffit or wall, or suspended from the soffit using a Gripple Hanger e.g. QT Trapeze Plus
- **Compatible** – integrates with Gripple Clamps, Trapeze Plus and Y-Fit
- **Safe** – improved health and safety as no tools or “Hot Works” permit required for installation
- **Strong** – 150 kg load rating in sizes ranging from 240 mm to 1240 mm and fire tested by BRE



## Size Variants

240 mm	340 mm	640 mm	1040 mm	1240 mm	Bespoke lengths available on request
--------	--------	--------	---------	---------	--------------------------------------

### End Fixings - Page 17

A wide selection of End Fixing options to suit your application requirements

### Product Codes - Page 20

Standard product codes for ordering Kits and Wire Rope Hangers

### Sales Enquiries

Call our friendly team on 0800 018 4264

# Universal Clamp

The Universal Clamp is ideal for the quick suspension of spiral ductwork or A/C pipework

- **Universal** - for 80 to 315 mm spiral ductwork
- **Strong** – 75 kg SWL with a 3:1 safety factor
- **Versatile** - for pipe sizes 15mm copper to 6” steel
- **Anti-vibration** - rubber pad and nylon sleeve provide insulation against vibration and reduces noise
- **Flexible** – ideal for multiple or single pipe runs, using threaded rod or M8 loop adaptor



## Pad Variants

Standard	Large	Acoustic
<ul style="list-style-type: none"> <li>• Rubber pad for insulation purposes</li> <li>• 16 dBa reduction.</li> </ul>	<ul style="list-style-type: none"> <li>• Improved fit for large dia. pipe</li> <li>• Most suitable for 3” and above</li> <li>• 16 dBa reduction.</li> </ul>	<ul style="list-style-type: none"> <li>• Designed to reduce noise related to water pressure.</li> <li>• 23 dBa reduction.</li> </ul>

### Installation Design Service

Submit your drawings and our technical team will provide bespoke product specification based on your project requirements. See page 16 for more information.



# Duct Trapeze

Ideal for single and multi-tiered suspension of rectangular ductwork

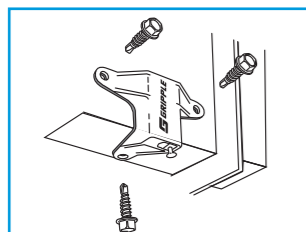
- **Simple** – can be installed directly to the ductwork at ground level, eliminating the need for channel
- **Quick** – adjustment pin allows for rapid adjustment, no Setting Key required
- **High performance** - rubber pad prevents air leakage and dampens vibration
- **Strong** – industry approved, conforms to DW144 Class D. Available up to 45 kg with 5:1 SWL
- **Compatible** – suitable for ducting made from 0.6 – 1.5 mm gauge steel
- **Safe** – supplied as ready-to-use kit, with choice of wire length, End Fixing and Duct Trapeze. No tools or “Hot Works” permit required for installation, improving health and safety on-site



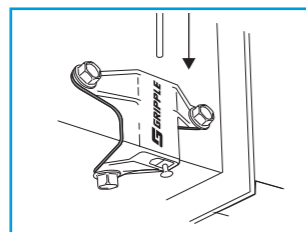
All hangers are supplied as ready-to-use kits with a length of wire rope and end fixing of your choice.

## Installation Steps

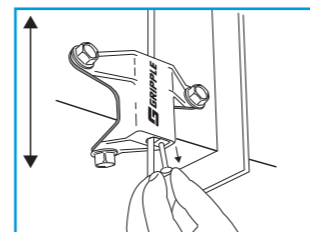
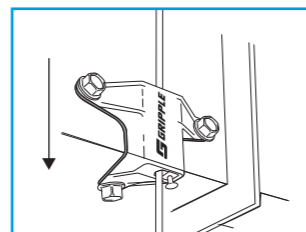
1



2



3



## Release

### End Fixings - Page 17

A wide selection of End Fixing options to suit your application requirements

### Product Codes - Page 20

Standard product codes for ordering Kits and Wire Rope Hangers

### Sales Enquiries

Call our friendly team on 0800 018 4264

# Butterfly Trapeze

Ideal for single and multi-tiered suspension of rectangular ductwork and plenum boxes

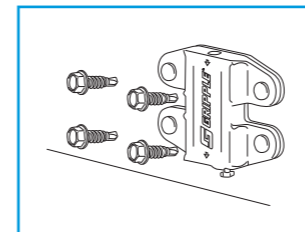
- **Simple** – can be installed directly to the ductwork at ground level, eliminating the need for channel
- **Quick** – adjustment pin allows for rapid adjustment, no Setting Key required
- **High performance** - rubber pad prevents air leakage and dampens vibration
- **Strong** – industry approved, conforms to DW144 Class D. Available up to 45 kg with 5:1 SWL
- **Compatible** – suitable for ducting made from 0.6 – 1.5 mm gauge steel
- **Safe** – supplied as ready-to-use kit, with choice of wire length, End Fixing and Butterfly Trapeze. No tools or “Hot Works” permit required for installation, improving health and safety on-site



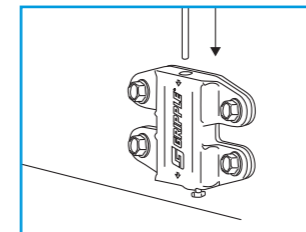
All hangers are supplied as ready-to-use kits with a length of wire rope and end fixing of your choice.

## Installation Steps

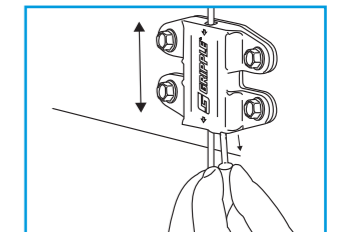
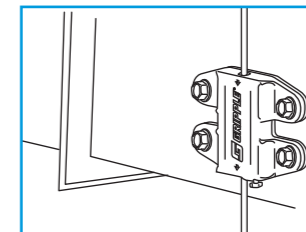
1



2



3



## Release

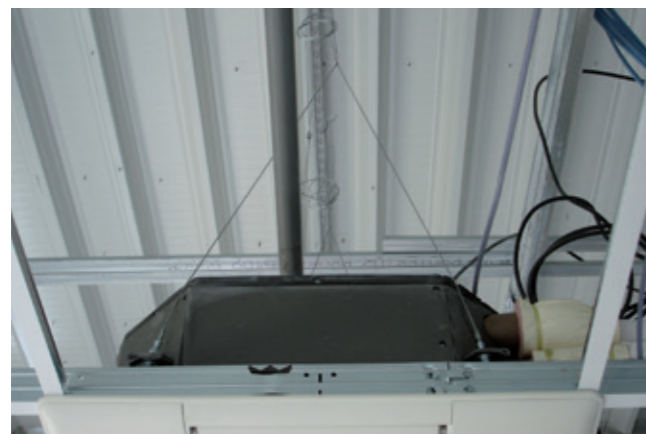
### Installation Design Service

Submit your drawings and our technical team will provide bespoke product specification based on your project requirements. See page 16 for more information.

# Y-Fit and Y-Fit Accessory

Ideal for balanced installation of penulm boxes, grills or A/C pipework trays

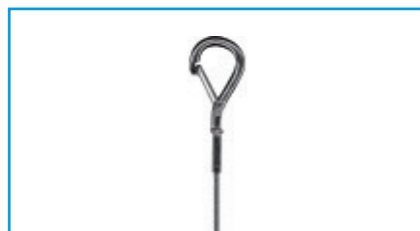
- **Simple** – single point suspension with double hanging points
- **Versatile** – variety of different End Fixings including Snap Hook, Cable Tray Hook, Toggle and Karabiner for attachment to a wide range of services
- **Quick and easy installation** – accessory version is ideal for longer drops to easily reach to services for adjustment
- **Safe** – supplied in ready-to-use kits comprising of a length of wire, pre-crimped End Fixing and Grippler Hanger. No tools or “Hot Works” permit required for installation, improving health and safety on-site
- **Strong** – industry approved. Available up to 90 kg with 5:1 SWL



All hangers are supplied as ready-to-use kits with a length of wire rope and end fixing of your choice.

## End Fixings

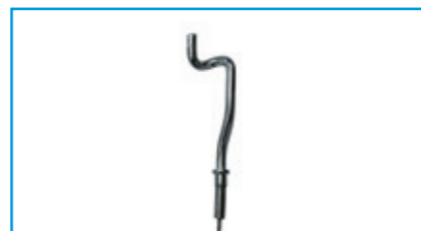
Snap Hook



Toggle



Cable Tray Hook



### End Fixings - Page 17

A wide selection of End Fixing options to suit your application requirements

### Product Codes - Page 20

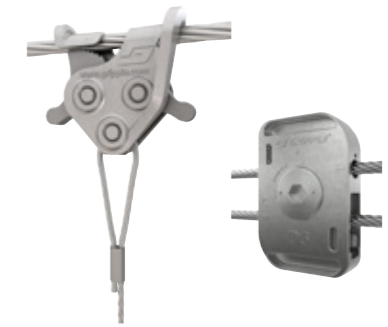
Standard product codes for ordering Kits and Wire Rope Hangers

### Sales Enquiries

Call our friendly team on 0800 018 4264

# Catenary Kit & C-Clip

Create secure, overhead spans by running high strength wire rope between two fixing points. Ideal for applications where no direct vertical anchor point is available



- **Quick** – fewer components compared to traditional methods, up to six times faster to install than traditional suspension systems
- **Aesthetic** – the design complements enclosed and open soffit spaces providing a discreet finish compared to rod and channel installation
- **Safe** – supplied in ready-to-use kits comprising of a length of wire, Lockable Plus, hex locking key and release key. No “Hot Works” permit required for installation, improving health and safety on-site
- **Strong** – industry approved. Available up to 100 kg vertical load, with Catenary Tension Analysis and installation design service available on request
- **Secure** – locking mechanism in the Lockable Plus prevents dynamic movements
- **Lightweight** – easy to move and handle on-site, whilst reducing the load on the building structure.
- The light duty 3 mm version is ideal for suspending lightweight electrical containment, ductwork and signage - up to 30 kg per free span.
- The heavy duty 6 mm version is perfect for suspending M&E or HVAC services, or where a long catenary is required - up to 100 kg per free span



All hangers are supplied as ready-to-use kits with a length of wire rope and end fixing of your choice.

## Available Sizes

D3

3 mm C-Clip with 3 mm wire



D6

3 mm C-Clip with 6 mm wire



## Use with

C-Clip



Tensioning Tool



### Installation Design Service

Submit your drawings and our technical team will provide bespoke product specification based on your project requirements. See page 16 for more information.



# Trapeze Plus Calibra



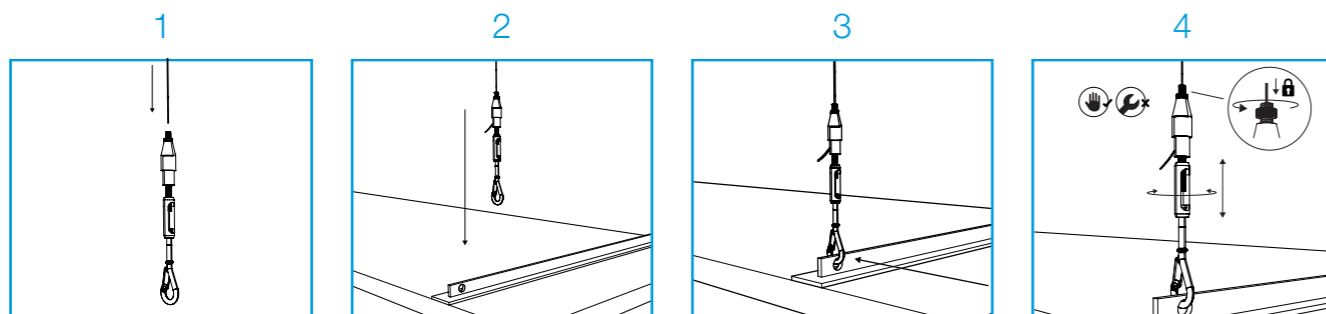
Engineered to allow adjustment of heating/cooling panels or units under load

- **Flexible** – 50 mm of finite adjustment under load
- **Easy** – adjust by hand, even with significant load applied
- **Safe** – wire rope exits through the side of the hanger to avoid clashes with panel/units
- **Versatile** – ideal for suspending units within ceiling grids
- **Strong** – industry approved. Available up to 90 kg with 3:1 SWL



All hangers are supplied as ready-to-use kits with a length of wire rope and end fixing of your choice.

## Installation Steps



### End Fixings - Page 17

A wide selection of End Fixing options to suit your application requirements

### Product Codes - Page 20

Standard product codes for ordering Kits and Wire Rope Hangers

### Sales Enquiries

Call our friendly team on 0800 018 4264

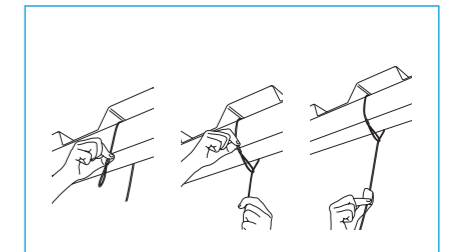
# End Fixings

All Gripple hanger kits are supplied with pre-cripped end fixings and your choice of wire rope length, suitable for installation into any substrate.



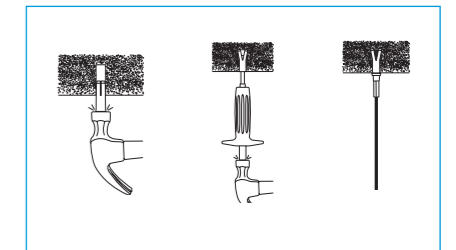
### Loop

- Ideal for looping around purlins, beams, roof trusses and other suitable building features
- Available up to 325 kg SWL, with a 5:1 safety factor
- Available in Stainless Steel



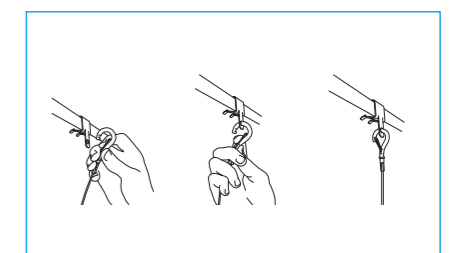
### Stud

- Ideal for anchoring into concrete ceilings and Channel Nuts
- Supplied with a Drop-in Anchor
- Available up to 225 kg SWL, with a 5:1 safety factor
- Available in Stainless Steel



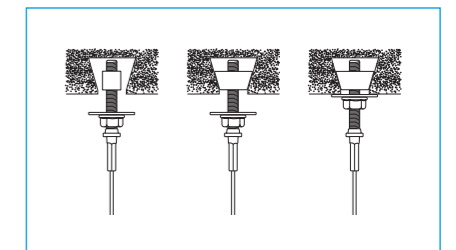
### Snap Hook

- Quick and easy attachment to cable basket, purlin clips, light fittings
- Available in Gripple sizes No.2 and No.3 up to 90 kg SWL, with a 5:1 safety factor



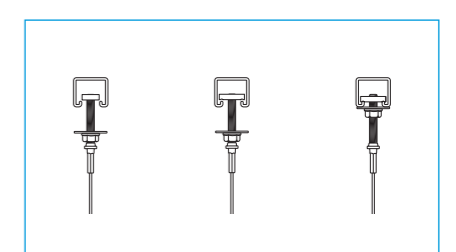
### Decking Wedge (25 mm)

- Ideal for fixing into the re-entrant channel of several composite floor deckings (R51, CF51, Holorib, MD50 and MF55)
- Available up to 90 kg SWL, with a 3:1 safety factor



### Channel Nut

- Ideal for common rail installations and multi-tier installations
- Available up to 90 kg SWL with up to a 5:1 safety factor
- Fits both 41 x 41 and 41 x 21 channel
- Pre-assembled and ready-to-insert directly into channel
- No additional components required



# Accessories

Individual Trapeze products are available separately as an accessory to allow multi-tiered installations from one suspension wire.



### Trapeze No.2

Combine Trapeze as an accessory with any Trapeze kit for multi-tiered installations. Load rating of 45 kg with a 5:1 safety factor.

**Product code:**  
TRAPEZE-NO2



### Trapeze No.3

Combine Trapeze as an accessory with any Trapeze kit for multi-tiered installations. Load rating of 90 kg with a 5:1 safety factor.

**Product code:**  
TRAPEZE-NO3



### Plenum Washer Kit

Ideal for the suspension of plenum boxes, allowing for easy adjustment. Load rating of 45kg with a 5:1 safety factor.

**Product code:**  
TZ2-PW



### Trapeze Plus No.2

Combine Trapeze Plus as an accessory with any Trapeze kit for multi-tiered installations. Load rating of 45 kg with a 3:1 safety factor.

**Product code:**  
GRIPPLE2MM-TPZ-METAL



### Trapeze Plus No.3

Combine Trapeze Plus as an accessory with any Trapeze kit for multi-tiered installations. Load rating of 90 kg with a 3:1 safety factor.

**Product code:**  
GRIPPLE3MM-TPZ-METAL



### Trapeze Plus No.4

Combine Trapeze Plus as an accessory with any Trapeze kit for multi-tiered installations. Load rating of 225 kg with a 3:1 safety factor.

**Product code:**  
GRIPPLE4MM-TPZ-METAL



### Butterfly Trapeze

Ideal for use with light ductwork. Combine Butterfly Trapeze as an accessory with any Trapeze kit for multi-tiered installations. Maximum load rating of 45 kg with a 5:1 safety factor.

**Product code:**  
GRIPPLE2MM-BFLY-TPZ



### Duct Trapeze

Ideal for use with rectangular ductwork. Combine Duct Trapeze as an accessory with any Trapeze kit for multi-tiered installations. Maximum load rating of 45 kg with a 5:1 safety factor.

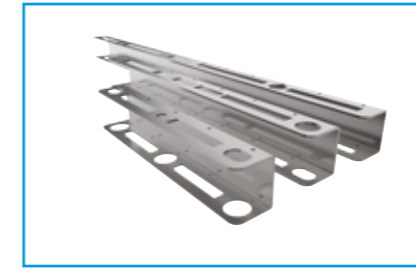
**Product code:**  
DT2-ACC-PAD



### Trapeze Bracket

Combine with Trapeze No.2 and No.3 for easy attachment to rectangular ductwork. Maximum load rating of 45 kg (No.2), 90 kg (No.3) with a 5:1 safety factor.

A variety of accessories are available to complement the product range increasing versatility and ease of installation.



### Universal Bracket

A strong lightweight solution designed to be bolted to the soffit as a header rail for suspending services using the QT End Fixing. Range of lengths available on request.



### QT Universal Clamp

Ideal for the quick and easy support of spiral ductwork. Up to 6 times faster than traditional methods.



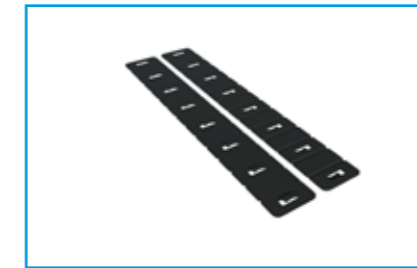
### QT Compact Clamp

Ideal for the quick and easy support of all types of pipework within mechanical and plumbing services.



### Torq Tensioning Tool

The Gripple Torq Tensioning Tool not only tensions wire but regulates the load applied too, delivering consistent results and maximising the life of your wire.



### Spreader Band

Flexible accessory for attachment to Gripple No.2 and No.3 wire, for spreading the load of various suspended services.



### Beam and Purlin Clips

Available in a variety of sizes and models for attachment to beams and purlins.



### Twister

Keeps tail wires neat and tidy. For use with 2 mm and 3 mm wire rope.



### Corner Saddle

Right-angled moulding protects against wire friction. Available in standard and magnetic versions, for easy positioning and installation.



### Wire Cutters

Purpose-made for use on up to 4 mm wire. For use when terminating wire lengths.



### Protective Sleeving

Black plastic sleeve tubing for further reducing the risk of condensation.





# Nominal Ductwork Weights

## Galvanised Steel Spirally Wound Circular Ductwork

The Gripple hanger size is based on a 2.5 m hanger spacing.

Diameter (mm)	Circumference (m)	Weight (kg/m)	Min. Gripple Hanger size
80	0.25	1.00	No. 1
100	0.32	1.56	No. 1
125	0.40	1.96	No. 1
160	0.50	2.50	No. 1
200	0.63	3.75	No. 2
250	0.80	4.69	No. 2
300	0.94	5.63	No. 2
315	1.00	5.92	No. 2
400	1.26	9.10	No. 2
500	1.57	11.50	No. 2
630	1.98	14.50	No. 2
710	2.23	16.15	No. 3
1000	3.14	28.50	No. 3
1250	3.93	45.30	No. 4

This table is an extract from DW/144 2013 edition.

## Rectangular Ducting

Size (mm)	250	500	750	1000	1250	1500	1750	2000	2250	2500	2750	3000
250	7.25	10.75	14.25	19.00	-	-	-	-	-	-	-	-
500	-	14.25	17.75	22.75	34.00	38.75	47.75	52.75	-	-	-	-
750	-	-	21.25	26.25	38.75	43.50	52.75	58.00	68.50	74.00	90.75	97.00
1000	-	-	-	30.00	43.50	48.25	58.00	63.00	74.00	79.50	97.00	103.50
1250	-	-	-	-	48.25	53.00	63.00	68.00	79.50	85.00	103.50	109.75
1500	-	-	-	-	-	57.75	68.00	73.25	85.00	90.50	109.75	116.00
1750	-	-	-	-	-	-	73.25	78.25	90.50	96.00	116.00	122.25
2000	-	-	-	-	-	-	-	83.50	96.00	101.50	122.25	128.50
2250	-	-	-	-	-	-	-	-	101.50	107.00	128.50	134.75
2500	-	-	-	-	-	-	-	-	-	112.50	134.75	141.00
2750	-	-	-	-	-	-	-	-	-	-	141.00	147.50
3000	-	-	-	-	-	-	-	-	-	-	-	153.75

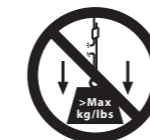
For galvanised steel spirally-wound flat oval ductwork, insulated ductwork and phenolic ductwork weights, please contact Gripple Technical Services.

# Key Recommendations

Failure to comply with these recommendations may result in product malfunction and possible damage to property or person and will invalidate the Gripple guarantee. Gripple products are guaranteed to be free from defects in materials and workmanship in accordance with our terms and conditions. No other warranty, whether express or implied, including any warranty of merchantability or fitness for purpose shall exist in connection with the sale or use of any Gripple product.

Full technical information and installation instructions should be obtained directly from Gripple Limited, Gripple Europe or Gripple Inc., any regional Gripple office, or via the website [www.gripple.com](http://www.gripple.com).

Please adhere to the following key recommendations:



### Loads

Always operate the product within its stated safe working load range.



### Lifting

Do not use for lifting, either by crane or as part of a pulley system. Suspend static loads only.



### Installation

Do not walk or stand on the Gripple product installation unless expressly designed for this purpose.



### Painting

Do not paint the hanger prior to installation. Ensure that the hanger is in its final position prior to applying any paint to the wire rope assembly. Do not move the fastener after painting.



### Lubrication

Do not apply oil or any other lubricant to the hanger or any other part of the assembly.



### Joining

Never join two ends together in-line.



### Sharp Edges

Avoid sharp edges.



### Wire Rope

Always use the fastener supplied and specified wire rope. Never use on coated wire rope or other rope. Trim any damaged filaments with the wire cutter before use.



### Environment

Do not use in chlorinated or chemically corrosive atmospheres. Standard hangers are for use in dry and air conditioned environments only. Stainless steel hangers should be considered for high to saturated humid environments after validation by a competent person. Not suitable for swimming pools.



### Impact

If there is potential for impact on the wire rope suspension or suspended services, seek advice from Gripple Ltd. Technical Services prior to installation.



### Hanging At An Angle To Vertical

Ensure that the load calculation considers the effect of 'side load'. For example, at an angle of 60° to vertical the SWL is effectively reduced by 50%



Ducting: When installing included angle teardrop hangers on round/spiral ducting or pipes, the final included angle of the assembly should not exceed 60°.



Y-Fit: Legs on Y-Fit not to be installed greater than 60°.

## Quality & Approval

Gripple UK is ISO 9001:2008 and ISO 14001 certified. Gripple products meet the highest standards of quality with lowest environmental impact.



Gripple's policy is one of continuous development and innovation. We therefore reserve the right to alter specifications, etc. without notice.



# www.gripple.com

info@gripple.com

## Gripple Ltd (Headquarters)

The Old West Gun Works,  
Savile Street East,  
Sheffield, S4 7UQ, UK

**T** | +44 (0) 800 018 4264

**F** | +44 (0) 114 275 1155

**E** | info@gripple.com

## Gripple Europe SARL

1, rue du commerce, BP 37,  
67211, Obernai Cedex, France

**T** | +33 (0)3 88 95 44 95

**F** | +33 (0)3 88 95 08 78

**E** | frinfo@gripple.com

## Gripple Benelux

1, rue du commerce, BP37,  
67211 Obernai Cedex, Frankrijk

**T** | +31 (0)70 363 34 30

**F** | +31 (0)70 362 18 44

**E** | nlinfo@gripple.com

## Gripple s.r.l

Via Ponte Pietra, 2,  
24123 Bergamo BG, Italia

**T** | +39 (0)35 300 246

**F** | +39 (0)35 424 0036

**E** | itinfo@gripple.com

## Gripple Inc

1611 Emily Lane, Aurora,  
IL 60502, USA

**T** | +1 866 474 7753

**F** | +1 800 654 0689

**E** | usinfo@gripple.com

## Gripple Portugal

Estrada Nacional 4, Km 46,5 Pontal,  
2985-201 Pegões, Portugal

**T** | +351 265 898 900

**F** | +351 265 898 879

**E** | ptinfo@gripple.com

## Gripple Industrial Ibérica, S.L.

Ctra. Logroño km 7, 3 Pol. Europa 1<sup>a</sup>  
50011 Zaragoza, España

**T** | +34 (0)97 678 32 67

**F** | +34 (0)97 678 32 68

**E** | esinfo@gripple.com

## Gripple India

B 95/2, Naraina Industrial Area,  
Phase I, New Delhi-110028

**T** | +91 11-45136817

**F** | +91 11-40582703

**E** | ininfo@gripple.com

## Gripple GmbH

Pariser Ring 1, 76532 Baden-Baden,  
Deutschland

**T** | +49 (0)700 95 44 95 11

**F** | +49 (0)700 95 08 78 11

**E** | deinfo@gripple.com

## Gripple Sp. z o.o.

Ul. Majerankowa 12,  
04-889 Warszawa, Polska

**T** | +48 (0)22 635 62 08

**F** | +48 (0)22 188 12 58

**E** | plinfo@gripple.com

WE ARE SOCIAL  
FOLLOW OUR UPDATES



For details please visit [www.gripple.com](http://www.gripple.com) or  
call our Technical Team on 0800 018 4264

