

Concepts

Products

Service



The basis for individual projects.

Lindner flooring systems make any construction possible.



Lindner

Building New Solutions

Building new solutions.

Lindner undertakes major projects worldwide in all areas of interior fit-out, insulation technology, industrial services and building facades. From pre-planning through to project completion Lindner is your partner of choice.

The Company's extensive manufacturing capability enables quality to be strictly maintained whilst allowing maximum flexibility to meet individual project requirements.

Environmental considerations are fundamental to all Lindner's business principles.

Through partnerships with clients Lindner turns concepts into reality.

Choosing Lindner you have:

Lindner Concepts:
Tailored solutions specifically geared to satisfy individual project requirements

Lindner Products:
Quality materials and systems to the very highest industry standards

Lindner Service:
Comprehensive project management services

Something to build on.

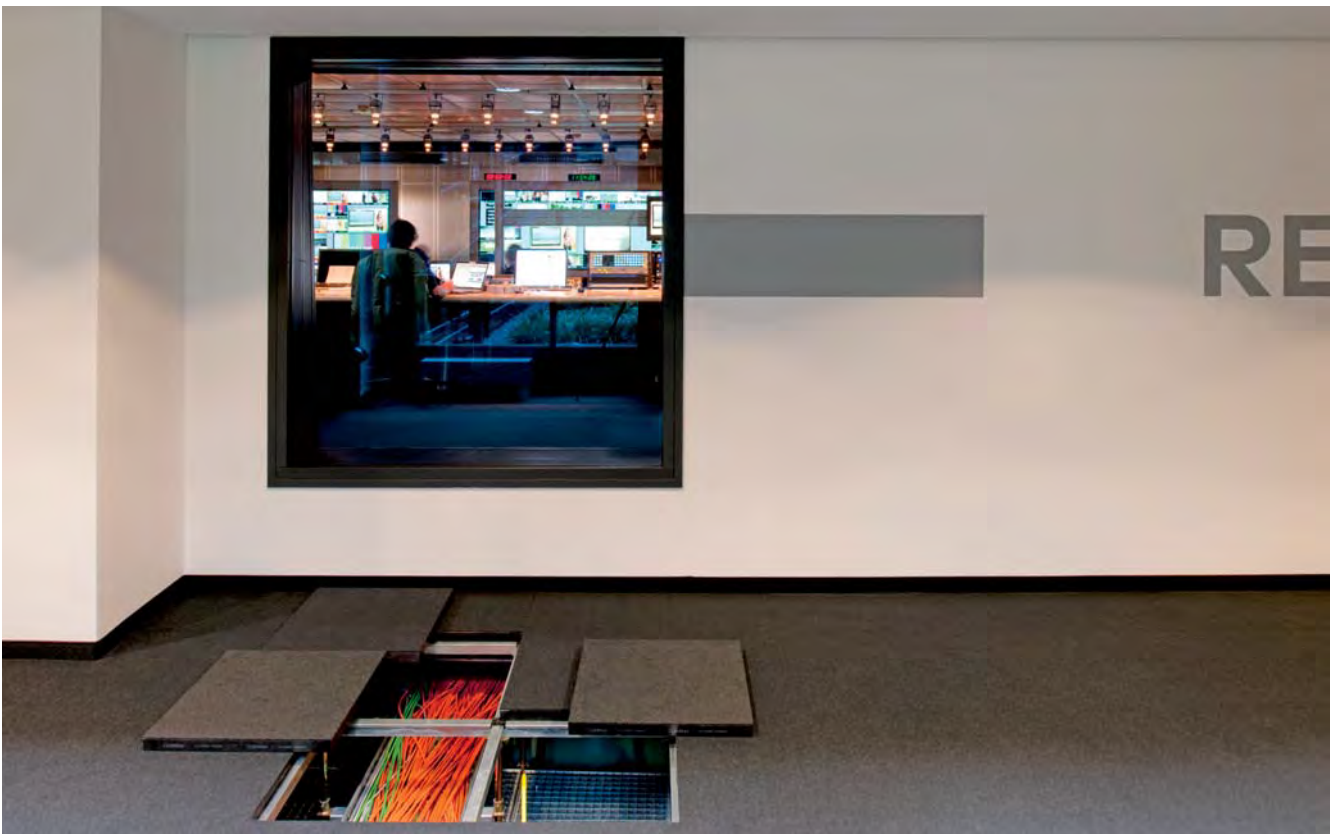
Your foundation for the highest
quality and the widest variety.

Lindner – flooring systems from the market leader:

- Quick to install
- Variety of combinations
- High ecological standards
- Tailor-made options
- All services from one source, from production to maintenance

Tread the boards: Lindner Flooring Systems.

Lindner has a long tradition of manufacturing floor systems. You will benefit from our many years of experience, innovative products and a unique product portfolio.



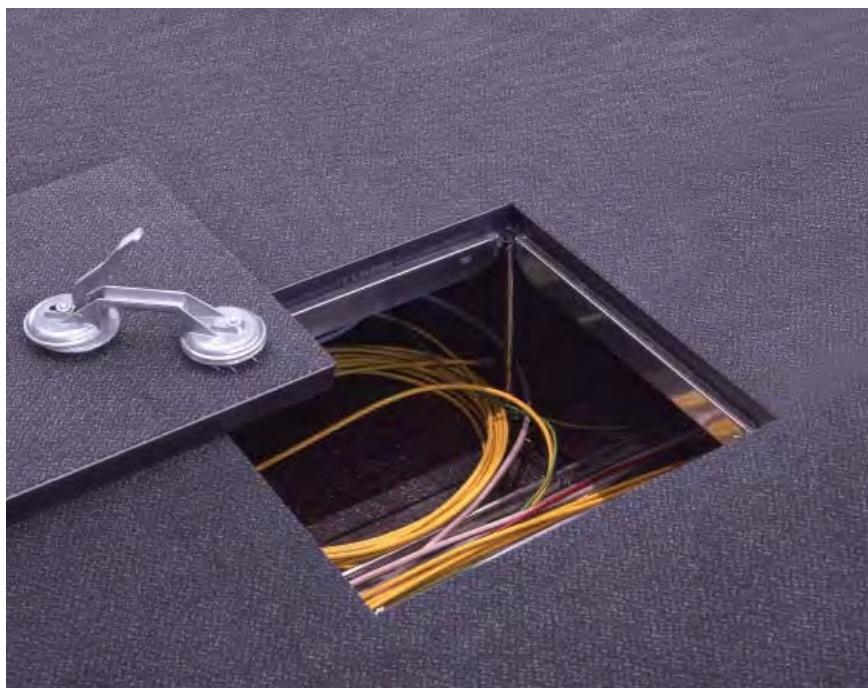
RTL, Cologne

Design and function, tailored to meet your specific requirements.

Each project has specific functional and aesthetic requirements, which is why we treat each project individually – tailored to meet your needs. As specialists in all areas of interior fit-out, we provide all our services from one source, either individually or as a tailor-made process – from general planning, delivery and installation through to maintenance and building management.

The highest quality and the widest variety. Floors from the market leader.

In comparison to our international competitors, we offer the most extensive range as well as the best product quality. So it doesn't come as a surprise to hear that we are the market leader in the flooring systems sector. One of our key features is that we make our own high-quality calcium sulphate panels in our own factory. You can find out more about this on the following pages.



Aircraft cabin fit-out, Laupheim

Bring the latest trends to your rooms: Lindner raised floors.

Do you want building, computing and communications technology to be easily accessible? Raised floors provide the ideal conditions to do this. The panels are installed without the need for screeding, thus enabling access to the cavity at any given point, guaranteeing ease of maintenance. Raised floors also provide an added extra in flexibility – they can be adapted quickly and easily to meet new demands.

Advantages of raised floors:

- Computing, building and communications technology can be laid within the floor void
- Easy maintenance of data cables and building technology
- Can be easily adapted to meet new requirements
- The most modern interior fit-out solution for offices



Lindner: Production with responsibility.

Our own production guarantees premium quality and quick response times – and also ensures that all processes are environmentally friendly.

As we manufacture flooring systems at different sites all over the world, responsible dealings with people and with the environment is very important to us. Our integrated quality management process ensures a high level of occupational safety and comprehensive environmental protection.

Our integrated management system – the safest way to success.

All areas of operation coordinate perfectly with each other at Lindner. This ensures that Lindner always provides you with particularly effective processes. Our integrated management system is certified to EN ISO 9001.

Additionally we comply with EN ISO 14001 and SCC – for a healthy environment and optimal safety. We are constantly developing our systems to meet our customers' specific requirements and to further improve our products' environmental compatibility.

A healthy environment is one of our biggest concerns.

Environmental protection is one of our company's fundamental aims. For this reason, we only use tested and approved materials. In addition to this we are consistently reducing emissions and energy consumption. To ensure maximum efficiency on site we work on each project individually – targeted environmental management that makes sense economically.



A quality product made from recycled materials.

Even when developing our products we are thinking about the environment. Take our calcium sulphate raised floor panels for example. They consist of 99% recycled materials and are one of our top quality products – featuring excellent acoustics and structural performance properties.



An important ingredient of our calcium sulphate panels are cellulose fibres which we obtain from recycled paper.



The cellulose is mixed with gypsum.



The result is high quality calcium sulphate panels which we export all over the world.

A reason to breathe.



Unilever, Hamburg

We only use environmentally friendly building materials free from pollutants and solvents. Tested to international standards, all components exhibit low emission values. This goes for panels as well as for components such as adhesives and floor coverings. Relevant environmental data on Lindner floor systems has been summarized in Environmental Product Declarations (EPD) according to ISO 14021.



We are a founder member of the German Sustainable Building Council (DGNB).



We are a member of the U.S. Green Building Council.

Create a healthy working environment.

Our floor coverings are factory-bonded, eliminating the need for on-site treatment and reducing any potential health risk.

Savour comfort when walking. Lindner NORTEC.

Are you looking for a state-of-the-art product with outstanding properties? Then NORTEC is perfect for you.



NORTEC raised floor panels provide you with the highest level of comfort when walking. The system consists of calcium sulphate (gypsum fibre) – a material with excellent structural performance properties.

The best quality for your rooms:

- First class comfort when walking
- Extreme stability
- The highest performance characteristics
- Top quality finished panel

So much fire proofing puts a world of safety at your feet.

Calcium sulphate is non-flammable. Therefore NORTEC provides you with increased fire protection. In addition, the product provides first class sound proofing.

Really superior.

The Institute of Building Biology in Rosenheim recommends NORTEC. Tests confirm that our calcium sulphate panels are almost emission free.



Power Station, Unterföhring

Areas of application for NORTEC raised floors:

- Computer rooms and control centres
- Industrial and plant rooms
- Training and research rooms
- Office and construction areas

Give yourself the freedom.

Allow your architectural ideas free rein – we incorporate your design ideas into the project. Our range of combinations from NORTEC to other systems gives you added flexibility at planning stage.

Increased load-bearing capabilities with C profiles and stringers.

Lindner floors are innately very resilient. However, the load-bearing capacity can be increased even more – for example with the use of stringers or C profiles. These and other reinforcement profiles are made in our own factory – they are available in many variations and fit all flooring systems.

Strong links between function and elegance: Floor coverings for NORTEC.

Give your NORTEC raised floor an individual look – with our stone, wood or standard coverings. Each floor system can be finished with a covering of your choice. A factory-bonded application with tested, emission free adhesive systems ensures long life and the best quality. Choose from our wide range of coverings such as rubber, PVC, HPL or carpet – almost any design is possible. For the highest standards a natural stone or parquet covering is the best – ask about STONEline and WOODline. You can find out more about these on the following pages.

STONEline: The foundation stone for elegant design with NORTEC and FLOOR and more®.

There is hardly any material as timelessly beautiful as smooth, polished natural stone. Discover the numerous advantages that STONEline can offer you.

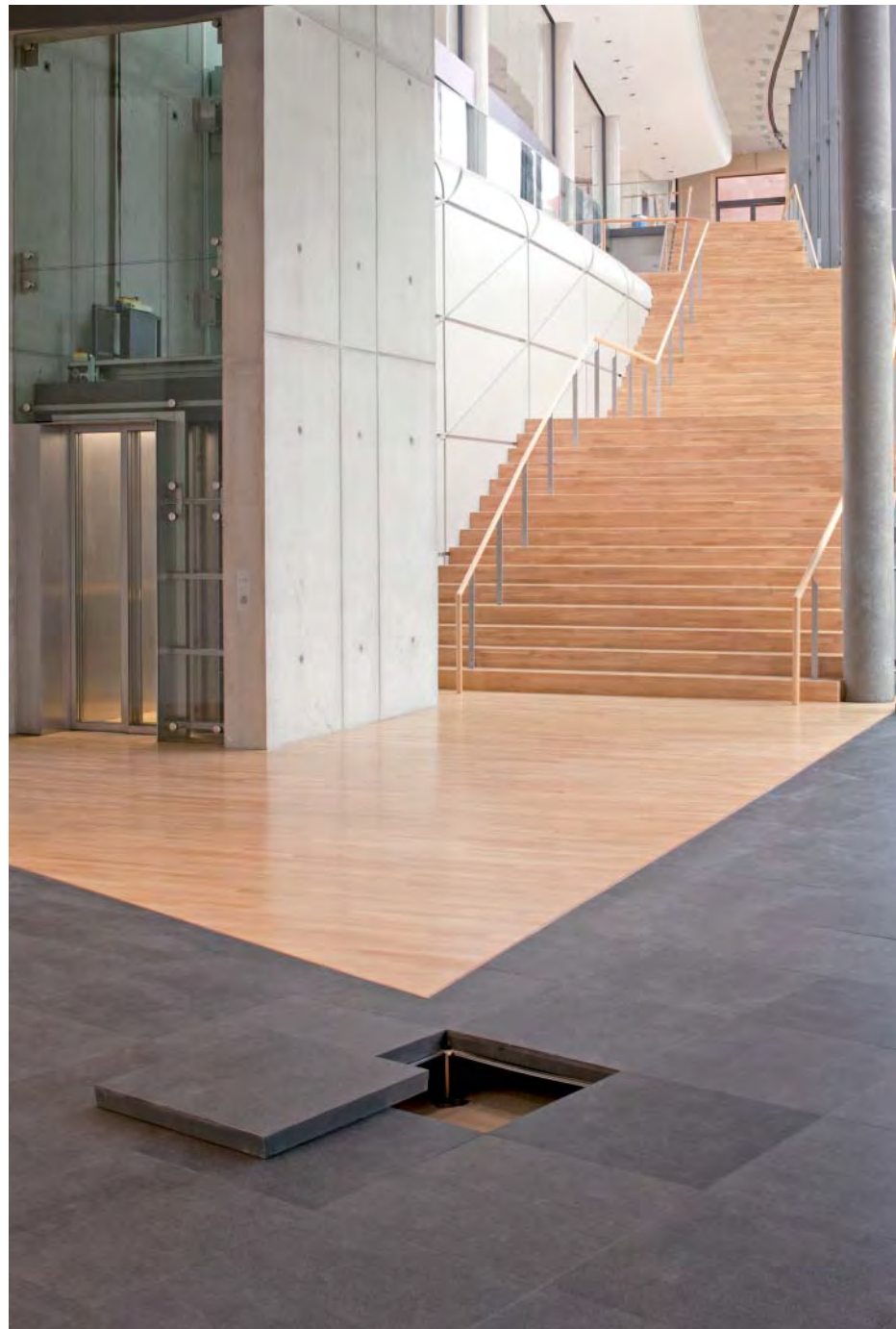
Natural or artificial stone for your floor:

- Granite – strong and natural
- Marble – elegant
- Artificial stone and ceramic – a wide variety of finishes

Lindner STONEline:

- Stable, easy-care and durable
- Resistant to heat and damp
- Natural stone from selected international sources
- Tolerance to very tight controls
- For NORTEC and FLOOR and more®

German National Library, Leipzig



The right floor for every idea: acoustic, comfort, power, sonic.

NORTEC raised floors are available as **acoustic** floor to regulate reverberation time, **sonic** for seepage ventilation, **power** which withstands particularly arduous loads and **comfort** with integrated heating and cooling technology.



A sustainable acoustic solution you can build on: NORTEC acoustic.

Thanks to its outstanding sound-absorption characteristics, NORTEC acoustic can be an integral part of the sound concept of a building. Indiscernible perforations in the floor panels, combined with suitable covering, guarantee optimal sound regulation. Optionally, Lindner acoustic flooring can also be equipped for seepage ventilation.



Sparkasse (Savings Bank), Hagen

A comfortable atmosphere for both architect and user: NORTEC comfort.

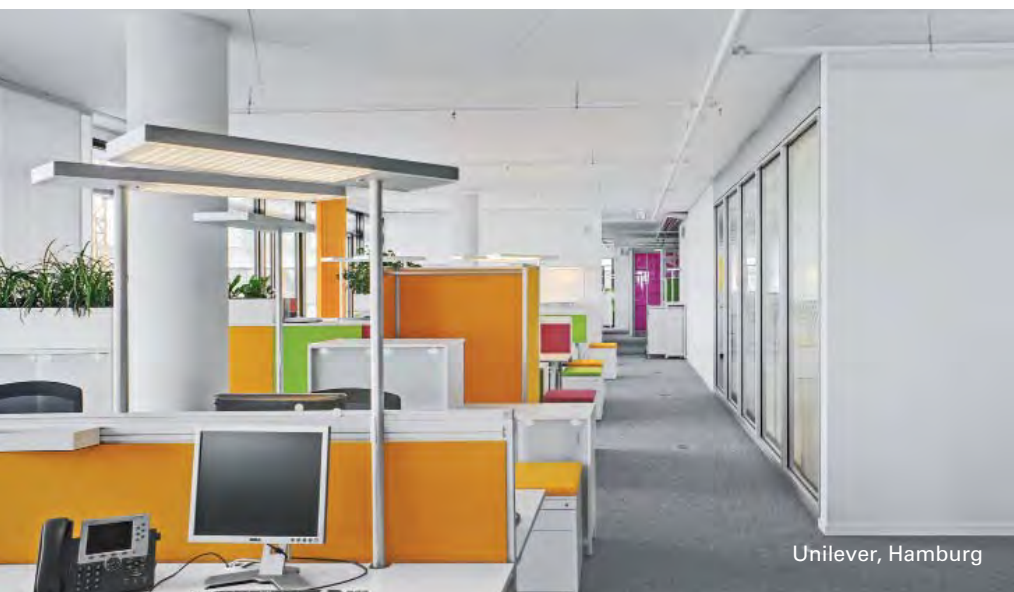
Intelligent heating and cooling systems in the floor cavity regulate the room climate to optimal values – in summer as well as in winter, providing a comfortable living and working environment. Even architects benefit from NORTEC comfort: The absence of radiators means that more free space is available at the planning stage.



RTL, Cologne

Takes the award for best supporting role when it comes to difficult tasks: NORTEC power.

Are you planning floors for a room that needs to withstand the highest levels of stress – for example in a production hall? Just choose NORTEC power: This high-quality product provides you with unmatched load-bearing capabilities.



Unilever, Hamburg

NORTEC sonic: fresh air for a creative mind.

Seepage ventilation is a highly efficient and effective way of maintaining a healthy indoor air quality. NORTEC sonic, combined with specially suited floor covering, enables you to continuously insert a pre-defined amount of fresh air through the raised floor.

A true economic miracle: Lindner LIGNA.

LIGNA raised floor panels are made of wood-based materials. They are the first choice where cost effectiveness is a critical issue. LIGNA is an optimal solution for your office space and plant rooms. What is more, this raised floor system exhibits a most advantageous CO₂ balance thanks to the responsible use of recycled materials in our modern production facilities in Arnstorf.

The numerous advantages of LIGNA raised floors:

- Excellent value for money
- Low emissions
- Exceptional air-tightness with made-to-measure floor panels
- C profiles for additional load-bearing capabilities
- Excellent electrostatic properties
- Can be combined with other flooring systems



Hypercube Skolkovo, Moscow



Nouvel Tower, Vienna



RTL, Cologne

Advantages wherever you go.

LIGNA raised floors provide effective fire proofing and are ideal from an ecological point of view. High manufacturing accuracy ensures extremely high levels of air-tightness.

Environmentally friendly quality.

Rated in the lowest emission class (E1), LIGNA satisfies the highest requirements of an environmentally friendly building.

Safe floors for your project.

LIGNA offers excellent safety standards. The density of the panels satisfies fire resistance requirements.

Always on top: Floor coverings for LIGNA.

All standard coverings are possible – from rubber and parquet to velour carpeting and PVC.

Factory finished bonding enhances the life of the floor covering. Create a harmonious atmosphere with WOODline parquet flooring.



WOODline is environmentally friendly and works responsibly with our resources.

As confirmed by the PEFC Logo (Programme for the Endorsement of Forest Certification Schemes).

WOODline: Prestigious parquet for LIGNA, NORTEC and FLOOR and more®.

Choose from a remarkable range of wood varieties and designs: we create all parquet just the way you want. We manufacture WOODline covering from solid wood tested to the highest quality criteria. To ensure that our wood is always of the best quality, we work closely with FSC and PEFC certified companies who deliver our high-quality raw materials.

Lindner WOODline:

- Made from solid wood
- Very long lasting
- Durable surface
- Suitable for NORTEC, LIGNA and FLOOR and more®

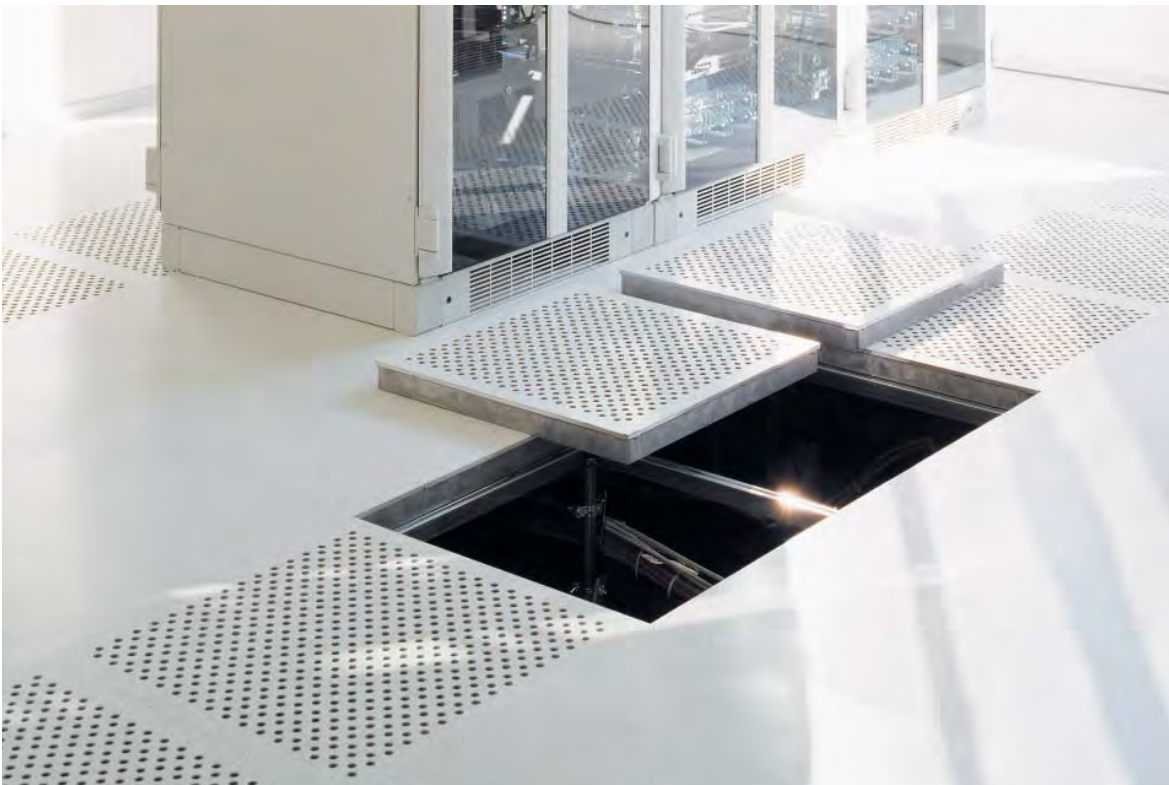


ADAC, Munich

Photo: © Xaver Lockau

Invisible perfection: Lindner substructure.

We also manufacture high quality steel pedestals for our raised floors including in-house galvanisation. Our many years of experience guarantee high load-bearing capacity and long life of all products. Lindner systems offer excellent flexibility: they can be combined in a variety of ways and can be used with different reinforcement profiles. Finally Lindner support profiles can be adjusted to level out any unevenness in the surface.



Campeon, Munich

Unique flexibility for all flooring systems.

Lindner brand pedestals:

- Large adjustable range
- Corrosion resistant
- High load-bearing capacity
- Easy installation



Power Station, Unterföhring

Decorative angle: Lindner LUMEN.

Create unique effects with LUMEN glass floors – available in transparent, opaque or coloured glass as well as with underfloor lighting.

Licence to gaze.

LUMEN provides you with exceptional aesthetics and outstanding lighting technology. As support profiles are not required, the visual appearance is maintained. Our glass floors can be combined with all our other systems to create an aesthetic and functional look.

Put your floor in the best light.

We develop integrated solutions with lights and lighting systems which give your glass floor an impressive effect. With our many years of experience in the area of lighting, we will be more than happy to assist you. Allow us to take care of all your lighting plans and calculations.

NorskTipping, Hamar

Photo: © Spot



Building using all the (technological) tricks of the trade: Lindner PRODATA.

Special rooms need special solutions:
PRODATA raised floors are perfectly coordinated to meet the requirements of all plant rooms and clean rooms. We can offer advice on the options available and can also develop project solutions.

The best result with ease.

PRODATA panels are made from aluminium, making them lightweight yet with high load-bearing capabilities. They can also be adapted to suit your specific ventilation needs.

Areas of application:

- Electronics and data technology
- Pharmaceuticals
- Medical engineering
- Optics
- Microsystems and precision technology
- Food technology



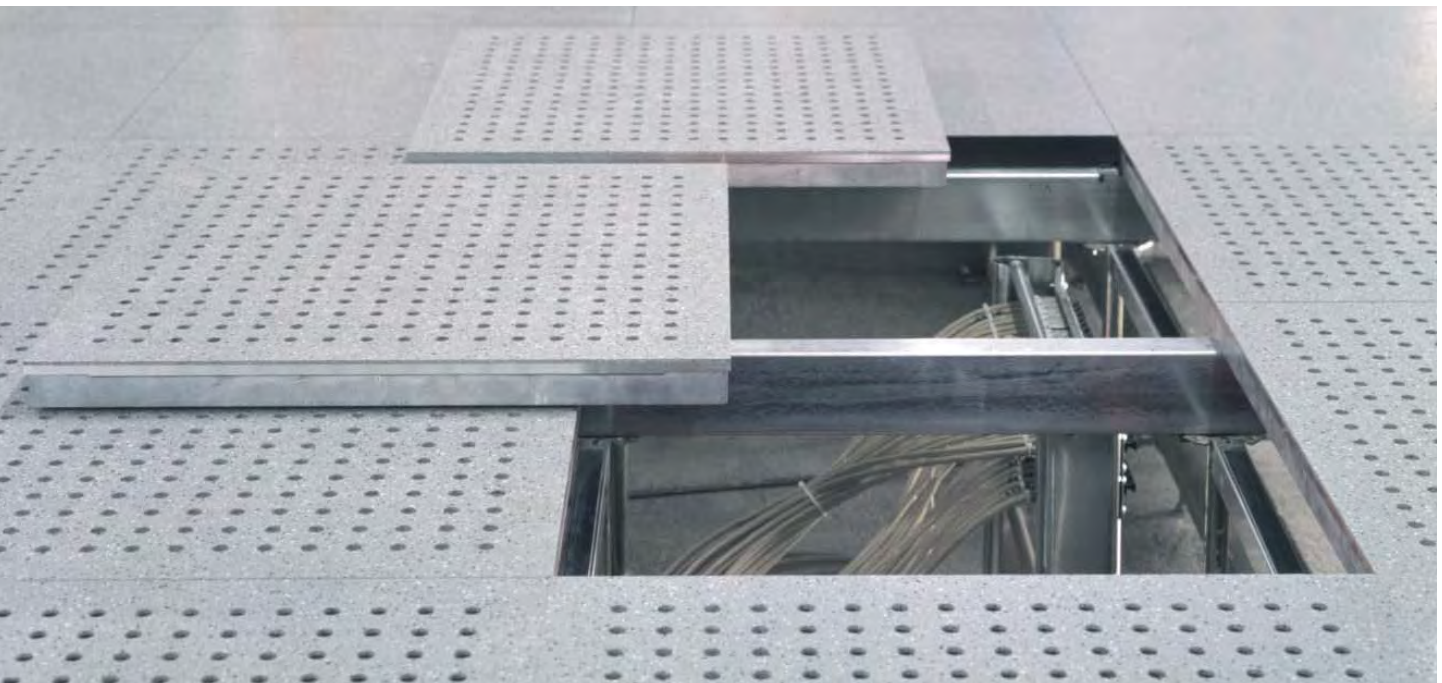
Infineon, Dresden

Particle free zone: Lindner clean rooms.

We also possess extensive knowledge and special equipment for use in the clean room sector. If required we can also take care of your entire building project, from project management to analysis of site conditions as well as delivery and installation of all components.

PRODATA at a glance:

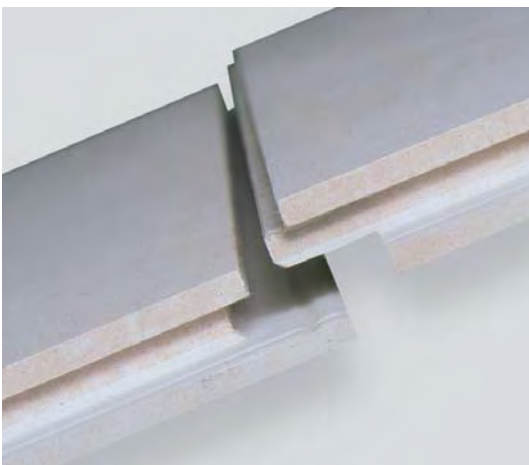
- High level of stability
- Integration of reinforced profiles
- Excellent electrostatic properties
- Can be combined with all other Lindner clean room systems such as walls and ceilings



BMW FIZ, Munich

Click and complete: Lindner dry screed systems.

Our innovative click system guarantees the laying of dry screed and underfloor heating in record-breaking time.



Quick! NORIT dry screed.

Get to know the trend-setting development from Lindner: calcium sulphate dry screed click system. The new click-in connection along the long edge of the panels means that the dry screed panels are simple and easy to lay and to lock in place. The panels are then joined together at the ends – dry screed can not be laid more quickly or easily!

NORIT dry screed with the unique click system:

- Fast and easy installation
- Ecologically approved and recommended
- Extremely accurate fit
- Ideal for private areas



NORIT underfloor heating – dry screed and heating in one.

Create extra comfort in your rooms with our underfloor heating systems, an integrated heating solution with the dry screed click system. Rebated grooves are formed to accept pipes. A panel thickness of only 33 mm makes this product perfect for renovations and fast track projects.

Make it cosy.

With NORIT underfloor heating:

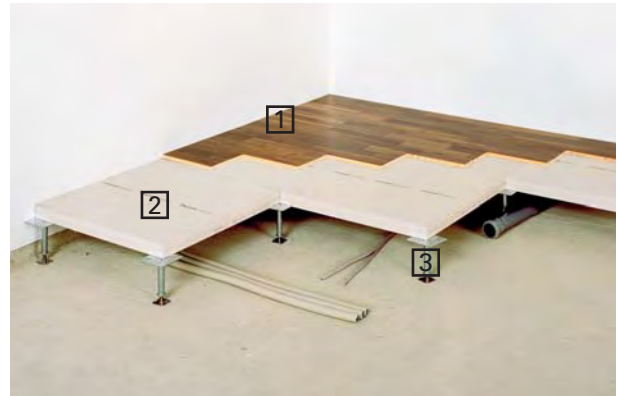
- Rebated grooves to accept pipes
- Pipes laid near the surface of the tile means the space warms up quickly
- Water heats up at low temperatures, saving energy
- Ready for use after 24 hours

A floor for all walks of life: FLOOR and more®.

This easy-to-lay, calcium sulphate dry flooring system features a jointless surface and can be used just one day after installation. Suitable for use in entrance halls and atriums as well as in offices and factory buildings – can be adapted to suit all needs.

Benefit from additional space during the construction phase:

- Easy-to-lay dry flooring system
- Ready to use after one day
- Space for electric and computer installations
- Jointless surface
- High level of fire and sound proofing
- Additional functions such as heating and ventilation
- Environmentally friendly materials and construction method



- 1 Choice of surfaces
- 2 Flooring elements with special edge connections
- 3 Adjustable steel substructure

BGW Head Office, Hamburg





Unilever, Hamburg

**Audible floor quality:
FLOOR and more®
acoustic.**

With their excellent sound absorption Lindner acoustic floors substitute openly visible acoustic measures in modern buildings.



University of Television and Film, Munich

**FLOOR and more®
arena – system floor
for elevated cultural
demands.**

FLOOR and more® arena is the foundation for building tiered levels in theaters and concert halls.

The flexible floor system adjusts to any type of installation thanks to the unique calcium sulphate planks which combine low system weight with high load-bearing capacity.



Silvertower, Frankfurt

FLOOR and more® comfort creates a feel-good atmosphere.

This integrated underfloor heating system provides a very good level of warmth in a highly efficient way.

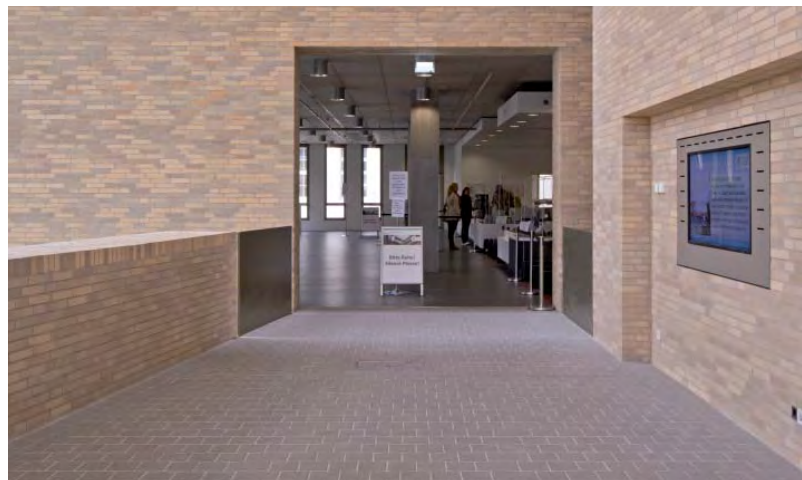
FLOOR and more® comfort heats up quickly, is lightweight and slim-line and eliminates the need for drying times, thus comparing favourably to screeds.



The Institute of Building Biology certifies the environmental compatibility of NORTEC and FLOOR and more®.

FLOOR and more® hydro – only repellent when it comes to water.

This version of FLOOR and more® was developed in-house against a specific project requirement. Not only the surface but the entire panel has been specially treated to repel water.



University and Regional Library, Darmstadt



Neues Museum, Berlin

FLOOR and more® power can withstand the heaviest of strains.

During manufacture we vary the load-bearing capacity and strength of materials to suit individual project requirements. FLOOR and more® power demonstrates additional resilience which is not only ideally suited for production facilities but also for showrooms, museums and libraries.

We turn your ideas into reality.

As your partner of choice we support you from the beginning of your project, making it possible to carry out your personal vision.

Research and Development: Keeping products in good working order.

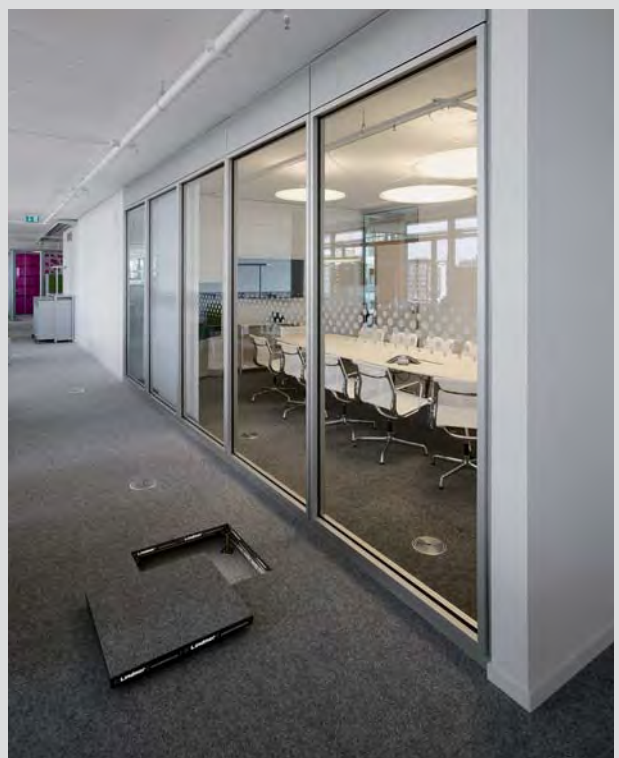
We provide a wide range of services in research and development, enabling you to achieve the best possible aesthetics for your project. Our highly qualified engineers implement your designs with product development and project-tailored construction.

Does what it says on the tin: Lindner Installation.

We provide you with products and installation from one source. You benefit from reduced product handling, the highest safety standards and a partner network built up over many years.

Beneficial checks: Lindner Maintenance.

Even after delivery of your product we are still there for you: we will carry out necessary inspections and renovations and we are also happy to take on the management of your building, commercially, technically and from an infrastructure perspective.



We can do it all for you.

Lindner Concepts:

- Airports and Railways
- Clean Rooms and Operating Theatres
- Cruise Liner and Ship Fit-out
- General Contracting
- Hotels and Resorts
- Insulation and Industrial Service
- Interior Fit-out and Furnishings
- Special-Purpose Constructions and Stadiums
- Studios and Concert Halls
- System Buildings

Lindner Products:

- Ceiling Systems
- Doors
- Dry Lining Systems
- Facades
- Floor Systems
- Heating and Cooling Technologies
- Lights and Lighting Systems
- Partition Systems
- Roofing Systems
- Steel & Glass

Lindner Service:

- Clearance of Harmful Substances
- Construction Management and Project Development
- Deconstruction and Interior Demolition
- General Planning
- Global Product Supplies
- Green Building
- Industrial Scaffolding
- Installation and Building Services
- Research and Development

Lindner Group

Bahnhofstrasse 29
 94424 Arnstorf
 Germany
 Phone +49 (0)8723/20-36 82
 Fax +49 (0)8723/20-28 30
floorsystems@Lindner-Group.com
www.Lindner-Group.com