

## Decorì classici

Highly decorative finish for interior with multi-shade effect



Venetian emotions

### S387 Highly decorative finish for interior with multi-shade effect

Decorì Classici is a high quality interior decorative finish. It recreates the sophisticated and unique settings that are typical of Renaissance era buildings. Decorì Classici is normally applied in one coat, with an indicative spreading rate of 6-8 m<sup>2</sup>/l.

Tools: brush and special PVC spatula.



## Grassello di calce

Classical interior period decoration



Venetian emotions

### S946 Classical interior period decoration

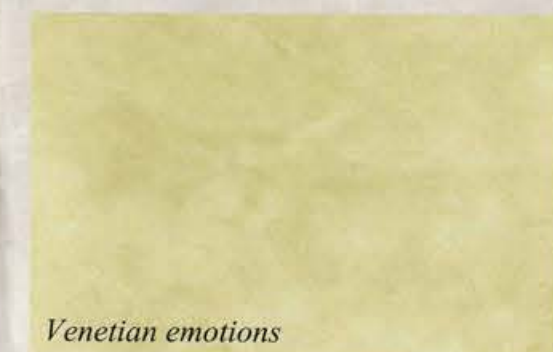
Grassello di Calce is an interior coating based on air-hardening lime for obtaining high quality decorative gloss finishes in soft shades that vary depending on the application technique. Grassello di Calce is normally applied in at least two coats, with an indicative spreading rate of 1-1.2 kg/m<sup>2</sup> for two coats.

Tools: steel trowel.



## Perlacao

Perlascient interior siloxane decorative finish



Venetian emotions

### S384 Perlascient interior siloxane decorative finish

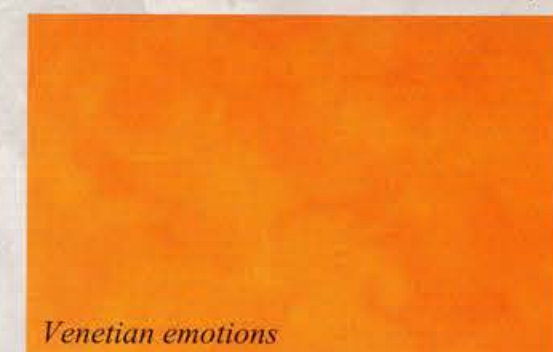
Perlacao is a finish coat with a pearly effect which creates particular and refined chromatic effects, highlighted when hit by light. Perlacao is normally applied in one coat, with an indicative spreading rate of 15-20 m<sup>2</sup>/l per coat.

Tools: brush, sponge, wad or cloth.



## Velature

Siloxane decorative and protective treatment with antiqued effect for exterior and interior



Venetian emotions

### S383 Siloxane decorative and protective treatment with antiqued effect for exterior and interior

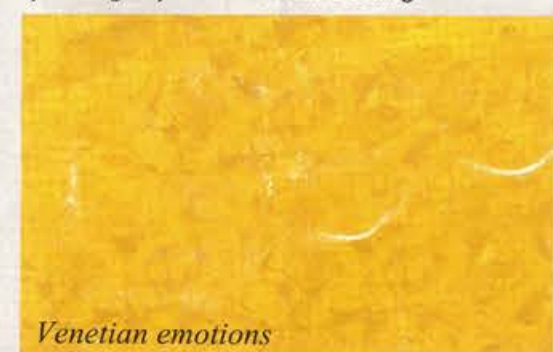
Velature creates decorations with an antiqued effect, characterised by soft and muted hues. With excellent breathability and good water repellency, it is used to create resistant exterior finishes. Velature is normally applied in one coat, with an indicative spreading rate of 15-20 m<sup>2</sup>/l.

Tools: brush, sponge, wad or cloth.



## Stucco Veneziano

Synthetic glossy interior decorative coating



Venetian emotions

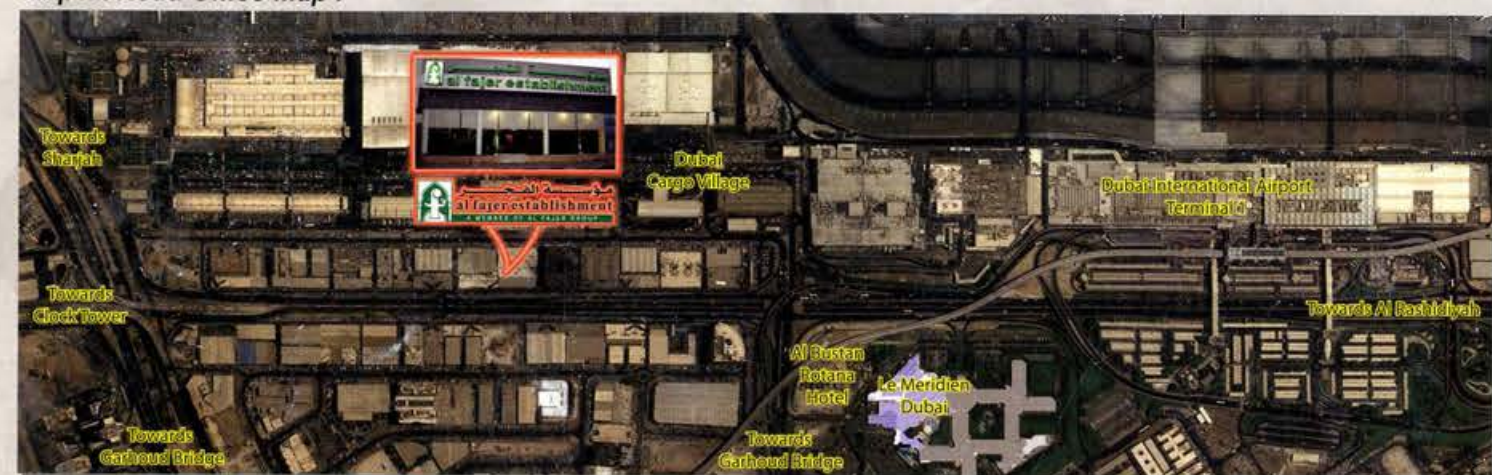
### S943 Synthetic glossy interior decorative coating

Used to obtain a highly unique coating that resembles the typical stucco's of ancient Venetian buildings. Besides application onto flat surfaces, Stucco Veneziano can also be applied to special architectural elements, such as mouldings and columns. Stucco Veneziano is normally applied in at least three coats, with an indicative spreading rate of 1-1.4 kg/m<sup>2</sup> on two-coat plaster.

Tools: steel trowel.



### Airport Road Office Map :



### Ras Al Khor Office Map :



**Dubai Office**  
P.O. Box 1600  
Airport Road, Dubai  
Tel.: +971 4 282 3145  
Fax: +971 4 282 3015

**Aweer Office**  
P.O. Box 2752  
Ras Al Khor, Dubai  
Tel.: +971 4 333 2985  
Fax: +971 4 333 0364

E-mail: [paints@fajerest.ae](mailto:paints@fajerest.ae) Web: [www.fajerest.com](http://www.fajerest.com)



**Abu Dhabi Office**  
P.O. Box 2752  
Najdha Str., Abu Dhabi  
Tel.: +971 2 641 1303  
Fax: +971 2 641 1378



**مؤسسة الفجر**  
al fajer establishment  
A MEMBER OF AL FAJER GROUP

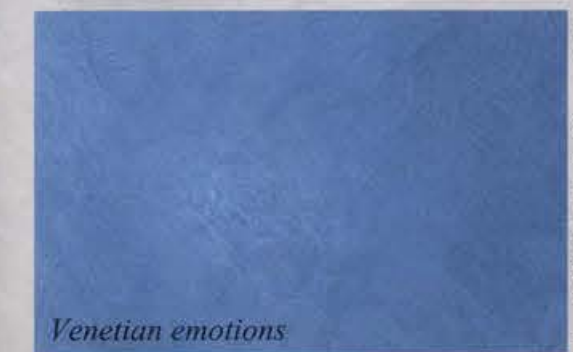


**Paints Division**  
A Division of Al Fajer Establishment



## Antica calce plus

Brushed effect decorative mineral coating for interiors



Venetian emotions

### S396 Brushed effect decorative mineral coating for interiors

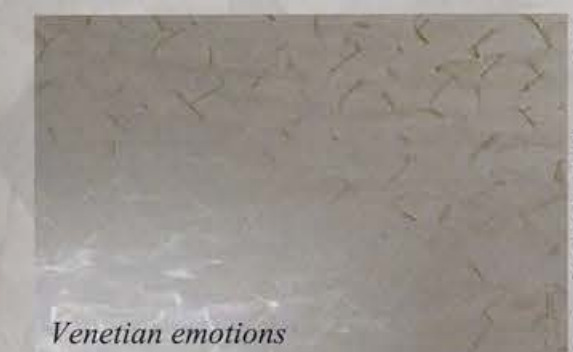
Antica Calce Plus is a lightly textured elegant finish coating characterized by light and shade effects which highlight the brush strokes, and is pleasant to the touch thanks to the traditional polishing technique. Antica Calce Plus is normally applied in at least two coats, with an indicative spreading rate of 0.4-0.6 kg/m<sup>2</sup> based on two coats.

Tools: brush, steel trowel.



## ABC riflessi

Interior decorative finish with iridescent effect



Venetian emotions

### S378 Interior decorative finish with iridescent effect

ABC Riflessi offers various decorations with semi-transparent, glossy, iridescent and mother-of-pearl effects. Applicable on walls, plasterboard and wood. Unlimited effects can be obtained thanks to the endless colour combinations between primer/finish coats. ABC Riflessi is normally applied in 1-2 coats, with an indicative spreading rate of 8-12 m<sup>2</sup>/l per coat.

Tools: paint pad, sponge, plastic painting knife, decorative roller.



## Cadoro Velvet

Velvety effect interior decorative finish



Venetian emotions

### S377 Velvety effect interior decorative finish

Velvety effect interior decorative finish Cadoro Velvet is an elegant and sophisticated interior finish able to reproduce the velvet effect, rich in shading and soft to the touch. Indicated for classical period environments and distinctly modern contexts. Cadoro Velvet is normally applied in at least two coats, with an indicative spreading rate of 3-5 m<sup>2</sup>/l based on two coats.

Tools: brush, steel/plastic trowel.



## Classic

Interior-exterior decorative coating



Venetian emotions

### S942 Interior-exterior decorative coating

Classic creates an elegant effect similar to a "stucco". It dignifies exterior wall surfaces and has excellent weatherability and good adhesion to the support. Classic is normally applied in at least three coats, with an indicative spreading rate of 1-1.4 kg/m<sup>2</sup> on two-coat plaster.

Tools: steel trowel.





# Cadoro

Iridescent interior decorative finish

## S379 Iridescent interior decorative finish

Cadoro is a decorative finish for interiors with special iridescent effects, characterized by a silky and soft to the touch look. Ideal for creating suggestive classical and modern settings. Cadoro is normally applied in at least two coats, with an indicative spreading rate of 4-6 m<sup>2</sup>/l based on two coats.

Tools: brush, steel/plastic trowel.



# Marcopolo

Interior decorative finish with unrefined metallic effect

## S376 Interior decorative finish with unrefined metallic effect

Marcopolo is an interior decorative finish with metallic effect that is used for making surfaces that have a rough appearance where incidental lighting creates suggestive and bright chromatic contrasts. Marcopolo is normally applied in one coat, with an indicative spreading rate of 4-6 m<sup>2</sup>/l.

Tools: brush and sponge.



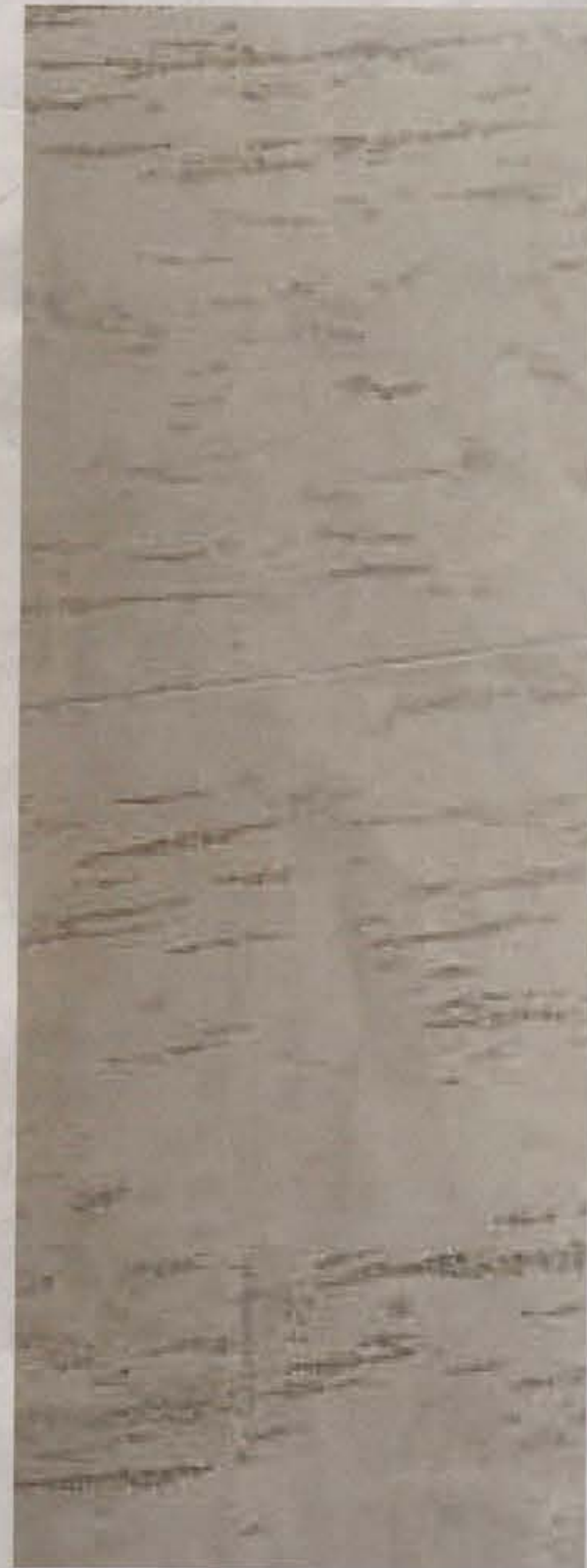
# Marmo antico

Interior-external decorative mineral coating with travertine marble effect

## S960 Interior-external decorative mineral coating with travertine marble effect

With excellent breathability, Marmo Antico is used to obtain a finish with a porous and scuffed effect that resembles the typical appearance of travertine rock. This decorative finish provides a chromatic weaving effect and is characterised by many shades. Marmo Antico is normally applied in at least two coats, with an indicative spreading rate of 2.5-3 kg/m<sup>2</sup>.

Tools: steel trowel.



# Marmorino Classico

Interior-external trowelled decorative mineral coating

## S947 Interior-external trowelled decorative mineral coating

Marmorino Classico is an interior-external coating with mineral binder base. It is indicated as a high quality finish for work on buildings that may even be of historic importance. Marmorino Classico is normally applied in at least two coats, with a theoretical coverage rate of 2.5-3 kg/m<sup>2</sup> for the two coats.

Tools: steel/plastic trowel, sponge.

