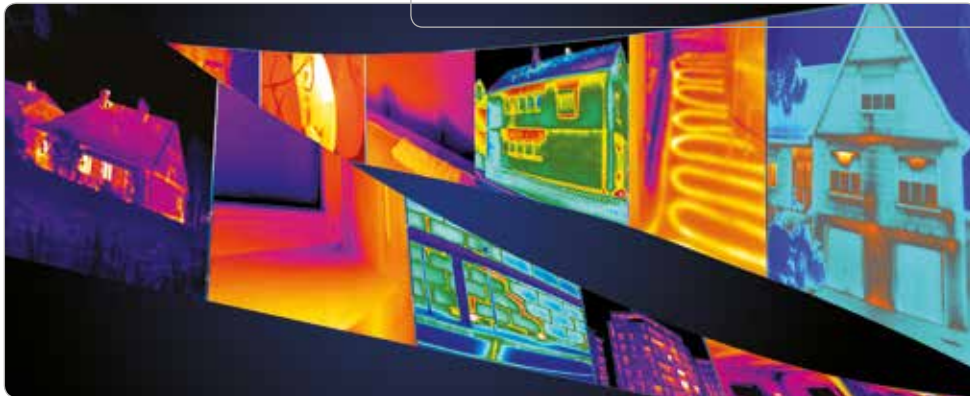


## Thermal imaging cameras for building inspections



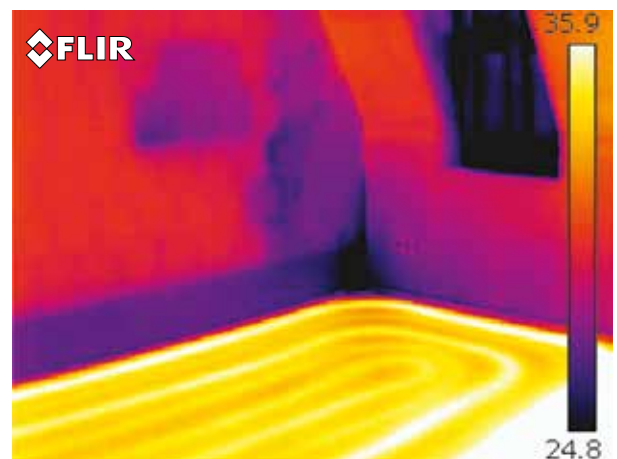
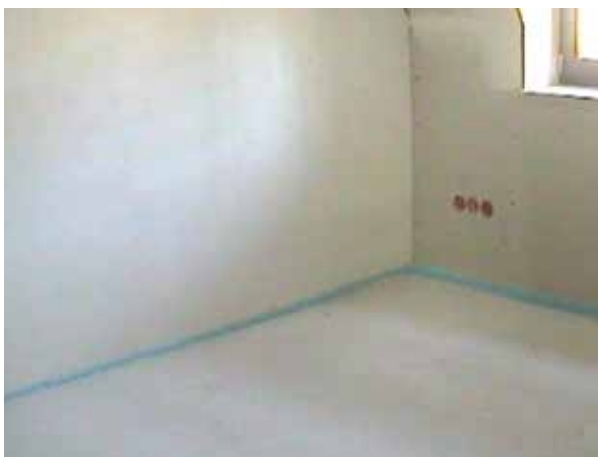
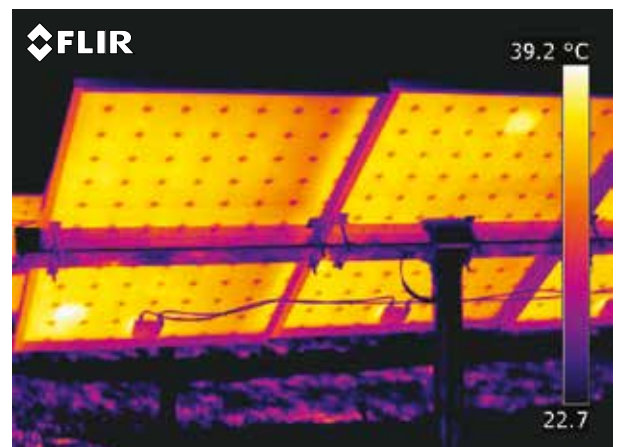
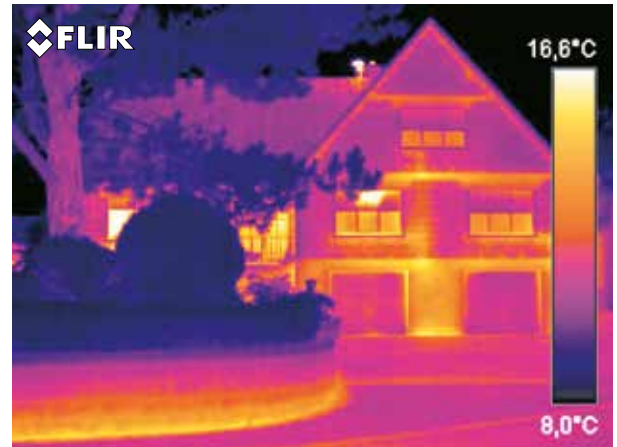
Building inspections

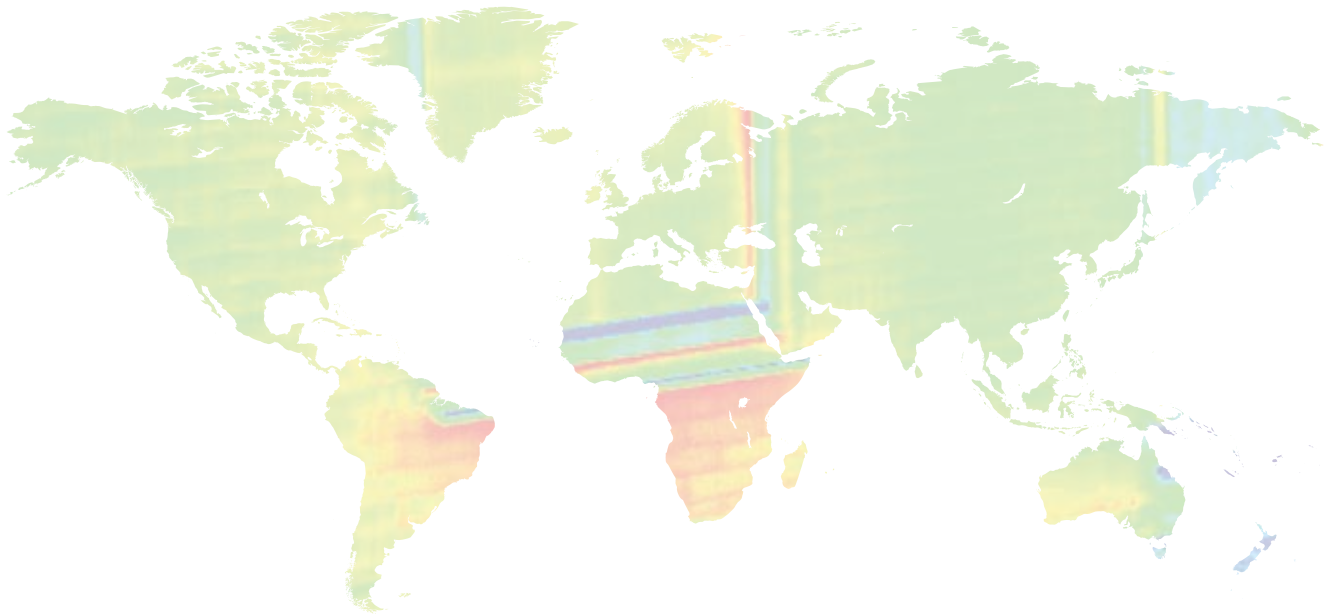
Insulation

Energy loss

Plumbing and piping

# Thermal imaging cameras for building inspections and renewable energy





## FLIR Systems: the world leader in thermal imaging cameras

FLIR Systems is the world leader in the design, manufacturing and marketing of thermal imaging systems for a wide variety of commercial, industrial and government applications.

FLIR Systems' thermal imaging systems use state-of-the-art infrared imaging technology that detects infrared radiation - or heat. Based on detected temperature differences, thermal imaging cameras can create a crisp image. Complicated algorithms make it also possible to read correct temperature values from this image. We design and manufacture all of the critical technologies inside our products, including detectors, electronics, and special lenses ourselves.



*FLIR Systems Stockholm*



*FLIR Systems Portland  
Corporate Headquarters*



*FLIR Systems Boston*



*FLIR Systems Santa Barbara,  
California*

### **Rapidly emerging markets and organization**

Interest for thermal imaging has grown considerably over the last few years in a large variety of markets. To face this increased demand, FLIR Systems has expanded its organization drastically. Today we employ more than 3,200 people. Together, these infrared specialists realize a consolidated annual turnover of more than 1 billion US dollars. This makes FLIR Systems the largest manufacturer of commercial thermal imaging cameras in the world.

### **Manufacturing capabilities**

FLIR Systems currently operates 6 manufacturing plants: three in the USA (Portland, Boston and Santa Barbara, California) one in Stockholm, Sweden, one in Estonia and one in Paris, France.

### **Thermal imaging: more than building a camera**

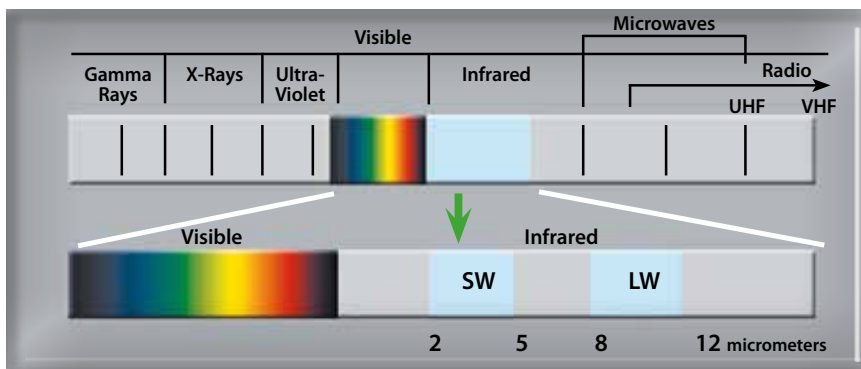
There is more to the world of thermal imaging than building a camera. FLIR Systems is not only committed to providing you with the best camera, we are also able to offer you the best software, service and training to suit your thermal imaging needs.

## INFRARED: more than meets the eye

### Infrared - part of the electromagnetic spectrum

Our eyes are detectors that are designed to detect visible light (or visible radiation). There are other forms of light (or radiation) that we cannot see. The human eye can only see a very small part of the electromagnetic spectrum. At one end of the spectrum we cannot see ultraviolet light, while at the other end our eyes cannot see infrared. Infrared radiation lies between the visible and microwave portions of the electromagnetic spectrum. The primary source of infrared radiation is heat or thermal radiation.

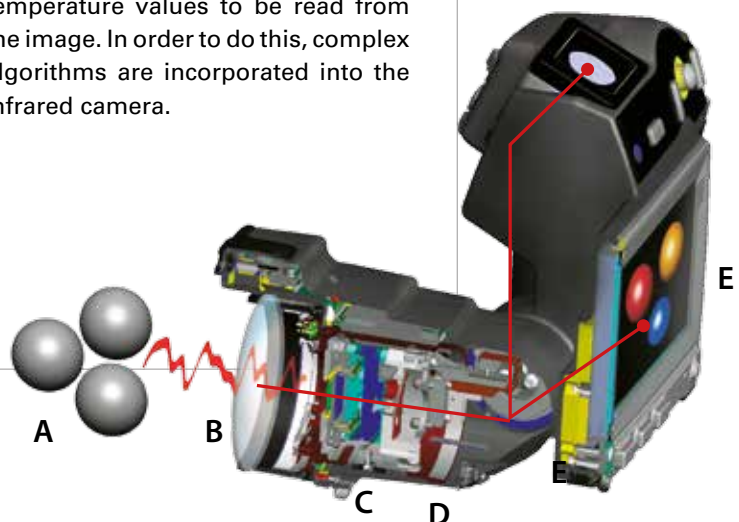
Any object that has a temperature above absolute zero (-273.15 degrees Celsius or 0 Kelvin) emits radiation in the infrared region. Even objects that we think of as being very cold, such as ice cubes, emit infrared radiation. We experience infrared radiation every day. The heat that we feel from sunlight, a fire or a radiator is all infrared. Although our eyes cannot see it, the nerves in our skin can feel it as heat. The warmer the object, the more infrared radiation it emits.



### The infrared camera

Infrared energy (A) coming from an object is focused by the optics (B) onto an infrared detector (C). The detector sends the information to sensor electronics (D) for image processing. The electronics translate the data coming from the detector into an image (E) that can be viewed in the viewfinder or on a standard video monitor or LCD screen.

Infrared thermography is the art of transforming an infrared image into a radiometric one, which allows temperature values to be read from the image. In order to do this, complex algorithms are incorporated into the infrared camera.



## Why use thermal imaging cameras?

Why would you choose a FLIR thermal imaging camera? There are other technologies available to help you measure temperatures in a non-contact mode. Infrared thermometers for example.

### Infrared thermometers vs thermal imaging cameras

Infrared (IR) thermometers are reliable and very useful for single-spot temperature readings, but, for scanning large areas, it's easy to miss critical parts like air leakages, areas with insufficient insulation or water intrusion.

A FLIR thermal imaging camera can scan entire buildings, heating and HVAC installations. It never misses a potential problem area no matter how small this might be.

### Use thousands of infrared thermometers at the same time

With an infrared thermometer you are able to measure the temperature at one single spot. FLIR thermal imaging cameras can measure temperatures on the entire image. The FLIR i3 has an image resolution of 60 x 60 pixels. This means that it is equal to using 3,600 IR thermometers at the same time. If we look at the FLIR T640bx, our top model, which has an image resolution of 640 x 480 pixels, this means 307,200 pixels or using 307,200 infrared thermometers at the same time.



*IR thermometer, temperature measurement in one spot*



*FLIR i3, temperature in 3,600 spots*

### Find problems faster and easier with extreme accuracy.

It is easy to miss a critical building problem if you are only using a spot IR thermometer. A FLIR thermal imaging camera will give you a total view of the situation and instant diagnostic insights. It not only locates a construction problem in a building but shows the full extent of problems.



*What an IR Thermometer sees*



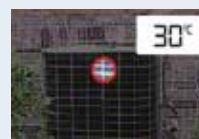
*What a thermal imaging camera sees*



*What an IR Thermometer sees*



*What a thermal imaging camera sees*



*What an IR Thermometer sees*



*What a thermal imaging camera sees*

## Thermal imaging cameras for building applications

Since the 1970s we have become increasingly conscious that energy resources are precious and limited.

Thermal imaging cameras can help you to make insulation problems and other building anomalies clearly visible. This way not only corrective actions can be taken but also energy can be saved.

The building sector accounts for 40% of the EU's energy requirements and offers the largest single potential for energy efficiency. Due to the huge potential the European commission has formed a directive for energy performance regulation of buildings – on which many national laws already are based.

Recent economic stimulus packages in many countries, are likely to drive the demand for air tightness testing and other methods for investigating energy efficiency. The use of thermal imaging, alone or in combination with other methods, speeds up the work considerably as thermal imaging pinpoints exactly where to focus energy savings efforts – without any destructive testing.

The easiest and quickest method of detecting energy waste in buildings is thermal imaging. A thermal imaging camera shows exactly where the energy waste problems are and helps focus the inspectors attention allowing them to properly diagnose these areas of loss.

## Why use thermal imaging in the building industry?



Thermal imaging reveals a hidden window construction invisible to the human eye.



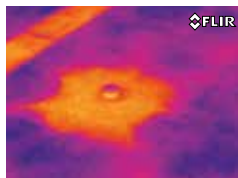
Leaks in an underground district heating network.

### Quickly Diagnose Building Conditions:

Buildings can quickly and thoroughly be scanned using a FLIR thermal imaging camera, identifying problem areas that can not be seen by the naked eye. This ensures the integrity of both structural and environmental systems for building inspection, repair verification and insurance related purposes.



The thermal image shows mould on the interior wall due to water infiltration.



The thermal image shows water leakage in the roof.

### Easy Non-invasive/Non-destructive Testing:

Thermal imaging can facilitate repairs quickly, easily and safely and much more cost effective than other conventional methods. A thermal imaging camera minimizes the need for building disassembly – saves time and labour by minimizing down time, repair time, labour costs and disturbance of habitants, as well as verification of a job well done.

- Check energy efficiency
- Quickly locate missing insulation and areas of energy loss
- Verify proper systems operation



**Thermal imaging cameras:**

- Are as easy to use as a camcorder or a digital camera
- Give you a full image of the situation
- Perform inspections when systems are under load
- Identify and locate the problem
- Measure temperatures
- Store information
- Tell you exactly what needs to be fixed
- Find the problems before real problems occur
- Save you valuable time and money



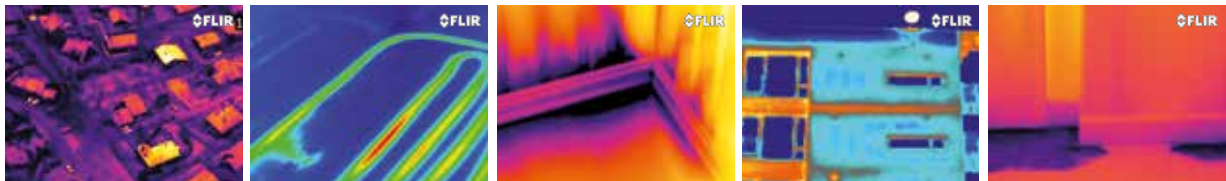
Thermal image shows insulation quality of a low energy house.

This building is warmer on the inside. Missing insulation, impossible to see visually.

Framework construction. Many of the sections are missing insulation as indicated by the warmer colors.

Glass roof above an atrium. Cold air is coming in at the floor.

Missing insulation in parts of the wall.



The buildings with yellow colored roofs show there is a moisture or insulation problem.

The image above shows a water leak from a hot water pipe in the floor heating.

The image shows air-leaks at the base board.

The image shows a thermal bridge at one of the floors.

Moisture intrusion in floor, impossible to see with the human eye, but clearly visible in the thermal image.

**A wide range of thermal imaging cameras for building inspections**

FLIR Systems markets a full product range of thermal imaging cameras for building applications. Whether you are just discovering the benefits that thermal imaging cameras have to offer or if you are an expert thermographer, FLIR Systems offers you the correct tool for the job.

**Discover our full product range and find out why FLIR Systems is the world leader in thermal imaging cameras.**



Energy auditing

ing HVAC & plumbing

structions Renewable energies

ing diagnostics

Windows reseller



## Unique FLIR Systems features



As the world leader in thermal imaging cameras FLIR Systems is constantly introducing new thermal imaging cameras and features that are allowing for even more efficient and faster thermal inspections.

### "Industry first" features

Connecting thermal imaging cameras with other measurement tools has become extremely important. Results need to be analyzed and need to be sent to customers or management. In order to facilitate these tasks FLIR Systems has equipped most of its thermal imaging cameras with unique, "industry first" features.



### WiFi compatibility

Allows to wirelessly transfer images from your thermal imaging camera.

- Show what you are seeing to a colleague or customer that is a distance away. This is extremely useful when measurements need to be done in hard to reach areas or difficult environments.
- Analyse thermal images directly on the iPad, iPhone or Android smartphone.
- Generate comprehensive reports.
- Send the inspection reports immediately to your colleagues, customers or management via e-mail.



### FLIR Tools Mobile App for Android, iPad, iPhone, and iPod Touch

FLIR leads the way with forward-thinking Wi-Fi connectivity to Android and to iPad, iPhone and iPod Touch devices. Just download the new FLIR Tools Mobile app from Android Market or from the App Store and you're ready to see, capture and import thermal images as well as to stream and capture live video from select FLIR cameras. FLIR Tools Mobile can also be used for remote control of the camera.



### MeterLink

FLIR MeterLink technology makes it possible to transfer, via Bluetooth, the data acquired by an Extech moisture meter into the thermal imaging camera.

- Saves time: no need to take notes during the inspection.
- Eliminates the risk of erroneous notes.
- Speeds up the reporting process: all values are automatically included in your report.
- Combine your thermal image with measurement data.



### Touch screen

An LCD touch screen brings interactivity and user comfort to a new level.





# FLIR Point and shoot thermal imaging cameras

point and shoot



FLIR i-Series



FLIR Ebx-Series



## FLIR i-Series

FLIR i-Series thermal imaging cameras are ideal for users that are just discovering the benefits that thermal imaging has to offer. Extremely easy-to-use, they will help you to do your first thermal inspections.



## FLIR Ebx-Series

The FLIR Ebx-Series have been developed for those that already know the benefits that thermal imaging cameras have to offer and want better image quality or more reporting options. The FLIR Ebx-Series contain a number of useful features that will speed up your inspections drastically.

# FLIR i-Series

Easy-to-use point-and-shoot thermal imaging cameras



FLIR i3/i5/i7 are the smallest, lightest and most affordable thermal imaging cameras on the market. They are incredibly easy to use and require no former experience. It really is a matter of "point and shoot" to obtain high-quality thermal images that will immediately give you the thermal information you need.



## Outstanding ease-of-use

The cameras are extremely easy to understand and operate, designed for entry-level users. The cameras are intuitive and come with a full manual.



## Fully automatic

FLIR i3/i5/i7 produce instant, point-and-shoot JPEG thermal imagery with all required temperature data included.



## Focus free

The fixed focus free lens makes using the FLIR i3/i5/i7 a snap.



## Compact and lightweight

FLIR i3/i5/i7 weighs only 365 g, and is easy to store in a belt pouch.



## Extremely rugged

FLIR i-Series thermal imaging cameras withstand a 2 meter drop. They are watersplash proof and IP43 rated.



## SD card storage

Stores images with unique ID in radiometric JPEG format, containing all temperature data, on a standard miniSD card. USB file transfer to PC.



## Reporting and analysis software included

FLIR Tools software is included and the cameras are also compatible with the more powerful FLIR Reporter.



## Measure temperatures

Measures temperatures up to +250°C and detects temperature differences as small as 0.10°C (0.15°C for FLIR i3).



## Measurement functions

Spotmeter, box with max./min. temperatures, isotherm above/below.\*

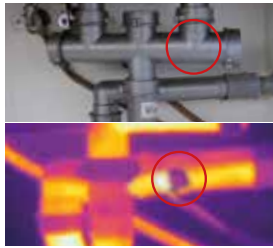
*\* Features dependant on camera model, please check technical specifications for more details.*

Quickly diagnose Building conditions



The thermal inspection locates missing insulation in the roof. This can now be repaired and further energy loss prevented.

Detect plumbing issues



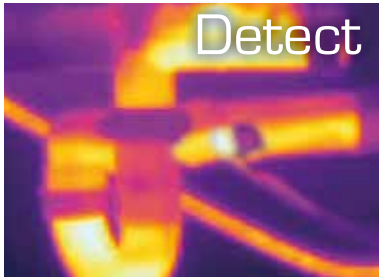
The blockage in this pipe is quickly located using a thermal camera. Action will be taken before the problem gets worse.



Point



Shoot



Detect

### Save time and money in 3 steps:

- Detect hidden problems, make quick damage assessments and perform preventive inspections
- Identify energy losses and poor insulation
- Spot electrical faults before it is too late
- Produce instant thermal images of your findings
- Create reports, analyse and document your findings with the easy-to-use software

### FLIR i-Series camera model comparison



#### FLIR i3



Thermal image quality: 60x60 pixels

Field of View: 12.5°(H) x 12.5°(V)

Thermal sensitivity: 0.15°C Center spot

#### FLIR i5



Thermal image quality: 100x100 pixels

Field of View: 21°(H) x 21°(V)

Thermal sensitivity: 0.10°C Center spot

#### FLIR i7



Thermal image quality: 140x140 pixels

Field of View: 29°(H) x 29°(V)

Thermal sensitivity: 0.10°C Spotmeter, area with max./min. temperature, isotherm above/below

# FLIR Ebx-Series



## Lightweight design, Heavyweight performers

The FLIR Ebx-Series are small and lightweight thermal imaging cameras designed for those needing higher resolution and more features and for whom documentation of findings are important.

The FLIR Ebx-models include the features you need to make well informed building decisions like built-in insulation and dew point alarms. The cameras are specifically designed for building inspections such as, HVAC heating and cooling issues, air flow, moisture detection, insulation problems, and much more.

320  
x  
240

### Up to 320 x 240 pixels resolution

The FLIR Ebx-Series thermal image resolution ranges from 160x120 pixels to 320x240 pixels depending on camera model. Every additional pixel means more valuable temperature information to isolate problem areas.



### Compact and lightweight

FLIR Ebx-Series models weigh only 825g (battery included).



### Extremely rugged

FLIR Ebx-Series thermal imaging cameras withstand a 2 meter drop. They are IP54 rated.



### High quality visual camera

Visible light camera makes observing and inspecting faster and easier.



### Thumbnail image gallery

An easy-to-access thumbnail image gallery helps you to quickly review and find your thermal images.



### ± 2% accuracy

High accuracy of ± 2% or ±2°C of reading.



### LCD touch screen

Large 3.5" LCD color touch screen.



### Built-in LED light

The built-in LED lamp ensures quality visual images regardless of job site lighting levels.



### Long life battery

With a 4 hour battery life its easy-to-replace Lithium Ion batteries will keep up with your demanding schedule.



### Laser Pointer

A conveniently located button activates the laser pointer that will help you associate the hot or cold spot in the IR image with the real physical target in the field.



### Picture-in-Picture (PiP)

With the PiP-function it is easy to locate areas of interest.\*



### Thermal Fusion

Merges visual and thermal images to offer better analysis.\*



### Instant reports

Create instant reports directly in camera. Easy to copy reports to USB.\*



### Humidity / Insulation Alarm

The Relative Humidity Alarm alerts you to the areas where there is a risk of condensation. An Insulation Alarm shows the insulation performance of the building structure.



### Text and voice annotations

Text comments can be made from a pre-defined list or by using the touch screen. A headset can be connected to make voice annotations.\*



### Interchangeable lenses

In order to adapt the FLIR Ebx-Series to every situation both wide angle and tele-lenses are available.

*\* Features dependant on camera model, please check technical specifications for more details.*



Large 3.5" touchscreen



Large backlit buttons fit bare hands or gloves



METER LINK  
Bluetooth

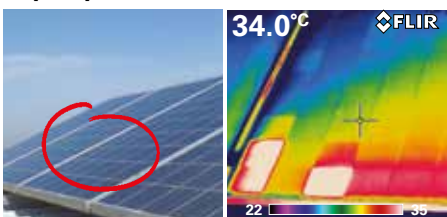


Connect to smartphone or tablet via Wi-Fi, using the FLIR Tools mobile app (Apple iOS and Android) for processing and sharing results as well as for remote control.



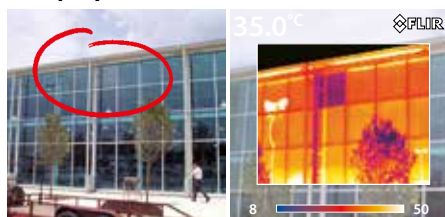
The FLIR Ebx-Series is equipped with a digital camera, a LED lamp and a laser pointer.

**Inspect photovoltaic cells**



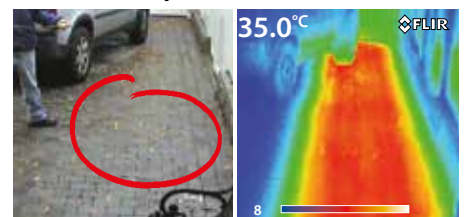
Defects in photovoltaic cells are clearly visible on a thermal image.

**Verify repairs and installations**



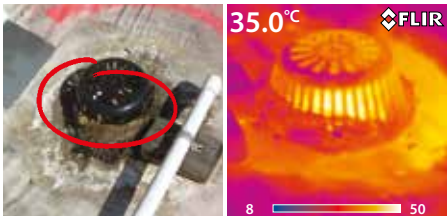
The thermal inspection reveals an incorrect window installation.

**Locate hidden problems**



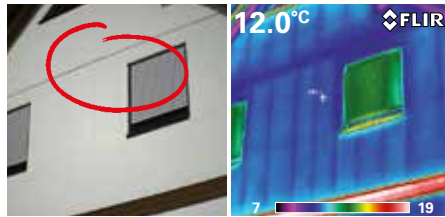
Heated pavement, but only a part of it is working.

**Find and assess water damage**



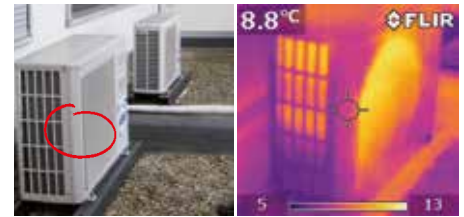
The thermal image shows water leakage in the roof.

**Identify energy losses and poor insulation**



The thermal inspection locates missing insulation in the wall.

**Locate HVAC problems**



Check-up of a heat, ventilation or air conditioning installation quick and easy.

**FLIR Ebx-Series camera model comparison**

**FLIR E30bx**



Thermal image quality:  
160x120 pixels  
Thermal sensitivity: <0.1°C  
Spotmeter: 1  
1 box with min./max./average  
Built-in 2 Mpixels digital camera

**FLIR E40bx**



Thermal image quality:  
160x120 pixels  
Thermal sensitivity: <0.045°C  
Spotmeter: 3  
3 boxes with min./max./average  
Built-in 3.1 Mpixels digital camera  
Non-radiometric IR-video recording  
Radiometric IR-video recording  
Non-radiometric IR-video streaming  
Delta temperature measurement  
Voice / text annotations  
MeterLink™  
Bluetooth® / WiFi  
1-2x continuous digital zoom  
PiP IR area on visual image

**FLIR E50bx**

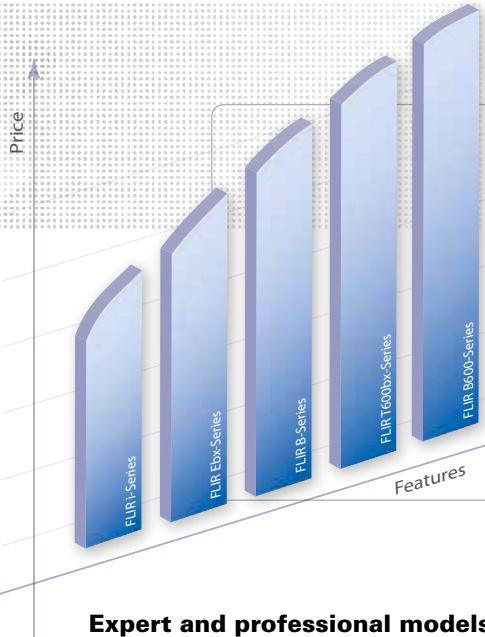


Thermal image quality:  
240x180 pixels  
Thermal sensitivity: <0.045°C  
Spotmeter: 3  
3 boxes with min./max./average  
Built-in 3.1 Mpixels digital camera  
Non-radiometric IR-video recording  
Radiometric IR-video recording  
Non-radiometric IR-video streaming  
Delta temperature measurement  
Voice / text annotations  
MeterLink™  
Bluetooth® / WiFi  
1-4x continuous digital zoom  
PiP Scalable IR area on visual image  
Thermal Fusion

**FLIR E60bx**



Thermal image quality:  
320x240 pixels  
Thermal sensitivity: <0.045°C  
Spotmeter: 3  
3 boxes with min./max./average  
Built-in 3.1 Mpixels digital camera  
Non-radiometric IR-video recording  
Radiometric IR-video recording  
Non-radiometric IR-video streaming  
Delta temperature measurement  
Voice / text annotations  
MeterLink™  
Bluetooth® / WiFi  
1-4x continuous digital zoom  
PiP Scalable IR area on visual image  
Thermal Fusion  
Instant report



## A full product range

At FLIR Systems we realize that different users have different needs. Therefore we have developed a full product range of thermal imaging cameras. More advanced models contain more features and allow to do your work faster and more efficient. They are the ideal tools for the expert and professional users.

### Expert and professional models: better image quality

Just like in photography, having an image which is composed of more pixels means that the camera produces higher quality images. But there is more. A thermal imaging camera with 640 x 480 pixels has 307,200 temperature measurement points in one image which is four times more than a camera with 320 x 240 pixels and 76,800 temperature measurement points. When looking at the same target from the same distance, more pixels will cover the target. This will result in much better measurement accuracy.

### Thermal images, with different resolutions, of a wall

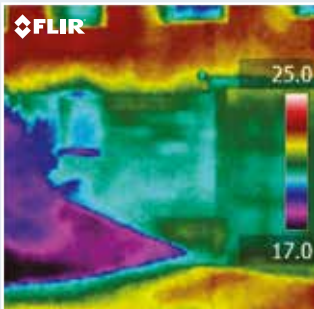


Image taken with 120 x 120 pixels resolution.

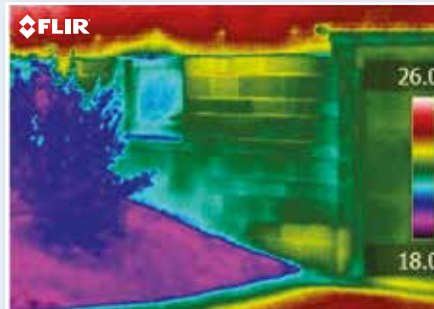


Image taken with 320 x 240 pixels resolution.

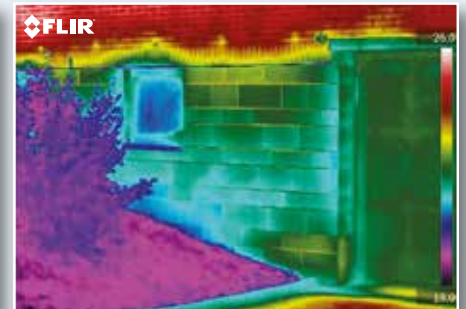


Image taken with 640 x 480 pixels resolution. The increased number of pixels will result in a much clearer picture where small details are very visible.

### Ergonomics

When you are an expert or professional and using your camera several hours per day you need an ergonomic tool. No matter where the area to be inspected is located, you need to be able to handle your camera in an easy, ergonomic way. This will not only increase your analysis capabilities in the field but it will also increase your productivity.



## Multi Spectral Dynamic Imaging (MSX)

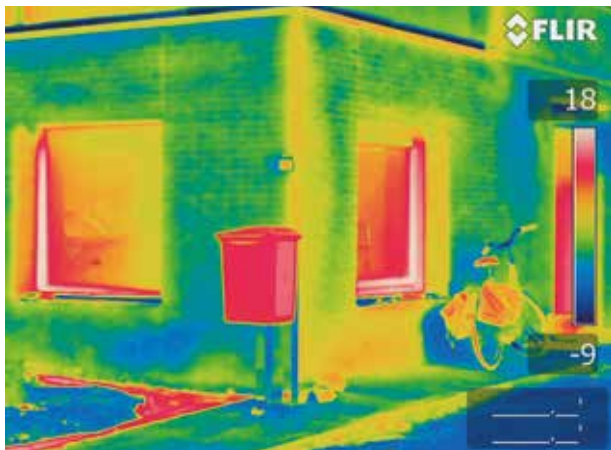
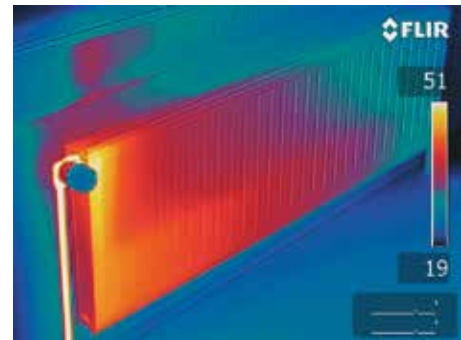
**A new, patent-pending fusion based on FLIR's unique onboard processor that provides extraordinary thermal image details in real time.**

- Real-time IR video enhanced with visible spectrum definition
- Exceptional thermal clarity to highlight exactly where the problem is
- Easier target identification without compromising radiometric data
- Quality so good, you won't need a separate digital photo for reports

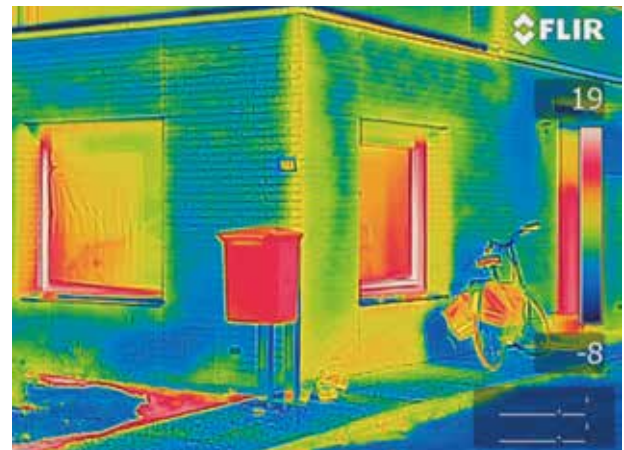
Unlike traditional thermal fusion that inserts an IR image into a visible-light picture, FLIR's new MSX embosses digital camera detail onto thermal video and stills.

### Instant Results:

- Sharper-looking thermal images
- Quicker target orientation
- Clutter-free reports
- Faster route to solutions



Thermal image of a building.



Thermal image of the same building, now using the MSX-setting. Note that more details are visible, making it easy to locate ventilation grids and see brick structure. The MSX feature gives depth to your thermal image.

## Image sketch

This new FLIR Systems feature allows to clearly indicate on a saved image the location of the problem area both on the thermal and the visual image. This can be done immediately on the touch screen of the camera. The indications you make on the thermal image will automatically appear in your report.



## Continuous auto-focus

A solution with two digital cameras allows for continuous autofocus of the thermal images. Continuous auto-focus makes the FLIRT640bx the first fully automatic thermal imaging camera on the market.







# FLIR thermal imaging cameras for the expert and professional users

expert and professional



FLIR T400bx-Series



FLIR T600bx-Series



FLIR B600-Series



### FLIR B250 & B335

The FLIR B250 and B335 take ergonomics to a new level. Thanks to a tiltable lens unit you are able to always hold the camera in a comfortable position.



### T400bx-Series

The FLIR T400bx-Series offers a good performance at an affordable price. Excellent ergonomics and easy communication make the FLIR T400bx-Series a truly user-friendly camera for the beginner and advanced user.



### FLIR T600bx-Series

The FLIR T600bx-Series is designed for the expert requiring the highest performance and the latest technology available. The cameras combine excellent ergonomics with superior image quality of 640 x 480 pixels IR resolution. The cameras are flexible and can meet your every need, and have extensive communication possibilities.



### FLIR B600-Series

The FLIR B600-Series is an IR-camera designed for the thermography expert having the camera as the number one tool. The B-series cameras offer a superior image quality, the highest sensitivity and accuracy as well as the widest array of possibilities available. All tailor made to fulfill the demand of the expert depending on an accurate and full featured instrument to perform the work.

# FLIR B250 / B335



## The choice of the advanced thermographer

The FLIR B-Series of portable thermal imaging cameras takes ergonomics, weight and ease-of-use to a new level. Usability is key: our engineers have translated user feedback on comfort and clarity into a series of comprehensive and innovative features. Furthermore, the FLIR B-Series has been specifically developed for building environments. It contains features like dewpoint and insulation alarms that will make the life of any building thermographer a lot easier.

320  
x  
240

### Up to 320 x 240 pixel resolution

The B-Series thermal image resolution ranges from 240 x 180 pixels to 320 x 240 pixels.\*



### Camera sensitivity

The thermal sensitivity in the FLIR B-Series ranges from 70 mK to < 50 mK.\*



### High quality visual camera

All models in the FLIR B-Series have an integrated 3.1 Mpixel digital camera. This makes observing and inspecting faster and easier.



### Panorama support

Take images in a sequence and automatically combine them to one large image using the FLIR software. The images can be shot in vertical or horizontal direction or in a combination of the two.



### Measurement range

Temperature measurement range -20°C to +120°C.



### Interchangeable infrared lenses

The B-Series features a standard 25° lens and optional 6°, 15°, 45° and 90° lenses.



### Flexible interfaces

The B-Series is equipped with standard video, USB outputs as well as a removable SD card.



### MPEG-4 video

Create visual and infrared non radiometric MPEG-4 video files.



### Radiometric IR video streaming

16 bit radiometric IR video can be streamed to a PC (via USB) running the FLIR software.\*



### Picture-in-Picture

Create an infrared overlay on your visual image. Scalable, moveable and resizable.



### Text and voice annotations

Text comments can be made from a pre-defined list or using the touch screen. A headset can be connected to make voice annotations.



### Sketch annotations

Use the touch screen as pen and paper to add sketch annotations.



### Image storage

FLIR uses a non proprietary radiometric JPEG image format that allows for post processing and report writing with Microsoft Word® based FLIR software.



### Touch screen

3.5" LCD touch screen plus stylus brings interactivity and user comfort to a new level.



### Measurement Modes

Measurement spots, area with auto hot/cold spot indication, isotherms,  $\Delta T$  calculation.



### Copy to USB

Transfer on board images or reports directly from the thermal imaging camera to a USB stick.



### Humidity Alarm/Insulation Alarm

The Relative Humidity Alarm alerts you to the areas where there is a risk of condensation. An Insulation Alarm shows the insulation performance of the building structure.

\* Features dependant on camera model, please check technical specifications for more details.



Connect to smartphone or tablet via Wi-Fi, using the FLIR Tools mobile app (Apple iOS and Android) for processing and sharing results as well as for remote control.



Multifunctional LCD touch screen allows sketching and marking directly on the screen.





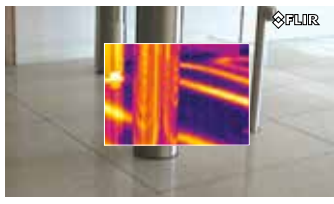
Multifunctional LCD touch screen allows quick and easy camera software menu handling.



High quality visual images.

## FLIR B250 / B335 Camera Model Comparison

FLIR B250	FLIR B335
	
Thermal image quality: 240x180 pixels	Thermal image quality: 320x240 pixels
70 mK NETD	< 50 mK NETD
2x continuous digital zoom	4x continuous digital zoom
Picture-in-Picture (scalable)	Picture-in-Picture (resizable/movable)
Panorama support	
1 Image marker	4 Image markers
	Delta T
	Instant reports



**NEW**

# FLIR T400bx-Series



## Excellent ergonomics and extensive communication possibilities

The FLIR T400bx-Series offers a good performance at an affordable price. Excellent ergonomics and easy communication makes the FLIR T400bx-Series a truly user-friendly camera for the beginner and advanced user. With extensive communication possibilities including Wi-Fi and MeterLink (Bluetooth). The latest technology integrated in the camera allows for fast image processing and storage.



### 320 x 240 pixel resolution

The T400bx-Series has a thermal image resolution of 320 x 240 pixels.



### Camera sensitivity

The FLIR T400bx-series has a thermal sensitivity of < 45 mK.



### High quality visual camera

Both models in the FLIR T400bx-Series have an integrated 3.1 Mpixel digital camera. This makes observing and inspecting faster and easier.



### Measurement range

The T400bx-Series can measure temperatures up to +650°C.



### Interchangeable infrared lenses

The T400bx-Series features a standard 25° lens and optional 6°, 15°, 45° and 90° lenses.



### Flexible interfaces

The T400bx-Series is equipped with standard video, USB outputs as well as a removable SD card.



### MPEG-4 video

Create visual and infrared non radiometric MPEG-4 video files.



### Thermal Fusion

Merges visual and thermal images to offer better analysis.



### Temperature sound, image alarms

Make surveying easier and faster.



### Picture-in-Picture

Create an infrared overlay on your visual image. Scalable, moveable and resizable.



### Text and voice annotations

Text comments can be made from a pre-defined list or using the touch screen. A headset can be connected to make voice annotations.



### Sketch annotations

Use the touch screen as pen and paper to add sketch annotations.



### Image sketch

Indicate problem areas directly on the thermal image.



### Radiometric IR video streaming

16 bit radiometric IR video can be streamed to a PC (via USB) running the FLIR R&D software.



### Image storage

FLIR uses a non proprietary radiometric JPEG image format that allows for post processing and report writing with Microsoft Word® based FLIR software.



### Touch screen

3.5" LCD touch screen brings interactivity and user comfort to a new level.



### Measurement Modes

Measurement spots, area with auto hot/cold spot indication, isotherms,  $\Delta T$  calculation.



### Humidity Alarm/Insulation Alarm

The Relative Humidity Alarm alerts you to the areas where there is a risk of condensation. An Insulation Alarm shows the insulation performance of the building structure.



### Copy to USB

Transfer on board images or reports directly from the thermal imaging camera to a USB stick.



### Instant reports

Create instant reports directly in camera, easily copy report to USB.



### Multi Spectral Dynamic Imaging (MSX)

The innovative MSX feature produces an image more rich in every detail than ever before.



### Compass

The direction in which the camera is looking is automatically added to every image.

*Features dependant on camera model, please check technical specifications for more details.*

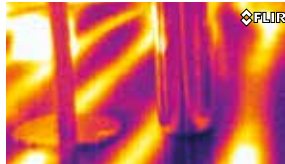


Connect to smartphone or tablet via Wi-Fi, using the FLIR Tools mobile app (Apple iOS and Android) for processing and sharing results as well as for remote control.

## Thermal Fusion



Visual image



Thermal image



Thermal Fusion image of a floor heating inspection.

## Multi Spectral Dynamic Imaging (MSX)



MSX allows seeing even more detail on the thermal image.

expert and professional

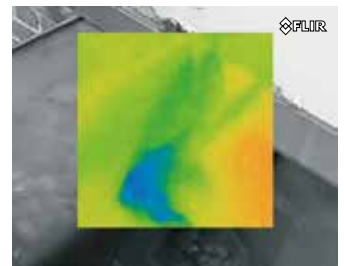


## Image sketch



Multifunctional LCD touch screen allows sketching and marking directly on the screen.

## Picture-in-Picture



## FLIR T400bx-Series camera model comparison

### FLIR T420bx



Temperature range:  
-20°C to +350°C

4x continuous digital zoom

### FLIR T440bx



Temperature range:  
-20°C to +650°C

8x continuous digital zoom

MSX

Image sketch on IR and visual

Live line profile

Compass

Measurement presets

## MeterLink



# FLIR T600bx-Series



State-of-the-art thermal imaging cameras that combine good ergonomics and flexibility with high image quality

The FLIRT600-Series offer a crisp thermal image of up to 640 x 480 pixels on which the smallest of details can be seen. The T600-Series is flexible and can meet your every need, and has extensive communication possibilities.



### Up to 640x480 pixel resolution

The high definition 640x480 pixels detector generates crisp and clear detailed images that are easy to interpret, resulting in reliable inspections with higher accuracy.



### High sensitivity

The T640bx allows you to see temperature differences as small as 0.035°C.



### Tiltable IR unit

The tiltable IR unit gives you great flexibility and allows you to work faster and in a comfortable position during your inspections.



### Large bright 4.3 inch LCD screen

The high quality LCD screen presents sharp and bright images also in outdoor environments.



### Viewfinder (T640bx)

The high-resolution viewfinder is ideal for outdoor use or when the LCD screen is not used.



### High quality visual camera

An integrated 5 megapixel visual camera generates crisp visual images in all conditions. Field of view adapts to IR lens.



### Laser Pointer

The position of the laser pointer is highlighted on the IR-image, which helps you associate the hot spot in the image with the physical target.



### Flexible interfaces

Easy access to Digital Video Interface, USB for connecting external devices, USB2 for PC communication and a direct connection to charge the battery inside the camera.



### Radiometric IR video streaming

16 bit radiometric IR video can be streamed to a PC (via USB) running the FLIR software.



### MPEG-4 video

Create visual and infrared non radiometric MPEG-4 video files.



### Picture-in-picture

Create an infrared overlay on your visual image. Adapts automatically to different lenses with different field of view. Moveable and resizable depending on camera model.



### Touch screen

The LCD touch screen brings interactivity and user comfort to a new level. In combination with the large backlit buttons and joystick control the T600bx-Series is very easy to use.



### Sketch annotations

Include a sketch with the thermal image of the inspected object, just draw it on the touch screen.



### Text and voice annotations

Text comments can be selected from a list. A Bluetooth headset can be connected to make voice annotations.



### Digital zoom

The FLIRT640bx is equipped with a 1-8x continuous digital zoom and the T600bx/T620bx with a 1-4x zoom.



### Humidity Alarm/Insulation Alarm

The Relative Humidity Alarm alerts you to the areas where there is a risk of condensation. An Insulation Alarm shows the insulation performance of the building structure. By inputting relevant values into the camera the areas that fail to fulfill requirements will appear as colored.



### FLIR Thermal Fusion

Merges visual and thermal images for better analysis.

## New features



### Multi Spectral Dynamic Imaging (MSX)

The innovative MSX feature produces an image more rich in every detail than ever before.



### Image sketch

Indicate problem areas directly on the thermal image.



### Continuous auto-focus

Continuous automatic focus on the object that you are inspecting.



### Built-in GPS

GPS allows to georeference thermal images to determine their geographic location.



### Compass

The direction in which the camera is looking is automatically added to every image.

*Features dependant on camera model, please check technical specifications for more details.*



Connect to smartphone or tablet via Wi-Fi, using the FLIRTools mobile app (Apple iOS and Android) for processing and sharing results as well as for remote control.



## FLIR T600bx-Series Model Comparison

FLIR T600bx	FLIR T620bx	FLIR T640bx
Thermal image quality: 480x360 pixels	Thermal image quality: 640x480 pixels	Thermal image quality: 640x480 pixels
Thermal sensitivity: <40 mk @ +30°C	Thermal sensitivity: <40 mk @ +30°C	Thermal sensitivity: <35 mk @ +30°C
Temperature range: -40°C up to +350°C	Temperature range: -40°C up to +650°C	Temperature range: -40°C up to +650°C
1-4x continuous, digital zoom	1-4x continuous, digital zoom	1-8x continuous, digital zoom
	GPS	GPS
	Instant Report	Instant Report
		MSX
		Image sketch on IR and visual
		Continuous auto-focus
		Viewfinder
		Live line profile
		Measurement presets

**NEW**

# FLIR B620 & FLIR B660



## Thermal imaging cameras designed for the expert.

A FLIR B620/660 camera is the perfect instrument for users who know the advantages that thermal imaging has to offer, and who rely on a thermal imaging camera at work. Whether you are a thermography consultant or a building professional the FLIR B620/660 thermal imaging cameras will help you trace anomalies invisible to the human eye.

640  
x  
480

### 640x480 pixel resolution

The FLIR B620/660 have a high resolution pixel detector of 640x480 pixels that allows more accuracy and shows more details at a longer distance.



### High sensitivity (B660)

< 30 mK thermal sensitivity captures the finest image details and temperature difference information.



### High quality visual camera

An integrated 3.2 megapixel visual camera for generating crisp visual images in all conditions.



### Contrast Optimizer (B660)

Automatic optimization of brightness and contrast adjustments to make it easier to make thermal analyzes of detailed objects.



### Panorama support

Take images in a sequence and automatically combine them to one large image using the FLIR Reporter software.



### Built-in GPS (B660)

GPS allows to georeference infrared images to determine its geographic location.



### Laser Pointer

Helps you associate the hot or cold spot in the IR image with the real physical target in the field.



### Flexible interfaces

Easy access to composite video connection, USB, FireWire, and a direct connection to charge the battery inside the camera.



### MPEG-4 video

Create visual and infrared non radiometric MPEG-4 video files.



### FLIR Thermal Fusion

Merges visual and infrared images to offer better analysis.



### Picture-in-picture

Create an infrared overlay on your visual image. Moveable and resizable.



### Automatic- and Manual focus, Digital zoom

Focus possibilities include; single shot auto focus, continuous auto focus, laser based (B660) or manual focus.



### Radiometric JPEG

FLIR uses a non proprietary radiometric JPEG image format that allows for post processing and report writing with Microsoft Word® based FLIR software.



### Text and voice annotations

Text comments can be uploaded through a wireless IrDa interface. A Bluetooth® wireless headset can be connected to make voice annotations which are stored with the image.



### Automatic- and Manual focus, Digital zoom

Focus possibilities include; single shot auto focus, continuous auto focus, laser based (B660) or manual focus.



### Tilttable viewfinder

The high-resolution viewfinder is tiltable and can be adapted to the individual user. It is ideal for outdoor use or when the LCD screen is not used.



### Large LCD screen

Super size 5.6" foldable high-quality LCD screen allows you to see the smallest details and temperature differences.



### Multi-angle handle with integrated direct access buttons

A turnable control grip allows you to use the camera in the most comfortable position. The buttons and joystick to control the camera are integrated in this handle.



### Programmable direct access buttons

For increased flexibility the operator can program buttons located on the top of the camera for direct access to favourite functions.



### Humidity Alarm / Insulation Alarm

The Relative Humidity Alarm alerts you to the areas where there is a risk of condensation. An Insulation Alarm shows the insulation performance of the building structure.



METER LINK  
Bluetooth



## Relative humidity alarm



The relative humidity alarm alerts you to the areas where there is a risk of condensation. In the image below the area at risk is indicated as blue color.

## Insulation alarm



The insulation alarm shows where the areas below or above a set temperature are by making them appear in a different color.



Connect to smartphone or tablet via Wi-Fi, using the FLIR Tools mobile app (Apple iOS and Android) for processing and sharing results as well as for remote control.

expert and professional



## High resolution



## FLIR B-Series Camera Model Comparison

### FLIR B620



<40 mK sensitivity, accuracy +/- 2%

Standard 24° or 45° lens

2x continuous digital zoom

Standard measurement functions

Laser Pointer

USB connection

### FLIR B660



<30 mK sensitivity, accuracy +/- 1%

Wide lens choice

8x continuous digital zoom

Extended measurement functions

Advanced Laser Pointer

USB and Firewire connection

Set temperature alarms

Radiometric and non-radiometric video recording

Sequence recording in camera

Built-in GPS

Contrast Optimizer

## Contrast optimizer

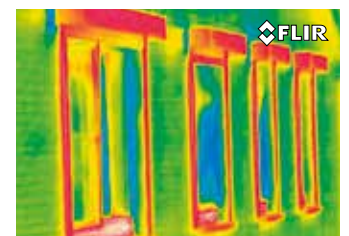


Basic thermal image.



Thermal image enhanced with the Contrast Optimizer function.

Visual image



Thermal image



Thermal Fusion image

Thermal inspection reveals energy loss.

# Software

## Turning tools into solutions

At FLIR Systems, we recognize that our job is to go beyond just producing the best possible thermal imaging camera systems. We are committed to enabling all users of our thermal imaging camera systems to work more efficiently and productively by providing them with the most professional camera-software combination.

Our team of committed specialists are constantly developing new, better and more user-friendly software packages to satisfy the most demanding thermal imaging professionals. All software allows fast, detailed and accurate analysis and evaluation of thermal inspections.



## FLIR Reporter

### Creating compelling and professional reports

FLIR Reporter is a powerful software for creating compelling and professional reports with powerful new TripleFusion, Picture-in-Picture, and the latest Microsoft operating system and Word compatibility.

#### Flexible report design and layout

- Fully integrated with Microsoft Word™
- Powerful temperature analysis
- Wizard-guided report generation
- TripleFusion Picture-in-Picture (movable, sizable, scalable)
- Automatic report generation by drag-and-drop
- Predictive trending functionality
- Automatic link to Google™ Maps for images with GPS coordinates



*FLIR Reporter allows for fast and easy generation of professional inspection reports.*

#### TripleFusion Picture-in-Picture capabilities

FLIR Reporter's Picture-in-Picture (PIP) features to make your reporting easy and efficient. Simply download thermal and visible images to Reporter. Easy-to-use dialog boxes and drag-and-drop features help you superimpose a smaller thermal image inside the visible light photo.

#### Automatic report generation

With FLIR Reporter it's easy to create customized reports. The ReportWizard guides you step-by-step to make a professional inspection report.

#### Compatible with GPS

For FLIR customers having built-in GPS capability with their cameras, FLIR Reporter provides an automatic link to Google™ Maps for images with GPS coordinates.

#### Predictive trending functionality

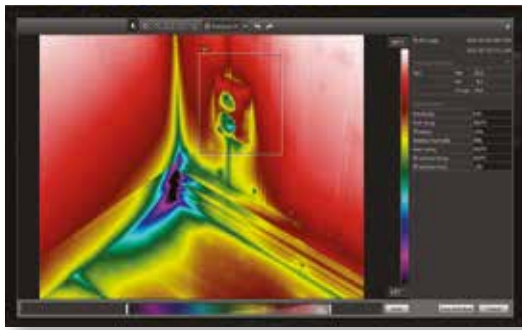
Trending is a powerful tool to help you track thermal information relating to your thermal surveys. Armed with this information you can better determine when maintenance procedures need to be performed.

#### More advanced features

FLIR Reporter includes numerous advanced features, including: digital zoom, color palette changes, play back of voice comments recorded in the field. Automate calculations with the powerful formula tool and the time-saving one-click  $\Delta T$  function. Instant report summary creation with the Summary Table tool. Histogram and line profile graph features to facilitate more advanced analysis.

### FLIR Reporter Key features:

- Flexible report page design and layout for customized reports
- Use quick insert function to easily create custom report pages
- Fully integrated with standard Microsoft Word
- Generates reports in standard MS Office format and PDF-format
- Powerful temperature analysis
- Triple Fusion Picture-in-Picture (movable, sizable, scalable)
- Rapid report manager supporting automatic report generation by drag-and-drop
- Trending functionality
- Spell check
- Automatic summary table for the report
- Automatic link to Google™ Maps for images with GPS coordinates
- Fine tune images and make full temperature analysis directly in Microsoft Word
- Create your own formulas including measurement values from images
- Play radiometric sequences directly in the report
- Search functionality to quickly finding images for your report
- Panorama tool for combining several images to a larger image
- Windows 7, 32 and 64-bit
- Support for MeterLink™ data
- \*.docx compatibility
- Grid function



## FLIR Tools: Software with every thermal imaging camera

FLIR Systems has since long realized the importance of making inspection reports. That is why every FLIR Systems thermal imaging camera is coming with software that allows users to organize and analyze the images from their thermal imaging cameras and present them in a report. The software allows for adjusting image settings such as color palette, level and span.

Users that want more flexibility and more analysis tools can choose for FLIR Reporter.

## FLIR Tools Mobile

### FLIR Tools Mobile App for Android, iPad, iPhone, and iPod Touch

FLIR leads the way with forward-thinking Wi-Fi connectivity to Android and to iPad, iPhone and iPod Touch devices. Just download the new FLIR Tools Mobile app from Android Market or from the App Store and you're ready to see, capture and import thermal images as well as to stream and capture live video from select FLIR cameras.

FLIR Tools Mobile can also be used for remote control of the camera.

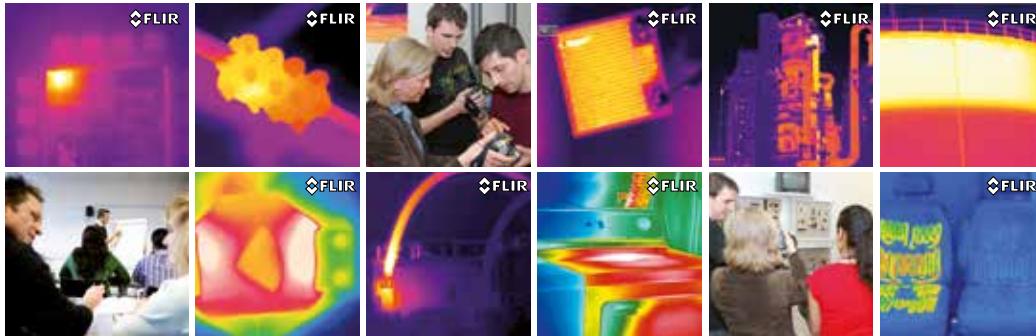


# ITC

## FLIR Infrared Training Center



The Infrared Training Center (ITC) offers the world's leading infrared training and thermographer certification programs.



Although all our cameras are designed for easy installation and operation, there is a lot more to thermal imaging than just knowing how to handle the camera. As the leading company for thermal imaging technology, we like to share our knowledge with our customers and other interested parties.

We therefore organize regular courses and seminars. We also organize in-company training on request, so that you, or your staff, can gain familiarity with thermal imaging and its applications.

The ITC not only welcomes FLIR Systems customers but also users of other brands of cameras. In fact, anyone who wants to learn more about thermal imaging for any applications, before deciding to purchase a camera, is also invited.

The mission of the ITC is to make our customers and partners successful by enhancing their knowledge of IR technology, thermal imaging products, and relevant applications. The ITC offers a portfolio of courses that presents the right mix of theoretical and practical content to help professionals quickly apply thermal imaging technology to real life applications.

All our instructors are experienced thermal imaging specialists. Not only do they have a profound theoretical knowledge but they also have practical experience with numerous applications. For our customers, this means that attending one of the ITC's courses will give them a real hands-on learning experience.

**Follow one of our courses and become a thermal imaging expert.**



*Each ITC course is a perfect combination of theoretical fundamentals and practical exercises. It guarantees participants a real hands-on learning experience.*

# After Sales

## FLIR After Sales

At FLIR Systems, building a relationship with a customer takes more than just selling a thermal imaging camera. After the camera has been delivered, FLIR Systems is there to help meet your needs.



Once purchased, thermal imaging cameras are vital pieces of equipment. To keep them running at all times, we operate a worldwide service network with subsidiaries in Belgium, China, France, Germany, Hong Kong, Italy, the Netherlands, Sweden, United Arab Emirates, the United Kingdom and the USA.

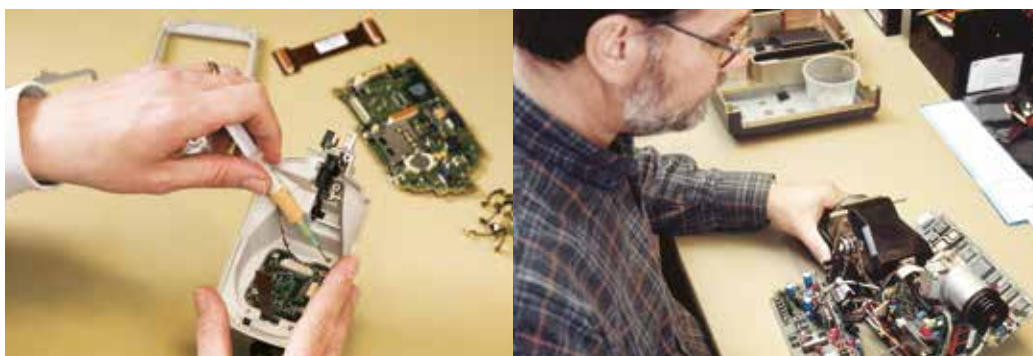
If there should be a problem with one of our camera systems, these local service centers have all the know-how and equipment to solve it within the shortest possible time. Local camera service gives you the assurance that your system will be ready for use again within an extremely short timeframe.

Buying a thermal imaging camera is a long-term investment. You need a reliable supplier who can provide you with support over a long period of time.

Our service personnel regularly follows training programs at our production facilities in Sweden or the USA. Not only to learn about the technical aspects of the products, but also to familiarize themselves with your individual customer requirements and the latest applications.

Different types of maintenance contracts can be offered to make sure that, whatever happens, your thermal imaging camera is always available for use.

**CUSTOMER CARE is not just a slogan.  
We write it in capital letters at FLIR.**



# Accessories

Flexible systems that meet your changing needs

FLIR offers a wide variety of accessories to tailor your camera to your needs.



In today's fast-changing environment, requirements for purchased capital equipment can change from year to year or from project to project. Things that are vital today can be redundant tomorrow.

That makes it important for the equipment in which you invest to be flexible enough to meet the ever-changing needs of your applications. No other thermal imaging camera manufacturer offers a wider range of accessories than FLIR Systems.

Hundreds of accessories are available to customize our cameras for a wide variety of imaging and measurement applications.

From a comprehensive range of lenses, through LCD screens to remote control devices, everything is available to tailor your camera to your own, specific application.



A wide variety of accessories is available for every FLIR thermal camera



Extra Battery



15° lens



45° lens



Car charger



Battery charger

# FLIR i3 / i5 / i7

## Technical specifications

### Camera specific

	FLIR i3	FLIR i5	FLIR i7
Field of view/min focus distance	12.5° x 12.5°/0.6 m	21° x 21°/0.6 m	29° x 29°/0.6 m
Thermal sensitivity	0.15°C	0.10°C	0.10°C
IR Resolution	60 x 60 pixels	100 x 100 pixels	140 x 140 pixels
Measurement modes	Center spot	Center spot	Center Spot, box with max./min. temp., isotherms above/below selected temperature interval

### General

Imaging performance	
Spectral range	7.5 - 13 $\mu$ m
Spatial resolution (IFOV)	3.7 mrad
Image Frequency	9 Hz
Focus	Fixed
Focal Plane Array (FPA)	Uncooled microbolometer
Image Presentation	
Display	2.8" color LCD
Measurement	
Object temperature range	-20°C to +250°C
Accuracy	$\pm$ 2 °C or $\pm$ 2% of reading
Measurement analysis	
Emissivity correction	Variable from 0.1 to 1.0 or selected from list of materials
Reflected apparent temperature correction	Automatic, based on input of reflected temperature
Setup	
Color palettes	Iron, Rainbow and Black/White
Set-up controls	Local adaptation of units, language, date and time formats; automatic shutdown
Image Storage	
Type	MiniSD card
File format	Standard JPEG - 14 bit measurement data included
Power	
Battery Type	Li-Ion rechargeable
Battery operating time	5 hours , display shows battery status
Charging system	In camera, AC adaptor; 3 hours to 90% capacity
AC operation	AC adaptor 90-260 VAC input
Power management	Automatic shutdown (user selectable)
Adaptor voltage	5 VDC out
Environmental specifications	
Operating temperature range	0°C to +50°C
Storage temperature range	-40°C to +70°C
Humidity	Operating and storage IEC 60068-2-30/24 h 95% relative humidity
Shock	25G, IEC 60068-2-29
Vibration	2G, IEC 60068-2-6
Drop	2 m
Encapsulation	Camera housing and lens: IP43
Physical characteristics	
Dimensions	223 x 79 x 83 mm
Weight	365g, including battery
Shipping size	120 x 400 x 320 mm
Shipping weight	2.8 kg
Standard package	



\* After product registration on [www.flir.com](http://www.flir.com)

# FLIR Ebx-Series

## Technical specifications

### Camera specific



FLIR E30bx

FLIR E40bx

FLIR E50bx

FLIR E60bx

	FLIR E30bx	FLIR E40bx	FLIR E50bx	FLIR E60bx
<b>Imaging Performance</b>				
IR resolution	160 × 120 pixels	160 × 120 pixels	240 × 180 pixels	320 × 240 pixels
Spatial resolution	2.72 mrad	2.72 mrad	1.82 mrad	1.36 mrad
Thermal sensitivity	< 0.1 °C	< 0.045 °C	< 0.045 °C	< 0.045 °C
Zoom	N/A	1-2x continuous digital zoom	1-4x continuous digital zoom	1-4x continuous digital zoom
<b>Image presentation</b>				
Picture in Picture	N/A	IR area on visual image	Scalable IR area on visual image	Scalable IR area on visual image
Thermal Fusion	N/A	N/A	Yes	Yes
Image modes	IR image, visual image, thumbnail gallery	IR image, visual image, thumbnail gallery	IR image, visual image, thermal fusion, picture-in-picture, thumbnail gallery	IR image, visual image, thermal fusion, picture-in-picture, thumbnail gallery
<b>Measurement analysis</b>				
Spotmeter	1	3	3	3
Area	1 box with min./max./average	3 boxes with min./max./average	3 boxes with min./max./average	3 boxes with min./max./average
Difference temperature	N/A	Delta temperature between measurement functions or reference temperature	Delta temperature between measurement functions or reference temperature	Delta temperature between measurement functions or reference temperature
<b>Reporting</b>				
Instant report	N/A	N/A	N/A	Yes
<b>Digital camera</b>				
Built-in digital camera	2 Mpixels, and one LED light	3.1 Mpixels, and one LED light	3.1 Mpixels, and one LED light	3.1 Mpixels, and one LED light
<b>Image annotations</b>				
Voice	N/A	60 seconds via Bluetooth®	60 seconds via Bluetooth®	60 seconds via Bluetooth®
Text	N/A	Text from predefined list or soft keyboard on touch screen	Text from predefined list or soft keyboard on touch screen	Text from predefined list or soft keyboard on touch screen
External sensors	N/A	Possible to connect, via Bluetooth, Extech Moisture meter M0297 or Extech clamp meter EX845	Possible to connect, via Bluetooth, Extech Moisture meter M0297 or Extech clamp meter EX845	Possible to connect, via Bluetooth, Extech Moisture meter M0297 or Extech clamp meter EX845
<b>Data communication interfaces</b>				
Bluetooth®, WiFi	N/A	Yes	Yes	Yes
<b>Video streaming/recording</b>				
Non-radiometric IR-video recording	N/A	MPEG4 to memory card	MPEG4 to memory card	MPEG4 to memory card
Radiometric IR-video streaming	N/A	Full dynamic to PC using USB	Full dynamic to PC using USB	Full dynamic to PC using USB
Non-radiometric IR-video streaming	N/A	Uncompressed colorized video using USB	Uncompressed colorized video using USB	Uncompressed colorized video using USB



## General

Imaging Performance	
FOV / Minimum focus distance	25° × 19° / 0.4 m
Spectral range	7.5–13 µm
Image frequency	60 Hz
Focus	Manual
Focal Plane Array (FPA)	Uncooled microbolometer
Image presentation	
Display	Built-in 3.5" LCD touch screen, 320 × 240 pixels
Measurement	
Object temperature range	-20 °C to +120 °C
Accuracy	±2 °C or ±2% of reading
Measurement analysis	
Automatic hot/cold detection	Auto hot or cold spotmeter markers within area
Emissivity correction	Variable from 0.01 to 1.0 or selected from list of materials
Measurement corrections	Reflected temperature, optics transmission and atmospheric transmission
Humidity alarm	1 humidity alarm including dew point alarm
Insulation alarm	1 insulation alarm
Isotherm	Detect high/low temperature/interval
Set-up	
Image controls	Palettes (Arctic, Gray, Iron, Lava, Rainbow and Rainbow HC), image adjustment (auto/manual)
Set-up controls	Local adaptation of units, language, date and time formats; automatic shutdown , display intensity
Laser pointer	
Laser alignment	Position is displayed on the IR image
Image storage	
Format	Standard JPEG - including measurement data on SD memory card
Type	IR/visual images; simultaneous storage of visual and IR images
Power	
Battery type	Lithium-Ion (field replaceable) - 4 hours operating time
Charging system	In camera, AC adaptor, 2-bay charger or 12 V from a vehicle
Power management	Automatic shutdown and sleep mode (user selectable)
AC operation	AC adaptor, 90-260 V AC
Adaptor voltage	12 V output to camera
Environmental specifications	
Operating temperature range	-15 to +50 °C
Storage temperature range	-40 to +70 °C
Humidity	IEC 60068-2-30/24 h 95% relative humidity +25 °C to +40 °C / 2 cycles
Shock / Vibration	25 g (IEC 60068-2-29) / 2 g (IEC 60068-2-6)
Drop	2 m
Encapsulation	IP 54 (IEC 60529)
Data communication interfaces	
Interfaces	USB-mini, USB-A, Composite video
USB	USB-A: Connect external USB device - USB-mini-B: Data transfer to and from PC / Streaming MPEG 4
Physical characteristics	
Camera weight, incl. battery	0.825 kg
Camera size (L × W × H)	246 × 97 × 184 mm
Shipping size	560 x 370 x 190 mm
Shipping weight	5.3 kg
Standard package	
FLIR E30bx, FLIR E40bx, FLIR E50bx or FLIR E60bx: Hard transport case, Thermal imaging camera with lens, Battery, Hand strap, Calibration certificate, FLIR Tools™ PC software CD-ROM, Memory card, Lens cap, Power supply incl. multiplugs, Printed Getting Started Guide, Printed Important Information Guide, USB cable, User documentation CD-ROM, Video cable, Warranty extension card or Registration card	



\* After product registration on [www.flir.com](http://www.flir.com)

# FLIR B250 / B335

## Technical specifications

### Camera specific



	FLIR B250	FLIR B335
<b>Imaging performance</b>		
Thermal sensitivity/NETD	70 mK at 30°C	50 mK at 30°C
IR resolution	240 × 180 pixels	320 × 240 pixels
Spatial resolution (IFOV)	1.82 mrad - 1.36 mrad	1.36 mrad
Zoom	1–2× continuous, digital zoom, including panning	1–4× continuous, digital zoom, including panning
<b>Image presentation</b>		
Picture in Picture	Scalable IR area on visual image	Resizable and movable IR area on visual image
<b>Measurement analysis</b>		
Difference temperature	N/A	Delta temperature between measurement functions or reference temperature
<b>Image storage</b>		
Panorama	For creating panorama images	N/A
<b>Measurement analysis</b>		
Profile	N/A	1 live line
<b>Image annotations</b>		
Image marker	On IR or visual image	4 on IR or visual image

### General

<b>Imaging Performance</b>	
Field of view (FOV) / Minimum focus distance	25° × 19° / 0.4 m
Spectral range	7.5 - 13 μm
Spatial resolution (IFOV)	1.82 mrad for B250 - 1.36 mrad for B335
Image frequency	9 Hz or 30 Hz
Focus	Automatic or manual
Focal Plane Array (FPA)	Uncooled microbolometer
<b>Image presentation</b>	
Display	Built-in touch screen, 3.5" color LCD, 320 x 240 pixels
Image modes	IR image, Visual image, Picture in Picture, Thumbnail gallery
<b>Measurement</b>	
Accuracy	±2 °C or 2% of reading
Object temperature range	-20 °C to +120 °C
<b>Measurement analysis</b>	
Spotmeter	5
Area	5 boxes with max./min./average
Isotherm	Detect high/low temperature/interval
Humidity alarm	1 humidity alarm including dew point alarm
Insulation alarm	1 insulation alarm
Automatic hot / cold detection	Auto hot or cold spotmeter markers within area
Emissivity correction	Variable from 0.1 to 1.0 or selected from list of materials
Measurement corrections	Reflected temperature, optics transmission and atmospheric transmission
External optics/windows correction	Automatic, based on inputs of optics/window transmission and temperature
<b>Setup</b>	
Color palettes	BW, BW inv, Iron, Rain, Rain HC & Bluered
Set-up controls	Local adaptation of units, language, date and time formats; automatic shutdown, display intensity



\* After product registration on [www.flir.com](http://www.flir.com)

Image storage	
Type	SD memory card
Format	Standard JPEG - 14 bit measurement data included
Modes	IR/visual images, simultaneous storage of IR and visual images
Image annotations	
Text	Text from predefined list or soft keyboard on touch screen
MeterLink	Connect Extech Clamp Meter EX845 or Moisture Meter M0297 via Bluetooth
Sketch	From touch screen
Voice	60 seconds
Digital camera	
Built-in digital camera	3.1 Mpixel (2048 × 1536 pixels), and LED lights
Laser Pointer	
Laser	Semiconductor AlGaInP diode laser, Class 2
Laser alignment	Position is displayed automatically on the IR image
Video streaming	
Radiometric IR video streaming	Full dynamic to PC using USB
Non-radiometric IR video streaming	MPEG-4 to PC using USB
Power System	
Battery time	Rechargeable Lithium-ion battery, field replaceable
Battery operating time	4 hours
Charging system	In camera, AC adapter, 2-bay charger or 12 V from a vehicle
Power management	Automatic shutdown (user selectable)
AC operation	AC adapter, 100-240 V AC, 50/60 Hz
Adaptor voltage	12 V output to camera
Environmental specifications	
Operating temperature range	-15 °C to +50 °C
Storage temperature range	-40 °C to +70 °C
Humidity (operating and storage)	IEC 68-2-30/24 h 95% relative humidity +25 °C to +40 °C
Shock	25 g (IEC 60068-2-29)
Vibration	2 g (IEC 60068-2-6)
Encapsulation	IP 54 (IEC 60529)
Interfaces	
USB-A	Connect external USB device (copy to memory stick)
USB Mini-B	Data transfer to and from PC / streaming MPEG-4
Composite video	PAL or NTSC
Headset connection	Yes
WiFi	Connects directly to Ipad/Iphone for image transfer or via local network
Physical characteristics	
Camera weight, incl. battery	0.88 kg
Camera size (L × W × H)	106 × 201 × 125 mm
Shipping size	180 x 500 x 360 mm
Shipping weight	5.6 kg
Standard package	
FLIR B250 or FLIR B335: Hard transport case, Thermal imaging camera with lens, Battery, Battery charger, Bluetooth® USB micro adapter, Calibration certificate, FLIR Tools™ PC software CD-ROM, Headset, Mains cable, Memory card with adaptor, Power supply, Printed Getting Started Guide, Sunshield, USB cable, User documentation CD-ROM, Video cable, Warranty extension card or Registration card	



**NEW**

# FLIR T400bx-Series

## Technical specifications

### Camera specific



	FLIR T420bx	FLIR T440bx
<b>Imaging performance</b>		
Zoom	1–4× continuous, digital zoom, including panning	1–8× continuous, digital zoom, including panning
<b>Measurement</b>		
Object temperature range	–20°C to +350°C in 2 ranges: –20°C to +120°C or 0°C to +350°C	–20°C to +650°C in 3 ranges: –20°C to +120°C or 0°C to +350°C +200°C to +650°C
<b>Image presentation</b>		
MSX	N/A	IR image with MSX
Image sketch	N/A	On IR and visual image
<b>Image annotations</b>		
Compass	N/A	Camera direction automatically added to every image

### General

<b>Imaging Performance</b>	
Thermal sensitivity/NETD	<45 mK at 30°C
IR resolution	320 × 240 pixels
Field of view (FOV) / Minimum focus distance	25° × 19° / 0.4 m
Spectral range	7.5 - 13 μm
Spatial resolution (IFOV)	1.36 mrad
Image frequency	60 Hz
Focus	Automatic (one shot) or manual
Focal Plane Array (FPA)	Uncooled microbolometer
<b>Image presentation</b>	
Picture in Picture	Scalable IR area on visual image
Display	Built-in touch screen, 3.5" color LCD, 320 x 240 pixels
Image modes	IR image, visual image, thermal fusion, picture in picture, thumbnail gallery
Thermal fusion	IR image shown above, below or within temp interval on visual image
<b>Measurement</b>	
Accuracy	±2°C or ±2% of reading
<b>Measurement analysis</b>	
Difference temperature	Delta temperature between measurement functions or reference temperature
Spotmeter	5
Area	5 boxes with max./min./average
Isotherm	Detect high/low temperature/interval
Automatic hot / cold detection	Auto hot or cold spotmeter markers within area
Emissivity correction	Variable from 0.01 to 1.0 or selected from list of materials
Measurement corrections	Reflected temperature, optics transmission and atmospheric transmission
External optics/windows correction	Automatic, based on inputs of optics/window transmission and temperature
Measurement function alarm	Audible/visible alarms (above/below) on any selected measurement function
Humidity alarm	1 humidity alarm, including dew point alarm
Insulation alarm	1 insulation alarm
<b>Setup</b>	
Color palettes	Arctic, Gray, Iron, Lava, Rainbow and Rainbow HC
Set-up commands	User programmable button, local adaptation of units, language, date and time formats
<b>Storage of images</b>	
Image storage	Standard JPEG - including measurement data, on memory card
Image storage mode	IR/visual images, simultaneous storage of IR and visual images
Periodic image storage	7 seconds to 24 hours (IR) 14 seconds to 24 hours (IR and visual)

Image annotations	
Voice	60 seconds (via Bluetooth)
Text	Text from predefined list or soft keyboard on touch screen
MeterLink	Connect Extech Clamp Meter EX845 or Moisture Meter MO297 via Bluetooth
Sketch	From touch screen
Report generation	- Instant Report (.pdf file) in camera including IR and visual images - Separate PC software with extensive report generation
Digital camera	
Built-in digital camera	3.1 Mpixel (2048 × 1536 pixels), and LED light
Digital camera, FOV	Adapts to the IR lens
Built-in digital lens data	FOV 53° x 41°
Laser Pointer	
Laser	Semiconductor AlGaInP diode laser, Class 2, activated by dedicated button
Laser alignment	Position is displayed automatically on the IR image
Video streaming	
Non-radiometric IR video recording	MPEG4 to memory card
Radiometric IR video streaming	Full dynamic to PC using USB or Wi-Fi
Non-radiometric IR video streaming	Uncompressed colorized video using USB MPEG-4 using Wi-Fi
Power System	
Battery time	Rechargeable Lithium-ion battery, field replaceable
Battery operating time	4 hours
Charging system	In camera, AC adaptor, 2-bay charger or 12 V from a vehicle
Power management	Automatic shutdown and sleep mode (user selectable)
Environmental specifications	
Operating temperature range	-15 °C to +50 °C
Storage temperature range	-40 °C to +70 °C
Humidity (operating and storage)	IEC 60068-2-30/24 h 95% relative humidity +25 °C to +40 °C
EMC	- ETSI EN 301 489-1 (radio) - ETSI EN 301 489-17 - EN 61000-6-2 (immunity) - EN 61000-6-3 (Emission) - FCC 47 CFR Part 15 B (Emission) - ICES-003
Radio spectrum	-ETSI EN 300 328 -FCC Part 15.247 - RSS-210
Bump	25 g (IEC 60068-2-29)
Vibration	2 g (IEC 60068-2-6)
Encapsulation	IP 54 (IEC 60529)
Safety	EN/UL/CSA/PSE 60950-1
Data communication interfaces	
Interfaces	USB-mini, USB-A, Bluetooth, Wi-Fi, composite video
USB	USB-A: Connect external USB device (copy to memory stick) USB Mini-B: Data transfer to and from PC/streaming
Bluetooth	Communication with headset and external sensors
Wi-Fi	Connects directly to smart phones or tablet PCs for image transfer or via local network
Radio	
Wi-Fi	Standard: 802.11 b/g Frequency range: 2412-2462 MHz Max output power: 15 dBm
Bluetooth	Frequency range: 2402-2480 MHz
Antenna	Internal
Physical characteristics	
Camera weight, incl. battery	0.88 kg
Camera size (L × W × H)	106 × 201 × 125 mm
Shipping size	180 x 500 x 360 mm
Shipping weight	5.6 kg
Tripod	UNC 1/4" - 20 (adaptor needed)
Standard package	
FLIR T420bx, T440bx: Hard transport case, Thermal imaging camera with lens, Battery, Battery charger, Calibration certificate, FLIR Tools™ PC software CD-ROM, Headset, Memory card with adaptor, Power supply incl. multi-plugs, Printed Getting Started Guide, Sunshield, USB cable, User documentation CD-ROM, Video cable, Warranty extension card or Registration card	



\* After product registration on [www.flir.com](http://www.flir.com)

**NEW  
FEATURES**

# FLIR T600bx-Series

## Technical specifications

### Camera specific



	FLIR T600bx	FLIR T620bx	FLIR T640bx
<b>Imaging performance</b>			
Resolution	480x360 pixels	640x480 pixels	640x480 pixels
Spatial resolution	0.91 mrad for 25° lens 0.55 mrad for 15° lens 1.64 mrad for 45° lens	0.68 mrad for 25° lens 0.41 mrad for 15° lens 1.23 mrad for 45° lens	0.68 mrad for 25° lens 0.41 mrad for 15° lens 1.23 mrad for 45° lens
Thermal sensitivity (at 30 °C)	<40 mK @ 30 °C	<40 mK @ 30 °C	<35 mK @ 30 °C
Digital zoom	Direct access, 1-4x continuous	Direct access, 1-4x continuous	Direct access, 1-8x continuous
Focus	Automatic (one shot) or manual	Automatic (one shot) or manual	Continuous, one shot or manual
<b>Measurement</b>			
Temperature range, standard	-40 °C to +150 °C +100 °C to +350 °C	-40 °C to +150 °C +100 °C to +650 °C	-40 °C to +150 °C +100 °C to +650 °C
<b>Image presentation</b>			
MSX	N/A	N/A	IR image with MSX
Viewfinder	N/A	N/A	800x480 pixels
<b>Image annotations</b>			
Image sketch	N/A	N/A	On IR and visual image
Instant Report	N/A	Yes	Yes
<b>Measurement analysis</b>			
Line profile function	N/A	N/A	Live profile, H/V-direction
Measurement presets	N/A	N/A	Add preset measurement set up by the press of one button
<b>Geographic Information System</b>			
Built-in GPS	N/A	Location data automatically added to every image for referencing on WEB maps	Location data automatically added to every image for referencing on WEB maps

### General

<b>Imaging performance</b>	
Field of View (FOV) / minimum focus distance	25° x 19° / 0.25 m 15° x 11° / 0.5 m 45° x 34° / 0.15 m lens needs to be specified when ordering
Focal Plane array (FPA)	Uncooled microbolometer
Spectral range	7.85 to 14 μm
Image frequency	30 Hz
<b>Image presentation</b>	
Display	4.3" superbright touchscreen LCD 800x480 pixels
Image modes	IR-image with selected color scale, Full color visual, Picture in Picture (Resizable and movable IR-area), Thermal Fusion (Threshold above, below and interval), thumbnail gallery
Manual image adjustments	Level/span/max/min
Automatic image adjustments, continuous or manual activation	Standard or based on histogram from image content
Automatic image adjustment with locked scale	Lock max, min or span



\* After product registration on [www.flir.com](http://www.flir.com)

## General

<b>Measurement</b>	
Accuracy	± 2 °C or ± 2% of reading
<b>Measurement analysis</b>	
Spotmeter	10
Area	5 Max/Min/Average value within box or circle
Automatic hot/cold detection	Max/Min temp. value and position shown within box, circle or on a line
Isotherm	Detect high/low temperature/interval
Humidity alarm	1 humidity alarm including dew point alarm
Insulation alarm	1 insulation alarm
Difference temperature	Difference between any two measurement functions or any measurement function and a reference temperature
Reference temperature function	Manually set
Emissivity correction	Variable from 0.01 to 1.0 or selected from materials list
Measurement corrections	Reflected temperature, optics transmission and atmospheric transmission
External windows correction	Automatic based on inputs of window temperature and transmission
<b>Set-up</b>	
Image controls	Palettes (Arctic, Gray, Iron, Lava, Rainbow and Rainbow HC), image adjustment (auto/manual)
Set-up controls	Local adaptation of units, language, date and time formats; automatic shutdown, display intensity
Configure information to be shown in image	✓
Programmable button	✓
<b>Image storage</b>	
Type	IR/visual images; simultaneous storage of visual and IR images
Format	Standard JPEG - including measurement data on SD memory card
Periodic image storage	7 seconds to 24 hours (IR) 14 seconds to 24 hours (IR and visual)
<b>Digital camera</b>	
Digital	5 Mpixel incl. lamps
<b>Laser LocatIR</b>	
Laser	Semiconductor AlGaInP diode laser, Class 2 - position is displayed on the IR image
Laser alignment	Laser position shown on IR-image
<b>Image annotation</b>	
Voice	60 seconds via Bluetooth® stored with the image
Text	Text from predefined list or soft keyboard on touch screen
Sketch	A sketch drawn on touch screen is automatically saved with image
Meterlink	Wireless connection to: Extech Moisture meter MO297 or Extech clamp meter EX845
<b>Image presentation</b>	
Compass	Camera direction automatically added to every image
<b>Video streaming /recording</b>	
Radiometric IR video streaming	Full dynamic to PC using Wi-Fi, uncompressed colorized video using USB
Non radiometric IR-video streaming	MPEG 4 streaming to PC using USB
Video recording in camera	Non-radiometric IR video/visual video, MPEG4 to SD-card.
WiFi	Wireless streaming of non-radiometric IR-video, MPEG4
<b>Update of camera</b>	
Automatic update of camera to latest version	Automatic update of camera from PC running FLIR Tools
<b>Data communication interfaces</b>	
Interfaces	USB-mini, USB-A, Bluetooth®, WiFi, DVI video
Bluetooth®	Communication with smart phone, PC tablet, headset and external sensors
USB	USB-A: Connect external USB device - USB-mini-B: Data transfer to and from PC / Streaming MPEG 4
WiFi	Connects directly to smart phones or tablet PCs for image transfer or via local network
<b>Power</b>	
Battery type	Lithium-Ion (field replaceable)
Battery operating time	> 2.5 hours at 25°
Charging system	In camera, AC adaptor, 2-bay charger or 12 V from a vehicle
Power management	Automatic shutdown and sleep mode (user selectable)
AC operation	AC adaptor, 90-260 V AC, 50/60 Hz
Adaptor voltage	12 Volt VDC out
<b>Environmental specifications</b>	
Operating temperature range	-15 to +50 °C
Storage temperature range	-40 °C to +70 °C
Humidity, operating and storage, non-condensing	IEC 60068-2-30/24h, 95% relative humidity +25 °C to +40 °C
Encapsulation	IP 54, IEC 60529
Bump, Operational	25G, IEC 60068-2-29
Vibration, Operational	2G, IEC 60068-2-6
EMC, emission	EN 61000-6-3
EMC, immunity	EN 61000-6-2
<b>Physical characteristics</b>	
Camera weight incl. battery	1.3 kg
Camera size (L x W x H)	143 x 195 x 95 mm
Tripod Mounting	1/4" - 20
<b>Lenses optional</b>	
Tele lens, 15°	15° x 11° / 0.5 m
Lens 25°	25° x 19° / 0.25 m
<b>Standard package</b>	

FLIR T600bx-Series: Hard transport case, thermal imaging camera with lens, Battery (2), Battery charger, Large eyecap, Tripod adaptor, Neck strap, Lens cap, Bluetooth® headset, Calibration certificate, FLIR Tools™ PC software CD-ROM, Memory card with adaptor, Power supply incl. multiplugs, Printed Getting Started Guide, Printed important information guide, USB cable, User documentation CD-ROM, HDMI cable (2), Warranty extension card or Registration card

# FLIR B620 / FLIR B660

## Technical specifications

### Camera specific



	FLIR B620	FLIR B660
<b>Imaging performance</b>		
Field of View (FOV) / minimum focus distance	24° x 18° / 0.3 m 45° x 34° / 0.2 m lens needs to be specified when ordering	24° x 18° / 0.3 m 12° x 9° / 1.2 m 45° x 34° / 0.2 m lens needs to be specified when ordering
Spatial resolution	0.65 mrad for 24° lens 1.3 mrad for 45° lens	0.65 mrad for 24° lens 0.33 mrad for 12° lens 1.3 mrad for 45° lens
Thermal sensitivity	40 mK at 30°C	30 mK at 30°C
Electronic zoom	1-2x continuous including pan function	1-8x continuous including pan function
Electric and manual focus with USM technology	Auto and manual	Auto (follows laser spot) and manual
<b>Image presentation</b>		
Automatic contrast optimization	N/A	Adjustable DDE
Thermal Fusion	IR image shown above, below or within temperature interval on the visual image (with 24° lens only)	IR image shown above, below or within temperature interval on the visual image (with 24° lens only)
Picture in Picture	Resizeable and moveable IR area on visual image (with 24° lens only)	Resizeable and moveable IR area on visual image (with 24° lens only)
<b>Measurement</b>		
Accuracy	± 2 °C or ± 2% of reading	± 1 °C or ± 1% of reading (restricted range) ± 2 °C or ± 2%
<b>Measurement analysis</b>		
Spotmeter	3	10
Area	3 boxes or circles with Max./Min./Average	5 boxes or circles with Max./Min./Average
Profile	N/A	1 live line, horizontal or vertical
<b>Image storage</b>		
In-camera storage	N/A	Built-in RAM for burst recording
<b>Laser pointer</b>		
Laser alignment	N/A	Position is automatically displayed on IR image
Laser mode	N/A	Auto-focus / level / spotmeter
<b>Video streaming</b>		
Radiometric IR video recording	N/A	Real-time to built-in RAM, transferrable to memory card
Non-radiometric video recording	N/A	MPEG-4 to memory card
<b>Geographic Information System</b>		
Built-in GPS	N/A	Location data automatically added to every image for referencing on WEB maps
<b>Interfaces</b>		
Firewire	N/A	Yes



\* After product registration on [www.flir.com](http://www.flir.com)



## General

Imaging Performance	
IR resolution	640 x 480 pixels
Spectral range	7.5 - 13 $\mu\text{m}$
Image frequency	30 Hz
Focus	Automatic or manual
Focal Plane Array (FPA)	Uncooled microbolometer
Image presentation	
Display	Built-in Widescreen, 5.6" color LCD, 1024 x 600 pixels
Viewfinder	Built-in, tiltable LCD, 800 x 600 pixels
Automatic image adjustments	Continuous/manual; linear or histogram based
Manual image adjustments	Level/span/max./min.
Image modes	IR image, Visual image, Thumbnail gallery, Thermal Fusion, Picture in Picture
Reference image	Shown together with live IR image
Measurement	
Temperature range	-40°C to +120°C (optional up to +2000°C)
Measurement analysis	
Isotherm	2 with above/below interval
Difference temperature	Delta temperature between measurement functions or reference temperature
Automatic hot / cold detection	Max./Min. temp. value and position shown within box, circle or on a line
Humidity alarm	1 humidity alarm including dew point alarm
Insulation alarm	1 insulation alarm
Measurement function alarm	Audible/visual alarms (above/below) on any selected measurement function
Reference temperature	Manually set or captured from any measurement function
Emissivity correction	Variable from 0.01 to 1.0 or selected from list of materials
Measurement corrections	Reflected temperature, optics transmission, atmospheric transmission
External optics/windows correction	Automatic, based on inputs of optics/window transmission and temperature
Setup	
Set-up controls	Local adaptation of units, language, date and time formats; automatic shutdown, display intensity
Programmable buttons	2
Image storage	
Type	SD memory card
Format	Standard JPEG - 14 bit measurement data included
Modes	IR/visual images, simultaneous storage of IR and visual images, visual image is automatically associated with corresponding IR image
Periodic image storage	Every 10 seconds up to 24 hours
Panorama	For creating panorama images FLIR Reporter software
Image annotations	
Voice	60 seconds stored with the image (via Bluetooth®)
Text	Predefined text or free text from PDA (via IrDA) stored with the image
Image marker	4 on IR or visual image
Digital camera	
Built-in digital camera	3.2 Mpixel auto-focus with video lamp
Laser Pointer	
Laser	Semiconductor AlGaInP diode laser, Class 2
Video streaming	
Non-radiometric IR video streaming	MPEG-4 to PC using USB or WLAN (optional)
Power System	
Battery time	Rechargeable Lithium Ion battery, field replaceable
Battery operating time	3 hours
Charging system	In camera, AC adapter, 2-bay charger or 12 V from a vehicle
Power management	Automatic shutdown, and sleep mode (user selectable)
AC operation	AC adapter, 90-260 V AC, 50/60 Hz
Adaptor voltage	12 V DC out
Environmental specifications	
Operating temperature range	-15 °C to +50 °C
Storage temperature range	-40 °C to +70 °C
Humidity (operating and storage)	IEC 68-2-30/24 h 95% relative humidity +25 °C to +40 °C
Shock	25 g (IEC 60068-2-29)
Vibration	2 g (IEC 60068-2-6)
Encapsulation	IP 54 (IEC 60529)
Interfaces	
USB-A	Connect external USB device (copy to memory stick)
USB Mini-B	Data transfer to and from PC / streaming MPEG-4
Composite video	PAL or NTSC
IrDA	For sending text comment files from PDA to camera, wireless transfer of text
WLAN	Optional
Headset connection	Yes
WiFi	Connects directly to Ipad/Iphone for image transfer or via local network
Physical characteristics	
Camera weight, incl. battery	1.8 kg
Camera size (L x W x H)	299 x 144 x 147 mm
Shipping size	520 x 400 x 200 mm
Shipping weight	8.2 kg
Standard package	

FLIR B620 or FLIR B660: Hard transport case, Thermal imaging camera with lens, Battery (2 ea., one inserted in camera, one outside camera), Battery charger, Calibration certificate, FLIR Tools™ PC software CD-ROM, FireWire cable, 4/6, FireWire cable, 6/6, Bluetooth® headset, Bluetooth® USB micro adaptor, Headset, Lens cap (mounted on lens), Lens cap (2 ea.), Power supply including multi plugs, Memory card-to-USB adaptor, Memory card with adaptor, Power supply, Printed Getting Started Guide, Printed Important Information Guide, Shoulder strap, USB cable, User documentation CD-ROM, Video cable, Warranty extension card or Registration card

# FLIR i3 / i5 / i7



## Accessories

### Power



#### Car charger

[T911025]

This cable is used to power the thermal imaging camera from the 12V socket in a car.



#### Battery

[T197410]

Extra battery that will allow you to spend extra time in the field doing inspections.



#### Power supply incl. Multi-plugs

[T910711]

This power supply is used when powering the camera from the mains supply or to charge the batteries. It comes with different types of plugs.

## Accessories



#### Hard transport case

[T197619]

Rugged, watertight plastic shipping case. Holds all items securely. The case can be locked with padlocks and features a breather valve to prevent pressure build-up in airplane cargo holds.



#### Pouch

[T911085]

Soft pouch to protect the camera. Including shoulder strap.



#### Tool belt

[T910933]

Tool belt for thermal imaging camera pouches.



#### Memory card micro-SD with adaptors

[T910737]

Capture images on the go with your camera. These small cards are easy to use and can hold a great amount of data.



#### USB cable Std-A <-> Mini-B

[1910423]

USB cable to connect the camera.

# FLIR Ebx-Series



## Accessories

### Power



#### Cigarette lighter adaptor kit, 12 V DC, 1.2 m

[1910490]

Can be used to power the camera from the cigarette lighter socket in a car.



#### Battery

[T197752]

High capacity battery for the IR camera.



#### Battery charger

[T198125]

Stand-alone 2-bay battery charger, including power supply with multi plugs.



#### Power supply incl. Multi-plugs

[T910814]

This power supply is used when powering the camera from the mains supply or to charge the batteries. It comes with different types of plugs.

## Storage



### Memory card micro-SD with adaptors

[T910737]

Capture images on the go with your camera. These small cards are easy to use and can hold a great amount of data.

## Miscellaneous



### USB cable Std-A <-> Mini-B

[1910423]

USB cable to connect the camera.



### Video cable

[1910582]

This cable can be used to transfer the images of the E-Series thermal imaging cameras to a monitor.



### Tripod adapter

[T197926]

Tripod adapter, necessary to be able to mount the camera on a tripod.



### Bluetooth headset

[T197771]

The Bluetooth headset can be used for annotation thermal images with voice messages. There is a wireless connection between the camera and the headset.



### Pouch

[T911087]

Pouch, including shoulder strap, for FLIR Exx series.



### Tool belt

[T911093]

Tool belt for thermal imaging camera pouches.



### Hard transport case

[T197935]

Rugged, watertight plastic shipping case. Holds all items securely. The case can be locked with padlocks and features a breather valve to prevent pressure build-up in airplane cargo holds.



### Sun shield

[T127100]

Snap-on sunshield to increase visibility of the LCD display.



### Extech Clamp meter EX845

[T910972]

Can be connected to the thermal imaging camera through MeterLink™



### Extech Moisture meter MO297

[T910973]

Can be connected to the thermal imaging camera through MeterLink™

## Lenses



### Lens 10 mm, 45° field of view incl. case

[1196960]

Sometimes there isn't enough room to step back and see the whole picture. This wide angle lens has a field of view almost double than the one of the standard 25° lens. Perfect for wide or tall targets such as electrical panels or paper machinery.



### Lens 30 mm, 15° field of view, incl. case

[1196961]

When the target in question is a distance away it may be useful to use a telescope lens. The 15° lens is a popular lens accessory and provides almost 2X magnification compared to the 25° lens. Ideal for small or distant targets such as overhead power lines.

# FLIR B250 / B335



## Accessories

### Power



#### Battery

[1196398]

Extra battery that will allow you to spend extra time in the field doing inspections.



#### 2-bay battery charger, incl. power supply with multi-plugs

[T197650]

This 2 bay battery charger is used for charging FLIR Systems' camera batteries.



#### Cigarette lighter adaptor kit, 12 V DC, 1.2 m

[1910490]

Can be used to power the camera from the cigarette lighter socket in a car.



#### Power supply incl. Multi-plugs

[T910750]

Combined power supply, including multi plugs and battery charger to charge the battery when it is inside or outside of the camera.

#### Battery package

[T197667]

A complete battery package consisting of three standard products: a battery, 2-bay battery charger including power supply with multi-plugs and a cigarette lighter adaptor kit.

### Storage



#### Memory card micro-SD with adaptors

[T910737]

Capture images on the go with your camera. These small cards are easy to use and can hold a great amount of data.



#### Adaptor, SD memory card to USB

[1910475]

Allows to transfer the images from the SD card to a PC.

### Miscellaneous



#### Hard transport case

[1196895]

Rugged, watertight plastic shipping case. Holds all items securely. The case can be locked with padlocks and features a breather valve to prevent pressure build-up in airplane cargo holds.



#### Neck strap

[1124544]

Ties the camera around your neck so that it is protected against falling.



#### Pouch

[1124545]

Soft pouch to protect the camera.



#### Sun shield

[1123970]

Snap-on sunshield to increase visibility of the LCD display.



#### Extech Clamp meter EX845

[T910972]

Can be connected to the thermal imaging camera through MeterLink™



#### Extech Moisture meter MO297

[T910973]

Can be connected to the thermal imaging camera through MeterLink™

## Lenses



### Lens cap

Lens cap for the camera

[1196818]



### Lens 4 mm, 90° field of view, incl. case and mounting support

[T197412]

Sometimes there isn't enough room to step back and see the whole picture. This wide angle lens has a field of view almost four times the one of the standard 25° lens. This wide angle lens is perfect for wide or tall targets such as electrical panels or paper machinery.



### Lens 10 mm, 45° field of view incl. case

[1196960]

Sometimes there isn't enough room to step back and see the whole picture. This wide angle lens has a field of view almost double than the one of the standard 25° lens. Perfect for wide or tall targets such as electrical panels or paper machinery.



### Lens 30 mm, 15° field of view, incl. case

[1196961]

When the target in question is a distance away it may be useful to use a telescope lens. The 15° lens is a popular lens accessory and provides almost 2X magnification compared to the 25° lens. Ideal for small or distant targets such as overhead power lines.



### Lens 76 mm, 6° field of view, incl. case and mounting support

[T197408]

For maximum magnification, the 6° lens is the only choice. This optic provides almost 3.5X magnification compared to the 25° lens and is ideally suited for inspection of overhead power lines. Due to the weight of this lens, a tripod is recommended.



### Close-up lens 4x incl. case

[T197215]

The close-up lens provides a 4X magnification and is ideal for development purposes like looking at PCB's or small electronic components.



### Close-up lens 2x incl. case

[T197214]

The close-up lens provides a 2X magnification and is ideal for development purposes like looking at PCB's or small electronic components.

## Cables



### Video cable

[1910582]

This cable can be used to transfer the images of the T/B-Series thermal imaging cameras to a monitor.



### USB cable Std-A <-> Mini-B

[1910423]

USB cable to connect the camera with a computer, using the USB protocol.

## Extended measurement ranges

### High temperature option to +350°C

[T197006]

Allow to measure temperatures of up to +350°C with the camera.

### High temperature option to +1200°C

[T197000]

Allow to measure temperatures of up to +1200°C with the camera.

## Headsets



### Bluetooth® headset

[T197771]

Headset with Bluetooth® for wireless connection with the thermal imaging camera, including microphone.



### Headset, 3.5 mm plug

[1910489]

This headset is used when annotating thermal images with voice messages. It features an adjustable microphone that can be on the right or on the left side of the headset. It connects to the headset connector on the camera.



### Bluetooth USB micro adaptor

[T951235]

For wireless connection between the thermal imaging camera and external Bluetooth equipment and to transfer data from selected Extech instruments via MeterLink to the camera.



### Wi-Fi USB adaptor

[T951387]

Wi-Fi USB adaptor for wireless connection between the thermal imaging camera and external equipment.

**NEW**

# FLIR T400bx-Series



## Accessories

### Power



#### Battery

[1196398]

Extra battery that will allow you to spend extra time in the field doing inspections.



#### 2-bay battery charger, incl. power supply with multi-plugs

[T197650]

This 2 bay battery charger is used for charging FLIR Systems' camera batteries.



#### Cigarette lighter adaptor kit, 12V DC, 1.2 m

[1910490]

Can be used to power the camera from the cigarette lighter socket in a car.



#### Power supply incl. Multi-plugs

[T910750]

Combined power supply, including multi plugs and battery charger to charge the battery when it is inside or outside of the camera.

#### Battery package

[T197667]

A complete battery package consisting of three standard products: a battery, 2-bay battery charger including power supply with multi-plugs and a cigarette lighter adaptor kit.

### Storage



#### Memory card micro-SD with adaptors

[T910737]

Capture images on the go with your camera. These small cards are easy to use and can hold a great amount of data.



#### Adaptor, SD memory card to USB

[1910475]

Allows to transfer the images from the SD card to a PC.

### Miscellaneous



#### Hard transport case

[1196895]

Rugged, watertight plastic shipping case. Holds all items securely. The case can be locked with padlocks and features a breather valve to prevent pressure build-up in airplane cargo holds.



#### Neck strap

[1124544]

Ties the camera around your neck so that it is protected against falling.



#### Pouch

[T911048]

Soft pouch to protect the camera. Possible to attach to tool belt.



#### Tool belt

[T911093]

Tool belt for thermal imaging camera pouches.



#### Sun shield

[1123970]

Snap-on sunshield to increase visibility of the LCD display.



#### Extech Clamp meter EX845

[T910972]

Can be connected to the thermal imaging camera through MeterLink™



#### Extech Moisture meter MO297

[T910973]

Can be connected to the thermal imaging camera through MeterLink™

## Lenses



### Lens cap

Lens cap for the camera

[1196818]



### Lens 4 mm, 90° field of view, incl. case and mounting support

[T197412]

Sometimes there isn't enough room to step back and see the whole picture. This wide angle lens has a field of view almost four times the one of the standard 25° lens. This wide angle lens is perfect for wide or tall targets such as electrical panels or paper machinery.



### Lens 10 mm, 45° field of view incl. case

[1196960]

Sometimes there isn't enough room to step back and see the whole picture. This wide angle lens has a field of view almost double than the one of the standard 25° lens. Perfect for wide or tall targets such as electrical panels or paper machinery.



### Lens 30 mm, 15° field of view, incl. case

[1196961]

When the target in question is a distance away it may be useful to use a telescope lens. The 15° lens is a popular lens accessory and provides almost 2X magnification compared to the 25° lens. Ideal for small or distant targets such as overhead power lines.



### Lens 76 mm, 6° field of view, incl. case and mounting support

[T197408]

For maximum magnification, the 6° lens is the only choice. This optic provides almost 3.5X magnification compared to the 25° lens and is ideally suited for inspection of overhead power lines. Due to the weight of this lens, a tripod is recommended.



### Close-up lens 4x incl. case

[T197215]

The close-up lens provides a 4X magnification and is ideal for development purposes like looking at PCB's or small electronic components.



### Close-up lens 2x incl. case

[T197214]

The close-up lens provides a 2X magnification and is ideal for development purposes like looking at PCB's or small electronic components.

## Cables



### Video cable

[1910582]

This cable can be used to transfer the images of the T/B-Series thermal imaging cameras to a monitor.



### USB cable Std-A <-> Mini-B

[1910423]

USB cable to connect the camera with a computer, using the USB protocol.

## Extended measurement ranges

### High temperature option to +350°C

[T197006]

Allow to measure temperatures of up to +350°C with the camera.

## Headsets



### Bluetooth® headset

[T197771]

Headset with Bluetooth® for wireless connection with the thermal imaging camera, including microphone.

# FLIR T600bx-Series



## Accessories

### Power



#### **Cigarette lighter adaptor kit, 12 V DC, 1.2 m**

[1910490]

Can be used to power the camera from the cigarette lighter socket in a car.



#### **2-bay battery charger, incl. power supply with multi-plugs**

[T198126]

This 2 bay battery charger is used for charging FLIR Systems' camera batteries.



#### **Battery**

[T198055]

Extra battery that will allow you to spend extra time in the field doing inspections.



#### **Power supply incl. Multi-plugs**

[T910814]

This power supply is used when powering the camera from the mains supply or to charge the batteries. It comes with different types of plugs.

### Storage



#### **Memory card micro-SD with adaptors**

[T910737]

Capture images on the go with your camera. These small cards are easy to use and can hold a great amount of data.

### Cables



#### **USB cable Std-A <-> Mini-B**

[1910423]

USB cable to connect the camera with a computer, using the USB protocol.



#### **HDMI to DVI cable, 1.5 m**

[T910930]

Can be used to show the high resolution images of the camera on a screen with DVI input.



#### **HDMI to HDMI cable, 1.5 m**

[T910891]

Can be used to show the high resolution images of the camera on a screen with HDMI input.

### Headsets



#### **Bluetooth® headset**

[T197771]

Headset with Bluetooth® for wireless connection with the thermal imaging camera, including microphone.

### Extended measurement ranges

#### **High temperature option +300°C up to +2,000°C**

[T197896]

Allow to measure temperatures of up to +2,000°C with the camera.



## Lenses



### Lens 88.9 mm, 7° field of view incl. case

[T198166]

The 7° lens is a popular lens accessory and provides 3.6x magnification compared to the standard lens. Ideal for small or distant targets



### Lens 41.3 mm, 15° field of view incl. case

[T197914]

The 15° lens is a popular lens accessory and provides 1.7x magnification compared to the standard lens. Ideal for small or distant targets such as overhead power lines.



### Lens 24.6 mm, 25° field of view incl. case

[T197922]

The standard 25° lens is suitable for the majority of applications.



### Lens 13.1 mm, 45° field of view incl. case

[T197915]

This wide angle lens has a field of view almost double that of the standard 25° lens. Perfect for wide or tall targets or when working in confined areas.



### Lens 6.5 mm, 80° field of view incl. case

[T198065]

This wide angle lens has a field of view of more than 3 times that of the standard lens. Ideal for shooting images of large objects from a short distance.



### Close-up lens 32 mm (fits 25° lens) incl. case

[T198059]

The 32 mm lens provides a 2.9X magnification and is ideal for development purposes like looking at PCB's or small electronic components. Can only be mounted on 25° lens.



### Close-up lens 64 mm (fits 25° lens) incl. case

[T198060]

The 64 mm lens provides a 5.8X magnification and is ideal for development purposes like looking at PCB's or small electronic components. Can only be mounted on 25° lens.

## Miscellaneous



### Hard transport case

[T197924]

Rugged, watertight plastic shipping case. Holds all items securely. The case can be locked with padlocks and features a breather valve to prevent pressure build-up in airplane cargo holds.



### Pouch

[T911048]

Soft pouch to protect the camera. Possible to attach to tool belt.



### Tool belt

[T911093]

Tool belt for thermal imaging camera pouches.



### Tripod adapter

[T197731]

Tripod adapter, necessary to be able to mount the camera on a tripod.



### Neck strap

[1124544]

Ties the camera around your neck so that it is protected against falling.



### Large eyecap

[T197883]

Can be mounted on the viewfinder.



### Stylus pen

[T197753]

Can be used to operate the touch screen.



### Extech Clamp meter EX845

[T910972]

Can be connected to the thermal imaging camera through MeterLink™



### Extech Moisture meter MO297

[T910973]

Can be connected to the thermal imaging camera through MeterLink™

# FLIR B620 / FLIR B660



## Accessories

### Power



#### Battery

[1196209]

High capacity battery that will allow you to spend extra time in the field doing inspections.



#### Battery charger

[T197692]

This 2 bay battery charger is used for charging FLIR Systems' camera batteries.



#### Cigarette lighter adaptor kit, 12 V DC, 1.2 m

[1910490]

Can be used to power the camera from the cigarette lighter socket in a car.



#### Power supply incl. Multi-plugs

[T910814]

This power supply is used when powering the camera from the mains supply or to charge the batteries. It comes with different types of plugs.

### Storage



#### Adaptor, SD memory card to USB

[1910475]

Allows to transfer the images from the SD card to a PC.



#### Memory card micro-SD with adaptors

[T910737]

Capture images on the go with your camera. These small cards are easy to use and can hold great amount of data.

### Extended measurement ranges

#### High temperature option to +1,500°C

[1196744]

Allow to measure temperatures of up to +1,500°C with the camera.

#### High temperature option to +2,000°C

[1196745]

Allow to measure temperatures of up to +2,000°C with the camera.

### Miscellaneous



#### Hard transport case

[T197262]

Rugged, watertight plastic shipping case. Holds all items securely. The case can be locked with padlocks and features a breather valve to prevent pressure build-up in airplane cargo holds.

#### Option for IR-video streaming

[T197921]

Radiometric IR-video streaming using FireWire



#### Bluetooth® headset

[T197771]

Headset with Bluetooth® for wireless connection with the thermal imaging camera, including microphone.



#### Headset, 3.5 mm plug

[1910489]

This headset is used when annotating thermal images with voice messages. It features an adjustable microphone that can be on the right or on the left side of the headset. It connects to the headset connector on the camera.



#### Remote control unit

[T197230]

Can be used to control the camera safely from a remote distance. Extremely useful when the camera needs to look at dangerous processes.

**Bluetooth USB micro adaptor**[\[T951235\]](#)

For wireless connection between the thermal imaging camera and external Bluetooth equipment and to transfer data from selected Extech instruments via MeterLink to the camera.

**Wi-Fi USB adaptor**[\[T951387\]](#)

Wi-Fi USB adaptor for wireless connection between the thermal imaging camera and external equipment.

**Extech Clamp meter EX845**[\[T910972\]](#)

Can be connected to the thermal imaging camera through MeterLink™

**Extech Moisture meter MO297**[\[T910973\]](#)

Can be connected to the thermal imaging camera through MeterLink™

## Lenses

**Lens 19 mm, 45° field of view, incl. case**[\[T197189\]](#)

Sometimes there isn't enough room to step back and see the whole picture. This wide angle lens has a field of view almost double than the one of the standard 24° lens. Perfect for wide or tall targets such as electrical panels or paper machinery.

**Lens 38 mm, 24° field of view, incl. case**[\[T197187\]](#)

The 24° lens can be used for daily inspections. Suitable for the majority of applications.

**Lens 76 mm, 12° field of view, incl. case**[\[T197188\]](#)

When the target in question is a distance away it may be useful to use a telescope lens. The 12° lens is a popular lens accessory and provides 2X magnification compared to the 24° lens. Ideal for small or distant targets such as overhead power lines.

**Lens 131 mm, 7° field of view, incl. case**[\[T197190\]](#)

For maximum magnification, the 7° lens is the only choice. This optic provides almost 3.5X magnification compared to the 24° lens and is ideally suited for inspection of overhead power lines. Due to the weight of this lens, a tripod is recommended.

**Protective window (fits 24° lens), incl. case**[\[T197343\]](#)

A protective plastic window: suitable when the camera is used in a dusty environment or when there is a risk of liquids splashing on the lens. The window is made of monocrySTALLINE fluoride.

**Close-up lens 75 mm field of view (fits 24° lens), incl. case**[\[1196683\]](#)

This close-up optics attaches to the standard 24 lens and is ideal for looking at very small objects.

**Macro lens 16 mm field of view, incl. case**[\[T197341\]](#)

For R&D usage or development purposes. For example looking at PCB's or small electronic components.

## Cables

**FireWire cable 4/6, 2 m**[\[1910483\]](#)

This cable is used to connect a thermal imaging camera to a computer using the FireWire protocol.

**FireWire cable 6/6, 2 m**[\[1910482\]](#)

This cable is used to connect a thermal imaging camera to a computer using the FireWire protocol.

**USB cable Std-A <-> Mini-B, 1.8 m**[\[1910423\]](#)

Can be used to transfer images from the camera to a computer using the USB protocol.

**Video Cable RCA to RCA**[\[1910484\]](#)

This cable can be used to transfer the images of the B-Series thermal imaging cameras to a monitor.

# FLIR Systems

Export Licensing



The products described in this publication may require government authorization for export/re-export, or transfer. Contact FLIR Systems for details.



\* After product registration on [www.flir.com](http://www.flir.com)

*Specifications are subject to change without notice.  
Weights and dimensions are indicative. Imagery used for illustration purposes only.*

*April 2012. All previous catalogues are obsolete.*

*Copyright 2012, FLIR Systems Inc. All other brand and product names are trademarks of their respective owners.  
Due to regional radio legislation, the Wi-Fi and Bluetooth functions may not be available for countries outside EU, US, Canada and Australia.*

# FLIR Systems

News



## Thermal imaging guidebook for building and renewable energy applications

Thermal imaging cameras are being used for a wide variety of building applications.

This booklet is an in-depth guide for these building applications. Not only does it give a comprehensive overview of a large number of applications, it also explains how to do thermal inspections in an efficient way, what you should pay attention to when buying a thermal imaging camera and much more.

These details and many other key thermal imaging aspects are all covered in this 68-page hard-copy guide.

You can order a free hard-copy of the guide on our website: [www.flir.com](http://www.flir.com)

## Application stories

FLIR Systems regularly publishes application stories in which customers are explaining what they are doing with a FLIR thermal imaging camera and how it helps them to save time and money. All application stories can be downloaded from our website: [www.flir.com](http://www.flir.com)



# FLIR Systems

Online

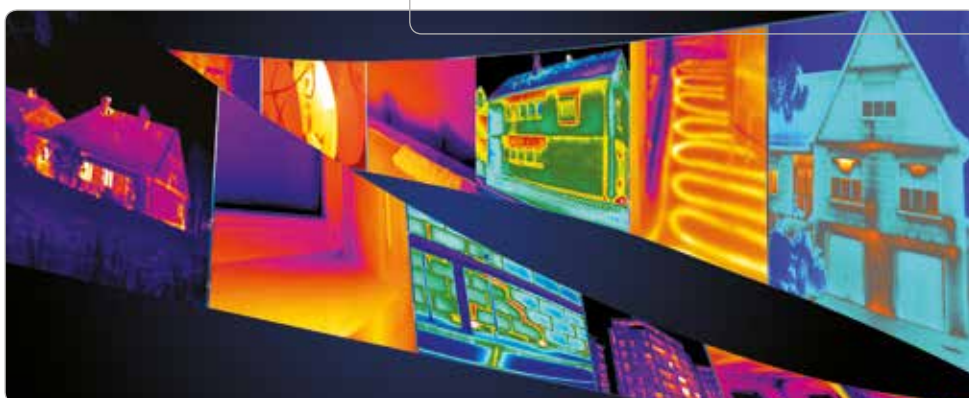


Up-to-date information  
Application stories  
Technical notes  
Informative videos



Visit our website [www.flir.com](http://www.flir.com)



**FLIR Commercial Systems B.V.**

Charles Petitweg 21  
4847 NW Breda  
The Netherlands  
Tel. : +31 (0) 765 79 41 94  
Fax : +31 (0) 765 79 41 99  
e-mail: flir@flir.com

**FLIR Systems Sweden**

Rinkebyvägen 19  
PO Box 3  
SE-182 11 Danderyd  
Sweden  
Tel.: +46 (0)8 753 25 00  
Fax: +46 (0)8 753 23 64  
e-mail: flir@flir.com

**FLIR Systems UK**

2 Kings Hill Avenue - Kings Hill  
West Malling  
Kent  
ME19 4AQ  
United Kingdom  
Tel.: +44 (0)1732 220 011  
Fax: +44 (0)1732 843 707  
e-mail: flir@flir.com

**FLIR Systems Germany**

Berner Strasse 81  
D-60437 Frankfurt am Main  
Germany  
Tel.: +49 (0)69 95 00 900  
Fax: +49 (0)69 95 00 9040  
e-mail: flir@flir.com

**FLIR Systems France**

19, bld Bidault  
77183 Croissy-Beaubourg  
France  
Tel.: +33 (0)1 60 37 01 00  
Fax: +33 (0)1 64 11 37 55  
e-mail : flir@flir.com

**FLIR Systems Italy**

Via Luciano Manara, 2  
I-20812 Limbiate (MB)  
Italy  
Tel.: +39 (0)2 99 45 10 01  
Fax: +39 (0)2 99 69 24 08  
e-mail: flir@flir.com

**FLIR Systems Spain**

Avenida de Bruselas, 15- 3º  
28108 Alcobendas (Madrid)  
Spain  
Tel. : +34 91 573 48 27  
Fax.: +34 91 662 97 48  
e-mail: flir@flir.com

**FLIR Systems, Middle East FZE**

Dubai Airport Free Zone  
P.O. Box 54262  
Office B-22, Street WB-21  
Dubai - United Arab Emirates  
Tel.: +971 4 299 6898  
Fax: +971 4 299 6895  
e-mail: flir@flir.com

**FLIR Systems Russia**

6 bld.1, 1st Kozjevnickesky lane  
115114 Moscow  
Russia  
Tel.: + 7 495 669 70 72  
Fax: + 7 495 669 70 72  
e-mail: flir@flir.com

[www.flir.com](http://www.flir.com)



\* After product registration on [www.flir.com](http://www.flir.com)

Authorised FLIR dealer: