



Transgulf Cement Products L.L.C.

عبر الخليج للمنتجات الإسمنتية ذ.م.م.

PRODUCTS

KERBS

About us

Founded in 1996, Transgulf Cement Products is one of the leading suppliers of concrete products in the GCC region. Strategically located in the Jebel Ali Industrial Area, we cater to the product requirements of a range of clientele, having built up a solid, unshakeable reputation in the industry over the last decade. Constant innovation and exceptional customer service lie at the heart of our company values, and these founding principles have marked every venture of Transgulf, making us one of the leading names for concrete products in the region.

Symbolic of our founding principles, our products serve to strengthen, enhance and toughen the landscape where they are applied. Equipped with state-of-the-art technology, our plant operates with seamless efficiency and productivity, 24 hours a day. In addition, we take pride in our in-house research and development wing, where our experts are committed to the development of innovations in engineering and manufacturing processes to make our products one of the best in the industry.

“Two values lie at the heart of Transgulf’s operations in the UAE: exceptional customer service and constant innovation. These founding principles, which have guided us from the beginning, have been the key to our success.”
Board of Directors

At Transgulf Cement Products, our first commitment is to provide quality products through prompt delivery, followed by active involvement until project completion. Our consultancy team of experienced professionals are always ready to provide you with valuable assistance in selecting a product, pattern, colour or design. Our efficient after-sales service team makes regular visits to construction sites to ensure smooth co-ordination between project requirements and product supply. Our growing list of clients stands testament to Transgulf’s standards of quality and excellence.

Our wide range of concrete products are available in a multitude of colours, patterns and designs to suit all types of architectural projects. For over a decade, we have been providing clients quality products for their every need. No matter what your requirements - be it a villa or building complex, a warehouse or public park - our team of experienced professionals will provide you with all the assistance needed in making the right selection for your particular requirements.



KERBS

Our ranges of Kerbstones are designed to complement block paving and at the same time serve as an ideal, attractive and versatile edge restraint. Extensive engineering and a good selection of components make this an exceptional bonding unit for paving blocks.

Kerbing improves delineation of road edges and contributes to the appearance and safety of the road. Some of the main purposes of the kerbstones are:

- Improvement of aesthetic values of the road alignment
- To protect pedestrians
- To assist drainage
- To improve channelization and delineation of traffic flows

specifications 7263 All Transgulf’s kerbstones meet BS



Table of contents

2.1	Heel Kerb
2.2	Sienna® Kerb
2.3	Half Battered Kerb
2.4	Flush Kerb
2.5	Bullnose Kerb
2.6	Gutter Kerb
2.7	Barrier Kerb
2.8	Rollover Kerb®
2.9	Channel Kerb
2.10	Wheel Stopper



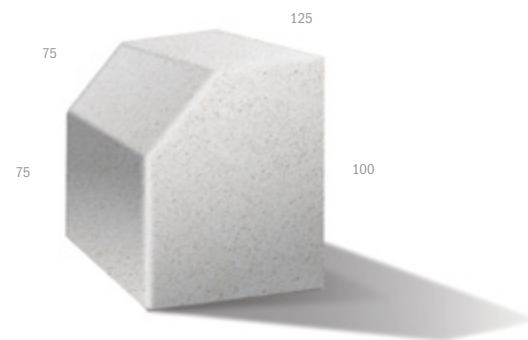
2.1 KERBS Heel Kerbs

Item	Heel Kerb	
Length(mm)	600	600
Width(mm)	75	100
Thickness(mm)	150	200
Weight of block (kg)	16	28.5
Blocks /m ²	1.66	1.66
Blocks/bundle	88	56
Square meter/bundle	52.8	33.6

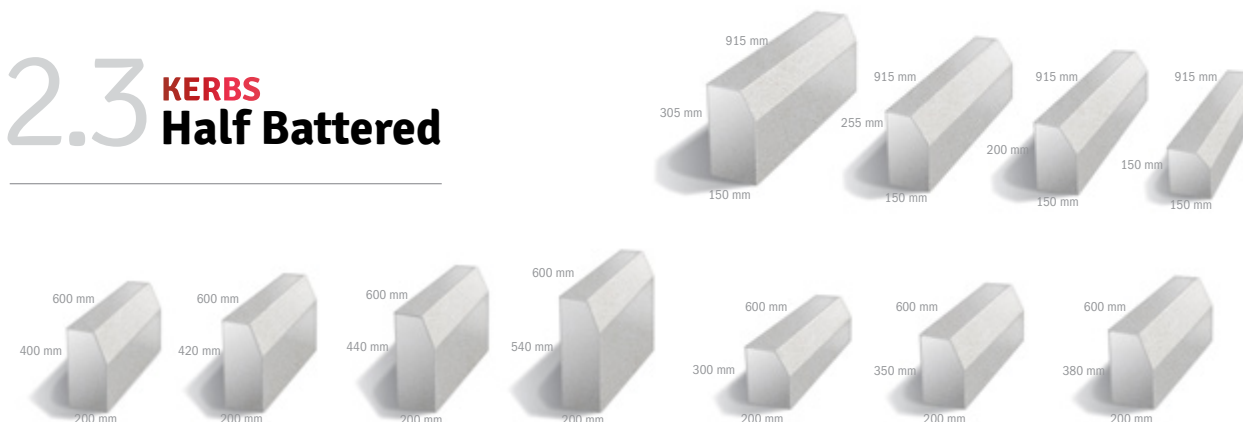


2.2 KERBS Sienna® Kerb

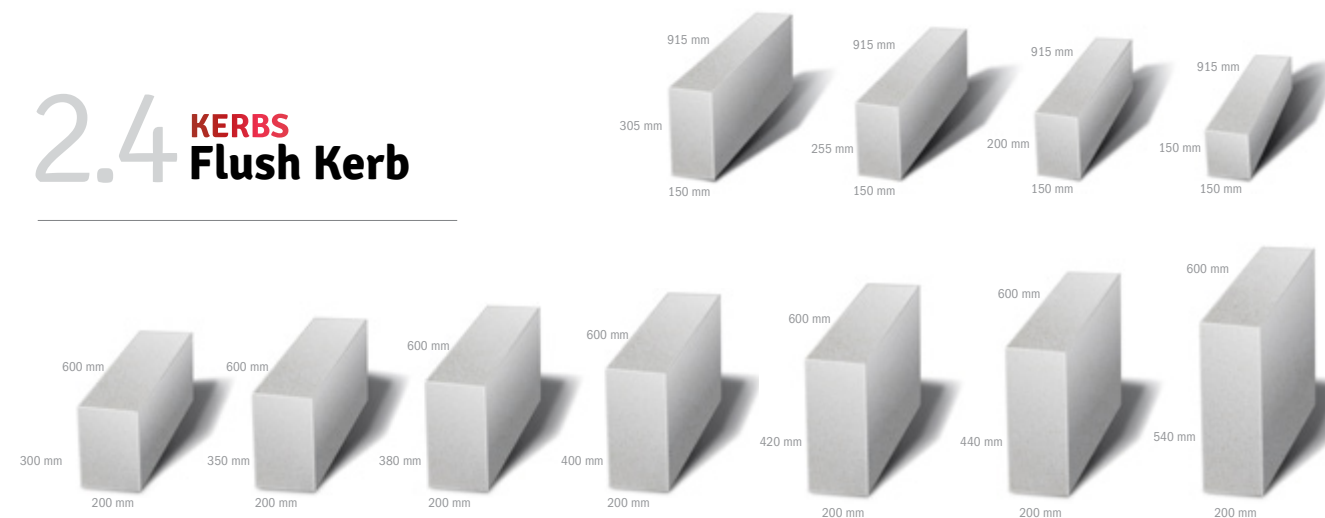
Item	Tegula Kerb
Length(mm)	100
Width(mm)	125
Thickness(mm)	200
Weight of block (kg)	5.6
Blocks /m ²	10
Blocks/bundle	324
Square meter/bundle	32.4



2.3 KERBS Half Battered

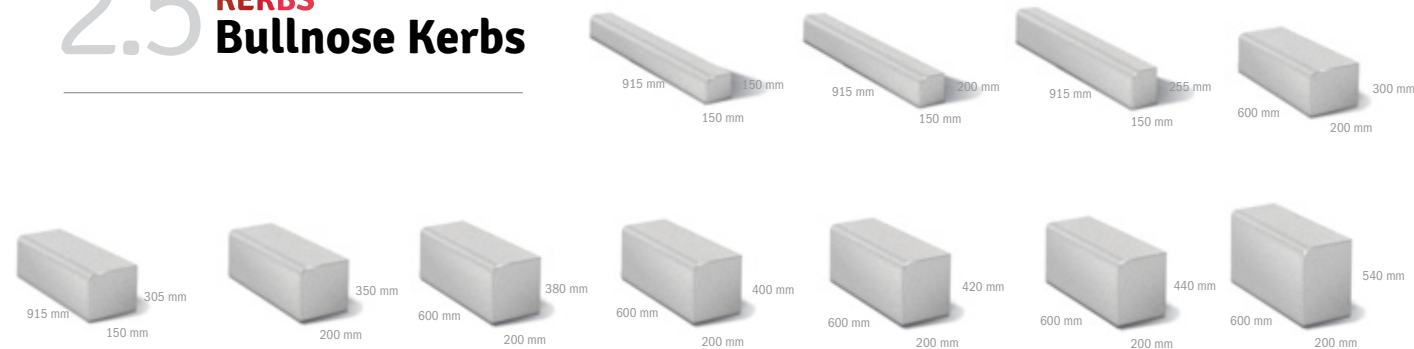


2.4 KERBS Flush Kerb

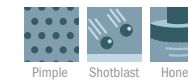
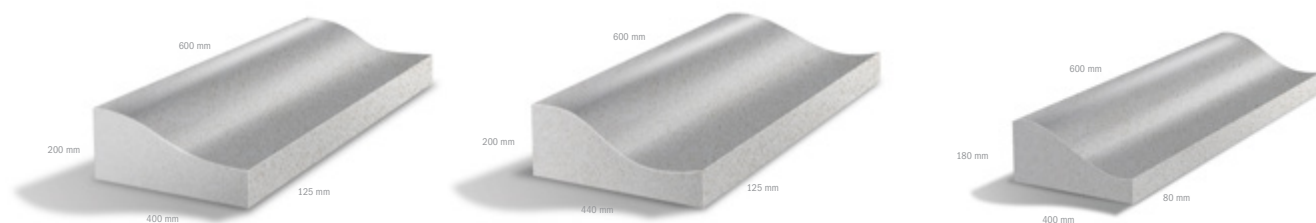




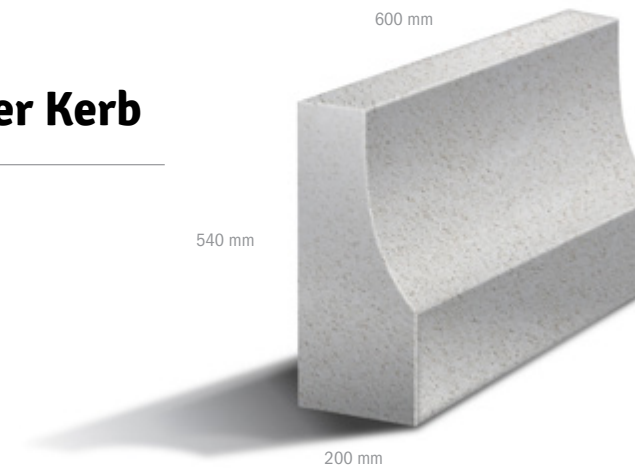
2.5 **KERBS** Bullnose Kerbs



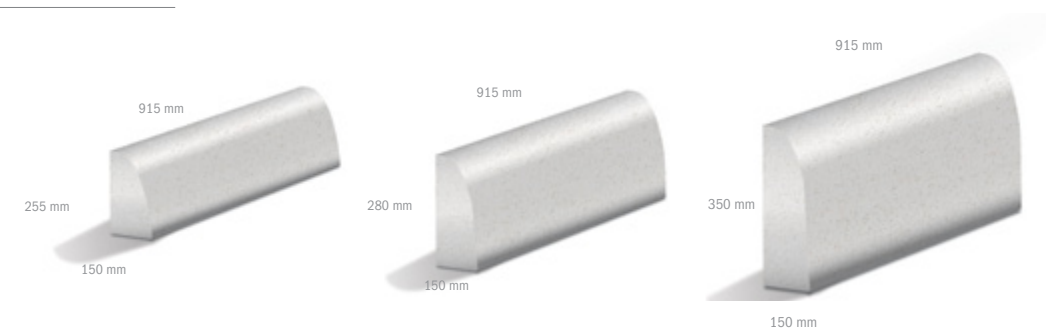
2.6 **KERBS** Gutter Kerb



2.7 **KERBS** Barrier Kerb

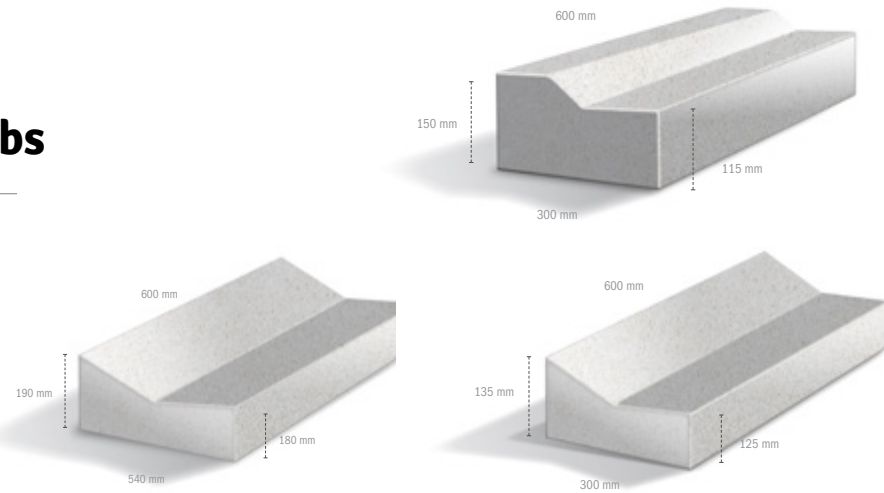


2.8 **KERBS** Rollover Kerbs

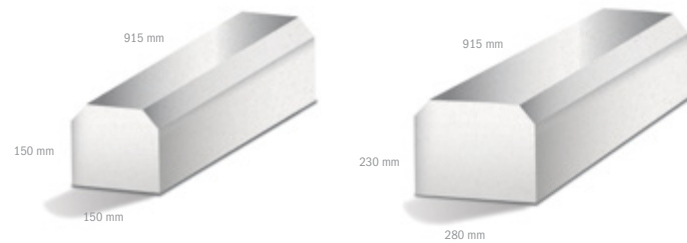




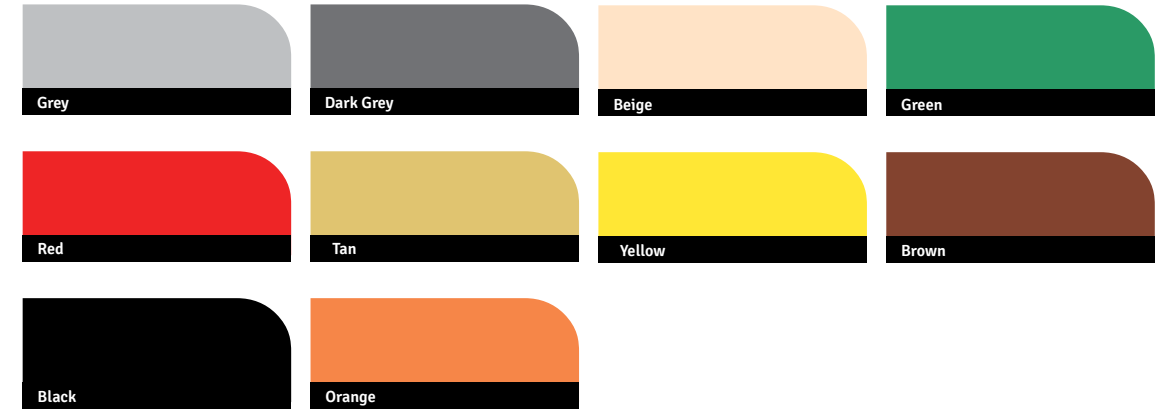
2.9 KERBS Channel Kerbs



2.10 KERBS Wheel Stopper



Colours



Important Information

HEALTH AND SAFETY

Care should be taken when handling and installing TRANSGULF CEMENT PRODUCTS. Units weighing 20kg or more should ideally be handled mechanically, or by two or more persons if the process of carrying is repetitive.

DELIVERY AND STORAGE

TRANSGULF CEMENT PRODUCTS are normally delivered to sites, properly packed on crane-offload road vehicles. Upon special request,

packs can also be delivered shrink-wrapped and/or palletized to aid subsequent site movement activities. After delivery, the customer is solely responsible to ensure all packaging is carefully disposed off in accordance with the local environmental laws. Delivered products should be stacked at a planned location on the site to avoid the double handling. Bundles should be stacked onto a prepared, clean area to minimize soiling and damage. It is highly recommended that the products are kept at a distant location, away from passing vehicles and pedestrians.

Important Information

EFFLORESCENCE

All concrete products may, in their early life, appear to lose some intensity of color and experience a white stain on the face of the product. This phenomenon is known as efflorescence, it is a temporary phenomenon and stains will generally clear within a period of time. This is not detrimental to the product performance in any way and TRANSGULF CEMENT PRODUCTS cannot be held responsible for its occurrence.

COLOR VARIATION

Due to the phenomenon of different curing, slight color and shade variation do occur on individual colored concrete products. Site conditions, seasonal manufacture, or naturally occurring variations in the aggregates used, can also cause variations. This is generally considered to enhance the natural stone effect and the colors will invariably wither in time.

MAINTENANCE

It is recommended that the paving materials are cleaned 2-3 times in a year to maintain appearance. Products which are paved on driveway, particularly of light colors, require more maintenance as the tire mark and oil leakage can diminish the appearance. It is

recommended to clean using normal water with a soft brush, high pressure jet pumps should not be used.

ORDERING

(To avoid shortage/wastage of material, please double check the order quantity as Transgulf cement products LLC will neither be responsible for extra material nor the duration to deliver the shortage material).

To avoid any confusion with respect to ordering, it is suggested that the paving tiles are ordered as a total batch and drawn out from several packs at the same time, to enhance any color variation. We recommend that colors are chosen from actual materials rather than color photographs herein.

WEATHERING

All concrete products will wither and change, especially after a period of time with exposition to natural elements.

SIZES

TRANSGULF's paving is manufactured to capture the authenticity of natural stone and as such, they do vary in thickness. All sizes are nominal and customers are advised to check with their supplier. Fissures can occur on larger individual pavers as a natural result of shrinkage. This does not alter the durability of the product.

LIABILITY

Liability in respect of any statements, conditions, warranties and representations made on behalf of the company, TRANSGULF CEMENT PRODUCTS LLC cannot accept liability for any loss, damage or injuring sustained as a result of following it. We will not take any responsibility or liability if products are being used for purposes other than those for which they are intended for by the manufacturers. Due to our continuous evolution of product design and improvement, our range is subject to change without prior notice. Customers are advised to ensure that the stated information is up to date.

UNSATISFACTORY PRODUCT CONDITION

In case a product is delivered in an unsatisfactory condition, and other than any natural occurring one as described above, the defect would have to be informed about apparent prior to laying. It is at this point that the supplier should be notified of such a fault, and allowed time for the rejected product to be replaced. If the complaint is raised after laying the product, no responsibility will be accepted for any relaying or removing costs.

PRODUCT STANDARDS

ALL "TRANSGULF CEMENT PRODUCTS L.L.C" PRODUCTS ARE MANUFACTURED IN ACCORDANCE WITH INTERNATIONAL STANDARDS, WHERE APPLICABLE.



PRODUCTS

Dubai office:

Jebel Ali Ind. Area. P.O. Box 25595, Dubai, U.A.E

Tel : +971 4 8801020. Fax : +971 4 8801021

Email : info@tgcp.ae. Web : www.tgcp.ae

Abu Dhabi office:

P.O. Box 131329, Abu Dhabi, U.A.E

Tel : +971 2 6797959. Fax : +971 2 6797960

Email : info@tgcp.ae. Web : www.tgcp.ae