

The LIFA Concept: Solutions for Indoor Air Quality (IAQ)

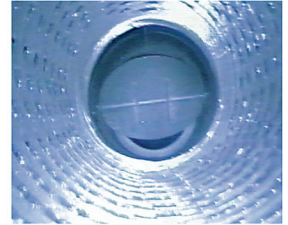


Dirty supply air duct
in a hospital

The Lifa Ventilation hygiene concept for circular and rectangular air supply and exhaust ducts and air handling units.

The concept consists of:

- criteria for cleaning and cleaning results
- methods for the visual evaluation of cleanness
- plans for cleaning
- optimal choice of the cleaning method
- advanced cleaning equipment and procedures
- quality assurance systems and education material



Air duct after cleaning



DuctControl Maxi

DuctControl Maxi

A remote controlled video/digital camera system using a built-in mini tractor, which can be used for visually monitoring cleaning quality and microbial and other sampling methods and accessories.

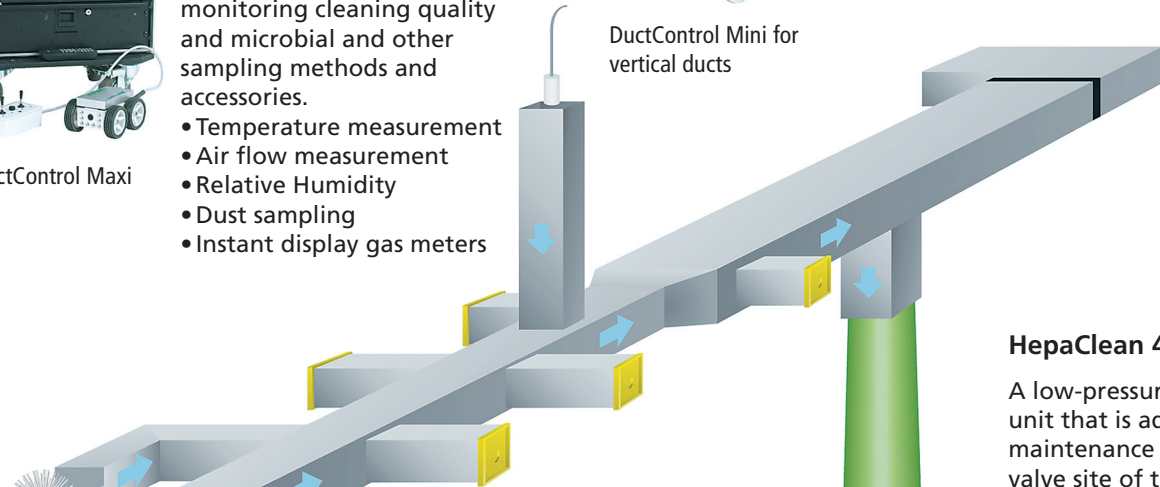
- Temperature measurement
- Air flow measurement
- Relative Humidity
- Dust sampling
- Instant display gas meters



DuctControl Mini for
vertical ducts

DuctControl Mini

A light hand cotrolled version for vertical ducts by which it is possible to survey cleaning needs, and check the quality of cleaning afterwards.



Special Cleaner 20



Hydmaster

Hydmaster

Powerful remote controlled hydraulically driven cleaning equipment with optional integration of video camera to the brush unit for real time control of cleaning quality. Hydmaster has a wide range of accessories

Special Cleaner 20

Electrically driven cleaning equipment with a wide range of accessories. Ideal for small ducts.



HepaClean 4000

HepaClean 4000

A low-pressure vacuuming unit that is adaptable to the maintenance opening or air valve site of the ventilation duct. The other valves are then covered. First the branches of the duct are cleaned using a rotary brush. Powerful air-flow (10–20 ms/s) is needed to carry the loosened dirt into the collecting filter bag of the low pressure vacuum unit. Then the filtered exhaust air is conducted outside the building. A High Efficiency Particulate Air (HEPA) filter is used when there is not a possibility to conduct the air out of the facility