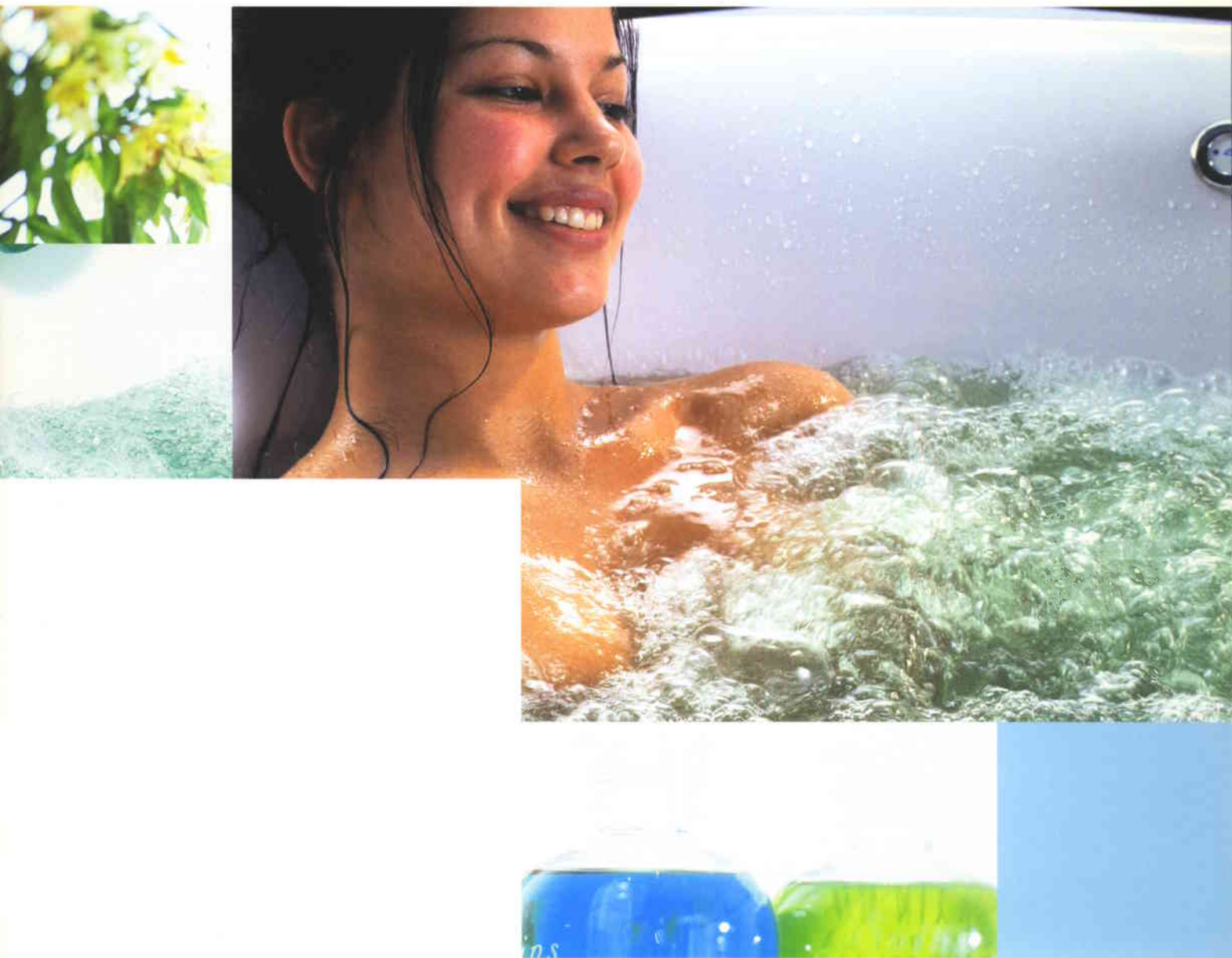


HURRICANE
SPA BATH 2190 OVAL

hydrotherapy spa bath



A clearly stimulating bathing experience

a spa bath with superior hygiene

SERIES 2000. For more than 10 years, Fjordbad has been at the forefront of whirlpool and spa bath design. As one of Norway's most innovative design houses, our continual research and development programme has ensured that the Hurricane is the most innovative, pleasurable and hygienic spa bath on the market.

INNOVATIVE - because of its unique hydrotherapy system, curved design and hygienic transparent base

PLEASURABLE - giving you a choice of three massage strengths, plus the luxury of an extra-deep tub for an all-over feeling of weightlessness

HYGIENIC - it's so easy to see when the bath needs cleaning, and the Hurricane needs no special chemicals to keep it virtually free from bacteria and other unpleasant micro-organisms

The Hurricane's ergonomics, aesthetics, high-performance materials and technical design combine to give the invigorating health benefits of a spa bath with superior hygiene.

HOW TO CLEAN The unique design of the Hurricane gives you complete confidence that the bath is completely spotless. Unlike ordinary spa baths, which are operated by a hidden network of tubes or inaccessible cavities where bacteria can flourish unseen, the Hurricane has transparent plates at the bottom of the tub so that any build-up of bacterial film can be identified immediately. The plates are easily loosened without any tools and the bath can be cleaned quickly and easily using just regular detergent and a sponge. No chemicals are needed, and with the Hurricane, you can clearly see that the bath is clean.

Further details about the Hurricane NonBac system are on our web site - www.spa-bath.com

HURRICANE



INTEGRATED CONTROLS PANEL For a superior streamlined appearance, Hurricane can be fitted with an optional integrated controls panel. This combines the standard operating devices with a built-in water supply and thermostat, giving you complete control over the temperature. The panel also incorporates an extractable shower hose, which retracts neatly into the side of the bath when not in use.

If the integrated panel should need attention at any time, it can be easily dismantled.



INNOVATIVE DESIGN The Hurricane 2190 oval bath has been designed for complete comfort, with soft curves echoing the contours of the body. The latest 3D computer design programs have been used to create the elegant and ergonomically curved design, unique to Fjordbad.

The design of the tub means that you are almost weightless - just your head and outer shoulders touch the curves. With a length of 136cm along the bottom of the tub, there's plenty of leg room and there's even plenty of room for two people to share.

The standard colour of the Hurricane 2190 oval bath is similar to white porcelain, to complement any bathroom decor. However if you fancy something a little different, it can be supplied in an endless variety of colours. Just send us a colour sample and we can match whatever colour you supply.

2190 OVAL

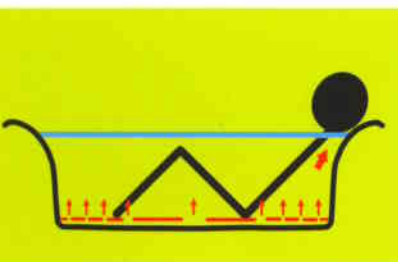
free from bacteria



ALTERNATIVE THERAPY. Although exceedingly comfortable, the Hurricane has not solely been designed for relaxation and pleasure. The combination of heat, weightlessness and stimulating massage will give you a feeling of positive well-being. The level of strain is radically reduced, muscle stiffness is alleviated and pain is relieved through the experience of complete relaxation and harmony. We recommend the addition of fragrant and low-foaming herbal bath oils for enhanced effects on both mind and body.

IMPROVED MASSAGE Whereas ordinary spa baths just give "spot massage" by pumping water through tubes and pipes to side jets, the Hurricane uses a completely different technique. With the Hurricane hydrotherapy bath, the water is set in motion through the unique use of a high volume of air, which is compressed under the bath's bottom plates and forced through an array of 56 specially designed and positioned holes. Each hole has a diameter of 6mm (3 to 4 times larger than in ordinary spa baths), and because the holes are placed in positions, which follow the contours of the body, the pleasurable massage effect is felt all over.

The perfect curve and shape of the inside of the tub, together with the strategic placement of the holes, results in increased movement of water behind your neck. Because of the internal shape, your backbone does not touch the tub, so permitting water to be pushed up against your neck. As a result you experience a more positive massage in this important part of your body than you would normally gain in an ordinary spa bath.



POWERFUL, NOISELESS PUMP To achieve a deep massage from an air system, a powerful air pump is required. To this end we have developed our own pump with a strength of 1238W (1.6hp). The pump has three levels of intensity for your desired massage strength - ranging from a gentle pulsation to a deep massage. And even at the deep massage setting, the uncomfortable "spot massage" effect is avoided - only a pleasurable sensation is felt.

The electric motor is encased in a shell of resin stone to prevent any unpleasant noise. Installation and future inspection of the pump is facilitated by the fact that the pump can be positioned up to 4 metres away from the tub. All electric installation takes place at the pump as the adjustment of the massage levels is controlled pneumatically.

A unique remotely-operated dual-purpose valve allows free airflow to the bath when closed, and also allows the Hurricane hydrotherapy bath to be 100 per cent self-draining when the valve is open.

HURRICANE 2190 OVAL
1900mm x 1170mm

Height	700mm
Internal depth	510mm
Bath level (one person)	250 - 300 litres approx
Bath level (two people)	200 - 250 litres approx
Overflow level	400 litres



10-year guarantee on GRP
5-year guarantee on components
Ask for details

MANUFACTURED BY:
Fjordbad AS

Hunsroedv, 18, N-3241 Sandefjord, Norway

DISTRIBUTED BY:
Norske Interiors (UK) Ltd

Estate Road One
South Humberside Industrial Estate,
Grimsby, UK
DN31 2TA

Tel: 01472 240832 - Fax: 01472 360112

E-mail: sales@norske-int.co.uk

www.norske-int.co.uk

www.spa-bath.com