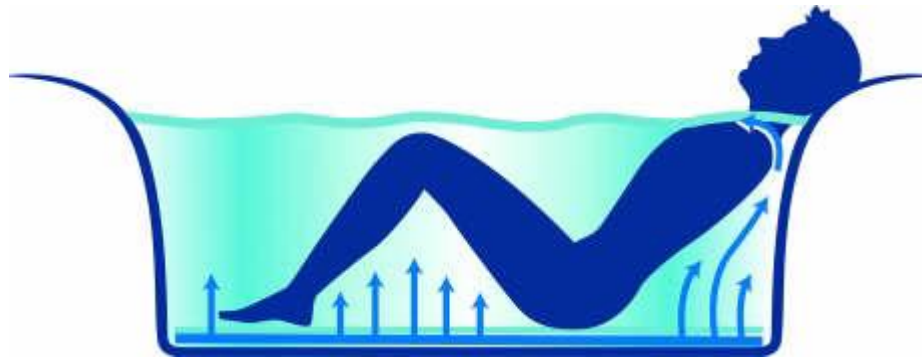


Why is the Hurricane Spa Bath Different?

Improved massage

Whereas ordinary spa baths just give “spot massage” by pumping water through tubes and pipes to side jets, the Hurricane uses a completely different technique. With the Hurricane hydrotherapy bath, the water is set in motion through the unique use of a high volume of air, which is compressed under the bath's bottom plates and forced through an array of 56 specially designed and positioned holes. Each hole has a diameter of 6mm (3 to 4 times larger than in ordinary spa baths), and because the holes are placed in positions, which follow the contours of the body, the pleasurable massage effect is felt all over.



The perfect curve and shape of the inside of the tub, together with the strategic placement of the holes, results in increased movement of water behind your neck. Because of the internal shape, your backbone does not touch the tub, so permitting water to be pushed up against your neck. As a result you experience a more positive massage in this important part of your body than you would normally gain in an ordinary spa bath.





Powerful, noiseless pump

To achieve a deep massage from an air system, a powerful air pump is required. To this end we have developed our own pump with strength of 1238W (1.6hp).

The pump has three levels of intensity for your desired massage strength - ranging from a gentle pulsation to a deep massage. And even at the deep massage setting, the uncomfortable "spot massage" effect is avoided - only a pleasurable sensation is felt.

The electric motor is encased in a shell of resin stone to prevent any unpleasant noise. Installation and future inspection of the pump is facilitated by the fact that the pump can be positioned up to 4 metres away from the tub. All electric installation takes place at the pump as the adjustment of the massage levels is controlled pneumatically.

A unique remotely-operated dual-purpose valve allows free airflow to the bath when closed, and also allows the Hurricane hydrotherapy bath to be 100 % self-draining when the valve is open.



Integrated controls panel

For a superior streamlined appearance, Hurricane can be fitted with an optional integrated controls panel. This combines the standard operating devices with a built-in water supply and thermostat, giving you complete control over the temperature. The panel also incorporates an extractable shower hose, which retracts neatly into the side of the bath when not in use.



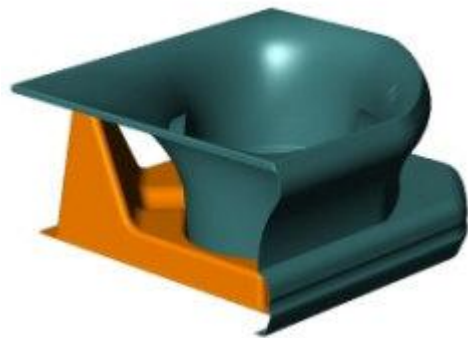
If the integrated panel should need attention at any time, it can be easily dismantled.



Innovative design

The Hurricane Spa Bath has been designed for complete comfort, with soft curves echoing the contours of the body. The latest 3D computer design programs have been used to create the elegant and ergonomically curved design, unique to Fjordbad.

The design of the tub means that you are almost weightless - just your head and outer shoulders touch the curves. The internal shape of the bottom gives increased length. As a result we offer more leg room and there's even plenty of room for two people to share.



The standard colour of the Hurricane Spa Bath is similar to white porcelain, to complement any bathroom decor. However if you fancy something a little different, it can be supplied in an endless variety of colours. Just send us a colour sample and we can match whatever colour you supply.



Alternative therapy

Although exceedingly comfortable, the Hurricane has not solely been designed for relaxation and pleasure. The combination of heat, weightlessness and stimulating massage will give you a feeling of positive well-being. The level of strain is radically reduced, muscle stiffness is alleviated and pain is relieved through the experience of complete relaxation and harmony. We recommend the addition of fragrant and slightly foaming herbal bath oils for enhanced effects on both mind and body.