

## Cantilever System

Build a shoring system that combines power, efficiency and dependability, and the good news travels fast... "TABLA Is Fast". Keep innovating as TABLA has, and you're not just a newsmaker, you're on your way setting industry standards.

An example is our Cantilever technology that maximizes efficiency, provides enormous safety on slab edges and turns difficult motion into opportunity.

Cantilevers create great wind sail and some authority estimates that the uplift wind on tall buildings can be as high as 40 lbs per sq. ft. This type of wind force is a formidable foe, exerting force far greater than a 120mph/190k/hr hurricane. "TABLA can handle it".

The Mounting Shoe can be attached to the edge of the slab with a self tapping concrete screw. The Guard Rail Section sits on the Shoe.

The upper "Guard Rail Section" is installed at the same time by pinning to the Panel and rotated up.

By use of the Cantilever Support Post (sometimes referred to as "raker"), the panel is now rotated into a horizontal position and the foot of the post is inserted into the Mounting Shoe, pinned into place.

When erecting and dismantling, it is only necessary to remove one Guard Rail Section at a time.

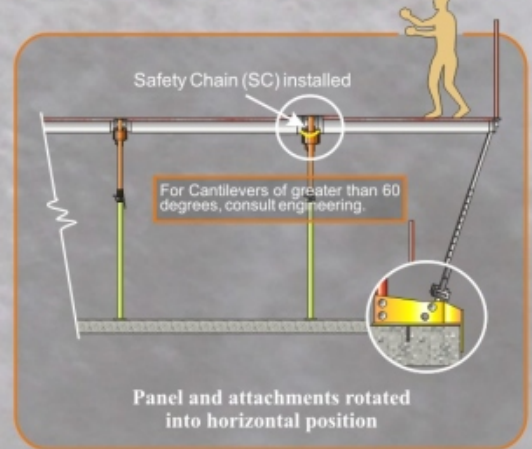
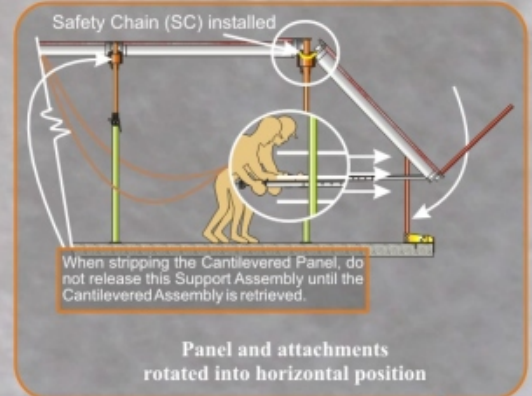
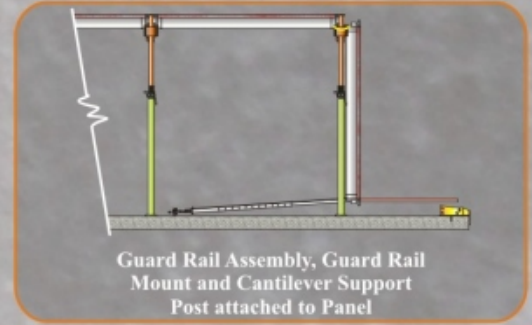
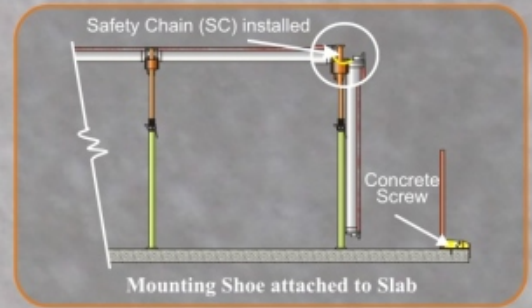
TABLA Guard Rail Sections are used for the edge of the TABLA Panel and for the perimeter edge protection on the floor below.

When attaching the Guard Rail Sections to TABLA Panel's this is done by inserting and pinning the Guard Rail Assembly to the Guard Rail Adapter, which has been affixed to the Panel.

Attaching the Guard Rail Sections to the slab is done by inserting and pinning the Guard Rail Assembly to the Mounting Shoes which has been securely affixed to the slab.

The Guard Rail Sections can be used as a template for installing the Mounting Bracket.

### Launching the Cantilever



## Architectural Devices

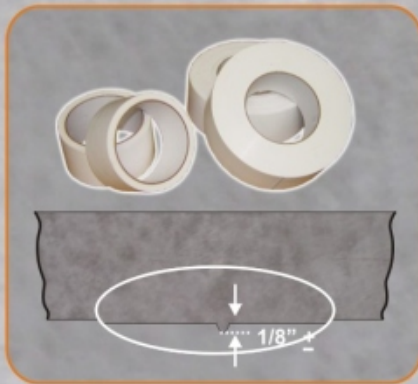
We could use all the ergonomic clichés like “fits like a glove” or “wears like a suit”. But from our point of view, none do TABLA justice.

Let's just say that TABLA's uniqueness is a pleasure to handle and a revelation on the job site. You're immersed in a high quality environment. All components feel just right and operate with precision.

In fact, we think you'll find that TABLA takes the definition of what is the definition of ergonomic design to a whole new level.

### ARCHITECTURAL BRIDGE STRIP (A.B.S.)

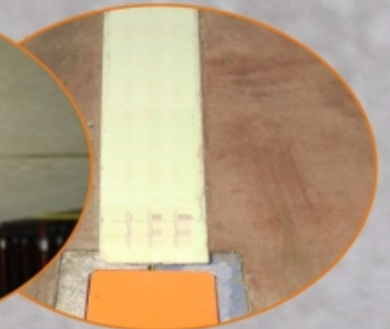
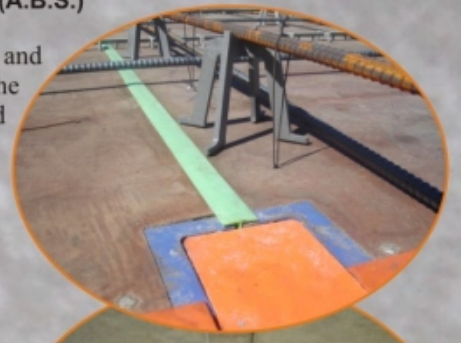
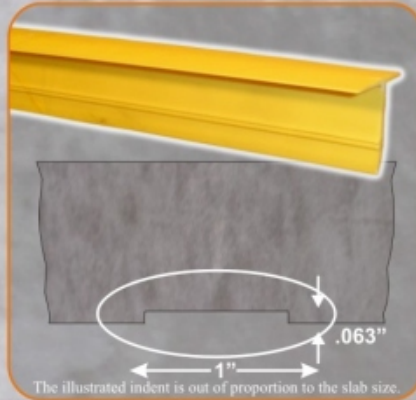
For a good-looking smooth finish, easy to finish and for a really smooth panel strip, use the ABS. This speciality tape is applied over the panel seams prior to pour.



### ARCHITECTURAL BRIDGE STRIP (A.B.S.)

#### “Strip and Walk”

For a good-looking finish, easy to finish and for a really smooth panel strip, use the ABS. This simple vinyl strip is inserted between the panels by foot prior to pour. This strip comes cut to length and has a retainer groove.

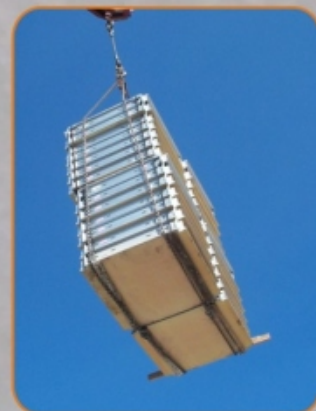
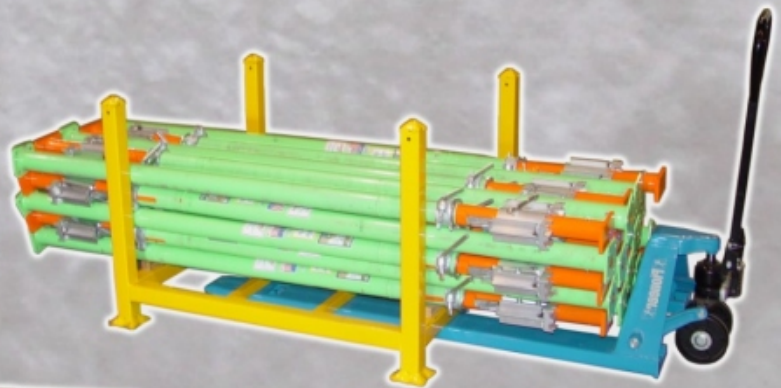


If you're not intent on being the best, why bother competing in the first place?



**Material Handling** Our attention to **DETAIL** will reward yours. With TABLA, quality and craftsmanship co-exist in quantity. Careful attention to detail, fit and finish is also the rule. After all, superlative quality and an exhilarating ownership experience go hand in hand. Now you can have it all without going to great lengths.

With TABLA Transporters, material handling on-site is made much easier.

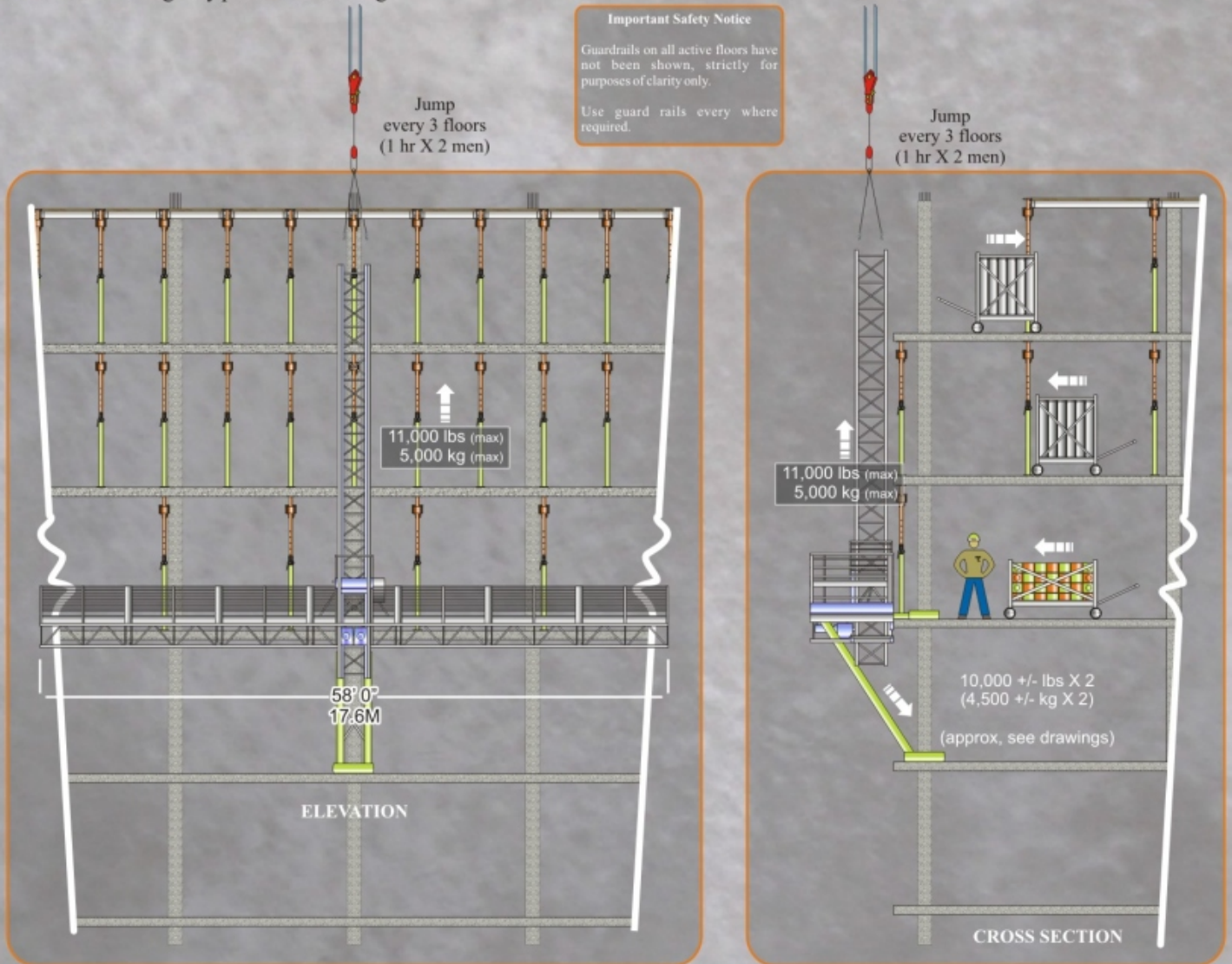


# TABLA<sup>®</sup> Lifter

The fact is, no other manufacturer offers quite the range we do. At TABLA we're tenacious believers in the notion that what can be made by man can ultimately be made better by man. Where others see technical obstacles or outrageous development costs, we see opportunity. An example of that is our TABLA Lifter.

The TABLA Lifter is designed to moving TABLA upwards, thereby, eliminating the need of a tower crane.

The AC-13TL has two independent drive units, which elevate the AC-13TL platform up two separate drive racks. This dual rack & pinion system provides twice the safety of a single drive machine. Each drive system also incorporates failsafe brakes and centrifugal clutches for emergency platform lowering.



## AC-13TL SPECIFICATIONS

### MAXIMUM CAPACITIES

Maximum Platform Length:	58 ft/17.6M
Maximum Load Capacity:	11,000 lbs @ 20'
	5,000 kg @ 20'
	8,000 lbs @ 58'
	3,300 kg @ 58'

Vertical Travel Speed**	25 ft per Minute
Maximum Distance between Ties:	26 ft
Basic Machine Weight:	9000 lbs

### MAST SECTION

Weight:	415 lbs / 5 ft
---------	----------------

### ELECTRICAL DATA

Power - Lifting Motor:	2 X 4.0 kW
Voltage Frequency:	460/230V 60Hz
Control Voltage Frequency:	110V 60 HZ
Power Supply Fuses:	32 Amps

### SAFETY EQUIPMENT

Travel Limit Switches	YES
Centrifugal Clutches	YES
Over-speed Safety Device (optional)	YES
Manual Lower of Platform	YES

**WARNING:** Long erection times will suddenly become much shorter

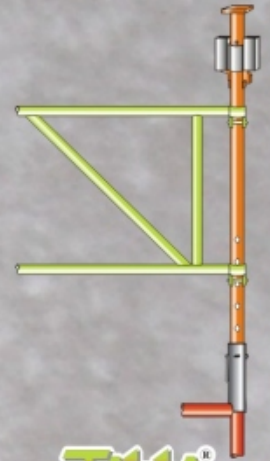




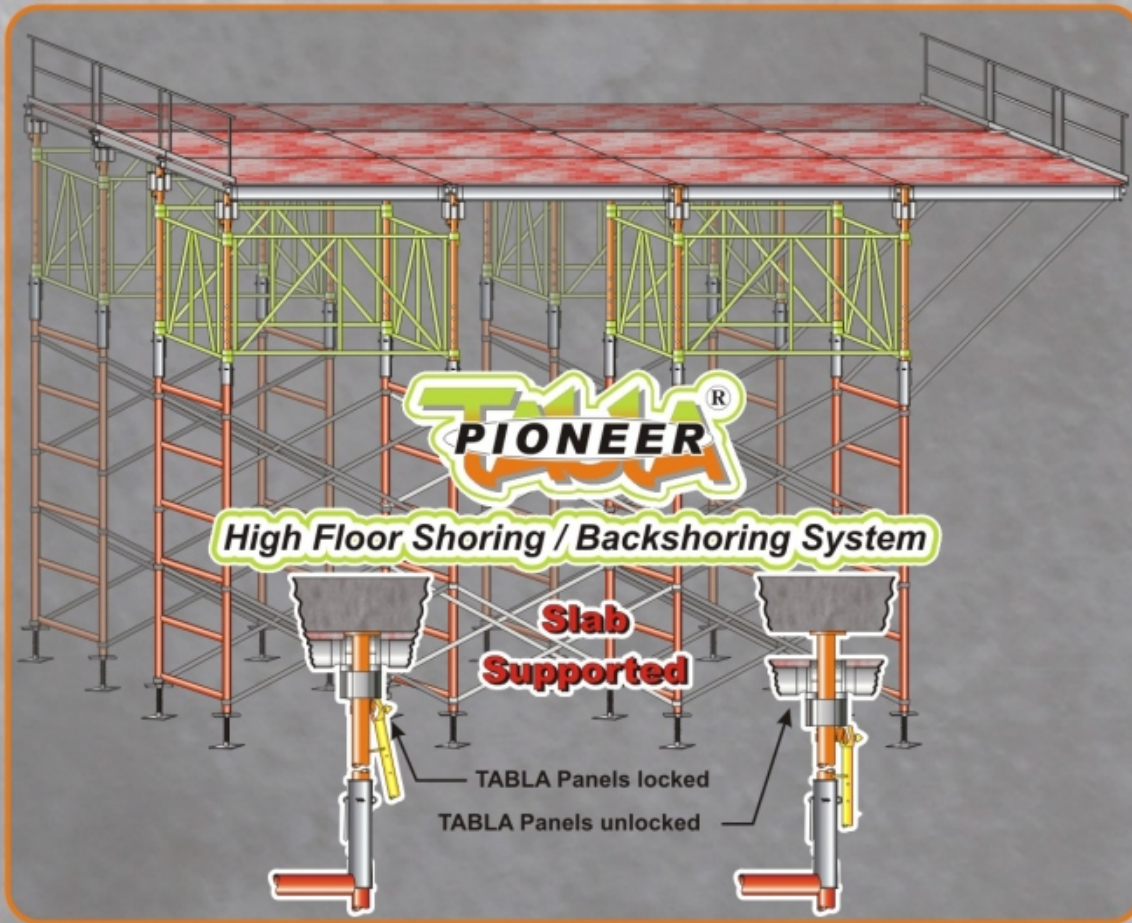
TABLA Pioneer is the high floor shoring system of choice for those with way too much to do. Life isn't always simple, and it isn't about doing the same thing over and over again. That's why the TABLA Pioneer is practical, rugged and comfortable all at the same time.

TABLA Pioneer challenges you to expand your definition of a high floor shoring system and then provides dramatic proof why ordinary alternatives are a bit behind in their thinking.

- ☑ Go to any height (subject to shoring tower specifications) & GAIN the TABLA advantage.
- ☑ Erect shoring towers using TABLA spacing template and TABLA Prop inner assembly.
- ☑ Drop TABLA Panels into position from above, snap in TABLA Heads and pour concrete.
- ☑ Drop TABLA Panels - backshoring stays in place.
- ☑ Using TABLA Pioneer - up to 34"/863 of concrete can be supported.



**TABLA PIONEER**  
TABLA Inner, Gate Brace  
& Coupler on top of  
Shoring Frames



**TABLA PIONEER**  
Special

<p>4' 4' 4' 4' 4'</p> <p>34" (863 mm) Concrete</p> <p>7,200 lbs leg load<sup>2</sup></p>	<p>4' 4' 4' 4' 4'</p> <p>32" (813 mm) Concrete</p> <p>10,800 lbs leg load<sup>2</sup></p>	<p>8' 8' 8'</p> <p>14" (356 mm) Concrete</p> <p>7,200 lbs leg load<sup>2</sup></p>
<p>Waco<sup>2</sup>, Patent<sup>2</sup>, Safway<sup>2</sup>, Anthes<sup>2</sup>, Formx<sup>2</sup>, Hi-Lite<sup>2</sup> &amp; Umaes<sup>2</sup></p> <p>(Climability<sup>1</sup>)</p>		

<p>4' 4' 4' 4' 4'</p> <p>32" (813 mm) Concrete</p> <p>10,800 lbs leg load<sup>2</sup></p>
<p>Aluma<sup>2</sup></p> <p>(No Climability<sup>1</sup>)</p>

1. Check the code, ordinances & regulations in your state / province / country for rules on climbing.  
2. Always check with manufacturer for S.W.L.



*"This is the best, the fastest, the safest system I have ever used.... and I have been on construction 35 years."*

**Serigo Nacinovich, Foreman**

*"After a weekend of sever high winds, TABLA was the only formwork still standing."*

**Dan Burt, President, DW Burt Construction**



**Cavaliere (Sir) Ezio Bortolussi**  
President  
Newway Concrete Forming Ltd.



**Sal Giantomaso**  
Vice President  
Newway Concrete Forming Ltd.

## **NEWWAY Concrete Forming Ltd.**

CONCRETE FORMING & PLACING • COMMERCIAL • RESIDENTIAL

October 27, 2004

Gillespie Practical Technologies Inc.  
117 Lakeshore Rd. East #340  
Mississauga, Ontario L5G 4T6  
Canada

Attention: Mr. Paul Gillespie

**Re: TABLA SLAB FORMING**

Dear Paul,

It was indeed a pleasure to see to finalize the Seattle and the Calgary projects with your "TABLA System".

Now that our forces have had the opportunity to familiarize with the system, we are starting to achieve some excellent result and more important our men are requesting the TABLA panels even before we start a new project.

We have been monitoring our production with TABLA and we are happy to confirm that we have reached some great results on the Hudson project in Vancouver. (ie. On a straight flat slab run a maximum of **250 sq. ft. per man hour**).

It has been refreshing to see this innovation in the forming system industry which has been dormant and reluctant for too long. The major feature of your TABLA is the simplicity and the few components of the system, but best of all is our capability of using non-skilled workers to put it together after only a few hours of training.

In times when carpenters and formworkers are quickly disappearing in huge numbers, your system has come to our aid to fill the big void due to the shortage of these skilled workers.

We compliment you and all of your associates for the fantastic job your are doing and we feel very proud to be associated with your company and to have been the first users of TABLA.

We look forward to a long lasting business relationship that will see our two companies grow and achieve all the desired targets.

Sincerely,

Newway Group  
Ezio Bortolussi, President

3711 1ST AVENUE, BURNABY, B.C. V5C 3V6 PHONE: (604) 299-3709 FAX: (604) 2

*"I knew TABLA was a winner when I saw the deck dropped away from the slab."*

**Grady Garrett, President - Garrett Construction**

*"TABLA strips like butter."*

**Tom Grant, Superintendent**

## TABLA Components List

No matter what your construction style requires you to build, TABLA is ready, willing and able to help you complete the job. TABLA serves up the whole package. A surprisingly complete combination of style, performance and practicality that's ready to take on almost every situation.

Inside every TABLA component, you'll find inspired engineering that marries meaningful protection and reassuring peace of mind with exhilarating performance. For example, TABLA has been erected as fast as 364 sq ft per man-hour. One more reason why, since its auspicious debut, TABLA has been awarded the *Attendees Choice & Experts Choice - Most Innovated Product, World of Concrete 2004*.



TABLA's safety philosophy means we're committed to implementing advanced safety technologies. All TABLA parts have been designed and tested to 4 times specifications, time and again.

Regardless of which TABLA components you choose, you can be assured that your TABLA was created in the TABLA tradition of innovation and safety. There's one other component that's integral to every component we make: our commitment to you, our customer.

Description	Weight lbs/kg	Description	Weight lbs/kg
<b>Props:</b> Extends to:		<b>Cantilever:</b>	
12'0" / 3657	68/31	Long Post	30/13½
10'6" / 3200	68/31	Short Post	27/12¼
12'0" / 3657	68/31		
<b>Panels:</b>		<b>Mounting Shoes:</b>	
4' x 2' / 1200x600	44/20	Edge	8½/4
4' x 4' / 1200x1200	37/17	Slab	8½/4
6' x 2' / 1800x600	45/21		
6' x 4' / 1800x1200	84/38	<b>Gate Braces:</b>	
8' x 2' / 2400x600	74/34	4' / 1200	12/5½
8' x 4' / 2400x1200	102/46	6' / 1800	14/6½
8' x 4' / 2400x1200 "A" Panel	104/47	8' / 2400	17/7¾
8' x 4' / 2400x1200 Telescopic Panel	106/48		
<b>Telescopic Beams:</b>		<b>Guard Rails:</b>	
3' / 914	7½/3½	4' / 1200 Panel	40/18
3' / 914 (Swivel End)	10½/4½	Post (post only)	10/4½
5' / 1524	15/7	Guard Rail Post Adapter - End	5/2¼
5' / 1524 (Swivel End)	18/8	Guard Rail Post Adapter - Side	5/2¼
10' / 3048	20/9		
10' / 3048 (Swivel End)	22/10	<b>Safety Devices:</b>	
<b>Hangers:</b>		Leg Safety Lock	½/¼
Telescopic Beam Hanger	10/4½	Outside Safety Lock	1/½
Telescopic Beam Extension	5/2¼	Safety Chain	1/½
Shearwall	4½/2	Utility Lock	¼/113g
<b>Wall Beams:</b>		<b>Architectural Devices:</b>	
2' / 600	2¼/1	2' / 600 Strip	
4' / 1200	4¼/2	4' / 1200 Strip	
		6' / 1800 Strip	
<b>End Filler Beams:</b>		8' / 2400 Strip	
2' / 600	4/2	Tape	
4' / 1200	7¼/3½	Tape Applicator	½/¼
<b>Side Filler Beams:</b>		<b>Misc Items:</b>	
4' / 1200	7¼/3½	Assembly/Disassembly Tool	15/6¼
5' / 1524	10/ 4½	Beam Form	20/9
6' / 1800	11¾/5½	Gravity Lock (End Filler)	2oz/57g
8' / 2400	15½/7	Gravity Lock (Side Filler)	2oz/57g
		Slab Band Edge Form	15/6¼

Style and affordability are no longer mutually exclusive



# TABLA Shoring {com} Construction Systems

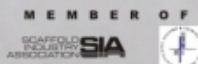
590 Commerce Parkway | Hays, KS 67601 USA  
 Ph: (877) 625-7510 (785) 625-8581 | Fax: (785) 621-2415 | [TablaShoring.com](http://TablaShoring.com) | [Sales@TablaShoring.com](mailto:Sales@TablaShoring.com)

Manufactured by:

**A-1 Scaffold & Shoring, L.L.C.**

500 Commerce Parkway  
 Hays, KS 67601  
 (785) 625-7510 • (800) 625-7510  
 Fax: (785) 625-8452

Email: [tabla@a1scaffold.com](mailto:tabla@a1scaffold.com)



Web: [a1scaffold.com](http://a1scaffold.com)

Designed by:



Toronto, ON • Canada L5G 4T6  
 Ph: (905) 844-5300 • Fax: (905) 844-5303

Email: [tabla@gillespietech.com](mailto:tabla@gillespietech.com)  
 Web: [gillespietech.com](http://gillespietech.com)

All illustrations and specifications in this brochure are based on the latest product information. TABLA Shoring Systems reserves the right to make changes at any time, without notice. Illustrations are not engineered and are for illustration purposes only.

**TAb1A**<sup>®</sup>  **IS FAST**

**TAb1A**<sup>®</sup> 



**MIP  
WINNER**

**TAb1A**, a proven high octane, high performance modular Shoring system  
For more information, contact **TAb1A** 1-877-625-7510 or visit us at **TAb1A Shoring** (com)

