

TA-R25

High performance proportional actuator



TA

Pressurisation & Water Quality › Balancing & Control › Thermostatic Control

ENGINEERING ADVANTAGE

Electromotor actuator which, when used together with pressure independent control valves KTM 512 DN 15-50, provides superb control. High IP class for reliable operation.

> **Manual operation**

Gears can be de-coupled in order to position the valve manually.

> **Manual setting**

Manual operation by using 6 mm Allen key.

> **Simple click-on connection**

For easy installation on the valve.



> Technical description

Applications:

TA-R25-24: For modulating, 3-point or on/off control.

TA-R25-F24: For fast control of tap hot water circuits or like wise.

TA-R25-230: For 3-point or on/off control.

Supply voltage:

TA-R25-24/-F24: 24V AC/DC $\pm 20\%$

TA-R25-230: 230V AC $\pm 15\%$

Frequency 50-60 Hz

Power consumption:

TA-R25-24/-F24: 5 W

TA-R25-230: 2 W

Control voltage:

TA-R25-24/-F24: DC 0-10 V, 3-point or 2-point (on/off).

TA-R25-230: 3-point or 2-point (on/off).

Control speed:

TA-R25-24: 8 or 16 s/mm

TA-R25-F24: 2,5 or 4 s/mm

TA-R25-230: 16 s/mm

Adjusting force:

TA-R25-24: 500 N

TA-R25-F24: 125 N

TA-R25-230: 500 N

Temperature:

Max. ambient temperature: 55°C

Min. ambient temperature: -10°C

Enclosure class:

IP 54 (EN 60529)

Cable:

TA-R25-24/-F24: Connection cable 5 x 0,5 mm².

TA-R25-230: Connection cable 3 x 0,5 mm².

Cable length: 1,2 m.

Stroke:

10 mm

Connection to valve:

Plastic bracket with brass nut for connection to the valve and automatic spindle connection. For connection to KTH or KTM 512 an adapter is needed.

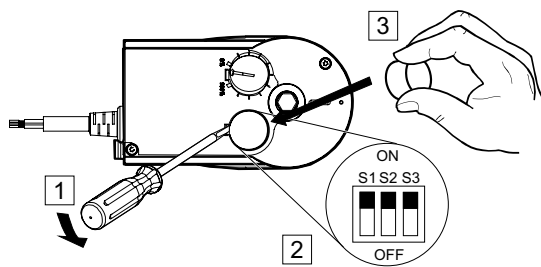
Colour:

Black body and red cover.

Marking:

TA, Article No, Product name and Technical specification.

Operating function



TA-R25-24 10 mm, 500 N

	S1	S2	S3
160 s	-	on	-
80 s	-	off	-
	-	-	on = lin.
	-	-	off = EQM
	on	on	on

TA-R25-F24 10 mm, 125 N

	S1	S2	S3
40 s	on	-	-
24 s	off	-	-
	-	on	on
Inv = %	-	off	on
	-	off	off
X ²	-	on	off
	on	on	on

TA-R25-24/-F24

Depending on how it is connected (see wiring diagrams), the actuators can be used as a modulating 0-10 V, as a 2-point (open/close) or as a 3-point drive (open/stop/close).

The running time can be matched to requirements using switch S2. The characteristic (equal-percentage or linear) can be selected via switch S3.

For manual adjustment disengage the gears (press sliding switch next to the power cable). Insert an Allen key into the hole on the actuator cover. Turn clockwise to close the valve and vice versa. A full stroke (10 mm) can be attained with 2 turns.

The motor will stop independent of the control signal.

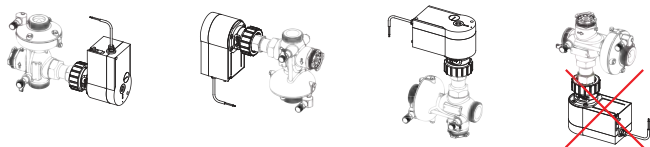
TA-R25-230

Depending on how it is connected (see wiring diagrams), the actuators can be used as a 2-point (open/close) or as a 3-point drive (open/stop/close). The speed and the characteristic of the actuator can not be adjusted.

For manual adjustment disengage the gears (press sliding switch next to the power cable). Insert an Allen key into the hole on the actuator cover. Turn clockwise to close the valve and vice versa. A full stroke (10 mm) can be attained with 2 turns.

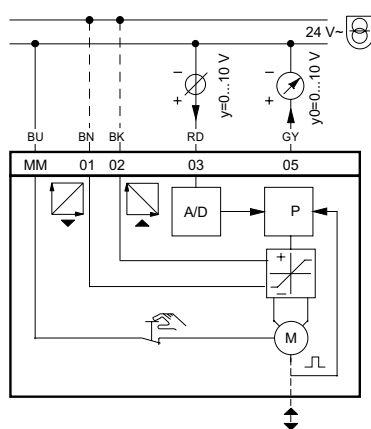
The motor will stop independent of the control signal.

Installation

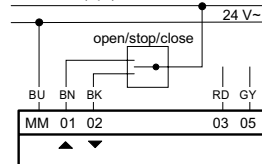


Wiring diagram:

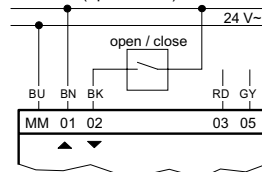
24 V, 0-10 V



Variant 1 (3pt)

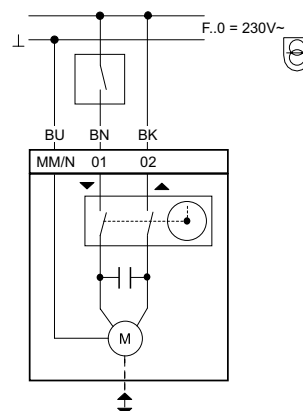


Variant 2 (2pt = on-off)

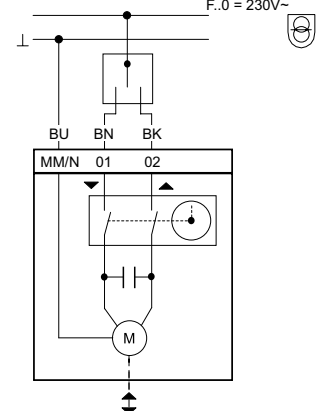


230 V

2-Pt.

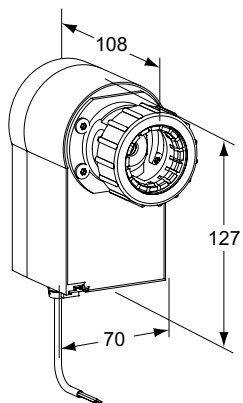


3-Pt.



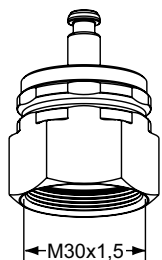
- RD = Red
- BN = Brown
- BK = Black
- BU = Blue
- GY = Grey

Articles



Article No	Cable length	Kg
TA-R25-24, 24 V AC/DC		
44 756-975	1,2 m	0,7
TA-R25-F24, 24 V AC/DC		
44 756-977	1,2 m	0,7
TA-R25-230, 230 V AC		
44 756-976	1,2 m	0,7

Adapter



Adapter TA-R25 – KTH/KTM 512
(DN 15-50)

Article No	EAN
52 757-031	

The products, texts, photographs, graphics and diagrams in this document may be subject to alteration by TA Hydraulics without prior notice or reasons being given.

For the most up to date information about our products and specifications, please visit www.tahydraulics.com.

6-10-28 TA-R25 03.2011