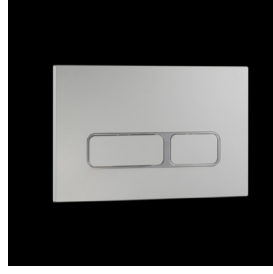
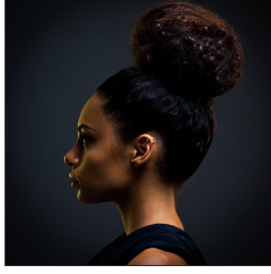
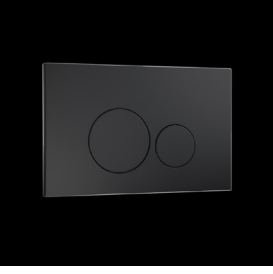
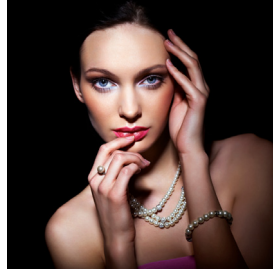
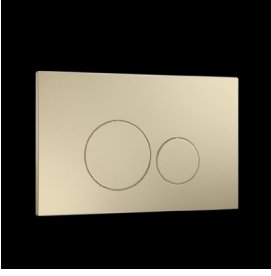
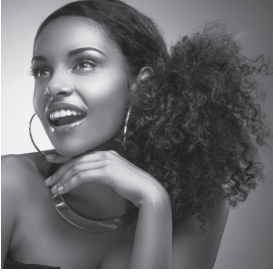
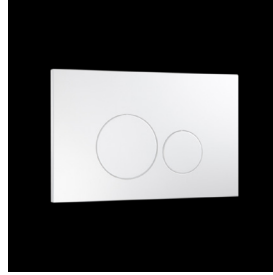
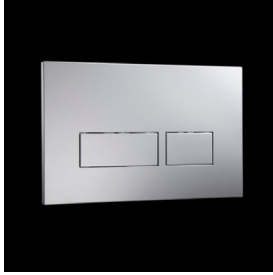
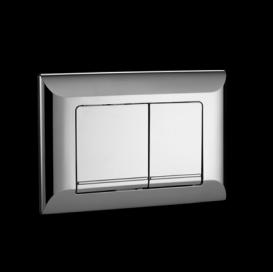
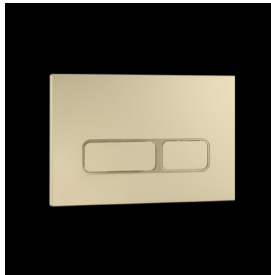
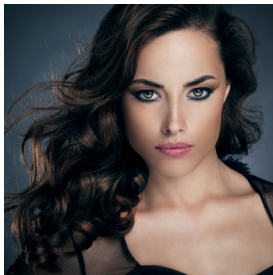


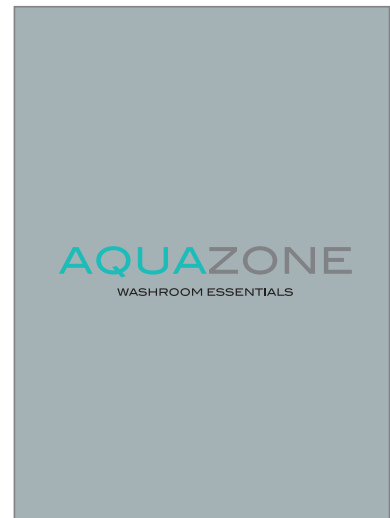
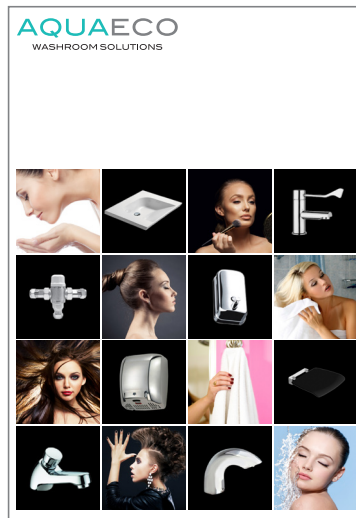
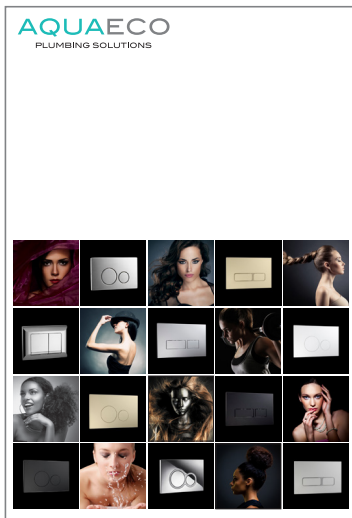
# AQUAECO

PLUMBING SOLUTIONS



# AQUAZONE

Oakwell Park Trading Estate  
Oakwell Way, Birstall, Leeds, England WF17 9LU  
Tel : +44 (0) 192 423 3977  
Fax : +44 (0) 192 423 3966  
info@aquazone-uk.com  
www.aquazone-uk.com



Aquazone UK was established in England in 2008 to manufacture and supply high quality plumbing products to the commercial project sector. The companies sub-brands have become well established in the UK and export markets supplying many prestigious projects.

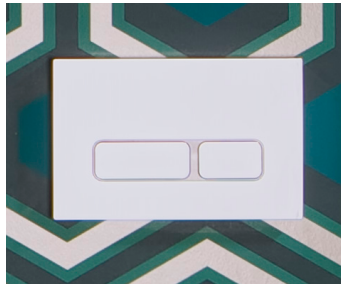
**AQUAECO**  
WASHROOM AND PLUMBING SOLUTIONS

**AQUADRAIN**  
DOMESTIC AND COMMERCIAL DRAINS

**AQUALIVING**  
CONTRACT SANITARYWARE AND MIXERS

# AQUAECO

PLUMBING SOLUTIONS



Aquaeco is a comprehensive collection of high quality plumbing solutions produced to the highest UK & European standards.



## INDEX

Flush Plates	.....	1-6
Concealed Cisterns	.....	7-9
Mechanisms	.....	10
Technical	.....	13-19





---

Flush Plate (Dual Flush)  
Polished Chrome Finish  
Code: AQE-K5231-K-ESG2



---

Flush Plate (Dual Flush)  
Matt Chrome Finish  
Code: AQE-K5231-K-ESG1



---

Flush Plate (Dual Flush)  
Gloss White Finish  
Code: AQE-K5231-K-ESG3



---

Flush Plate (Dual Flush)  
Matt Black Finish  
Code: AQE-K5231-K-ESG4

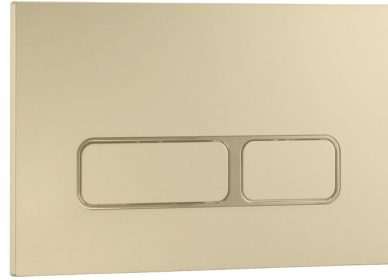
3





---

Flush Plate (Dual Flush)  
Polished Chrome Finish  
Code:AQE-K5132-K-ESG1



---

Flush Plate (Dual Flush)  
Gold Finish  
Code:AQE-K5132-K-ESG1-GD



---

Flush Plate (Dual Flush)  
Polished Nickel Finish  
Code:AQE-K5132-K-ESG1-PN



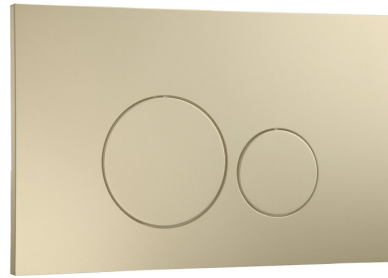
---

Flush Plate (Dual Flush)  
Stainless Steel Finish  
Code:AQE-K5080-K-ESG1



---

Flush Plate (Dual Flush)  
Polished Chrome Finish  
Code: AQE-K5230-K-ESG2



---

Flush Plate (Dual Flush)  
Gold Finish  
Code: AQE-K5230-K-ESG2-GD



---

Flush Plate (Dual Flush)  
Polished Nickel Finish  
Code: AQE-K5230-K-ESG2-PN



---

Flush Plate (Dual Flush)  
Gloss White Finish  
Code: AQE-K5230-K-ESG3-WH



---

Flush Plate (Dual Flush)  
Matt Black Finish  
Code: AQE-K5230-K-ESG4-MB





Flush Plate (Dual Flush)  
Chrome Finish with Matt Chrome Trim  
Code: AQE-K5130-K-ESG2



Flush Plate (Dual Flush)  
Matt Chrome Finish with Chrome Trim  
Code: AQE-K5130-K-ESG4



Flush Plate (Dual Flush)  
Chrome Finish  
Code: AQE-K5031-K-ESG3



Flush Plate (Dual Flush)  
Matt Chrome Finish  
Code: AQE-K5031-K-ESG2



Low Height Concealed Cistern for  
Wall Hung WC Front or Top Operation  
Adjustable Dual Flush 6/3L, 4.5/3L and/or 4/2L  
Frame Height 820 mm  
Thickness of Cistern 140 mm  
Galvanized Leg Supports, Adjustable from 0 - 20 cm  
Concealed Cistern Fully Insulated against Condensation  
For Installation in Dry Wall  
Water Supply Connection R 1/2"  
Flush Bend  
Protection Plug for Flush Pipes  
Protection Cover for Service Opening  
Threaded Rods M12 for Ceramics Fastening  
WC Connection Set, Dia. 90 mm  
WC Outlet Bend, HDPE, Dia. 90/110 mm  
Fastening Material



Includes AQE-K5132-K-ESG1 Push Plate  
Code: AQE-K201-A2-ESG1-CP



Includes AQE-K5230-K-ESG2 Push Plate  
Code: AQE-K201-A2-ESG2-CP

7



Concealed Cistern for Wall Hung WC Front Operation  
Adjustable Dual Flush 6/3L, 4.5/3L and/or 4/2L  
Frame Height 1140 mm  
Thickness of Cistern 120 mm  
Galvanized leg supports, Adjustable from 0 - 200 mm  
Concealed Cistern Fully Insulated against Condensation  
For Installation in Dry Wall  
Water Supply Connection R 1/2"  
Protection Plug for Flush Pipes  
Protection Cover for Service Opening  
Threaded Rods M12 for Ceramics Fastening  
WC Connection set, Dia. 90 mm  
WC Outlet Bend, HDPE or PVC, Dia. 90/110 mm  
with WC Outlet Connector  
with Fixing Kit  
Code: AQE-K130-A5-ESG1



Concealed Cistern for Wall Hung WC Front Operation  
 Adjustable Dual Flush 6/3L, 4.5/3L and/or 4/2L  
 Grey Universal Frame Height 1140 mm  
 Thickness of Cistern 80 mm  
 Galvanized Leg Support, Adjustable from 0 - 200 mm  
 Concealed Cistern Fully Insulated against Condensation  
 Water Supply Connection at the Top - R 1/2"  
 Flush Bend included  
 WC Connection Set, Dia. 90 mm  
 WC Outlet Bend, HDPE, Dia. 90/110 mm  
 with WC Outlet Connector  
 with Fixing Kit  
 Code: AQE-K301-A5-ESG I

8



Concealed Cistern for Wall Hung WC Front Operation  
 Adjustable Dual Flush 6/3L, 4.5/3L and/or 4/2L  
 Frame Height 1095 mm  
 Thickness of Cistern 80 mm  
 Galvanized Steel Frame  
 Concealed Cistern Fully Insulated against Condensation  
 Water Supply Connection at the Top - R 1/2"  
 Flush Bend Included  
 For Installation in Block Wall  
 with WC Outlet Connector  
 with Fixing Kit  
 Code: AQE-K301-B5-ESG I



Concealed Cistern for Back to Wall WC Front Operation  
Adjustable Dual Flush 6/3L, 4.5/3L and/or 4/2L  
Thickness of Cistern 80 mm  
Concealed Cistern Fully Insulated against Condensation  
Water Supply Connection at the Top - R 1/2"  
Flush Bend included  
Slotted flat irons for fixing  
with Fixing Kit  
Code: AQE-K301-D5-ESG I



Concealed Cistern for Furniture  
with Dual Flush Mechanism and  
Dual Flush Valve 6/3L and 5/3L  
Chromated Push Button for Flexible Installation  
Water Supply R 1/2" Bottom  
Adjustable Flush Bend  
with Dual Flush Push Button  
with Fixing Kit  
Code: AQE-B695-D2-ESG I



Bidet Support  
Grey Universal Frame Height 1140 mm  
Galvanized Leg Supports  
Adjustable from 0 - 200 mm  
Water Supply Connection R 1/2"  
Inlet Position is Adjustable from 60 - 350 mm  
Bidet Outlet Cend, HDPE, Dia. 30 - 46 mm  
Fastening Distance 180 mm or 230 mm  
with Fixing Kit  
Code: AQE-K601-L4-ESG I



**Side Inlet Mechanism**  
 Dual Flush - 3-6 Litres  
 Adjustable Float - Variation 100 mm  
 Pressure Ranges 0.3 - 10 bar  
 Connections - 3/8" in brass to convert to  
 1/2" Plastic AQE-B9352-ESG1 must be  
 purchased  
 Universal Installation for most  
 European WC Cisterns  
 Code: AQE-T001-SI



**Bottom Inlet Mechanism**  
 Dual Flush - 3-6 Litres  
 Adjustable Float - Variation 75 mm  
 Pressure Ranges 0.3 - 10 bar  
 Connections - 1/2" in plastic  
 Available With or Without Refill Function  
 Code: AQE-T001-BI



**Side Inlet Fill Valve**  
 Code: AQE-T002-SI



**Bottom Inlet Fill Valve**  
 Code: AQE-T002-BI



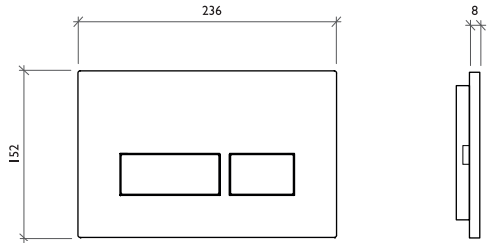
**Mechanism Converter Kit**  
 Converts AQS-T001-SI Side Inlet  
 Mechanism to be Used in a Back Inlet  
 Cistern that has a Cut Out  
 Includes Thread Converter, Clip and  
 Flexible Hose  
 Connects to 3/8" Male Connection  
 Code: AQE-B9352-ESG1







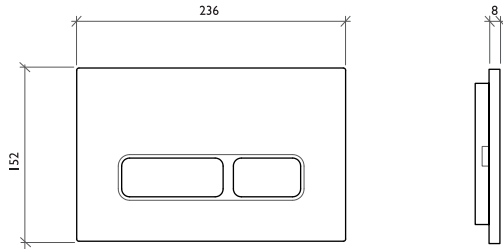
TECHNICAL





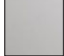
Flush Plate (Dual Flush)

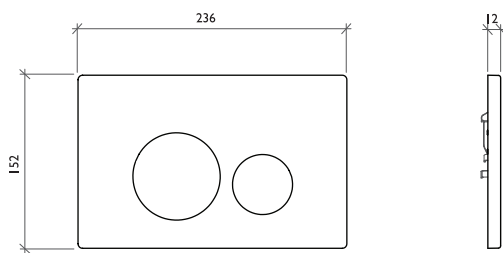
-  **Polished Chrome Finish**  
AQE-K5231-K-ESG2
-  **Matt Chrome Finish**  
AQE-K5231-K-ESG1
-  **Gloss White Finish**  
AQE-K5231-K-ESG3
-  **Matt Black Finish**  
AQE-K5231-K-ESG4

13



Flush Plate (Dual Flush)

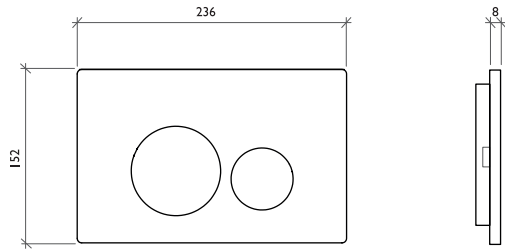
-  **Polished Chrome Finish**  
AQE-K5132-K-ESG1
-  **Gold Finish**  
AQE-K5132-K-ESG1-GD
-  **Polished Nickel Finish**  
AQE-K5132-K-ESG1-PN



Flush Plate (Dual Flush)

-  **Stainless Steel Finish**  
AQE-K5080-K-ESG1





Flush Plate (Dual Flush)

- 

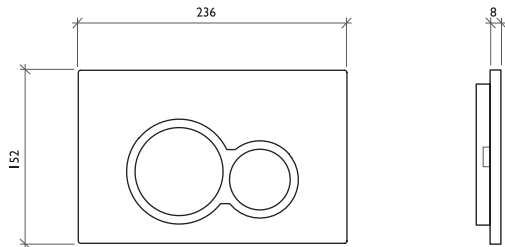
**Polished Chrome Finish**  
 AQE-K5230-K-ESG2
- 

**Gold Finish**  
 AQE-K5230-K-ESG2-GD
- 


**Polished Nickel Finish**  
 AQE-K5230-K-ESG2-PN
- 


**Gloss White Finish**  
 AQE-K5230-K-ESG3-WH
- 

**Matt Black Finish**  
 AQE-K5230-K-ESG4-MB

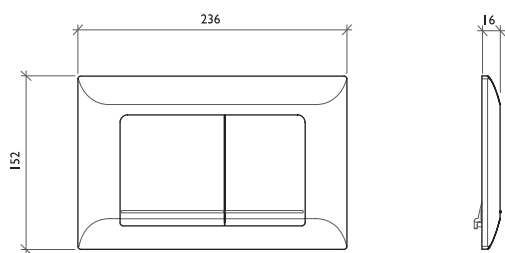


Flush Plate (Dual Flush)


- 


**Chrome Finish with Matt Chrome Trim**  
 AQE-K5130-K-ESG2
- 

**Matt Chrome Finish with Chrome Trim**  
 AQE-K5130-K-ESG4



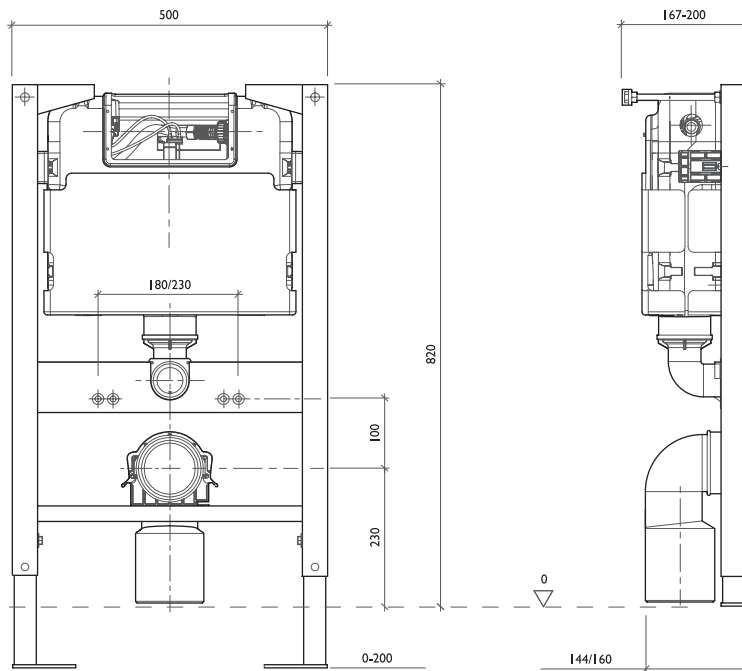
Flush Plate (Dual Flush)

- 

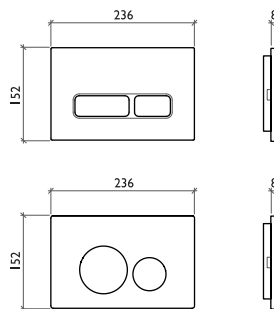
**Chrome Finish**  
 AQE-K5031-K-ESG3
- 

**Matt Chrome Finish**  
 AQE-K5031-K-ESG2

15

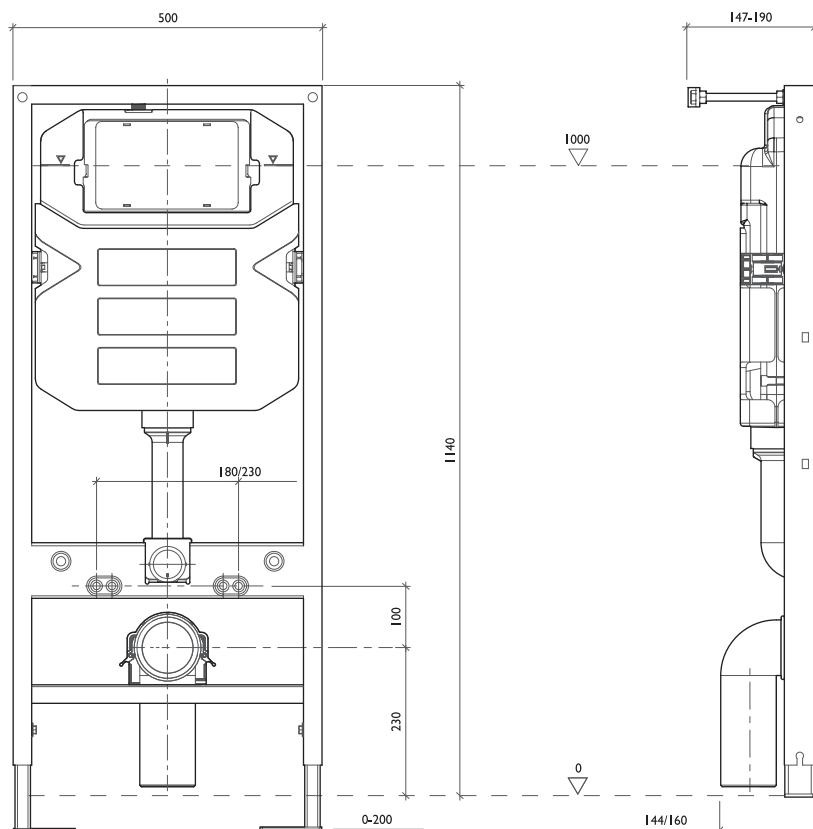


Low Height Concealed Cistern  
 for Wall Hung WC Front or Top Operation  
 Adjustable Dual Flush 6/3L, 4.5/3L and/or 4/2L  
 Frame Height 820 mm  
 Thickness of Cistern 140 mm  
 Galvanized Leg Supports, Adjustable from 0 - 20 cm  
 Concealed Cistern Fully Insulated against Condensation  
 For Installation in Dry Wall  
 Water Supply Connection R 1/2"  
 Flush Bend  
 Protection Plug for Flush Pipes  
 Protection Cover for Service Opening  
 Threaded Rods M12 for Ceramics Fastening  
 WC Connection Set, Dia. 90 mm  
 WC Outlet Bend, HDPE, Dia. 90/110 mm  
 Fastening Material

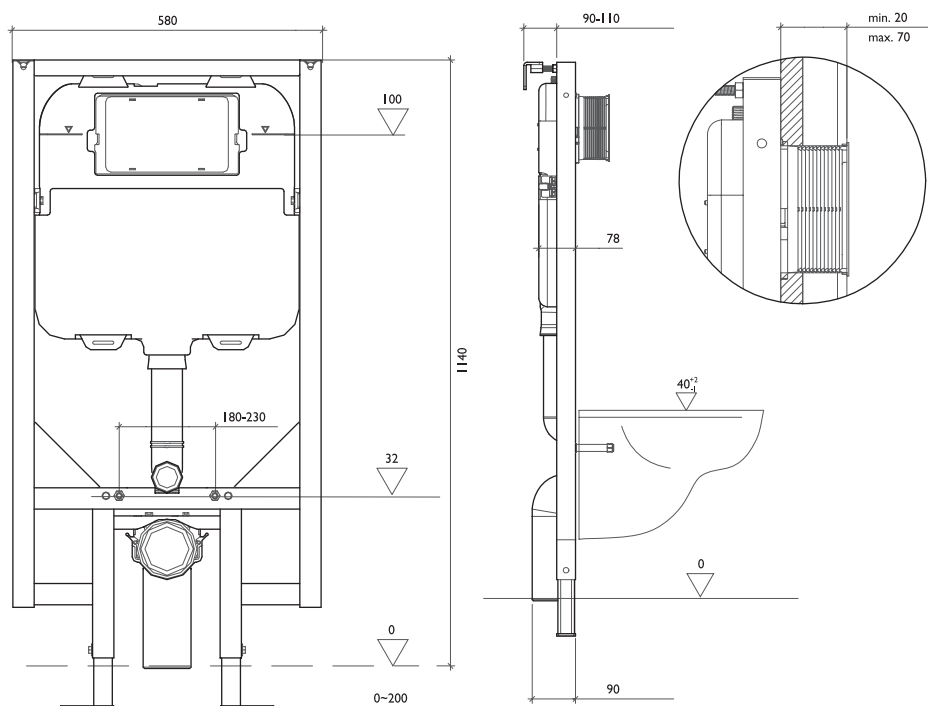


Includes AQE-K5132-K-ESG1 Push Plate  
 AQE-K201-A2-ESG1-CP

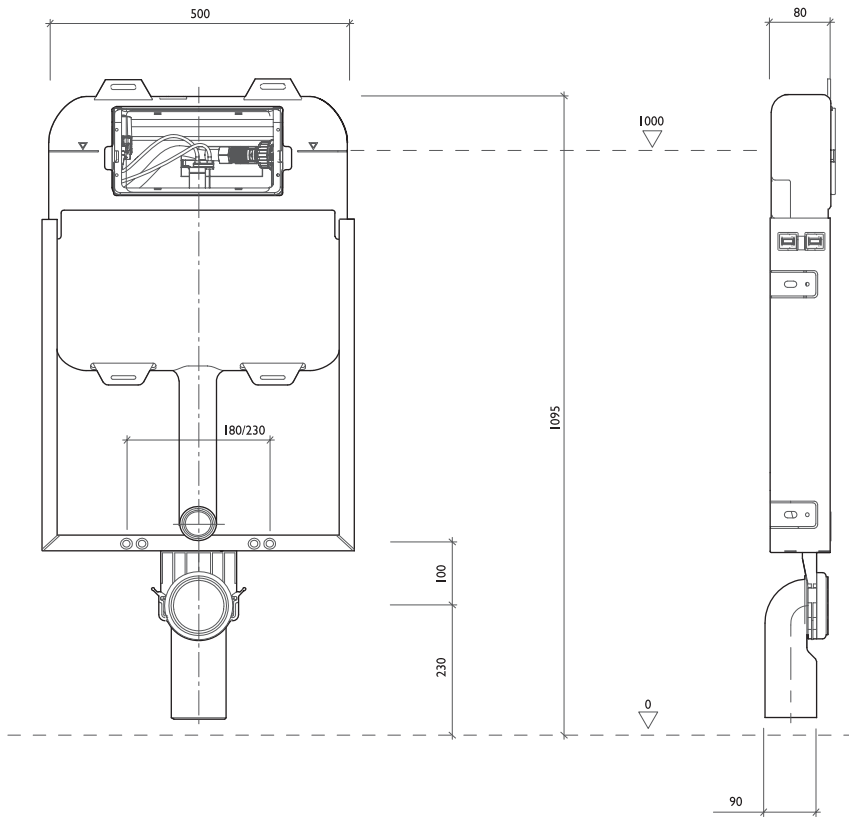
Includes AQE-K5230-K-ESG2 Push Plate  
 AQE-K201-A2-ESG2-CP



Concealed Cistern for Wall Hung WC Front Operation  
 Adjustable Dual Flush 6/3L, 4.5/3L and/or 4/2L  
 Frame Height 1140 mm  
 Thickness of Cistern 120 mm  
 Galvanized leg supports, Adjustable from 0 - 200 mm  
 Concealed Cistern Fully Insulated against Condensation  
 For Installation in Dry Wall  
 Water Supply Connection R 1/2"  
 Protection Plug for Flush Pipes  
 Protection Cover for Service Opening  
 Threaded Rods M12 for Ceramics Fastening  
 WC Connection set, Dia. 90 mm  
 WC Outlet Bend, HDPE or PVC, Dia. 90/110 mm  
 with WC Outlet Connector  
 with Fixing Kit  
 AQE-K130-A5-ESGI

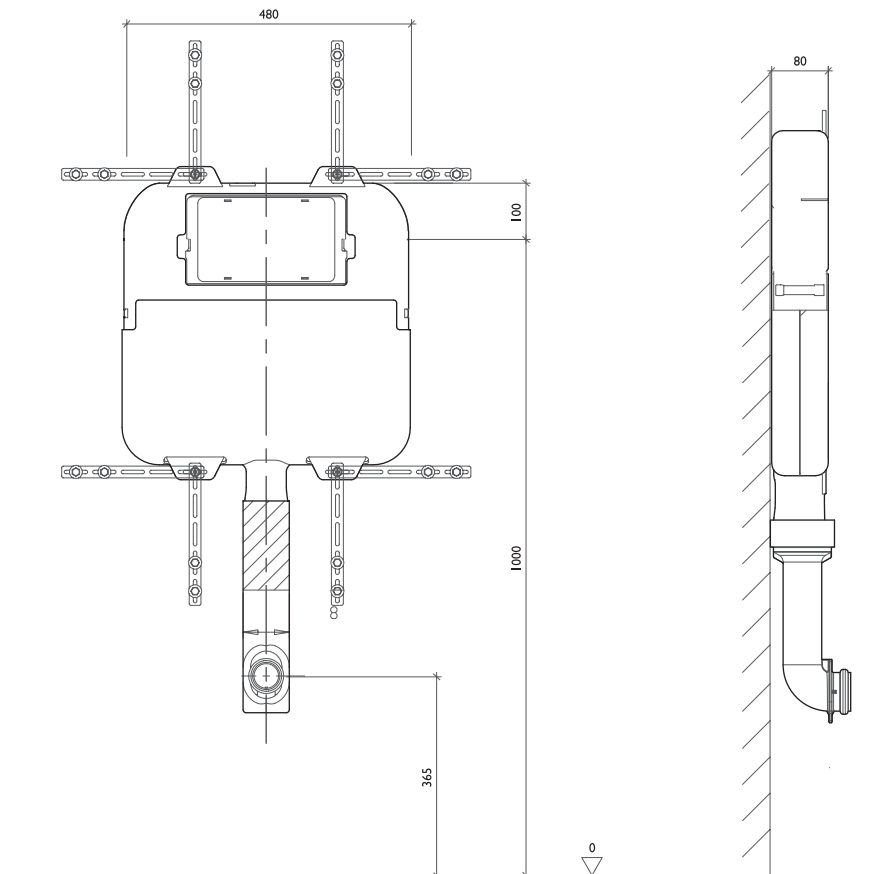


Concealed Cistern for Wall Hung WC Front Operation  
 Adjustable Dual Flush 6/3L, 4.5/3L and/or 4/2L  
 Grey Universal Frame Height 1140 mm  
 Thickness of Cistern 80 mm  
 Galvanized Leg Support, Adjustable from 0 - 200 mm  
 Concealed Cistern Fully Insulated against Condensation  
 Water Supply Connection at the Top - R 1/2"  
 Flush Bend included  
 WC Connection Set, Dia. 90 mm  
 WC Outlet Bend, HDPE, Dia. 90/110 mm  
 with WC Outlet Connector  
 with Fixing Kit  
 AQE-K301-A5-ESGI

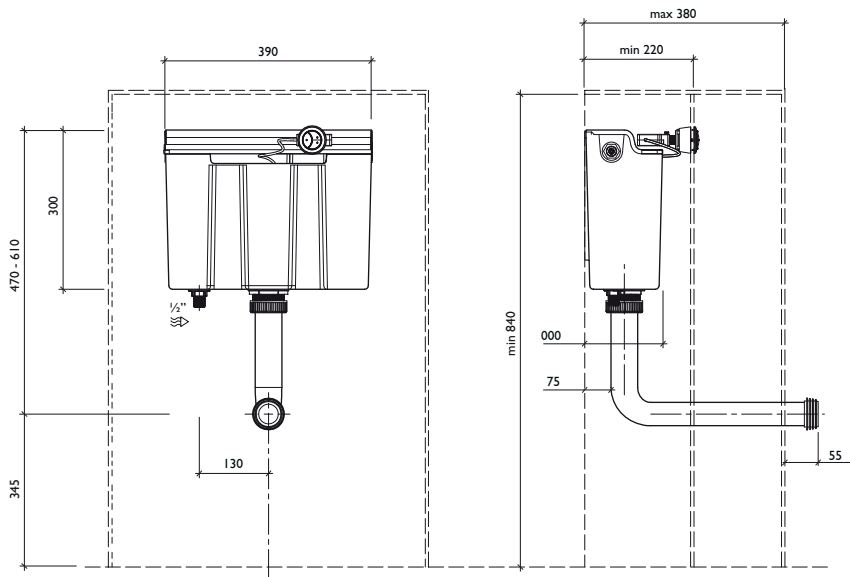


Concealed Cistern for Wall Hung WC Front Operation  
 Adjustable Dual Flush  
 6/3L, 4.5/3L and/or 4/2L  
 Frame Height 1095 mm  
 Thickness of Cistern 80 mm  
 Galvanized Steel Frame  
 Concealed Cistern Fully Insulated against Condensation  
 Water Supply Connection  
 at the Top - R 1/2"  
 Flush Bend Included  
 For Installation in Block Wall  
 with WC Outlet Connector  
 with Fixing Kit  
 AQE-K301-B5-ESG I

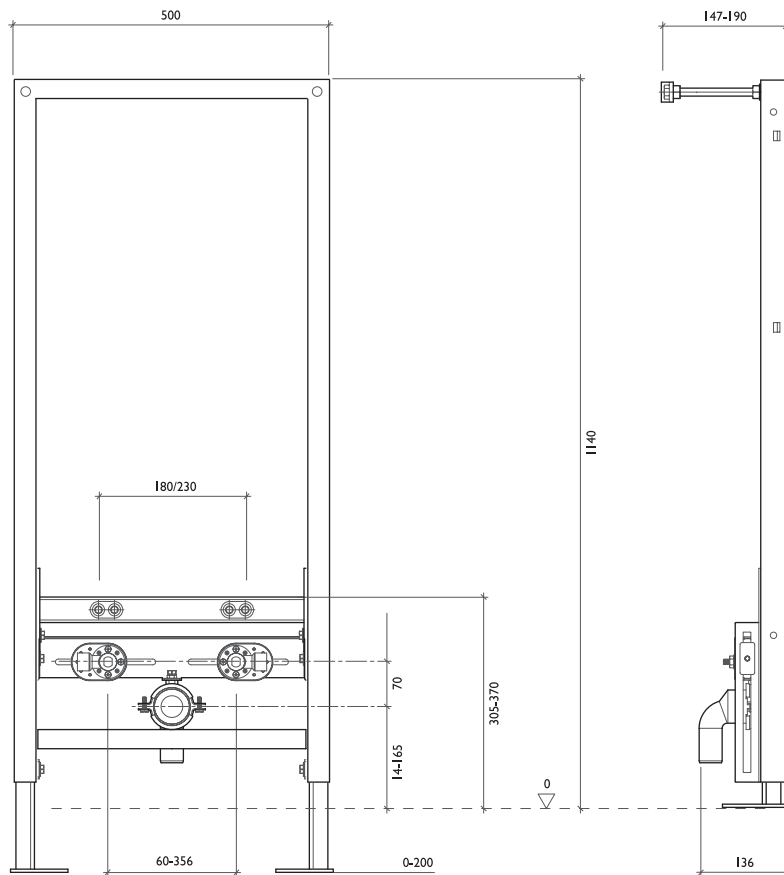
17



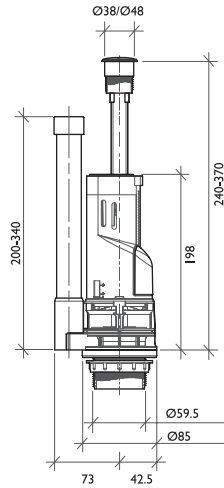
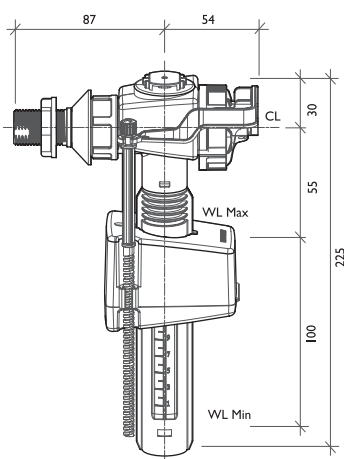
Concealed Cistern for Back to Wall WC Front Operation  
 Adjustable Dual Flush 6/3L, 4.5/3L and/or 4/2L  
 Thickness of Cistern 80 mm  
 Concealed Cistern Fully Insulated against Condensation  
 Water Supply Connection at the Top - R 1/2"  
 Flush Bend included  
 Slotted flat irons for fixing  
 with Fixing Kit  
 AQE-K301-D5-ESG I



Concealed Cistern for Furniture  
with Dual Flush Mechanism and  
Dual Flush Valve 6/3L and 5/3L  
Chromated Push Button for Flexible Installation  
Water Supply R 1/2" Bottom  
Adjustable Flush Bend  
with Dual Flush Push Button  
with Fixing Kit  
AQE-B695-D2-ESG I



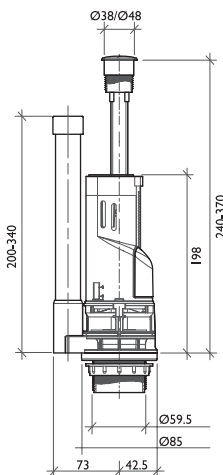
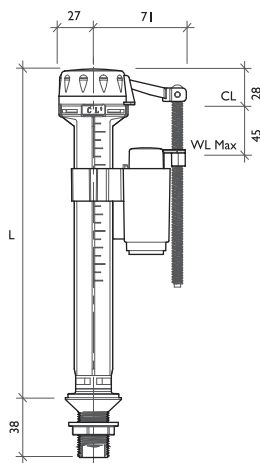
Bidet Support  
Grey Universal Frame Height 1140 mm  
Galvanized Leg Supports Adjustable from 0 - 200 mm  
Water Supply Connection R 1/2"  
Inlet Position is Adjustable from 60 - 350 mm  
Bidet Outlet Cend, HDPE, Dia. 30 - 46 mm  
Fastening Distance 180 mm or 230 mm  
with Fixing Kit  
AQE-K601-L4-ESG I



Side Inlet Mechanism  
 Dual Flush - 3-6 Litres  
 Adjustable Float - Variation 100 mm  
 Pressure Ranges 0.3 - 10 bar  
 Connections - 3/8" in brass to convert to 1/2" Plastic  
 AQE-B9352-ESG1 must be purchased  
 Universal Installation for most  
 European WC Cisterns  
 AQE-T001-SI

Side Inlet Fill Valve  
 AQE-T002-SI

19



Bottom Inlet Mechanism  
 Dual Flush - 3-6 Litres  
 Adjustable Float - Variation 75 mm  
 Pressure Ranges 0.3 - 10 bar  
 Connections - 1/2" in plastic  
 Available With or Without Refill Function  
 AQE-T001-BI

Bottom Inlet Fill Valve  
 AQE-T002-BI



# PROJECTS



New York University, ABU DHABI



Tribeca Square Elephant and Castle,  
LONDON



The Wave, OMAN



Shadagh Resort, AZERBAIJAN

# AQUAZONE

Oakwell Park Trading Estate  
Oakwell Way, Birstall, Leeds, England WF17 9LU  
t +44 (0) 192 423 3977  
f +44 (0) 192 423 3966  
info@aquazone-uk.com  
www.aquazone-uk.com