



Some of our Projects



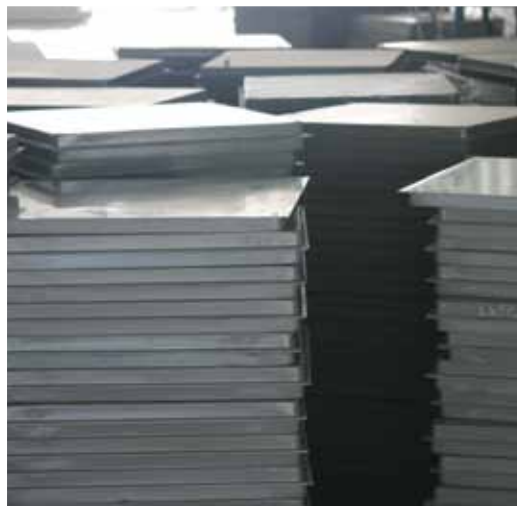


ALDAR Properties Headquarters

Abu Dhabi, United Arab Emirates

55,000 m²

This project used the WF series galvanized finish panels with T3 pedestals. The finished floor height is 150mm.





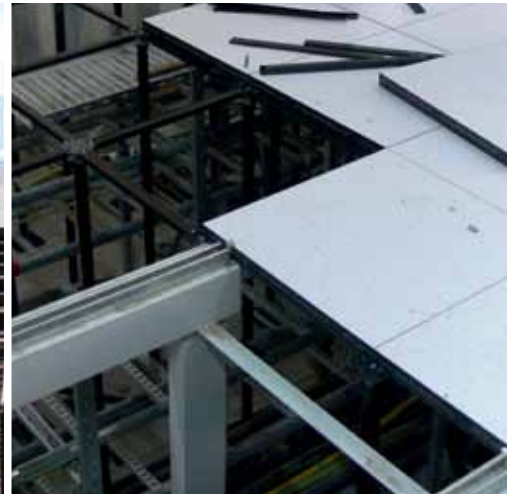
Gold and Silver Towers

Dubai Multi Commodities Center

Jumeirah Lake Towers, Dubai, United Arab Emirates

70,000 m²

This project used the CF series panel with T3 pedestals. The floor height was 150mm. Due to the complex shape of the towers, over size panels were used in the perimeters.



Al Aweer Gas Turbine Power Station

Dubai, United Arab Emirates

3,500 m²

This project used the CWC series HPL panels with the T8 heavy duty pedestals. The finished floor height was 1,500mm.



Al Hitmi Office Building

Doha, Qatar

14,000 m2

This project used the CF series panel with T3 pedestals. The floor height was 150mm. Due to the complex shape of the structure oversize panels were also used at the perimeters.



Arcapita Bank Headquarters

Bahrain Bay, Bahrain

16,500 m2

This project used the CF series panels. Installed at 120 mm finished floor height. A special panel size of 675 mm x 675 mm was custom made for this project.





Westpac Head Office

Sydney, Australia

72,000 m²

This project used the CF series panel with the T3 pedestals. The floor height was 150mm. The panels were installed with a bare finish, then the ASP One to One Tile carpet tile system was applied to the panels.



ABN AMRO Back Office Centre

Dubai, United Arab Emirates

11,000 m2

This project used the CF series panels with bare and HPL finishes with T6 and T3 pedestals. The finished floor height was 150mm.



Calyon Bank - Regional Head Office

DIFC, Dubai, United Arab Emirates

700 m2

This project used the CF Series panels with bare finishes on T3 pedestals with a finished floor height of 150 mm.





Royal Bank of Scotland - Regional Head Office

DIFC, Dubai, United Arab Emirates
1,250 m²

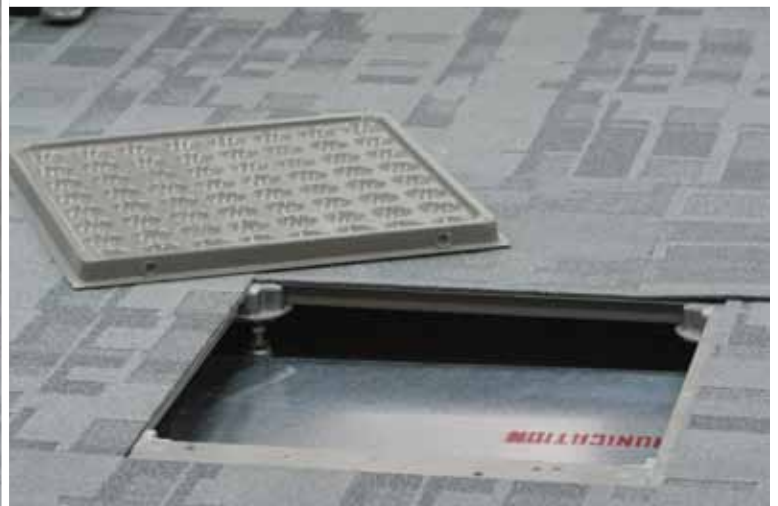
This project used the CF and Glass panels with bare finishes on T3 pedestals with a finished floor height of 180 mm.



Zurich Bank - Regional Head Office

DIFC, Dubai, United Arab Emirates
1,500 m²

This project used the CF Series panels with bare finishes on T3 pedestals with a finished floor height of 150 mm.





The 'Galleries', by Limitless

Downtown Jebel Ali

Dubai, United Arab Emirates

78,000 m²

This project used CF series panel with bare finishes and T3 pedestals. The floor height was 150mm. Material was delivered at over 10,000 m² per week. Floor installation of 4,200 m² per week was achieved. ASP received client feedback on the quality of raised floors, installation and performance on site.





Dubai Logistics City Headquarters

Dubai, United Arab Emirates

22,000 m²

This project used the CF series bare finish panel with T3 pedestals. The finished floor height was 110mm. The ASP versatile carpet system was installed on the bare panels.



Atlantis, The Palm

Dubai, United Arab Emirates

3,300 m²

This project used CF series panels with the T5 pedestals with four different floor heights from 1000mm to 300mm.





IBM Office

Dubai Media City, United Arab Emirates
2,260 m2

This project used the CF Series panels with bare finishes on T1 pedestals with a finished floor height of 100mm.





Capital Plaza

Abu Dhabi, United Arab Emirates

25,000 m²

This project used the CF series bare panels. Installed at a floor height of 150mm. A range of special and custom finishes were then applied to the panels.



Limitless Headquarters

Dubai, United Arab Emirates

9,500 m²

This project used CF series panels with bare finishes and T3 pedestals. The floor height was stepped to receive various finishes including carpet, marble, ceramics and granite.



U Bora Sales Office

Dubai, United Arab Emirates

2,000 m2

This project used the CF series bare finished panels. Installed at 150mm finished floor height with a carpet finish.



Dubai Healthcare City

Dubai, United Arab Emirates

3,500m2

This project used CF series panels with the T3 pedestals with a finished floor height of 300mm.



Nortel Networks

Sydney, Australia

7,300 m2

This project used the CF series bare and HPL finished panels. Installed at various floor heights a range of special and custom finishes were then applied to the panels.



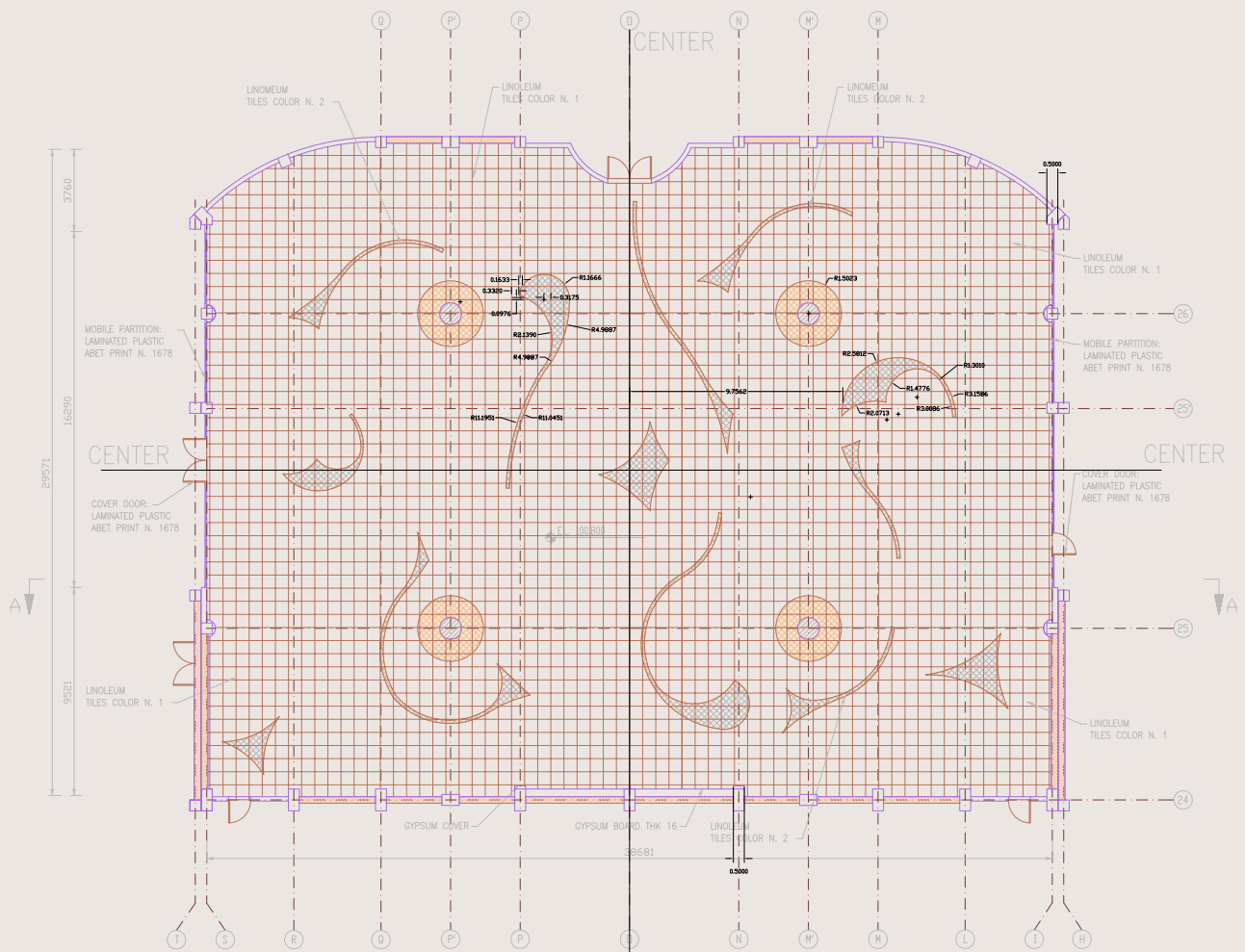
Vodafone

Sydney, Australia

8,600 m2

This project used the CF series bare, HPL and vinyl finished panels. Installed at various floor heights a range of special and custom finishes were then applied to the panels.





Aramco

Damman, Kingdom of Saudi Arabia

2,200 m²

This project used the CF series anti-static vinyl finished panels with a custom design. Installed at 600mm finished floor.



11 Towers Residence and Hotel

Dubai, United Arab Emirates

800 m²

This project used the anti static CSC series panels. Installed at 300mm finished floor height with a HPL finish.



Abu Dhabi Finance Center

Abu Dhabi, United Arab Emirates

5,500m²

This project used CF series panels with the T3 pedestals with a finished floor height of 150mm.



ADNEC Tower

Abu Dhabi, United Arab Emirates

500 m²

This project used CF series panels with the T3 pedestals with a finished floor height of 150mm.





Bahrain Financial Harbour

Bahrain

22,000 m2

This project used the CF series bare finished panels. Installed at 150mm finished floor height with a carpet finish.



Masdar Institute of Science and Technology

Abu Dhabi, United Arab Emirates

7,000 m2

This project used the CF series bare and Vinyl finished panels. Installed at various floor heights a range of special and custom finishes were then applied to the panels.



Palladium

Dubai, United Arab Emirates

3,000 m2

This project uses the CF series bare and HPL finished panels. Installed at various floor heights with carpet finish.



Yas Island Formula 1 Track

Abu Dhabi, United Arab Emirates

9,000 m²

This project used CF and WF series bare and HPL finished panels. Installed at various floor heights with heavy duty pedestals up to 1.8m high a range of special and custom finishes were then applied to the panels.





Al Qassar Office Tower

Doha, Qatar

22,000 m2

This project used the CF series bare finished panels. Installed at 150mm finished floor height with a carpet finish.



ANZ Head Office

Melbourne, Australia

84,000m2

This project used CF series bare finished panels with air tight stringers and T3 pedestals with a finished floor height of 450mm.



Bendigo Bank Head Office

Bendigo, Australia

14,000 m2

This project used CF series bare finished panels with air tight stringers and T3 pedestals with a finished floor height of 450mm.



Air Traffic Control Tower

Maktoum International Airport

Dubai, United Arab Emirates

9,500 m²

This project used the CF series bare and vinyl finished panels. Installed at 500mm finished floor height with a carpet finish.



Canberra International Airport

Canberra, Australia

10,000m²

This project used the CF series bare finished panels. Installed at 150mm finished floor height with a carpet finish.



Ministry of Foreign Affairs

Abu Dhabi, United Arab Emirates

7,300 m²

This project used the CF series bare finished panels. Installed at 150mm finished floor height with a carpet finish.



MBC Studios

Dubai, United Arab Emirates

1,000 m²

This project used the CF series bare finished panels. Installed at 150mm finished floor height with a carpet finish.





Sheikh Zayed Mosque

Abu Dhabi, United Arab Emirates

250 m²

This project used extra heavy duty CF series HPL finished panels. Installed at 500mm finished floor height.



Emal Smelter

Dubai, United Arab Emirates

2,000m²

This project used heavy duty CF series HPL finished panels. Installed at 600mm finished floor height.



Ritz Carlton Hotel

Dubai, United Arab Emirates

500 m²

This project used CF series Vinyl finished panels with a finished floor height of 300mm.



Jumeirah Beach Residence

Dubai, United Arab Emirates

1,250 m²

This project used CF series HPL finished panels with a finished floor height of 300mm.

Qatar Gas Phase 2 Onshore Plant

Doha, Qatar

8,500 m²

This project used the anti static CWC series vinyl finished panels. Installed at 600mm finished floor height.



O-14 Tower

Dubai, United Arab Emirates

2,000m²

This project used CF series panels with the T3 pedestals with a finished floor height of 150mm.



Media One Tower

Dubai, United Arab Emirates

300 m²

This project used CF series HPL finished panels with a finished floor height of 300mm.



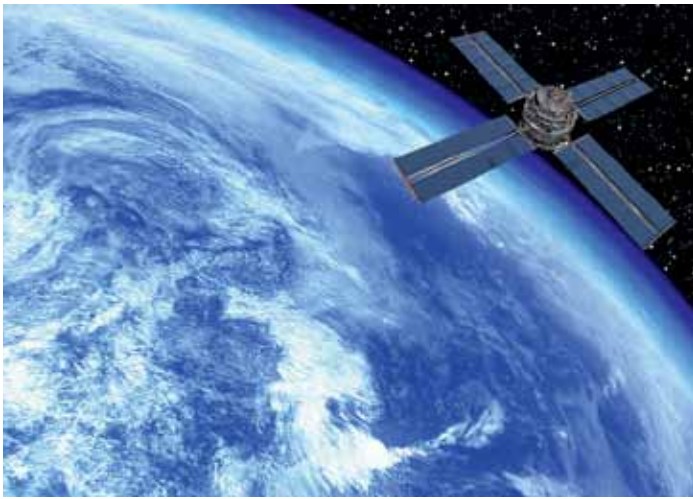
Dubai International Airport T2

Dubai, United Arab Emirates

450 m²

This project used CWC series Vinyl finished panels with a finished floor height of 150mm.





Al Yahsat Satellite Station

Abu Dhabi, United Arab Emirates

6,000 m²

This project used the CF series bare and HPL finished panels. Installed at various finished floor heights.



Dubai Metro

Dubai, United Arab Emirates

3,000 m²

This project used customised stainless steel pedestals and stingers installed at 350mm finished floor height.



Cairo International Airport

Cairo, Egypt

3,000 m²

This project used the CF series bare and HPL finished panels. Installed at various floor heights a range of special and custom finishes were applied to the panels.



Borg El Arab Airport

Alaxandria, Egypt

1,000 m²

This project used the CF series bare and HPL finished panels. Installed at various floor heights a range of special and custom finishes were applied to the panels.

Al Bahar Tower

Abu Dhabi, U.A.E.

30,000m².

CF 4.5 with T3 pedestal 200mm.

ASP Acoustic and fire Barriers and
Grommets.



Al Dar Central Market Office Tower

Abu Dhabi, U.A.E.

80,000m².

FEW 3.7 and 4.5 with T7 pedestals.





The Buildings by Daman

DIFC, Dubai, U.A.E.

60,000m2.

CF Series - Airtight system with
T3 pedestal 460mm and AT6
stringer.



Zayed University

Abu Dhabi, U.A.E.

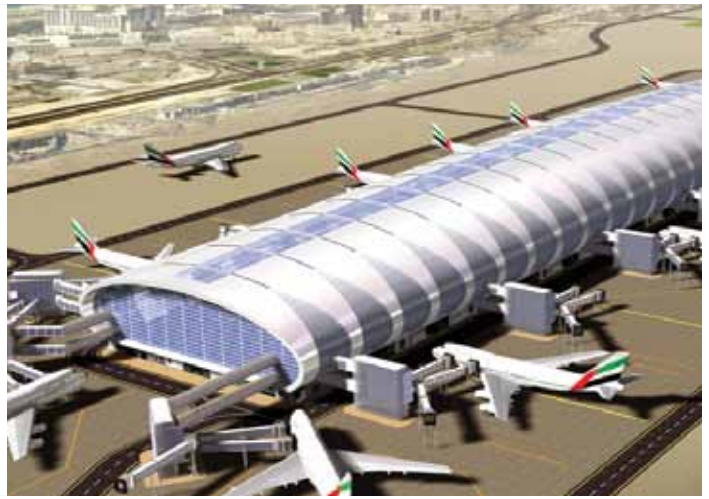
CF4.5 HPL with T6 pedestal 500mm
and SG6 stringer

Dubai International Airport Concourse 3

Dubai, U.A.E.

30,000m².

Carpet tiles, broadlooms, vinyl and
matting systems.



Sky Tower

Al Reem Island, Abu Dhabi

4000m²

CF4.5 with T3 pedestal 150mm and
CF4.5 with HPL.



Presidential Flight State

Abu Dhabi, U.A.E.

Guest Reception Terminal

200m² CF 4.5 with T3 and T6

Pedestal System



Backlays Bank

Dubai, U.A.E.

800m².

CF4.5 Base with T3 150mm Pedestal.

CF 4.5 HPL System was used on
technical rooms with T6 Pedestal
SG6 stringer.





Meydan Race Course

Dubai, U.A.E.

2000m2

CF4.5 with T3 pedestal System.



Cleveland Clinic

500m2

Abu Dhabi, U.A.E.

Aluminium series AST Stringless system with T11 & T12 Pedestals.

The panel had Factory bounded noraplan rubber finish.



Khalifa Port Industrial Zone

Abu Dhabi, U.A.E.

2000m2

CF 4.5 HPL & bare carpets & Vinyl.

T3 & T6 300-800mm

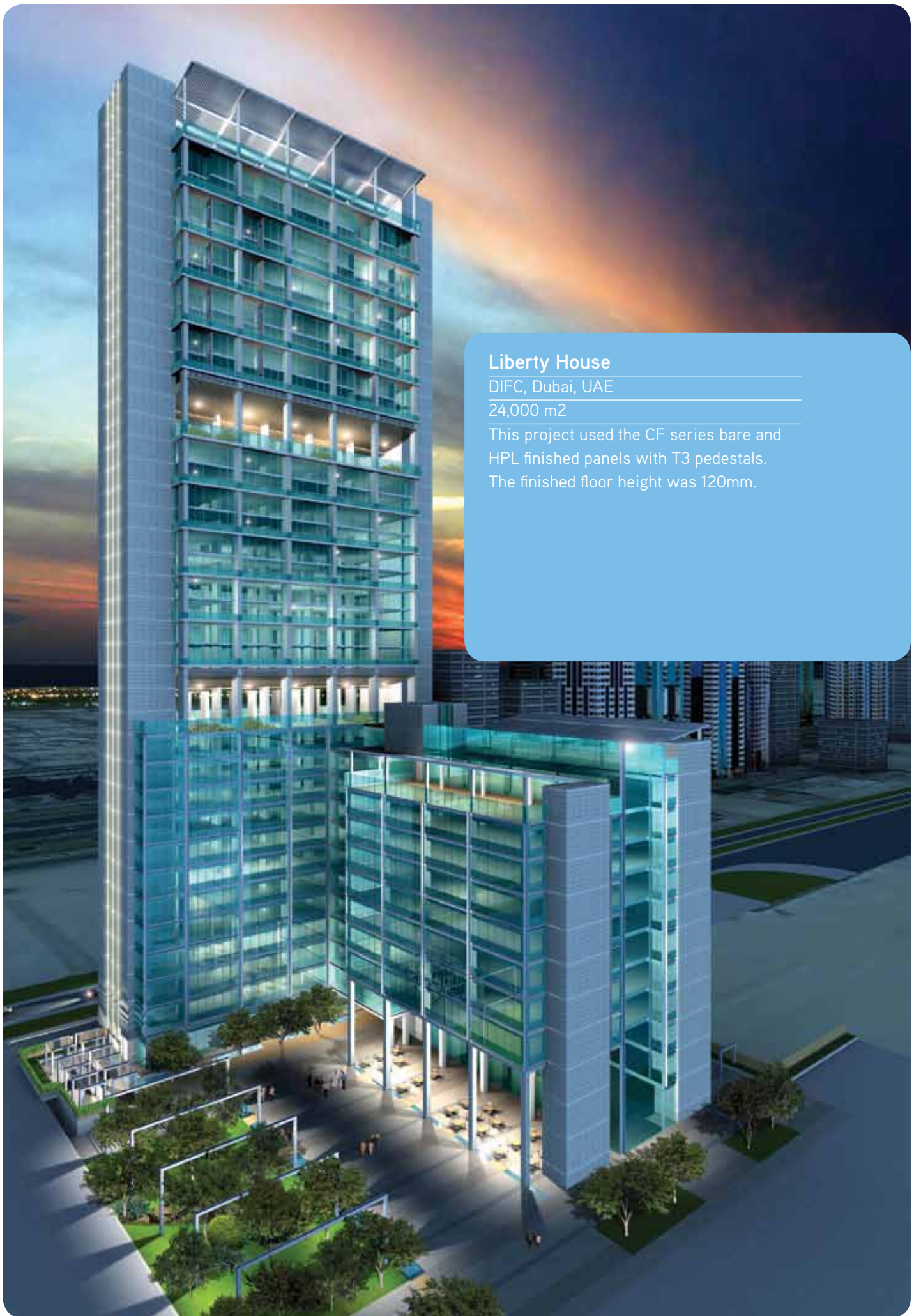


Two Four 54

Abu Dhabi, U.A.E.

4000m2

CF4.5 bare with T1 120mm pedestal System. CF 4.5 HPL was used in technical rooms with T6 pedestal & SG6 Stringer.

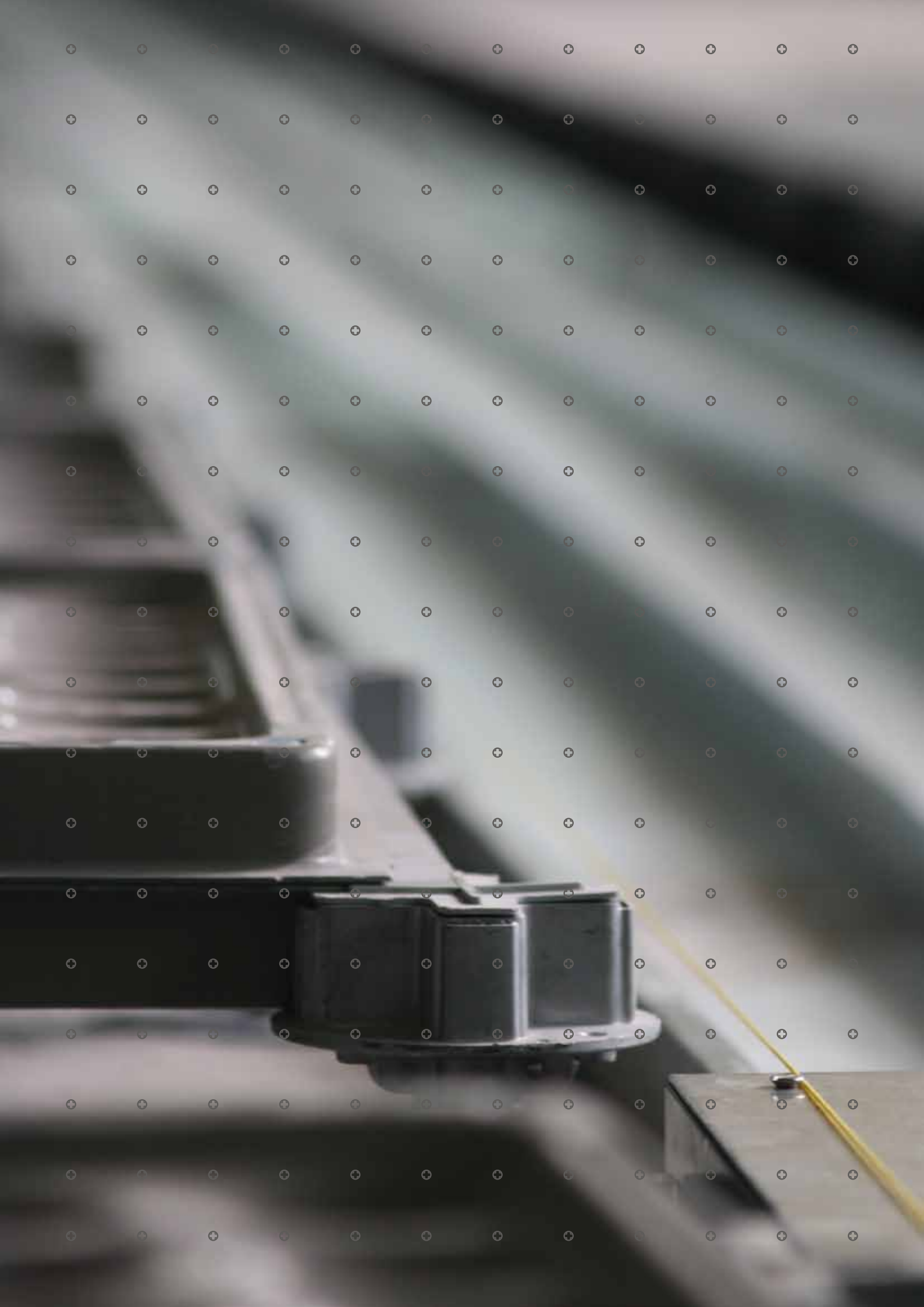


Liberty House

DIFC, Dubai, UAE

24,000 m²

This project used the CF series bare and HPL finished panels with T3 pedestals. The finished floor height was 120mm.





ASP Access Floors LLC
P.O.Box 124629, Dubai
United Arab Emirates
T / +971 4 454 1667
F / +971 4 454 1659
E / sales@asp.biz
www.asp.biz

Principal Office
ASP Access Floors Pty Ltd
32 Prime Drive
Seven Hills, 2147, NSW
Sydney Australia
T / + 61 2 9620 9915
F / + 61 2 9092 9918
E / sales@aspfloors.com.au
www.aspfloors.com.au