

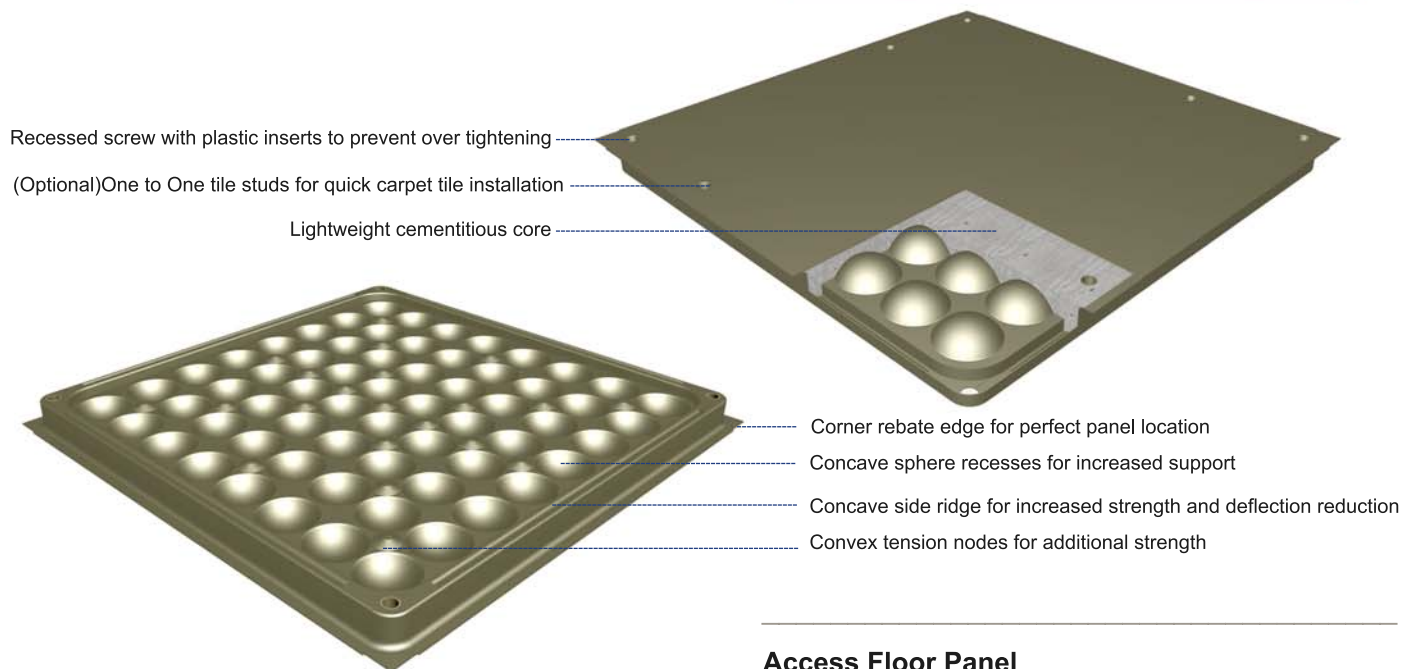
Technical Specifications

Application

- ☐ General Office
- ☐ General Commercial
- ☐ Industrial and Heavy Duty Facilities
- ☐ Equipment, Server, and Telephone Rooms
- ☐ Mission Critical, Control Facilities

Environmental Attributes

- LEED Rated
- Green Star Rated
- > 50% Recycled Content
- Access floor buy back scheme
- Certified by Future Build (MASDAR)
- Certified by Green label Singapore
- Member of GBCA (Green Building Council Australia)



Acoustic Performance

- Patented System No. 2006200759
- Normalised Noise Isolation 51 dB
- In built impact noise absorption
- Vibration reduction system

Panel Surface Finishes

- ☐ Bare - Ready to receive any surface finish
 - ☐ Anti - Static High Pressure Laminate (HPL)
 - ☐ Vinyl ☐ Ceramic ☐ Marble
 - ☐ Timber ☐
- Edge Trim Options
- ☐ No Trim ☐ Integral trim ☐ Plastic trim

Access Floor Panel

Type:	CF Series - Cement filled steel panel.
Size:	600mm x 600mm
Depth:	34.5mm
Function:	Completely interchangeable.
Construction:	All steel, pressure formed and welded with 110 welds.
Core:	High strength cement compound with aluminum fibres for added strength with unique sound deadening qualities.
Tolerance:	Size and squareness tolerance- +/-0.25mm. Flatness tolerance - +/-0.5mm.
Life Span:	+25 years.
Coating:	Phosphate corrosion resistant priming coat and baked epoxy powder coat finish.
Connection:	Positive engagement, screw fixed with plastic insert to prevent over tightening.
Panel Edge:	Rebated to receive expansion system.

Technical Specifications

Panel Performance

Panel	Panel (kg)	System (kg/m ²)	Static Performance (kN)				Dynamic Performance (kN) - Cycles		
			Concentrated	Impact	Ultimate	Uniform	10 Wheel size (mm) (75 x 25)	10,000 Wheel size (mm) (150mm x 50)	40,000 Wheel size (mm) (200 x 75)
<input type="checkbox"/> CF3.7	14.0	40	3.7	0.55	14.7	9.4	3.5	2.7	2.25
<input type="checkbox"/> CF4.5	14.5	42	4.5	0.67	16.9	12	4.5	3.6	2.25
<input type="checkbox"/> CF5.7	15.5	45	5.7	0.69	22.3	14.4	5.6	4.5	2.25
<input type="checkbox"/> CF6.8	17.0	49	6.8	0.78	26.7	18	6.7	5.6	2.25
<input type="checkbox"/> CF8.9	18.5	53	8.9	0.89	31.2	24	8.9	8.0	2.25

• Deflection: The access floor panels shall have a deflection during application of the specified concentrated load not exceeding 2.00mm with a permanent set deflection not exceeding 0.1mm. the permanent set deflection achieved during application of the specified uniform load shall not exceed 2.0mm.

Factor of Safety

• The access floor will be Heavy-Grade, with a safety factor of three times the concentrated (design) load, and is capable of meeting heavy static and dynamic loads per AS 4154 - 1993 Australian Standard - General Access Floors and (PSA) "Method of Building Performance Specification 'Platform Floors (Raised Access Floors)", MOB PF2 PS and BS EN 12825 and CISC94.

Fire Safety

Classification: Non Combustible

Ignitability: 0

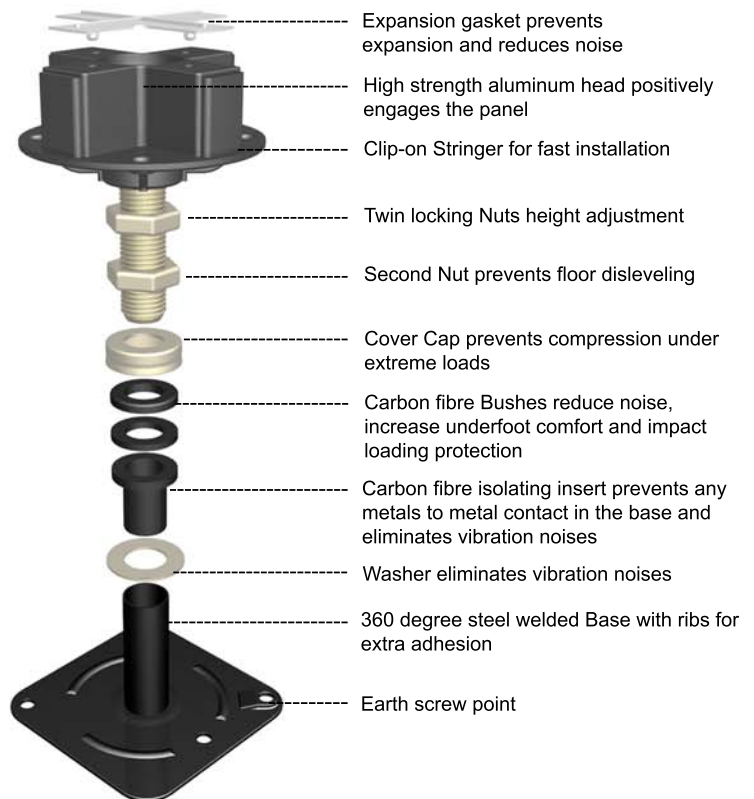
Flame Spread: 0

Heat Evolved: 0

Smoke: 0

• Effect of cutting is negligible on indices.

• Panels are to conform to Australian Standard AS 1530, ASTM E84, and NFPA 99 for Ignitability, Spread of Flame, Heat Evolved, and Smoke Developed. All panels provide zero fire hazard and are rated as non-combustible



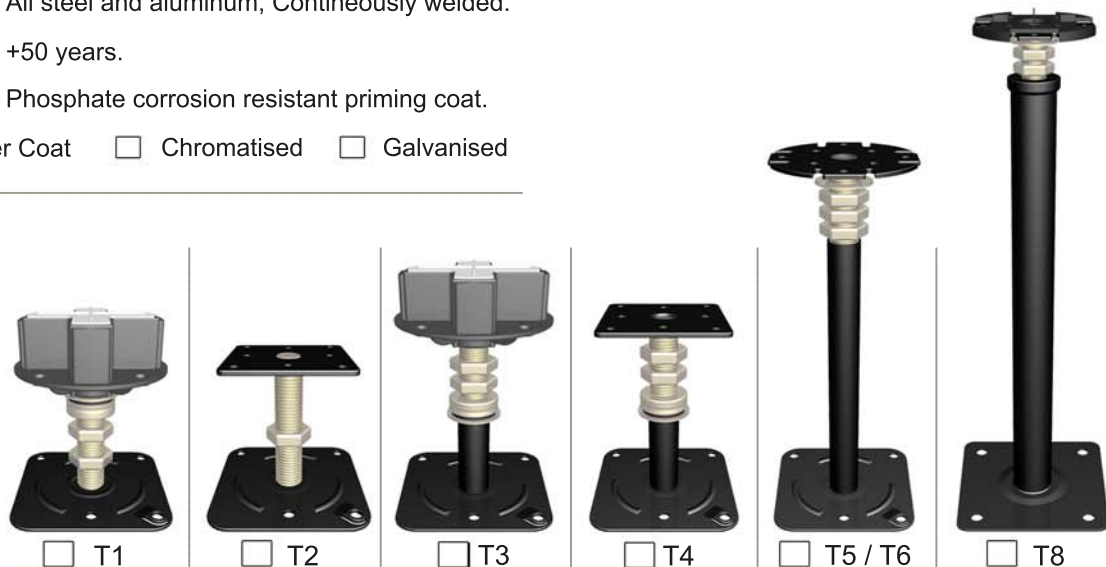
Access Floor Pedestal

Base Size: 100mm x 100mm²
 Diameter: 25mm³
 Wall thickness: 1.6mm⁴
 Construction: All steel and aluminum, Continuously welded.
 Life Span: +50 years.
 Coating: Phosphate corrosion resistant priming coat.
☐ Epoxy Powder Coat ☐ Chromatised ☐ Galvanised

Occupational Health & Safety

Toxicity: None
 Rating: Safe
 Cutting: Non Hazardous

Pedestal Chart



Use	Field	Perimeter	Field	Perimeter	Universal	Universal
Floor Height (mm)	65-200	65-200	150-1200	150-1200	150-1200	800-2000
Axial Load (kN)	30	30	30	30	35	45
Stringer Use	Optional	Optional	Optional	Optional	Required	Required
Stringer Type	<input type="checkbox"/>  AT6 - Air Tight Clip on Stringer			<input type="checkbox"/>  SG6 - Bolted Stringer		
Panel expansion	Yes	Yes	Yes	Yes	No	No
Acoustic Reduction	Yes	No	Yes	Yes	No	No
Used with Bare Panel Finish	Yes	Yes	Yes	Yes	Yes	Yes
Used with HPL and Vinyl Finish	No	No	No	No	Yes	Yes
Marble, Ceramic, Timber Finish	Optional	Optional	Optional	Optional	Yes	Yes

Technical Specifications

Installation

The raised access floor system and accessories are to be installed by a suitable installer as certified and approved by ASP Access Floors who shall be the manufacturer's authorised representative to maintain the integrity and acceptable performance of the floor systems installed.

Preparation: Prior to installation sub floor must be even, without irregularities, clean, dry, free from construction debris and clear from other trades.

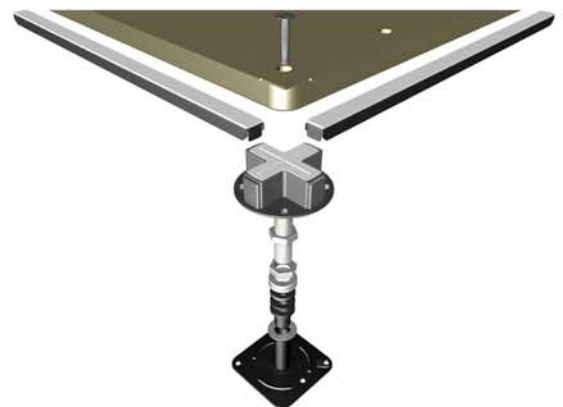
Installed Level: The Installed access floor system shall be level within $\pm 1.50\text{mm}$ inside a 3 meter radius and $\pm 2.50\text{mm}$ over the entire floor. The installed floor system and shall be rigid and free of rocking panels.

Subfloor: The finished surface of the concrete subfloor shall be level with a minimum wood float finish. the level tolerance shall not exceed $\pm 10\text{mm}$ from the specified finished concrete subfloor levels.

Fit and Finish: The fit and finish of cut panels around perimeters, columns and other such structures or intrusions shall have a maximum gap of 3mm. The raised access floor system shall not rely for its lateral stability on such structures. Cut edges of the panels shall be sealed with a PVA sealer.

- Following completion ASP Access Floors shall provide a 'Care and Maintenance Manual' which shall provide clear instruction for maintenance personnel and facilities managers on the safe use, cleaning and correct application of the installed ASP access floor system.

- ASP Access Floors shall not be liable for damage caused to the raised access floor outside as a result of neglect or misuse by other parties.



Environmental Conditions

- The area to receive the installation of the access floor shall be enclosed and maintained within a temperature range of 4 C to 32 C with a relative humidity range of 20% to 70%.

1. other sizes available including 300mm x 600mm, 24" x 24", 600 x 800mm, custom sizes available on request.
2. Standard base size, T8 uses 150mm x 150mm.
3. Larger diameters available, T8 uses 50mm.
4. Standard tube thickness, larger available, T8 uses 2.5mm.



green building council australia
MEMBER

