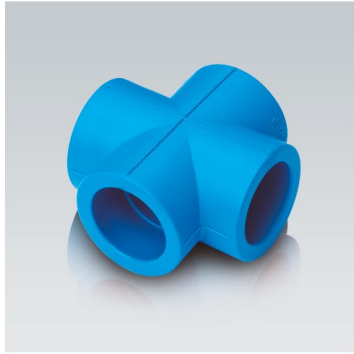
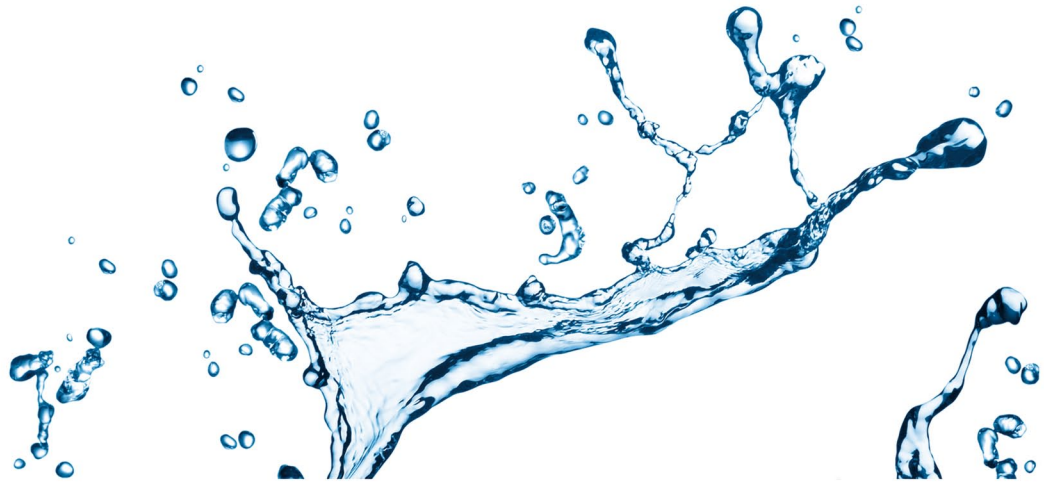




**Blue Ocean**

UNLIMITED  
INNOVATIONS



# BLUE OCEAN PPR POLYMER PIPING SYSTEMS

Polypropylene random copolymer (PPR) pipes, fittings and accessories for hot, cold and potable water installations, water heating system installations within buildings intended for human consumption

| 2014

**PRODUCT CATALOGUE**

Edition No. 8/2014-07





UNLIMITED  
INNOVATIONS

**Blue Ocean**

Blue Ocean Industrial Development (UK) Group Limited is a group of companies founded in London, UK.

Blue Ocean is one of the biggest manufacturers of indoor polymer piping systems, welding equipment for polymer piping systems, extrusion equipment, molds and polymer processing equipment.

Strict quality control, years of experience, constant research of new technologies and high quality customer service — these are the main factors that make Blue Ocean one of the leading companies in polymer piping business in the world.

All our products are made according to international standards and are tested in special certified laboratories, our main products are certified by SKZ German Certification Body and our welding equipment, valves and accessories are certified by CE Certification in Italy.

We value our clients and we do our best to support them and all their needs with creative and intelligent solutions.

Products of our Group of companies can be found in more than 40 countries all over the world.



All production companies for Blue Ocean Industrial Development (UK) Group Limited are certified with the following ISO standards:

ISO 9001:2008 Certification of Quality Management System

ISO 14001:2004 Certification of Environmental Management System

ISO 28001:2001 Certification of Occupational Health and Safety Management System

All Blue Ocean Industrial Development (UK) Group Limited piping system products are certified with:

SKZ Certification (Germany). Certificate No. A528 for Multilayer pipes made of PE-RT/AL/PPR

SKZ Certification (Germany). Certificate No. A529 for Pipes and fittings made of polypropylene PP-R

SKZ Certification (Germany). Certificate No. 653 for glass fiber multilayer pipes made of PP-R/PP-R-GF/PP-R

ECM Certification (Italy). CE Certificate for PPR Socket Welders

CEPREI Certification. CE Certificate for Ball Valves (Standard EN 13828:2003)

The following certificates are now pending: KIWA, DVGW, WRAS

# BLUE OCEAN pipes from PPR, PERT and multi-layer composite pipes

PPR pipes for cold water and drinking water transportation (Water working temperature up to 60°C, S5, SDR 11, Nominal pressure up to 1.0 MPa)

Product Code	Outside diameter, mm	Wall thickness mm	Pipes Serial	Water working pressure, MPa	Quantity per carton/package (each piece 4 m)
PPR-CW(X)/S5/16x1.8	16	1,8	S5	1,0	200
PPR-CW(X)/S5/20x1.9	20	1,9	S5	1,0	160
PPR-CW(X)/S5/25x2.3	25	2,3	S5	1,0	100
PPR-CW(X)/S5/32x2.9	32	2,9	S5	1,0	60
PPR-CW(X)/S5/40x3.7	40	3,7	S5	1,0	48
PPR-CW(X)/S5/50x4.6	50	4,6	S5	1,0	32
PPR-CW(X)/S5/63x5.8	63	5,8	S5	1,0	20
PPR-CW(X)/S5/75x6.8	75	6,8	S5	1,0	12
PPR-CW(X)/S5/90x8.2	90	8,2	S5	1,0	8
PPR-CW(X)/S5/110x10.0	110	10	S5	1,0	8
PPR-CW(X)/S5/125x11.4	125	11,4	S5	1,0	4
PPR-CW(X)/S5/140x12.7	140	12,7	S5	1,0	4
PPR-CW(X)/S5/160x14.6	160	14,6	S5	1,0	4
The following items* are supplied in coils					
PPR-CW(X)/S5/16x1.8 - c	16	1,8	S5	1,0	100
PPR-CW(X)/S5/20x1.9 - c	20	1,9	S5	1,0	100
PPR-CW(X)/S5/25x2.3 - c	25	2,3	S5	1,0	50

PPR pipes for cold water and drinking water transportation (Water working temperature up to 60°C, S4 series, SDR 9, Nominal pressure up to PN. 1.25 MPa)

Product Code	Outside diameter, mm	Wall thickness mm	Pipes Serial	Water working pressure, MPa	Quantity per carton/package (each piece 4 m)
PPR-CW(X)/S4/16x2.0	16	2	S4	1,25	200
PPR-CW(X)/S4/20x2.3	20	2,3	S4	1,25	160
PPR-CW(X)/S4/25x2.8	25	2,8	S4	1,25	100
PPR-CW(X)/S4/32x3.6	32	3,6	S4	1,25	60
PPR-CW(X)/S4/40x4.5	40	4,5	S4	1,25	48
PPR-CW(X)/S4/50x5.6	50	5,6	S4	1,25	32
PPR-CW(X)/S4/63x7.1	63	7,1	S4	1,25	20
PPR-CW(X)/S4/75x8.4	75	8,4	S4	1,25	12
PPR-CW(X)/S4/90x10.1	90	10,1	S4	1,25	8
PPR-CW(X)/S4/110x12.3	110	12,3	S4	1,25	8
PPR-CW(X)/S4/125x14.0	125	14	S4	1,25	4
PPR-CW(X)/S4/140x15.7	140	15,7	S4	1,25	4
PPR-CW(X)/S4/160x17.9	160	17,9	S4	1,25	4
The following items* are supplied in coils					
PPR-CW(X)/S4/16x2.0 - c	16	2.0	S4	1,25	100
PPR-CW(X)/S4/20x2.3 - c	20	2.3	S4	1,25	100
PPR-CW(X)/S4/25x2.8 - c	25	2.8	S4	1,25	50

The product produced according to the international Standard ISO: EN ISO15874:2013  
German Standard: DIN 8077:2008; 8078:2008.

# BLUE OCEAN pipes from PPR, PERT and multi-layer composite pipes

PPR pipes for hot, cold and drinking water transportation (Water working temperature up to 70°C, water short time high temperature up to 90°C, S3.2 series, SDR 7.4, Nominal pressure up to PN. 1.6 MPa)



Product Code	Outside diameter, mm	Wall thickness mm	Pipes Serial	Water working pressure, MPa	Quantity per carton/package (each piece 4 m)
PPR-HW(X)/S3.2/16x2.2	16	2,2	S3.2	1.6	200
PPR-HW(X)/S3.2/20x2.8	20	2,8	S3.2	1.6	160
PPR-HW(X)/S3.2/25x3.5	25	3,5	S3.2	1.6	100
PPR-HW(X)/S3.2/32x4.4	32	4,4	S3.2	1.6	60
PPR-HW(X)/S3.2/40x5.5	40	5,5	S3.2	1.6	48
PPR-HW(X)/S3.2/50x6.9	50	6,9	S3.2	1.6	32
PPR-HW(X)/S3.2/63x8.6	63	8,6	S3.2	1.6	20
PPR-HW(X)/S3.2/75x10.	75	10	S3.2	1.6	12
PPR-HW(X)/S3.2/90x12.3	90	12,3	S3.2	1.6	8
PPR-HW(X)/S3.2/110x15.1	110	15,1	S3.2	1.6	8
PPR-HW(X)/S3.2/125x17.1	125	17,1	S3.2	1.6	4
PPR-HW(X)/S3.2/140x19.2	140	19,2	S3.2	1.6	4
PPR-HW(X)/S3.2/160x21.9	160	21,9	S3.2	1.6	4
The following items* are supplied in coils					
PPR-HW(X)/S3.2/16x2.2 - c	16	2,2	S3.2	1.6	100
PPR-HW(X)/S3.2/20x2.8 - c	20	2,8	S3.2	1.6	100
PPR-HW(X)/S3.2/25x3.5 - c	25	3,5	S3.2	1.6	50

PPR pipes for hot, cold and drinking water transportation (Water working temperature up to 70°C, water short time high temperature up to 90°C, S2.5 series, SDR 6, Nominal pressure up to PN. 2.0 MPa)



Product Code	Outside diameter, mm	Wall thickness mm	Pipes Serial	Water working pressure, MPa	Quantity per carton/package (each piece 4 m)
PPR-HW(X)/S2.5/16x2.7	16	2,7	S2.5	2.0	200
PPR-HW(X)/S2.5/20x3.4	20	3,4	S2.5	2.0	160
PPR-HW(X)/S2.5/25x4.2	25	4,2	S2.5	2.0	100
PPR-HW(X)/S2.5/32x5.4	32	5,4	S2.5	2.0	60
PPR-HW(X)/S2.5/40x6.7	40	6,7	S2.5	2.0	48
PPR-HW(X)/S2.5/50x8.3	50	8,3	S2.5	2.0	32
PPR-HW(X)/S2.5/63x10.5	63	10,5	S2.5	2.0	20
PPR-HW(X)/S2.5/75x12.5	75	12,5	S2.5	2.0	12
PPR-HW(X)/S2.5/90x15.0	90	15	S2.5	2.0	8
PPR-HW(X)/S2.5/110x18.3	110	18,3	S2.5	2.0	8
PPR-HW(X)/S2.5/125x20.8	125	20,8	S2.5	2.0	4
PPR-HW(X)/S2.5/140x23.3	140	23,3	S2.5	2.0	4
PPR-HW(X)/S2.5/160x26.6	160	26,6	S2.5	2.0	4
The following items* are supplied in coils					
PPR-HW(X)/S2.5/16x2.7 - c	16	2,7	S2.5	2.0	100
PPR-HW(X)/S2.5/20x3.4 - c	20	3,4	S2.5	2.0	100
PPR-HW(X)/S2.5/25x4.2 - c	25	4,2	S2.5	2.0	50



UNLIMITED INNOVATIONS

The product produced according to the international Standard ISO: EN ISO15874:2013  
German Standard: DIN 8077:2008; 8078:2008.



# BLUE OCEAN pipes from PPR, PERT and multi-layer composite pipes

Blue Ocean Fiber-G (PPR/Fiberglass/PPR) composite pipes for hot and cold water transportation (Water working temperature up to 70°C, water short time high temperature up to 90°C, S4 series, SDR 9, Nominal pressure up to PN. 1.6 MPa)



Product Code	Outside diameter, mm	Wall thickness mm	Pipes Serial	Water working pressure, MPa	Quantity per carton/package (each piece 4 m)
PPR-Fiber-G-HW(X)/S4.0/75x8.4	75	8,4	S4.0	1.6	12
PPR-Fiber-G-HW(X)/S4.0/90x10.1	90	10,1	S4.0	1.6	8
PPR-Fiber-G-HW(X)/S4.0/110x12.3	110	12,3	S4.0	1.6	8
PPR-Fiber-G-HW(X)/S4.0/125x14.0	125	14	S4.0	1.6	4
PPR-Fiber-G-HW(X)/S4.0/140x15.7	140	15,7	S4.0	1.6	4
PPR-Fiber-G-HW(X)/S4.0/160x17.9	160	17,9	S4.0	1.6	4

Blue Ocean Fiber-G (PPR/Fiberglass/PPR) composite pipes for hot and cold water transportation (Water working temperature up to 70°C, water short time high temperature up to 90°C, S3.2 series, SDR 7.4, Nominal pressure up to PN. 2.0 MPa)



Product Code	Outside diameter, mm	Wall thickness mm	Pipes Serial	Water working pressure, MPa	Quantity per carton/package (each piece 4 m)
PPR-Fiber-G-HW(X)/S3.2/20x2.8	20	2,8	S3.2	2.0	160
PPR-Fiber-G-HW(X)/S3.2/25x3.5	25	3,5	S3.2	2.0	100
PPR-Fiber-G-HW(X)/S3.2/32x4.4	32	4,4	S3.2	2.0	60
PPR-Fiber-G-HW(X)/S3.2/40x5.5	40	5,5	S3.2	2.0	48
PPR-Fiber-G-HW(X)/S3.2/50x6.9	50	6,9	S3.2	2.0	32
PPR-Fiber-G-HW(X)/S3.2/63x8.6	63	8,6	S3.2	2.0	20
PPR-Fiber-G-HW(X)/S3.2/75x10.3	75	10,3	S3.2	2.0	12
PPR-Fiber-G-HW(X)/S3.2/90x12.3	90	12,3	S3.2	2.0	8
PPR-Fiber-G-HW(X)/S3.2/110x15.1	110	15,1	S3.2	2.0	8
PPR-Fiber-G-HW(X)/S3.2/125x17.1	125	17,1	S3.2	2.0	4
PPR-Fiber-G-HW(X)/S3.2/140x19.2	140	19,2	S3.2	2.0	4
PPR-Fiber-G-HW(X)/S3.2/160x21.9	160	21,9	S3.2	2.0	4

Blue Ocean Fiber-G (PPR/Fiberglass/PPR) composite pipes for hot and cold water transportation (Water working temperature up to 70°C, water short time high temperature up to 90°C, S2.5 series, SDR 6, Nominal pressure up to PN. 2.5 MPa)



Product Code	Outside diameter, mm	Wall thickness mm	Pipes Serial	Water working pressure, MPa	Quantity per carton/package (each piece 4 m)
PPR-Fiber-G-HW(X)/S2.5/20x3.4	20	3,4	S2.5	2.5	160
PPR-Fiber-G-HW(X)/S2.5/25x4.2	25	4,2	S2.5	2.5	100
PPR-Fiber-G-HW(X)/S2.5/32x5.4	32	5,4	S2.5	2.5	60
PPR-Fiber-G-HW(X)/S2.5/40x6.7	40	6,7	S2.5	2.5	48
PPR-Fiber-G-HW(X)/S2.5/50x8.3	50	8,3	S2.5	2.5	32
PPR-Fiber-G-HW(X)/S2.5/63x10.5	63	10,5	S2.5	2.5	20

The product produced according to the international Standard ISO: EN ISO15874:2013  
German Standard: DIN 8077:2008; 8078:2008.

# BLUE OCEAN pipes from PPR, PERT and multi-layer composite pipes

Blue Ocean T-fusion outer layer thermo-fusion PPR/AL/PPR overlap welding composite pipe for cold and hot water transportation, central heating (Water working temperature up to 70°C, water short time high temperature up to 90°C, Nominal pressure up to PN. 2.5 MPa)

Product Code	Outside diameter, mm	Wall thickness mm	Pipes Serial	Water working pressure, MPa	Quantity per carton/package (each piece 4 m)
PPR-AL-PPR (X) OLW - 20x3.0/2.5	20	3.0	PPR/AL	2.5	160
PPR-AL-PPR (X) OLW - 25x3.25/2.5	25	3.25	PPR/AL	2.5	100
PPR-AL-PPR (X) OLW - 32x4.0/2.5	32	4.0	PPR/AL	2.5	60
PPR-AL-PPR (X) OLW - 40x5.0/2.5	40	5.0	PPR/AL	2.5	48
PPR-AL-PPR (X) OLW - 50x5.5/2.5	50	5.5	PPR/AL	2.5	32
PPR-AL-PPR (X) OLW - 63x7.0/2.5	63	7.0	PPR/AL	2.5	20
PPR-AL-PPR (X) OLW - 75x8.5/2.5	75	8.5	PPR/AL	2.5	12
The following items* are supplied in coils					
PPR-AL-PPR (X) OLW - 20x3.0/2.5 - c	20	3.0	PPR/AL	2.5	100
PPR-AL-PPR (X) OLW - 25x3.25/2.5 - c	25	3.25	PPR/AL	2.5	50

Blue Ocean T-fusion outer layer thermo-fusion PPR/AL/PERT overlap welding composite pipe for cold and hot water transportation, central heating (Water working temperature up to 70°C, water short time high temperature up to 90°C, Nominal pressure up to PN. 2.5 MPa)

Product Code	Outside diameter, mm	Wall thickness mm	Pipes Serial	Water working pressure, MPa	Quantity per carton/package (each piece 4 m)
PPR-AL-PERT (X) OLW - 20x3.0/2.5	20	3.0	PPR/AL/PERT	2.5	160
PPR-AL-PERT (X) OLW - 25x3.25/2.5	25	3.25	PPR/AL/PERT	2.5	100
PPR-AL-PERT (X) OLW - 32x4.0/2.5	32	4.0	PPR/AL/PERT	2.5	60
PPR-AL-PERT (X) OLW - 40x5.0/2.5	40	5.0	PPR/AL/PERT	2.5	48
PPR-AL-PERT (X) OLW - 50x5.5/2.5	50	5.5	PPR/AL/PERT	2.5	32
PPR-AL-PERT (X) OLW - 63x7.0/2.5	63	7.0	PPR/AL/PERT	2.5	20
PPR-AL-PERT (X) OLW - 75x8.5/2.5	75	8.5	PPR/AL/PERT	2.5	12
The following items* are supplied in coils					
PPR-AL-PERT (X) OLW - 20x3.0/2.5 - c	20	3.0	PPR/AL/PERT	2.5	100
PPR-AL-PERT (X) OLW - 25x3.25/2.5 - c	25	3.25	PPR/AL/PERT	2.5	50

Blue Ocean S-fusion outer layer thermo-fusion PPR/AL/PPR but welding composite pipe for cold and hot water transportation, central heating (Water working temperature up to 70°C, water short time high temperature up to 90°C, Nominal pressure up to PN. 2.5 MPa)

Product Code	Outside diameter, mm	Wall thickness mm	Pipes Serial	Water working pressure, MPa	Quantity per carton/package (each piece 4 m)
PPR-AL-PPR (X)/BW-20x3.0/2.5	20	3.0	PPR/AL	2.5	160
PPR-AL-PPR (X)/BW-25x3.5/2.5	25	3.5	PPR/AL	2.5	100
PPR-AL-PPR (X)/BW-32x4.0/2.5	32	4.0	PPR/AL	2.5	60
PPR-AL-PPR (X)/BW-40x5.0/2.5	40	5.0	PPR/AL	2.5	48
PPR-AL-PPR (X)/BW-50x5.5/2.5	50	5.5	PPR/AL	2.5	32
PPR-AL-PPR (X)/BW-63x7.0/2.5	63	7.0	PPR/AL	2.5	20
PPR-AL-PPR (X)/BW-75x8.5/2.5	75	8.5	PPR/AL	2.5	12
PPR-AL-PPR (X)/BW-90x10.0/2.5	90	10.0	PPR/AL	2.5	8
PPR-AL-PPR (X)/BW-110x12.0/2.5	110	12.0	PPR/AL	2.5	8



UNLIMITED INNOVATIONS

The product produced according to the international Standard ISO: EN ISO15874:2013  
German Standard: DIN 8077:2008; 8078:2008.



# BLUE OCEAN pipes from PPR, PERT and multi-layer composite pipes



Blue Ocean S-fusion outer layer thermo-fusion PPR/AL/PERT but welding composite pipe for cold and hot water transportation, central heating (Water working temperature up to 70°C, water short time high temperature up to 90°C, Nominal pressure up to PN. 2.5 MPa)

Product Code	Outside diameter, mm	Wall thickness mm	Pipes Serial	Water working pressure, MPa	Quantity per carton/package (each piece 4 m)
PPR-AL-PERT (X)/BW-20x3.0/2.5	20	3.0	PPR/AL/PERT	2.5	160
PPR-AL-PERT (X)/BW-25x3.5/2.5	25	3.5	PPR/AL/PERT	2.5	100
PPR-AL-PERT (X)/BW-32x4.0/2.5	32	4.0	PPR/AL/PERT	2.5	60
PPR-AL-PERT (X)/BW-40x5.0/2.5	40	5.0	PPR/AL/PERT	2.5	48
PPR-AL-PERT (X)/BW-50x5.5/2.5	50	5.5	PPR/AL/PERT	2.5	32
PPR-AL-PERT (X)/BW-63x7.0/2.5	63	7.0	PPR/AL/PERT	2.5	20
PPR-AL-PERT (X)/BW-75x8.5/2.5	75	8.5	PPR/AL/PERT	2.5	12
PPR-AL-PERT (X)/BW-90x10.0/2.5	90	10.0	PPR/AL/PERT	2.5	8
PPR-AL-PERT (X)/BW-110x12.0/2.5	110	12.0	PPR/AL/PERT	2.5	8



Blue Ocean STABI PPR/AL/PPR composite pipes for hot and cold water transportation and central heating (Water working temperature up to 70°C, water short time high temperature up to 90°C, S3.2 series (inner pipe), SDR 7.4, Nominal pressure up to PN. 2.0 MPa) - aluminum foil without perforation

Product Code	Outside diameter, mm	Wall thickness mm	Pipes Serial	Water working pressure, MPa	Quantity per carton/package (each piece 4 m)
PAP (X) B0-Stabi 20x2.8/ 3.7	20	2.8	S3.2	2.0	160
PAP (X) B0-Stabi 25x3.5/ 4.5	25	3.5	S3.2	2.0	100
PAP (X) B0-Stabi 32x4.5/ 5.5	32	4.5	S3.2	2.0	60
PAP (X) B0-Stabi 40x5.6/ 6.7	40	5.6	S3.2	2.0	48
PAP (X) B0-Stabi 50x6.9/ 8.0	50	6.9	S3.2	2.0	32
PAP (X) B0-Stabi 63x8.7/ 9.9	63	8.7	S3.2	2.0	20



Blue Ocean STABI PPR/AL/PPR composite pipes for hot and cold water transportation and central heating (Water working temperature up to 70°C, water short time high temperature up to 90°C, S3.2 series (inner pipe), SDR 7.4, Nominal pressure up to PN. 2.0 MPa) - aluminum foil with perforation

Product Code	Outside diameter, mm	Wall thickness mm	Pipes Serial	Water working pressure, MPa	Quantity per carton/package (each piece 4 m)
PAP (X) B0-Stabi - 2 - 20x2.8/ 3.7	20	2.8	S3.2	2.0	160
PAP (X) B0-Stabi - 2 - 25x3.5/ 4.5	25	3.5	S3.2	2.0	100
PAP (X) B0-Stabi - 2 - 32x4.5/ 5.5	32	4.5	S3.2	2.0	60
PAP (X) B0-Stabi - 2 - 40x5.6/ 6.7	40	5.6	S3.2	2.0	48
PAP (X) B0-Stabi - 2 - 50x6.9/ 8.0	50	6.9	S3.2	2.0	32
PAP (X) B0-Stabi - 2 - 63x8.7/ 9.9	63	8.7	S3.2	2.0	20

The product produced according to the international Standard ISO: EN ISO15874:2013  
German Standard: DIN 8077:2008; 8078:2008.

# BLUE OCEAN pipes from PPR, PERT and multi-layer composite pipes



PERT single layer pipe in coils for under floor heating and central air condition systems (Water temperature up to 60°C , Nominal pressure up to PN. 1.0 Mpa)

Product Code	Outside diameter, mm	Wall thickness mm	Pipes Serial	Water working pressure, MPa	Quantity per package, pieces/ m
PERT/FHS /16x2.0 - c (in coils)	16	2.0	PERT/FHS	1.0	200
PERT/FHS /20x2.0 - c (in coils)	20	2.0	PERT/FHS	1.0	100
PERT/FHS /25x2.3 - c (in coils)	25	2.3	PERT/FHS	1.0	50



Blue Ocean A-Oxy PERT/EVOH/PERT oxygen barrier five layer composite pipe in coils for wall and under floor heating (Water working temperature up to 70°C, water short time high temperature up to 95°C, Nominal pressure up to PN.1.0 MPa)

Product Code	Outside diameter, mm	Wall thickness mm	Pipes Serial	Water working pressure, MPa	Quantity per package, pieces/ m
PERT /EVOH/PERT-OB/16x2.0 - c (in coils)	16	2.0	PERT/EVOH	1.0	200
PERT /EVOH/PERT-OB/20x2.0 - c (in coils)	20	2.0	PERT/EVOH	1.0	100
PERT /EVOH/PERT-OB/25x2.5 - c (in coils)	25	2.5	PERT/EVOH	1.0	50



Blue Ocean PERT/AL/PERT overlap welding multilayer composite pipe in coils for cold, hot, drinking water transportation and heating system (Water working temperature up to 95°C, Nominal pressure up to PN. 1.0 Mpa)

Product Code	Outside diameter, mm	Wall thickness mm	Pipes Serial	Water working pressure, MPa	Quantity per package, pieces/ m
PERT/AL/PERT (X) OLW -16x2.0 - c (in coils)	16	2.0	PERT/AL	1.0	200
PERT/AL/PERT (X) OLW -20x2.0 - c (in coils)	20	2.0	PERT/AL	1.0	100
PERT/AL/PERT (X) OLW -25x2.5 - c (in coils)	25	2.5	PERT/AL	1.0	50
PERT/AL/PERT (X) OLW -32x3.0 - c (in coils)	32	3.0	PERT/AL	1.0	50



Blue Ocean PERT/AL/PERT overlap welding multilayer composite pipe in coils for gas transportation (Nominal pressure up to PN. 1.6 Mpa)

Product Code	Outside diameter, mm	Wall thickness mm	Pipes Serial	Water working pressure, MPa	Quantity per package, pieces/ m
PERT/AL/PERT (X) OLW- G -16x2.0 - c (in coils)	16	2.0	PERT/AL-GAS	1.6	200
PERT/AL/PERT (X) OLW- G -20x2.0 - c (in coils)	20	2.0	PERT/AL-GAS	1.6	100
PERT/AL/PERT (X) OLW- G -25x2.5 - c (in coils)	25	2.5	PERT/AL-GAS	1.6	50
PERT/AL/PERT (X) OLW- G -32x3.0 - c (in coils)	32	3.0	PERT/AL-GAS	1.6	50



UNLIMITED INNOVATIONS

The product produced according to the international Standard ISO: EN ISO15874:2013  
German Standard: DIN 8077:2008; 8078:2008.





## BLUE OCEAN pipes from PPR, PERT and multi-layer composite pipes



Blue Ocean PERT/AL/PERT but welding multilayer composite pipe in coils for cold, hot, drinking water transportation and heating system (Water working temperature up to 95°C, Nominal pressure up to PN. 1.0 Mpa)

Product Code	Outside diameter, mm	Wall thickness mm	Pipes Serial	Water working pressure, MPa	Quantity per package, pieces/ m
PERT/AL/PERT (X) BW -16x2.0 - c (in coils)	16	2.0	PERT/AL	1.0	200
PERT/AL/PERT (X) BW -20x2.0 - c (in coils)	20	2.0	PERT/AL	1.0	100
PERT/AL/PERT (X) BW -25x2.5 - c (in coils)	25	2.5	PERT/AL	1.0	50
PERT/AL/PERT (X) BW -26x3.0 - c (in coils)	26	3.0	PERT/AL	1.0	50
PERT/AL/PERT (X) BW -32x3.0 - c (in coils)	32	3.0	PERT/AL	1.0	50



Blue Ocean PERT/AL/PERT but welding multilayer composite pipe in coils for gas transportation (Nominal pressure up to PN. 1.6 MPa)

Product Code	Outside diameter, mm	Wall thickness mm	Pipes Serial	Water working pressure, MPa	Quantity per package, pieces/ m
PERT/AL/PERT (X) BW -G -16x2.0 - c (in coils)	16	2.0	PERT/AL-GAS	1.6	200
PERT/AL/PERT (X) BW - G -20x2.0 - c (in coils)	20	2.0	PERT/AL-GAS	1.6	100
PERT/AL/PERT (X) BW - G -25x2.5 - c (in coils)	25	2.5	PERT/AL-GAS	1.6	50
PERT/AL/PERT (X) BW - G -26x3.0 - c (in coils)	26	3.0	PERT/AL-GAS	1.6	50
PERT/AL/PERT (X) BW - G -32x3.0 - c (in coils)	32	3.0	PERT/AL-GAS	1.6	50

## BLUE OCEAN PPR SOCKET FUSION FITTINGS

### BLUE OCEAN PPR socket fusion fittings without brass alloy inserts



#### Equal tee

Product code	Inside diameter D, mm	Quantity per carton, pcs	Product code	Inside diameter D, mm	Quantity per carton, pcs
PPRF/ET(X)-16	16	400	PPRF/ET(X)-75	75	12
PPRF/ET(X)-20	20	300	PPRF/ET(X)-90	90	6
PPRF/ET(X)-25	25	150	PPRF/ET(X)-110	110	2
PPRF/ET(X)-32	32	120	PPRF/ET(X)-125	125	2
PPRF/ET(X)-40	40	60	PPRF/ET(X)-140	140	2
PPRF/ET(X)-50	50	30	PPRF/ET(X)-160	160	1
PPRF/ET(X)-63	63	15			

The product produced according to the international Standard ISO: EN ISO15874:2013  
German Standard: DIN 8077:2008; 8078:2008.

# BLUE OCEAN PPR SOCKET FUSION FITTINGS



## Reducing tee

Product code	Inside diameter		Quantity per carton, pcs	Product code	Inside diameter		Quantity per carton, pcs
	D, mm	d, mm			D, mm	d, mm	
PPRF/RT(X)-16x20x16	16	20	300	PPRF/RT(X)-75x32x75	75	32	15
PPRF/RT(X)-16x25x16	16	25	200	PPRF/RT(X)-75x40x75	75	40	15
PPRF/RT(X)-20x16x20	20	16	300	PPRF/RT(X)-75x50x75	75	50	15
PPRF/RT(X)-25x16x25	25	16	200	PPRF/RT(X)-75x63x75	75	63	12
PPRF/RT(X)-25x20x25	25	20	150	PPRF/RT(X)-90x32x90	90	32	12
PPRF/RT(X)-32x16x32	32	16	120	PPRF/RT(X)-90x40x90	90	40	10
PPRF/RT(X)-32x20x32	32	20	120	PPRF/RT(X)-90x50x90	90	50	10
PPRF/RT(X)-32x25x32	32	25	120	PPRF/RT(X)-90x63x90	90	63	6
PPRF/RT(X)-40x20x40	40	20	90	PPRF/RT(X)-90x75x90	90	75	6
PPRF/RT(X)-40x25x40	40	25	90	PPRF/RT(X)-110x40x110	110	40	4
PPRF/RT(X)-40x32x40	40	32	75	PPRF/RT(X)-110x50x110	110	50	4
PPRF/RT(X)-50x20x50	50	20	60	PPRF/RT(X)-110x63x110	110	63	4
PPRF/RT(X)-50x25x50	50	25	60	PPRF/RT(X)-110x75x110	110	75	4
PPRF/RT(X)-50x32x50	50	32	45	PPRF/RT(X)-110x90x110	110	90	4
PPRF/RT(X)-50x40x50	50	40	45	PPRF/RT(X)-125x110x125	125	110	2
PPRF/RT(X)-63x20x63	63	20	24	PPRF/RT(X)-140x110x140	140	110	2
PPRF/RT(X)-63x25x63	63	25	24	PPRF/RT(X)-160x90x160	160	90	2
PPRF/RT(X)-63x32x63	63	32	24	PPRF/RT(X)-160x110x160	160	110	1
PPRF/RT(X)-63x40x63	63	40	24	PPRF/RT(X)-160x125x160	160	125	1
PPRF/RT(X)-63x50x63	63	50	24	PPRF/RT(X)-160x140x160	160	140	1
PPRF/RT(X)-75x25x75	75	25	24				



## Side reducing tee

Product code	Inside diameter D, mm	Quantity per carton, pcs	Product code	Inside diameter D, mm	Quantity per carton, pcs
PPRF/SRT(X)-32x20x20	32	120			



## Elbow tee

Product code	Inside diameter D, mm	Quantity per carton, pcs	Product code	Inside diameter D, mm	Quantity per carton, pcs
PPRF/90EET(X)-25	25	150	PPRF/90EET(X)-40	40	60



UNLIMITED INNOVATIONS

The product produced according to the international Standard ISO: EN ISO15874:2013  
German Standard: DIN 8077:2008; 8078:2008.



# BLUE OCEAN PPR SOCKET FUSION FITTINGS



## Reducing elbow tee

Product code	Inside diameter		Quantity per carton, pcs	Product code	Inside diameter		Quantity per carton, pcs
	D, mm	d, mm			D, mm	d, mm	
PPRF/90RET(X)-20x25x20	20	25	200				



## Cross

Product code	Inside diameter		Quantity per carton, pcs	Product code	Inside diameter		Quantity per carton, pcs
	D, mm	d, mm			D, mm	d, mm	
PPRF/CP(X)-20	20		200	PPRF/CP(X)-32	32		80
PPRF/CP(X)-25	25		150	PPRF/CP(X)-40	40		40



## Reducing cross

Product code	Inside diameter		Quantity per carton, pcs	Product code	Inside diameter		Quantity per carton, pcs
	D, mm	d, mm			D, mm	d, mm	
PPRF/RCP(X)-25 x 20	25	20	150	PPRF/RCP(X)-32 x 25	32	25	80



## 90° Elbow

Product code	Inside diameter		Quantity per carton, pcs	Product code	Inside diameter		Quantity per carton, pcs
	D, mm	d, mm			D, mm	d, mm	
PPRF/90E(X)-16	16		600	PPRF/90E(X)-75	75		12
PPRF/90E(X)-20	20		400	PPRF/90E(X)-90	90		6
PPRF/90E(X)-25	25		250	PPRF/90E(X)-110	110		4
PPRF/90E(X)-32	32		120	PPRF/90E(X)-125	125		2
PPRF/90E(X)-40	40		80	PPRF/90E(X)-140	140		2
PPRF/90E(X)-50	50		45	PPRF/90E(X)-160	160		1
PPRF/90E(X)-63	63		18				



## 90° elbow internal/external

Product code	Inside diameter		Quantity per carton, pcs	Product code	Inside diameter		Quantity per carton, pcs
	D, mm	d, mm			D, mm	d, mm	
PPRF/90EIE(X)-20	20	20	400	PPRF/90EIE(X)-32	32	32	150
PPRF/90EIE(X)-25	25	25	300				

The product produced according to the international Standard ISO: EN ISO15874:2013  
German Standard: DIN 8077:2008; 8078:2008.

# BLUE OCEAN PPR SOCKET FUSION FITTINGS



## 90° reducing elbow

Product code	Inside diameter		Quantity per carton, pcs	Product code	Inside diameter		Quantity per carton, pcs
	D, mm	d, mm			D, mm	d, mm	
PPRF/90RE(X)-25x20	25	20	300	PPRF/90RE(X)-32x25	32	25	150
PPRF/90RE(X)-32x20	32	20	200				



## 90° long elbow

Product code	Inside diameter		Quantity per carton, pcs	Product code	Inside diameter		Quantity per carton, pcs
	D, mm	d, mm			D, mm	d, mm	
PPRF/90LE(X)-16	16		400	PPRF/90LE(X)-32	32		60
PPRF/90LE(X)-20	20		200	PPRF/90LE(X)-40	40		30
PPRF/90LE(X)-25	25		90				



## 90° Elbow with PPR FT end

Product code	Inside diameter		Quantity per carton, pcs	Product code	Inside diameter		Quantity per carton, pcs
	D, mm	d, mm			D, mm	d, mm	
PPRF/90E/PPR-FT(X) - 20x½"	20	½"	350	PPRF/90E/PPR-FT(X) - 25x¾"	25	¾"	200



## 90° Elbow with PPR MT end

Product code	Inside diameter		Quantity per carton, pcs	Product code	Inside diameter		Quantity per carton, pcs
	D, mm	d, mm			D, mm	d, mm	
PPRF/90E/PPR-MT(X) - 20x½"	20	½"	400	PPRF/90E/PPR-MT(X) - 25x¾"	25	¾"	400



## 45° Elbow

Product code	Inside diameter		Quantity per carton, pcs	Product code	Inside diameter		Quantity per carton, pcs
	D, mm	d, mm			D, mm	d, mm	
PPRF/45E(X)-16	16		800	PPRF/45E(X)-75	75		15
PPRF/45E(X)-20	20		500	PPRF/45E(X)-90	90		10
PPRF/45E(X)-25	25		300	PPRF/45E(X)-110	110		4
PPRF/45E(X)-32	32		150	PPRF/45E(X)-125	125		4
PPRF/45E(X)-40	40		100	PPRF/45E(X)-140	140		3
PPRF/45E(X)-50	50		45	PPRF/45E(X)-160	160		2
PPRF/45E(X)-63	63		24				



UNLIMITED INNOVATIONS

The product produced according to the international Standard ISO: EN ISO15874:2013  
German Standard: DIN 8077:2008; 8078:2008.



# BLUE OCEAN PPR SOCKET FUSION FITTINGS



## 45° elbow internal/external

Product code	Inside diameter		Quantity per carton, pcs	Product code	Inside diameter		Quantity per carton, pcs
	D, mm	d, mm			D, mm	d, mm	
PPRF/45EIE(X)-20	20	20	600	PPRF/45EIE(X)-32	32	32	200
PPRF/45EIE(X)-25	25	25	400				



## Coupling

Product code	Inside diameter		Quantity per carton, pcs	Product code	Inside diameter		Quantity per carton, pcs
	D, mm	D, mm			D, mm	D, mm	
PPRF/C(X)-16	16		1000	PPRF/C(X)-75	75		32
PPRF/C(X)-20	20		600	PPRF/C(X)-90	90		15
PPRF/C(X)-25	25		400	PPRF/C(X)-110	110		8
PPRF/C(X)-32	32		270	PPRF/C(X)-125	125		6
PPRF/C(X)-40	40		150	PPRF/C(X)-140	140		6
PPRF/C(X)-50	50		80	PPRF/C(X)-160	160		4
PPRF/C(X)-63	63		36				



## Reducing coupling

Product code	Inside diameter		Quantity per carton, pcs	Product code	Inside diameter		Quantity per carton, pcs
	D, mm	d, mm			D, mm	d, mm	
PPRF/RC(X)-20x16	20	16	800	PPRF/RC(X)-75x32	75	32	40
PPRF/RC(X)-25x16	25	16	600	PPRF/RC(X)-75x40	75	40	40
PPRF/RC(X)-25x20	25	20	400	PPRF/RC(X)-75x50	75	50	40
PPRF/RC(X)-32x16	32	16	300	PPRF/RC(X)-75x63	75	63	24
PPRF/RC(X)-32x20	32	20	300	PPRF/RC(X)-90x40	90	40	18
PPRF/RC(X)-32x25	32	25	250	PPRF/RC(X)-90x50	90	50	18
PPRF/RC(X)-40x20	40	20	180	PPRF/RC(X)-90x63	90	63	18
PPRF/RC(X)-40x25	40	25	180	PPRF/RC(X)-90x75	90	75	12
PPRF/RC(X)-40x32	40	32	140	PPRF/RC(X)-110x50	110	50	8
PPRF/RC(X)-50x20	50	20	100	PPRF/RC(X)-110x63	110	63	8
PPRF/RC(X)-50x25	50	25	100	PPRF/RC(X)-110x75	110	75	8
PPRF/RC(X)-50x32	50	32	100	PPRF/RC(X)-110x90	110	90	8
PPRF/RC(X)-50x40	50	40	60	PPRF/RC(X)-125x110	125	110	4
PPRF/RC(X)-63x20	63	20	48	PPRF/RC(X)-140x110	140	110	4
PPRF/RC(X)-63x25	63	25	48	PPRF/RC(X)-160x90	160	90	4
PPRF/RC(X)-63x32	63	32	60	PPRF/RC(X)-160x110	160	110	4
PPRF/RC(X)-63x40	63	40	48	PPRF/RC(X)-160x125	160	125	4
PPRF/RC(X)-63x50	63	50	36	PPRF/RC(X)-160x140	160	140	3
PPRF/RC(X)-75x25	75	25	40				

The product produced according to the international Standard ISO: EN ISO15874:2013  
German Standard: DIN 8077:2008; 8078:2008.

# BLUE OCEAN PPR SOCKET FUSION FITTINGS



## PPR Adaptor with PPR FT end

Product code	Inside diameter		Quantity per carton, pcs	Product code	Inside diameter		Quantity per carton, pcs
	D, mm	d, mm			D, mm	d, mm	
PPRF/PPR-A/FT(X) - 20x½"	20	½"	600	PPRF/PPR-A/FT(X) - 25x¾"	25	¾"	400



## PPR Adaptor with PPR MT end

Product code	Inside diameter		Quantity per carton, pcs	Product code	Inside diameter		Quantity per carton, pcs
	D, mm	d, mm			D, mm	d, mm	
PPRF/PPR-A/MT(X) - 20x½"	20	½"	600	PPRF/PPR-A/MT(X) - 25x¾"	25	¾"	400



## PPR Manifold

Product code	Inside diameter		Quantity per carton, pcs	Product code	Inside diameter		Quantity per carton, pcs
	D, mm	d, mm			D, mm	d, mm	
PPRF/FCETA(X)-32x20x4	32	20 x 4	40	PPRF/FCETA(X)-40x25x4	40	25 x 4	30
PPRF/FCETA(X)-32x25x4	32	25 x 4	40	PPRF/FCETA(X)-50x25x4	50	25 x 4	15
PPRF/FCETA(X)-40x20x4	40	20 x 4	30	PPRF/FCETA(X)-50x25x6	50	25 x 6	12



## Single/Double PPR joint manifold block

Product code	Inside diameter		Quantity per carton, pcs	Product code	Inside diameter		Quantity per carton, pcs
	D, mm	d, mm			D, mm	d, mm	
PPRF/FCEUM(X)-32x20x1	32	20 x 1	80	PPRF/FCEUM(X)-40x20x1	40	20 x 1	75
PPRF/FCEUM(X)-32x20x2	32	20 x 2	70	PPRF/FCEUM(X)-40x20x2	40	20 x 2	40



## Distribution block (for heating use)

Product code	Inside diameter		Quantity per carton, pcs	Product code	Inside diameter		Quantity per carton, pcs
	D, mm	d, mm			D, mm	d, mm	
PPRF/DBFH(W)-20x16	20	16	80				



## Distribution block (for plumbing use)

Product code	Inside diameter		Quantity per carton, pcs	Product code	Inside diameter		Quantity per carton, pcs
	D, mm	d, mm			D, mm	d, mm	
PPRF/WDB(W)-25x20	25	20	20				



# BLUE OCEAN PPR SOCKET FUSION FITTINGS



## Cross-over pipe

Product code	Inside diameter D, mm	Quantity per carton, pcs	Product code	Inside diameter D, mm	Quantity per carton, pcs
PPRF/COP(X)-16	16	200	PPRF/COP(X)-32	32	40
PPRF/COP(X)-20	20	120	PPRF/COP(X)-40	40	30
PPRF/COP(X)-25	25	70			



## Compensation pipe

Product code	Inside diameter D, mm	Quantity per carton, pcs	Product code	Inside diameter D, mm	Quantity per carton, pcs
PPRF/COMP(X)-16	16	30	PPRF/COMP(X)-25	25	12
PPRF/COMP(X)-20	20	20			



## Bridging piece

Product code	Inside diameter D, mm	Quantity per carton, pcs	Product code	Inside diameter D, mm	Quantity per carton, pcs
PPRF/BP(X)-16	16	400	PPRF/BP(X)-40	40	30
PPRF/BP(X)-20	20	240	PPRF/BP(X)-50	50	20
PPRF/BP(X)-25	25	140	PPRF/BP(X)-63	63	8
PPRF/BP(X)-32	32	60			



## Screw cap, male

Product code	Inside diameter D, mm	Quantity per carton, pcs	Product code	Inside diameter D, mm	Quantity per carton, pcs
PPRF/SCAPM(X)- 1/2"	1/2"	1200	PPRF/SCAPM(X)- 3/4"	3/4"	600



## Screw cap, female

Product code	Inside diameter D, mm	Quantity per carton, pcs	Product code	Inside diameter D, mm	Quantity per carton, pcs
PPRF/SCAPF(X)- 1/2"	1/2"	600	PPRF/SCAPF(X)- 3/4"	3/4"	300

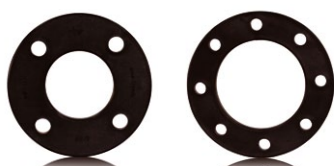
The product produced according to the international Standard ISO: EN ISO15874:2013  
German Standard: DIN 8077:2008; 8078:2008.

# BLUE OCEAN PPR SOCKET FUSION FITTINGS



## PPR flange adaptor

Product code	Inside diameter D, mm	Quantity per carton, pcs	Product code	Inside diameter D, mm	Quantity per carton, pcs
PPRF/FLA(X)-32	32	120	PPRF/FLA(X)-90	90	24
PPRF/FLA(X)-40	40	96	PPRF/FLA(X)-110	110	14
PPRF/FLA(X)-50	50	48	PPRF/FLA(X)-125	125	8
PPRF/FLA(X)-63	63	36	PPRF/FLA(X)-140	140	6
PPRF/FLA(X)-75	75	30	PPRF/FLA(X)-160	160	5



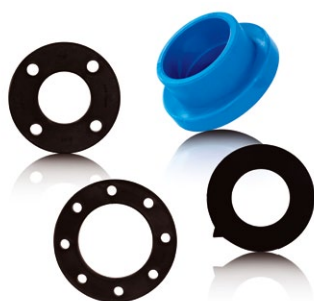
## Flange (Steel body coated by PP/GF) without hermetic seal

Product code	Inside diameter D, mm	Quantity per carton, pcs	Product code	Inside diameter D, mm	Quantity per carton, pcs
PPRF/FL-32 (4 holes)	32	60	PPRF/FL-90 (8 holes)	90	12
PPRF/FL-40 (4 holes)	40	35	PPRF/FL-110 (8 holes)	110	15
PPRF/FL-50 (4 holes)	50	25	PPRF/FL-125 (8 holes)	125	10
PPRF/FL-63 (4 holes)	63	20	PPRF/FL-140 (8 holes)	140	10
PPRF/FL-75 (4 holes)	75	15	PPRF/FL-160 (8 holes)	160	10



## EPDM hermetic seal for flange adaptor

Product code	Inside diameter D, mm	Quantity per carton, pcs	Product code	Inside diameter D, mm	Quantity per carton, pcs
PPRF/FLAS-32	180	60	PPRF/FLAS-90	80	12
PPRF/FLAS-40	120	35	PPRF/FLAS-110	80	15
PPRF/FLAS-50	100	25	PPRF/FLAS-125	60	10
PPRF/FLAS-63	100	20	PPRF/FLAS-140	60	10
PPRF/FLAS-75	90	15	PPRF/FLAS-160	60	10



## Flange complete set (Flange with steel body coated by PP/GF + PPR flange adaptor + hermetic seal)

Product code	Inside diameter D, mm	Quantity per carton, pcs	Product code	Inside diameter D, mm	Quantity per carton, pcs
PPRF/FL/C(X)-32 (4 holes)	32	40	PPRF/FL/C(X)-90 (8 holes)	90	9
PPRF/FL/C(X)-40 (4 holes)	40	28	PPRF/FL/C(X)-110 (8 holes)	110	8
PPRF/FL/C(X)-50 (4 holes)	50	24	PPRF/FL/C(X)-125 (8 holes)	125	4
PPRF/FL/C(X)-63 (4 holes)	63	14	PPRF/FL/C(X)-140 (8 holes)	140	4
PPRF/FL/C(X)-75 (4 holes)	75	12	PPRF/FL/C(X)-160 (8 holes)	160	3





# BLUE OCEAN PPR SOCKET FUSION FITTINGS



## Cap

Product code	Inside diameter D, mm	Quantity per carton, pcs	Product code	Inside diameter D, mm	Quantity per carton, pcs
PPRF/CAP(X)-16	16	1350	PPRF/CAP(X)-50	50	140
PPRF/CAP(X)-20	20	900	PPRF/CAP(X)-63	63	60
PPRF/CAP(X)-25	25	600	PPRF/CAP(X)-75	75	48
PPRF/CAP(X)-32	32	400	PPRF/CAP(X)-90	90	24
PPRF/CAP(X)-40	40	252	PPRF/CAP(X)-110	110	12



## Short plumbing adaptor

Product code	Inside diameter D, mm	Quantity per carton, pcs	Product code	Inside diameter D, mm	Quantity per carton, pcs
PPRF/SPA(X)-20	20	1400	PPRF/SPA(X)-32	32	400
PPRF/SPA(X)-25	25	750			



## Long plumbing adaptor

Product code	Inside diameter D, mm	Quantity per carton, pcs	Product code	Inside diameter D, mm	Quantity per carton, pcs
PPRF/LPA(X)-20	20	1000	PPRF/LPA(X)-32	32	300
PPRF/LPA(X)-25	25	600			



## Pipe clip with screw adaptor

Product code	Inside diameter D, mm	Quantity per carton, pcs	Product code	Inside diameter D, mm	Quantity per carton, pcs
PPRF/PSC(X)-20	20	400	PPRF/PSC(X)-40	40	150
PPRF/PSC(X)-25	25	300	PPRF/PSC(X)-50	50	80
PPRF/PSC(X)-32	32	180	PPRF/PSC(X)-63	63	60



## U – type pipe clip

Product code	Inside diameter D, mm	Quantity per carton, pcs	Product code	Inside diameter D, mm	Quantity per carton, pcs
PPRF/PCU(X)-16	16	1200	PPRF/PCU(X)-50	50	240
PPRF/PCU(X)-20	20	800	PPRF/PCU(X)-63	63	150
PPRF/PCU(X)-25	25	600	PPRF/PCU(X)-75	75	120
PPRF/PCU(X)-32	32	500	PPRF/PCU(X)-90	90	80
PPRF/PCU(X)-40	40	300	PPRF/PCU(X)-110	110	50

The product produced according to the international Standard ISO: EN ISO15874:2013  
German Standard: DIN 8077:2008; 8078:2008.

# BLUE OCEAN PPR SOCKET FUSION FITTINGS



## U – type pipe double clip

Product code	Inside diameter		Quantity per carton, pcs	Product code	Inside diameter		Quantity per carton, pcs
	D, mm	d, mm			D, mm	d, mm	
PPRF/DPCU(X)-16	16		500	PPRF/DPCU(X)-25	25		250
PPRF/DPCU(X)-20	20		300				



## Weld-in saddle

Product code	Inside diameter		Quantity per carton, pcs	Product code	Inside diameter		Quantity per carton, pcs
	D, mm	d, mm			D, mm	d, mm	
PPRF/WS(X)-40x20	40	20	500	PPRF/WS(X)-90x32	90	32	200
PPRF/WS(X)-40x25	40	25	400	PPRF/WS(X)-90x40	90	40	120
PPRF/WS(X)-50x20	50	20	500	PPRF/WS(X)-110x20	110	20	400
PPRF/WS(X)-50x25	50	25	400	PPRF/WS(X)-110x25	110	25	350
PPRF/WS(X)-63x20	63	20	500	PPRF/WS(X)-110x32	110	32	200
PPRF/WS(X)-63x25	63	25	400	PPRF/WS(X)-110x40	110	40	120
PPRF/WS(X)-63x32	63	32	270	PPRF/WS(X)-110x50	110	50	80
PPRF/WS(X)-75x20	75	20	500	PPRF/WS(X)-125x20	125	20	400
PPRF/WS(X)-75x25	75	25	400	PPRF/WS(X)-125x25	125	25	350
PPRF/WS(X)-75x32	75	32	250	PPRF/WS(X)-125x32	125	32	200
PPRF/WS(X)-75x40	75	40	120	PPRF/WS(X)-125x40	125	40	120
PPRF/WS(X)-90x20	90	20	400	PPRF/WS(X)-125x50	125	50	80
PPRF/WS(X)-90x25	90	25	400	PPRF/WS(X)-125x63	125	63	36



## PPR repairing stick

Product code	Inside diameter		Quantity per carton, pcs	Product code	Inside diameter		Quantity per carton, pcs
	D, mm	d, mm			D, mm	d, mm	
PPRF/RS(X)-7x11	7	11	2400 (12x200)				



# BLUE OCEAN PPR SOCKET FUSION FITTINGS

## BLUE OCEAN PPR socket fusion fittings with brass alloy inserts



### Tee FT

Product code	Inside diameter		Quantity per carton, pcs	Product code	Inside diameter		Quantity per carton, pcs
	D, mm	d, mm			D, mm	d, mm	
PPRF/ITT(X)-16x½"	16	½"	140	PPRF/ITT(X)-25x¾"	25	¾"	100
PPRF/ITT(X)-20x½"	20	½"	140	PPRF/ITT(X)-32x½"	32	½"	60
PPRF/ITT(X)-20x¾"	20	¾"	100	PPRF/ITT(X)-32x¾"	32	¾"	60
PPRF/ITT(X)-25x½"	25	½"	100				

Notice: The brass alloy insert is natural yellow colour, also available with nickel plated surface



### Tee hexagonal FT

Product code	Inside diameter		Quantity per carton, pcs	Product code	Inside diameter		Quantity per carton, pcs
	D, mm	d, mm			D, mm	d, mm	
PPRF/ITT(X)-32x1"	32	1"	35	PPRF/ITT(X)-40x1½"	40	1½"	20
PPRF/ITT(X)-40x1"	40	1"	25				

Notice: The brass alloy insert is natural yellow colour, also available with nickel plated surface



### Tee MT

Product code	Inside diameter		Quantity per carton, pcs	Product code	Inside diameter		Quantity per carton, pcs
	D, mm	d, mm			D, mm	d, mm	
PPRF/ETT(X)-16x½"	16	½"	120	PPRF/ETT(X)-25x¾"	25	¾"	80
PPRF/ETT(X)-20x½"	20	½"	120	PPRF/ETT(X)-32x½"	32	½"	50
PPRF/ETT(X)-20x¾"	20	¾"	100	PPRF/ETT(X)-32x¾"	32	¾"	50
PPRF/ETT(X)-25x½"	25	½"	100				

Notice: The brass alloy insert is natural yellow colour, also available with nickel plated surface



### Tee hexagonal MT

Product code	Inside diameter		Quantity per carton, pcs	Product code	Inside diameter		Quantity per carton, pcs
	D, mm	d, mm			D, mm	d, mm	
PPRF/ETT(X)-32x1"	32	1"	30	PPRF/ETT(X)-40x1½"	40	1½"	20
PPRF/ETT(X)-40x1"	40	1"	20				

Notice: The brass alloy insert is natural yellow colour, also available with nickel plated surface

The product produced according to the international Standard ISO: EN ISO15874:2013  
German Standard: DIN 8077:2008; 8078:2008.

# BLUE OCEAN PPR SOCKET FUSION FITTINGS



## Tee FT with wall mount

Product code	Inside diameter		Quantity per carton, pcs	Product code	Inside diameter		Quantity per carton, pcs
	D, mm	d, mm			D, mm	d, mm	
PPRF/ITTC(X)-20x½"	20	½"	80	PPRF/ITTC(X)-25x½"	25	½"	70
PPRF/ITTC(X)-20x¾"	20	¾"	70	PPRF/ITTC(X)-25x¾"	25	¾"	70

Notice: The brass alloy insert is natural yellow colour, also available with nickel plated surface



## Tee MT with wall mount

Product code	Inside diameter		Quantity per carton, pcs	Product code	Inside diameter		Quantity per carton, pcs
	D, mm	d, mm			D, mm	d, mm	
PPRF/ETTC(X)-20x½"	20	½"	70	PPRF/ETTC(X)-25x½"	25	½"	60
PPRF/ETTC(X)-20x¾"	20	¾"	60	PPRF/ETTC(X)-25x¾"	25	¾"	60

Notice: The brass alloy insert is natural yellow colour, also available with nickel plated surface



## Adaptor FT

Product code	Inside diameter		Quantity per carton, pcs	Product code	Inside diameter		Quantity per carton, pcs
	D, mm	d, mm			D, mm	d, mm	
PPRF/IA(X)-16x½"	16	½"	240	PPRF/IA(X)-25x¾"	25	¾"	160
PPRF/IA(X)-20x½"	20	½"	240	PPRF/IA(X)-32x½"	32	½"	150
PPRF/IA(X)-20x¾"	20	¾"	180	PPRF/IA(X)-32x¾"	32	¾"	150
PPRF/IA(X)-25x½"	25	½"	180	PPRF/IA(X)-32x1"	32	1"	96

Notice: The brass alloy insert is natural yellow colour, also available with nickel plated surface



## Adaptor hexagonal FT

Product code	Inside diameter		Quantity per carton, pcs	Product code	Inside diameter		Quantity per carton, pcs
	D, mm	d, mm			D, mm	d, mm	
PPRF/HTIA(X)-32x1"	32	1"	70	PPRF/HTIA(X)-63x1½"	63	1½"	25
PPRF/HTIA(X)-40x1"	40	1"	60	PPRF/HTIA(X)-63x2"	63	2"	20
PPRF/HTIA(X)-40x1¼"	40	1¼"	35	PPRF/HTIA(X)-75x2½"	75	2½"	8
PPRF/HTIA(X)-50x1¼"	50	1¼"	35	PPRF/HTIA(X)-90x3"	90	3"	6
PPRF/HTIA(X)-50x1½"	50	1½"	30				

Notice: The brass alloy insert is natural yellow colour, also available with nickel plated surface



# BLUE OCEAN PPR SOCKET FUSION FITTINGS



## Adaptor MT

Product code	Inside diameter		Quantity per carton, pcs	Product code	Inside diameter		Quantity per carton, pcs
	D, mm	d, mm			D, mm	d, mm	
PPRF/EA(X)-16x½"	16	½"	210	PPRF/EA(X)-25x¾"	25	¾"	120
PPRF/EA(X)-20x½"	20	½"	200	PPRF/EA(X)-32x½"	32	½"	120
PPRF/EA(X)-20x¾"	20	¾"	135	PPRF/EA(X)-32x¾"	32	¾"	120
PPRF/EA(X)-25x½"	25	½"	140	PPRF/EA(X)-32x1"	32	1"	64

Notice: The brass alloy insert is natural yellow colour, also available with nickel plated surface



## Adaptor hexagonal MT

Product code	Inside diameter		Quantity per carton, pcs	Product code	Inside diameter		Quantity per carton, pcs
	D, mm	d, mm			D, mm	d, mm	
PPRF/HTEA(X)-20x½"	20	½"	200	PPRF/HTEA(X)-50x1½"	50	1½"	30
PPRF/HTEA(X)-25x¾"	25	¾"	120	PPRF/HTEA(X)-63x1½"	63	1½"	20
PPRF/HTEA(X)-32x1"	32	1"	50	PPRF/HTEA(X)-63x2"	63	2"	20
PPRF/HTEA(X)-40x1"	40	1"	60	PPRF/HTEA(X)-75x2½"	75	2½"	8
PPRF/HTEA(X)-40x1¼"	40	1¼"	30	PPRF/HTEA(X)-90x3"	90	3"	6
PPRF/HTEA(X)-50x1¼"	50	1¼"	45				

Notice: The brass alloy insert is natural yellow colour, also available with nickel plated surface



## 90° elbow FT

Product code	Inside diameter		Quantity per carton, pcs	Product code	Inside diameter		Quantity per carton, pcs
	D, mm	d, mm			D, mm	d, mm	
PPRF/IT90E(X)-16x½"	16	½"	180	PPRF/IT90E(X)-25x¾"	25	¾"	120
PPRF/IT90E(X)-20x½"	20	½"	180	PPRF/IT90E(X)-32x½"	32	½"	80
PPRF/IT90E(X)-20x¾"	20	¾"	120	PPRF/IT90E(X)-32x¾"	32	¾"	60
PPRF/IT90E(X)-25x½"	25	½"	140	PPRF/IT90E(X)-32x1"	32	1"	60

Notice: The brass alloy insert is natural yellow colour, also available with nickel plated surface



## 90° elbow hexagonal FT

Product code	Inside diameter		Quantity per carton, pcs	Product code	Inside diameter		Quantity per carton, pcs
	D, mm	d, mm			D, mm	d, mm	
PPRF/HIT90E(X)-32x1"	32	1"	45	PPRF/HIT90E(X)-40x1¼"	40	1¼"	20
PPRF/HIT90E(X)-40x1"	40	1"	30				

Notice: The brass alloy insert is natural yellow colour, also available with nickel plated surface

The product produced according to the international Standard ISO: EN ISO15874:2013  
German Standard: DIN 8077:2008; 8078:2008.

# BLUE OCEAN PPR SOCKET FUSION FITTINGS



## 90° elbow MT

Product code	Inside diameter		Quantity per carton, pcs	Product code	Inside diameter		Quantity per carton, pcs
	D, mm	d, mm			D, mm	d, mm	
PPRF/ET90E(X)-16x½"	16	½"	160	PPRF/ET90E(X)-25x¾"	25	¾"	100
PPRF/ET90E(X)-20x½"	20	½"	160	PPRF/ET90E(X)-32x½"	32	½"	50
PPRF/ET90E(X)-20x¾"	20	¾"	100	PPRF/ET90E(X)-32x¾"	32	¾"	50
PPRF/ET90E(X)-25x½"	25	½"	120	PPRF/ET90E(X)-32x1"	32	1"	40

Notice: The brass alloy insert is natural yellow colour, also available with nickel plated surface



## 90° elbow hexagonal MT

Product code	Inside diameter		Quantity per carton, pcs	Product code	Inside diameter		Quantity per carton, pcs
	D, mm	d, mm			D, mm	d, mm	
PPRF/HET90E(X)-32x1"	32	1"	40	PPRF/HET90E(X)-40x1¼"	40	1¼"	20
PPRF/HET90E(X)-40x1"	40	1"	25				

Notice: The brass alloy insert is natural yellow colour, also available with nickel plated surface



## Back plate 90° elbow FT

Product code	Inside diameter		Quantity per carton, pcs	Product code	Inside diameter		Quantity per carton, pcs
	D, mm	d, mm			D, mm	d, mm	
PPRF/IT90E-1(X)-16x½"	16	½"	120	PPRF/IT90E-1(X)-25x½"	25	½"	100
PPRF/IT90E-1(X)-20x½"	20	½"	120	PPRF/IT90E-1(X)-25x¾"	25	¾"	100
PPRF/IT90E-1(X)-20x¾"	20	¾"	100				

Notice: The brass alloy insert is natural yellow colour, also available with nickel plated surface



## Back plate 90° elbow MT

Product code	Inside diameter		Quantity per carton, pcs	Product code	Inside diameter		Quantity per carton, pcs
	D, mm	d, mm			D, mm	d, mm	
PPRF/ET90E-1(X)-16x½"	16	½"	120	PPRF/ET90E-1(X)-25x½"	25	½"	100
PPRF/ET90E-1(X)-20x½"	20	½"	120	PPRF/ET90E-1(X)-25x¾"	25	¾"	80
PPRF/ET90E-1(X)-20x¾"	20	¾"	100				

Notice: The brass alloy insert is natural yellow colour, also available with nickel plated surface



## Wing back 90° elbow FT

Product code	Inside diameter		Quantity per carton, pcs	Product code	Inside diameter		Quantity per carton, pcs
	D, mm	d, mm			D, mm	d, mm	
PPRF/IT90E-2(X)-20x½"	20	½"	120				

Notice: The brass alloy insert is natural yellow colour, also available with nickel plated surface



UNLIMITED INNOVATIONS

The product produced according to the international Standard ISO: EN ISO15874:2013  
German Standard: DIN 8077:2008; 8078:2008.



# BLUE OCEAN PPR SOCKET FUSION FITTINGS



## Wing back 90° elbow MT

Product code	Inside diameter		Quantity per carton, pcs	Product code	Inside diameter		Quantity per carton, pcs
	D, mm	d, mm			D, mm	d, mm	
PPRF/ET90E-2(X)-20x½"	20	½"	120				

Notice: The brass alloy insert is natural yellow colour, also available with nickel plated surface



## 90° elbow FT for gypsum wall mount

Product code	Inside diameter		Quantity per carton, pcs	Product code	Inside diameter		Quantity per carton, pcs
	D, mm	d, mm			D, mm	d, mm	
PPRF/IT90EWM(X)-20x½"	20	½"	70	PPRF/IT90EWM(X)-25x¾"	25	¾"	50

Notice: The brass alloy insert is natural yellow colour, also available with nickel plated surface



## Double 90° elbow FT with wall mount

Product code	Inside diameter		Quantity per carton, pcs	Product code	Inside diameter		Quantity per carton, pcs
	D, mm	d, mm			D, mm	d, mm	
PPRF/ITWMD90E(X)-20x½"	20	½"	40				

Notice: The brass alloy insert is natural yellow colour, also available with nickel plated surface



## Adjustable water intake FT

Product code	Inside diameter		Quantity per carton, pcs
	D, mm	d, mm	
PPRF/ITUWMC(X)-20x½"	20	½"	20
PPRF/ITUWMC-2(X)-20x½" (3 position)	20	½"	16
PPRF/ITUWMC(X)-25x½"	25	½"	15

Notice: The brass alloy insert is natural yellow colour, also available with nickel plated surface



## Single/Double PPR joint manifold block FT

Product code	Inside diameter		Quantity per carton, pcs
	D, mm	d, mm	
PPRF/FCEUMIT(X)-32x½"FTx1	32	½"x1	60
PPRF/FCEUMIT(X)-32x½"FTx2	32	½"x2	35
PPRF/FCEUMIT(X)-40x½"FTx1	40	½"x1	40
PPRF/FCEUMIT(X)-40x½"FTx2	40	½"x2	24

Notice: The brass alloy insert is natural yellow colour, also available with nickel plated surface

The product produced according to the international Standard ISO: EN ISO15874:2013  
German Standard: DIN 8077:2008; 8078:2008.

# BLUE OCEAN PPR SOCKET FUSION FITTINGS



## Single/Double PPR joint manifold block MT

Product code	Inside diameter		Quantity per carton, pcs
	D, mm	d, mm	
PPRF/FCEUMET(X)-32x½"MTx1	32	½"x1	60
PPRF/FCEUMET(X)-32x½"MTx2	32	½"x2	30
PPRF/FCEUMET(X)-40x½"MTx1	40	½"x1	40
PPRF/FCEUMET(X)-40x½"MTx2	40	½"x2	24

Notice: The brass alloy insert is natural yellow colour, also available with nickel plated surface



## Reducer with cap nut FT

Product code	Inside diameter		Quantity per carton, pcs	Product code	Inside diameter		Quantity per carton, pcs
	D, mm	d, mm			D, mm	d, mm	
PPRF/CA-FTNB(X)-16x½"	16	½"	210	PPRF/CA-FTNB(X)-25x¾"	25	¾"	160
PPRF/CA-FTNB(X)-20x½"	20	½"	200	PPRF/CA-FTNB(X)-32x1"	32	1"	110
PPRF/CA-FTNB(X)-20x¾"	20	¾"	180				

Notice: The brass alloy insert is natural yellow colour, also available with nickel plated surface



## Reducer with euro cone FT

Product code	Inside diameter		Quantity per carton, pcs	Product code	Inside diameter		Quantity per carton, pcs
	D, mm	d, mm			D, mm	d, mm	
PPRF/REC(X)-20x¾"	20	¾"	180				

Notice: The brass alloy insert is natural yellow colour, also available with nickel plated surface



## 90° elbow with cap nut FT

Product code	Inside diameter		Quantity per carton, pcs	Product code	Inside diameter		Quantity per carton, pcs
	D, mm	d, mm			D, mm	d, mm	
PPRF/90E-CNF(X)-16x½"	16	½"	300	PPRF/90E-CNF(X)-25x½"	25	½"	200
PPRF/90E-CNF(X)-20x½"	20	½"	240	PPRF/90E-CNF(X)-25x¾"	25	¾"	160
PPRF/90E-CNF(X)-20x¾"	20	¾"	220				

Notice: The brass alloy insert is natural yellow colour, also available with nickel plated surface





# BLUE OCEAN PPR SOCKET FUSION FITTINGS



## Joint coupling with cap nut FT

Product code	Inside diameter		Quantity per carton, pcs
	D, mm	d, mm	
PPRF/PPRCA-FTNBA(X)-16x½"	16	½"	240
PPRF/PPRCA-FTNBA(X)-20x½"	20	½"	200
PPRF/PPRCA-FTNBA(X)-20x¾"	20	¾"	200
PPRF/PPRCA-FTNBA(X)-25x½"	25	½"	150
PPRF/PPRCA-FTNBA(X)-25x¾"	25	¾"	150
PPRF/PPRCA-FTNBA(X)-25x1"	25	1"	120
PPRF/PPRCA-FTNBA(X)-32x¾"	32	¾"	120
PPRF/PPRCA-FTNBA(X)-32x1"	32	1"	100

Notice: The brass alloy insert is natural yellow colour, also available with nickel plated surface



## Joint 90° elbow with cap nut FT

Product code	Inside diameter		Quantity per carton, pcs	Product code	Inside diameter		Quantity per carton, pcs
	D, mm	d, mm			D, mm	d, mm	
PPRF/90E-CFTNBA(X)-16x½"	16	½"	300	PPRF/90E-CFTNBA(X)-25x1"	25	1"	160
PPRF/90E-CFTNBA(X)-20x¾"	20	¾"	240	PPRF/90E-CFTNBA(X)-32x¾"	32	¾"	150
PPRF/90E-CFTNBA(X)-25x¾"	25	¾"	200	PPRF/90E-CFTNBA(X)-32x1"	32	1"	100

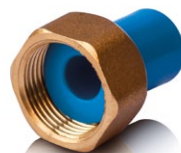
Notice: The brass alloy insert is natural yellow colour, also available with nickel plated surface



## Joint tee with cap nut FT

Product code	Inside diameter		Quantity per carton, pcs	Product code	Inside diameter		Quantity per carton, pcs
	D, mm	d, mm			D, mm	d, mm	
PPRF/ET-CFTNBA(X)-16x½"	16	½"	240	PPRF/ET-CFTNBA(X)-25x1"	25	1"	100
PPRF/ET-CFTNBA(X)-20x½"	20	½"	200	PPRF/ET-CFTNBA(X)-32x½"	32	½"	80
PPRF/ET-CFTNBA(X)-20x¾"	20	¾"	200	PPRF/ET-CFTNBA(X)-32x¾"	32	¾"	80
PPRF/ET-CFTNBA(X)-25x½"	25	½"	100	PPRF/ET-CFTNBA(X)-32x1"	32	1"	80
PPRF/ET-CFTNBA(X)-25x¾"	25	¾"	100				

Notice: The brass alloy insert is natural yellow colour, also available with nickel plated surface



## Joint adaptor with cap nut FT

Product code	Inside diameter		Quantity per carton, pcs	Product code	Inside diameter		Quantity per carton, pcs
	D, mm	d, mm			D, mm	d, mm	
PPRF/FTN-PPRFH(X)-16x½"	16	½"	400	PPRF/FTN-PPRFH(X)-25x1"	25	1"	200
PPRF/FTN-PPRFH(X)-20x¾"	20	¾"	300				

Notice: The brass alloy insert is natural yellow colour, also available with nickel plated surface

The product produced according to the international Standard ISO: EN ISO15874:2013  
German Standard: DIN 8077:2008; 8078:2008.

# BLUE OCEAN PPR SOCKET FUSION FITTINGS



## Weld-in saddle MT

Product code	Inside diameter		Quantity per carton, pcs	Product code	Inside diameter		Quantity per carton, pcs
	D, mm	d, mm			D, mm	d, mm	
PPRF/WSMT(X)-40x25x1/2"	40x25	1/2"	140	PPRF/WSMT(X)-90x25x1/2"	90x25	1/2"	140
PPRF/WSMT(X)-40x25x3/4"	40x25	3/4"	120	PPRF/WSMT(X)-90x25x3/4"	90x25	3/4"	100
PPRF/WSMT(X)-50x25x1/2"	50x25	1/2"	140	PPRF/WSMT(X)-90x32x1"	90x32	1"	60
PPRF/WSMT(X)-50x25x3/4"	50x25	3/4"	120	PPRF/WSMT(X)-110x25x1/2"	110x25	1/2"	140
PPRF/WSMT(X)-63x25x1/2"	63x25	1/2"	140	PPRF/WSMT(X)-110x25x3/4"	110x25	3/4"	100
PPRF/WSMT(X)-63x25x3/4"	63x25	3/4"	120	PPRF/WSMT(X)-110x32x1"	110x32	1"	60
PPRF/WSMT(X)-75x25x1/2"	75x25	1/2"	140	PPRF/WSMT(X)-125x25x1/2"	125x25	1/2"	140
PPRF/WSMT(X)-75x25x3/4"	75x25	3/4"	120	PPRF/WSMT(X)-125x25x3/4"	125x25	3/4"	100
PPRF/WSMT(X)-75x32x1"	75x32	1"	60	PPRF/WSMT(X)-125x32x1"	125x32	1"	60

Notice: The brass alloy insert is natural yellow colour, also available with nickel plated surface



## Weld-in saddle FT

Product code	Inside diameter		Quantity per carton, pcs	Product code	Inside diameter		Quantity per carton, pcs
	D, mm	d, mm			D, mm	d, mm	
PPRF/WSFT(X)-40x25x1/2"	40x25	1/2"	160	PPRF/WSFT(X)-90x25x1/2"	90x25	1/2"	160
PPRF/WSFT(X)-40x25x3/4"	40x25	3/4"	140	PPRF/WSFT(X)-90x25x3/4"	90x25	3/4"	120
PPRF/WSFT(X)-50x25x1/2"	50x25	1/2"	160	PPRF/WSFT(X)-90x32x1"	90x32	1"	70
PPRF/WSFT(X)-50x25x3/4"	50x25	3/4"	140	PPRF/WSFT(X)-110x25x1/2"	110x25	1/2"	160
PPRF/WSFT(X)-63x25x1/2"	63x25	1/2"	160	PPRF/WSFT(X)-110x25x3/4"	110x25	3/4"	120
PPRF/WSFT(X)-63x25x3/4"	63x25	3/4"	140	PPRF/WSFT(X)-110x32x1"	110x32	1"	70
PPRF/WSFT(X)-75x25x1/2"	75x25	1/2"	160	PPRF/WSFT(X)-125x25x1/2"	125x25	1/2"	160
PPRF/WSFT(X)-75x25x3/4"	75x25	3/4"	140	PPRF/WSFT(X)-125x25x3/4"	125x25	3/4"	120
PPRF/WSFT(X)-75x32x1"	75x32	1"	70	PPRF/WSFT(X)-125x32x1"	125x32	1"	70

Notice: The brass alloy insert is natural yellow colour, also available with nickel plated surface

## BLUE OCEAN PPR flat seat union adaptor fittings



### Hexagonal union adaptor MT

Product code	Inside diameter		Quantity per carton, pcs	Product code	Inside diameter		Quantity per carton, pcs
	D, mm	d, mm			D, mm	d, mm	
PPRF/UAM(X)-20x1/2"	20	1/2"	180	PPRF/UAM(X)-40x1 1/4"	40	1 1/4"	45
PPRF/UAM(X)-25x3/4"	25	3/4"	120	PPRF/UAM(X)-50x1 1/2"	50	1 1/2"	30
PPRF/UAM(X)-32x1"	32	1"	70	PPRF/UAM(X)-63x2"	63	2"	15

Notice: The brass alloy insert is natural yellow colour, also available with nickel plated surface



# BLUE OCEAN PPR SOCKET FUSION FITTINGS



## Hexagonal union adaptor FT

Product code	Inside diameter		Quantity per carton, pcs	Product code	Inside diameter		Quantity per carton, pcs
	D, mm	d, mm			D, mm	d, mm	
PPRF/UAF(X)-20x1/2"	20	1/2"	210	PPRF/UAF(X)-40x1 1/4"	40	1 1/4"	45
PPRF/UAF(X)-25x3/4"	25	3/4"	120	PPRF/UAF(X)-50x1 1/2"	50	1 1/2"	30
PPRF/UAF(X)-32x1"	32	1"	80	PPRF/UAF(X)-63x2"	63	2"	15

Notice: The brass alloy insert is natural yellow colour, also available with nickel plated surface



## PPR union adaptor MT

Product code	Inside diameter		Quantity per carton, pcs	Product code	Inside diameter		Quantity per carton, pcs
	D, mm	d, mm			D, mm	d, mm	
PPRF/UA-PPRMT(X)-20x1/2"	20	1/2"	120				

Notice: The brass alloy insert is natural yellow colour, also available with nickel plated surface



## PPR union adaptor FT

Product code	Inside diameter		Quantity per carton, pcs	Product code	Inside diameter		Quantity per carton, pcs
	D, mm	d, mm			D, mm	d, mm	
PPRF/UA-PPRFT(X)-20x1/2"	20	1/2"	160				

Notice: The brass alloy insert is natural yellow colour, also available with nickel plated surface



## Demountable joint FT-PPR

Product code	Inside diameter		Quantity per carton, pcs	Product code	Inside diameter		Quantity per carton, pcs
	D, mm	d, mm			D, mm	d, mm	
PPRF/UAF-2(X)-20x1/2"	20	1/2"	300	PPRF/UAF-2(X)-32x1"	32	1"	120
PPRF/UAF-2(X)-25x3/4"	25	3/4"	200				

Notice: The brass alloy insert is natural yellow colour, also available with nickel plated surface



## Demountable joint MT-PPR

Product code	Inside diameter		Quantity per carton, pcs	Product code	Inside diameter		Quantity per carton, pcs
	D, mm	d, mm			D, mm	d, mm	
PPRF/UAM-2(X)-20x1/2"	20	1/2"	260	PPRF/UAM-2(X)-32x1"	32	1"	80
PPRF/UAM-2(X)-25x3/4"	25	3/4"	150				

Notice: The brass alloy insert is natural yellow colour, also available with nickel plated surface

The product produced according to the international Standard ISO: EN ISO15874:2013  
German Standard: DIN 8077:2008; 8078:2008.

# BLUE OCEAN PPR SOCKET FUSION FITTINGS



## Demountable joint PPR

Product code	Inside diameter		Quantity per carton, pcs	Product code	Inside diameter		Quantity per carton, pcs
	D, mm	d, mm			D, mm	d, mm	
PPRF/UA-2(X)-20x20	20	20	260	PPRF/UA-2(X)-32x32	32	32	80
PPRF/UA-2(X)-25x25	25	25	150				

Notice: The brass alloy insert is natural yellow colour, also available with nickel plated surface



## PPR union adaptor for cold water use

Product code	Inside diameter		Quantity per carton, pcs	Product code	Inside diameter		Quantity per carton, pcs
	D, mm	d, mm			D, mm	d, mm	
PPRF/UA-PPR(X)-20	20	250	210	PPRF/UA-PPR(X)-40	40	48	45
PPRF/UA-PPR(X)-25	25	150	120	PPRF/UA-PPR(X)-50	50	48	30
PPRF/UA-PPR(X)-32	32	80	80				

Notice: The brass alloy insert is natural yellow colour, also available with nickel plated surface

# BLUE OCEAN VALVES FOR PPR PIPING SYSTEM

## BLUE OCEAN stop valves for PPR piping systems



### Stop valve Type 1

Product code	Inside diameter D, mm	Quantity per carton, pcs	Product code	Inside diameter D, mm	Quantity per carton, pcs
PPRF/SV(X)-25	25	50	PPRF/SV(X)-75	75	6
PPRF/SV(X)-32	32	45	PPRF/SV(X)-90	90	4
PPRF/SV(X)-40	40	20	PPRF/SV(X)-110	110	2
PPRF/SV(X)-50	50	15			

Notice: Brass alloy cartridge with chrome plated surface



### Stop valve short

Product code	Inside diameter D, mm	Quantity per carton, pcs	Product code	Inside diameter D, mm	Quantity per carton, pcs
PPRF/SSV(X)-25	25	70			

Notice: Brass alloy cartridge is natural yellow colour



UNLIMITED INNOVATIONS

The product produced according to the international Standard ISO: EN ISO15874:2013  
German Standard: DIN 8077:2008; 8078:2008.



# BLUE OCEAN VALVES FOR PPR PIPING SYSTEM



## Stop valve Type 2

Product code	Inside diameter D, mm	Quantity per carton, pcs	Product code	Inside diameter D, mm	Quantity per carton, pcs
PPRF/LSV(X)-20	20	50	PPRF/LSV(X)-50	50	15
PPRF/LSV(X)-25	25	40	PPRF/LSV(X)-63	63	8
PPRF/LSV(X)-32	32	20	PPRF/LSV(X)-75	75	6
PPRF/LSV(X)-40	40	20			

Notice: Brass alloy cartridge is natural yellow colour



## Concealed stop valve

Product code	Inside diameter D, mm	Quantity per carton, pcs	Product code	Inside diameter D, mm	Quantity per carton, pcs
PPRF/WSV(X)-20	20	40	PPRF/WSV(X)-32	32	18
PPRF/WSV(X)-25	25	30			

Notice: The brass alloy cartridge is natural yellow colour and chrome plated body surface



## Inclined stop valve

Product code	Inside diameter D, mm	Quantity per carton, pcs	Product code	Inside diameter D, mm	Quantity per carton, pcs
PPRF/IV(X)-20	20	50	PPRF/IV(X)-32	32	24
PPRF/IV(X)-25	25	32			

Notice: Brass alloy cartridge is natural yellow colour



## Inclined stop valve with return flow preventor

Product code	Inside diameter D, mm	Quantity per carton, pcs	Product code	Inside diameter D, mm	Quantity per carton, pcs
PPRF/IV-RFP(X)-20	20	50	PPRF/IV-RFP(X)-32	32	24
PPRF/IV-RFP(X)-25	25	32			

Notice: Brass alloy cartridge is natural yellow colour



## PPR straight stop valve for heating

Product code	Inside diameter D, mm	d, mm	Quantity per carton, pcs	Product code	Inside diameter D, mm	d, mm	Quantity per carton, pcs
PPRF/PPR/SSVH(X)-20x½"	20	½"	50	PPRF/PPR/SSVH(X)-25x¾"	25	¾"	40

Notice: The brass alloy insert is natural yellow colour, also available with nickel plated surface

The product produced according to the international Standard ISO: EN ISO15874:2013  
German Standard: DIN 8077:2008; 8078:2008.

# BLUE OCEAN VALVES FOR PPR PIPING SYSTEM



## PPR elbow stop valve for heating

Product code	Inside diameter		Quantity per carton, pcs	Product code	Inside diameter		Quantity per carton, pcs
	D, mm	d, mm			D, mm	d, mm	
PPRF/PPR/ESVH(X)-20x½"	20	½"	50	PPRF/PPR/ESVH(X)-25x¾"	25	¾"	40

Notice: The brass alloy insert is natural yellow colour, also available with nickel plated surface



## Concealed valve with ceramic cartridge

Product code	Inside diameter		Quantity per carton, pcs	Product code	Inside diameter		Quantity per carton, pcs
	D, mm	D, mm			D, mm	D, mm	
PPRF/PPR/CVCC(X)-20	20		20	PPRF/PPR/CVCC(X)-25	25		20



## Gate valve with PPR body

Product code	Inside diameter		Quantity per carton, pcs	Product code	Inside diameter		Quantity per carton, pcs
	D, mm	D, mm			D, mm	D, mm	
PPRF/PPR/GV(X)-20	20		20	PPRF/PPR/GV(X)-25	25		20

## BLUE OCEAN ball valves for PPR piping system



### Brass alloy ball valve with union adaptor and two PPR fusion ends

Product code	Inside diameter		Quantity per carton, pcs	Product code	Inside diameter		Quantity per carton, pcs
	D mm	x R, inch			D mm	x R, inch	
PPRF/BV(X)-20x1/2"	20	1/2"	60	PPRF/BV(X)-40x1¼"	40	1¼"	10
PPRF/BV(X)-25x3/4"	25	3/4"	50	PPRF/BV(X)-50x1½"	50	1½"	8
PPRF/BV(X)-32x1"	32	1"	30	PPRF/BV(X)-63x2"	63	2"	6

Notice: The brass alloy insert is natural yellow colour, also available with nickel plated surface



### Brass alloy ball valve with union adaptor and PPR fusion end / FT end

Product code	Inside diameter		Quantity per carton, pcs	Product code	Inside diameter		Quantity per carton, pcs
	D, mm	d, mm			D, mm	d, mm	
PPRF/BVF(X)-20x½"	20	½"	80	PPRF/BVF(X)-40x1¼"	40	1¼"	20
PPRF/BVF(X)-25x¾"	25	¾"	70	PPRF/BVF(X)-50x1½"	50	1½"	10
PPRF/BVF(X)-32x1"	32	1"	40	PPRF/BVF(X)-63x2"	63	2"	8

Notice: The brass alloy insert is natural yellow colour, also available with nickel plated surface



UNLIMITED INNOVATIONS

The product produced according to the international Standard ISO: EN ISO15874:2013  
German Standard: DIN 8077:2008; 8078:2008.



# BLUE OCEAN VALVES FOR PPR PIPING SYSTEM



## Brass alloy ball valve with union adaptor and PPR fusion end / MT end

Product code	Inside diameter		Quantity per carton, pcs	Product code	Inside diameter		Quantity per carton, pcs
	D, mm	d, mm			D, mm	d, mm	
PPRF/BVM(X)-20x1/2"	20	1/2"	90	PPRF/BVM(X)-40x1 1/4"	40	1 1/4"	15
PPRF/BVM(X)-25x3/4"	25	3/4"	60	PPRF/BVM(X)-50x1 1/2"	50	1 1/2"	8
PPRF/BVM(X)-32x1"	32	1"	40	PPRF/BVM(X)-63x2"	63	2"	6

Notice: The brass alloy insert is natural yellow colour, also available with nickel plated surface



## PPR ball valve (brass alloy ball) for hot water use - long handle

Product code	Inside diameter D mm	Quantity per carton, pcs	Product code	Inside diameter		Quantity per carton, pcs
				D mm	x R, inch	
PPRF/BV/PPR/HW-1(X)-20	20	120	PPRF/BV/PPR/HW-1(X)-50	50		20
PPRF/BV/PPR/HW-1(X)-25	25	80	PPRF/BV/PPR/HW-1(X)-63	63		10
PPRF/BV/PPR/HW-1(X)-32	32	50	PPRF/BV/PPR/HW-1(X)-75	75		4
PPRF/BV/PPR/HW-1(X)-40	40	30				



## PPR ball valve (brass alloy ball) for hot water use - butterfly handle

Product code	Inside diameter D mm	Quantity per carton, pcs	Product code	Inside diameter		Quantity per carton, pcs
				D mm	x R, inch	
PPRF/BV/PPR/HW-1B(X)-20	20	120	PPRF/BV/PPR/HW-1B(X)-32	32		50
PPRF/BV/PPR/HW-1B(X)-25	25	80				



## PPR ball valve (PPSU ball) for hot water use - long handle

Product code	Inside diameter D mm	Quantity per carton, pcs	Product code	Inside diameter		Quantity per carton, pcs
				D mm	x R, inch	
PPRF/BV/PPR/HW-2(X)-20	20	120	PPRF/BV/PPR/HW-2(X)-50	50		20
PPRF/BV/PPR/HW-2(X)-25	25	80	PPRF/BV/PPR/HW-2(X)-63	63		10
PPRF/BV/PPR/HW-2(X)-32	32	50	PPRF/BV/PPR/HW-2(X)-75	75		4
PPRF/BV/PPR/HW-2(X)-40	40	30				



## PPR ball valve (PPSU ball) for hot water use - butterfly handle

Product code	Inside diameter D mm	Quantity per carton, pcs	Product code	Inside diameter		Quantity per carton, pcs
				D mm	x R, inch	
PPRF/BV/PPR/HW-2B(X)-20	20	120	PPRF/BV/PPR/HW-2B(X)-32	32		50
PPRF/BV/PPR/HW-2B(X)-25	25	80				

The product produced according to the international Standard ISO: EN ISO15874:2013  
German Standard: DIN 8077:2008; 8078:2008.

# BLUE OCEAN VALVES FOR PPR PIPING SYSTEM



## PPR ball valve (ABS ball) for cold water use - long handle

Product code	Inside diameter D mm	Quantity per carton, pcs	Product code	Inside diameter D mm x R, inch	Quantity per carton, pcs
PPRF/BV/PPR/CW(X)-20	20	120	PPRF/BV/PPR/CW(X)-40	40	30
PPRF/BV/PPR/CW(X)-25	25	80	PPRF/BV/PPR/CW(X)-50	50	20
PPRF/BV/PPR/CW(X)-32	32	50	PPRF/BV/PPR/CW(X)-63	63	10



## PPR ball valve (ABS ball) for cold water use - butterfly handle

Product code	Inside diameter D mm	Quantity per carton, pcs	Product code	Inside diameter D mm x R, inch	Quantity per carton, pcs
PPRF/BV/PPR/CW - B(X)-20	20	120	PPRF/BV/PPR/CW - B(X)-32	32	50
PPRF/BV/PPR/CW - B(X)-25	25	80			



## PPR straight ball valve (brass alloy ball) for heating

Product code	Inside diameter		Quantity per carton, pcs	Product code	Inside diameter		Quantity per carton, pcs
	D, mm	d, mm			D, mm	d, mm	
PPRF/PPR/SBVH-1(X)-20x½"	20	½"	50	PPRF/PPR/SBVH-1(X)-25x¾"	25	¾"	40

Notice: The brass alloy insert is its natural yellow colour, also available with a nickel plated surface



## PPR straight ball valve (PPSU ball) for heating

Product code	Inside diameter		Quantity per carton, pcs	Product code	Inside diameter		Quantity per carton, pcs
	D, mm	d, mm			D, mm	d, mm	
PPRF/PPR/SBVH-2(X)-20x½"	20	½"	50	PPRF/PPR/SBVH-2(X)-25x¾"	25	¾"	40

Notice: The brass alloy insert is its natural yellow colour, also available with a nickel plated surface



## PPR elbow ball valve (brass alloy ball) for heating

Product code	Inside diameter		Quantity per carton, pcs	Product code	Inside diameter		Quantity per carton, pcs
	D, mm	d, mm			D, mm	d, mm	
PPRF/PPR/EBVH-1(X)-20x½"	20	½"	50	PPRF/PPR/EBVH-1(X)-25x¾"	25	¾"	40

Notice: The brass alloy insert is its natural yellow colour, also available with a nickel plated surface





# BLUE OCEAN VALVES FOR PPR PIPING SYSTEM



## PPR elbow ball valve (PPSU ball) for heating

Product code	Inside diameter		Quantity per carton, pcs	Product code	Inside diameter		Quantity per carton, pcs
	D, mm	d, mm			D, mm	d, mm	
PPRF/PPR/EBVH-2(X)-20x½"	20	½"	50	PPRF/PPR/EBVH-2(X)-25x¾"	25	¾"	40

Notice: The brass alloy insert is its natural yellow colour, also available with a nickel plated surface



## PPR ball valve (brass alloy ball) with union adaptor and two PPR fusion ends for hot water use - long handle

Product code	Inside diameter D, mm	Quantity per carton, pcs	Product code	Inside diameter D, mm	Quantity per carton, pcs
PPRF/BVUA-HW-1/PPR(X)-25	25	32	PPRF/BVUA-HW-1/PPR(X)-50	50	10
PPRF/BVUA-HW-1/PPR(X)-32	32	24	PPRF/BVUA-HW-1/PPR(X)-63	63	6



## PPR ball valve (brass alloy ball) with union adaptor and two PPR fusion ends for hot water use - butterfly handle

Product code	Inside diameter D, mm	Quantity per carton, pcs	Product code	Inside diameter D, mm	Quantity per carton, pcs
PPRF/BVUA-HW-1B/PPR(X)-25	25	32			



## PPR ball valve (PPSU ball) with union adaptor and two PPR fusion ends for hot water use - long handle

Product code	Inside diameter D, mm	Quantity per carton, pcs	Product code	Inside diameter D, mm	Quantity per carton, pcs
PPRF/BVUA-HW-2/PPR(X)-25	25	32	PPRF/BVUA-HW-2/PPR(X)-50	50	10
PPRF/BVUA-HW-2/PPR(X)-32	32	24	PPRF/BVUA-HW-2/PPR(X)-63	63	6



## PPR ball valve (PPSU ball) with union adaptor and two PPR fusion ends for hot water use - butterfly handle

Product code	Inside diameter D, mm	Quantity per carton, pcs	Product code	Inside diameter D, mm	Quantity per carton, pcs
PPRF/BVUA-HW-2B/PPR(X)-25	25	32			

The product produced according to the international Standard ISO: EN ISO15874:2013  
German Standard: DIN 8077:2008; 8078:2008.

# BLUE OCEAN VALVES FOR PPR PIPING SYSTEM



PPR ball valve (ABS ball) with union adaptor and two PPR fusion ends for cold water use - long handle

Product code	Inside diameter D, mm	Quantity per carton, pcs	Product code	Inside diameter D, mm	Quantity per carton, pcs
PPRF/BVUA-CW/PPR(X)-20	20	40	PPRF/BVUA-CW/PPR(X)-40	40	12
PPRF/BVUA-CW/PPR(X)-25	25	32	PPRF/BVUA-CW/PPR(X)-50	50	10
PPRF/BVUA-CW/PPR(X)-32	32	24	PPRF/BVUA-CW/PPR(X)-63	63	6



PPR ball valve (ABS ball) with union adaptor and two PPR fusion ends for cold water use - butterfly handle

Product code	Inside diameter D, mm	Quantity per carton, pcs	Product code	Inside diameter D, mm	Quantity per carton, pcs
PPRF/BVUA-CW - B/PPR(X)-20	20	40	PPRF/BVUA-CW - B/PPR(X)-32	32	24
PPRF/BVUA-CW - B/PPR(X)-25	25	32			



PPR ball valve (brass alloy ball) for hot water use with FT + FT ends - long handle

Product code	Inside diameter D, mm x R, inch	Quantity per carton, pcs
PPRF/BV-HW-1/PPR(X)-½" FFT	½"	50
PPRF/BV-HW-1/PPR(X)-¾" FFT	¾"	40



PPR ball valve (brass alloy ball) for hot water use with FT + FT ends - butterfly handle

Product code	Inside diameter D, mm x R, inch	Quantity per carton, pcs
PPRF/BV-HW-1B/PPR(X)-½" FFT	½"	75
PPRF/BV-HW-1B/PPR(X)-¾" FFT	¾"	60



PPR ball valve (PPSU ball) for hot water use with FT + FT ends - long handle

Product code	Inside diameter D, mm x R, inch	Quantity per carton, pcs
PPRF/BV-HW-2/PPR(X)-½" FFT	½"	50
PPRF/BV-HW-2/PPR(X)-¾" FFT	¾"	40



# BLUE OCEAN VALVES FOR PPR PIPING SYSTEM



## PPR ball valve (PPSU ball) for hot water use with FT + FT ends - butterfly handle

Product code	Inside diameter D, mm x R, inch	Quantity per carton, pcs
PPRF/BV-HW-2B/PPR(X)-½" FFT	½"	75
PPRF/BV-HW-2B/PPR(X)-¾" FFT	¾"	60



## PPR ball valve (ABS ball) for cold water use with FT + FT ends - long handle

Product code	Inside diameter D, mm x R, inch	Quantity per carton, pcs
PPRF/BV-CW/PPR(X)-½" FFT	½"	50
PPRF/BV-CW/PPR(X)-¾" FFT	¾"	40



## PPR ball valve (ABS ball) for cold water use with FT + FT ends - butterfly handle

Product code	Inside diameter D, mm x R, inch	Quantity per carton, pcs
PPRF/BV-CW-B/PPR(X)-½" FFT	½"	75
PPRF/BV-CW-B/PPR(X)-¾" FFT	¾"	60



## PPR ball valve (brass alloy ball) for hot water use with FT + MT ends - long handle

Product code	Inside diameter D, mm x R, inch	Quantity per carton, pcs
PPRF/BV-HW-1/PPR(X)-½" FMT	½"	50
PPRF/BV-HW-1/PPR(X)-¾" FMT	¾"	40



## PPR ball valve (brass alloy ball) for hot water use with FT + MT ends - butterfly handle

Product code	Inside diameter D, mm x R, inch	Quantity per carton, pcs
PPRF/BV-HW-1B/PPR(X)-½" FMT	½"	75
PPRF/BV-HW-1B/PPR(X)-¾" FMT	¾"	60



## PPR ball valve (PPSU ball) for hot water use with FT + MT ends - long handle

Product code	Inside diameter D, mm x R, inch	Quantity per carton, pcs
PPRF/BV-HW-2/PPR(X)-½" FMT	½"	50
PPRF/BV-HW-2/PPR(X)-¾" FMT	¾"	40

The product produced according to the international Standard ISO: EN ISO15874:2013  
German Standard: DIN 8077:2008; 8078:2008.

# BLUE OCEAN VALVES FOR PPR PIPING SYSTEM



## PPR ball valve (PPSU ball) for hot water use with FT + MT ends - butterfly handle

Product code	Inside diameter D, mm x R, inch	Quantity per carton, pcs
PPRF/BV-HW-2B/PPR(X)-1/2" FMT	1/2"	75
PPRF/BV-HW-2B/PPR(X)-3/4" FMT	3/4"	60



## PPR ball valve (ABS ball) for cold water use with FT + MT ends - long handle

Product code	Inside diameter D, mm x R, inch	Quantity per carton, pcs
PPRF/BV-CW/PPR(X)-1/2" FMT	1/2"	50
PPRF/BV-CW/PPR(X)-3/4" FMT	3/4"	40



## PPR ball valve (ABS ball) for cold water use with FT + MT ends - butterfly handle

Product code	Inside diameter D, mm x R, inch	Quantity per carton, pcs
PPRF/BV-CW-B/PPR(X)-1/2" FMT	1/2"	75
PPRF/BV-CW-B/PPR(X)-3/4" FMT	3/4"	60



## PPR ball valve (brass alloy ball) for hot water use with MT + MT ends - long handle

Product code	Inside diameter D, mm x R, inch	Quantity per carton, pcs
PPRF/BV-HW-1/PPR(X)-1/2" MMT	1/2"	50
PPRF/BV-HW-1/PPR(X)-3/4" MMT	3/4"	40



## PPR ball valve (brass alloy ball) for hot water use with MT + MT ends - butterfly handle

Product code	Inside diameter D, mm x R, inch	Quantity per carton, pcs
PPRF/BV-HW-1B/PPR(X)-1/2" MMT	1/2"	75
PPRF/BV-HW-1B/PPR(X)-3/4" MMT	3/4"	60



# BLUE OCEAN VALVES FOR PPR PIPING SYSTEM



## PPR ball valve (PPSU ball) for hot water use with MT + MT ends - long handle

Product code	Inside diameter D, mm x R, inch	Quantity per carton, pcs
PPRF/BV-HW-2/PPR(X)-1/2" MMT	1/2"	50
PPRF/BV-HW-2/PPR(X)-3/4" MMT	3/4"	40



## PPR ball valve (PPSU ball) for hot water use with MT + MT ends - butterfly handle

Product code	Inside diameter D, mm x R, inch	Quantity per carton, pcs
PPRF/BV-HW-2B/PPR(X)-1/2" MMT	1/2"	75
PPRF/BV-HW-2B/PPR(X)-3/4" MMT	3/4"	60



## PPR ball valve (ABS ball) for cold water use with MT + MT ends - long handle

Product code	Inside diameter D, mm x R, inch	Quantity per carton, pcs
PPRF/BV-CW/PPR(X)-1/2" MMT	1/2"	50
PPRF/BV-CW/PPR(X)-3/4" MMT	3/4"	40



## PPR ball valve (ABS ball) for cold water use with MT + MT ends - butterfly handle

Product code	Inside diameter D, mm x R, inch	Quantity per carton, pcs
PPRF/BV-CW-B/PPR(X)-1/2" MMT	1/2"	75
PPRF/BV-CW-B/PPR(X)-3/4" MMT	3/4"	60



## PPR ball valve (brass alloy ball) for hot water use with FT + PPR ends - long handle

Product code	Inside diameter D, mm x R, inch	Quantity per carton, pcs
PPRF/BV-HW-1/PPR(X)- 20 x 1/2" FT	20 x 1/2"	50
PPRF/BV-HW-1/PPR(X)- 25 x 3/4" FT	25 x 3/4"	40

The product produced according to the international Standard ISO: EN ISO15874:2013  
German Standard: DIN 8077:2008; 8078:2008.

# BLUE OCEAN VALVES FOR PPR PIPING SYSTEM



## PPR ball valve (brass alloy ball) for hot water use with FT + PPR ends - butterfly handle

Product code	Inside diameter D, mm x R, inch	Quantity per carton, pcs
PPRF/BV-HW-1B/PPR(X)- 20 x 1/2" FT	20 x 1/2"	75
PPRF/BV-HW-1B/PPR(X)- 25 x 3/4" FT	25 x 3/4"	60



## PPR ball valve (PPSU ball) for hot water use with FT + PPR ends - long handle

Product code	Inside diameter D, mm x R, inch	Quantity per carton, pcs
PPRF/BV-HW-2/PPR(X)- 20 x 1/2" FT	20 x 1/2"	50
PPRF/BV-HW-2/PPR(X)- 25 x 3/4" FT	25 x 3/4"	40



## PPR ball valve (PPSU ball) for hot water use with FT + PPR ends - butterfly handle

Product code	Inside diameter D, mm x R, inch	Quantity per carton, pcs
PPRF/BV-HW-2B/PPR(X)- 20 x 1/2" FT	20 x 1/2"	75
PPRF/BV-HW-2B/PPR(X)- 25 x 3/4" FT	25 x 3/4"	60



## PPR ball valve (ABS ball) for cold water use with FT + PPR ends - long handle

Product code	Inside diameter D, mm x R, inch	Quantity per carton, pcs
PPRF/BV-CW/PPR(X)- 20 x 1/2" FT	20 x 1/2"	50
PPRF/BV-CW/PPR(X)- 25 x 3/4" FT	25 x 3/4"	40



## PPR ball valve (ABS ball) for cold water use with FT + PPR ends - butterfly handle

Product code	Inside diameter D, mm x R, inch	Quantity per carton, pcs
PPRF/BV-CW-B/PPR(X)- 20 x 1/2" FT	20 x 1/2"	75
PPRF/BV-CW-B/PPR(X)- 25 x 3/4" FT	25 x 3/4"	60



UNLIMITED  
INNOVATIONS

The product produced according to the international Standard ISO: EN ISO15874:2013  
German Standard: DIN 8077:2008; 8078:2008.



# BLUE OCEAN VALVES FOR PPR PIPING SYSTEM



## PPR ball valve (brass alloy ball) for hot water use with MT + PPR ends - long handle

Product code	Inside diameter D, mm x R, inch	Quantity per carton, pcs
PPRF/BV-HW-1/PPR(X)- 20 x 1/2" MT	20 x 1/2"	50
PPRF/BV-HW-1/PPR(X)- 25 x 3/4" MT	25 x 3/4"	40



## PPR ball valve (brass alloy ball) for hot water use with MT + PPR ends - butterfly handle

Product code	Inside diameter D, mm x R, inch	Quantity per carton, pcs
PPRF/BV-HW-1B/PPR(X)- 20 x 1/2" MT	20 x 1/2"	75
PPRF/BV-HW-1B/PPR(X)- 25 x 3/4" MT	25 x 3/4"	60



## PPR ball valve (PPSU ball) for hot water use with MT + PPR ends - long handle

Product code	Inside diameter D, mm x R, inch	Quantity per carton, pcs
PPRF/BV-HW-2/PPR(X)- 20 x 1/2" MT	20 x 1/2"	50
PPRF/BV-HW-2/PPR(X)- 25 x 3/4" MT	25 x 3/4"	40



## PPR ball valve (PPSU ball) for hot water use with MT + PPR ends - butterfly handle

Product code	Inside diameter D, mm x R, inch	Quantity per carton, pcs
PPRF/BV-HW-2B/PPR(X)- 20 x 1/2" MT	20 x 1/2"	75
PPRF/BV-HW-2B/PPR(X)- 25 x 3/4" MT	25 x 3/4"	60



## PPR ball valve (ABS ball) for cold water use with MT + PPR ends - long handle

Product code	Inside diameter D, mm x R, inch	Quantity per carton, pcs
PPRF/BV-CW/PPR(X)- 20 x 1/2" MT	20 x 1/2"	50
PPRF/BV-CW/PPR(X)- 25 x 3/4" MT	25 x 3/4"	40

The product produced according to the international Standard ISO: EN ISO15874:2013  
German Standard: DIN 8077:2008; 8078:2008.

# BLUE OCEAN VALVES FOR PPR PIPING SYSTEM



## PPR ball valve (ABS ball) for cold water use with MT + PPR ends - butterfly handle

Product code	Inside diameter D, mm x R, inch	Quantity per carton, pcs
PPRF/BV-CW-B/PPR(X)- 20 x 1/2" MT	20 x 1/2"	75
PPRF/BV-CW-B/PPR(X)- 25 x 3/4" MT	25 x 3/4"	60

## BLUE OCEAN PPR filters and back flow valve for PPR piping systems



### PPR inclined filter

Product code	Inside diameter D, mm x R, inch	Quantity per carton, pcs
PPRF/IF(X)-20	20	120
PPRF/IF(X)-25	25	60
PPRF/IF(X)-32	32	48

Notice: Brass alloy insert is natural yellow colour



### PPR inclined back flow valve

Product code	Inside diameter D, mm x R, inch	Quantity per carton, pcs
PPRF/IBF(X)-20	20	120
PPRF/IBF(X)-25	25	60
PPRF/IBF(X)-32	32	48

Notice: Brass alloy insert is natural yellow colour



### PPR draining branch with nipple M/F

Product code	Inside diameter D, mm x R, inch	Quantity per carton, pcs
PPRF/DBMF(X)-20	20	150
PPRF/DBMF(X)-25	25	120
PPRF/DBMF(X)-32	32	90
PPRF/DBMF(X)-40	40	60
PPRF/DBMF(X)-50	50	45
PPRF/DBMF(X)-63	63	24

Notice: Brass alloy insert is natural yellow colour



UNLIMITED  
INNOVATIONS

The product produced according to the international Standard ISO: EN ISO15874:2013  
German Standard: DIN 8077:2008; 8078:2008.





BLUE OCEAN socket welders and welding machines for socket fusion



Socket welders for PPR piping systems with fixed temperature

Product code	Welded pipe outside diameter, D, mm	Quantity per carton, complete
PPRWU/20 - 32	20 - 32	4
PPRWU/20 - 63	20 - 63	2
PPRWU/75 - 110	75 - 110	2



Socket welders for PPR piping systems with digital display on side

Product code	Welded pipe outside diameter, D, mm	Quantity per carton, complete
PPRWU/20 - 32/D	20 - 32	4
PPRWU/20 - 63/D	20 - 63	2
PPRWU/75 - 110/D	75 - 110	2



Socket welders for PPR piping systems with digital display on top

Product code	Welded pipe outside diameter, D, mm	Quantity per carton, complete
PPRWU/20 - 63/DT	20 - 63	2
PPRWU/75 - 110/DT	75 - 110	2

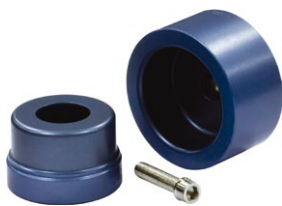


Socket welding machine for big diameter piping systems with digital display

Product code	Welded pipe outside diameter, D, mm	Quantity per carton, complete
PPRWM/20 - 90/D	20 - 90	1
PPRWM/32 - 110/D	32 - 110	1
PPRWM/50 - 160/D	50 - 160	1

The product produced according to the international Standard ISO: EN ISO15874:2013  
German Standard: DIN 8077:2008; 8078:2008.

## BLUE OCEAN heating tools for socket fusion of PPR piping systems



### Heating tools for socket fusion of PPR piping product

Product code	Pipe outside diameter, D, mm	Quantity per carton, complete	Product code	Pipe outside diameter, D, mm	Quantity per carton, complete
PPRT/HT-16	16	180	PPRT/HT-75	75	20
PPRT/HT-20	20	150	PPRT/HT-90	90	16
PPRT/HT-25	25	150	PPRT/HT-110	110	12
PPRT/HT-32	32	120	PPRT/HT-125	125	10
PPRT/HT-40	40	50	PPRT/HT-140	140	8
PPRT/HT-50	50	50	PPRT/HT-160	160	6
PPRT/HT-63	63	30			



### Heating tools for weld-in saddle socket fusion of PPR piping product

Product code	Main pipe outside diameter, D, mm	Weld-in saddle fitting diameter, d, mm	Quantity per carton, complete
PPRT/WIS-40/20-25	40	20-25	90
PPRT/WIS-50/20-25	50	20-25	90
PPRT/WIS-63/20-25	63	20-25	90
PPRT/WIS-63/32	63	32	50
PPRT/WIS-75/20-25	75	20-25	90
PPRT/WIS-75/32	75	32	50
PPRT/WIS-75/40	75	40	30
PPRT/WIS-90/20-25	90	20-25	90
PPRT/WIS-90/32	90	32	50
PPRT/WIS-90/40	90	40	30
PPRT/WIS-110/20-25	110	20-25	90
PPRT/WIS-110/32	110	32	50
PPRT/WIS-110/40	110	40	30
PPRT/WIS-110/50	110	50	30
PPRT/WIS-110/63	110	63	15
PPRT/WIS-125/20-25	125	20-25	90
PPRT/WIS-125/32	125	32	50
PPRT/WIS-125/40	125	40	30
PPRT/WIS-125/50	125	50	30
PPRT/WIS-125/63	125	63	15



### Repairing heating tools for PPR repairing stick

Product code	Dimensions D, mm	Quantity per carton, complete	Product code	Dimensions D, mm	Quantity per carton, complete
PPRT/RHT-7	7	200	PPRT/RHT-11	11	200



# BLUE OCEAN cutters, tools and accessories for PPR piping systems

## BLUE OCEAN cutters for PPR piping systems



### Pipe cutters for PPR, polymer composite and polymer -aluminum composite pipes

Product code	Pipe outside diameters D, mm	Quantity per carton, complete
BO/CU - 001A	16 - 32	40



### Pipe cutters for PPR, polymer composite and polymer -aluminum composite pipes

Product code	Pipe outside diameters D, mm	Quantity per carton, complete
BO/CU - 002A	16 - 40	40



### Pipe cutters for PPR, polymer composite and polymer -aluminum composite pipes

Product code	Pipe outside diameters D, mm	Quantity per carton, complete
BO/CU - 003A	16 - 40	40



### Pipe cutters for PPR, polymer composite and polymer -aluminum composite pipes

Product code	Pipe outside diameters D, mm	Quantity per carton, complete
BO/CU - 004A	16 - 40	40



### Pipe cutters for PPR, polymer composite and polymer -aluminum composite pipes

Product code	Pipe outside diameters D, mm	Quantity per carton, complete
BO/CU - 006M	16 - 25	50



### Pipe cutters for PPR, polymer composite and polymer -aluminum composite pipes

Product code	Pipe outside diameters D, mm	Quantity per carton, complete
BO/CU - 063M	20 - 63	12



### Pipe cutters for PPR, polymer composite and polymer -aluminum composite pipes

Product code	Pipe outside diameters D, mm	Quantity per carton, complete
BO/CU - 075A	20 - 75	8

The product produced according to the international Standard ISO: EN ISO15874:2013 German Standard: DIN 8077:2008; 8078:2008.

# BLUE OCEAN cutters, tools and accessories for PPR piping system



## Pipe cutters for PPR, polymer composite and polymer -aluminum composite pipes

Product code	Pipe outside diameters D, mm	Quantity per carton, complete
BO/CU - 75-110	75 - 110	5



## Pipe cutters for PPR, polymer composite and polymer -aluminum composite pipes

Product code	Pipe outside diameters D, mm	Quantity per carton, complete
BO/CU - 110-160	110 - 160	4

## BLUE OCEAN tools for PPR piping systems



### Drill head for weld-in saddles

Product code	Weld-in saddle fitting diameters, D, mm	Quantity per carton, complete
PPRT/SDH - 20/25	20/25	80
PPRT/SDH - 32	32	50
PPRT/SDH - 40	40	40
PPRT/SDH - 50	50	30
PPRT/SDH - 63	63	20



### Manual peeling tool for BO-STABI pipes

Product code	Outside diameter of inner PPR pipe, D, mm	Quantity per carton, complete
PPRT/MPT-20/25	20/25	40
PPRT/MPT-32/40	32/40	30
PPRT/MPT-50/63	50/63	20



### Peeling head of electrical tool for BO-STABI pipes

Product code	Outside diameter of inner PPR pipe, D, mm	Quantity per carton, complete
PPRT/PH-ET-20	20	70
PPRT/PH-ET-25	25	60
PPRT/PH-ET-32	32	50
PPRT/PH-ET-40	40	30
PPRT/PH-ET-50	50	20
PPRT/PH-ET-63	63	15



UNLIMITED  
INNOVATIONS

The product produced according to the international Standard ISO: EN ISO15874:2013  
German Standard: DIN 8077:2008; 8078:2008.



# BLUE OCEAN cutters, tools and accessories for PPR piping system

## BLUE OCEAN metal clamps with EPDM protector for BLUE OCEAN piping systems



### Metal clamp Type 01 with EPDM protector and threaded screw wood pitch

Product code	Pipe outside diameter, D, mm / Threaded screw diameter x length, mm	Quantity per carton, complete
PPRT/MSHTS-20/8x80	20/8x80	400
PPRT/MSHTS-25/8x80	25/8x80	300
PPRT/MSHTS-32/8x80	32/8x80	300
PPRT/MSHTS-40/8x80	40/8x80	200
PPRT/MSHTS-50/8x80	50/8x80	200
PPRT/MSHTS-63/8x80	63/8x80	150
PPRT/MSHTS-75/8x80	75/8x80	120
PPRT/MSHTS-90/10x110	90/10x110	80
PPRT/MSHTS-110/10x110	110/10x110	60
PPRT/MSHTS-125/10x110	125/10x110	50
PPRT/MSHTS-140/10x110	140/10x110	40
PPRT/MSHTS-160/10x110	160/10x110	40



### Metal clamp Type 02 with EPDM protector and threaded screw wood pitch

Product code	Pipe outside diameter, D, mm / Threaded screw diameter x length, mm	Quantity per carton, complete
PPRT/MSLTS-20/6x70	20/6x70	800
PPRT/MSLTS-25/6x70	25/6x70	600
PPRT/MSLTS-32/6x70	32/6x70	500
PPRT/MSLTS-20/8x80	20/8x80	400
PPRT/MSLTS-25/8x80	25/8x80	300
PPRT/MSLTS-32/8x80	32/8x80	300
PPRT/MSLTS-40/8x80	40/8x80	250
PPRT/MSLTS-50/8x80	50/8x80	200
PPRT/MSLTS-63/8x80	63/8x80	200
PPRT/MSLTS-75/8x80	75/8x80	150
PPRT/MSLTS-90/10x110	90/10x110	120
PPRT/MSLTS-110/10x110	110/10x110	80
PPRT/MSLTS-125/10x110	125/10x110	80
PPRT/MSLTS-140/10x110	140/10x110	80
PPRT/MSLTS-160/10x110	160/10x110	60

The product produced according to the international Standard ISO: EN ISO15874:2013  
German Standard: DIN 8077:2008; 8078:2008.

# BLUE OCEAN cutters, tools and accessories for PPR piping system



## Metal clamp Type 03 with EPDM protector, side adjustable screw and threaded screw wood pitch

Product code	Pipe outside diameter, D, mm / Threaded screw diameter x length, mm	Quantity per carton, complete
PPRT/FMPC-SL-20/8-10x80	20/8-10x80	300
PPRT/FMPC-SL-25/8-10x80	25/8-10x80	200
PPRT/FMPC-SL-32/8-10x80	32/8-10x80	150
PPRT/FMPC-SL-40/8-10x80	40/8-10x80	150
PPRT/FMPC-SL-50/8-10x80	50/8-10x80	100
PPRT/FMPC-SL-63/8-10x80	63/8-10x80	80



## Double metal clamp with EPDM protector and threaded screw wood pitch

Product code	Pipe outside diameter, D, mm / Threaded screw diameter x length, mm	Quantity per carton, complete
PPRT/DMPC-20x2/8x80	20x2/8x80	200
PPRT/DMPC-25x2/8x80	25x2/8x80	200
PPRT/DMPC-32x2/8x80	32x2/8x80	150

## P.T.F.E. thread seal hermetic tape for Blue Ocean PPR piping systems



### P.T.F.E. thread seal hermetic tape

Product code	Width, mm x thickness, mm x length, meters	Quantity per carton, complete
BO/TSHT/004/12x0.075x10 - white	12x0.075x10	400
BO/TSHT/016/19x0.075x10 - white	19x0.075x10	320
BO/TSHT/023/25x0.075x10 - white	25x0.075x10	240
BO/TSHT/008/12x0.10x10 - white	12x0.10x10	400
BO/TSHT/018/19x0.10x10 - white	19x0.10x10	320
BO/TSHT/026/25x0.10x10 - white	25x0.10x10	240
BO/TSHT/022/19x0.20x15/professional, white	19x0.20x15	118
BO/TSHT/060/12x0.10x10/yellow for gas pipes	12x0.10x10	400



### Measuring Tape for BLUE OCEAN PPR piping systems

Product code	Measuring length, meters	Quantity per carton, complete
BO/AA / MT - 01/ 5M	5 meters	60



UNLIMITED  
INNOVATIONS

The product produced according to the international Standard ISO: EN ISO15874:2013  
German Standard: DIN 8077:2008; 8078:2008.

Blue Ocean Industrial Development (UK) Group Limited

20 years of experience





UNLIMITED  
INNOVATIONS

## BLUE OCEAN INDUSTRIAL DEVELOPMENT (UK) GROUP LIMITED

2 City Limits, Danehill, Lower Earley, Reading, Berkshire, RG6 4UP, United Kingdom

[www.blueoceangroup.org](http://www.blueoceangroup.org)

[customer-service@blueoceangroup.org](mailto:customer-service@blueoceangroup.org) [info@blueoceangroup.org](mailto:info@blueoceangroup.org)

