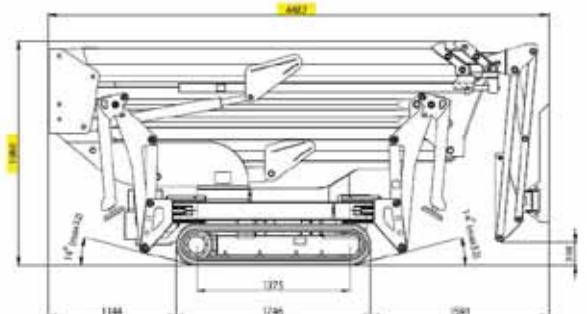
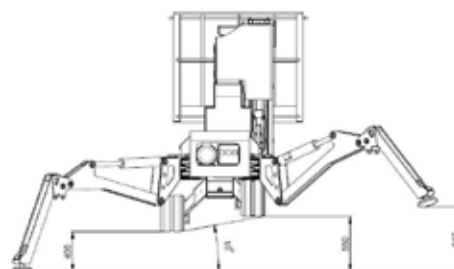
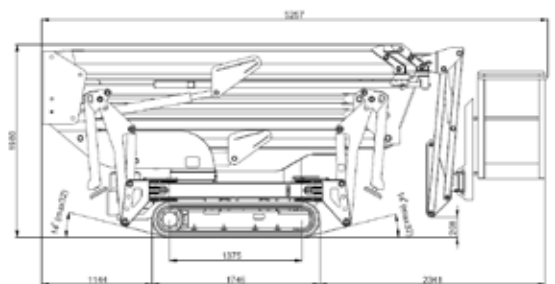
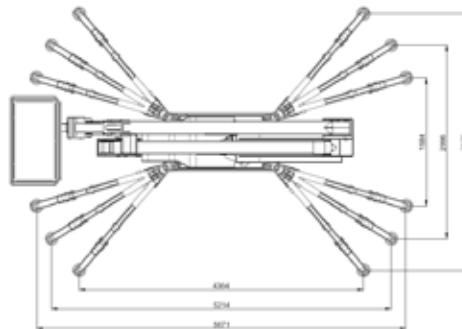
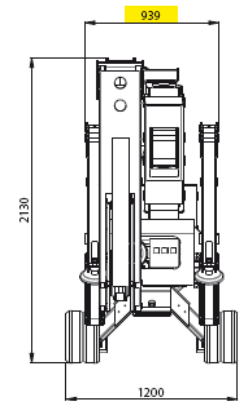
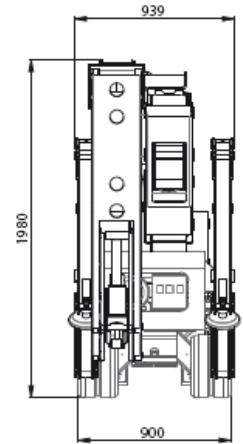
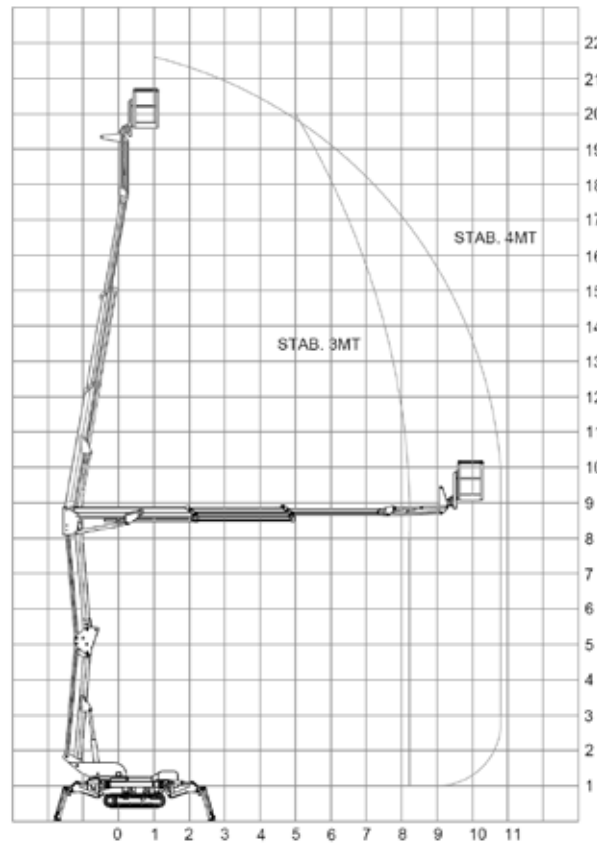


BLUELIFT C22/11

Reach diagram



TCA LIFT A/S

Tolderlundsvej 106
 DK-5000 Odense C
 Phone: +45 66 13 11 00
 www.tcalift.com

All measurements are intended as guide. Choice of equipment may change the mentioned measurements

Bluelift C22/11

Working height	22m
Max. reach	10,8m
Max. load in basket	200kg
Turret rotation	>340°
Maximum gradient	28%

Dimensions:

Length	4482 / 5257mm
Height	1980mm
Width	900 / 1200mm
Weight	3000kg
Outrigger cross section	Variable (see drawing page 1)

Standard equipment

Options

Basket rotation +/-90°	Non marking tracks
Auto setting	Water / air outlet in basket
Adjustable track width (hydraulic)	Lombardini / Hatz diesel engine
Radio control	
Hydraulic outriggers	
220V electric pump	
Honda iGX440 15hp engine	
Auto start / stop (engine)	
220V outlet in basket	



As all our products are in a constant process of development we reserve the right to alterations