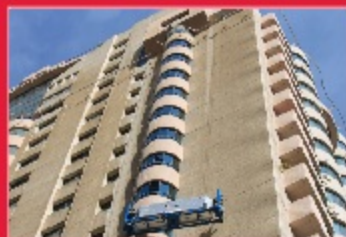


# OSLER<sup>®</sup>

MEMBER OF ORIENTALS GROUP

## BMU CATALOGUE

HOTLINE: +971 600 532228



### Contact Us:

OSLER Moving Scaffolding LLC,  
P.O. Box 238787 - Dubai, United Arab Emirates,  
Hotline: +971 600 532227 / Tel: +971 4 8858810  
Fax: +971 4 8858830  
Email: [info@orientals.ae](mailto:info@orientals.ae)

OSLER<sup>®</sup>





Since establishing, Orientals Group is growing to become one of the best region providers of the most comprehensive products in the industry segments we serve. From excellence in manufacturing to responsive customer service, we are driven each day to provide un-paralled value for every product and every customer, achieving and maintaining a prominent position in the industrial fields, in which we have a presence and firmly entrench Orientals Group as a leader and an innovator.

#### ORIENTAL GROUP

- Orientals Specialist Lifting- Dubai, UAE
- Orientals for Scaffolding & Lifting Equipments Rental - Dubai, UAE
- Orientals Cranes & Spare Parts - UAE
- Orientals Mobile Lifting- Jordan
- DAR Orientals - Riyadh, KSA

OSLER is a line of hoist products, developed by Orientals and manufactured in China & the UAE. Its cost-effective compared to other equivalent brands. Currently, it is widely used by the leading companies in the region. The high quality and the operational efficiency of OSLER products as well as the maintenance, service programs supported by Orientals experienced maintenance personnel and the permanent availability of the spare parts allowed us to become one of the biggest suppliers in the region. OSLER is known as the Product of Choice.

[www.osler.ae](http://www.osler.ae)

OSLER technology products are used widely in external wall finishing and maintenance. For that purpose a wide range of products were created and manufactured to serve that purpose starting with suspended platforms (cradle), hoists, special designs using new technologies to reach any where on external or internal walls & Fasteners.



# OSLER<sup>®</sup> BMU RANGE

## Technical Specification

<b>Model</b>	FBA 1
<b>Safe working Load</b>	200 - 250 Kg
<b>Hoisting height</b>	0 - 300 M
<b>Wheel Base</b>	600 - 3000 mm
<b>Outreach max</b>	20 M
<b>Cradle Weight</b>	200 Kg
<b>Cradle</b>	
Length: 2 - 3 M	
Width: 600 mm	
Height: 1000 / 1200 mm	
<b>Hoisting</b>	OSLER 7
<b>Traversing:</b>	Double Rail

## Single Jib Machine





Single Jib Machine

Single Jib DW 10 BMU

Standing on top of Al Muftah's second tower, Al Muftah Office building was equipped with a German make Building Maintenance Unit – Wahlefeld composing of a simple but very efficient Window Cleaning System.



Single Jib A 60 BMU

Another Wahlefeld machine.



Technical Specification

Model: DW 10

Working Height: 60 M

Cradle Size  
2350X1100x700 mm

Safe Working Load: 240 Kg

Jib: 6.50 M

Hoisting: OSLER hoist

Track Gauge: 2000 mm

Machine Weight: 6 Tons.

Traversing: Guide Rail /  
Concrete / Double Rail

Technical Specification

Model: A 60

Working Height: 95 M

Cradle Size: 2X1.1x0.7 M

Safe Working Load: 240 Kg

Jib: 4.65 M

Hoisting: Powered Cradle

Track Gauge: 1500 mm

Machine Weight: 4.5 Tons.

Traversing: Guide Rail /  
Concrete / Double Rail

Telescopic Jib Machine



Technical Specification

Model  
FBA S

Safe working Load  
200 - 250 Kg

Hoisting height  
0 - 300 M

Wheel Base  
600 - 3000 mm

Outreach max  
30 M

Cradle  
Length: 2 - 3 M  
Width: 600 mm  
Height: 1000 / 1200 mm\

Traversing: Double Rail

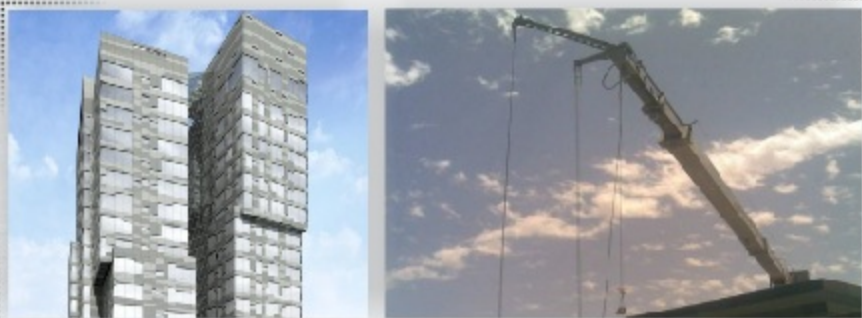




## Telescopic Jib Machine

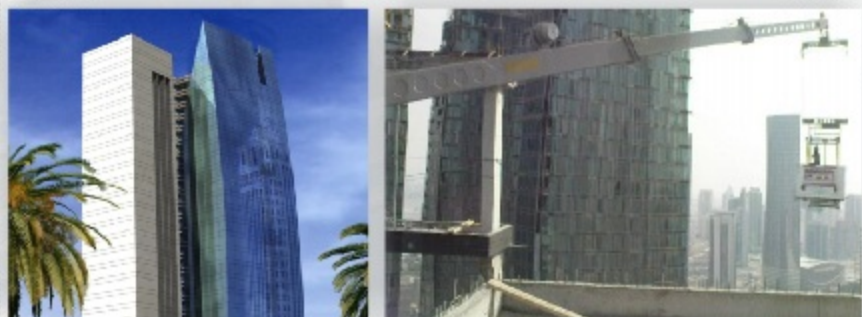
### Multi Jib JA735B BMU

A Residential Building that primarily demands for the toughest Building Maintenance Unit. With its limited roof deck available for a machine plus the aesthetic requirement for concealing the machine behind the walls, the unit comes with an overwhelming telescopic jib reaching up to 31meter length and can go down for parking with a minimum retracted length of 15 meter. It also comes with a pantographic type cradle that can adjust to reach recessed areas along the façade elevation.



### Multi Jib JA745S-AC3 BMU

The jib can extend from 14.5 meter up to 28.5 meter with a column that can lift to adjust the machine by another 4 meter plus its luffing action and pantographic cradle it can easily maneuver throughout the complex design of the building.



### Technical Specification

Model: JA735B

Working Height: 80 M

Cradle Size  
1800X1100x650 mm

Safe Working Load: 140 Kg

Jib: 31 M

Hoisting: OSLER type

Track Gauge: 3500 mm

Machine Weight: 38 Tons

Traversing: Double Rail

### Technical Specification

Model: JA745S-AC3

Working Height: 128 M

Cradle Size: 2X1.1x0.6 M

Safe Working Load: 250 Kg

Jib: 28.50 M

Hoisting: OSLER type

Track Gauge: 1800 mm

Luffing angle: 50°

Traversing: Double Rail

### Technical Specification

Model  
FBA 2

Safe working Load  
200 - 250 Kg

Hoisting height  
0 - 300 M

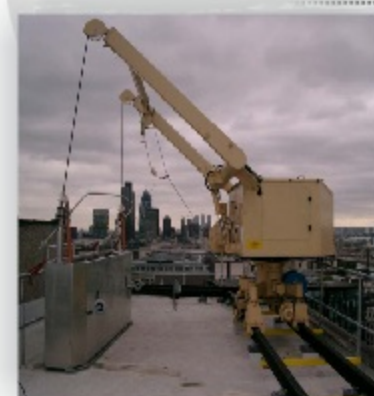
Wheel Base  
600 - 3000 mm

Outreach max  
8000 mm

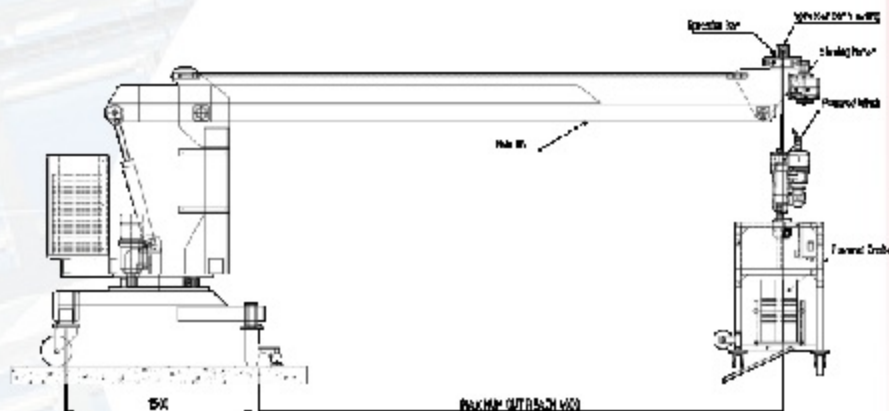
Cradle  
Length: 2 -3 M  
Width: 600 mm  
Height: 1000 / 1200 mm

Traversing:  
Double Rail / Guide rail

## Synchronized double Jib Machine



## OSL Guide Rail Machine



### Technical Specification

**Model:** OSL Guide Rail

**Working Height: 0 - 200 M**

**Boom Length:**

2000 - 6000 mm

**Safety Load:** 200 - 500 Kg

**Basket Lift:**

Single Winding Drum /  
Double Wire Winder

**Basket Length: 2M**

**Operating System:** Electric

**Rotary Hoist:** Electric

**Boom:** Electric

Traversing: Guide Rail

### Technical Specification

Model: OSL Parapet

**Working Height: 0 - 150 M**

**Boom Length:**

1500 - 3000 mm

**Safety Load:** 200 - 400 Kg

**Basket Lift:** Elevator

**Basket Length: 2 - 3 M**

**Operating System:**

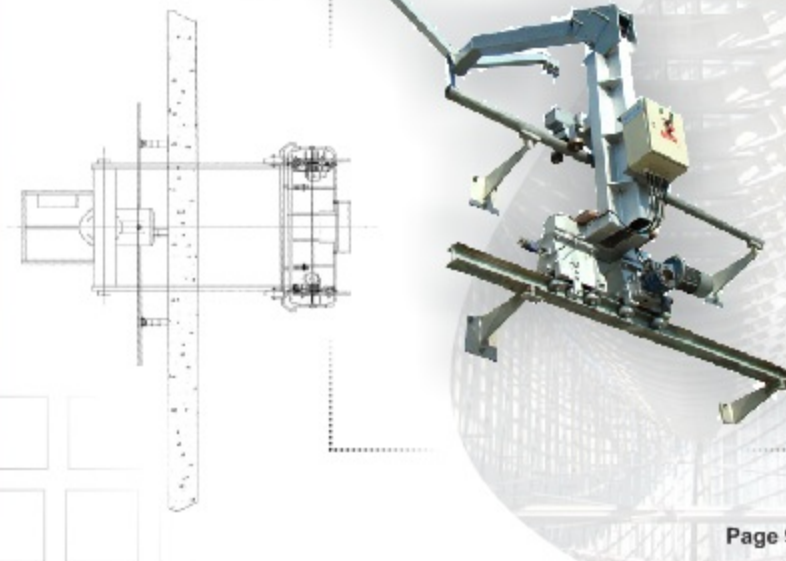
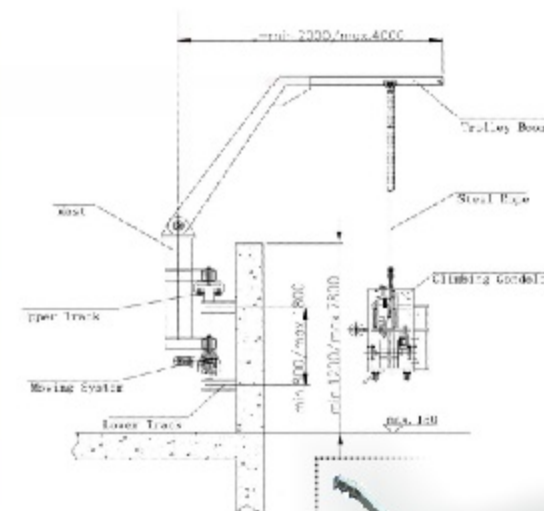
Electric / Manual

**Rotary Hoist:**

Electric / Manual

**Traversing:** Double Rail

### OSL Parapet Double Rail Machine





## Monorail

### CLIMBING MONORAIL

This tower was built in Dubai Marina, Dubai. Composing of 55 levels of Residential Units overlooking the Marina. Orientals supplied the climbing monorail and cradle that is used for cleaning and maintenance of the building top crown.



### OSLER Monorail & Basket on Special Davit structure.



### Technical Specification

#### Rail Type

FBA 137 Climbing monorail

#### Model

OSLER 7

#### Cradle Weight

200 Kg

#### Cradle Size

1000X1100x600 mm

#### Hoisting

Traction Hoist

### Technical Specification

Working Height: 0 - 150 M

Basket Length: 2 - 3 M

Safety Load: 200 - 400 Kg

### Technical Specification

#### Rail Type

Monorail & Basket on  
Special Davit structure

#### Model

OSLER 7

#### Cradle Weight

250 Kg

#### Cradle Size

2500X1100x700 mm

#### Hoisting

Traction Hoist

Basket Lift: Hoist

Main boom Rotation  
Manual

## Portable Davit

