



PROFILE SERIES

CASCADE

METAL PANEL SYSTEM



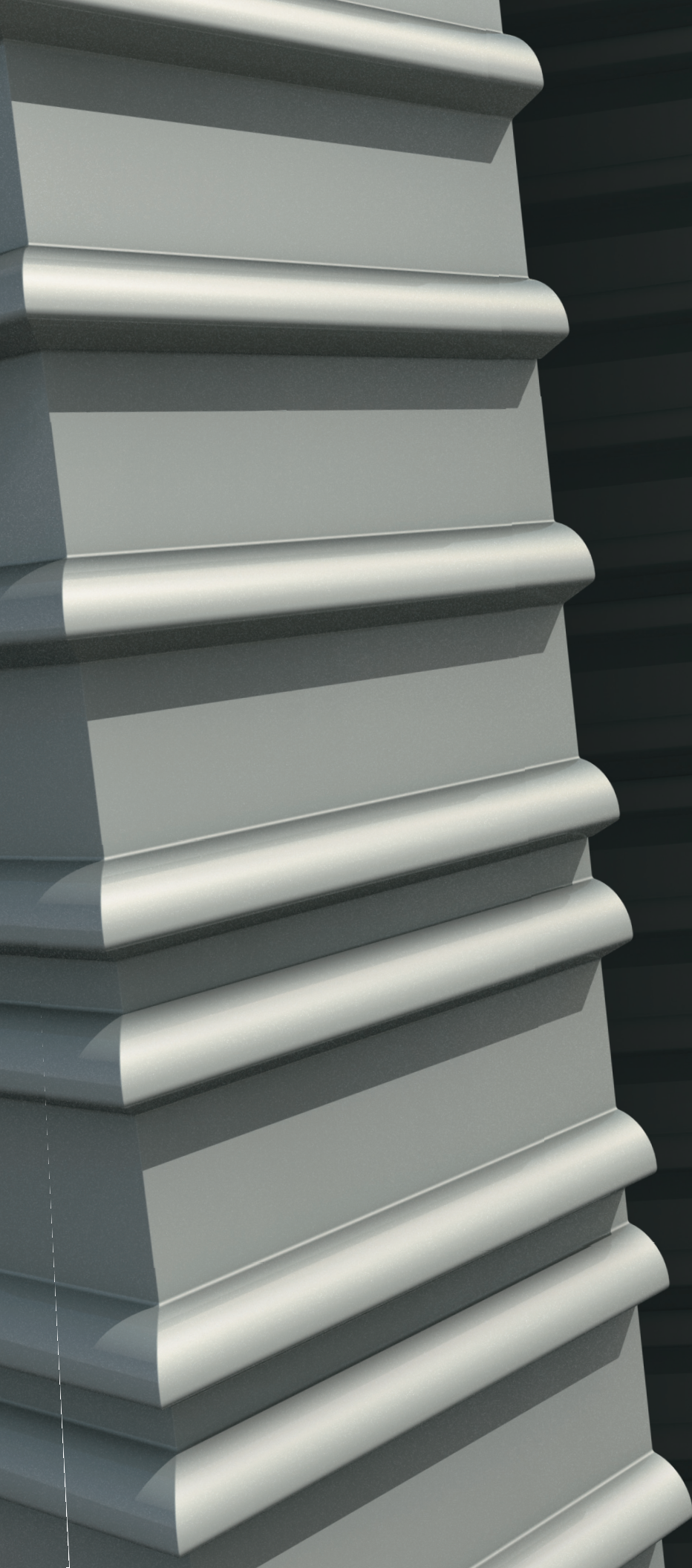
CENTRIA

INSPIRED BY NATURE

Nature set the standard. CENTRIA adapted it, and set a new standard in single-skin metal panels. The delicate play of light and shadow created as streams of water flow down the intricately textured and shaped rocks of a waterfall helped inspire CENTRIA's latest innovation: CASCADE interchangeable single-skin metal panels.

Marked by a striking signature curve combined with a bold, flat, slope rib profile, the CASCADE panel creates shadow relief that's never been seen before in a metal panel—and offers a whole new level of design options.





INTRODUCING CASCADE

CASCADE expands CENTRIA's successful Profile Series line of single-skin metal panels. Featuring concealed fasteners and a common-lock joint, every single one of the seven unique profile rib panels work with each other, as well as with CENTRIA's full line of Concept Series panels. Together, they provide virtually limitless design options that help you imagine and execute distinctive building exteriors.

Whether it's insulated or uninsulated field-assembled walls, new construction or a retrofit project, CASCADE is the solution for a successful project. All-weather installation capability shortens installation time and permits fast-track scheduling. Plus, the flexibility to insulate the panels means many levels of thermal protection are yours.

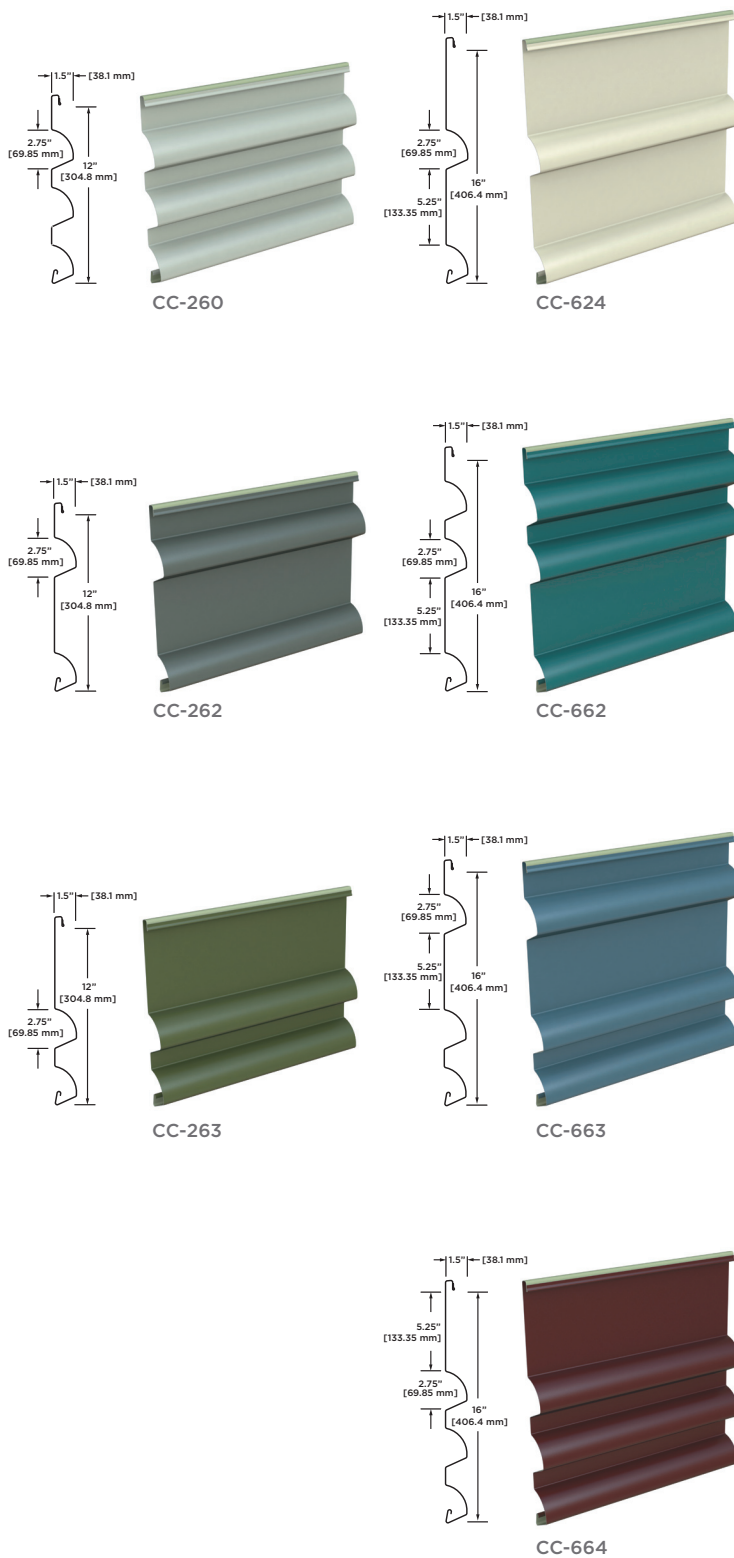
CASCADE'S FLEXIBILITY

With the ability to be installed both horizontally and vertically, as well as to be integrated with CENTRIA Concept Series panels, CASCADE offers unprecedented design flexibility. However, what truly makes CASCADE unique is the distinctive 1-1/2" deep rib consisting of a soft curve combined with an angular sloped web to provide deep shadow relief. This unique sculpted profile introduces interesting shadow accents to a façade design.

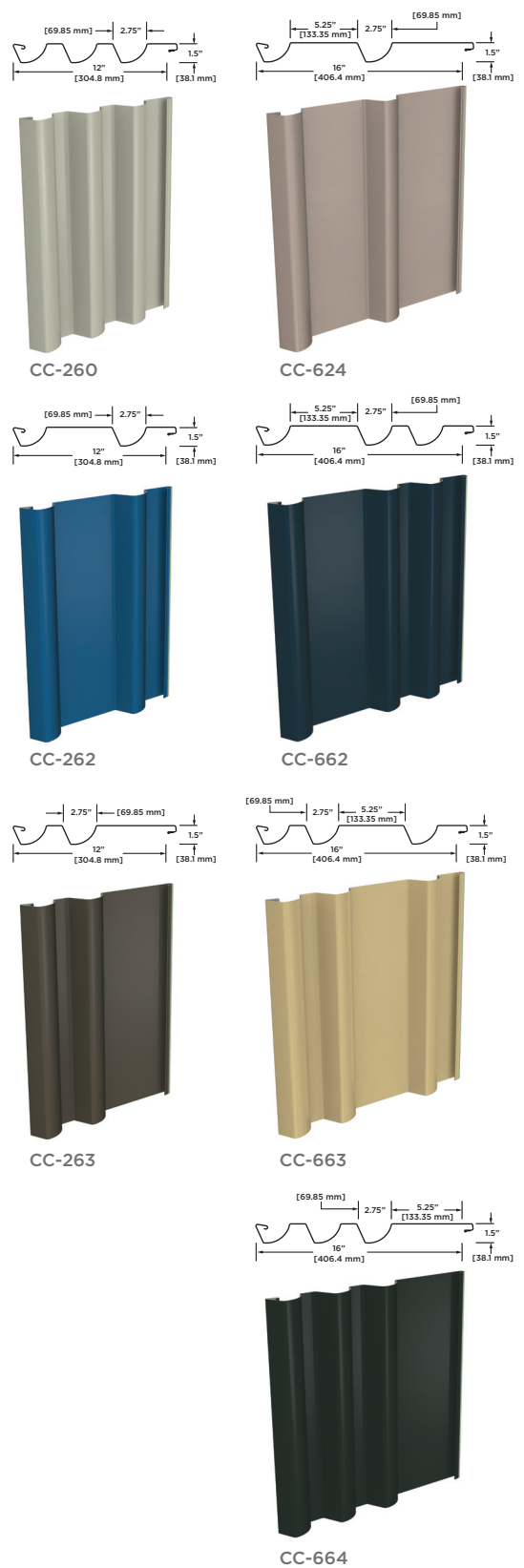
The common side joint makes it possible to mix the panels for custom aesthetics, while the concealed clips and fasteners offer a clean, unbroken appearance. Finish options are also extensive with a choice of stucco-embossed or smooth. And, for further design options, there is a CASCADE EcoScreen® perforated panel available in the CC-260 profile.

PROFILE SERIES CASCADE*

HORIZONTAL



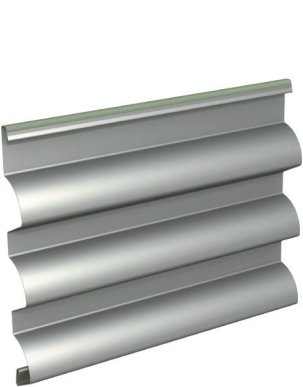
VERTICAL



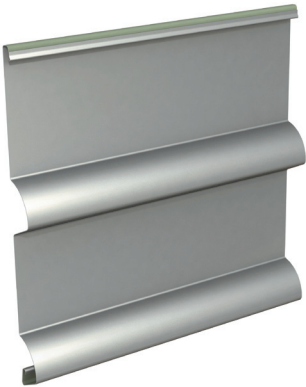
Patent Pending

*CASCADE applications require a backup with exterior sheathing and a weather-resistant air barrier.

Profile Combination Design Options



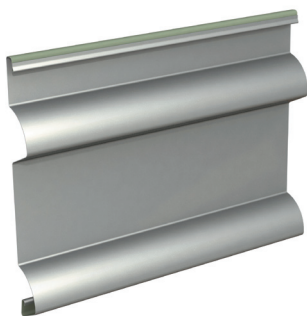
CC-260



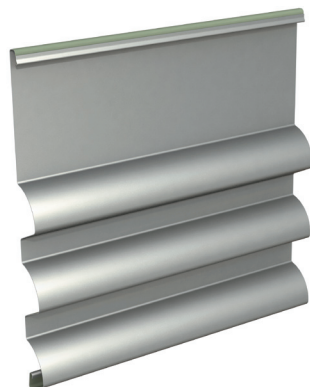
CC-624

Featured Profiles

12" wide horizontal CASCADE CC-260 panel on top, combined with the 16" wide horizontal CASCADE CC-624 on the bottom.



CC-262

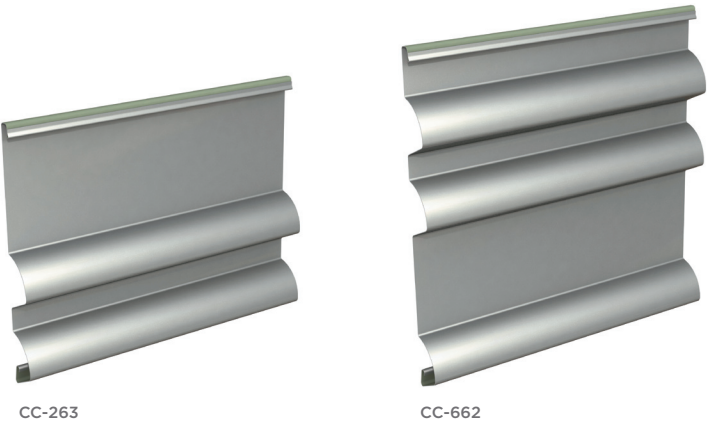


CC-664

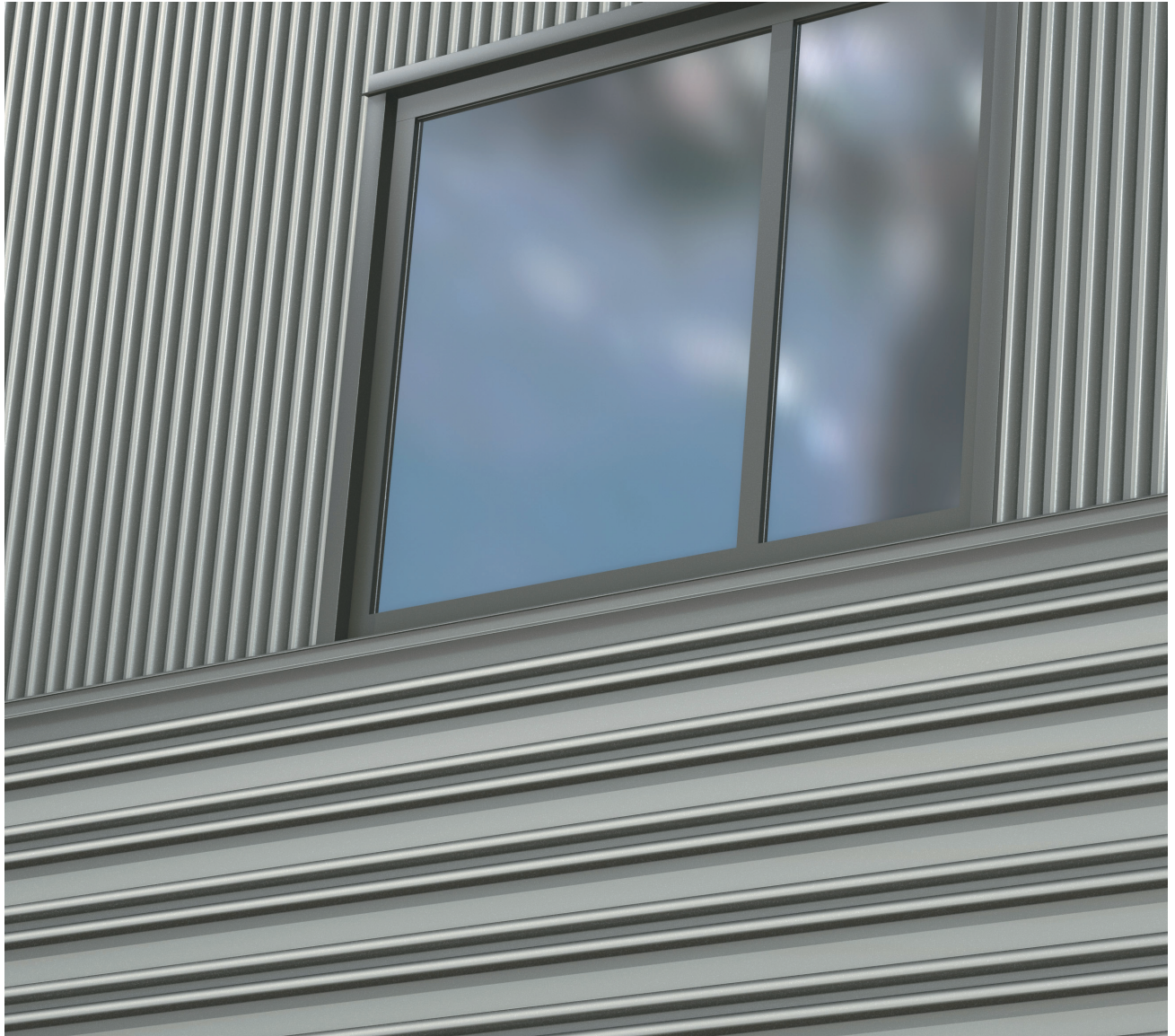
Featured Profiles

12" wide horizontal CASCADE
CC-262 panel on top, combined
with the 16" wide horizontal
CASCADE CC-664 on the bottom.

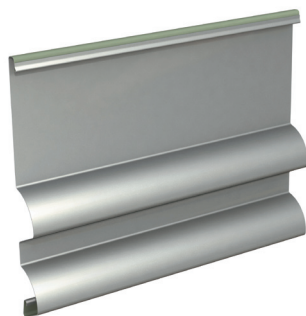
Profile Combination Design Options



Featured Profiles
12" wide horizontal CASCADE
CC-263 panel on top, combined
with the 16" wide horizontal
CASCADE CC-662 on the bottom.



CC-260

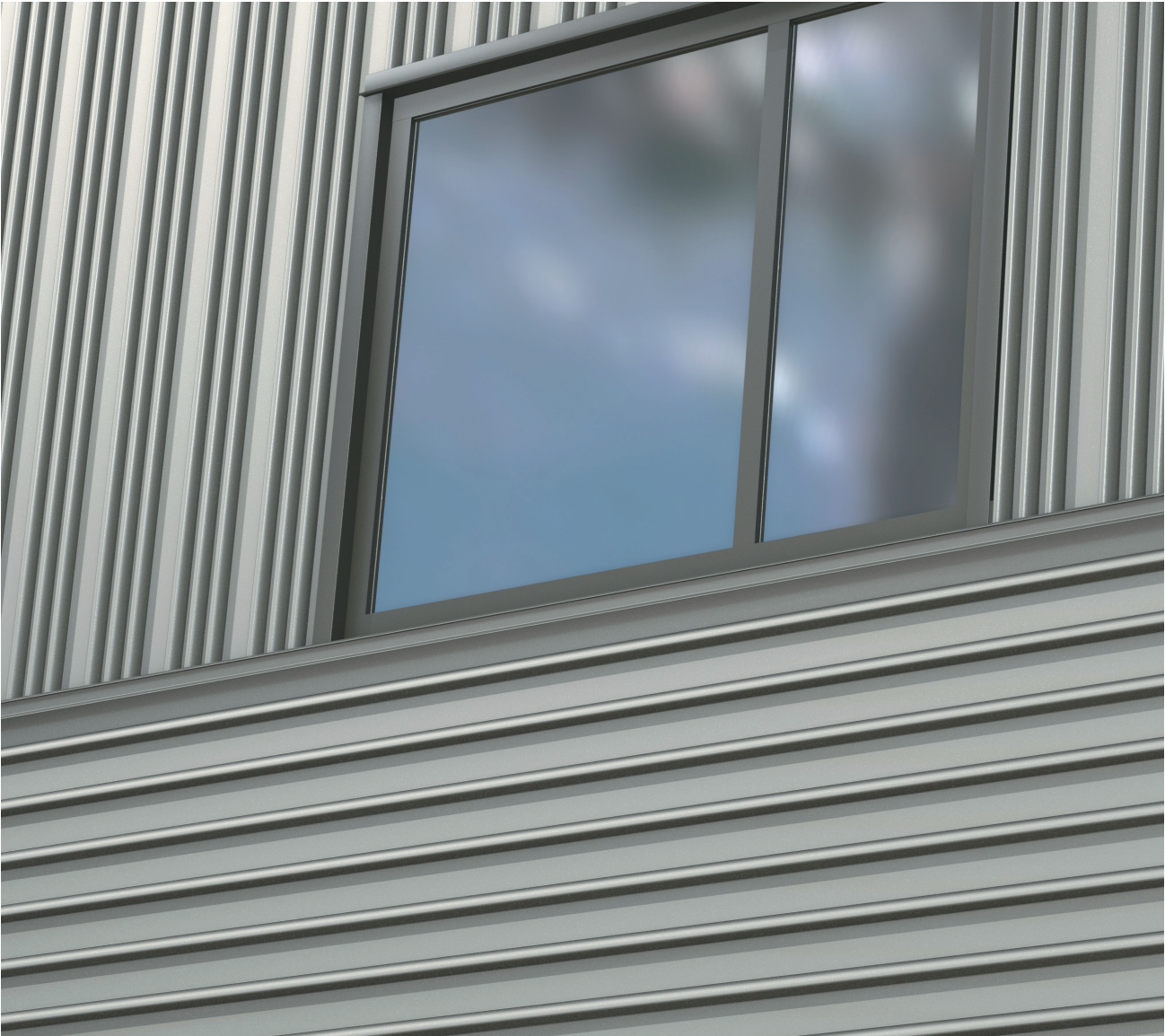


CC-263

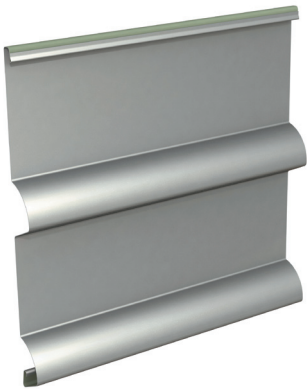
Featured Profiles

12" wide vertical CASCADE
CC-260 panel on top, combined
with the 12" wide horizontal
CASCADE CC-263 on the bottom.

Profile Combination Design Options



CC-664



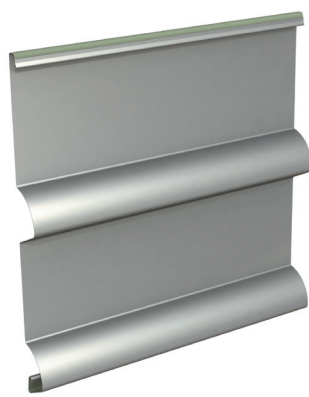
CC-624

Featured Profiles

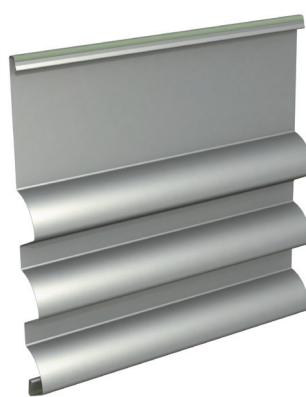
16" wide vertical CASCADE
CC-664 panel on top, combined
with the 16" wide horizontal
CASCADE CC-624 on the bottom.



CC-624



CC-624

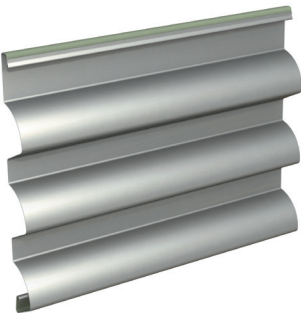


CC-664

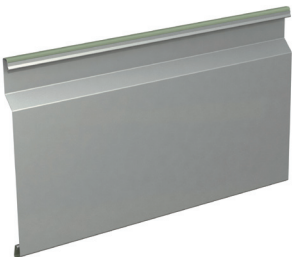
Featured Profiles

16" wide vertical CASCADE CC-624 panel on top, combined with the 16" wide horizontal CASCADE CC-624 and 16" wide horizontal CASCADE CC-664 on the bottom.

Profile Combination Design Options



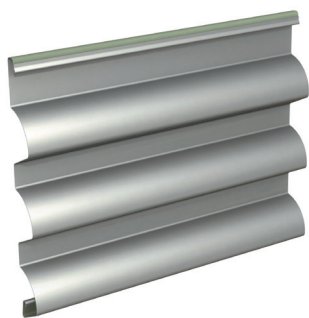
CC-260



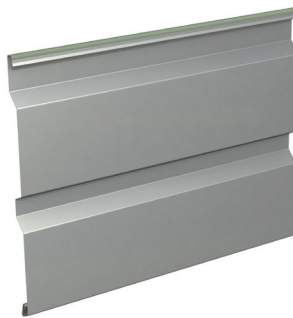
CS-200

Featured Profiles

12" wide horizontal CASCADE CC-260 panel alternating with the 12" wide horizontal Concept Series CS-200.



CC-260



CS-620

Featured Profiles

12" wide horizontal CASCADE CC-260 panel alternating with the 16" wide horizontal Concept Series CS-620.

Profile Combination Design Options



CC-262



CS-200

Featured Profiles

12" wide vertical CASCADE CC-262 panel alternating with the 12" wide vertical Concept Series CS-200.



CC-624



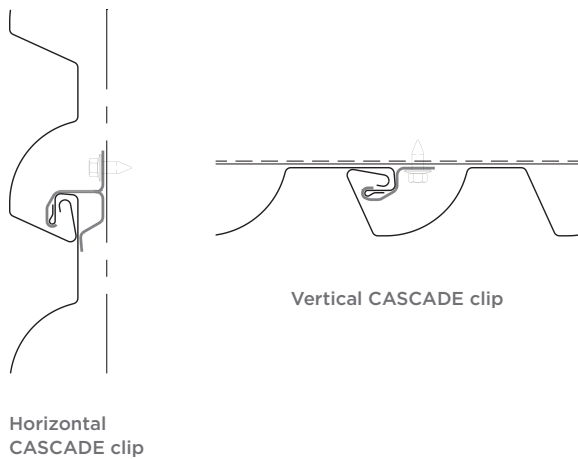
CS-260

Featured Profiles

16" wide vertical CASCADE CC-624 panel alternating with the 12" wide vertical Concept Series CS-260.

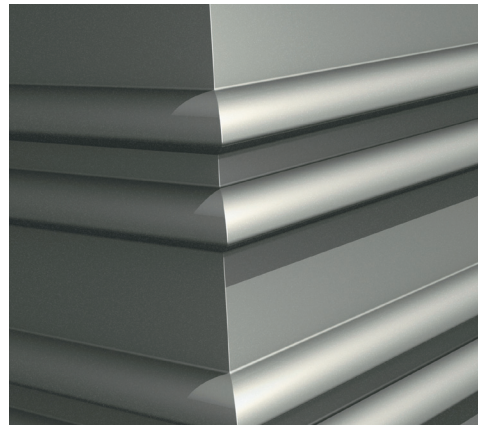
CASCADE Panel Joinery

CASCADE panels feature increased panel engagement for a tighter joint that's virtually invisible. A unique concealed fastening clip design allows unimpeded thermal movement and creates an air cavity without shims or subgirts between the reverse side of the panel and the weather resistive barrier—a critical feature for effective moisture control in rainscreen design.



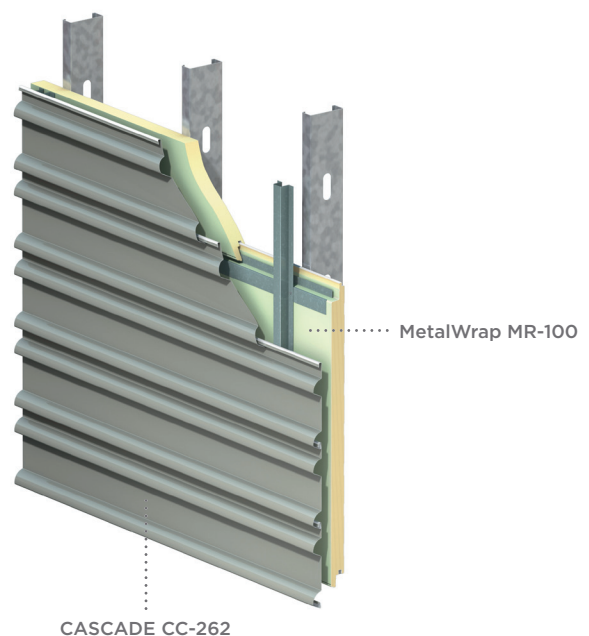
MicroSeam® Corners

MicroSeam Corners use cutting-edge structural bonding techniques that appear virtually seamless, extending the shape of the CASCADE panel all the way to the edge. Manufactured from the same metal substrate coil as the panels, MicroSeam Corners employ no welding and no pop rivets. And, like all other CENTRIA panels, they are fully tested for performance.



Rainscreens Reimagined

CASCADE works as an exceptional rainscreen panel option when installed over CENTRIA's MetalWrap™ Series insulated composite backup panels. MetalWrap Series is designed with CENTRIA's innovative Advanced Thermal and Moisture Protection (ATMP®) technology to provide superior thermal performance and minimize air and moisture penetration.



CASCADE Panel Profile Details

PRODUCT DESCRIPTION	AVAILABLE SUBSTRATES	AVAILABLE COATINGS
<ul style="list-style-type: none"> • Panel Modules—12" or 16" dependent on profile selection • Lengths up to 30' [9.14m] • Concealed clips and fasteners • Stand-off clips provide ventilation cavity and continuous drain plane behind panel • Horizontal or vertical wall installation • Common joint design permits multiple profile integration 	<ul style="list-style-type: none"> • Standard 24**–18 gage G-90 galvanized steel • Galvanized steel, Galvalume® steel, aluminum or stainless steel — optional • Smooth or embossed surface texture <p>**CC-260 only</p>	<p>Available in smooth finishes, featuring the following coatings:</p> <ul style="list-style-type: none"> • Fluorofinish • Duragard • Duragard Plus • Sundance Mica • Sundance AM-Metallic • Versacor Ultra PF, TF, HF, MX • Kolorshift • Allusion • Allura



EcoScreen® Perforated CASCADE Panel

CENTRIA's fabrication capabilities reach new heights with the EcoScreen Perforated CASCADE Panel. Already renowned for its airy aesthetic and outstanding performance that provides elegant camouflage to help blend buildings with their surroundings, the depth of the curve in CASCADE panels further enhances the dynamic play of light and shadow for even more remarkable aesthetics.

CENTRIA: Value in Perfect Form

CENTRIA's commitment to product innovation is second only to our people's commitment to customer service. From our technically trained sales force to our teams of engineering and design professionals, you have access to our support and expertise at any stage of a project.

Elite Dealer Network

CENTRIA also offers an elite Dealer Network that provides skilled installers and construction services. And our in-house coil coating services help ensure color consistency.



www.CENTRIAperformance.com
1.800.759.7474

1005 Beaver Grade Road
Moon Township
PA 15108-2944
Phone: 412.299.8000
Fax: 412.299.8317