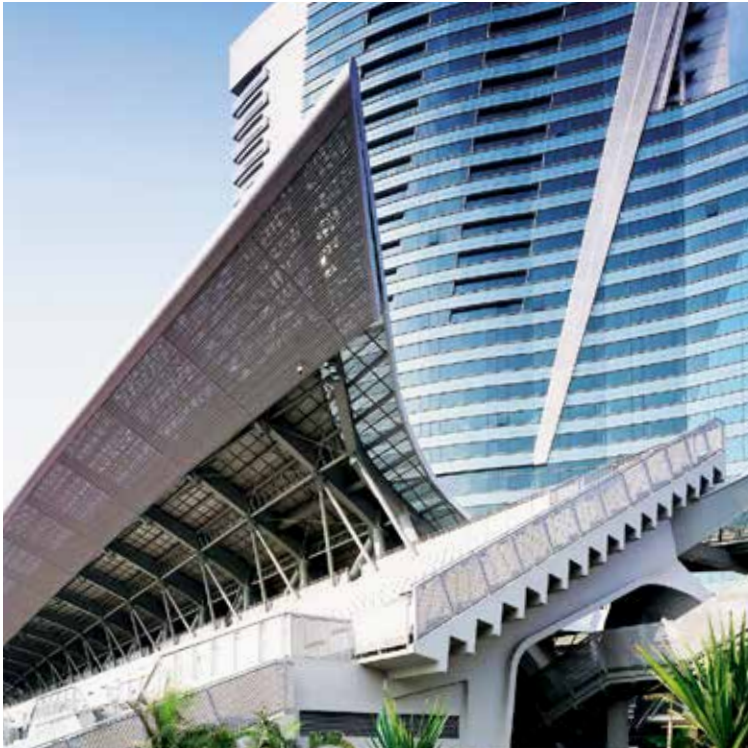




PRODUCT CATALOG

REIMAGINE METAL



CONTENTS

5	Formawall® Dimension Series® Insulated Metal Panel System
11	Formawall® Graphix Series™ Insulated Metal Panel System
13	Formavue™ Integrated Window System
14	Smart-R™ Wall Solution
16	Formawall® Integrated Options
19	Mineral Wool FormaShield DSR Insulated Metal Panel System
20	Versawall® & Versapanel® Wall & Roof Panel Systems
22	Intercept® Modular Metal Panel Systems
25	MetalWrap™ Series Insulated Composite Backup Panel
28	Profile Series Concept Series™ Concealed Fastener Panels
30	Profile Series CASCADE™ Metal Panel Wall Systems
32	Profile Series IW Series Concealed Fastener Panels
34	Profile Series Exposed Fastener Panels
36	Profile Series Liner Panels
37	EcoScreen® Perforated Screenwall
38	Profile Series Design Options
39	VersaShield Wall and Roof Systems
40	SRS® Structural Standing Seam Roof Systems
46	Coating Systems & Substrates
47	Product Finish Availability
48	Prismatic Series™, Sundance Series™ & Duracast® Coatings
50	Kolorshift™ Series Coating System
51	Allusion™ & Allura™ Coating Systems

INNOVATIONS THAT LEAD TO INTERNATIONAL INSPIRATION

As a world leader in the development and production of metal wall and roof systems, CENTRIA is committed to meeting the global demand for our high-performance products. Around the globe, CENTRIA continues to help architects reimagine metal and all of its vast possibilities.

Whether you're in England, China, India or anywhere in the world, we have the tools you need to make your next inspiration a reality. CENTRIA also provides:

- The widest selection of products with the highest level of performance.
- The best in aesthetics with clean lines, vibrant colors and interesting textures.
- A commitment to sustainability and value that protects the natural environment with low maintenance, long lifecycle products.

SUPPORT ACROSS ALL BORDERS

No matter your language or location, CENTRIA not only helps you reimagine metal with some of the best metal wall and roof systems on the market, but also offers a consultative, technically trained sales force; a Design and Development group that advises and troubleshoots; and advisory services to help identify the best substrates, coatings and panels for your project, along with in-house coil coating services, a customer service/project management group that is truly focused on providing excellent service, and one of the best manufacturing and quality control teams in the industry.



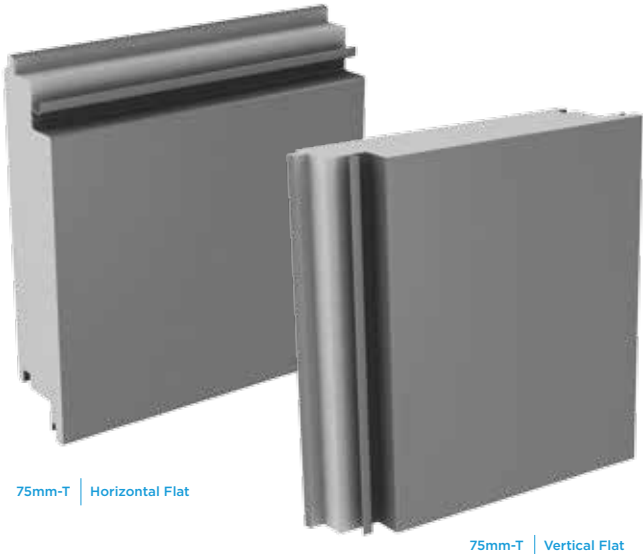
LOCATION	PRODUCTS MANUFACTURED	OTHER PRODUCTS MANUFACTURED WORLDWIDE
China	Concept Series® - All Profiles FormaShield DSR Profile Series Exposed Fastener Wall System IW Concealed Fastener Wall System - IW-10A Only Profile Series Exposed Fastener Wall System (Profiles BR5-36, HR5-36/Style-Rib Only) MicroSeam® Corners SRS® 3 Structural Standing Seam Roof System SRS 65 Aluminum Standing Seam Roof System Versacor® Ultra Coated Products VersaShield	Formawall® Dimension Series® Concept Series® Wall System (Profiles include:CS-200, CS-210, CS-610, CS-620, CS-623, CS-612, CS-613, CS-660) IW Series Concealed Fastener Panels (Profiles Include: IW-10A, IW-11A, IW-12A, IW-13A, IW-14A, IW-15A, IW-20A, IW-21-A) Profile Series Exposed Fastener Wall System (Profiles include: Econolap ½", Econolap ¾", Super-Rib, MR3-36, TR4-36, BR5-36, Style-Rib) CASCADE Metal Panel System Liner Panels Ventilation Systems SRS® Structural Standing Seam Roof Systems (Profiles include: SRS3-1.0, SRS3-1.33, SRS3-1.5) MicroSeam® Corners Formavue® Windows C/S Sunshades & Louvers Versawall® Wall System Versapanel® Wall System Versacor® Ultra Coating Systems
Middle East	Versacor® Ultra Coated Products SRS 3 (Field Roll-formed) Hesco Varifoam™ (In the Kingdom of Saudi Arabia)	
Southeast Asia	Profile Series Exposed Fastener Wall System (BR5-36 Profile Field Roll-formed Only in Indonesia & Thailand) SRS 3 (Field Roll-formed) Versacor® Ultra Coated Products	
Central and South America		
Europe		



FORMAWALL®

The Complete Wall System

FORMAWALL takes single panel wall innovations to new heights of performance and aesthetics. FORMAWALL offers outstanding thermal efficiency and moisture control, combined with virtually unlimited design possibilities, in an extensive range of lengths, widths, reveals and integrated components.



75mm-T | Horizontal Flat

75mm-T | Vertical Flat



UNF Wellness Center Complex | Jacksonville, FL
Borrelli + Partners | PSA-Dewberry



Mary Bird Perkins Cancer Center at Terrebonne General
Medical Center | Houma, LA | Chenevert Architects LLC

FEATURES & BENEFITS

- May be installed horizontally or vertically
- Available in a variety of interchangeable reveals, thicknesses and profile configurations
- Concealed clips, fasteners and sealants plus vertical dry gaskets or insulated metal vertical joints provide a clean, uninterrupted appearance
- Factory foamed-in-place core ensures no insulation gaps within the panel
- Panels integrate with CENTRIA Formavue™ window systems and are compatible with most other glass wall and window systems
- Pressure-equalized horizontal joinery helps prevent water infiltration
- Optional Pressure Equalized Vertical Seal Plate (76mm-T only)
- Extruded aluminum or factory-formed metal trim available
- Panels can be easily curved
- Mitered panels permit clean, sharp corners and beam and column wraps
- Trimless ends eliminate overlapping trim at panel end details
- Thermal break between face and liner offers efficient panel U-values
- High strength panels offer increased span capability and save support costs with less framing required
- Lightweight — as low as 13.2 kg/m² — easy to handle and install and minimizes foundation load
- Striated, variable striated, smooth, embossed and precast-like surface treatments available
- Integrated C/S louvers and C/S sunshades available



DIMENSION SERIES®

DESCRIPTION

Architectural insulated metal panel system

SUBSTRATE & CORE

- Standard .75/.48 gage Z275 galvanized steel face and liner with HCFC-free polyurethane or polyisocyanurate foam-insulated core
- Optional gages available—consult CENTRIA
- Optional stainless steel face sheet, 300 series stainless steel, .75 or .91 gage, smooth, embossed or striated*
- Optional 1mm aluminum face (50mm thick only), flat embossed or smooth striated*

JOINERY

- Horizontal oriented panel—Rainscreen, pressure-equalized and drainable joinery, 13mm nom. joint—standard
 - Optional Pressure Equalized Vertical Seal Plate—75mm-T only
 - Optional Formawall IMV insulated metal vertical joint 16mm joint—standard
- Vertical oriented panel—Double tongue-and-groove, 3mm nom. joint—standard

SURFACE FINISH

- Exterior
 - Non-directional embossed flat or striated
 - Smooth flat or striated
- Interior
 - Non-directional embossed planked or flat
 - Smooth planked

COATINGS & COLORS

See charts on pages 46-51.

PANEL LENGTH

- Smooth—4.88m max.
- Embossed striated—11.28m max.
- Embossed—11.28m max.
- Smooth striated—6.10m max.
- Duracast—8.53m max.
- Stainless—4.88m max.
- Aluminum—3.81m max.

MANUFACTURED

United States

For additional product information refer to pages 8-9.

PANEL TYPE	APPLICATION	THICKNESS	U _{SI} -VALUE ASTM 1363	MODULES	SIDE JOINT REVEALS
FWDS	Horizontal or Vertical	50mm 63mm 75mm-T	U _{SI} =.409 U _{SI} =.341 U _{SI} =.261	254mm-1016mm	13mm Horizontal Joint Standard 3mm Vertical Joint Optional Reveals 6mm, & 6mm to 152mm in 13mm increments
DS59 DS60	Horizontal or Vertical	50mm 63mm 75mm-T	U _{SI} =.057 U _{SI} =.454 U _{SI} =.352	305mm-610mm	Profiled
Steep Slope	Horizontal or Vertical	50mm 63mm 75mm-T	U _{SI} =.409 U _{SI} =.341 U _{SI} =.261	254mm-1016mm	57mm Horizontal Joint Standard, Optional Reveals 32mm, 38mm, 44mm, & 64mm, to 9152mm in 913mm increments

U-Values are based on ASTM C1363 testing. Air films are included. All data shown for flat panels only. Consult CENTRIA for profiled panel information.

FORMAWALL DIMENSION SERIES



- 1 component required
- 1 installer required
- Works for all climates
- Superior thermal efficiency
- Total air & moisture control
- Contains no mold food sources
- Integrated windows, louvers and sunshades
- Proven, systematized, long-term performance

vs.

TRADITIONAL STUD INSULATED MULTI-COMPONENT WALL CONSTRUCTION

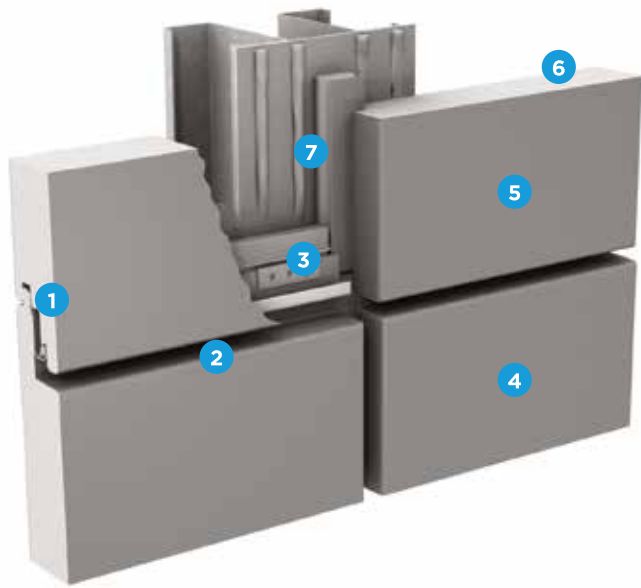
- 7 components required
- Up to 3 installers required
- Climate-specific design required
- Thermally inefficient
- Questionable air & moisture control
- May contain mold food sources
- No integrated components
- Unknown performance—dependent upon installation quality



Patent No.: US 6,253,511; 6,627,128; 6,968,659; 8,261,494 Canada 2,351,846

*Length restrictions apply, please consult CENTRIA

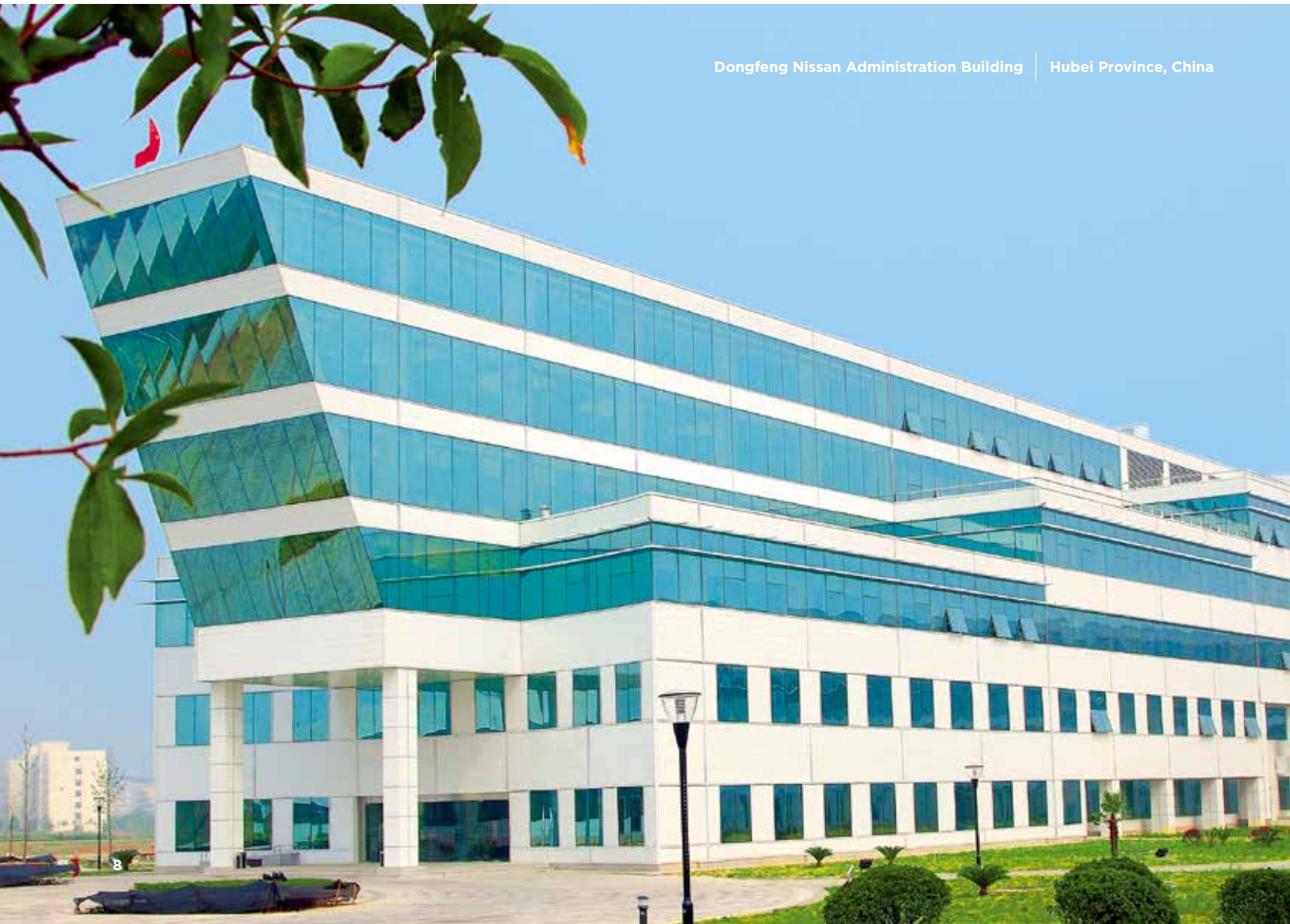
FORMAWALL DIMENSION SERIES Product Details



THE COMPLETE WALL SYSTEM

- 1 Pressure-equalized horizontal joint with concealed sealant protects against water penetration
- 2 Variable reveal sizes, 13mm to 152mm
- 3 Concealed clips and fasteners provide a sleek exterior appearance with proven long-term performance
- 4 High performance coatings offer long-term coverage, minimal maintenance and excellent color selection for your building's exterior
- 5 Durable metal skins provide impact resistance, strength for increased span capability and a built-in vapor barrier on the interior liner
- 6 Insulating foam core, factory foamed-in-place, provides a thermally efficient exterior wall in either 50mm, 63mm, or 75mm thickness
- 7 Unique Insulated Metal Vertical (IMV) joint

Dongfeng Nissan Administration Building | Hubei Province, China





Horizontal Flat
50mm
63mm
75mm-T



Vertical Flat
50mm
63mm
75mm-T



DS59 Horizontal Profile
50mm
63mm
75mm-T



DS59 Vertical Profile
50mm
63mm
75mm-T



DS60 Horizontal Profile
50mm
63mm
75mm-T



DS60 Vertical Profile
50mm
63mm
75mm-T



**Steep Slope
Drain Shelf**



Clark's Logistic Center | Hanover, PA

GNF Architects and Engineers

BUILDING CODE APPROVALS

FIRE TESTS:

- Tunnel Test, ASTM E84;
 - a. Flame Spread 25 max.
 - b. Smoke Developed 450 max.
- UL Room Corner Test, UL 1715
- Factory Mutual Approval: FM 4880
- Factory Mutual Approval: FM 4881
- Multistory Fire Test, NFPA 285
- ASTM D2015; BTU Content Test
- ASTM D1929; Ignition Properties
- UL Fire Wall Designs: 1 hr, 2 hr, 3 hr, U040

SPECIAL APPROVALS:

- Dade County (Missile Impact Resistance)

Consult CENTRIA for test reports.



GRAPHIX SERIES™

Formawall Graphix Series with Directional Reveals is a single component wall system that offers outstanding aesthetics and performance. The distinguishing element is a series of directional reveals that can be combined horizontally, vertically and diagonally on a single panel for a virtually unlimited array of patterns, forms and designs.

FEATURES & BENEFITS

- Panels can be segmented as frequently as every 305mm and can be installed vertically and horizontally
- Vertical, horizontal and sloped reveals provide unrivaled flexibility in design
- Panel finishes are available in a wide range of choices so your Graphix Series design may never be duplicated
- Reveal size, color and face texture can be variable within a single panel (limitations exist for some directional reveal types)
- Directional reveals limit the amount of actual joints, which reduces the risk of air and water infiltration
- Installing one panel that looks like several panels can dramatically reduce installation time and complexity—and may reduce the amount of material used on the project
- Combined with Formawall's integrated components, including windows, louvers and sunshades, it's all you need to build the complete wall in any climate

MANUFACTURED

United States

DESCRIPTION

JOINERY

- Horizontal oriented panel—Rainscreen, pressure-equalized and drainable joinery, 13mm nom. joint—standard
— Formawall IMV insulated metal vertical joint 16mm joint-standard
- Vertical oriented panel—Double tongue-and-groove, 3mm nom. joint—standard
- Segmented joint—16mm x 19mm deep embossment with factory applied black gasket, standard
— Max. segments per panel—24 for "X" and "Y" panels only
— Min. length of segment—305mm

SURFACE FINISH

- Exterior and interior feature non-directional embossed and smooth flat

COATINGS & COLORS

See charts on pages 46-51.

PANEL LENGTH (Steel Face)

- 6.10m max.

For additional product information refer to page 12.

ALL FWGS HORIZONTAL AND VERTICAL PANELS/ALL REVEAL TYPES

THICKNESS	U _{SI} -VALUE ASTM 1363	FACE SUBSTRATE	FACE GAGE	LINER GAGE	LINER TEXTURE	MODULES	SIDE JOINT REVEAL	END JOINT REVEAL
50mm	U _{SI} =.409	Z275	0.91 0.76	0.91mm 0.76mm 0.60mm 0.48mm	Embossed, planked	254mm- 1016mm	12.7mm (25.4mm-152.4mm in 12.7mm increments)	16mm gasket or IMV
				0.91mm 0.76mm	Embossed, flat or Smooth, planked			
63mm	U _{SI} =.341	Z275	0.91 0.76	0.91mm 0.76mm 0.60mm 0.48mm	Embossed, planked	254mm- 1016mm	12.7mm (25.4mm-152.4mm in 2.7mm increments)	16mm gasket or IMV
				0.91mm 0.76mm	Embossed, flat or Smooth, planked			
75mm-T	U _{SI} =.261	Z275	0.91 0.76	0.91mm 0.76mm 0.60mm 0.48mm	Embossed, planked	254mm- 1016mm	12.7mm (25.4mm-152.4mm in 12.7mm increments)	16mm gasket or IMV
				0.91mm 0.76mm	Embossed, flat or Smooth, planked			

U-Values are based on ASTM C1363 testing. Air films are included.

Panel size limitations are based upon the face texture.

Patent No.: 7,895,807; 7,678,219

FORMAWALL **GRAPHIX SERIES** Product Details



- 1 Concealed clips and fasteners provide a sleek exterior appearance with proven long-term performance
- 2 Type Y Directional Reveal
- 3 Placement of segments are specified by designer
- 4 Optional reveals of varying widths
- 5 Segmented joints are treated to match actual gasketed or IMV joint

Y Reveal

FORMAWALL **GRAPHIX SERIES** DIRECTIONAL REVEALS



Formawall Graphix Series Directional Reveals offer the appearance of multiple panels with the ease of one. Create unique, complex patterns and designs that are also easy to install by combining horizontal, vertical and diagonal reveals in a single panel. Panels shown below are horizontal. Vertical panels are also available.



Positive Sloped Reveal



Negative Sloped Reveal



One Type X Reveal



Two Type X Reveals



One Type Y Reveal



Two Type Y Reveals



Type XY Directional Reveals

(Up to 11 available)

FORMAVUE™

Formavue window systems provide innovative integration, resulting in a high performance, thermally efficient window/panel interface for Formawall Dimension Series and Formawall Graphix Series panels.



FV 600 FORMAVUE WINDOW

- 1** Window system eliminates receptor extrusions, provides easier and faster jobsite coordination, and is system tested to ensure superior weather resistance
- 2** Inside glazing options allow easier access for installation or glass replacement; Rsi-value up to .616
- 3** Advanced, thermally-improved design features a thermal barrier that minimizes through-metal conductivity, while maintaining structural integrity tested CRF value of 65

MANUFACTURED
United States

FORMAVUE WINDOW SYSTEM OPTIONS

SYSTEM	TUBE	STUD	SHOP ASSEMBLED	FIELD ASSEMBLED	VERTICAL PANELS	HORIZONTAL PANELS	INTEGRATES WITH
FV 100	✓	✓		✓	✓		50mm thick panel
FV 200		✓		✓		✓	50mm & 75mm thick panels
FV 300	✓			✓		✓	50mm & 75mm thick panels
FV 400	✓			✓		✓	50mm & 75mm thick panels
FV 500	✓	✓	✓			✓	50mm & 75mm thick panels
FV 600	✓	✓	✓			✓	75mm-T thick panels
FV 650	✓	✓	✓			✓	63mm thick panels

All Formavue window systems are designed to accept 25mm insulating glass. FV 100-FV 500 integrate with 50mm and 75mm Formawall Dimension and Graphix Series.

FORMAWALL

SMART-R™ WALL SOLUTION

The Smart-R Wall Solution makes it possible to design projects that are both thermally efficient and the ultimate combination of aesthetics, sustainability and value. Smart-R works so well due to a combination of expertly engineered components and integrated solutions, including wall panels, windows, louvers and sunshades.

Great Lakes Research Center | Houghton, MI | Fishbeck, Thompson, Carr & Huber, Inc.



FEATURES & BENEFITS

DESIGN

- Systems approach to high-performance architectural cladding
- Seamless integration of panels, windows, louvers and sunshades provides sleek sight lines at component joinery intersections
- All-metal joinery provides unrivaled architectural foam panel aesthetics
- Design flexibility with 63mm and 75mm-T thick Formawall Dimension Series DS-59 and DS-60 profiles and Formawall Graphix Series panels

PERFORMANCE

- The 63mm FWDS panels and FV 650 window platform along with the 75mm-T FWDS panels and FV 600 window platform offer enhanced thermal performance

- A combination of concealed shop- and field-applied sealants as well as the Pressure-equalized (PE) Seal plate specifically address critical air and water seals by providing consistency, redundancy and a degree of post inspection
- Shop-assembled windows reduce the risk of air and water failures by simplifying the installation process

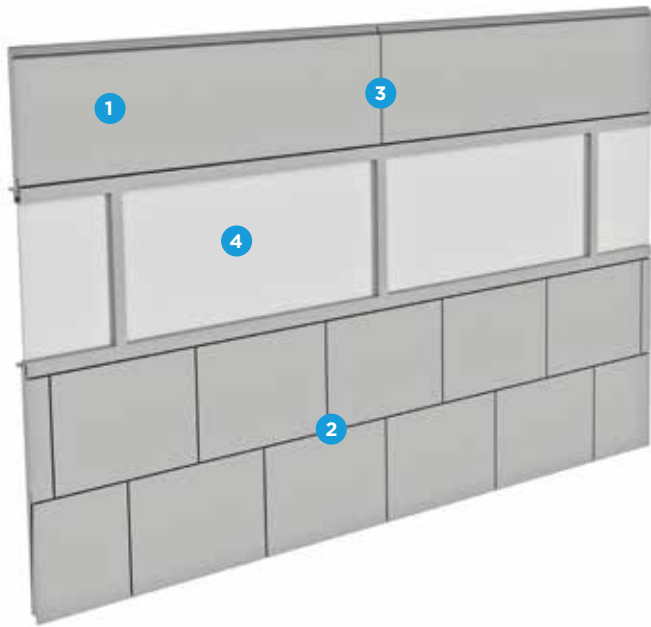
SUSTAINABILITY

- Integrated wall system reduces the amount of material used
- Engineered composite foam panels, integrated accessories and factory-assembled windows reduce jobsite waste
- High-performance wall system improves the overall air, water and thermal performance

MANUFACTURED

United States

SMART-R WALL SOLUTION COMPONENTS



Smart-R Wall

PERFORMANCE OPTION FOR 75MM-T, FV 600 AND IMV



Formawall PE Seal Plate*

- Multiple lines of defense against water infiltration
- Vented, pressure-equalized drain channel minimizes the force that may drive water through the wall system
- An inspectable seal on the interior after the panels are installed

Patent No.: US 8,261,499; US 8,474,202

*Available only with 75mm-T panels and FV 600 windows. Contact CENTRIA for availability.



1 63mm and 75mm-T Formawall Dimension Series insulated metal panels

- Available with all popular Formawall profiles
- Seamlessly integrates with louvers and sunshades
- 63mm panels integrate with FV 650 windows and 75mm-T panels integrate with FV 600 windows
- Pressure-equalized, thermally maximized horizontal joinery
- 63mm - Usi: .341 and 75mm-T - Usi: .261 per ASTM E C 1363



3 Formawall IMV insulated metal vertical joint

- Offers a 4-sided metal joint option
- Added aesthetic flexibility
- Added insulation at the vertical joint
- Also available with pressure-equalized (PE) seal plate

Patent No.: US 8,661,756



2 63mm and 75mm-T Formawall Graphix Series insulated metal panels

- Aesthetic flexibility
- Reduced chance of air and water infiltration
- Installation savings



4 FV 600 and FV 650 Formavue windows

- Shop-assembled, integrated punched or strip window system
- Available on studs or thru-tube supports
- Seamlessly integrates with 63mm and 75mm-T Formawall
- Enhanced thermal performance
- Rsi-value up to .616*

* 25mm Insulating Glass Units with soft coat Low-E and argon gas

FORMAWALL INTEGRATED OPTIONS

CENTRIA's innovations have led to cutting edge developments in integration. The wall panel is just the start — we offer a complete system of components that includes windows, sunshades and louvers; textured finishes like Duracast, along with sleek stainless steel and aluminum surfaces; and design options such as variable striations and variable reveals.



FORMAVUE™ WINDOWS

Seven distinct styles of Formavue windows integrate seamlessly with Dimension Series panels and accommodate a variety of fenestrations and construction types.



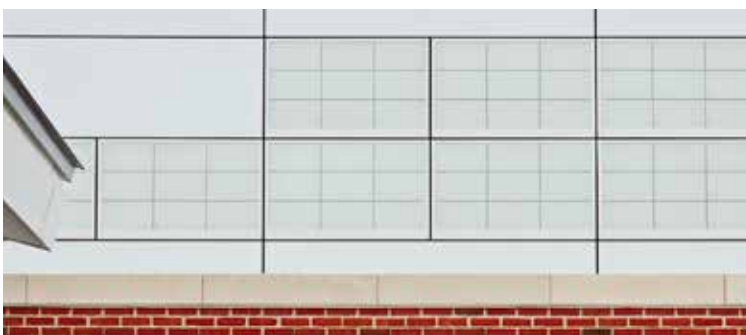
C/S SUNSHADES

CENTRIA and Construction Specialties, Inc. (C/S Group) join forces to provide a wide selection of sunshades engineered for seamless and thermally isolated integration with Formavue windows and Dimension Series panels.



C/S LOUVERS

CENTRIA and C/S Group also provide a full line of fixed, drainable and storm-resistant louvers engineered for seamless integration with Dimension Series panels.



KALWALL® TRANSLUCENT WINDOWS

CENTRIA and Kalwall Corporation have co-designed this Formawall Dimension Series Integrated Translucent Window System. Designed to install easily with CENTRIA 50mm, 63mm, 75mm or 75mm-T Formawall Dimension Series panels, these lightweight and strong window systems combine the beauty and good sense of diffused, natural interior lighting with the functional qualities of high insulation, shatterproof construction and low maintenance.

FINISH OPTIONS

DURACAST® TEXTURED FINISH SYSTEM

Dimension Series panels coated with CENTRIA Duracast finish, which uses a silica aggregate, provides a rugged, natural look. Duracast is available in eight natural earthtones and comes with an exclusive 20-year warranty.



STAINLESS STEEL

Choice of:

- No. 4—A brushed finish
- Embossed, smooth or striated



DESIGN OPTIONS

VARIABLE STRIATIONS

- Striation bands are 152mm wide
- A minimum 25mm smooth band between striation bands
- Striations can run out to both edges
- Striations can be as far from the face edge as desired in 6mm increments



AESTHETIC OPTIONS

VARIABLE REVEALS

A variable reveal adds visual appeal and accentuates scale for CENTRIA's Formawall Dimension Series metal wall panels. The ability to adjust the width of the reveals from 13mm to 152mm in half-inch increments is one more way CENTRIA helps architects create truly innovative aesthetics.





FORMASHIELD DSR

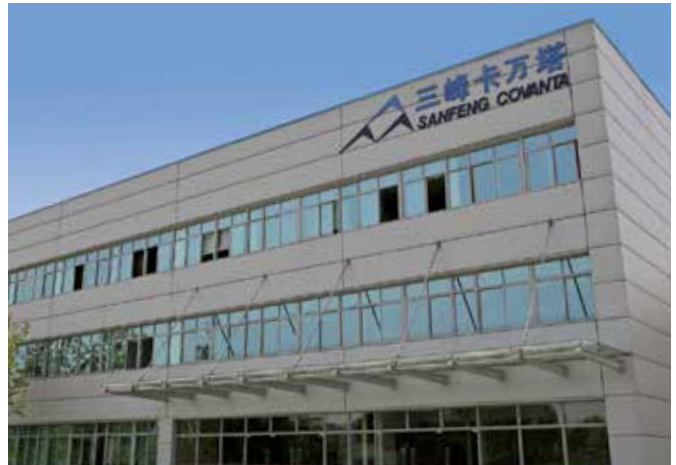
Insulated Metal Panel System

FormaShield DSR is an architectural and industrial metal panel system consisting of two stainless steel, copper, zinc or aluminum skins permanently bonded to a fire resistant mineral wool core. Panels may be installed both horizontally and vertically and are available in a variety of widths, lengths, thicknesses and reveals for a wide variety of design options.



FormaShield Panel

FormaShield Pressure-Equalized Joints



FEATURES & BENEFITS

- Fire resistant and acoustical control
- Composite assembly for flatness and strength
- Horizontal or vertical installation
- Concealed clips and fasteners
- Dry seal joinery
- Trimless ends
- Thermal resistance Rsi -1.25m² K/W (100mm); 3.75m² K/W (150mm)
- Thermal break between face and liner offers thermal efficiency

DESCRIPTION

Fire resistant architectural metal panels with a mineral wool core for exterior walls and interior partitions

SURFACE FINISH

- Exterior- Smooth, Embossed, Striated, Fluorofinish (PVDF), Duragard, or Versacor Ultra
- Interior- Planked, Flat or Acrylic Washcoat

PANEL DEPTH

- 50mm to 200mm

PANEL WIDTH

- 250mm to 1400mm

PANEL LENGTHS

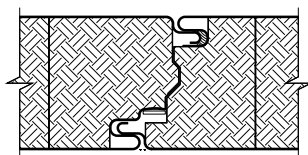
- 2000mm to 12000mm

COATINGS & COLORS

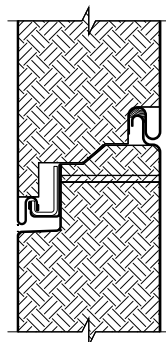
See charts on pages 46-51.

MANUFACTURED

China



Vertical Panel



Horizontal Panel

VERSAWALL® & VERSAPANEL®

Commercial/Industrial Wall & Roof Systems



Versawall and Versapanel wall and roof systems offer design versatility and flexibility with panels that offer long, sleek sight lines. Versapanel's bold standing seam creates an impactful design element when used as a roofing solution.

Boeing Interiors Responsibility Center | North Charleston, SC | BRPH



FEATURES & BENEFITS

- Lightweight panels lower installation costs
- Increased span capability reduces support steel requirements
- Thermal break between face and liner saves energy
- Versawall can be used for interior partitions
- Versawall is available with factory-formed sheet metal flashing or extruded aluminum trim
- Versapanel's snap-on cap conceals joint for a seamless appearance (required on roofs)

DESCRIPTION

Factory foam-insulated wall and roof panel system

SUBSTRATES

- Standard — .48/.48mm G-90 galvanized steel face and liner with HCFC-free foam insulated core
- Optional gages available; consult CENTRIA

JOINERY

- Double tongue-and-groove joinery with factory-applied air and vapor seal

SURFACE FINISH

- Versawall Exterior — Non-directional embossing, flat, striated or planked.
- Versapanel Exterior — Non-directional embossing, planked or flat
- Interior — Non-directional embossing, planked
- Optional Duracast textured finish is available for Versawall and Versapanel wall applications; consult CENTRIA for panel length options

COATINGS & COLORS

See charts on pages 46-51.

MANUFACTURED

United States

PANEL TYPE	APPLICATION	THICKNESS [MILLIMETERS]	U _{SI} -VALUE ASTM 1363	LENGTH [METERS]	WIDTH [MILLIMETERS]
Versawall	Vertical	50mm 70mm 102mm	U _{SI} = .392 U _{SI} = .278 U _{SI} = .221	1.83m-12.19m standard 14.63m max. Consult CENTRIA	762mm & 914mm
Versapanel	Vertical Roofing	44mm 63mm 102mm	U _{SI} = .392 U _{SI} = .295 U _{SI} = .176	1.83m-12.19m standard 14.63m max. Consult CENTRIA	914mm

U-values are based on ASTM C1363 testing. Air films are included.



Versawall 70mm Planked



Versawall 50mm and 70mm Striated



Versapanel 44mm Planked

INTERCEPT™

Modular Metal Panel System

CENTRIA's Intercept Modular Metal Panel System offers a clean, contemporary aesthetic that can be customized in a wide variety of complex applications. Panels can be configured in almost limitless ways and include options such as formed corners, wing walls, soffits and fascias. Panels also can be custom fabricated in different shapes and sizes to suit specific project needs.

Installed using concealed joinery, the Intercept Modular Panel System virtually eliminates exposed fasteners. The unique horizontal joint design provides cavity venting at the base of each panel course, ensuring continuous pressure and temperature equalization at every panel reveal.

Made of pre-painted, light-gauge aluminum or natural finish metals, Intercept panels require little to no maintenance and offer a long product life cycle, making them an extremely economical solution for complicated façade designs.



INTERCEPT ENTYRE PANEL SYSTEM

The Intercept Entyre Modular Panel System offers innovation excellence with a continuous engagement flange and concealed fasteners that work in conjunction with sequentially installed panel units. The fastening flange is featured on the top side in a horizontal orientation and the panel is suspended from the top. There are two material options—1.5mm aluminum and 1.5mm zinc. The Entyre system is simple, effective and perfect for new or retrofit construction.

PERFORMANCE

- Closed Joint Back Ventilated Rainscreen design
- Independent panel attachment

INSTALLATION SEQUENCE

- Bottom up

INSTALLATION PATTERNS

- Vertical and/or horizontal orientation
- Variable running bond—vertically and horizontally

PANEL REVEAL WIDTH

- 20mm (standard)

PANEL DEPTH

- 35mm

PANEL SHAPES

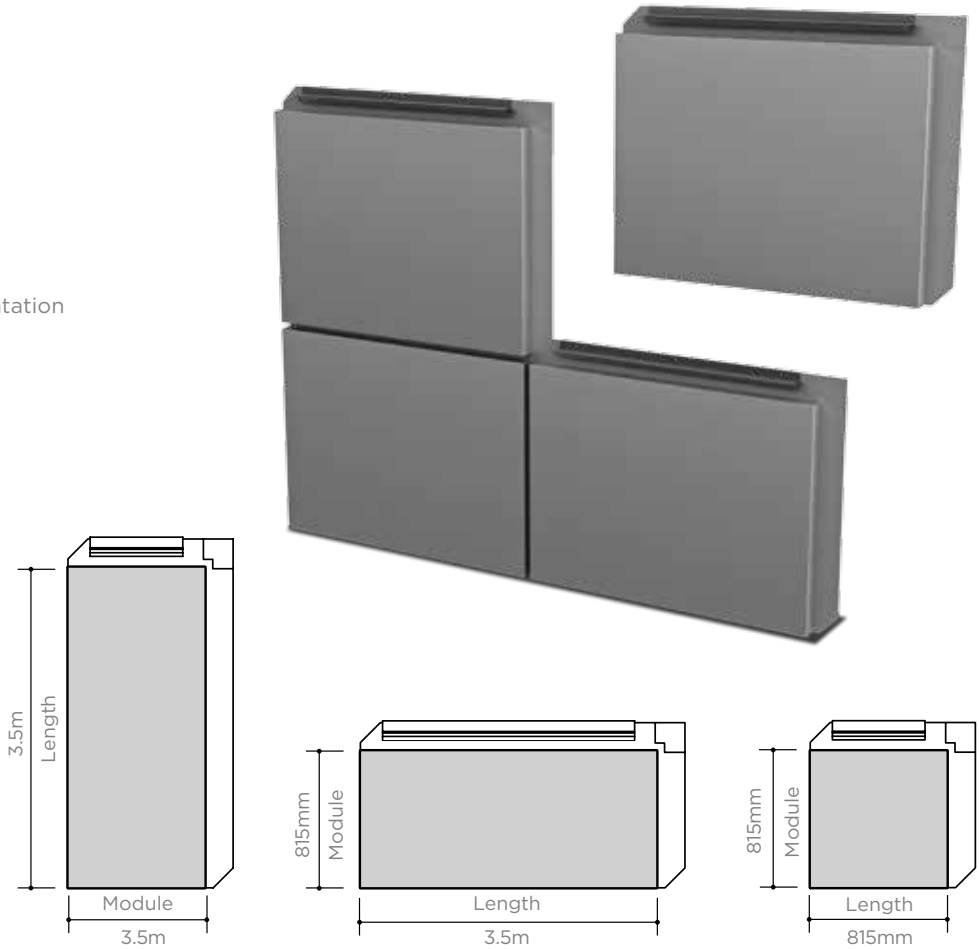
- Square or rectangular
- Multi-planar
- Sloped

EXCEPTIONS

Additional features available upon request

FEATURES & BENEFITS

- Quick installation
- 100% recyclable
- No plastics or gaskets



INTERCEPT V-TRAC PANEL SYSTEM

Custom Applications

The Intercept V-Trac Modular Panel System offers a high quality, monolithic design that delivers amazing performance for custom applications. The concealed fastener system panels are installed sequentially over a vertical carrier track (gullwing) and are suspended from the top using a clip attachment at panel ends.





METALWRAP™ SERIES

Insulated Composite Backup Panel System

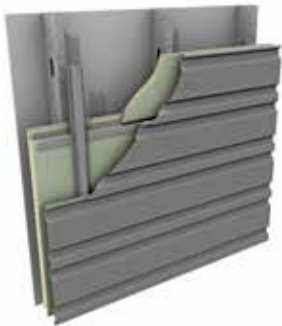
MetalWrap Series' innovative building envelope technology makes it the ultimate insulated composite backup panel—and the perfect solution for virtually any type of exterior rainscreen systems, from single skin metal and ACM, to brick, stucco, terra cotta and a wide range of other exterior cladding products.

FEATURES & BENEFITS

- Provides an air barrier, vapor and moisture control, drain plane and thermal performance in one composite assembly
- Minimizes the potential for water penetration, air infiltration and thermal bridges
- Encloses the building faster in all weather conditions
- Works well for all building types in all climates
- The flexibility to be installed both horizontally and vertically
- Assembly thermal performance achieves U_si-factors that meet or exceed ASHRAE requirements
- MetalWrap with different wall assemblies meets requirements for NFPA 285 multi-story fire test
- Fully tested for air and water infiltration

MANUFACTURED

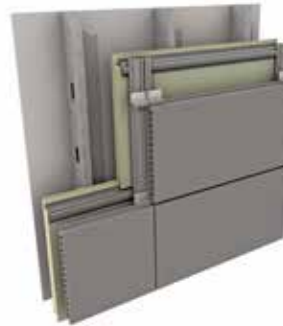
United States



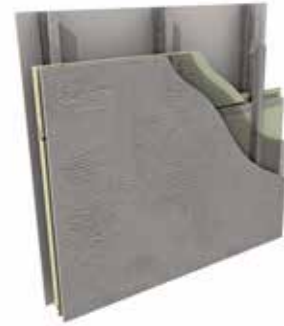
Metal



Brick



Terra Cotta



Stucco

DESCRIPTION

HORIZONTAL INSTALLATION

	METAL, BRICK, TERRA COTTA, STUCCO
Thickness	50mm, 75mm
Width	914mm, 813mm
Length (Std.)*	3.7m or 6.1m
Face	0.36mm Galvalume w/ primer
Liner	0.36mm Galvalume w/ primer
Foam Insulation	Min. 38.44 kg/m ² polyisocyanurate
U Value	50mm - U _s i=.449 75mm - U _s i=.278

VERTICAL INSTALLATION

	METAL, BRICK, TERRA COTTA
Thickness	70mm, 102mm
Width	914mm
Length (Std.)*	3.7m, or 6.1m
Face	0.36mm Z275 galvanized steel w/ primer
Liner	0.36mm Z275 galvanized steel w/ primer
Foam Insulation	Min. 38.44 kg/m ² polyisocyanurate
U Value	70mm - U _s i=.278 102mm - U _s i=.221

*Custom lengths 1.8m - 14m available. Consult CENTRIA.

METALWRAP SERIES COMPONENTS

SINGLE COMPONENT VS. MULTI-COMPONENT

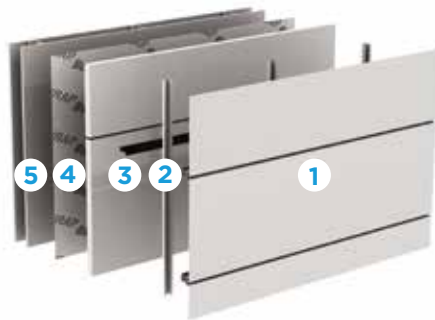
With its single component construction, MetalWrap is a vast improvement over traditional multi-component building technology. A single component means a single source of responsibility, including less coordination, fewer scheduling and interface issues, and one-step installation by one contractor. Together, this adds up to a faster, more efficient construction process.

METALWRAP SERIES



- 1 Exterior Rainscreen
- 2 Subgirts
- 3 MetalWrap Series with integral attachment system

TYPICAL BACKUP SYSTEM

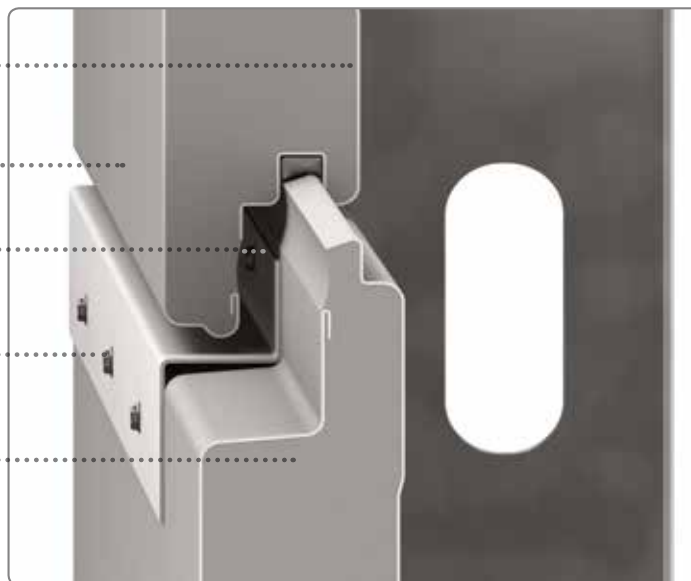


- 1 Exterior Rainscreen
- 2 Zee Support and vertical subgirts (may cause thermal short circuits)
- 3 Insulation
- 4 Air and Vapor Barrier
- 5 Exterior Sheathing

METALWRAP SERIES PANELS UP-CLOSE

MetalWrap achieves building code compliance with its integrated composite panel design. This construction eliminates the need for conventional batt or board insulation, exterior gypsum, air barriers, vapor retarders and building wraps.

- Metal liner provides air and vapor barrier
- Durable metal drain plane
- Pressure-equalized horizontal joinery
- MR-100 integral attachment system
- Rsi-2.466 or Rsi-3.689 tested assembly insulation



PROFILE™ SERIES

Profile Series makes inspiring designs come to life with highly aesthetic, high performance panels that are also highly cost-effective.

West Sacramento Community Center | West Sacramento, CA | Group 4 Architecture



PROFILE SERIES

CONCEPT SERIES™

Concealed Fastener Panels

Concept Series single-skin panels make inspiring custom aesthetics possible with a combination of concealed fasteners and a common lock joint that can be interchanged. Featuring a wide range of profiles, Concept Series panels work well for both insulated and uninsulated walls.



CS-220

Pier 27 | San Francisco, CA | Pfau Long Architecture | KMD Architects



FEATURES & BENEFITS

- Panels may be installed vertically and horizontally*
 - Common lock joint allows panels to be mixed freely for custom-like aesthetics with other Concept Series panels and our new CASCADE panels.
 - Concealed clips and fasteners
 - Cost effective with a clean, unbroken appearance allowing for interesting visual effects
 - Excellent for new construction and retrofit projects
 - All-weather installation capability shortens installation time and permits fast-track scheduling
 - Panels are available with stucco-embossed or smooth finishes
 - May be insulated to meet many levels of thermal protection
 - Concealed extended leg option
 - EcoScreen for CS-260 and CS-660 profiles
 - Profile Louvers for CS-260 and CS-660 profiles
- *Horizontal applications require a backup with exterior sheathing and a weather-resistant air barrier.

DESCRIPTION

SUBSTRATES

- Standard .60mm-1.2mm Z275 galvanized steel
- Galvanized steel, steel, aluminum, zinc or stainless steel—optional
- Smooth or embossed surface texture

CONCEPT SERIES PROFILES

- Lengths up to 9.14m
- Concealed clips and fasteners
- Stand-off clips provide ventilation cavity and continuous drain plane behind panel
- Horizontal or vertical wall installation
- Common joint design permits multiple profile integration with Concept and CASCADE Panels
- Concealed extended leg option

COATINGS & COLORS

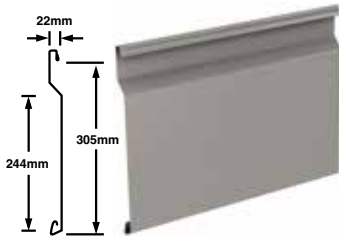
See charts on pages 46-51.

Patent No.: US D538,948; D527,834

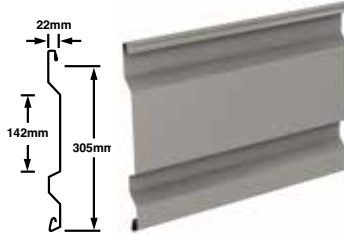
"Oil canning" is an inherent part of light gage cold-formed metal products, particularly those with broad flat areas. CENTRIA takes every precaution, as defined by MCA, to minimize the effects of oil canning. Lack of flatness or waviness due to oil canning is not sufficient cause for rejection of material

** .60mm only available in certain profiles. Consult CENTRIA.

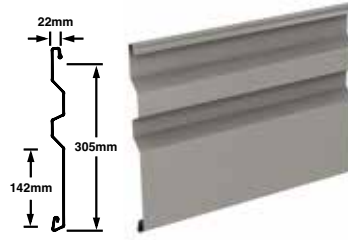
CS-200



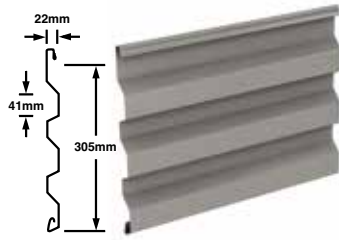
CS-210



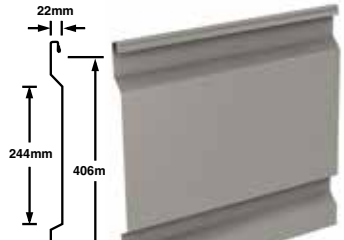
CS-220



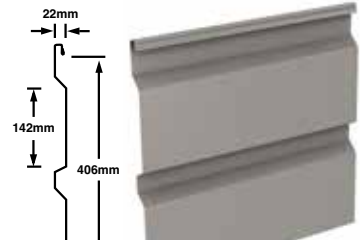
CS-260



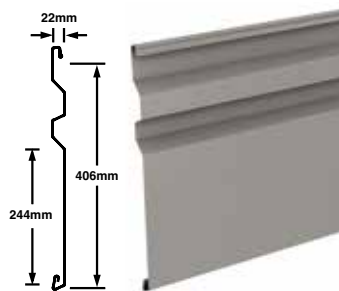
CS-610



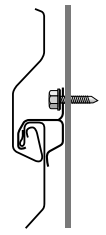
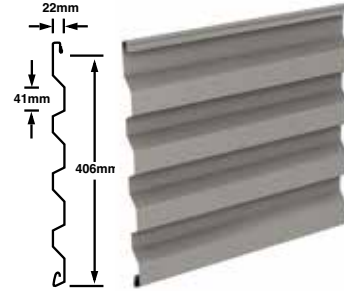
CS-620



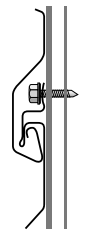
CS-630



CS-660



Concealed Clip Fastener (standard)



Concealed Extended Fastener Leg (optional)

MANUFACTURED

- Profiles CS-200, CS-210, CS-610, CS-620, CS-623, CS-612, CS-613, CS-660 manufactured in United States.



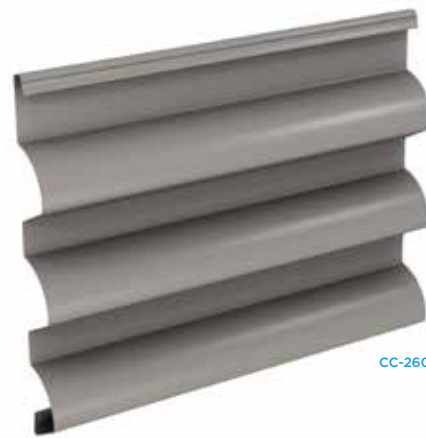
South Texas Research Facility | San Antonio, TX | Rafael Vinoly Architects | Kirksey Architecture

PROFILE SERIES

CASCADE™

Metal Panel System

CASCADE interchangeable single-skin metal panels set a new standard in aesthetics with a striking signature curve and a bold, flat, sloped rib profile. The result is a delicate play of light and shadow relief like no other panel on the market today.



FEATURES & BENEFITS

- Features concealed fasteners and a common-lock joint
- Includes seven unique profile rib panels that work with each other
- All-weather installation capability shortens installation time and permits fast-track scheduling
- The flexibility to insulate the panels with a liner panel offers many levels of thermal protection
- Can be installed vertically and horizontally
- Can be integrated with Concept Series panels
- Distinctive 38mm deep rib consists of a soft curve combined with an angular sloped web for deep shadow relief

DESCRIPTION

- Panel modules — 305mm or 406mm dependent upon profile selection
- Lengths up to 9.14m
- Concealed clips and fasteners
- Stand-off clips provide ventilation cavity and continuous drain plane behind panel
- Horizontal or vertical wall installation
- Common joint design permits multiple profile integration

SUBSTRATES

- Standard .76-1.2mm Z275 galvanized steel
- Galvanized steel, Galvalume® steel, aluminum or stainless steel — optional
- Smooth or embossed surface texture

COATINGS & COLORS

See charts on pages 46-51.

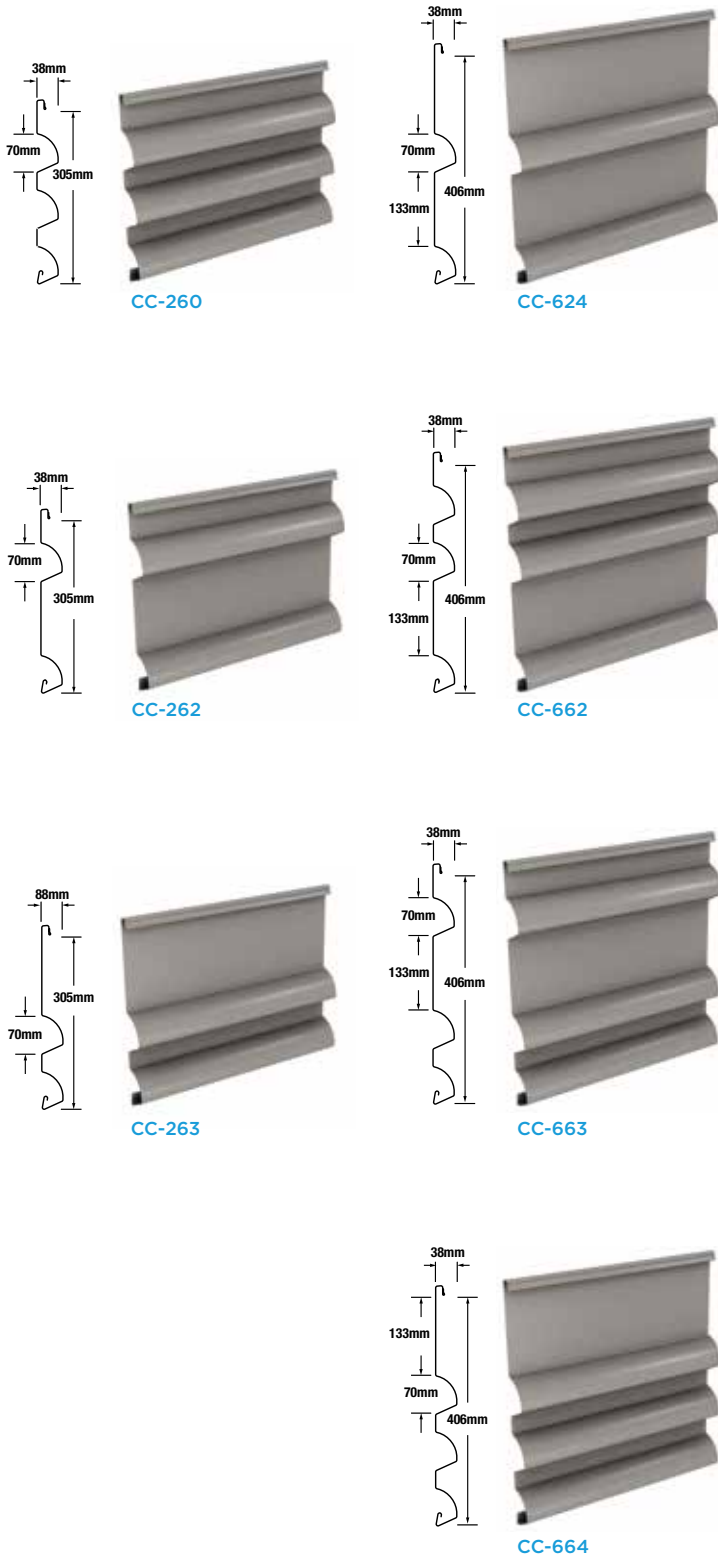
MANUFACTURED

United States

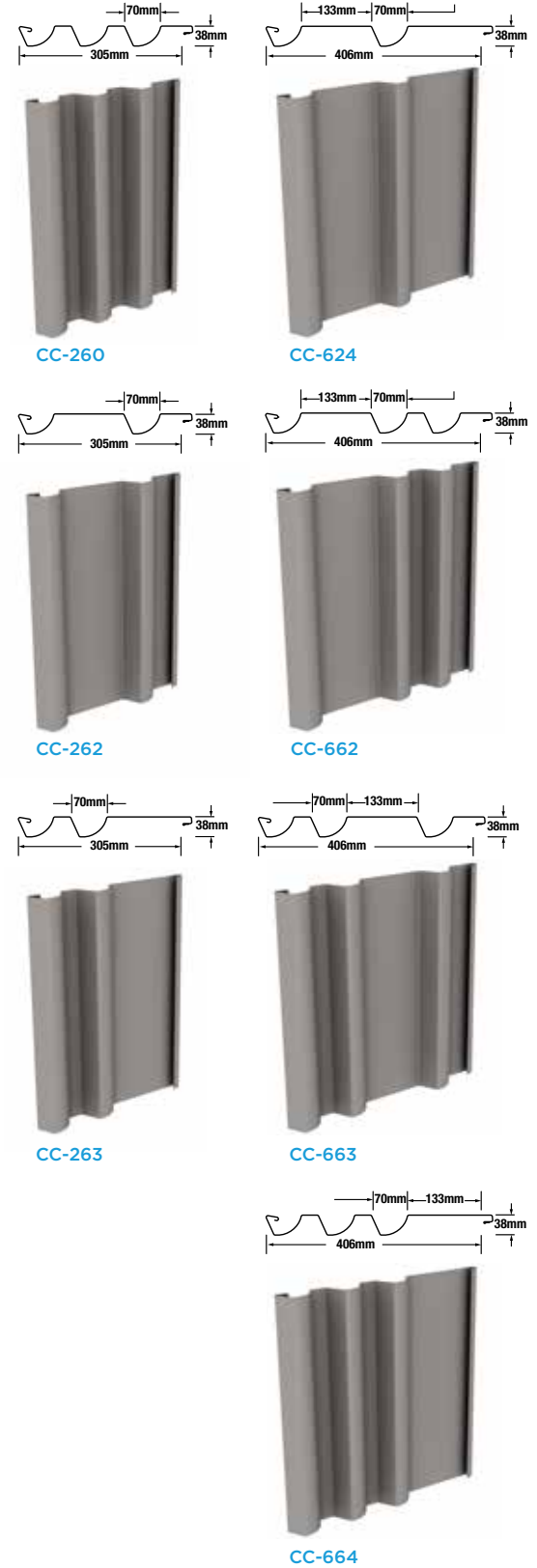
“Oil canning” is an inherent part of light gage cold-formed metal products, particularly those with broad flat areas. CENTRIA takes every precaution, as defined by MCA, to minimize the effects of oil canning. Lack of flatness or waviness due to oil canning is not sufficient cause for rejection of material.

Patent pending.

HORIZONTAL



VERTICAL



PROFILE SERIES

IW SERIES

Concealed Fastener Panels

Unique visual effects are possible with IW Series—featuring concealed fasteners for a clean, unbroken aesthetic. Available in stucco-embossed or smooth finishes, the panels also feature a common-lock joint design.



IW-10A



Ray and Joan Kroc Comm. Center | Dayton, OH | John Poe Architects

FEATURES & BENEFITS

- No exposed panel fasteners
- Cost-effective, with a clean, unbroken appearance
- All panels are interchangeable because of the common-lock joint design, which allows for appealing visual effects
- Excellent for new construction and retrofit projects
- All-weather installation capability shortens installation time and permits fast-track scheduling
- May be used with an insulated liner panel to meet many levels of thermal protection
- Panels are available with stucco-embossed or smooth finishes and in flush, ribbed, striated and stepped profiles

NOTE: Swaged ends of 51mm length are available in .76 mm and .90mm only. Not available in IW-12A, IW-14A, and IW-15A.

DESCRIPTION

SUBSTRATE

- Standard .76-1.2mm Z275 galvanized steel
- Steel, aluminum, zinc* or stainless steel—optional
- Smooth or embossed surface textures

IW SERIES PROFILES

- Lengths up to 9.14m
- Horizontal or vertical wall installation
- Common-lock joint design of IW-10A through IW-41A makes panels interchangeable
- Horizontal applications require a backup with exterior sheathing and a weather-resistant air barrier
- Available with MicroSeam® corners

COATINGS & COLORS

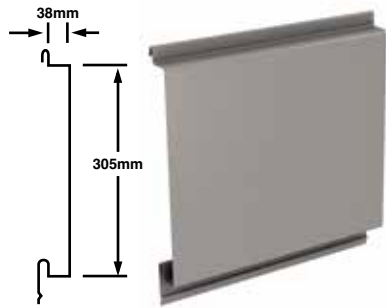
See charts on pages 46-51.

MANUFACTURED

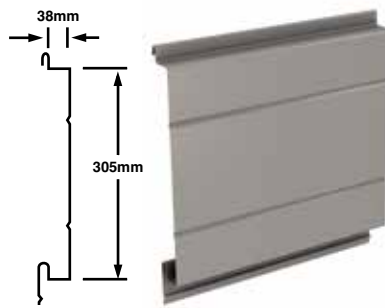
- Profiles IW-10A, IW-11A, IW-12A, IW-13A, IW-14A, IW-15A, IW-20A, IW-21A, IW-31A, IW-40A, IW-41A manufactured in United States.
- Profile IW-10A is also manufactured in China.

*Vertical orientation only for IW-10A through IW-15A.

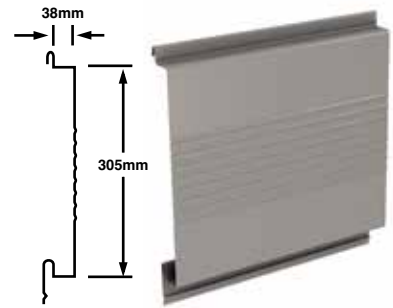
IW-10A



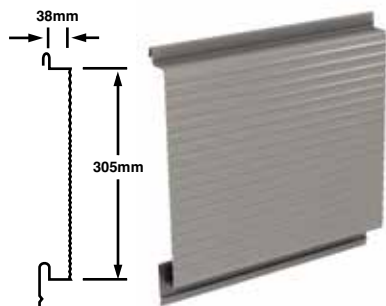
IW-11A



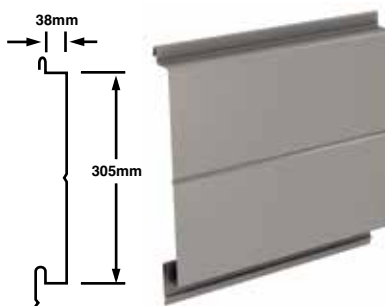
IW-12A



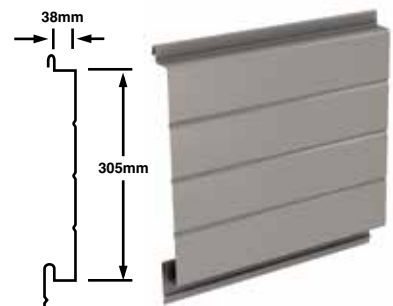
IW-13A



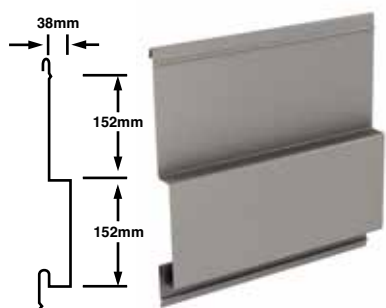
IW-14A



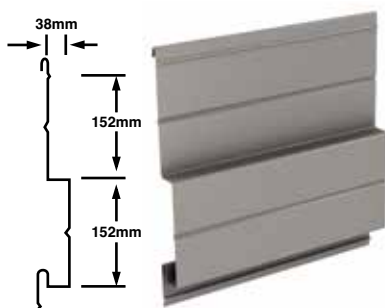
IW-15A



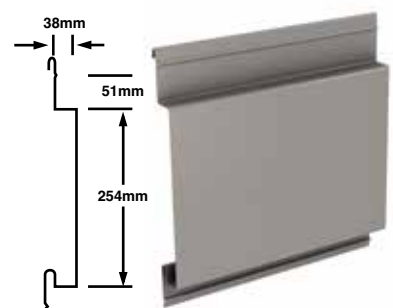
IW-20A



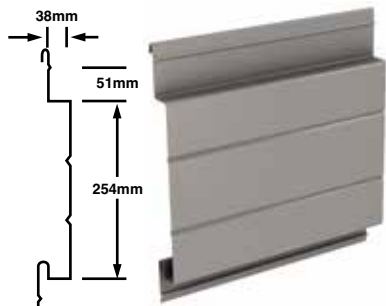
IW-21A



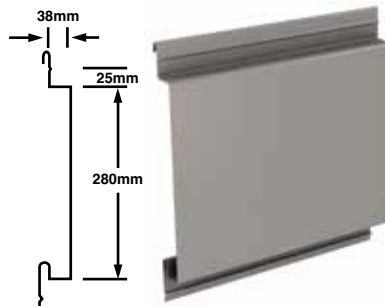
IW-30A



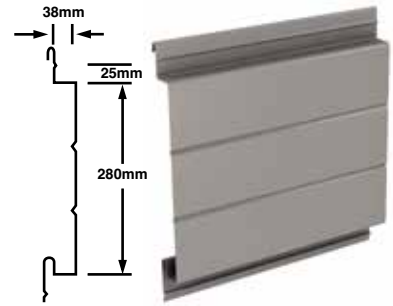
IW-31A



IW-40A



IW-41A

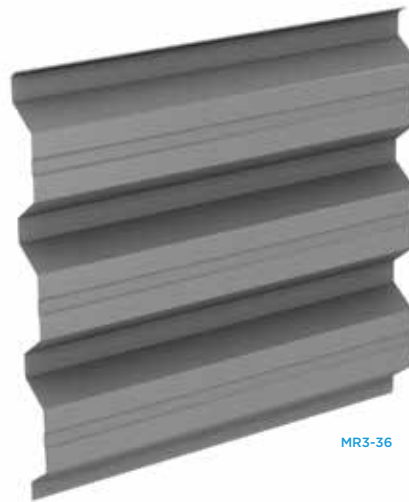


For information about product width in metric, please consult CENTRIA or visit CENTRIA.com.

PROFILE SERIES

EXPOSED FASTENER PANELS

Exposed Fastener panels provide flexibility—and virtually unlimited aesthetic possibilities—with panels that can be used as exterior or interior walls, roofs or soffits.



MR3-36



Lincoln Elementary | Louisville, KY | Bravura Architects

FEATURES & BENEFITS

- Extremely versatile panels can be used as exterior or interior walls, roofs and soffits
 - Ribs can be run either horizontally* or vertically
 - May be used with an insulated liner panel to meet many levels of thermal protection
 - Excellent negative wind load properties
 - All-weather installation capability minimizes delays and permits fast-track scheduling
 - Panels are available in stucco-embossed or smooth finishes
- * Horizontal applications require a backup with exterior sheathing and a weather-resistant air-barrier

DESCRIPTION

SUBSTRATES

- Standard .60–1.2mm Z275 Galvanized Steel
- Aluminum or stainless steel—optional
- Smooth or embossed surface textures

** .61mm only available in certain profiles. Consult CENTRIA.

EXPOSED FASTENER PROFILES

- Horizontal or vertical wall installation
- Wall and roof installation
- Lengths up to 12.19m; consult CENTRIA

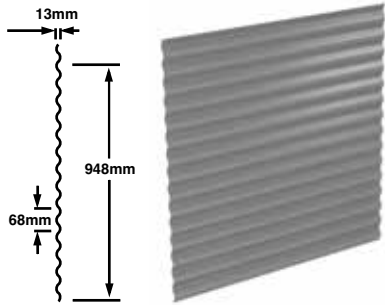
COATINGS & COLORS

See charts on pages 46-51.

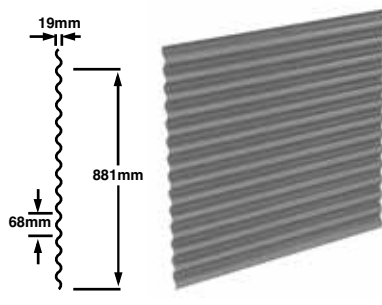
MANUFACTURED

- Profiles Super-Rib, MR-336, TR4-36, BR5-36, Style-Rib are manufactured in United States.
- Profile BR5-36 is Field Roll-formed only in Indonesia and Thailand.
- Profiles BR5-36, HR5-36/Style-Rib manufactured in China.

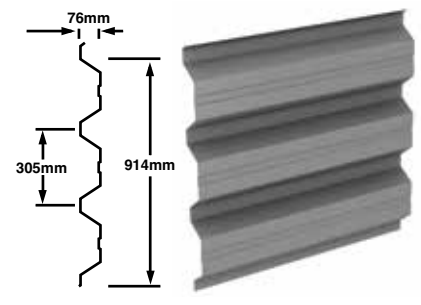
ECONOLAP 1/2"



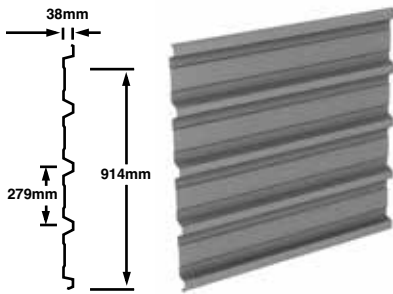
ECONOLAP 3/4"



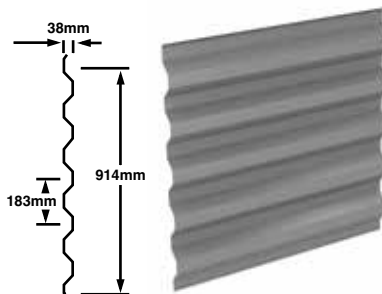
MR3-36



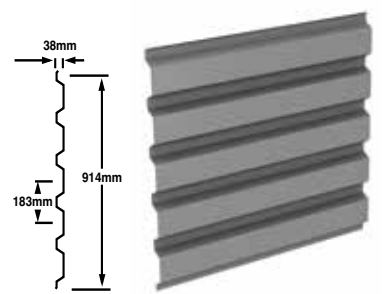
TR4-36



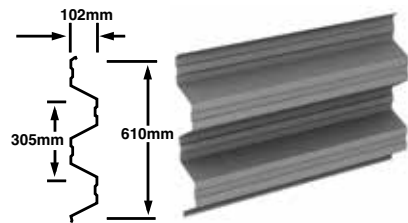
STYLE-RIB



BR5-36



SUPER-RIB



San Jose City College | San Jose, CA | BFGC Architecture

PROFILE SERIES

LINER PANELS



FEATURES & BENEFITS

- Incorporate liner panel, subgirts, varying thicknesses of noncombustible fiberglass insulation and any CENTRIA exposed fastener or concealed fastener panel for a complete field-assembled wall system
- High “R” Values, depending upon insulation
- Provides a flush appearance to building interiors
- Perforated liner panels available for tested acoustical performance
- Firewall systems

DESCRIPTION

Minimize heat loss or gain to conserve valuable energy with CENTRIA liner panels

SUBSTRATE

- .61–1.2mm Z275 galvanized steel
- Smooth or embossed

PANEL WIDTH

- 610mm



L2-3

PANEL LENGTH

- 9.14m max.

PANEL THICKNESS

- L2 – 35mm
- L2-2 – 50mm
- L2-3 – 75mm
- L-21A – 38mm (for interior partitions)

COATINGS

See chart on page 46.

MANUFACTURED

United States

PROFILE SERIES **LINER PANELS** PRODUCT DETAILS



L2



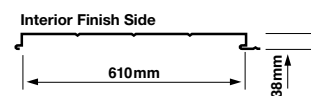
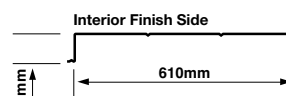
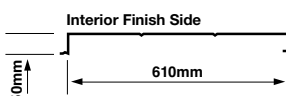
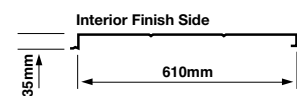
L2-2



L2-3



L-21A



PROFILE SERIES **QUIETWALL & FIREWALL** SYSTEMS



QUIETWALL SYSTEM

CENTRIA Quietwall systems help you select a wall system with specific sound absorption or transmission loss values that your design requires—more economically and more efficiently.

FIREWALL SYSTEM

With the CENTRIA firewall system, layers of gypsum board between the exterior Profile panel and the insulation and liner panel create UL one-hour through four-hour firewalls based on ASTM E119 fire tests.

OTHER SYSTEMS

- Explosion Release
- RF Shielding

MANUFACTURED

United States

ECOSCREEN®

Perforated Screenwall

CENTRIA's innovative fabrication process gives EcoScreen perforated screen walls an airy aesthetic and provides a distinctive way to blend industrial and other applications with their surroundings.

BR5-36



CS-260



CS-660



ECONOLAP 3/4"



MR3-36



STYLE-RIB



CC-260



Images showing standard 40% open area staggered pattern, 10mm diameter, 14mm spacing.

MANUFACTURED

United States



ECOSCREEN PERFORATION PATTERN OPTIONS

Open/Free Area Percentage	Pattern	Diameter (mm)	Spacing (mm)
10%	Reverse	3.2	9.5
23%	Staggered	3.2	6.4
23%	Reverse	6.4	12.7
30%	Staggered	3.2	5.6
33%	Staggered	4.8	7.9
40%	Staggered	3.2	4.8
40%	Staggered	9.5	14.3

Bold lines are standard. For additional patterns, contact CENTRIA.

DESIGN OPTIONS

Profile Series design options like MicroSeam® Corners, MicroLine™ Extrusions, Profile Louvers and Curved Panels give projects a sleek, finished look or an interesting accent.



MICROSEAM® CORNERS

MicroSeam Corners use cutting edge structural bonding techniques to produce corners that appear virtually seamless. Manufactured from the same metal substrate coil as the panels, MicroSeam corners employ no welding and no pop rivets. Like all CENTRIA panels, they are fully tested for performance. MicroSeam Corners are available on BR5-36, Econolap 3/4", MR3-36, Style-Rib, Super-Rib, TR4-36, all Concept Series profiles, all CASCADE Metal Panel System panels and all IW Series profiles. They are also available in CENTRIA's full palette of nearly 100 colors, including metallics and Versacor Elite.



MICROLINE™ EXTRUSIONS

MicroLine details incorporate aluminum extrusions designed to integrate visually and mechanically with CENTRIA Profile Series Concept Series panels and horizontal CASCADE metal panels. Slim 50mm wide MicroLine extrusions make it a snap to trim and finish around windows and doors, inside or outside corners, and at the base of walls; or to create clean vertical joints. MicroLine details enable you to replace wide, obtrusive flashing and exposed fasteners with narrower, crisper and cleaner finished lines, and can be finished to match or complement wall panels. Also available for horizontal applications of IW Series, CASCADE panels, Style-Rib, BR5-36, Econolap 3/4" and TR4-36. MicroLine details are available for Concept Series profiles in horizontal and vertical applications.



PROFILE LOUVERS

CENTRIA Profile Louvers come in gages, colors and finishes to match corresponding panels and blend invisibly into a wall, eliminating visual breaks in sight lines. Profile Louvers are available for horizontal installation with BR5-36, Inverted BR5-36, MR3-36, CS-260, CS-660, Style-Rib or Super-Rib wall panels. Variable blade depths from 38mm to 203mm create free area from 10% to 49% for air intake or exhaust.



CURVED PANELS

With CENTRIA curved panels you can add radius design elements to your projects. They are available in a wide selection of exposed fastener profiles, finishes and colors to match virtually any architectural, commercial or industrial application. Curved panels are ideal for canopies and awnings, roofing, fascia, walls, curved parapets, curved trim, and column and beam wraps, where they can be used to add bold visual statements or innovative special effects.

CENTRIA fabricates curved panels from a variety of architectural panel profiles. They are available in a number of finishes to match your application, and in the full CENTRIA color palette.

VENTILATION SYSTEMS

CENTRIA also offers ventilation systems as an aesthetically pleasing way to improve building performance. Options include continuous ridge ventilators, continuous clamshell ventilators and small streamline ventilators.

VERSASHIELD

Wall and Roof Panels



VersaShield wall and roof panels offer superior fire protection with a finished interior liner, factory applied air and vapor seal, insulating mineral wool core and finished exterior weathering surface incorporated into a single building unit.

FEATURES & BENEFITS

- A single component metal panel solution for exterior applications
- A non-combustible mineral wool core that provides superior fire performance as well as good thermal characteristics
- Mineral wool core bonded to exterior and interior metal skins

DESCRIPTION

Mineral wool core insulated roof panels.

PANEL THICKNESS

- 100mm, 125mm, 150mm or 200mm
- 914mm panel module

JOINTS

- Tongue and groove; lap side joint
- Cope and overlap end joint

CORE MATERIAL

- Mineral wool core

BASE MATERIAL

- Z275 Galvanized Steel

THERMAL PROPERTIES

- Rsi Value/25mm @24°C 0.71 M² k/w

EXTERIOR FACE

- Standard .45mm embossed
- Optional .90mm, .75mm, .60mm smooth or embossed

INTERIOR LINER

- Standard .90mm, .75mm, .60mm smooth, embossed or planked

LENGTHS

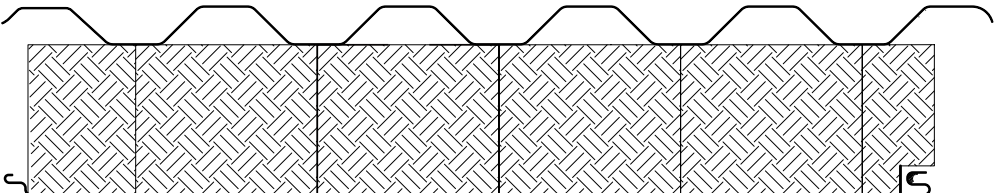
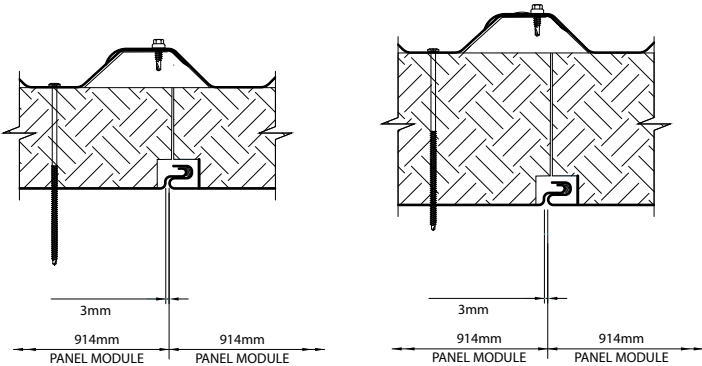
- Standard 2m to 11m

COATINGS & COLORS

See charts on pages 46-51.



VersaShield





Structural Standing Seam Roof Systems



CENTRIA's expertise in total building envelope solutions is beautifully expressed in high-performance structural standing seam (SRS) metal roof systems. SRS panels are designed for maximum performance in any climate or environment. Along with a unique clip and panel interlock that enhances thermal performance, these panels perform well by being constructed with a raised portion where the two panels meet. This feature, combined with long panel lengths, eliminates transition flashing and enhances weather resistance. CENTRIA's SRS product line is available in three distinct options: SRS 3, SRS 360 and SRS 65.

Chongqing Wanzhou Natatorium | Chongqing, Wanzhou District, Chongqing Province, China | China Architecture Design and Research Institute



SRS 3

Featuring clean, unbroken lines and offering outstanding performance, CENTRIA's classic structural standing seam roof system makes dynamic, inspiring aesthetics possible. SRS 3 panels offer architects advantages that give their designs more freedom and flexibility. The panels are non-directional, which enables them to be installed left to right, right to left, or from the middle of the roof in both directions.



SRS 3 Panel

FEATURES & BENEFITS

- Long panel lengths eliminate transition flashing, enhance weather resistance
- Unique concealed clip and panel interlock design allows unimpeded thermal movement without damage
- Mechanical seaming of roof panels in the field ensures weather resistance and enhances appearance
- UL 580 Class 90 listing
- FM 1-90 and FM-180
- Dade County NOA
- Low slope applications:
2.40° without endlaps
4.76° with endlaps
- Can be field roll-formed, eliminating endlaps
- SRS 3 can be curved to various radii

DESCRIPTION

Structural standing seam roof systems

SUBSTRATES

- SRS 3 — .61-1.2mm
- Batten maximum .91mm
- Z275 galvanized steel, Galvalume®, stainless steel*, and aluminum

PANEL WIDTH

- 305mm, 406mm, 457mm

PANEL DEPTHS

- SRS 3 — 75mm

PANEL LENGTH

- Standard — Factory-formed — up to 14.63m max.
Optional — up to 18.29m
- Field-formed — 70m max.

COATINGS & COLORS

See charts on pages 46-51.

MANUFACTURED

- Profiles SRS 3-1.0, SRS 3-1.33, SRS 3-1.5 manufactured in United States.
- All profiles manufactured in China.
- SRS 3 is Field Roll-formed

Oil canning within industry standard guidelines as defined by MCA is not a cause for rejection.



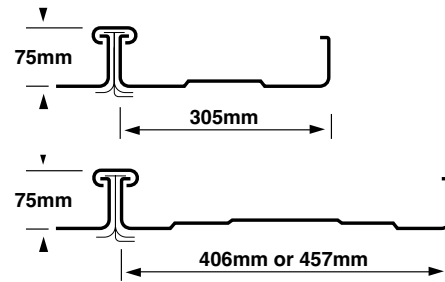
SRS 3 CURVED

- SRS 3 mechanical curving process
- Available in 305mm, 406mm and 457mm widths
- Curving performed on-site or in the plant, using CENTRIA-supplied equipment
- Consult CENTRIA for the minimum radius available for each gage



SRS 3

SRS 3 PLANKED



Architectural Design Panels*

ADP 100

ADP 100B

ADP 100C

Structural Design Panels*

SDP 175

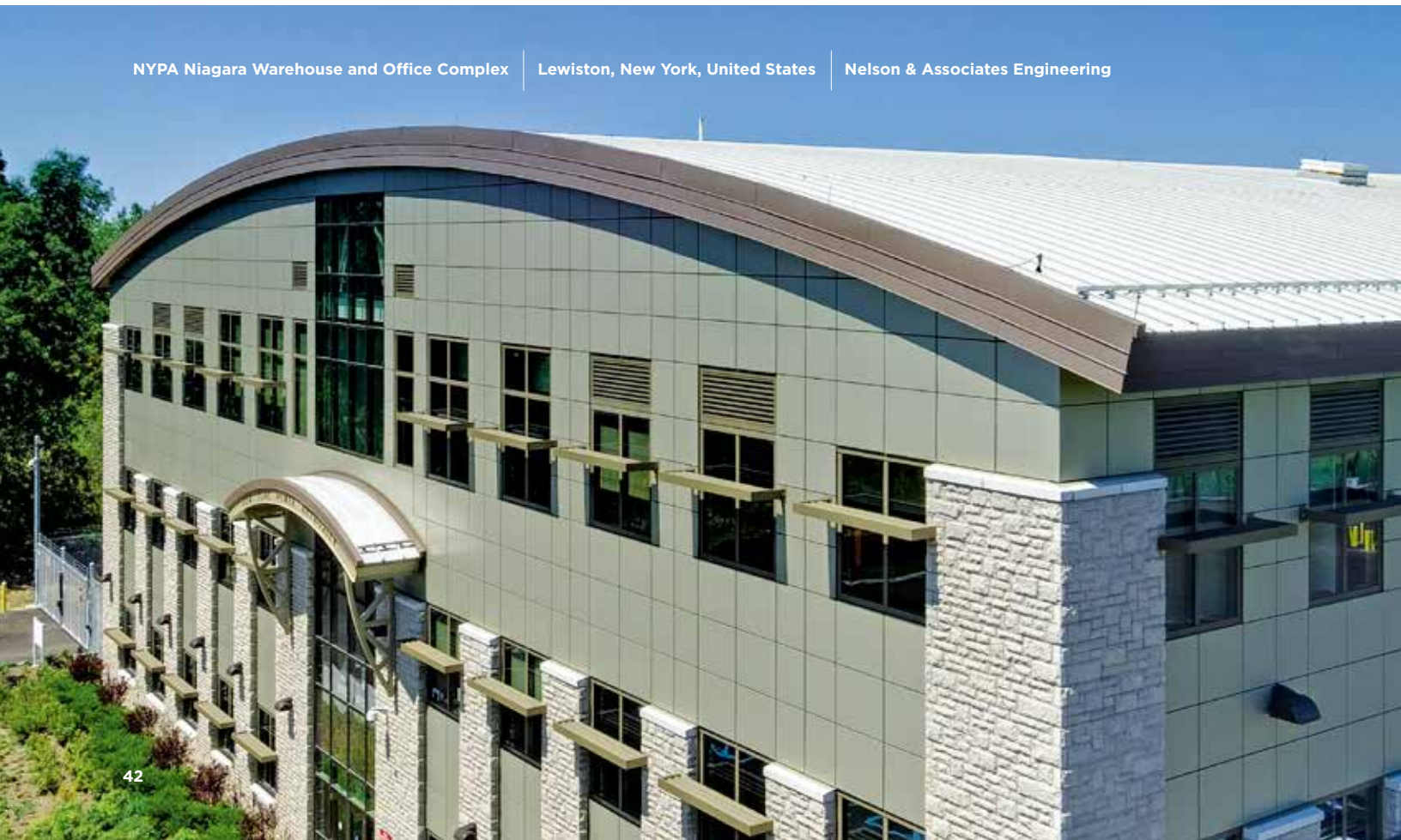
SDP 200

*Contact CENTRIA for product substrates and parameters.

NYPA Niagara Warehouse and Office Complex

Lewiston, New York, United States

Nelson & Associates Engineering



SRS 360

SRS 360 panels are engineered for design flexibility. These panels utilize more of the coil width, seamed with 360-degree bulb-type ribs with two pieces of floating clips. These panels can accommodate complex and large roof configurations.



SRS 360

FEATURES & BENEFITS

- Available to standard factory lengths up to 32m
- Corrosion-resistant, long-lasting, durable aluminum substrate
- The 65mm machine-sealed ribs strengthen the overall panel structure and provide an impenetrable weather barrier against rain, wind, snow and ice
- Concealed floating clip attachments, available in a variety of configurations to meet any substrate conditions, eliminate penetrating fasteners at structural supports and side laps
- Virtually maintenance free except for annual inspection to ensure free drainage and proper functioning of flashing
- While the minimum recommended slope is 4.2%, shallower slopes have been used successfully without any compromise of watertight performance

DESCRIPTION

Standing seam metal roof system

SUBSTRATES

- Aluminum-Zinc Alloy Coated Steel (Galvalume)
- Stainless Steel
- Copper
- Zinc
- Titanium

GAGES

- 0.5mm-0.8mm

PANEL WIDTH

- 495mm

PANEL LENGTH

- Factory-formed panel lengths to 32m; field formed over 100m

PANEL HEIGHT

- 65mm

SLOPE

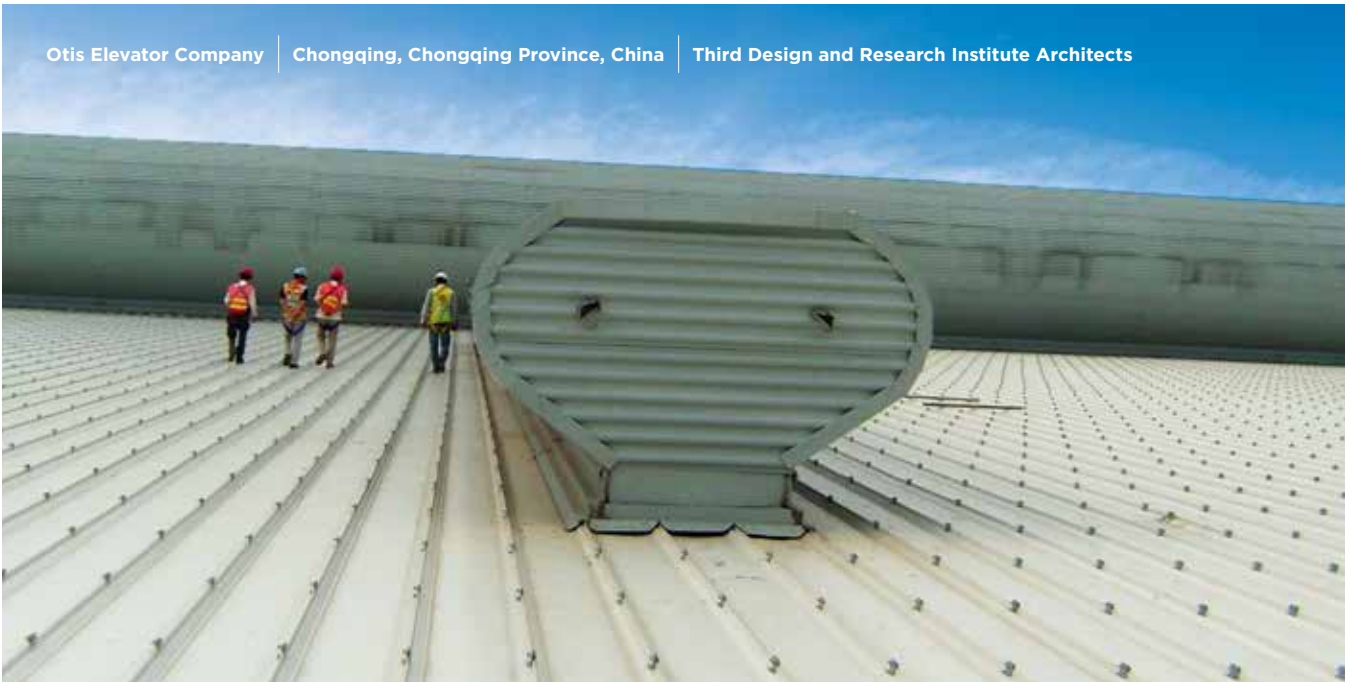
- 2% minimum

COATINGS & COLORS

- See charts on pages 46-51.

TESTING

- Air Permeability classification: Class 4
- Water tightness classification Class 5 (2.0 kPa)
- Resistance to wind load classification: Class 1





SRS 65

SRS 65 panels are engineered for the design flexibility architects require and can be used on a wide spectrum of buildings. These panels can accommodate complex roof configurations, allowing smooth transitions between other building elements.



SRS 65

FEATURES & BENEFITS

- Available to standard factory lengths up to 32m
- Corrosion-resistant, long-lasting, durable aluminum substrate
- The 65mm machine-sealed ribs strengthen the overall panel structure and provide an impenetrable weather barrier against rain, wind, snow and ice
- Concealed floating clip attachments, available in a variety of configurations to meet any substrate conditions, eliminate penetrating fasteners at structural supports and side laps
- Virtually maintenance free except for annual inspection to ensure free drainage and proper functioning of flashing
- While the minimum recommended slope is 4.2%, shallower slopes have been used successfully without any compromise of watertight performance

DESCRIPTION

Standing seam metal roof system

SUBSTRATES

- High-strength aluminum alloy

GAGES

- 1.2mm, .90mm and .75mm
- Optional 1.2mm gage available with .90mm gage battens

PANEL WIDTH

- 305mm, 406mm and 457mm

PANEL LENGTH

- Factory-formed panel lengths to 32m

PANEL HEIGHT

- 65mm nominal seam height

SLOPE

- 2% minimum

COATINGS & COLORS

- See charts on pages 46-51.

TESTING

- Air Permeability classification: Class 4
- Watertightness classification Class 5 (2.0 kPa)
- Resistance to wind load classification: Class 5

SRS 65 CURVED*

DESCRIPTION

- High-strength 3004 alloy 3/4 hard aluminum for structural performance
- 65mm high, mechanically crimped seams for weather tightness and wind-uplift resistance
- Natural smooth curved radius: 50mm

CONVEX RADIUS

- Steel panel: minimum 11m
- Aluminum panel: minimum 8m

CONCAVE RADIUS

- Steel panel: minimum 11m
- Aluminum panel: minimum 8m

*For material thickness and intensity of curved panel, please consult CENTRIA's technical department.

SR65 TAPERED**

DESCRIPTION

- This tapered roof panel can be designed by the geometry/shape of the building, including slope, length, etc.

Two Ends of the Tapered Panel

- The minimum width of narrow end: 200mm
- The maximum width of wide end: 500 mm
- Length in factory-formed: standard 12m
- Site-formed length: no limit

**Special length according to this site condition and installation condition.



SRS 65 CURVED: STRAIGHT



SRS 65 CURVED: CONVEX



SRS 65 CURVED: CONCAVE



SRS 65 TAPERED: STRAIGHT



SRS 65 TAPERED: CONVEX

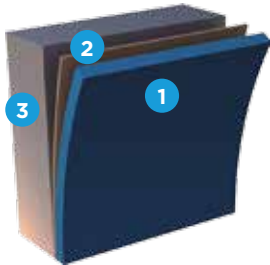


SRS 65 TAPERED: CONCAVE



COATING SYSTEMS & SUBSTRATES

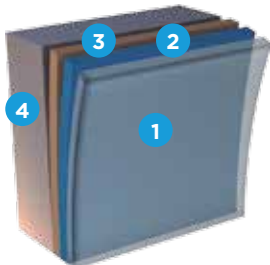
CENTRIA's coating systems produce intensely hued, uniquely textured metal walls and roofs that offer the best in performance to meet the most challenging environmental conditions.



FLUOROFINISH™™

A Kynar 500® or Hylar 5000® coating that provides good durability.

- 1 20 micron nominal Color Coat
- 2 5 micron nominal Primer
- 3 Substrate



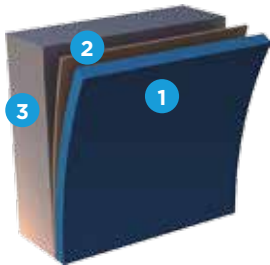
DURAGARD® PLUS

A premium, high-build architectural coating that provides the ultimate in color retention and fade resistance.

- 1 20 micron nominal Polyvinylidene Fluoride Clear Coat*
- 2 20 micron nominal Polyvinylidene Fluoride Color Coat*
- 3 20 micron nominal Primer
- 4 Substrate

DURAGARD®

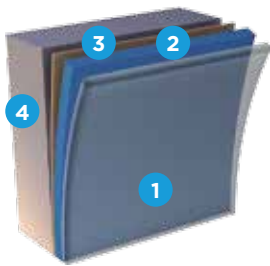
20 micron nominal Polyvinylidene Fluoride Color Coat*
20 micron nominal Primer



SUNDANCE MICA® 2-COAT FINISH

A high performance PVDF coating that provides good durability.

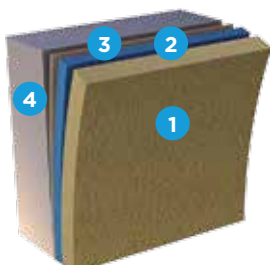
- 1 20 micron nominal Color Coat
- 2 5 micron nominal Primer
- 3 Substrate



SUNDANCE AM — ALUMINIUM METALLIC 3-COAT FINISH

A quality, durable coating that provides the iridescence and reflectivity of a metallic surface.

- 1 13 micron nominal Polyvinylidene Fluoride Clear Coat*
- 2 20 micron nominal Polyvinylidene Fluoride Color Coat*
- 3 5 micron nominal Primer
- 4 Substrate



DURACAST® TEXTURED FINISH SYSTEM**

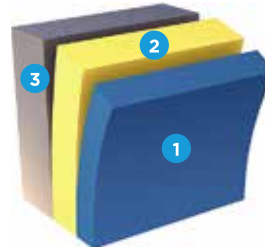
Factory-applied coating with natural aggregate matrix providing the look and feel of precast. Available exclusively for Formawall Dimension Series, Formawall Graphix Series and Versawall panels.

- 1 Acrylic and Natural Aggregate Matrix
- 2 20 micron nominal Polyester
- 3 5 micron nominal Primer
- 4 Substrate

VERSACOR® ULTRA

A premium, high-build, multi-layer coating for applications where corrosion and abrasion resistance is more important. Versacor® Ultra coatings provide a high build, 76 micron thick, Versacor Barrier Coat Primer over the metal substrate and several topcoat finish combinations to achieve superior performance against corrosion and abrasion.

Versacor Ultra PF and MX are excellent coatings for corrosive architectural applications. These coatings consist of a 76 micron thick Versacor Ultra Barrier Coat Primer and 20 micron thick PVDF top coat. Versacor Ultra PF has a solid color PVDF top coat. Versacor Ultra MX has a PVDF top coat with mica providing a pearlescent appearance.



- 1 20 micron nominal PVDF Color Coat*
- 2 76 micron nominal Versacor Ultra Barrier Coat Primer
- 3 Substrate

Versacor Ultra TF and HF

combine a 76 micron thick Versacor Ultra Barrier Coat with a Urethane top coat. This coating merges the superior corrosion resistance of the Versacor Ultra Barrier Coat with the durability of a Urethane finish. The Urethane top coat ranges from 38 micron thick on Versacor Ultra TF to 76 micron thick on Versacor Ultra HF, making it CENTRIA's highest performing corrosion resistant coating.



- 1 38 micron or 76 micron nominal Urethane Coat
- 2 76 micron nominal Versacor Ultra Barrier Coat Primer
- 3 Substrate

WHAT IS REVERSE SIDE COATING PROTECTION?

On CENTRIA Profile Series Products with a Versacor Ultra Coating System, a Versacor Ultra Barrier Coat is applied to the interior side of the metal substrate. A standard washcoat is applied over the barrier coat and other top coats are available, such as PVDF, Urethane or Polyester. This additional coating provides superior protection against corrosion from the interior and at lap conditions.

AVAILABLE SUBSTRATES

- Standard Z275 hot-dip galvanized steel conforming to ASTM A924 and ASTM A653 structural quality
- Galvalume® steel, unpainted hot-dip coated with aluminum-zinc alloy conforming to ASTM A924 and ASTM A792
- Stainless Steel**, Type 304 AISI architectural grade alloy; austenitic, non-magnetic, non-glare surface; slight variation in surface finish
- Aluminum Alloy 3003 or 5052 and for standing seam roof panels, 3004**, available in smooth surface as a substrate
- Galvalume and stainless steel not available with Versacor Ultra

* Polyvinylidene Fluoride (PVDF) coat contains 70% Kynar 500 or Hylar 5000 resin. Kynar 500 is a Reg. TM of Arkema, Inc. Corporation, Hylar 5000 is a Reg. TM of Solvay Solexix, Inc. Galvalume is a Reg. TM of BIEC International, Inc.

** Subject to minimum quantity requirements.

PRODUCT FINISH AVAILABILITY

PANELS	FINISHES											SUBSTRATES		
	Fluorofinish	Duragard	Duragard Plus	Sundance Mica	Sundance AM-Metallic	Duracast	Versacor Ultra PF, MX, TF, HF	Kolorshift	Allusion	Allura	ZZ75 Galvanized	Aluminum	Stainless Steel	Zinc
FW Dimension Series	X	X	X	X	X	X	X	X	X	X	X	X ¹	X ¹	
FW Graphix Series	X	X	X	X	X	X	X	X	X	X	X	X ¹		
Formavue	X	X	X	X	X			X	X	X		X		
FWDS Louvers	X	X	X	X	X			X	X	X		X		
FWDS Sunshades	X	X	X	X	X			X	X	X		X		
Versapanel	X	X	X	X	X	X	X	X	X	X	X			
Versawall	X	X	X	X	X	X	X	X	X	X	X			
FormaBond	X			X	X			X	X ²			X		
FormaBond II	X			X	X							X		X
Concept Series	X	X	X	X	X		X	X	X	X	X	X	X	X
IW Series	X	X	X	X	X		X	X	X	X	X	X	X	X
CASCADE	X	X	X	X	X		X	X	X	X	X	X	X	X
EcoScreen	X	X	X	X	X					X		X	X	
BR5-36	X	X	X	X	X		X	X	X	X	X	X	X	
Econolap 1/2"	X	X	X	X	X		X	X	X	X	X	X	X	
Econolap 3/4"	X	X	X	X	X		X	X	X	X	X	X	X	
MR3-36	X	X	X	X	X		X	X	X	X	X	X	X	
Style-Rib	X	X	X	X	X		X	X	X	X	X	X	X	
Super-Rib	X	X	X	X	X		X	X	X	X	X	X		
TR4-36	X	X	X	X	X		X	X	X	X	X	X	X	
Profile Louvers	X	X	X	X	X		X	X	X	X	X			
Liner Panels	X	X	X	X	X		X	X	X	X	X			
VersaShield	X	X	X	X	X		X	X	X	X	X	X		
ADP-100	X			X			X	X	X		X			
ADP-100B	X			X			X	X	X		X			
ADP-100C	X			X			X	X	X		X			
SDP-175	X			X	X		X	X	X		X			
SDP-200	X			X	X		X	X	X		X			
SRS 3	X	X	X	X	X	X	X	X	X	X	X	X	X	
SRS 3 Curved	X	X	X	X	X	X	X	X	X	X	X	X	X	
SRS 360	X	X	X	X	X	X	X	X	X	X	X	X	X	
SRS 65	X	X	X								X	X	X	

Certain panel profiles and options may not be available in all finish and gage combinations. Contact CENTRIA for availability.

¹Stainless and aluminum are available for face elements only and not liner elements.

²Max. module of 137.2mm

COLORS



PRISMATIC™ SERIES COLORS—FLUOROFINISH, DURAGARD AND DURAGARD PLUS

				
179 Regal White	996 Crushed Ice	993 Off-White †	995 Cambridge White	310 Bone White
				
994 Colonial White	5012 Marble	992 Lee Ivory †	133 Sandstone	1760 Limestone †
				
142 Surrey Beige †	9910 Light Seawolf †	9911 Pebble	997 Prism Yellow	5444 Aged Copper
				
977 Moss	9933 Cypress Olive	978 Hunter Green	183 Evergreen	9932 Hartford Green
				
177 Slate Blue	9926 Arabian Blue	974 Teal Blue	9928 Cherokee Blue	200 Deep Blue Sea
				
9930 Night Horizon	9923 Granite	971 Chromium Gray		
				
9917 Light Gray †	9918 Dove Gray †	9919 Fashion Gray		
				
181 Slate Gray †	9922 Steel Gray	9921 Charcoal Gray		
				
9914 Midnight Bronze	154 Dark Bronze	9916 Rich Black		
				
9912 Sage Brown	1243 Mocha	9937 Mauve		
				
156 Colonial Red	999 Aspen Gold	5913 Polyester Artic Ice Interior Use Only		

Unless specified otherwise, CENTRIA will provide a standard backer coat on the reverse side of single skin panels. Color may vary.

Polyester Arctic Ice is the standard finish offering for the interior surfaces of foam panels. Other finishes available upon request.

† Standard Duracast finish color. Consult CENTRIA for custom colors.

Colors shown are for preliminary selection only. Printed colors can vary from actual painted material.

Contact CENTRIA for painted metal samples before final selection.

NOTE: Because of the differences in the formulation and application properties of spray-applied coatings versus coil coatings, a slight color variation is likely to occur when matching coatings of these different types.

COLORS

SUNDANCE™ SERIES COLORS

Sundance Mica 2-coat



9946 Silversmith



9947 Gray Velvet



9948 Champagne Bronze



9949 Copper



9987 Bronze II



9951 Champagne Pearl



9989 Platinum



9988 Brick II



9954 Jade



9955 Blue

Sundance AM Aluminum Metallic 3-coat



9956 XL Rosalind Rose



9957 XL Silver



9958 XL Champagne Gold



9959 XL Light Bronze



9960 XL Medium Gray



9962 XL Silver Gray



9963 XL Copper Metallic



9964 XL Medium Bronze



9965 XL Dark Bronze



9967 XL Pewter

Custom colors may require an additional clear and/or barrier coat.
Consult CENTRIA for details.

DURACAST®



Off-White



Limestone



Lee Ivory



Surrey Beige



Light Seawolf



Dove Gray



Light Gray



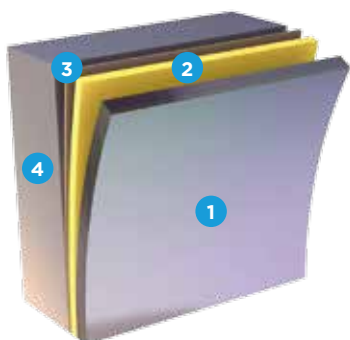
Slate Gray

NOTE: Galvalume®, Stainless and Aluminum may not be available for all product profiles or coating systems. Consult CENTRIA sales. Galvalume offers improved heat resistance only when used unpainted.

KOLORSHIFT™ SERIES

KolorShift Series takes coating innovation and design inspiration to the next level by making it possible to create metal walls that feature a continuous iridescent color gradient depending on the viewing angle or direction of sunlight.

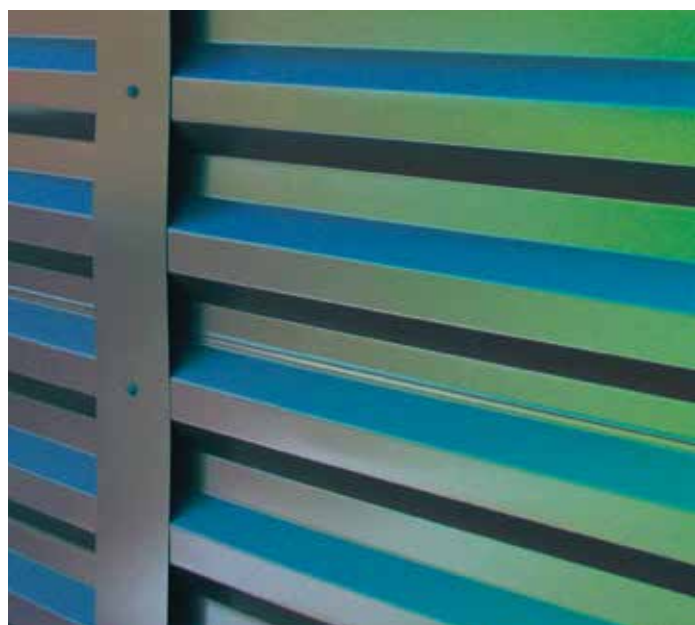
KolorShift Series paints are formulated as a polyvinylidene fluoride (PVDF) coating system with 70% Kynar 500®/Hylar 5000® resins, which provide lasting durability. They are available with a standard 20-year warranty.



KOLORSHIFT

An iridescent polyvinylidene (PVDF) architectural coating

- 1 20 micron nominal PVDF Color Coat
- 2 12 micron Polyester Base Coat
- 3 5 micron Polyester Primer
- 4 Substrate



Kynar 500 is a Registered Trademark of Atofina Chemicals, Inc.
Hylar 5000 is a Registered Trademark of Solvay Solvents, Inc.

valspar

BASE COLOR FLOP COLOR



731 Hemlock



732 Dusty Rose



733 Green Shimmer



734 Purple Rain

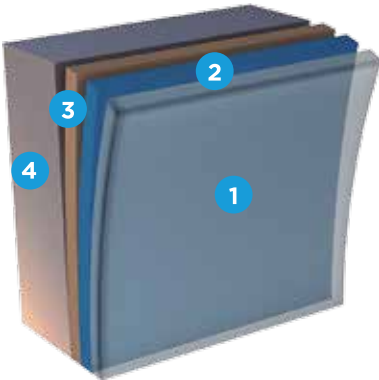


735 Lightning Storm

Kolorshift paints are applied by coil coating to provide consistency of color. Spray coating matches are not available. It is recommended that trim required for Kolorshift coated projects use brake-formed trim or a complimentary color in a standard PVDF for extrusions. Contact CENTRIA for availability of MicroSeam® corners with a Kolorshift finish.

ALLUSION™

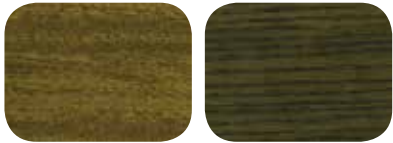
Using an innovative high performance print coating technology, the Allusion pre-finished decorative paint system accurately and cost-effectively simulates expensive natural finishes.



ALLUSION

A pre-coated finish system using polyvinylidene (PVDF) print pattern colors

- 1 11 micron nominal PVDF Clear Top Coat 05 mil nominal PVDF ink
- 2 16 micron nominal Color Base Coat (also acts as primer)
- 3 Metal Substrate



761 Light Oak

762 Dark Oak



763 Rust

764 Slate



765 Antique Bronze

766 Blue Zinc



767 Red Zinc

768 Crystal Zinc

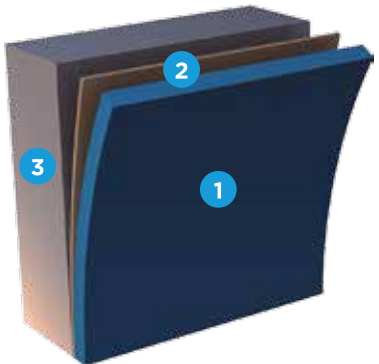


769 Green Zinc

ALLURA™

Allura is a premium PVDF coating that provides an interesting aesthetic option with an innovative matte, low-gloss finish, combined with a subtle, aggregate texture for unique designs.

Allura offers excellent UV resistance and exceptional color retention, along with resistance to chalking and chemical degradation. The Terra Cotta Color Series features five earth tone colors that perfectly match the color and texture of terra cotta.



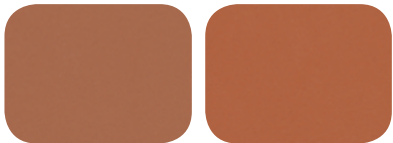
ALLURA

- 1 20 micron color coat
- 2 5 micron nominal primer
- 3 Metal Substrate



781 Adobe

782 Lava Rock



783 Sienna

784 Clay



785 Sedona



CENTRIA

CENTRIA International

CENTRIA.com

1.800.759.7474

1005 Beaver Grade Road
Moon Township, PA 15108-2944

Phone: 412.299.8000
Fax: 412.299.8317
Office of Business Development
Phone: 860.490.2670

Connect
with us:



AMERICAS

Phone: +1 412.299.8000

Fax: +1 412.299.8053

ARABIAN GULF/DUBAI

UNITED ARAB EMIRATES

Phone: 971.4.339.4885

Fax: 971.4.339.4886

BEIJING

Phone: 86.10.6310.6811

Fax: 86.10.6310.6711

CHONGQING

Phone: 86.23.6373.6875

Fax: 86.23.6370.7162

JAKARTA

Phone: 6221.633.5477

Fax: 6221.633.5478

SHANGHAI

Phone: 86.21.5831.2718

Fax: 86.21.5831.2311

SINGAPORE

Phone: 65.6227.6838

Fax: 65.6227.6535

UNITED KINGDOM

Phone: 44(0).1684.882530

Fax: 44(0).1684.856849

Due to CENTRIA's policy of continuous improvement, we reserve the right to change, discontinue or modify our products, specifications and designs without notice and without incurring obligations.

