

PICK & CARRY



**NO OUTRIGGERS! - THE IDEAL LIFTING SOLUTION
FOR CONFINED WORKING AREAS**



GGR
GALIZIA
PICK & CARRY CRANES

GGR

GALIZIA

PICK & CARRY CRANES

The GGR Galizia range of pick and carry cranes, are the latest lifting solution from GGR UNIC. The new range comes with lifting capacities ranging from 2t to 25t and a maximum working height of 15 metres. The GGR Galizia cranes do not require outriggers, allowing you to pick, carry and place heavy items.

The cranes are highly manoeuvrable as they are equipped with 180° rear-wheel steering system; making them ideally suited to a variety of **applications such as machinery removal and relocations, general industrial lifting and construction site operations.** They are also suited to environments such as workshops, marinas, factories, aircraft hangars where a forklift cannot provide the capacity or reach needed.

All GGR Galizia Pick & Carry cranes are battery operated as standard, with a diesel engine as an optional extra on certain models. The cranes also feature a digital safe load indicator, audio-visual overload alarm, reversing alarm, overload warning lamps, and work lamp as standard. Additional equipment on other models includes electromagnetic brakes, full winch system and hydraulically extending searcher hooks.

The GGR Galizia range is quiet, long lasting and user-friendly, offering incredible versatility, plus an optimal combination of compactness and power for picking, carrying and placing loads in restricted access and other industrial environments.

The GGR Galizia team can assist with all technical issues and offer accredited training courses, including the universally recognised A66 CPCS qualification. GGR Galizia's training and technical assistance service will ensure users can plan and operate safely in all environments and applications.

www.ggrgalizia.co.uk

G20



Capacity	2.0t x 0.5m
Max working radius	3.5m
Max lifting height	5.3m
Weight	2,000kg

G35



Capacity	3.5t x 0.4m
Max working radius	3.4m
Max lifting height	6m
Weight	2,900kg

G50



Capacity	5.0t x 0.6m
Max working radius	2.7m
Max lifting height	5m
Weight	3,900kg

G70



Capacity	7.0t x 0.8m
Max working radius	3.8m
Max lifting height	6m
Weight	6,100kg

G90



Capacity	9.0t x 0.8m
Max working radius	4.3m
Max lifting height	6.8m
Weight	9,800kg

G100



Capacity	10.0t x 1m
Max working radius	5.2m
Max lifting height	7.7m
Weight	9,800kg

G120



Capacity	12t x 1m
Max working radius	5.2m
Max lifting height	7.7m
Weight	10,200kg

G150



Capacity	15t x 0.75m
Max working radius	6m
Max lifting height	8.5m
Weight	12,800kg

GF200



Capacity	20t x 0.8m
Max working radius	6.1m
Max lifting height	9m
Weight	19,000kg

GF250



Capacity	25t x 1.4m
Max working radius	8.4m
Max lifting height	11.8m
Weight	26,000kg

G20

(2.0t x 0.5m)



Optimal combination of compactness and power

With a capacity of 2t and a lifting height of over 5m, the pedestrian controlled G20 offers an optimal combination of compactness and power for picking, carrying and placing loads in restricted access environments.

Technical Specifications

Capacity	2.0t x 0.5m
Max working radius	3.5m
Max lifting height	5.3m
Chassis dimensions	2025 (l) x 928 (w) x 1650 (h) mm
Weight	2,000kg
Boom length	2.15 - 5.15m
Boom type	1 section hydraulic, 1 section manual, box boom
Derricking angle	-8° to 50°
Steering	rear hydraulic 180°
Tyres	1 solid rear, 2 solid front
Power source	24v rechargeable battery
Travel speed	3km/h

Standard Equipment

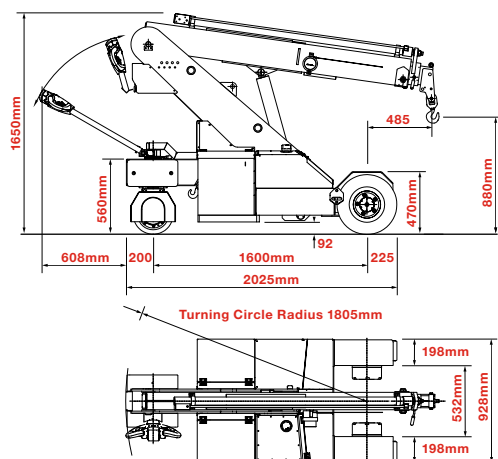
Digital safe load indicator, audio-visual overload alarm, reversing alarm, overload warning lamps, work lamp

Optional Equipment

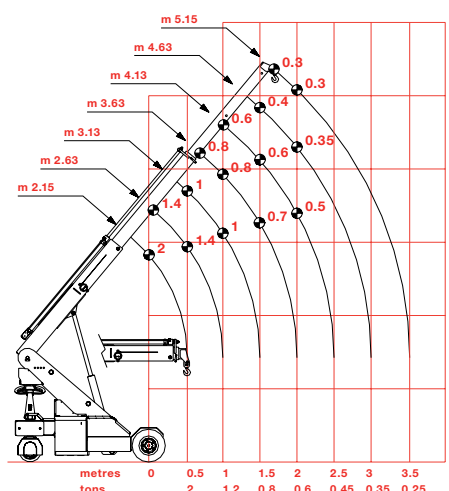
Low marking tyres, full winch system, cable remote control, electromagnetic front brakes



Elevations



Rated Loads



G35

(3.5t x 0.4m)

Powered by a 48v battery, the G35 boasts a 3.5t of lifting capacity and a fully featured operator's cab. The optional searcher hook pushes maximum lifting height to 6.5m.



The optional searcher hook increases the maximum lifting height to 6.5m

Technical Specifications

Capacity	3.5t x 0.4m
Max height	6.5m (with searcher hook)
Max working radius	3.4m
Max lifting height	6m
Chassis dimensions	2600 (l) x 1470 (w) x 1900 (h) mm
Weight	2,900kg
Boom length	2.5 - 5.5m
Boom type	2 section hydraulic, 1 section manual, box boom
Derricking angle	-9° to 54°
Steering	rear hydraulic 180°
Tyres	1 solid rear, 2 solid front
Electric power	4.5kW
Power source	48v rechargeable battery
Travel speed	7km/h

Standard Equipment

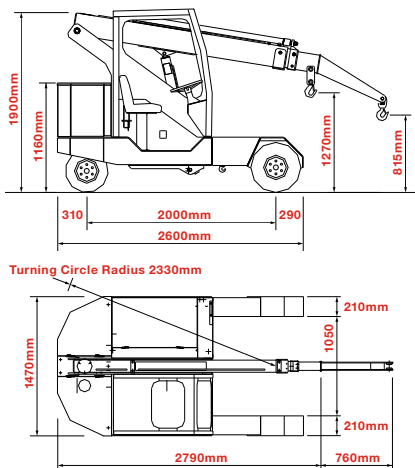
Digital safe load indicator, audio-visual overload alarm, reversing alarm, seat and seatbelt sensor, overload warning lamps

Optional Equipment

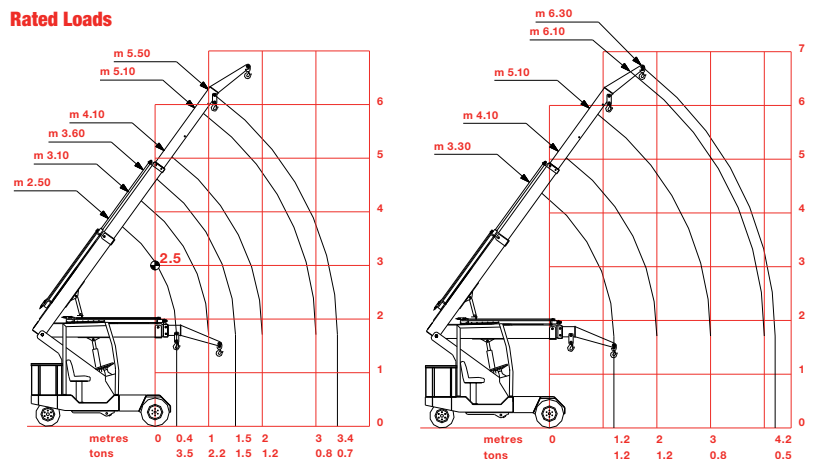
Searcher hook, low marking tyres, full winch system



Elevations



Rated Loads



SEARCHER HOOK - Capacity 1200kg, length 0.8m

G50

(5.0t x 0.6m)



**A choice of diesel engines,
 or battery powered motors**

A mid-capacity and very versatile crane which can lift and carry up to 5t yet has a weight of only 3900kg. Powered by an electric battery or a diesel engine.

Technical Specifications

Capacity	5.0t x 0.6m
Max height	6.4m (with searcher hook)
Max working radius	2.7m
Max lifting height	5m
Chassis dimensions	2940 (l) x 1650 (w) x 2005 (h) mm
Weight	3,900kg
Boom length	2.95 - 5.05m
Boom type	2 section hydraulic, box boom
Derricking angle	-10° to 46°
Steering	rear hydraulic 180°
Tyres	1 solid rear, 2 solid front
Diesel engine option	Yanmar 3 cylinder diesel
Fuel	diesel
Max output	23kW
Tank capacity	30 litres
Travel speed	10km/h
Electric power option	6kW
Power source	48v rechargeable battery
Travel speed	7km/h



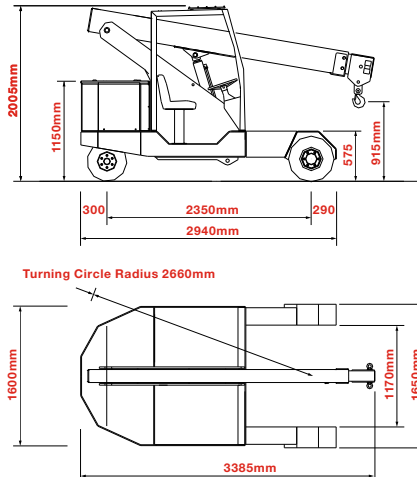
Standard Equipment

Digital safe load indicator, audio-visual overload alarm, reversing alarm, seat and seatbelt sensor, overload warning lamps

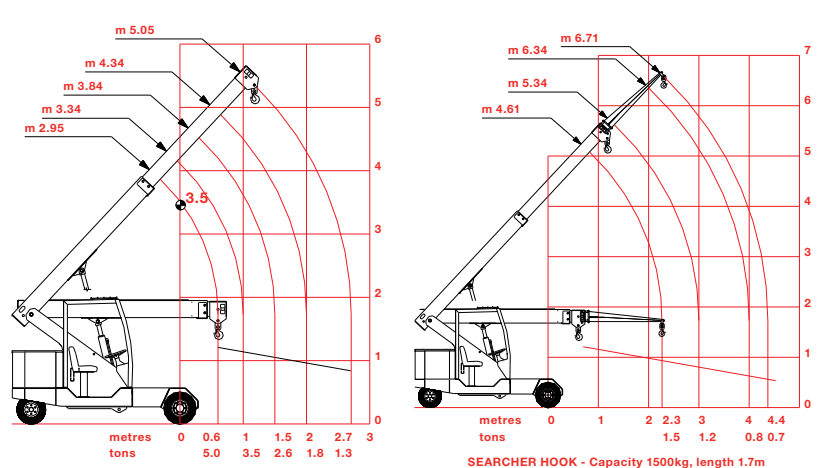
Optional Equipment

Searcher hook, low marking tyres, full winch system

Elevations



Rated Loads



G70

(7.0t x 0.8m)



All Galizia models incorporate a full digital safe load indicator

Like all Galizia models, the G70 incorporates a full digital safe load indicator with display. A joystick controlled proportional distributor allows operation of all boom functions.

Technical Specifications

Capacity	7.0t x 0.8m
Max height	7.4m (with searcher hook)
Max working radius	3.8m
Max lifting height	6m
Chassis dimensions	3235 (l) x 1850 (w) x 2070 (h) mm
Weight	6,100kg
Boom length	3.38 - 6.38m
Boom type	3 section hydraulic, box boom
Derricking angle	-8° to 45°
Steering	rear hydraulic 180°
Tyres	2 solid rear, 4 solid front
Diesel engine option	Yanmar 3 cylinder
Fuel	diesel
Max output	27kW
Tank capacity	50 litres
Travel speed	12km/h
Electric power option	8kW
Power source	48v rechargeable battery
Travel speed	7km/h



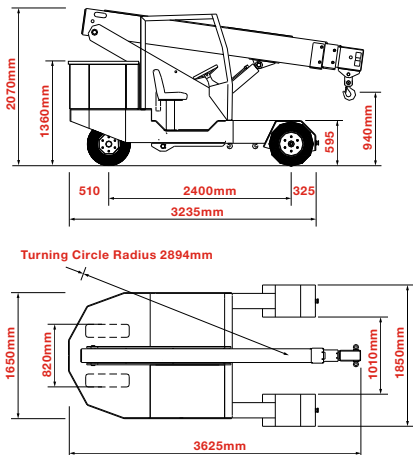
Standard Equipment

Digital safe load indicator with display, proportional distributor joystick-controlled, audio-visual overload alarm, reversing alarm, seat and seatbelt sensor, overload warning lamps

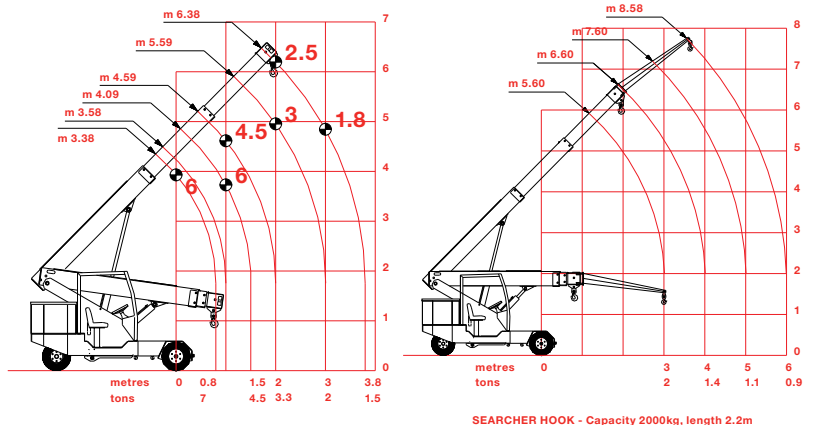
Optional Equipment

Searcher hook, hydraulically extending searcher hook, full winch system, auto-levelling telehandler forks, low marking tyres

Elevations



Rated Loads



G90
 (9.0t x 0.8m)



**A choice of diesel engines,
 or battery powered motors**

The G90 is the mid-range crane with an excellent capacity and lifting height of 6.8m.

Technical Specifications

Capacity	9.0t x 0.8m
Max height	8.5m (with searcher hook)
Max working radius	4.3m
Max lifting height	6.8m
Chassis dimensions	3570 (l) x 1950 (w) x 2135 (h) mm
Weight	9,800kg
Boom length	3.09 - 8.32m
Boom type	3 section hydraulic, box boom
Derricking angle	-6° to 49°
Steering	rear hydraulic 180°
Tyres	2 solid rear, 4 solid front
Diesel engine option	VM 4 cylinder or Yanmar diesel
Fuel	diesel
Max output	51kW
Tank capacity	80 litres
Travel speed	12km/h
Electric power option	12kW
Power source	80v rechargeable battery
Travel speed	7km/h



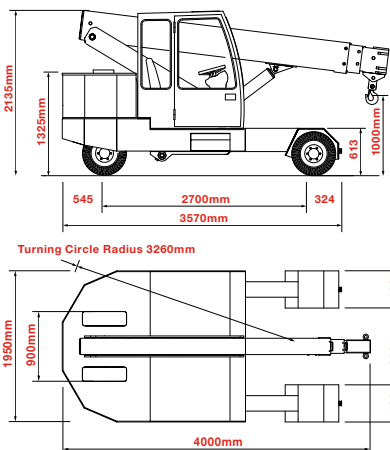
Standard Equipment

Digital safe load indicator with display, proportional distributor joystick-controlled, audio-visual overload alarm, reversing alarm, seat and seatbelt sensor, overload warning lamps

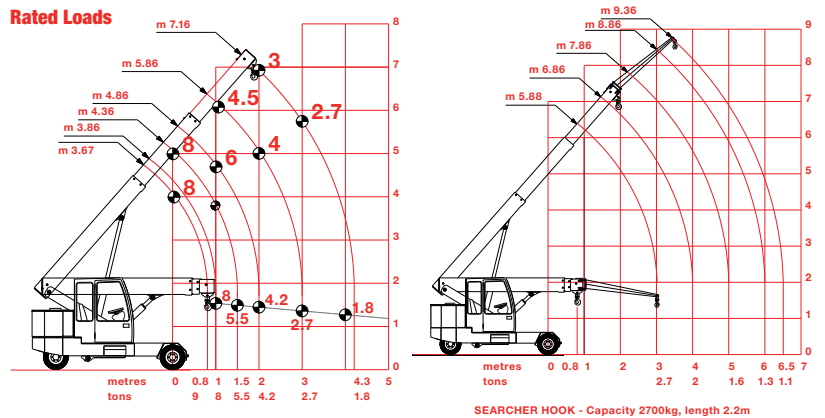
Optional Equipment

Searcher hook, hydraulically extending searcher hook, full winch system, auto-levelling telehandler forks, low marking tyres

Elevations



Rated Loads



G100

(10.0t x 1m)



**10t of lifting capacity with
 an extremely compact chassis
 only 2050mm wide**

The G100 has a maximum lifting height when fitted with its optional searcher hook of over 10m.

Technical Specifications

Capacity	10.0t x 1m
Max height	10.6m (with searcher hook)
Max working radius	5.2m
Max lifting height	7.7m
Dimensions	4040 (l) x 2100 (w) x 2400 (h) mm
Weight	9,800kg
Boom length	3.09 - 8.32m
Boom type	3 section hydraulic, box boom
Derricking angle	-6° to 49°
Steering	rear hydraulic 180°
Tyres	2 solid rear, 4 solid front
Diesel engine option	VM 4 cylinder or Yanmar
Fuel	diesel
Max output	51kW
Tank capacity	80 litres
Travel speed	12km/h
Electric power option	12kW
Power source	80v rechargeable battery
Travel speed	7km/h



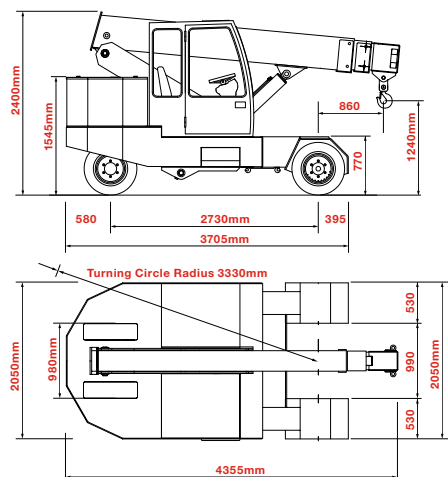
Standard Equipment

Digital safe load indicator with display, proportional distributor joystick-controlled, audio-visual overload alarm, reversing alarm, seat and seatbelt sensor, overload warning lamps

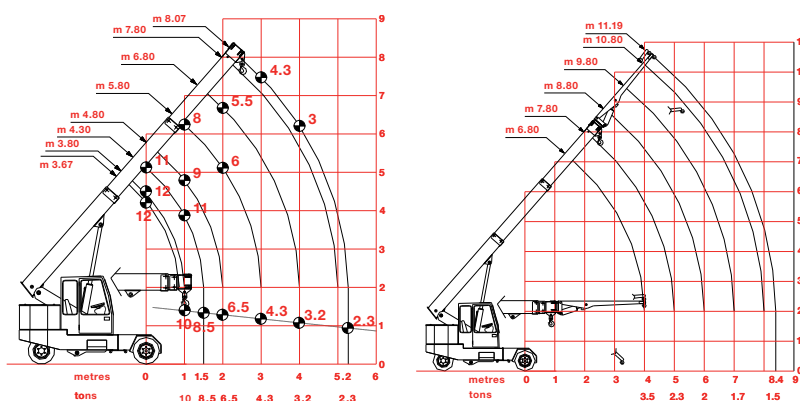
Optional Equipment

Searcher hook, hydraulically extending searcher hook, full winch system, auto-levelling telehandler forks, low marking tyres

Elevations



Rated Loads



SEARCHER HOOK - Capacity 3500kg, length 3.14m

G120

(12.0t x 1m)



**12t of lifting capacity with
 an extremely compact chassis
 only 2050mm wide**

The G120 adds another 2t of lifting capacity. Maximum boom length (without the optional searcher hook) is 8.07m.

Technical Specifications

Capacity	12t x 1m
Max height	10.5m (with searcher hook)
Max working radius	5.2m
Max lifting height	7.7m
Chassis dimensions	3705 (l) x 2050 (w) x 2400 (h) mm
Weight	10,200kg
Boom length	3.67 - 8.07m
Boom type	3 section hydraulic, box boom
Derricking angle	-6° to 49°
Steering	rear hydraulic 180°
Tyres	2 solid rear, 4 solid front
Diesel engine option	VM 4 cylinder or Yanmar diesel
Fuel	diesel
Max output	51kW
Tank capacity	80 litres
Travel speed	12km/h
Electric power option	12kW
Power source	80v rechargeable battery
Travel speed	7km/h



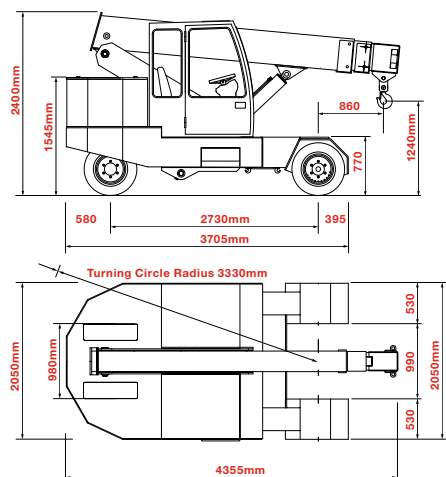
Standard Equipment

Digital safe load indicator with display, proportional distributor joystick-controlled, audio-visual overload alarm, reversing alarm, seat and seatbelt sensor, overload warning lamps

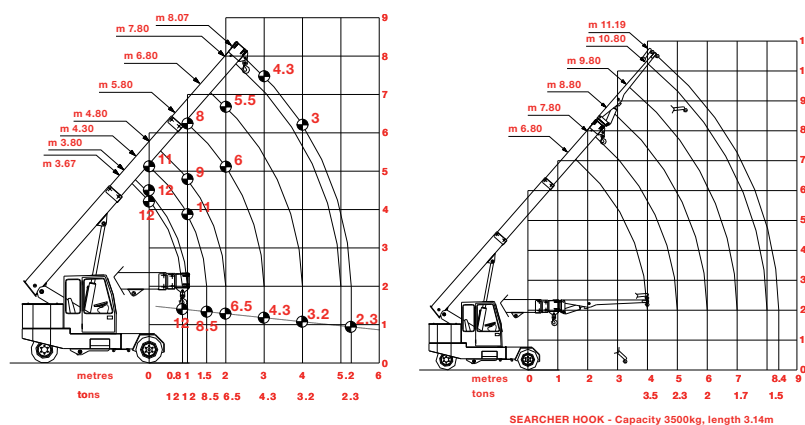
Optional Equipment

Searcher hook, hydraulically extending searcher hook, full winch system, auto-levelling telehandler forks, low marking tyres

Elevations



Rated Loads



G150

(15.0t x 0.75m)

The G150 can lift 15t at 0.75m while still boasting the flexibility of 180° rear hydraulic turning.



All Galizia models incorporate a full digital safe load indicator

Technical Specifications

Capacity	15t x 0.75m
Max height	11.4m (with searcher hook)
Max working radius	6m
Max lifting height	8.5m
Chassis dimensions	4375 (l) x 2180 (w) x 2470 (h) mm
Weight	12,800kg
Boom length	4.3 - 9.49m
Boom type	3 section hydraulic, box boom
Derricking angle	-5° to 47°
Steering	rear hydraulic 180°
Tyres	2 solid rear, 4 solid front
Diesel engine option	VM 4 cylinder Turbo or Yanmar
Fuel	diesel
Max output	62kW
Tank capacity	80 litres
Travel speed	12km/h
Electric power option	16kW
Power source	80v rechargeable battery
Travel speed	7km/h



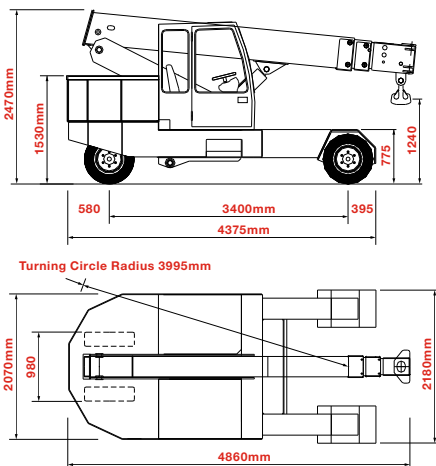
Standard Equipment

Digital safe load indicator with display, proportional distributor joystick-controlled, audio-visual overload alarm, reversing alarm, seat and seatbelt sensor, overload warning lamps

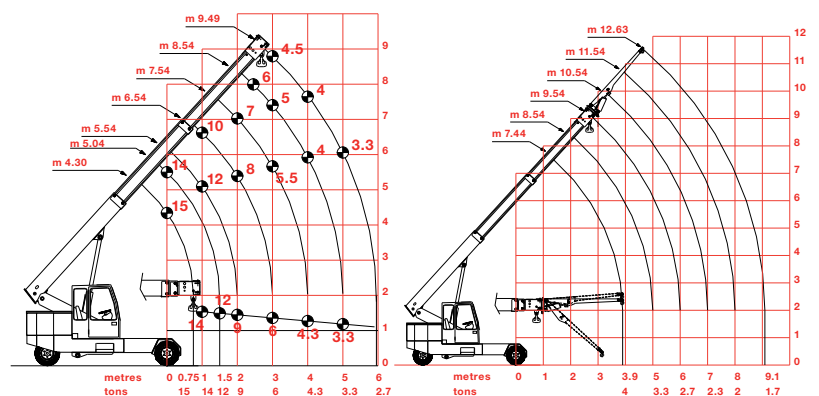
Optional Equipment

Searcher hook, hydraulically extending searcher hook, full winch system, auto-levelling telehandler forks, low marking tyres

Elevations



Rated Loads



GF200

(20.0t x 0.8m)



20t of lifting capacity with an extremely compact chassis only 2295mm wide and 4500mm long

The highest capacity Galizia rear wheel steered crane, the GF200 can lift 20t at 0.8m while still boasting the flexibility of 180° rear hydraulic turning.

Technical Specifications

Capacity	20t x 0.8m
Max height	11.4m (with searcher hook)
Max working radius	6.1m
Max lifting height	9m
Chassis dimensions	4500 (l) x 2295 (w) x 2095 (h) mm
Weight	19,000kg
Boom length	4.23 - 9.43m
Boom type	3 section hydraulic, box boom
Derricking angle	-5° to 55°
Steering	rear hydraulic 180°
Tyres	2 solid rear, 4 solid front
Electric power option	16kW + 16kW (2 motors on front axles)
Power source	80v rechargeable battery
Travel speed	7km/h

Standard Equipment

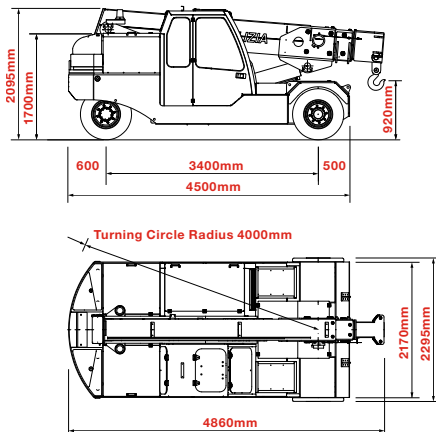
Digital safe load indicator with display, proportional distributor joystick-controlled, audio-visual overload alarm, reversing alarm, seat and seatbelt sensor, overload warning lamps

Optional Equipment

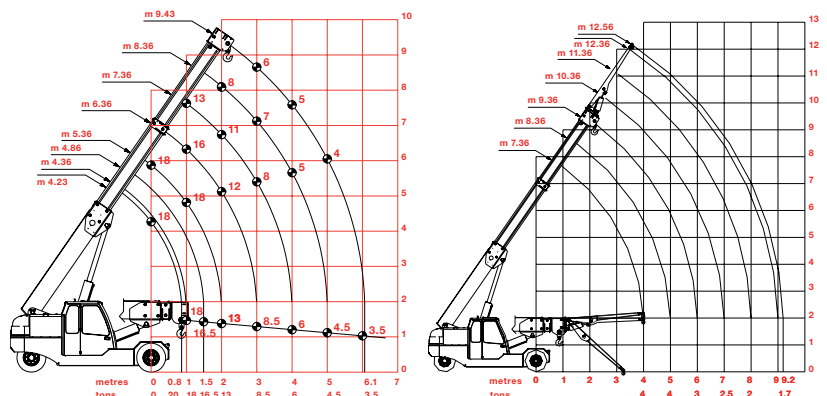
Searcher hook, hydraulically extending searcher hook, full winch system, auto-levelling telehandler forks, low marking tyres



Elevations



Rated Loads



GF250

(25.0t x 1.4m)

A massive 25t capacity of battery powered lifting power for heavy duty flexible lifting



The GF250 features front wheel hydraulic steering and a maximum lifting height of 15m when fitted with its optional searcher hook.

Technical Specifications

Capacity	25t x 1.4m
Max height	15m (with searcher hook)
Max working radius	8.4m
Max lifting height	11.8m
Chassis dimensions	5360 (l) x 2420 (w) x 2550 (h) mm
Weight	26,000kg
Boom length	5.61 - 12.6m
Boom type	3 section hydraulic, box boom
Derricking angle	-5° to 55°
Steering	front hydraulic
Tyres	2 solid rear, 4 solid front
Electric power	30kW
Power source	96v rechargeable battery
Travel speed	6km/h



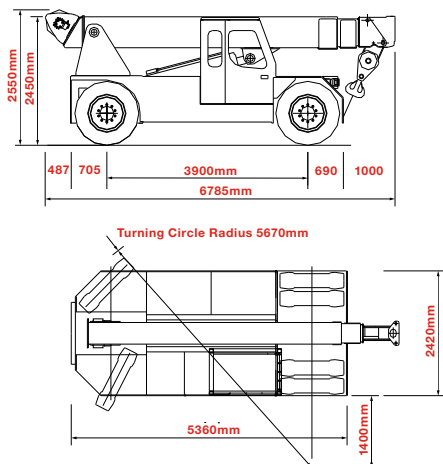
Standard Equipment

Digital safe load indicator with display, proportional distributor joystick-controlled, audio-visual overload alarm, reversing alarm, seat and seatbelt sensor, overload warning lamps

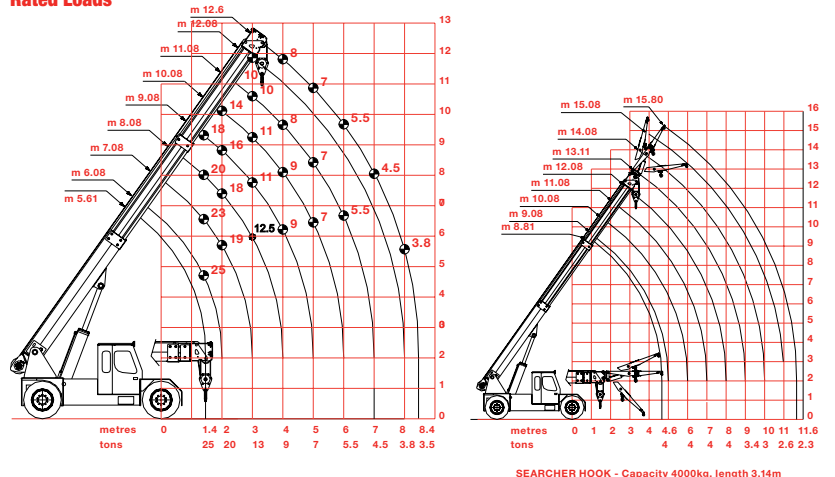
Optional Equipment

Full 6-fall winch system, hook block stop, radio remote control, searcher hook, hydraulically extending searcher hook, low marking tyres

Elevations



Rated Loads







GGR
GALIZIA
PICK & CARRY CRANES



South Units 8 - 11 Ridgeway
Drakes Drive
Long Crendon Industrial Estate
Long Crendon
Bucks HP18 9BF

Phone: +44 (0)1844 202 071
Fax: +44 (0)1844 202 075

Email: info@ggrgalizia.co.uk
Web: www.ggrgalizia.co.uk

North Presentation House
Broadgate
Broadway Business Park
Oldham
OL9 0JA

Phone: +44 (0)161 683 2580
Fax: +44 (0)161 683 4444

Email: info@ggrgalizia.co.uk
Web: www.ggrgalizia.co.uk