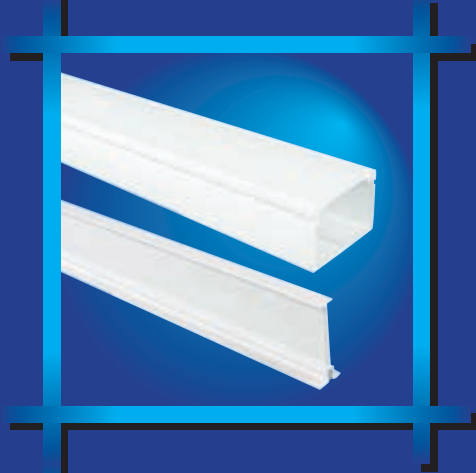


DECODUCT®

CABLE MANAGEMENT SYSTEMS



PERIMETER SYSTEMS



MINI - MAXI TRUNKING SYSTEM

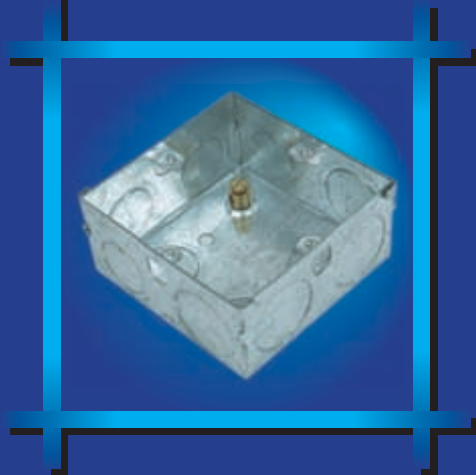
CONDUIT SYSTEMS



PANEL TRUNKING

CABLE PROTECTION SYSTEMS

METAL MOUNTING BOXES



INTERPLAST ELECTRICAL PRODUCTS





CONTENTS

PAGE

PERIMETER SYSTEMS - DADO, SKIRTING & COVING TRUNKING 4 - 19

MINI & MAXI TRUNKING SYSTEMS 20 - 29

CONDUIT SYSTEMS 30 - 49

PANEL TRUNKING 50 - 53

CABLE PROTECTION SYSTEMS 54 - 59

TECHNICAL SPECIFICATIONS 60 - 74

Decoduct



**MANUFACTURED IN ACCORDANCE WITH
BRITISH STANDARDS**

CODING SYSTEM FOR DADO TRUNKING

D P - 0

D : Decoduct

**P : Perimeter trunking with profile number code as
suffix**

e.g.

P1 : BCB (Bevelled top lid, centre lid, bevelled bottom lid)

P2 : BCA (Bevelled top lid, centre lid, angle bottom lid)

P3 : ACB (Angle top lid, centre lid, bevelled bottom lid)

P4 : ACA (Angle top lid, centre lid, angle bottom lid)

- : Accessory code, if any

e.g. : BU1 - Base Unit for Profile P1

BL1 - Bevelled Lid for Profile P1

FT2 - Flat Tee for Profile P2

IB3 - Internal Bend (set) for Profile P3

EC3 - End Cap (set) for Profile P3

0 : Size code as in catalogue

e.g. :

0 : 160 mm x 50 mm

Other sizes available on request

PERIMETER SYSTEMS





DECODECT®

CABLE MANAGEMENT SYSTEMS

DADO Trunking & Fittings Symphony



BASE

Item code	Standard packs	Bulk packs
DP1 BU1 0	2 x 2.9 Mtr	-



CHAMFERED LID (TOP)

Item code	Standard packs	Bulk packs
DP1 BL1 0	2 x 2.9 Mtr	-



CENTRE LID

Item code	Standard packs	Bulk packs
DP1 CL1 0	2 x 2.9 Mtr	-



CHAMFERED LID (BOTTOM)

Item code	Standard packs	Bulk packs
DP1 BL1 0	2 x 2.9 Mtr	-



INTERNAL BEND (Set)

Item code	Standard packs	Bulk packs
DP1 IB1	5 Sets	200 Sets

DADO Trunking & Fittings *Symphony*

Standard Size : 160 mm x 50 mm
 Standard Length: 2.9 metre. Alternative lengths can be supplied to order
 Standard Set : 3 pieces (for internal bend, external bend & Coupler)
 and a pair for end cap
 Standard Colour: White. Other finishes, designs and colours
 are available on request



EXTERNAL BEND (Set)

Item code	Standard packs	Bulk packs
DP1 EB1	5 Sets	130 Sets



COUPLER (Set)

Item code	Standard packs	Bulk packs
DP1 C1	5 Sets	200 Sets



END CAP L/R (Set)

Item code	Standard packs	Bulk packs
DP1 EC1L/R	5 Sets	200



FLAT ANGLE

Item code	Standard packs	Bulk packs
DP1 FA1	1 Set	-



FLAT TEE

Item code	Standard packs	Bulk packs
DP1 FT1	1 Set	-



DECODECT[®]

CABLE MANAGEMENT SYSTEMS

DADO Trunking & Fittings Signature



BASE

Item code	Standard packs	Bulk packs
DP2 BU2 0	2 x 2.9 Mtr	-



CHAMFERED LID (TOP)

Item code	Standard packs	Bulk packs
DP2 BL2 0	2 x 2.9 Mtr	-



CENTRE LID

Item code	Standard packs	Bulk packs
DP2 CL2 0	2 x 2.9 Mtr	-



ANGLE LID (BOTTOM)

Item code	Standard packs	Bulk packs
DP2 AL2 0	2 x 2.9 Mtr	-



INTERNAL BEND (Set)

Item code	Standard packs	Bulk packs
DP2 IB2	5 Sets	200 Sets

DADO Trunking & Fittings *Signature*

Standard Size : 160 mm x 50 mm
 Standard Length: 2.9 metre. Alternative lengths can be supplied to order
 Standard Set : 3 pieces (for internal bend, external bend & Coupler) and a pair for end cap
 Standard Colour: White. Other finishes, designs and colours are available on request



EXTERNAL BEND (Set)

Item code	Standard packs	Bulk packs
DP2 EB2	5 Sets	130 Sets



COUPLER (Set)

Item code	Standard packs	Bulk packs
DP2 C2	5 Sets	200 Sets



END CAP L/R (Set)

Item code	Standard packs	Bulk packs
DP2 EC2 L/R	5 Sets	200 Sets



FLAT ANGLE UP/DOWN

Item code	Standard packs	Bulk packs
DP2 FA2 U/D	1 Set	-



FLAT TEE UP/DOWN

Item code	Standard packs	Bulk packs
DP2 FT2 U/D	1 Set	-



DECODUCT®

CABLE MANAGEMENT SYSTEMS

DADO Trunking & Fittings Harmony



BASE

Item code	Standard packs	Bulk packs
DP3 BU3 0	2 x 2.9 Mtr	-



ANGLE LID (TOP)

Item code	Standard packs	Bulk packs
DP3 AL3 0	2 x 2.9 Mtr	-



CENTRE LID

Item code	Standard packs	Bulk packs
DP3 CL3 0	2 x 2.9 Mtr	-



CHAMFERED LID (BOTTOM)

Item code	Standard packs	Bulk packs
DP3 BL3 0	2 x 2.9 Mtr	-



INTERNAL BEND (Set)

Item code	Standard packs	Bulk packs
DP3 IB3	5 Sets	200 Sets

DADO Trunking & Fittings *Harmony*

Standard Size : 160 mm x 50 mm
 Standard Length: 2.9 metre. Alternative lengths can be supplied to order
 Standard Set : 3 pieces (for internal bend, external bend & coupler) and a pair for end cap
 Standard Colour: White. Other finishes, designs and colours are available on request



EXTERNAL BEND (Set)

Item code	Standard packs	Bulk packs
DP3 EB3	5 Sets	130 Sets



COUPLER (Set)

Item code	Standard packs	Bulk packs
DP3 C3	5 Sets	200 Sets



END CAP L/R (Set)

Item code	Standard packs	Bulk packs
DP3 EC3 L/R	5 Sets	200 Sets



FLAT ANGLE UP/DOWN

Item code	Standard packs	Bulk packs
DP3 FA3 U/D	1 Set	-



FLAT TEE UP/DOWN

Item code	Standard packs	Bulk packs
DP3 FT3 U/D	1 Set	-



DECODUCT®

CABLE MANAGEMENT SYSTEMS

DADO Trunking & Fittings Chorus



BASE UNIT

Item code	Standard packs	Bulk packs
DP4 BU4 0	2 x 2.9 Mtr	-



ANGLE LID (TOP)

Item code	Standard packs	Bulk packs
DP4 AL4 0	2 x 2.9 Mtr	-



CENTRE LID

Item code	Standard packs	Bulk packs
DP4 CL4 0	2 x 2.9 Mtr	-



ANGLE LID (BOTTOM)

Item code	Standard packs	Bulk packs
DP4 AL4 0	2 x 2.9 Mtr	-



INTERNAL BEND (SET)

Item code	Standard packs	Bulk packs
DP4 IB4 0	5 Sets	200

DADO Trunking & Fittings Chorus

Standard Size : 160 mm x 50 mm

Standard Length : 2.9 metre. Alternative lengths can be supplied to order

Standard Set : 3 pieces (for internal bend, external bend & coupler)
and a pair for end cap

Standard Colour: White. Other finishes, designs and colours
are available on request



EXTERNAL BEND (SET)

Item code	Standard packs	Bulk packs
DP4 EB4	5 Sets	130



COUPLER (SET)

Item code	Standard packs	Bulk packs
DP4 C4	5 Sets	200



END CAP L/R (SET)

Item code	Standard packs	Bulk packs
DP4 EC4 L/R	5 Sets	200



FLAT ANGLE

Item code	Standard packs	Bulk packs
DP4 FA4	1 Set	-



FLAT TEE

Item code	Standard packs	Bulk packs
DP4 FT4	1 Set	-



1 GANG

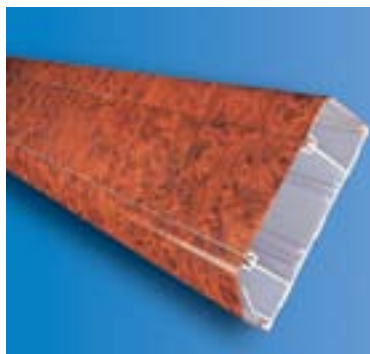
Item code	Size (mm)	Standard packs	Bulk packs
D P 1SB	87 x 87 x 25	20	320



2 GANG

Item code	Size (mm)	Standard packs	Bulk packs
D P 2SB	87 x 147 x 25	10	160

DADO Trunking - Decorative Finishes



WOOD BURL

Item codes for profiles and accessories should be suffixed with /WB.
eg. for bevelled lid of profile 2 - to read as DP2 BL2 0/WB



WOOD GRAIN

Item codes for profiles and accessories should be suffixed with /WG.
eg. for bevelled lid of profile 2 - to read as DP2 BL2 0/WG



WHITE MARBLE

Item codes for profiles and accessories should be suffixed with /WM.
eg. for bevelled lid of profile 2 - to read as DP2 BL2 0/WM



GREEN MARBLE

Item codes for profiles and accessories should be suffixed with /GM.
eg. for bevelled lid of profile 2 - to read as DP2 BL2 0/GM

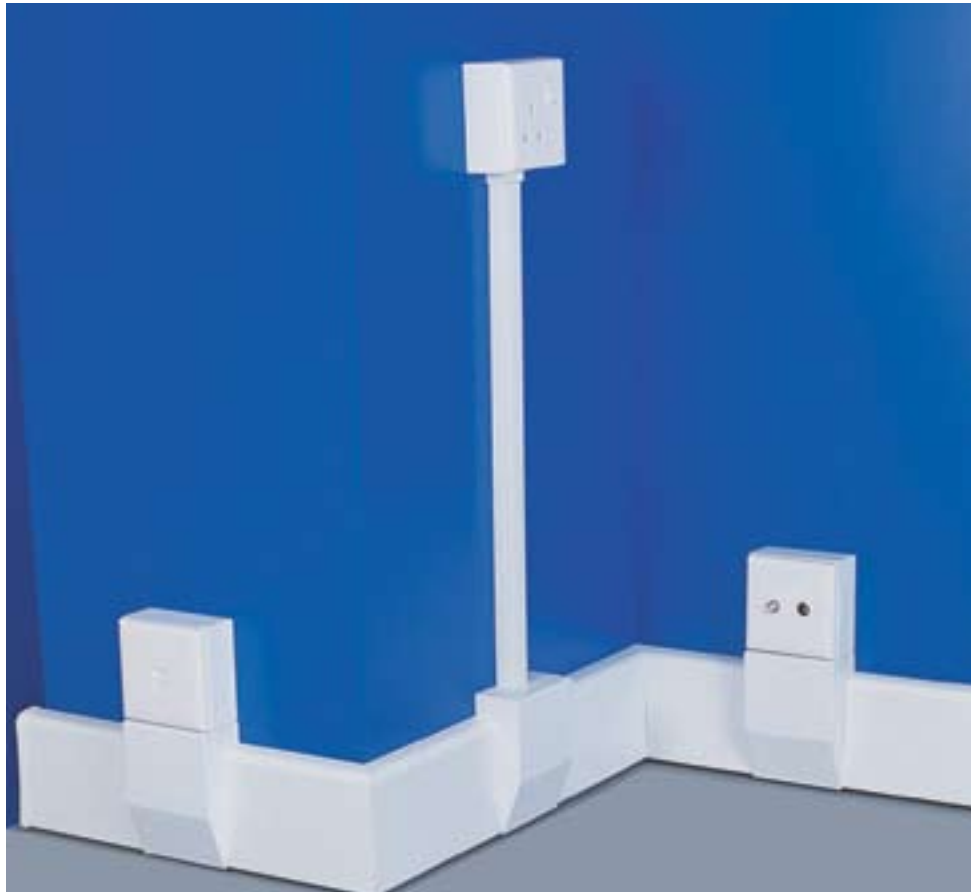


BLACK MARBLE

Item codes for profiles and accessories should be suffixed with /BM.
eg. for bevelled lid of profile 2 - to read as DP2 BL2 0/BM



Skirting Trunking System



- 3 compartment mini skirting trunking suitable for commercial and domestic use.
- An unobtrusive and aesthetically designed system.
- Three compartments segregate power, data and communication cabling.
- Purpose designed accessory box adaptor, which overlaps the trunking allowing tolerance for on site cutting.
- High impact resistant and sleek system designed as a neat and economical skirting.
- Choice of custom decorative designs (eg. wood burl, wood grain and marble) and colours are available. Ask for design and colour database.

Options : White. Other colours are available upon request • Standard length 2.9 meters

Skirting Trunking Systems



SKIRTING TRUNKING (3 compartments)

Item code	Size (mm)	Standard packs		Bulk packs
		Pcs	Mtrs	
DSKT 1	100 x 25	2	5.8	-



EXTERNAL BEND

Item code	Standard packs	Bulk packs
DSKEB 1	10	400



INTERNAL BEND

Item code	Standard packs	Bulk packs
DSKIB 1	10	550



ACCESSORY BOX MOUNTING ADAPTOR

Item code	Standard packs	Bulk packs
DSKA 1	10	160



Skirting Trunking Fittings



COUPLER

Item code	Standard packs	Bulk packs
DSKC 1	50	2000



END CAPS

Item code	Standard packs	Bulk packs
DSKEC 1/R	100	4000
DSKEC 1/L	100	4000



CABLE RETAINER

Item code	Standard packs	Bulk packs
DSKCR 1	100	4000

Decorative Finishes



Wood Burl



Wood Grain



White Marble



Green Marble

Other finishes and designs are available on request

Options : White. Other colours are available upon request • Standard length 2.9 meters

Ceiling Coving Trunking

Standard Size : 127 mm x 127 mm

Standard Length: 2.9 metre. Alternative lengths can be supplied to order



COVING TRUNKING

Item code	Standard packs	Bulk packs
DCT 127	2 x 2.9 Mtr	-



EXTERNAL BEND

Item code	Standard packs	Bulk packs
DCEB	2	-



INTERNAL BEND

Item code	Standard packs	Bulk packs
DCIB	2	-



COUPLER

Item code	Standard packs	Bulk packs
DCC	6	-



END CAP

Item code	Standard packs	Bulk packs
DCEC	2	-



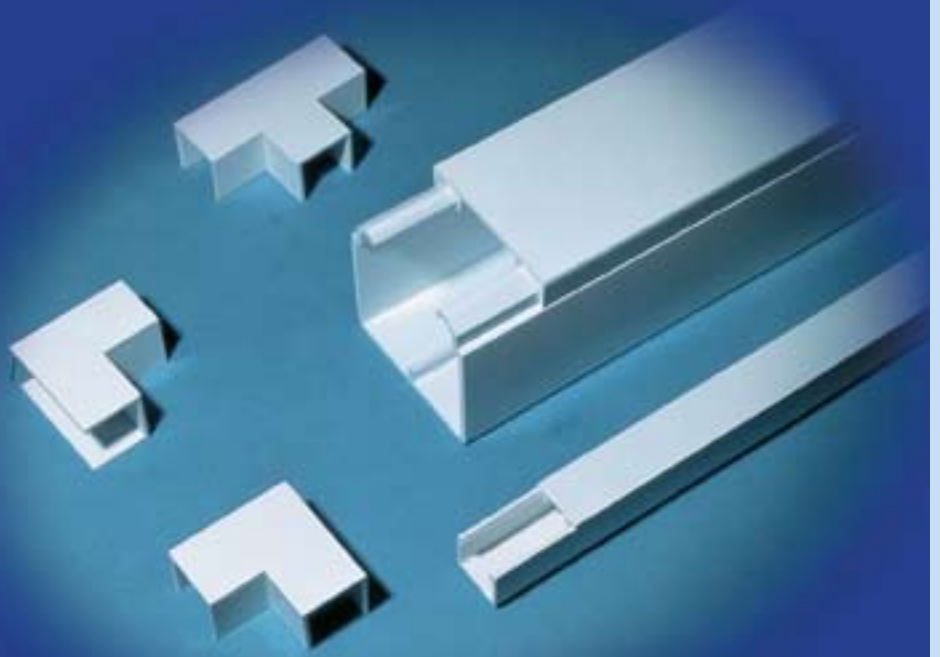
Trunking

**MANUFACTURED IN ACCORDANCE WITH
BRITISH STANDARDS**

Trunking & Fittings : BS EN 50085

**Mini Trunking Switch BS 5733
& Socket Boxes : BS 4662**

MINI & MAXI TRUNKING SYSTEMS





Mini Trunking System

DECODECT Mini Trunking System is manufactured from high impact uPVC compound to withstand harsh environments. Clip-on lid provides security while at the same time is easy to remove. Available in self fixing form with self fix tape for rapid and easy installation.



MICRO TRUNKING

Item code	Size (mm)	Standard packs		Bulk packs
		Pcs	Mtrs	
DMT 0	12 x 8	50	145	-



MINI TRUNKING

Item code	Size (mm)	Standard packs		Bulk packs
		Pcs	Mtrs	
DMT 1	16 x 16	30	87.0	-
DMT 2	25 x 16	20	58.0	-
DMT 3	38 x 16	20	58.0	-
DMT 4	38 x 25	15	43.5	-
DMT 5	38 x 38	8	23.2	-



TWIN COMPARTMENT TRUNKING

Item code	Size (mm)	Standard packs		Bulk packs
		Pcs	Mtrs	
DMT 3C	38 x 16	20	58	-



SELF FIX MINI TRUNKING

Item code	Size (mm)	Standard packs		Bulk packs
		Pcs	Mtrs	
DMT 0SF	12 x 8	50	145	-
DMT 1SF	16 x 16	30	87.0	-
DMT 2SF	25 x 16	20	58.0	-
DMT 3SF	38 x 16	20	58	-
DMT 4SF	38 x 25	15	43.5	-
DMT 5SF	38 x 38	8	23.2	-

• To be used on dust free surface • Peel off backing film in small lengths at a time
• Position trunking accurately and press to clean surface

Options : Standard length 2.9metres in white. Other lengths and colours are available upon request.

Mini Trunking Fittings

DECODUCT Mini Trunking Fittings are designed to snap on to the trunking to provide a secure and aesthetic finish.



COUPLERS

Item code	Size (mm)	Standard packs	Bulk packs
DMNC 1	16 x 16	10	-
DMNC 2	25 x 16	10	-
DMNC 3	38 x 16	10	-
DMNC 4	38 x 25	10	-
DMNC 5	38 x 38	10	-



SURFACE BOX ADAPTORS

Item code	Size (mm)	Standard packs	Bulk packs
DMNA 1	16 x 16	10	-
DMNA 2	25 x 16	10	-



END CAPS

Item code	Size (mm)	Standard packs	Bulk packs
DMEC 1	16 x 16	10	-
DMEC 2	25 x 16	10	-
DMEC 3	38 x 16	10	-
DMEC 4	38 x 25	10	-
DMEC 5	38 x 38	10	-



INSIDE ANGLE

Item code	Size (mm)	Standard packs	Bulk packs
DMAI 1	16 x 16	10	-
DMAI 2	25 x 16	10	-
DMAI 3	38 x 16	10	-
DMAI 4	38 x 25	10	-
DMAI 5	38 x 38	10	-

Options : White. Other colours are available upon request



Mini Trunking Fittings

DECODECT Mini Trunking Fittings are designed to snap on to the trunking to provide a secure and aesthetic finish.



OUTSIDE ANGLE

Item code	Size (mm)	Standard packs	Bulk packs
DMAO 1	16 x 16	10	-
DMAO 2	25 x 16	10	-
DMAO 3	38 x 16	10	-
DMAO 4	38 x 25	10	-
DMAO 5	38 x 38	10	-



FLAT ANGLE

Item code	Size (mm)	Standard packs	Bulk packs
DMAF 1	16 x 16	10	-
DMAF 2	25 x 16	10	-
DMAF 3	38 x 16	10	-
DMAF 4	38 x 25	10	-
DMAF 5	38 x 38	10	-



FLAT TEE

Item code	Size (mm)	Standard packs	Bulk packs
DMTF 1	16 x 16	10	-
DMTF 2	25 x 16	10	-
DMTF 3	38 x 16	10	-
DMTF 4	38 x 25	10	-
DMTF 5	38 x 38	10	-

Options : White. Other colours are available upon request

Mini Trunking Mounting Boxes

Fitted with M3.5 brass inserts. Earth terminal facility. Fixing centres 60.3mm for single gang and 120.6mm for twin gang boxes



TWIN GANG SURFACE MOUNTING BOX

Item code	DST2/A	Bulk packs
Type	with K.O.	120
Size	87 x 147mm	
Depth	32mm	
Entries	For DMT2 LH,RH and centre entry	
Std Packs	10	



TWIN GANG SURFACE MOUNTING BOX

Item code	DST2/B	Bulk packs
Type	with K.O.	120
Size	87 x 147mm	
Depth	32mm	
Entries	For DMT3 LH,RH and centre entry	
Std Packs	10	



TWIN GANG SURFACE MOUNTING BOX

Item code	DST2/C	Bulk packs
Type	with K.O.	120
Size	87 x 147mm	
Depth	32mm	
Entries	For DMT1 and DMT2	
Std Packs	10	



TWIN GANG SURFACE MOUNTING ACCESSORY BOX

Item code	DST2	Bulk packs
Type	Plain	120
Size	87 x 147mm	
Depth	32mm	
Std Packs	10	

Options : White. Other colours are available upon request



Mini Trunking Mounting Boxes

Fitted with M3.5 brass inserts. Earth terminal facility. Fixing centres 60.3mm for single gang and 120.6mm for twin gang boxes



**SINGLE GANG SURFACE
MOUNTING BOX**

Item code	DSO2/A	Bulk packs
Type	with K.O.	240
Size	87 x 87mm	
Depth	32mm	
Entries	For DMT1 and DMT2 LH,RH and centre entry	
Std Packs	20	



**SINGLE GANG SURFACE
MOUNTING BOX**

Item code	DSO2/B	Bulk packs
Type	with K.O.	240
Size	87 x 87mm	
Depth	32mm	
Entries	For DMT3 LH,RH and centre entry	
Std Packs	20	



**SINGLE GANG SURFACE
MOUNTING BOX**

Item code	DSO2/C	Bulk packs
Type	with K.O.	240
Size	87 x 87mm	
Depth	32mm	
Entries	For DMT1 and DMT2	
Std Packs	20	



**SINGLE GANG SURFACE
MOUNTING BOX**

Item code	DSO2	Bulk packs
Type	Plain	240
Size	87 x 87mm	
Depth	32mm	
Std Packs	20	

Options : White. Other colours are available upon request

Maxi Trunking System

DECODUCT Maxi Trunking System design is robust and built to last as it is manufactured from a super high impact uPVC compound to withstand the most harsh working environments. Its design has been improved with security in mind and at the same time giving the convenience to segregate cables by using the new clip-in dividers for all seven sizes



MAXI TRUNKING

Item code	Size (mm)	Standard packs		Bulk packs
		Pcs	Mtrs	
DXT 1	50 x 50	8	23.2	-
DXT 2	75 x 50	4	11.6	-
DXT 3	75 x 75	4	11.6	-
DXT 5	100 x 100	2	5.8	-
DXT 6	150 x 100	2	5.8	-



MAXI TRUNKING

Item code	Size (mm)	Standard packs		Bulk packs
		Pcs	Mtrs	
DXT 4/A	100 x 40	4	11.6	-
DXT 4	100 x 50	4	11.6	-

DXT 4 & DXT4/A fitted with dividing fillet DDF1 for segregation of Data, Power and Communication cables along with DXT B1 & DXT B2 accessory box



DIVIDING FILLET

Item code	Size (mm)	Standard packs		Bulk packs
		Pcs	Mtrs	
DDF 0	40 for use with use DXT4/A	10	29	-
DDF 1	50 for use with DXT1, DXT2, & DXT4	10	29	-
DDF 2	75 for use with DXT3	10	29	-
DDF 3	100 for use with DXT5, DXT6	10	29	-



1 & 2 GANG

MAXI TRUNKING FLUSH ACCESSORY BOX

Item code	Size (mm)	Standard packs	Bulk packs
DXT B1	87 X 87 X 25	20	320
DXT B2	87 X 147 X 25	10	160

• Suitable for installation with DXT4/A and DXT4

Options : White. Other colours are available upon request. • Standard length 2.9meters



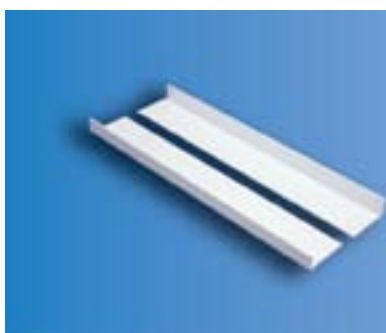
Maxi Trunking Fittings

Maxi Trunking Fittings are available both moulded and fabricated to the highest precision so as to suit the trunking profiles allowing secured, quick and easy installations.



STRAIGHT COUPLER

Item code	Size (mm)		Standard packs	Bulk packs
DSC 1	50 x 50	(Moulded)	2	-
DSC 2	75 x 50	(Moulded)	2	-
DSC 3	75 x 75	(Moulded)	2	-
DSC 4/A	100 x 40	(Moulded)	2	-
DSC 4	100 x 50	(Moulded)	2	-



INTERNAL COUPLER

Item code	Size (mm)		Standard packs	Bulk packs
DIC 1	50 x 50	(Fabricated)	10	-
DIC 2	75 x 50	(Fabricated)	10	-
DIC 3	75 x 75	(Fabricated)	10	-
DIC 4/A	100 x 40	(Fabricated)	10	-
DIC 4	100 x 50	(Fabricated)	10	-
DIC 5	100 x 100	(Fabricated)	10	-
DIC 6	150 x 100	(Fabricated)	10	-



END CAP

Item code	Size (mm)		Standard packs	Bulk packs
DMXEC 1	50 x 50	(Moulded)	10	-
DMXEC 2	75 x 50	(Moulded)	10	-
DMXEC 3	75 x 75	(Moulded)	10	-
DMXEC 4/A	100 x 40	(Moulded)	10	-
DMXEC 4	100 x 50	(Moulded)	10	-
DMXEC 5	100 x 100	(Moulded)	10	-
DMXEC 6	150 x 100	(Moulded)	10	-



INSIDE ANGLE

Item code	Size (mm)		Standard packs	Bulk packs
DAI 1	50 x 50	(Moulded)	2	-
DAI 2	75 x 50	(Moulded)	2	-
DAI 3	75 x 75	(Moulded)	2	-
DAI 4/A	100 x 40	(Moulded)	2	-
DAI 4	100 x 50	(Moulded)	2	-
DAI 5	100 x 100	(Fabricated)	2	-
DAI 6	150 x 100	(Fabricated)	2	-



FLAT ANGLE

Item code	Size (mm)		Standard packs	Bulk packs
DAF 1	50 x 50	(Moulded)	2	-
DAF 2	75 x 50	(Moulded)	2	-
DAF 3	75 x 75	(Moulded)	2	-
DAF 4/A	100 x 40	(Moulded)	2	-
DAF 4	100 x 50	(Moulded)	2	-
DAF 5	100 x 100	(Fabricated)	2	-
DAF 6	150 x 100	(Fabricated)	2	-

Options : White. Other colours are available upon request

Maxi Trunking Fittings



OUTSIDE ANGLE

Item code	Size (mm)	Standard packs	Bulk packs
DAO 1	50 x 50 (Moulded)	2	-
DAO 2	75 x 50 (Moulded)	2	-
DAO 3	75 x 75 (Moulded)	2	-
DAO 4/A	100 x 40 (Moulded)	2	-
DAO 4	100 x 50 (Moulded)	2	-
DAO 5	100 x 100 (Fabricated)	2	-
DAO 6	150 x 100 (Fabricated)	2	-



FLAT TEE

Item code	Size (mm)	Standard packs	Bulk packs
DTF 1	50 x 50 (Moulded)	2	-
DTF 2	75 x 50 (Moulded)	2	-
DTF 3	75 x 75 (Moulded)	2	-
DTF 4/A	100 x 40 (Moulded)	2	-
DTF 4	100 x 50 (Moulded)	2	-
DTF 5	100 x 100 (Fabricated)	2	-
DTF 6	150 x 100 (Fabricated)	2	-



EDGE TEE

Item code	Size (mm)	Standard packs	Bulk packs
DTE 1	50 x 50 (Fabricated)	2	-
DTE 2	75 x 50 (Fabricated)	2	-
DTE 3	75 x 75 (Fabricated)	2	-
DTE 4/A	100 x 40 (Fabricated)	2	-
DTE 4	100 x 50 (Fabricated)	2	-
DTE 5	100 x 100 (Fabricated)	2	-
DTE 6	150 x 100 (Fabricated)	2	-



FLAT CROSSOVER UNIT

Item code	Size (mm)	Standard packs	Bulk packs
DCF 1	50 x 50 (Fabricated)	2	-
DCF 2	75 x 50 (Fabricated)	2	-
DCF 3	75 x 75 (Fabricated)	2	-
DCF 4/A	100 x 40 (Fabricated)	2	-
DCF 4	100 x 50 (Fabricated)	2	-
DCF 5	100 x 100 (Fabricated)	2	-
DCF 6	150 x 100 (Fabricated)	2	-

Options : White. Other colours are available upon request



DUCT CORRUGATED OVAL SCHEDULE 40 CONDUIT

**MANUFACTURED IN ACCORDANCE WITH
BRITISH & AMERICAN STANDARDS**

Rigid Round

Conduits & Fittings : BS EN 61386 -21

Corrugated Conduits : BS EN 61386 -22

Oval Conduits

Schedule 40 Conduits : NEMA TC2

Conduit Switch

& Socket Boxes : BS 5733 / BS 4662

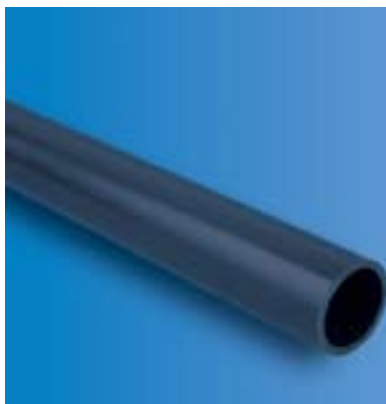
CONDUIT SYSTEMS





Conduit System

DECODUCT Conduits are manufactured from super high impact uPVC compound suitable to withstand harsh environments. Conduits can be bent with the use of a bending spring.



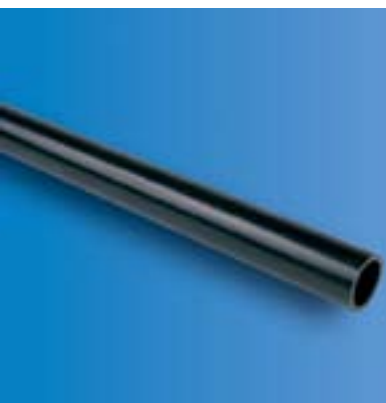
HEAVY GRADE ROUND CONDUIT-1250N COMPRESSION FORCE

Item code	Nominal Size	Minimum Inside	Standard packs		Bulk packs
	(O.D.) mm	Diameter mm	Pcs	Mtrs	Pcs
DCV 1	16	12.4	50	145	-
DCV 2	20	16.0	20	58	5000
DCV 3	25	20.7	20	58	3200
DCV 4	32	26.5	10	29	1800
DCV 5	38	32.5	10	29	1300
DCV 6	50	43.0	10	29	720



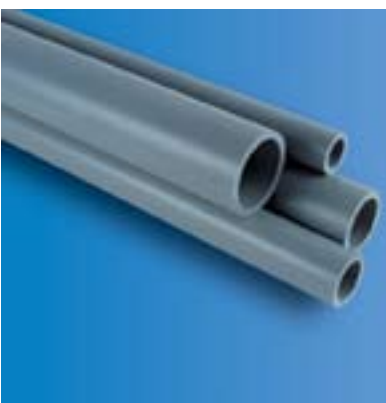
MEDIUM GRADE ROUND CONDUIT-750N COMPRESSION FORCE

Item code	Nominal Size	Minimum Inside	Standard packs		Bulk packs
	(O.D.) mm	Diameter mm	Pcs	Mtrs	Pcs
DCH 1	16	12.8	50	145	-
DCH 2	20	16.5	20	58	5000
DCH 3	25	20.9	20	58	3200
DCH 4	32	27.3	10	29	1800
DCH 5	38	33.1	10	29	1300
DCH 6	50	44.4	10	29	720



LIGHT GRADE ROUND CONDUIT-320N COMPRESSION FORCE

Item code	Nominal Size	Minimum Inside	Standard packs		Bulk packs
	(O.D.) mm	Diameter mm	Pcs	Mtrs	Pcs
DCL 1	16	13.4	50	145	-
DCL 2	20	17.2	20	58	5000
DCL 3	25	21.7	20	58	3200
DCL 4	32	28.5	10	29	1800
DCL 5	38	34.5	10	29	1300
DCL 6	50	45.6	10	29	720



US SCHEDULE 40 CONDUIT

Item code	Trade / Metric	Dimensions (mm)		Standard Packs	
	Sizes Inch/mm	Maximum Outer Diameter	Schedule - 40 Minimum Wall Thickness	Pieces	Metres
DCS4 - 1	1/2" / 16 mm	21.54	2.77	20	60
DCS4 - 2	3/4" / 21 mm	26.92	2.87	10	30
DCS4 - 3	1" / 27 mm	33.66	3.38	10	30
DCS4 - 4	1 1/4" / 35 mm	42.47	3.56	5	15
DCS4 - 5	1 1/2" / 41 mm	48.56	3.68	5	15
DCS4 - 6	2" / 53 mm	60.63	3.91	1	3
DCS4 - 7	3" / 78 mm	89.28	5.49	1	3
DCS4 - 8	4" / 103 mm	115.57	6.02	1	3
DCS4 - 9	6" / 155 mm	169.54	7.11	1	3

• Standard Length of 3 metres in grey colour. Other colours and lengths can be produced upon request.

Conduit System

US SCHEDULE 80 CONDUIT

Item code	Trade / Metric Sizes Inch/mm	Dimensions (mm) Maximum Outer Diameter	Schedule - 80 Minimum Wall Thickness	Standard Packs	
				Pieces	Metres
DCS4 - 1	1/2" / 16 mm	21.54	3.73	20	60
DCS4 - 2	3/4" / 21 mm	26.92	3.91	10	30
DCS4 - 3	1" / 27 mm	33.66	4.55	10	30
DCS4 - 4	1 1/4" / 35 mm	42.47	4.85	5	15
DCS4 - 5	1 1/2" / 41 mm	48.56	5.08	5	15
DCS4 - 6	2" / 53 mm	60.63	5.54	1	3
DCS4 - 7	3" / 78 mm	89.28	7.62	1	3
DCS4 - 8	4" / 103 mm	115.57	8.56	1	3
DCS4 - 9	6" / 155 mm	169.54	10.97	1	3

• Standard Length of 3 metres in grey colour. Other colours and lengths can be produced upon request.

OVAL CONDUIT

Item code	Size (mm)	Standard packs		Bulk packs
		Pcs	Mtrs	
DOV 1	16 x 0.8	50	150	-
DOV 2	22 x 0.8	50	150	-
DOV 3	28 x 1.0	50	150	-

PLIABLE CONDUIT-CORRUGATED

Item code	Nominal Size (O.D.) (mm)	Minimum Inside Diameter (mm)	Standard packs Mtrs/Roll	Bulk packs
HEAVY GAUGE				8 Rolls
DPH 2	20	15.4	50	8 Rolls
DPH 3	25	20.4	50	8 Rolls
LIGHT GAUGE				
DPL 2	20	15.6	50	8 Rolls
DPL 3	25	20.6	50	8 Rolls

• Available in black, white or grey • Standard Length 50 metres

RECTANGULAR CHANNELS

Item code	Size (mm)	Standard packs		Bulk packs
		Pcs	Mtrs	
DQC 1	13 x 8	50	100	-
DQC 2	25 x 8	50	100	-
DQC 3	38 x 9.5	50	100	-

• Available in black, white or grey
• Standard Length 2 metres

Options

- Decoduct rigid conduit is available in black or white. Please state colour preference
- Decoduct rigid conduit is supplied in standard lengths of 2.9 metres. Alternative lengths can be supplied to order
- Rigid conduits can be offered with belled ends for socket joining. Please specify when this option is required.



Round Conduit Fittings

DECODUCT Conduit fittings are manufactured from super high impact uPVC compound suitable to withstand harsh environments



STRAIGHT COUPLERS

Item code	Size (mm)	Standard packs	Bulk packs
DNC 2	20	100	2600
DNC 3	25	50	1300
DNC 4	32	50	800
DNC 5	38	25	400
DNC 6	50	20	240



EXPANSION COUPLERS

Item code	Size (mm)	Standard packs	Bulk packs
DEC 2	20	50	800
DEC 3	25	25	625
DEC 4	32	10	260
DEC 5	38	10	250
DEC 6	50	10	120



NORMAL BENDS-SLIP TYPE

Item code	Size (mm)	Standard packs	Bulk packs
DLB 2	20	20	320
DLB 3	25	10	160
DLB 4	32	5	60
DLB 5	38	2	60
DLB 6	50	2	28



NORMAL BENDS-HEAVY GAUGE

Item code	Size (mm)	Standard packs	Bulk packs
DHB 2	20	20	320
DHB 3	25	10	160
DHB 4	32	5	60
DHB 5	38	2	60
DHB 6	50	2	30

Options : Available in black or white

Round Conduit Fittings



INSPECTION ELBOWS

Item code	Size (mm)	Standard packs	Bulk packs
DIE 2	20	25	650
DIE 3	25	25	400



INSPECTION BENDS

Item code	Size (mm)	Standard packs	Bulk packs
DIB 2	20	25	400
DIB 3	25	20	320



INSPECTION TEES

Item code	Size (mm)	Standard packs	Bulk packs
DIT 2	20	20	520
DIT 3	25	20	320



STRAP SADDLES

Item code	Size (mm)	Standard packs	Bulk packs
DSS 2	20	100	4000
DSS 3	25	100	4000
DSS 4	32	100	2600
DSS 5	38	50	2000
DSS 6	50	50	1300

Options : Available in black or white



Round Conduit Fittings



SPACER BAR SADDLES

Item code	Size (mm)	Standard packs	Bulk packs
DSB 2	20	100	2600
DSB 3	25	50	2000
DSB 4	32	50	1300
DSB 5	38	25	1000
DSB 6	50	25	650



ROUND SPRING CLIPS

Item code	Size (mm)	Standard packs	Bulk packs
DRC2	20	200	5200
DRC3	25	100	4000



FEMALE ADAPTORS

Item code	Size (mm)	Standard packs	Bulk packs
DFA2	20	100	2600
DFA3	25	50	1300
DFA4	32	25	650
DFA5	38	20	520
DFA6	50	20	320



MALE ADAPTORS

Item code	Size (mm)	Standard packs	Bulk packs
DMA2	20	100	2600
DMA3	25	50	1300

Options : Available in black or white

Round Conduit Fittings



MALE THREADED BUSH

Item code	Size (mm)	Standard packs	Bulk packs
DMB2	20	200	8000
DMB3	25	100	4000
DMB4	32	100	2600
DMB5	38	50	2000
DMB6	50	25	1000



FEMALE THREADED LOCKRINGS

Item code	Size (mm)	Standard packs	Bulk packs
DFB 2	20	200	8000
DFB 3	25	200	8000



REDUCERS

Item code	Size (mm)	Standard packs	Bulk packs
DRD 2	25/20	100	2600



PLIABLE CONDUIT ADAPTORS

Item code	Size (mm)	Standard packs	Bulk packs
DPA2	20	50	2000
DPA3	25	100	1200

Options : Available in black or white



Round Conduit Circular Junction Boxes

Fixing centres 50.8mm. Earth terminals facility. M4 brass inserts. Load suspension 3kgs at 60°C. Knock outs to accept steel clips for the support of heavy loads.



NO SPOUT BOX

Item code	Size (mm)	Standard packs	Bulk packs
DNS	Plain	25	400



LOOP IN BOXES

Item code	Size (mm)	Standard packs	Bulk packs
DLI 2	20 K.O.(4)	25	400
DLI 3	25 K.O.(2)	25	400



TERMINAL - ONE WAY

Item code	Size (mm)	Standard packs	Bulk packs
DJO 2	20	25	400
DJO 3	25	25	400



THROUGH - TWO WAY

Item code	Size (mm)	Standard packs	Bulk packs
DJT 2	20	25	400
DJT 3	25	25	300

Options : Available in black or white

Round Conduit Circular Junction Boxes



ANGLE - TWO WAY

Item code	Size (mm)	Standard packs	Bulk packs
DJA 2	20	20	320
DJA 3	25	20	320



TEE - THREE WAY

Item code	Size (mm)	Standard packs	Bulk packs
DJE 2	20	20	320
DJE 3	25	20	240



INTERSECTION - FOUR WAY

Item code	Size (mm)	Standard packs	Bulk packs
DJF 2	20	20	240
DJF 3	25	20	240



U - TWO WAY

Item code	Size (mm)	Standard packs	Bulk packs
DJU 2	20	20	320
DJU 3	25	20	320

Options : Available in black or white



Round Conduit Circular Junction Boxes

Fixing centres 50.8mm. Earth terminals facility. M4 brass inserts. Load suspension 3kgs at a of 60°C. Knock outs to accept steel clips for the support of heavy loads.



Y - THREE WAY

Item code	Size (mm)	Standard packs	Bulk packs
DJY 2	20	20	320
DJY 3	25	20	240



H - FOUR WAY

Item code	Size (mm)	Standard packs	Bulk packs
DJH 2	20	20	240
DJH 3	25	20	240



CIRCULAR EXTENSION RINGS

Item code	Size (mm) height	Standard packs	Bulk packs
DER 2	15	50	800
DER 3	20	50	800



CIRCULAR LIDS

Item code	Size (mm)	Standard packs	Bulk packs
DLC 1	66 dia	100	2600

Options : Available in black or white

Round Conduit Fixing Accessories



CIRCULAR JUNCTION BOXES FITTED WITH RUBBER GASKET, LID & SCREWS

Circular junction boxes can be supplied assembled with rubber gasket, lid and screws. Eg. item codes for 20mm 2 way through circular junction box DJT 2 should be suffixed with/RG as DJT 2/RG



RUBBER GASKET

Item code	Size (mm)	Standard packs	Bulk packs
DRG-B	66 dia	100	2600



BENDING SPRINGS

Heavy Gauge Item code	Conduit Size (mm)	Light Gauge Item code	Bulk packs
DBH 2	20	DBL 2	-
DBH 3	25	DBL 3	-

Heavy gauge springs are suitable for heavy & medium gauge round conduits while light gauge springs are suitable for light gauge round conduits



PVC CEMENT

Item code	Standard packs	Bulk packs
DSG 2	24	-

Solvent Cement 250ml cans with applicator.
Suitable for use with DECODUCT uPVC conduit, trunking & fittings



Round Conduit Circular Junction Boxes with Back Outlet

Fixing centres 50.8mm. Earth terminals facility. M4 brass inserts. Load suspension 3kgs at 60°C. Knock outs to accept steel clips for the support of heavy loads.



TERMINAL ONE WAY & BACK OUTLET

Item code	Size (mm)	Standard packs	Bulk packs
DJO 2/BO	20	20	320
DJO 3/BO	25	20	240



THROUGH TWO WAY & BACK OUTLET

Item code	Size (mm)	Standard packs	Bulk packs
DJT 2/BO	20	20	240
DJT 3/BO	25	20	240



ANGLE TWO WAY & BACK OUTLET

Item code	Size (mm)	Standard packs	Bulk packs
DJA 2/BO	20	20	240
DJA 3/BO	25	20	240



TEE THREE WAY & BACK OUTLET

Item code	Size (mm)	Standard packs	Bulk packs
DJE 2/BO	20	20	240
DJE 3/BO	25	10	160

Options : Available in black or white

Round Conduit Circular Junction Boxes with Back Outlet



INTERSECTION FOUR WAY & BACK OUTLET

Item code	Size (mm)	Standard packs	Bulk packs
DJF 2/BO	20	10	160
DJF 3/BO	25	10	160



U-TWO WAY & BACK OUTLET

Item code	Size (mm)	Standard packs	Bulk packs
DJU 2/BO	20	20	240
DJU 3/BO	25	20	240



Y-THREE WAY & BACK OUTLET

Item code	Size (mm)	Standard packs	Bulk packs
DJY 2/BO	20	20	240
DJY 3/BO	25	10	160



H-FOUR WAY & BACK OUTLET

Item code	Size (mm)	Standard packs	Bulk packs
DJH 2/BO	20	10	160
DJH 3/BO	25	10	160

Options : Available in black or white



Round Conduit Accessory Mounting Boxes

Fitted with M3.5 brass fixing threads and earth terminal facility. Fixing centres 60.3mm for single gang and 120.6mm for twin gang boxes



SINGLE GANG SURFACE MOUNTING ACCESSORY BOX

Item code	DSO2	DSO2/K	Bulk packs
Type	Plain	with K.O	240
Depth	32mm	32mm	
Size	87 x 87mm	87 x 87mm	
Std Packs	20	20	



TWIN GANG SURFACE MOUNTING ACCESSORY BOX

Item code	DST2	DST2/K	Bulk packs
Type	Plain	with K.O	120
Depth	32mm	32mm	
Size	87 x 147mm	87 x 147mm	
Std Packs	10	10	



SINGLE GANG FLUSH MOUNTING ACCESSORY BOX

Item code	DFO2/AL	Bulk packs
Type	with K.O. and one adjustable lug	240
Depth	35mm	
Size	74 x 74mm	
Entries	2 x 20 mm on each of the four sides	
Std Packs	20	



TWIN GANG FLUSH MOUNTING ACCESSORY BOX

Item code	DFT2/AL	Bulk packs
Type	with K.O. and one adjustable lug	120
Depth	35mm	
Size	74 x 134.3mm	
Entries	4 x 20 mm on long sides 2 x 20 mm on short sides	
Std Packs	10	

Options : Available in black or white

Round Conduit Accessory Mounting Boxes



HIGH IMPACT SINGLE GANG INDUSTRIAL SURFACE MOUNTING ACCESSORY BOX

Item code	DSI1	Bulk packs
Type	with K.O	-
Depth	45mm	
Size	87 x 87mm	
Entries	5 x 20mm along with plugs	
Std Packs	10	
Material	Polycarbonate	

• Available in Grey but other colours can be produced upon request



SINGLE GANG FLUSH MOUNTING DRY LINING ACCESSORY BOX

Item code	DLO3	Bulk packs
Type	2 x 25mm C.O.	-
Depth	34mm	
Size	74 x 74mm	
Std Packs	20	



TWIN GANG FLUSH MOUNTING DRY LINING ACCESSORY BOX

Item code	DLT3	Bulk packs
Type	2 x 25mm C.O.	-
Depth	34mm	
Size	74 x 134mm	
Std Packs	10	



SQUARE LIDS/RECTANGULAR LIDS (Overlapping)

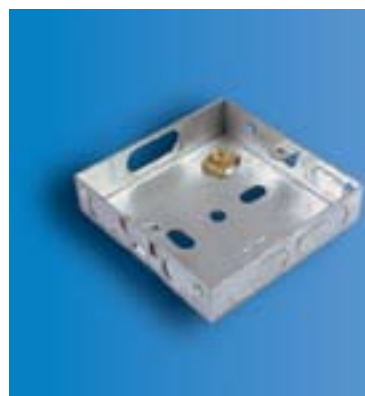
Item code	Size (mm)	Standard packs	Bulk packs
DSL 1	85 x 85mm	100	4000
DSL 2	85 x 146mm	50	1300

Options : Available in black or white



Metal Mounting Boxes

DECODUCT flush mounting metal (GI) boxes are manufactured from the highest quality galvanised steel and can be fitted with brass or steel terminals. Available with adjustable lug. These boxes are manufactured in compliance with BS4662:1970.



SINGLE GANG BOX

Item code	Description
EDF 181	With steel terminal
EDF 182	With brass washer terminal
EDF 183	Without terminal
EDF 184	With brass pillar terminal

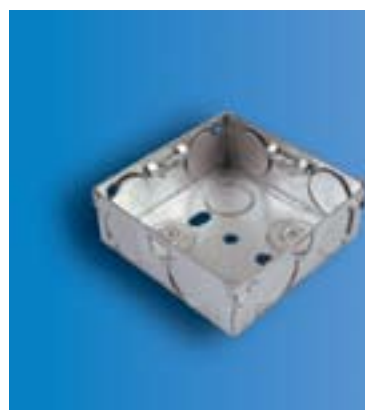
Sheet Thickness: 0.9mm

Dimensions : 72 x 72 x 16 mm

One adjustable and one fixed lug with fixing centres: 60.3 mm

Conduit entries: 4 nos. 25 x 9mm knockouts

3 nos. 15 x 9mm knockouts



SINGLE GANG BOX

Item code	Description
EDF 171	With steel terminal
EDF 172	With brass washer terminal
EDF 173	Without terminal
EDF 174	With brass pillar terminal

Sheet Thickness: 0.9mm

Dimensions : 72 x 72 x 25 mm

Two adjustable and two fixed lugs with fixing centres: 60.3 mm

Conduit entries: 11 x 20 mm knockouts



SINGLE GANG BOX

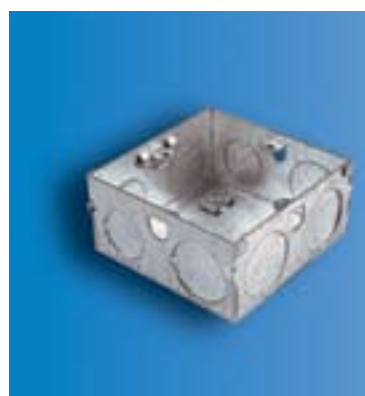
Item code	Description
EDF 151	With steel terminal
EDF 152	With brass washer terminal
EDF 153	Without terminal
EDF 142	With brass pillar terminal

Sheet Thickness: 0.9 mm

Dimensions : 72 x 72 x 35 mm

Four fixed lugs with fixing centres: 60.3 mm

Conduit entries: 7 x 20 mm and 4 x 25 mm knockouts



SINGLE GANG BOX

Item code	Description
EDF 161	With steel terminal
EDF 162	With brass washer terminal
EDF 163	Without terminal
EDF 164	With brass pillar terminal

Sheet Thickness: 0.9mm

Dimensions : 72 x 72 x 35 mm

One adjustable and three fixed lugs with fixing centres: 60.3 mm

Conduit entries: 7 x 20 mm and 4 x 25 mm knockouts

Metal Mounting Boxes



SINGLE GANG BOX

Item code	Description
EDF 165	With steel terminal
EDF 166	With brass washer terminal
EDF 167	Without terminal
EDF 168	With brass pillar terminal

Sheet Thickness: 1.1mm

Dimensions : 72 x 72 x 35 mm

Two adjustable and two fixed lugs with fixing centres: 60.3 mm

Conduit entries: 7 x 20 mm and 4 x 25mm knockouts



SINGLE GANG BOX

Item code	Description
EDF 471	With steel terminal
EDF 472	With brass washer terminal
EDF 473	Without terminal
EDF 474	With brass pillar terminal

Sheet Thickness: 0.9mm

Dimensions : 72 x 72 x 47 mm

Two fixed and two adjustable lugs with fixing centres: 60.3 mm

Conduit entries: 7 x 20 mm and 4 x 25 mm knockouts



TWIN GANG BOX

Item code	Description
EDF 271	With steel terminal
EDF 272	With brass washer terminal
EDF 273	Without terminal
EDF 274	With brass pillar terminal

Sheet Thickness: 0.9 mm

Dimensions : 132 x 72 x 25 mm

One adjustable and one fixed lug with fixing centres: 120.6 mm

Conduit entries: 16 x 20mm knockouts



TWIN GANG BOX

Item code	Description
EDF 251	With steel terminal
EDF 252	With brass washer terminal
EDF 253	Without terminal
EDF 242	With brass pillar terminal

Sheet Thickness: 0.9 mm

Dimensions : 132 x 72 x 35 mm

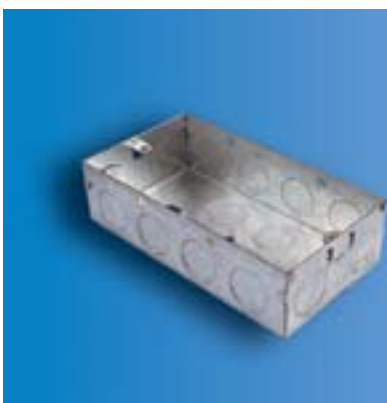
One fixed and one adjustable lug with fixing centres: 120.6 mm

Conduit entries: 10 x 20 mm and 4 x 25 mm knockouts



Metal Mounting Boxes

DECODUCT flush mounting metal (GI) boxes are manufactured from the highest quality galvanised steel and can be fitted with brass or steel terminals. Available with adjustable lug. These boxes are manufactured in compliance with BS4662:1970.



TWIN GANG BOX

Item code	Description
EDF 281	With steel terminal
EDF 282	With brass washer terminal
EDF 283	Without terminal
EDF 284	With brass pillar terminal

Sheet Thickness: 0.9 mm

Dimensions : 132 x 72 x 35 mm

One adjustable and one fixed lug with fixing centres: 120.6 mm

Conduit entries: 16 x 20mm knockouts



TWIN GANG BOX

Item code	Description
EDF 285	With steel terminal
EDF 286	With brass washer terminal
EDF 287	Without terminal
EDF 288	With brass pillar terminal

Sheet Thickness: 1.1 mm

Dimensions : 132 x 72 x 35 mm

One adjustable and one fixed lug with fixing centres: 120.6 mm

Conduit entries: 8 x 20mm and 8 x 25mm knockouts



TWIN GANG BOX

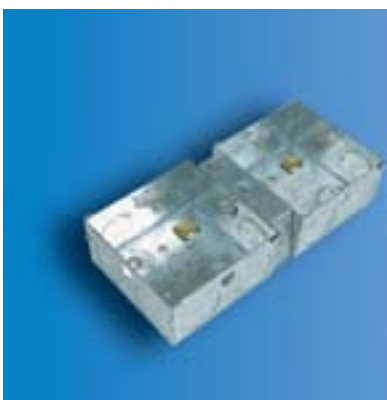
Item code	Description
EDF 475	With steel terminal
EDF 476	With brass washer terminal
EDF 477	Without terminal
EDF 478	With brass pillar terminal

Sheet Thickness: 0.9 mm

Dimensions : 132 x 72 x 47 mm

One adjustable and one fixed lug with fixing centres: 120.6 mm

Conduit entries: 8 x 20mm and 8 x 25mm knockouts



DUAL BOX

Item code	Description
EDF 258	With steel terminal
EDF 259	With brass washer terminal
EDF 260	Without terminal
EDF 243	With brass pillar terminal

Sheet Thickness: 0.9 mm

Depth : 35mm

Eight lugs-all fixed

Conduit entries per one gang box : 7 x 20 mm and 4 x 25 mm knockouts

Adaptable Boxes



ADAPTABLE BOX

Item code	Size (mm)	Nominal Depth (mm)		Standard Packs (pcs)
	Nominal	Base	Lid	
DAB 2 B	75 x 75 x 56	50	6	80
DAB 4 B	100 x 100 x 75	60	15	30
DAB 5 B	150 x 110 x 75	60	15	20
DAB 6 B	150 x 150 x 75	60	15	14
DAB 7 B	190 x 140 x 75	60	15	10
DAB 8 B	225 x 225 x 75	60	15	6
DAB 9 B	240 x 190 x 105	90	15	6

Ingress Protection Rating: IP 56 (with rubber gasket)

Note: Above item codes are for BLACK colour

For white colour replace last digit 'B' with 'W'

For Grey colour replace last digit 'B' with 'G'



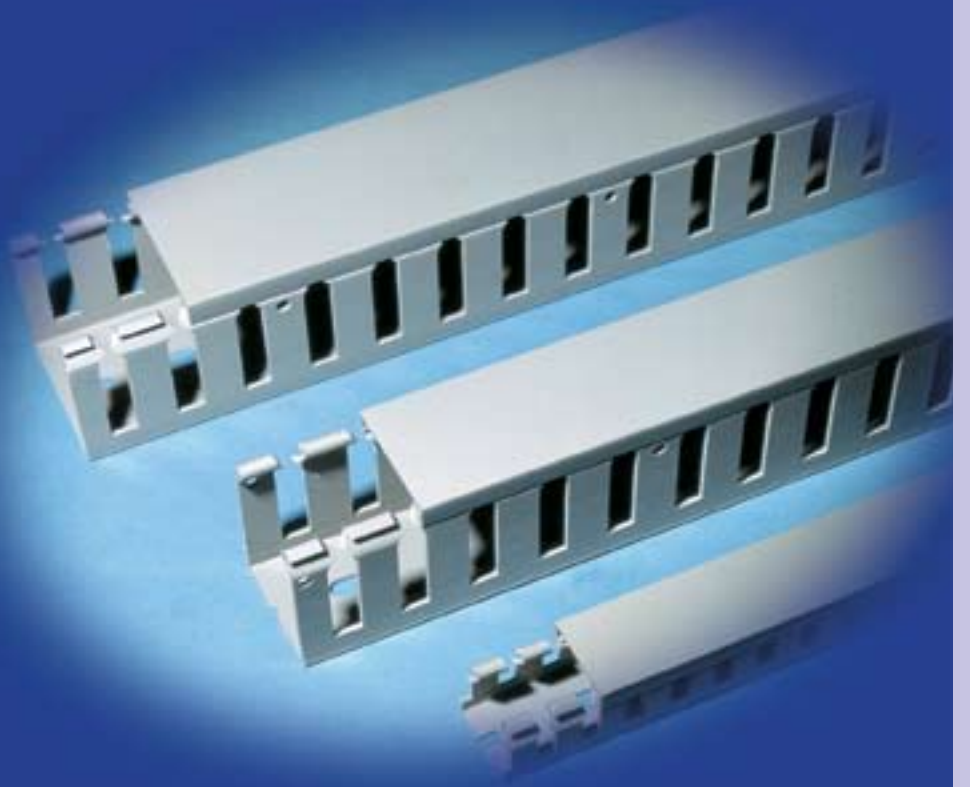
Trunking

**MANUFACTURED IN ACCORDANCE WITH
BRITISH AND EUROPEAN STANDARDS**

Panel Trunking :

BS EN 50085

PANEL TRUNKING





Panel Trunking



PRODUCT RANGE INFORMATION

NOMINAL SIZE	25x25	38x25	38x38	38x50	50x25	50x38
PRODUCT CODE	DST 220	DST 320	DST 330	DST 350	DST 520	DST 530

DIMENSIONS (mm)

Height (H)	25	37.5	37.5	37.5	50	50
Width (W)	25	25	37.5	50	25	37.5
Standard Length	2000	2000	2000	2000	2000	2000
Slot Width (S) W/N	5	5	5	5	8	8
Wall Finger Width (F) W/N	7.5	7.5	7.5	7.5	12	12
Cabling Area (mm ²)	430	705	1,120	1,540	970	1,550

PACKING :

STANDARD PACK :	Pieces	20	16	16	12	16	12
	Metres	40	32	32	24	32	24
	Kgs (W/N)	9.0	8.2	9.7	9.5	9.9	8.5
BULK PACK:	Pieces	80	72	48	32	56	40
	Metres	160	144	96	64	112	80
	Kgs (W/N)	36.2	36.9	29.1	25.2	34.6	28.5

CABLE CAPACITIES (No. of Wires), based on 45% Filling Factor:

1.0 mm ²	29	48	76	105	66	110
1.5 mm ²	25	41	66	91	57	91
2.5 mm ²	20	33	52	72	45	72
4.0 mm ²	13	21	34	47	30	48
6.0 mm ²	10	16	26	36	23	37

Options : Grey. Other colours are available upon request



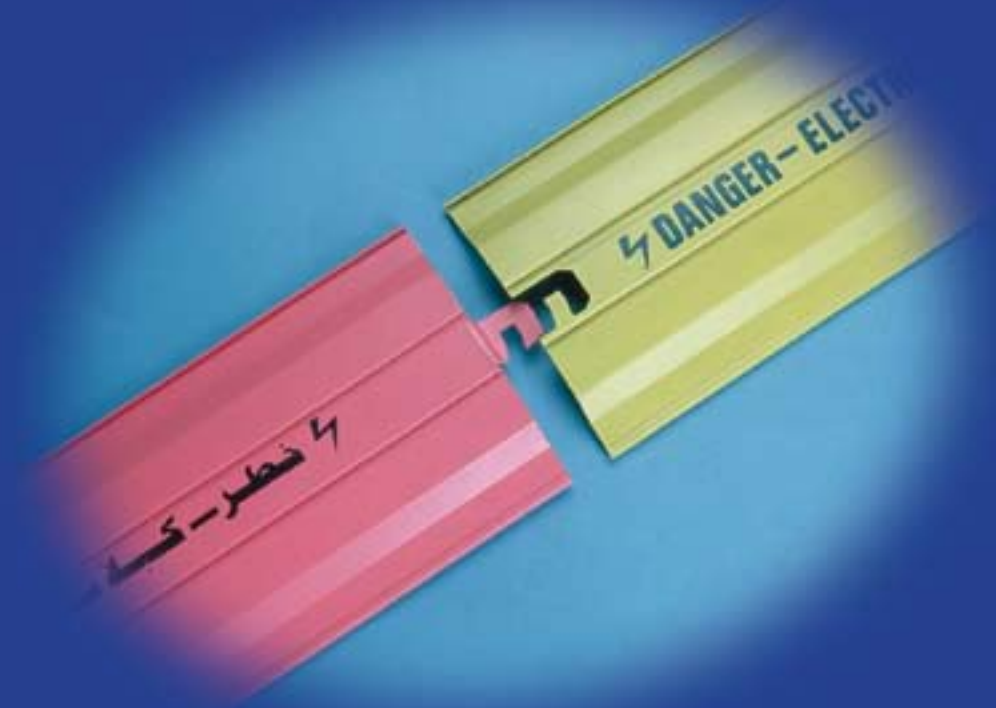
50x50	50x75	62x25	62x38	62x62	75x38	75x50	75x75
DST 550	DST 570	DST 620	DST 630	DST 660	DST 730	DST 750	DST 770
50	50	62.5	62.5	62.5	75	75	75
50	75	25	38	62.5	37.5	50	75
2000	2000	2000	2000	2000	2000	2000	2000
8	8	8/5	8/5	8/5	8	8	8
12	12	12/7.5	12/7.5	12/7.5	12	12	12
2,140	3,285	1,240	1,980	3,460	2,330	3,230	5,020
12	8	16	12	8	8	8	4
24	16	32	24	16	16	16	8
10.4	9.0	7.5/12.5	5.9/9.8	4.5/7.5	7.3	8.5	5.1
56	40	42	30	36	54	42	30
112	80	84	60	72	108	84	60
48.4	44.8	21.7/34.8	16.9/26.7	22.5/35.9	49.4	44.9	38.6
145	223	84	134	235	158	220	342
126	194	73	116	204	137	191	297
100	153	58	92	161	109	151	235
66	101	38	61	106	72	100	155
51	78	29	47	82	55	77	120



INTERGUARD



CABLE PROTECTION SYSTEMS





Rigid PVC Cable Tiles

INTERGARD rigid PVC cable tiles are specially profiled with lengthwise rigidity, and are manufactured from extra tough super high impact PVC compound which is suitable for use in all ground conditions. Being bright, self coloured and robust, INTERGARD tiles are particularly suitable as protective and warning markers for buried electrical and telecommunication cables as well as for underground water or energy pipelines.



PVC CABLE TILES

Item code	Standard Size(mm)		
	Width	Length	Thickness
IPV 1L	150	1000	2.0
IPV 1M	150	1000	2.5
IPV 1H	150	1000	2.7
IPV 1V	150	1000	4.0



PVC CABLE TILES

Item code	Standard Size(mm)		
	Width	Length	Thickness
IPV 2L	200	1000	2.0
IPV 2M	200	1000	2.5
IPV 2H	200	1000	2.7
IPV 2V	200	1000	4.0

FEATURES

- ⚡ Light weight for very easy transportation, handling, storage and installation
- ⚡ Specially designed shape for lengthwise rigidity
- ⚡ Made from rigid PVC which is resistant to ground chemicals
- ⚡ Self coloured for permanent bright colouration, enhancing visibility
- ⚡ Clearly printed with identification, instruction or warnings
- ⚡ Mortice and tenon joint allows for very strong longitudinal interlock
- ⚡ Design also allows lateral joining to cover a wider area of protection when required
- ⚡ Standard colours are RED or YELLOW but manufacturing flexibility allows colour, printing and length to be made to order
- ⚡ Ex-stock
- ⚡ Compliance with the impact strength requirements of British Standard 2484 : 1985

Polyethylene Cables Tiles & Boards

INTERGARD polyethylene cable tiles and boards constitute a cable warning, protection and marker system for use in all ground conditions. Being extremely tough and long lasting they offer ideal protection to all underground services. Each tile is supplied with a peg allowing strong longitudinal joining for uninterrupted protection. INTERGARD polyethylene tiles and boards are extremely tough and do not tend to crack. They comply with the impact strength requirements for concrete tiles to BS 2484.



POLYETHYLENE CABLE TILES(LDPE)

Item code	Width (mm)	Length (mm)	Thickness (mm)
IPE 1	240	1000	6
IPE 2	240	1000	9
IPE 3	240	1000	12



POLYETHYLENE WARNING BOARDS(HDPE)

Item code	Width (mm)	Length (mtr)	Thickness (mm)
IWB 1/2	150	50	2
IWB 1/3	150	50	2.5
IWB 2/2	200	50	2
IWB 2/3	200	50	2.5

FEATURES

- ⚡ Manufactured from polyethylene (HDPE/LDPE) for unmatched strength and durability
- ⚡ Light weight for very easy handling and installation
- ⚡ Clearly printed with identification, instructions or warnings, on bright red or yellow base colouration
- ⚡ Manufacturing flexibility allows colours and printing to be made to order
- ⚡ Available with simple but secure hole/peg joining system, giving a flexible but very strong joint
- ⚡ Special dimensions, up to 1 meter wide and up to 3 meters long can be produced to order
- ⚡ Ex-stock



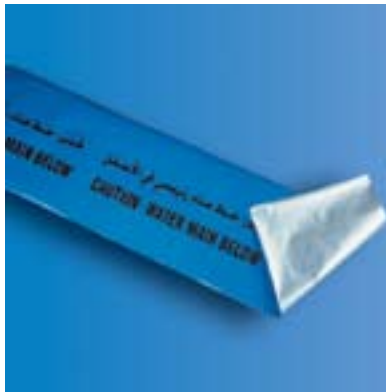
Polyethylene Warning Tapes & Detectable Warning Tapes

INTERGARD warning tapes & boards ensure that excavating crews are alerted to the presence of electric cables, water pipelines, telecommunication cables and other service lines. Manufactured from polyethylene sheet, and are suitable for use in all soil conditions. Unfading colouration and clear printing with warning and identification text make them efficient warning markers.



WARNING TAPES

Item code	Width	Thickness	Roll Length
	mm	microns	Mtrs
IWP 1	100	100	365 or 500
IWP 2	150	100	365 or 500
IWP 3	250	100	365 or 500



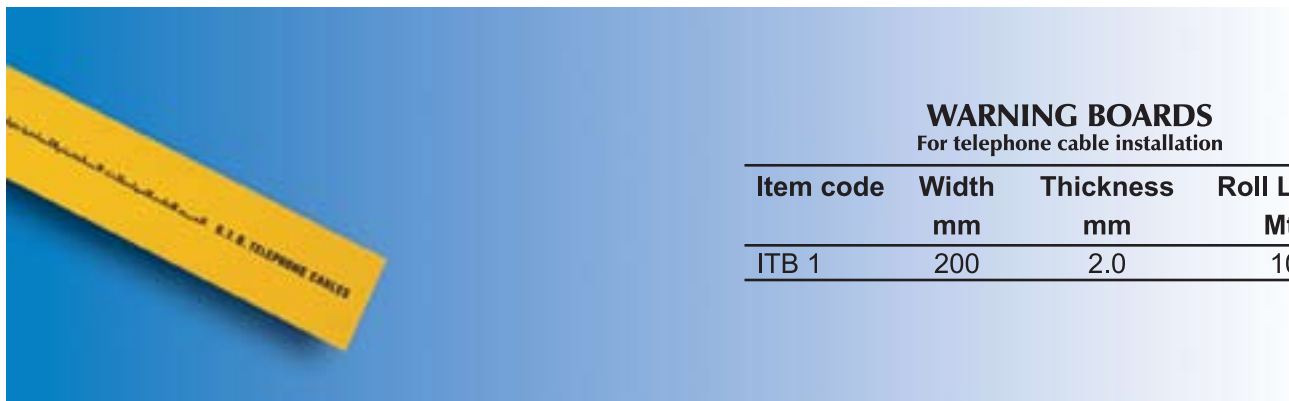
DETECTABLE METAL BACKED WARNING TAPES

Item code	Width	Thickness	Roll Length
	mm	microns	Mtrs
IWP 1-M	150	150	250
IWP 2-M	250	150	250
IWP 3-M	300	150	250

FEATURES

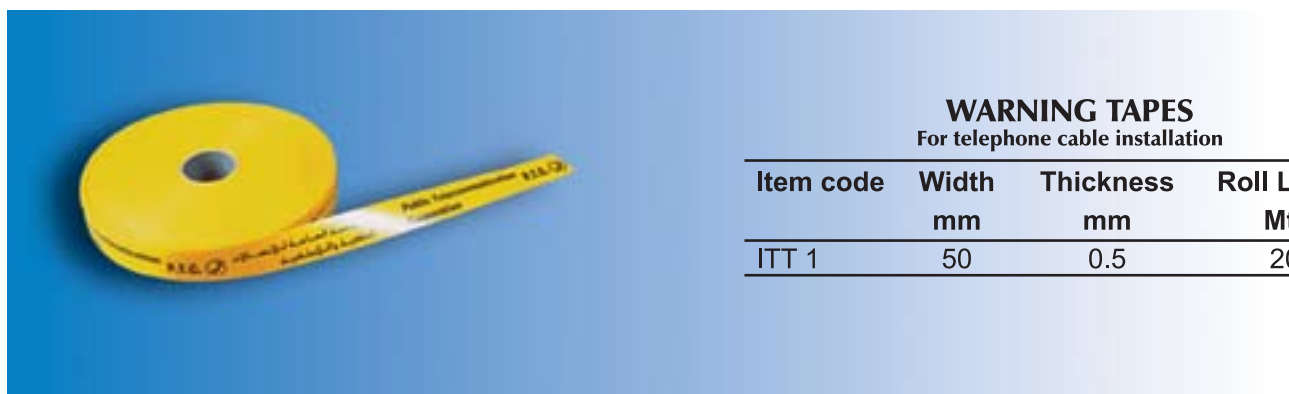
- ⚡ Made from low density polyethylene for toughness and long life
- ⚡ Supplied in rolls which are easy to handle and lay
- ⚡ The material is integrally pigmented for bright, permanent colouration
- ⚡ Available in red, yellow, blue or white standard colours depending on the application
- ⚡ Resistant to chemicals from an acidic value of pH 2.5 to an alkaline value of pH11
- ⚡ Clear, legible printing can be offered according to customers specifications
- ⚡ Manufacturing flexibility allows special widths, thickness, or roll lengths and colours to be produced to order
- ⚡ Ex-stock

Polyethylene Warning Tapes



WARNING BOARDS
For telephone cable installation

Item code	Width mm	Thickness mm	Roll Length Mtrs
ITB 1	200	2.0	100



WARNING TAPES
For telephone cable installation

Item code	Width mm	Thickness mm	Roll Length Mtrs
ITT 1	50	0.5	200



Product

TECHNICAL SPECIFICATIONS



Perimeter Systems - DADO Trunking

Decoduct PVC Perimeter (DADO) Trunking is a new, large capacity Cable Management System for use in modern offices, hospitals, laboratories or workshops, and is ideal for both new building projects and refurbishments.

Salient features of this system include:

- Individual compartment lids for safety and ease of access, with easy clip on features.
- End caps with easy clip on features
- Self aligning Couplers
- External bends featuring internal segregators which offer greater retention and alignment of fitting

Decoduct PVC Perimeter (DADO) Trunking is available in a wide range of decorative finishes in addition to the standard white colour, hence the whole system can be colour coordinated to blend with the interior design/environment

Fabricated DADO Trunking Accessories such as Angles & Tees are under development, and when ready would complete the system and meet the total project requirements of the contractor.

Decoduct PVC DADO Trunking Component Chart

Components	(P1) Profile 1	(P2) Profile 2	(P3) Profile 3	(P4) Profile 4
Base Unit BU1	1	-	-	-
BU2	-	1	-	-
BU3	-	-	1	-
BU4	-	-	-	1
Bevelled Lid BL1	2	-	-	-
BL2	-	1	-	-
BL3	-	-	1	-
Centre Lid CL1	1	-	-	-
CL2	-	1	-	-
CL3	-	-	1	-
CL4	-	-	-	1
Angle Lid AL2	-	1	-	-
AL3	-	-	1	-
AL4	-	-	-	2
Internal Bend (Set) (Number Of Sets Depends On Actual On-Site Requirement)	IB 1	IB 2	IB 3	IB 4
External Bend (Set) (Number Of Sets Depends On Actual On-Site Requirement)	EB 1	EB 2	EB 3	EB 4
Coupler (Set) (Number Of Sets Depends On Actual On-Site Requirement)	C1	C2	C3	C4
End Cap (Set) (Number Of Sets Depends On Actual On-Site Requirement)	EC 1	EC 2	EC 3	EC 4

Mini Trunking System

No more than 45% of the inside space of mini trunking should be occupied by cables. The table below gives the cross-sectional areas of various cables and the maximum number of cables that can be laid in each size of Decoduct mini trunking. If cables of different sizes are to be used, the sum of their nominal cross-sectional areas must be calculated, and then a trunking size with equal or higher filling factor must be selected without exceeding the stipulated space factor of 45%.

Cable Size (mm ²)	Normal Overall Cross Sectional Area(mm ²)	Decoduct Mini Trunking Size References					
		DMT 0	DMT 1	DMT 2	DMT 3	DMT 4	DMT 5
		45% Filling Factor(mm ²)					
		19	68	119	199	336	496
Single core cables		Maximum number of cables					
1.0	6.6		10	18	30	50	
1.5	7.6		8	15	26	44	
2.5	9.6		7	12	20	35	
4.0	14.5		4	8	13	23	
6.0	18.8		3	6	10	17	
10	29.3		2	4	6	11	
16	40.2		1	2	4	8	
25	63.8		1	1	3	5	
35.0	83.5		-	1	1	4	
50.0	113.0		-	-	1	2	
95.0	204.0		-	-	-	1	
Flat twin & earth cables							
1.0	30.3		2	3	6	11	
1.5	38.3		1	3	5	8	
2.5	54.0		1	2	3	6	
4.0	66.4		1	1	2	5	
6.0	87.9		-	1	2	3	



Mini Trunking System

Safety

To ensure safety in use, the installation should be undertaken by competent personnel and in accordance with relevant codes of practice and statutory requirements. Information on proper installation can be found in:

- Regulations, British Standards specifications and codes of practice
- Regulations for Electrical equipment of buildings (IEE publication)

Description

Decoduct mini trunking consists of a body, and a clip-on lid which is fitted to the body by pressing it along its front face. The lid can be easily removed by lifting it from the body at one end and then peeling it away. The lid has an easy closing mechanism which is designed to give a securely closed installation, yet is easily accessible for maintenance or modifications.

Fixing

Holes should be drilled on the base of the body to mechanically fix to the desired surface using flat head screws. Fixing centres should not be more than 40cm apart, or more than 15cm away from the end of a straight run. On appropriate surfaces, the trunking can also be fixed by using a suitable contact adhesive. Alternatively DECODUCT trunking can be installed on clean dry surfaces.

Jointing

A fine toothed tenon saw and mitre block should be used to cut the trunking, to provide a neat installation. In all straight joints, it is important to stagger the joints of the trunking body and lid to give better protection and reduce joint visibility. On long straight runs, allowance for expansion must be made. For corners, the trunking must be mitred and for T-joints it must be slotted for cable entry.

Self-adhesive fixing

Decoduct self-fix mini trunking is offered with self-adhesive tape for easier fixing on suitable surfaces. The surface should be flat, clean, dry and free from dust or flaky paint. The backing should be peeled-off not more than 12 cm at a time, to expose the adhesive tape. Ensure the trunking is correctly positioned before pressing on surface as the self adhesive tape is designed to give immediate fixing. For permanence, screws can also be used.

Maxi Trunking System

Single-core P.V.C. insulated cables in trunking

For each cable it is intended to use, obtain the appropriate factor from Table 1A.

Add all the cable factors so obtained and compare with the factors for trunking given in Table 1B.

The size of trunking which will satisfactorily accommodate the cables is that size having a factor equal to or exceeding the sum of the cable factors.

TABLE 1A
Cable Factors for trunking

Type of Conductor	Conductor Cross-sectional area mm ²	Factor
Solid	1.0	7.1
	2.5	10.2
Stranded	1.5	8.1
	2.5	11.4
	4.0	15.2
	4.0	15.2
	6.0	22.9
	10.0	36.3

TABLE 1B
Factors for trunking

Dimensions of Trunking mm x mm		Factor
DXT 1	50 x 50	1037
DXT 2	75 x 50	1555
DXT 3	75 x 75	2371
DXT 4A	100 x 40	2200
DXT 4	100 x 50	2091
DXT 5	100 x 100	4252
DXT 6	1 00 x 150	4650

For other sizes and types of cable or trunking

For sizes and types of cable and sizes of trunking other than those given in Tables 1A and 1B above, the number of cables installed should be such that the resulting space factor does not exceed 45%.

The table below gives the 45% filling factors for Decoduct Maxi-Trunking, based on which the right size of trunking can be selected.

Item Code	Size(mm)	45% Filling Factor(mm2)
DXT 1	50 X 50	940
DXT 2	75 X 50	1700
DXT 3	75 X 75	2450
DXT 4A	100 X 40	2350
DXT 4	100 X 50	2250
DXT 5	100 X 100	4350
DXT 6	100 X 150	4500



Maxi Trunking System

Safety

To realize the full advantages of the Decoduct system, as well as to ensure safety, its installation, commissioning and maintenance should be undertaken by competent personnel and in accordance with relevant codes of practice and statutory requirements. Information on the installation of Decoduct products to ensure that so far as it is reasonably practicable they are safe and without risk to health when properly used, can be found in:

- Regulations, British Standards specifications and codes of practice
- Regulations for Electrical equipment of buildings (IEE publication)

Description

Seven sizes of Decoduct maxi trunking are available, each consisting of a U-channel body, and a specially designed clip-on lid for secure closing. The lid is closed by aligning it with the body, clipping it on one end of the body, and pressing into place along the length of the trunking, applying equal pressure on both sides. Lid removal is simply done by starting at one end and peeling of the lid along the length of the trunking.

Fixing

Two widely spaced holes should be drilled on the base of the trunking body at every fixing point. Fixing can be done using screws and fixing points should not be spaced more than one metre apart. The drilled holes should be oversized to allow for expansion, and washers should be used under the heads of screws. Care should be taken not to overtighten the screws.

Jointing

A fine toothed tenon saw and mitre block should be used to cut trunking, for accurate clean cuts leading to a neat installation. In all straight joints, it is important to stagger the joints of the trunking body and lid, to give better cable protection and reduce joint visibility. For corners and T-joints, a comprehensive range of Decoduct maxi-trunking fittings is provided, complete with extended lids on all branches, to provide an overlap. The fittings are fitted by removing the lids, drilling holes and using washers and screws, as in the case of trunking. After the cables are laid, the lids of the fittings should be fitted first, before finally fitting the lids on the trunking body.

Conduit Systems

Single-core PVC insulated cables in straight runs of conduit not exceeding 3m in length

For each cable it is intended to use, obtain the appropriate factor from Table 12A. Add all the cable factors so obtained and compare with the conduit factors given in Table 12B. The conduit size which will satisfactorily accommodate the cables is that size having a factor equal to or exceeding the sum of the cable factors.

TABLE 12A
Cable factors for short straight runs

Type of Conductor	Conductor cross sectional area mm ²	Factor
Solid	1.0	22
	1.5	27
	2.5	39
	1.5	31
Stranded	2.5	43
	4.0	58
	6.0	88
	10.0	146

Table 12B Conduit factors for short straight runs

Conduit dia (mm)	Factor
16	290
20	460
25	800
32	1400

TABLE 12C Cable factors for short straight runs or runs incorporating bends

Type of Conductor	Conductor cross sectional area mm ²	Factor
Solid or Stranded	1.0	16
	1.5	22
	2.5	30
	4.0	43
	6.0	58
	10.0	105

Single-core PVC insulated cables in straight runs of conduit exceeding 3m in length or in runs of any length incorporating bends or sets

For each cable it is intended to use, obtain the appropriate factor from Table 12C.

Add all the cable factors so obtained and compare with the conduit factors given in Table 12D, taking into account the length of run it is intended to use and the number of bends and sets in that run. The conduit size which will satisfactorily accommodate the cables is that size having a factor equal to or exceeding the sum of the cable factors.

TABLE 12D Conduit factors for runs incorporating bends

Length of run m	Conduit																			
	16	20	25	32	16	20	25	32	16	20	25	32	16	20	25	32	16	20	25	32
	Straight				One bend				Two bends				Three bends				Four bends			
1.0	Covered by Tables 12A and 12B				188	303	543	947	177	286	514	900	158	256	463	818	130	213	388	692
1.5					182	294	528	923	167	270	487	857	143	233	422	750	111	182	333	600
2.0					177	286	514	900	158	126	463	818	130	213	388	692	97	159	292	529
2.5					171	278	500	878	150	244	442	783	120	196	358	643	86	141	260	474
3.0					167	270	487	857	143	233	422	750	111	182	333	600				
3.5	179	290	521	911	162	263	475	837	136	222	404	720	103	163	311	563				
4.0	177	286	514	900	158	256	463	818	130	213	388	692	97	159	292	529				
4.5	174	282	507	889	184	250	452	800	125	204	373	667	91	149	275	500				
5.0	171	278	500	878	150	244	442	783	120	196	358	643	86	141	260	474				
6.0	167	270	487	857	143	233	422	750	111	182	333	600								
7.0	162	263	475	837	136	222	404	720	103	169	311	563								
8.0	158	256	463	818	130	213	388	692	97	159	292	529								
9.0	154	250	452	800	125	204	373	667	91	49	275	500								
10.0	150	244	442	783	120	196	358	643	86	141	260	474								



Safety

To ensure safety in installation, commissioning and maintenance, work should be undertaken by competent personnel and in accordance with relevant codes of practice and statutory requirements. Information on installation can be found in:

- Regulations, British Standards specifications and codes of practice
- Regulations for Electrical equipment of buildings (IEE publication)

Surface Installation

Conduit used for in-surface installations should be fixed using saddles or spacer bar saddles. The maximum recommended spacing between saddles is 1.0 metre for horizontal conduit runs and 1.25 metres for vertical conduit runs. Saddles should be fixed no more than 20 cm on either side of the bends or boxes.

As PVC conduit expands with increasing temperatures, it should be able to slide in the saddles, to allow for expansion/contraction movements. In long straight runs, the use of an expansion coupling is recommended every 6 metres to absorb expansion and avoid conduit buckling.

Jointing

Solvent welding is the recommended method of joining conduit into fittings like couplings, adaptors, bends and boxes. Decoduct PVC sealing cement provides a waterproof permanent joint.

Bonding Instructions :

A. Surface Preparation:

Pipes and fittings to be bonded must be clean, dry and free from oil, dirt, moisture and grease.

B. Pipes and Sockets :

- Cut pipe square, remove any burrs from both the inside and outside of the pipe with a knife, file or reamer.
- Ensure product is free from dirt, grease and moisture.
- For proper mating, insert pipe into the full length of the socket.
- Apply an even layer of cement to the pipe and the fitting.
- Immediately push the pipe into the fitting together to the full depth without twisting. Hold in place for 30 seconds and clean off excess cement. Maximum strength is achieved thereafter.

Joints & Couplers

Expansion Couplers are installed with short side coated with solvent cement (DSG2) and the coupler pushed firmly over the conduit to the notch. Expansion side of the coupler should be coated inside with a semi permanent mastic and shall be positioned in such a way that the conduit is mid point to the notch. This will facilitate expansion or contraction of the conduits.

Bending

Bending of conduit up to 25mm diameter can be carried out cold, using the correct bending spring size, according to the diameter and the gauge of the conduit. After inserting the spring, the bend can be made by hand by bending slightly beyond the required angle, and allowing the conduit to recover back to the required position. Bending should not be done too fast and once made, a bend should not be forced backwards, as these actions can lead to conduit or spring damage. According to IEE Regulations, the bend inner radius should not be less than 2.5 times the conduit outside diameter.

For conduit sizes over 25mm diameter, hot bending is required, with the same procedure as cold bending, but with the application of gentle heat just prior to bending. No open flames should be used for heating. Once the conduit is warm, it can be bent around a suitable former, and held there until it cools and sets in position.

General

Once installation is complete, wires can be drawn through the system by using nylon draw tape. PVC is an electrical insulating material, making the use of a separate insulated earth wire essential.

Note: All information is provided as guidance only. Installation should be carried out by a suitable qualified electrician.

Panel Trunking

Rounded wall finger design – no sharp edges

All wall fingers of Decoduct panel trunking have a rounded design with burr-free edges, so that any injury, either to the hands of the user or the insulation of the cables, is prevented.

Holes on fingers for cable retainer insertion

For the bigger sizes of Decoduct panel trunking, holes are provided on one finger every 100 mm, for insertion of a screwdriver to act as a cable retainer, making the wiring faster and easier.

Cable retaining protrusions on wall fingers

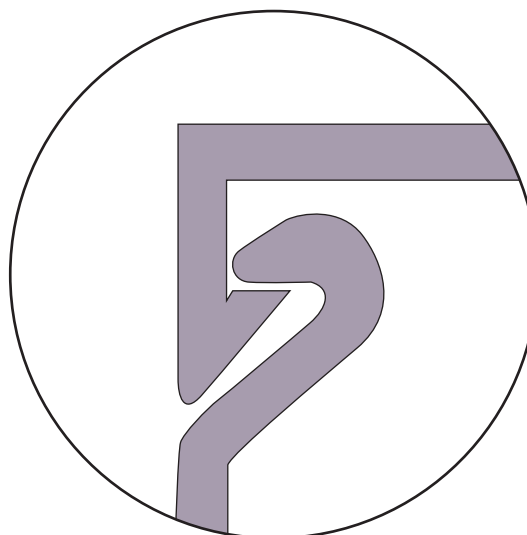
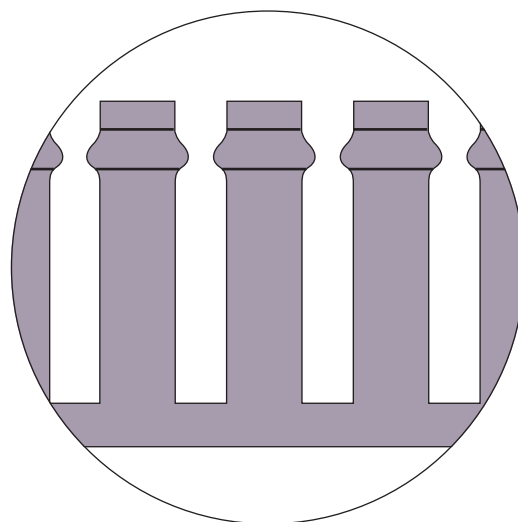
Rounded protrusions at the top of all wall fingers effectively reduce the slot width, for cable retention. For the bigger sizes of Decoduct panel trunking, protrusions are also provided at the centre of wall fingers for easy positioning of exiting cables.

Secure lid closing

The lid closing mechanism is designed for easy lid fixing and removal, but at the same time for secure trunking closing.

Sizes based on 12.5 mm module to DIN 43 660

The dimensions of Decoduct panel trunking are based on steps of 12.5 mm, as required by DIN 43 660. The use of the 12.5 mm module as a basis for sizing makes Decoduct ideal for perfect size interfacing with other DIN 12.5 components.





Panel Trunking

STANDARD EXECUTION

Decoduct panel trunking is classified as follows under clause 6 of EN 50085:

Minimum storage & transport temperature:	- 25°C
Application temperature range:	- 15°C to + 60°C
Flame propagation:	Non-flame propagating
Electrical characteristics:	Insulating

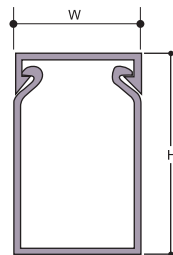
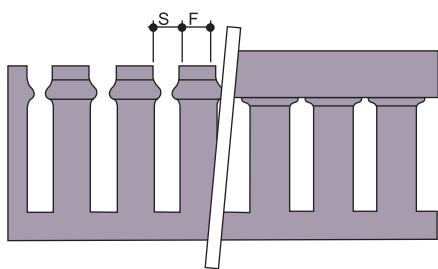
Decoduct panel trunking is supplied in the following standard execution:

Standard length:	2.0 mt.
Standard colour	RAL 7030 Grey
Material:	Impact modified U-PVC

Non-standard executions are available on request, based on reasonable quantity.

DIAGRAMS

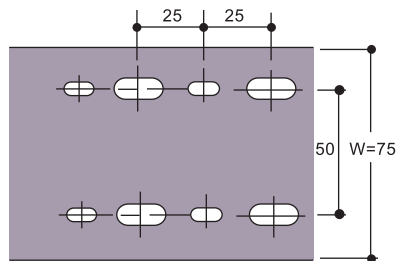
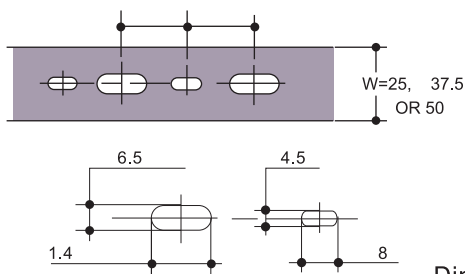
PROFILE DIMENSIONS AND WALL PERFORATIONS



- For dimensions details refer to page 35 and 36

BASE PERFORATION (TO DIN 43 659)

BASE PERFORATIONS (TO DIN 43 659)



Dimensions in mm



Cable Protection Systems

Rigid PVC Cable Tiles

MATERIAL SPECIFICATIONS			
PROPERTY	TEST METHOD	UNITS	VALUE
Density	-	Kg/m ³	1,400
Tensile Strength	BS 2782 (320C)	N/mm ²	48
Elongation At Break	BS 2782 (320C)	%	120
Impact Strength	BS 2782 (359)	KJ/m ²	260
Linear Expansion Coeff.	ASTM D 696	mm/m°C	7x10-5
Hardness	DIN 53505	Shore D	82

Polyethylene Cables Tiles

MATERIAL SPECIFICATIONS			
PROPERTY	TEST METHOD	UNITS	VALUE
Density	-	Kg/m ³	930
Tensile Strength	BS 2782 (320C)	N/mm ²	8.4
Elongation At Break	BS 2782 (320C)	%	230
Impact Strength (Dart)	ASTM D 3029	Kg	5.0
Linear Expansion Coeff.	ASTM 696 - 79	mm/m°C	0.2
Flexular Modulus	BS 2782 (335A)	Mpa	280

Polyethylene Cables Warning Boards & Tapes

MATERIAL SPECIFICATIONS			
PROPERTY	TEST METHOD	UNITS	VALUE
Density	-	Kg/m ³	920
Tensile Strength	ASTM D 882	Kg/cm ²	195
Elongation At Break (Longitudinal)	ASTM D 882	%	350
Elongation At Break (Transverse)	ASTM D 882	%	500
Tape Breaking Strength			
100 mm Width		N	1.95
150 mm Width		N	2.92
250 mm Width		N	4.87



DECODUCT
CABLE MANAGEMENT SYSTEMS

INTERGARD
Cable Protection Systems



EDISON
ELECTRICAL ACCESSORIES



EDISON NANO

HEADQUARTERS

INTERPLAST CO.LTD.

P.O.Box: 4679, Sharjah, UAE

Tel: +971 6 5339090 / 5395577, Fax: +971 6 5336905 / 5395775

E-mail: intrplst@emirates.net.ae / www.edisonelectricalproducts.com

INTERNATIONAL PLASTICS CENTRE LLC

P.O.Box: 270982, Riyadh 11352, Saudi Arabia

Tel: +966 1 4714667 / 4714773, Fax: +966 1 4714669

E-mail: ipc@atheer.net.sa

INTERPLAST UK.LTD.

15 High Street, Inverurie, Aberdeenshire AB51 3QA

Tel: (+44) 01467 629555, Fax: (+44) 01467 672191

E-mail: sales@interplast.co.uk

www.interplast.co.uk

Web site: www.interplast.ae

Group
HARWAL
MANUFACTURING TECHNOLOGIES
www.harwal.net

Supplied by: