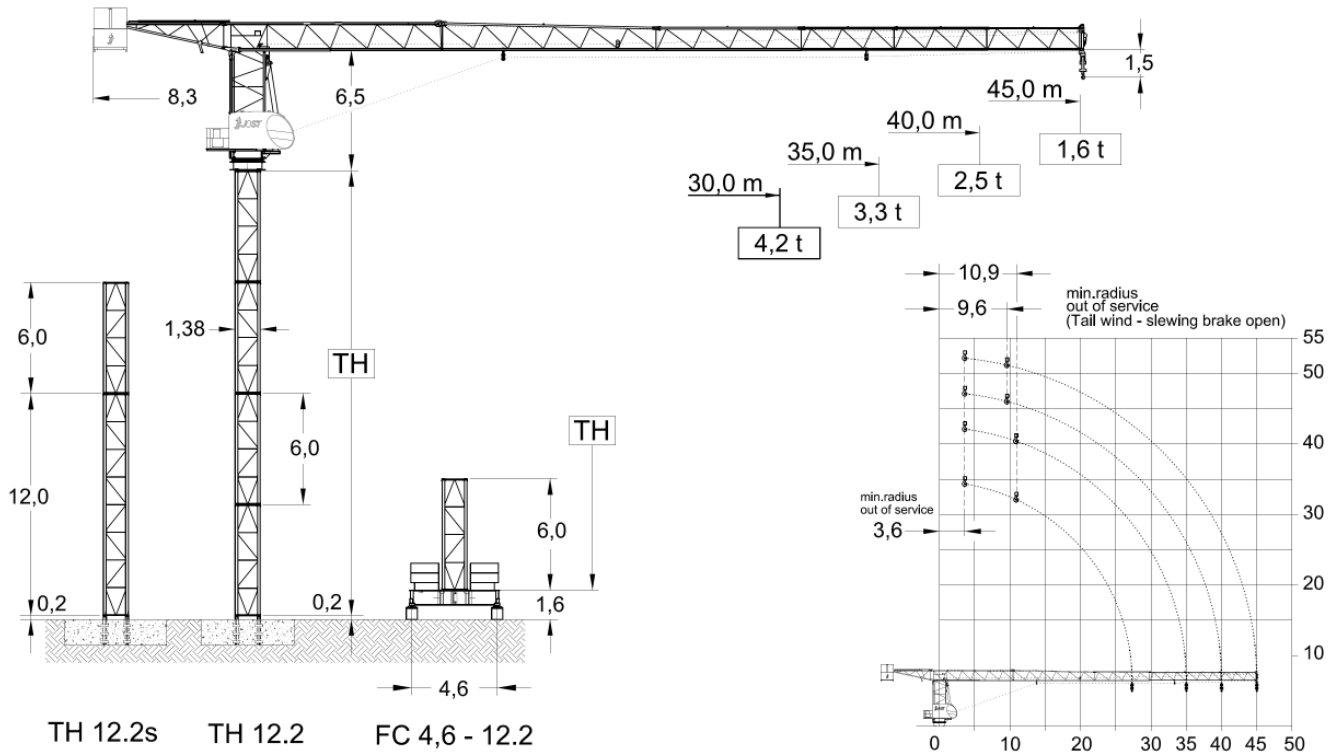


JTL 108.6

Topless luffing crane
Tower TH 12.2



		Foundation		Chassis	
Jib length (m)		30,0 - 35,0	40,0 - 45,0	30,0 - 35,0	40,0 - 45,0
TH	TH 12.2	36,0 m	30,0 m	30,0 m	24,0 m
	TH 12.2s	42,0 m	36,0 m	--	--

Radius & Capacity											
Jib		max Load									
m	rope	t	m	18	20	22	25	30	35	40	45
45		3,0	25,6	3,00	3,00	3,00	3,00	2,52	2,13	1,83	1,60
		6,0	13,3	4,36	3,90	3,53	3,07	2,52	2,13	1,83	1,60
40		3,0	33,9	3,00	3,00	3,00	3,00	3,00	3,00	2,50	
		6,0	17,6	6,00	5,22	4,76	4,15	3,42	2,89	2,50	
35		3,0	35,0	3,00	3,00	3,00	3,00	3,00	3,00	3,00	
		6,0	19,9	6,00	5,94	5,45	4,70	3,91	3,30		
30		3,0	30,0	3,00	3,00	3,00	3,00	3,00	3,00		
		6,0	21,4	6,00	6,00	5,82	5,08	4,20			

Motor	11,0 kW FI	1 x 3,0 kW	2 x 5,0 kW
t / v	2,50 min	0,77 rpm	25,0 m / min
Power requirement		Hoist 22 kW	44 kVA
	Upper part	Hoist 30 kW	53 kVA

Speeds 400 V - 50 Hz / 440 V - 60 Hz							
Hoist unit 22 kW		Frequency inverter					
Pmax		3,0 - 6,0 (to)					
	Load [to]	1,2	1,3	1,5	1,8	2,5	3,0
	v [m/min]	80	78	68	60	46	40
	Load [to]	2,4	2,6	3,0	3,6	5,0	6,0
	v [m/min]	40	39	34	30	23	20
Drum capacity		340,0 m					

Hoist unit 30 kW							
Hoist unit 30 kW		Frequency inverter					
Pmax		3,0 - 6,0 (to)					
	Load [to]	1,2	1,3	1,5	1,8	2,5	3,0
	v [m/min]	116	110	98	86	66	58
	Load [to]	2,4	2,6	3,0	3,6	5,0	6,0
	v [m/min]	58	55	49	43	33	29
Drum capacity		340,0 m					

* Further hoist models available on request.



FEM A3
DIN 15018 H1-B3
TÜV CERT
DIN EN ISO 9001

Edition 02/07. Subject to modification.
Specifications and data not binding.

JOST Cranes GmbH & Co. KG
Wernher-von-Braun-Str. 10
85640 Putzbrunn
GERMANY

FON +49 (89) 456650-70
FAX +49 (89) 36109-334
MAIL info@jostcranes.de
WEB www.jostcranes.de



MTI - LUX S.A.
2a, rue Prince Henri
L-6735 Grevenmacher
Luxemburg

FON +352 26745480
FAX +352 26745483
MAIL mtlux@aol.com
WEB www.mti-lux.com