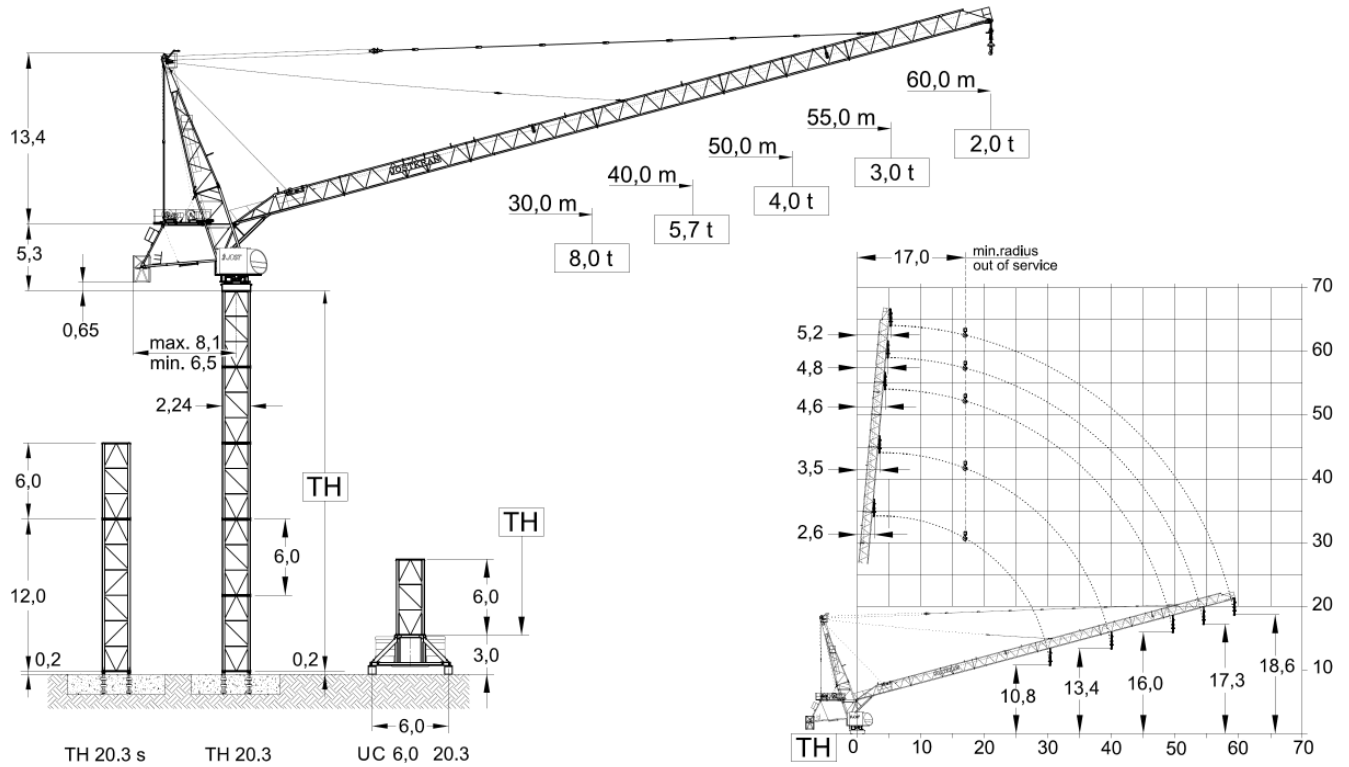


JL 216.16

Luffing crane
Tower TH 20.3



		Foundation		Chassis	
Jib length (m)		30,0 - 40,0	50,0 - 60,0	30,0 - 40,0	50,0 - 60,0
TH	TH 20.3	42,0 m	36,0 m	36,0 m	30,0 m
	TH 20.3s	48,0 m	42,0 m	--	--

Radius & Capacity													
Jib		max Load											
m	rope	t	m	22	25	27	30	35	40	45	50	55	60
60		8,0	16,8	6,09	5,35	4,90	4,36	3,70	3,18	2,79	2,47	2,22	2,00
		--	--	--	--	--	--	--	--	--	--	--	--
55		8,0	22,0	8,00	7,03	6,49	5,81	4,93	4,27	3,76	3,35	3,00	
		--	--	--	--	--	--	--	--	--	--	--	--
50		8,0	26,0	8,00	8,00	7,39	6,65	5,70	5,00	4,43	4,00		
		16,0	11,9	8,77	7,68	7,09	6,35	5,40	4,70	4,13	3,70		
40		0,0	29,0	8,00	8,00	8,00	7,77	6,62	5,70				
		16,0	14,4	10,40	9,08	8,37	7,47	6,32	5,40				
30		0,0	30,0	8,00	8,00	8,00	8,00						
		16,0	15,5	11,13	9,72	8,96	8,00						

Motor	30,0 kW FI	2 x 3,0 kW	4 x 5,0 kW
t / v	2,20 min	0,67 rpm	25,0 m / min
Power requirement Upper part	Hoist 55 / 64 kW		120 kVA
	Hoist 75 kW		134 kVA

Speeds 400 V - 50 Hz / 440 V - 60 Hz							
Hoist unit 55 / 64 kW		Frequency inverter					
Pmax		8,0 - 16,0 (to)					
	Load [to]	1,8	2,4	4,2	5,4	6,6	8,0
	v [m/min]	102	90	66	54	44	36
	Load [to]	3,6	4,8	8,4	10,8	13,2	16,0
	v [m/min]	51	45	33	27	22	18
Drum capacity		480,0 m					

Hoist unit 75 kW		Frequency inverter					
Pmax		8,0 - 16,0 (to)					
	Load [to]	3,6	4,0	5,0	6,0	7,0	8,0
	v [m/min]	96	88	72	62	54	48
	Load [to]	7,2	8,0	10,0	12,0	14,0	16,0
	v [m/min]	48	44	36	31	27	24
Drum capacity		680,0 m					

* Further hoist models available on request.



FEM A3
DIN 15018 H1-B3
TÜV CERT
DIN EN ISO 9001

Edition 02/07. Subject to modification.
Specifications and data not binding.

JOST Cranes GmbH & Co. KG
Wernher-von-Braun-Str. 10
85640 Putzbrunn
GERMANY

FON +49 (89) 456650-70
FAX +49 (89) 456650-71
MAIL info@jostcranes.de
WEB www.jostcranes.de



MTI - LUX S.A.
2a, rue Prince Henri
L-6735 Grevenmacher
Luxembourg

FON +352 26745480
FAX +352 26745483
MAIL mtilux@aol.com
WEB www.mti-lux.com