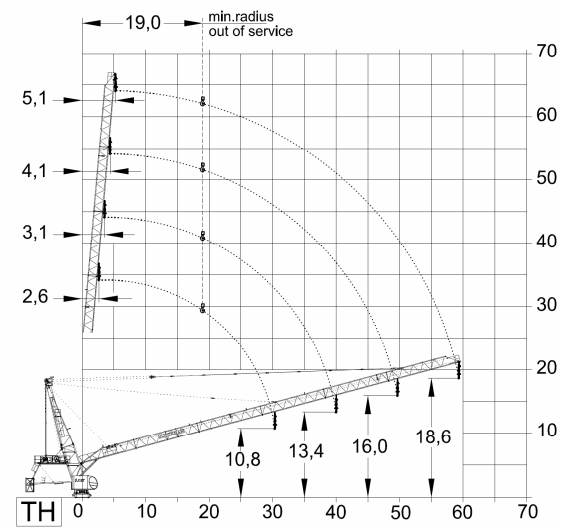
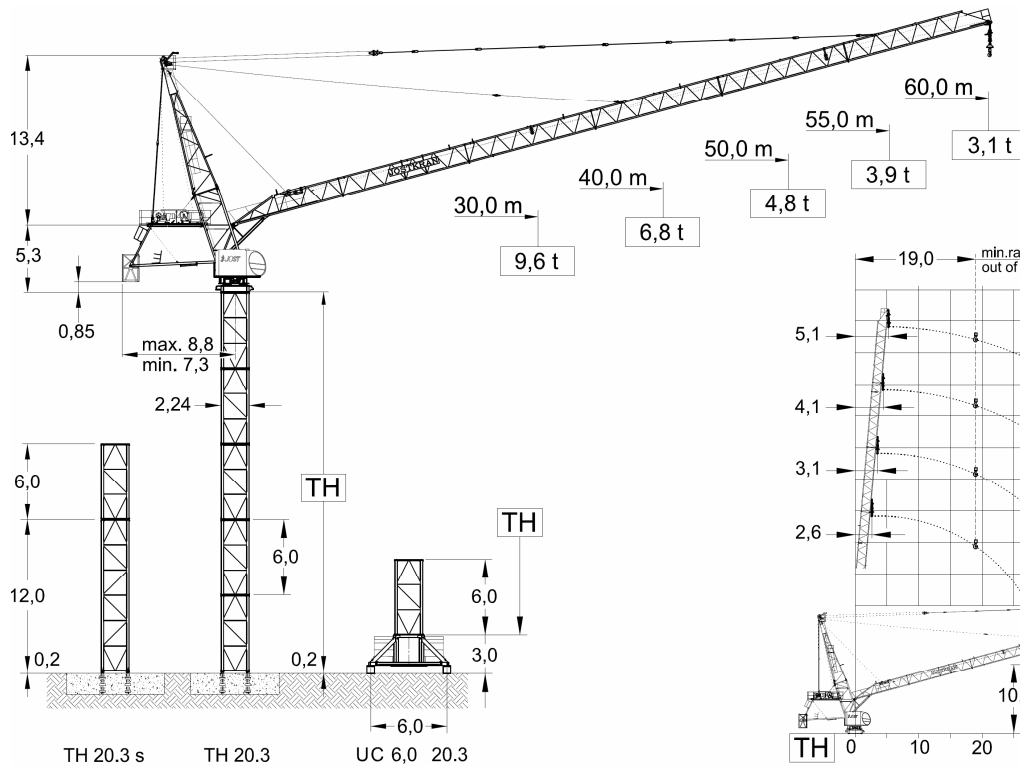


# JL 256.16

Luffing crane  
Tower TH 20.3



		Foundation		Chassis	
Jib length (m)		30,0 - 40,0	50,0 - 60,0	30,0 - 40,0	50,0 - 60,0
TH	TH 20.3	42,0 m	36,0 m	36,0 m	30,0 m
	TH 20.3s	48,0 m	42,0 m	--	--

Radius & Capacity													
Jib		max Load											
m	rope	t	m	20	22	25	30	35	40	45	50	55	60
60		8,0	24,8	8,00	8,00	7,87	6,82	5,94	4,90	4,33	3,83	3,44	3,10
		-	-	-	-	-	-	-	-	-	-	-	-
55		8,0	28,0	8,00	8,00	8,00	7,42	6,32	5,48	4,84	4,33	3,90	-
		-	-	-	-	-	-	-	-	-	-	-	-
50		8,0	30,8	8,00	8,00	8,00	8,00	7,00	6,07	5,37	4,80	-	-
		16,0	15,4	12,13	10,98	9,62	7,90	6,70	5,77	5,07	4,50	-	-
40		8,0	34,3	8,00	8,00	8,00	8,00	7,81	6,80	-	-	-	-
		16,0	17,2	13,62	12,31	10,76	8,86	7,51	6,50	-	-	-	-
30		8,0	30,0	8,00	8,00	8,00	8,00	8,00	8,00	-	-	-	-
		16,0	18,5	14,71	13,30	11,65	9,60	-	-	-	-	-	-

Motor	30,0 kW FI	2 x 4,4 kW	4 x 5,0 kW
t / v	2,50 min	0,67 rpm	25,0 m / min
Power requirement	Upper part	Hoist 55 / 64 kW	125 kVA
		Hoist 90 kW	156 kVA

Speeds 400 V - 50 Hz / 440 V - 60 Hz							
Hoist unit 55 / 64 kW				Frequency inverter			
Pmax		8,0 - 16,0 ( to )					
	Load [to]	1,8	2,4	4,2	5,4	6,6	8,0
	v [m/min]	102	90	66	54	44	36
	Load [to]	3,6	4,8	8,4	10,8	13,2	16,0
	v [m/min]	51	45	33	27	22	18
Drum capacity		480,0 m					

Hoist unit 75 kW							
Hoist unit 75 kW				Frequency inverter			
Pmax		8,0 - 16,0 ( to )					
	Load [to]	3,6	4,0	5,0	6,0	7,0	8,0
	v [m/min]	96	88	72	62	54	48
	Load [to]	7,2	8,0	10,0	12,0	14,0	16,0
	v [m/min]	48	44	36	31	27	24
Drum capacity		680,0 m					

\* Further hoist models available on request.



FEM A3  
DIN 15018 H1-B3  
TÜV CERT  
DIN EN ISO 9001

Edition 02/07. Subject to modification.  
Specifications and data not binding.

**JOST Cranes GmbH & Co. KG** FON +49 (89) 456650-70  
Wernher-von-Braun-Str. 10 FAX +49 (89) 456650-71  
85640 Putzbrunn MAIL info@jostcranes.de  
GERMANY WEB www.jostcranes.de



**MTI - LUX S.A.** FON +352 26745480  
2a, rue Prince Henri FAX +352 26745483  
L-6735 Grevenmacher MAIL mtlux@aol.com  
Luxembourg WEB www.mti-lux.com