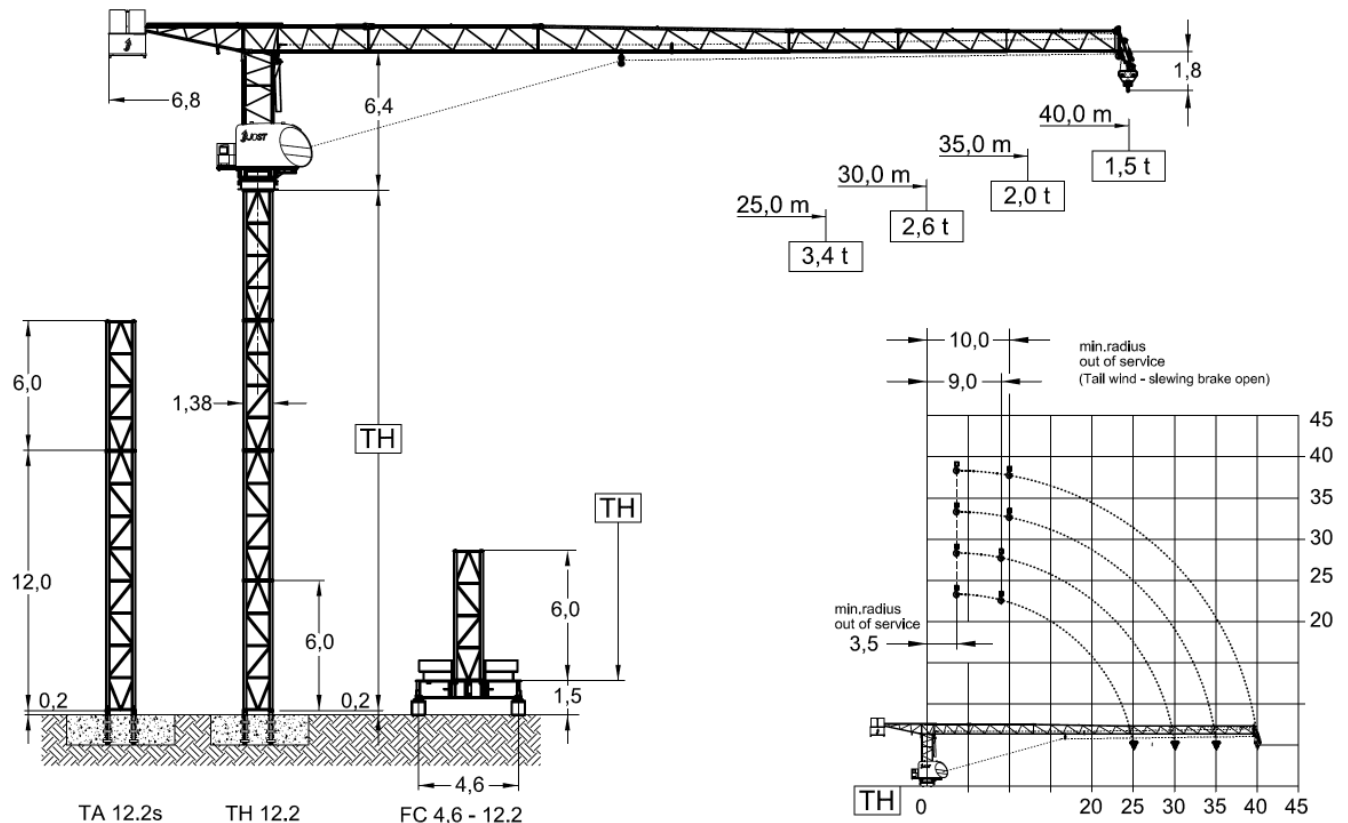


JTL 68.4

Topless crane
Tower TH 12.2



		Foundation		Chassis	
Jib length (m)		25,0 - 30,0	35,0 - 40,0	25,0 - 30,0	35,0 - 40,0
TH	TH 12.2	42,0 m	36,0 m	30,0 m	24,0 m

Radius & Capacity											
Jib		max Load									
m	rope	t	m	15	18	20	22	25	30	35	40
40		4,0	15,9	4,00	3,52	3,15	2,85	2,49	2,05	1,74	1,50
35		4,0	18,2	4,00	4,00	3,62	3,28	2,86	2,36	2,00	
30		4,0	19,9	4,00	4,00	3,98	3,60	3,15	2,60		
25		4,0	21,4	4,00	4,00	4,00	3,89	3,40			

Motor	7,5 kW FI	1 x 2,0 kW	2 x 3,0 kW
t / v	2,20 min	0,77 rpm	25,0 m / min
Power requirement Upper part		Hoist 15 kW	33 kVA
		Hoist 22 kW	42 kVA

Speeds 400 V - 50 Hz / 440 V - 60 Hz							
Hoist unit 15 kW		Frequency inverter					
Pmax		4,0 t					
	Load [to]	1,8	2,0	2,5	3,0	3,5	4,0
	v [m/min]	40	38	32	26	22	20
Drum capacity		180,0 m					

Hoist unit 22 kW							
Hoist unit 22 kW		Frequency inverter					
Pmax		4,0 t					
	Load [to]	1,9	2,0	2,5	3,0	3,5	4,0
	v [m/min]	60	58	46	39	34	30
Drum capacity		180,0 m					

* Further hoist models available on request.



FEM A3
DIN 15018 H1-B3
TÜV CERT
DIN EN ISO 9001

Edition 08/07. Subject to modification.
Specifications and data not binding.

JOST Cranes GmbH & Co. KG
Wernher-von-Braun-Str. 10
85640 Putzbrunn
GERMANY

FON +49 (89) 456650-70
FAX +49 (89) 456650-71
MAIL info@jostcranes.de
WEB www.jostcranes.de



MTI - LUX S.A.
2a, rue Prince Henri
L-6735 Grevenmacher
Luxemburg

FON +352 267454-80
FAX +352 267454-83
MAIL mtlux@aol.com
WEB www.mti-lux.com