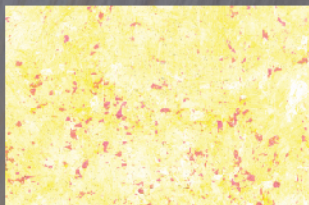
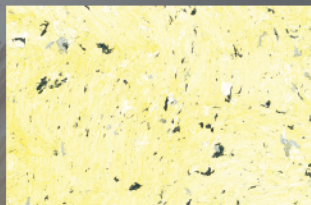




WBZ - 12.5



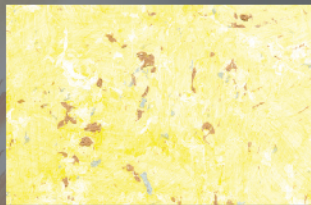
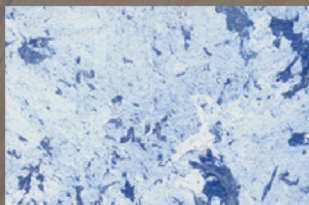
WM - 12.8 / L



WBS - 12.7



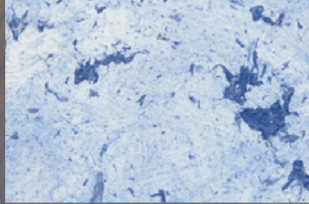
WND - 12.6



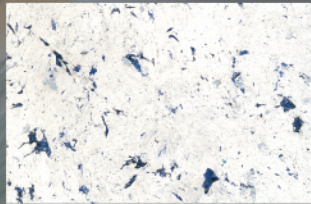
WSZ - 12.4



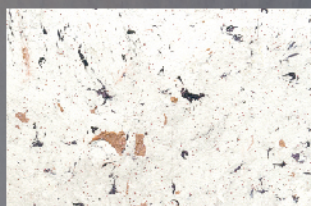
WBS - 225 / H



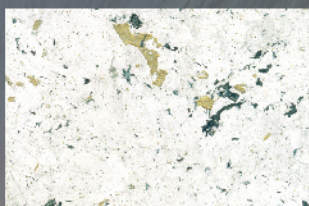
WV-5822/B



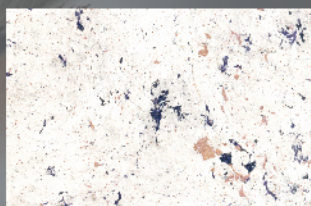
WBS - 221 / S



WBZ - 215 / R



WBD - 235 / G



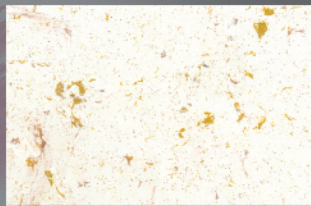
WBZ - 219 / Z



WBD - 205 / E



WB2-10011/S



WYZ - 415 / Z

General Description

MAS LINOL is a water base and transpiring decorative paint with particular and beautiful stained, antique and classic effect. Easy application helps to redecorate houses, villas, shops, flats etc.

Application

Apply the paint using the special brush in oblique direction from the top to bottom, alternating the strokes from right to left, in the same direction wait 10 - 15 minutes until the smooth parts is dried, rough is still wet. smooth the surface with the special spatula following the used direction. after 4 - 5 hours apply another coat with the same technique following the same direction, with another direction you can obtain another.

LINOL METALLIC is the metallic version which is ready for use in combination with the desired NCS base coat. **LINOL SPECIAL** is the brilliant version which is a combination of several NCS base coats and different options of linol special as shown in the catalogue.

LINOL MASPERLATO is the pearled version which is obtained by applying an NCA base coat topcoated by the white flakes (linol white) and finally with a layer of pearled coat (linol masperlato) choosing from the combinations offered by the catalogue. **LINOL MULTI** is having multicolor flakes and it is ready for use.

Coverage: 8-10 sq.m. per litre
Tools: brush, sponge, spatula.
For more informations please check the technical data sheet.

Descrizione generale

MAS LINOL è una vernice decorativa traspirante a base acqua che garantisce degli effetti satinati, antichi e classici bellissimi e particolari, è facile da applicare ed ottima per decorare case, ville, negozi, appartamenti ecc.

Applicazione

Applicare la vernice utilizzando un pennello speciale, spargendo i fiocculi in varie direzioni ed aspettare 10 - 15 minuti finché le parti lisce siano asciutte. Lisciare la superficie con il frattazzino in plastica seguendo la direzione in precedenza utilizzata. Dopo 4 - 5 ore applicare un altro strato con la stessa tecnica e la stessa direzione. Cambiando direzione è possibile ottenere un altro effetto.

Il **LINOL METALLIC** ad effetto metallizzato è invece pronto per l'uso e può essere abbinato ad un fondo NCS. Il **LINOL SPECIAL** è un prodotto ad effetto cangiante che può dare diverse combinazioni in base al tipo di prodotto in abbinamento a differenti fondi come mostrato dal catalogo. Il **LINOL MASPERLATO** è ad effetto perlato ed è composto da una base NCS sulla quale si vanno ad applicare i fiocculi (linol white) per finire con una mano di prodotto perlato (linol mas perlato) come indicato dal catalogo. **LINOL MULTI** è la versione con fiocculi multicolore ed è pronto all'uso.

Resa: 8 - 10 m2/litro
Strumenti: pennello, spugna, spatula.
Per maggiori informazioni vedere la scheda tecnica.

www.mas-paints.com



FACTORY
PHONE: +971 6 5311777
FAX : +971 6 5311330
E mail: masuae@eim.ae

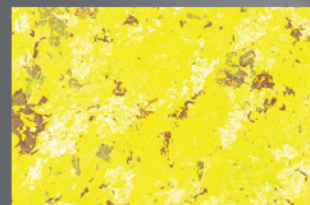
Showroom
SHARJAH UNITED ARAB EMIRATES
PHONE: +971 6 5328533
+971 6 5344880
FAX: +971 6 5328610
P.O.BOX 23085
Website: www.mas-paints.com
info@mas-paints.com



M.A.S. Srl
VIALE DELLA VITTORIA
60123 ANCONA
ITALY
Te.: +39 071 2071189
Fax: +39 071 2070054
www.masexp.com
info@masexp.com



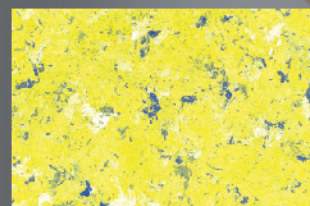
LINOL MULTI



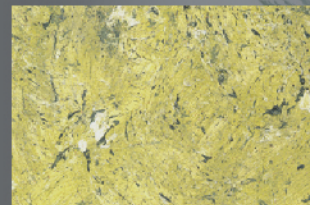
WN-1100/G



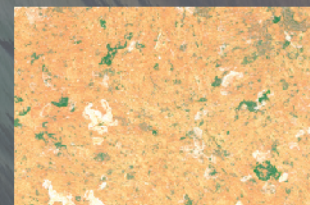
WY-11277/G



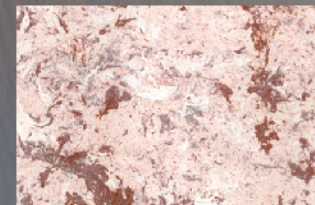
WV-10900/B



WB-10843/R



WG-10860/G



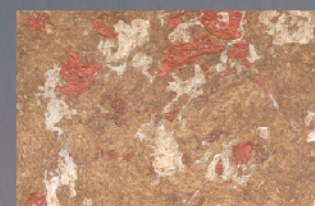
WN-3931/R



WB-2255/G



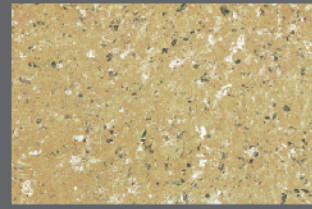
WY-2100/R



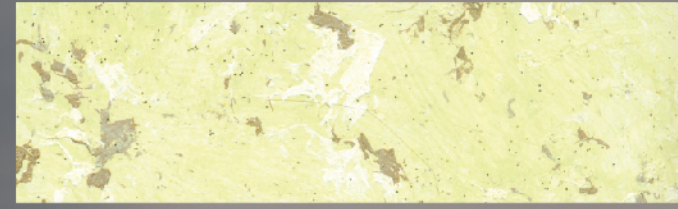
WC-8571/G



Linol Multi



LINOL WG (4kg)
Toner 10898 (120ml)



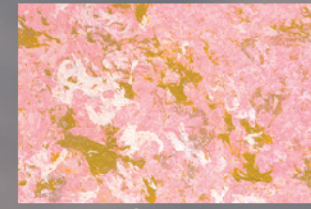
LINOL WD
Toner 11310/L



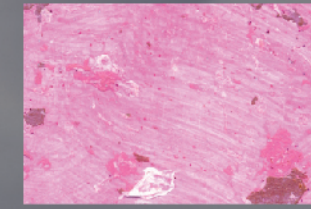
LINOL WDZ
Toner 8730



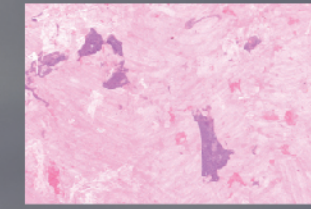
LINOL WB (4kg)
Toner 3834 (120ml)



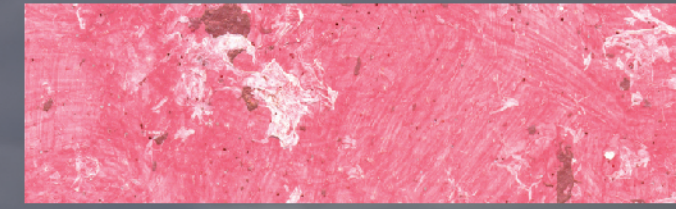
LINOL WY (4kg)
Toner 3929 (120ml)



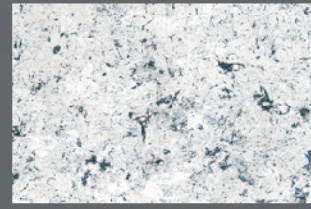
LINOL WRM
Toner 4290/M



LINOL WMP
Toner 4280/U



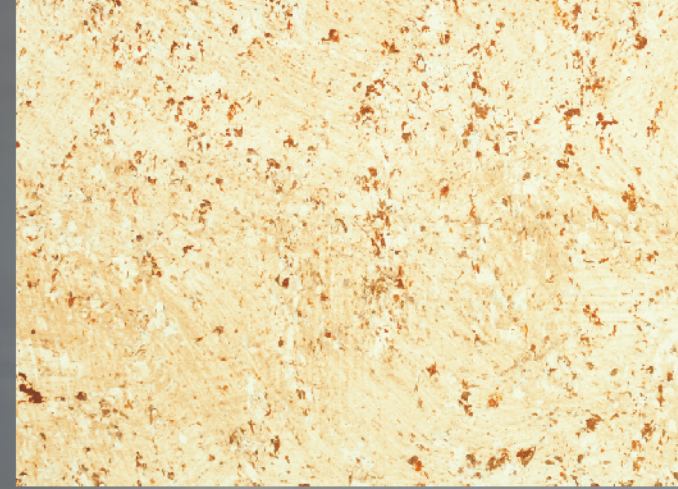
LINOL WR
Toner 3940/R



LINOL WB2



LINOL WBG (4kg)
Toner 12-2(120ml)



LINOL WY (4kg)
Toner 10918 (120ml)



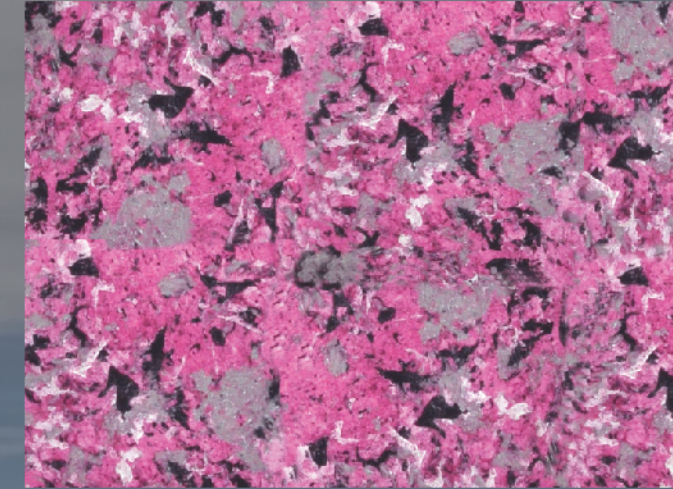
LINOL WY (4kg)
Toner 3836 (120ml)



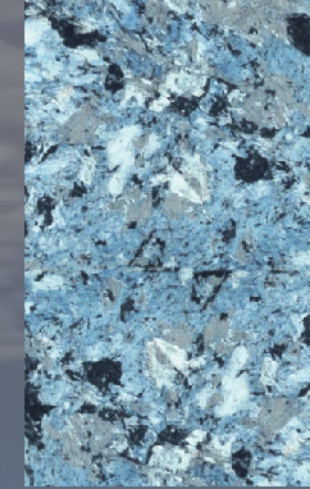
LINOL WB (4kg)
Toner 3825 (120ml)



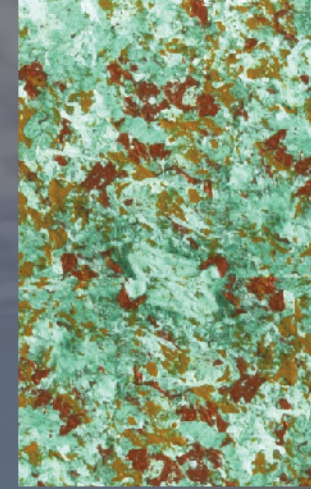
LINOL WYC (4kg)
Toner 10-2 (120ml)



LINOL WBS (4kg)
Toner 18-1(120ml)



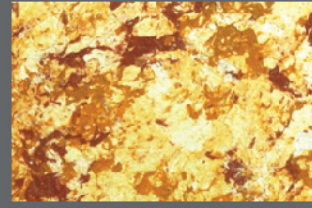
LINOL WBS (4kg)
Toner 25-2 (120ml)



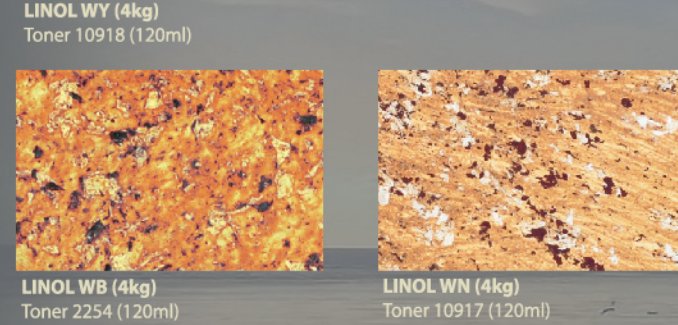
LINOL WYC (4kg)
Toner 20-3 (120ml)



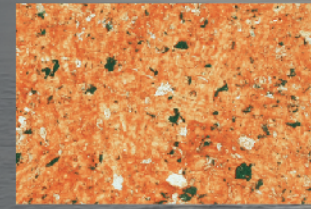
LINOL WBS (4kg)
Toner 26-2 (120ml)



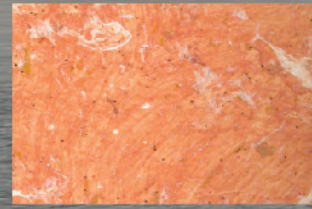
LINOL WYC (4kg)
Toner 12-2 (120ml)



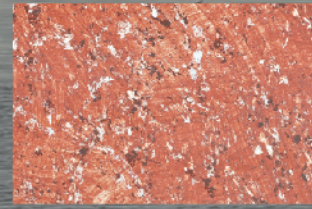
LINOL WB (4kg)
Toner 10842 (120ml)



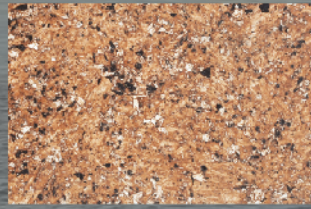
LINOL WV (4kg)
Toner 10899 (120ml)



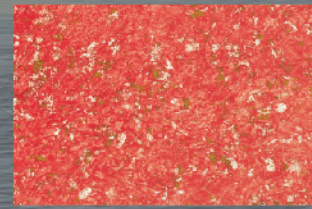
LINOL WG (4kg)
Toner 10859 (120ml)



LINOL WN (4kg)
Toner 2290/Z



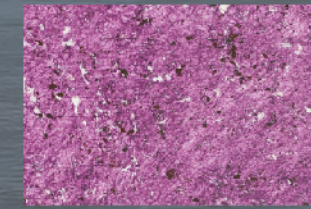
LINOL WBG (4kg)
Toner 14-1 (120ml)



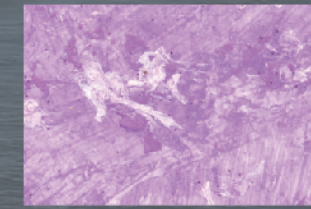
LINOL WBG (4kg)
Toner 15-1 (120ml)



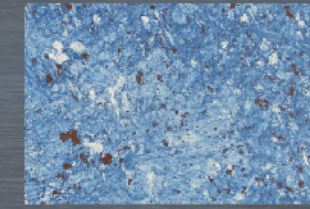
LINOL WV (4kg)
Toner 3814 (120ml)



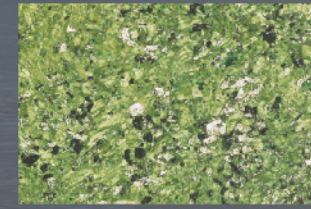
LINOL WNZ (4kg)
Toner 10-1 (120ml)



LINOL WNZ (4kg)
Toner 23-1 (120ml)



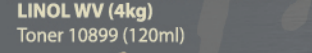
LINOL WN (4kg)
Toner 4267 (120ml)



LINOL WN (4kg)
Toner 5821 (120ml)



LINOL WN (4kg)
Toner 6635 (120ml)



LINOL WN (4kg)
Toner 3835 (120ml)



LINOL WB (4kg)
Toner 8570 (120ml)



LINOL WB (4kg)
Toner 8570 (120ml)



LINOL WY (4kg)
Toner 3813 (120ml)



LINOL WD (4kg)
Toner 3928 (120ml)



LINOL WN (4kg)
Toner 4214 (120ml)



LINOL WN (4kg)
Toner 4285/P



LINOL WN (4kg)
Toner 5700 (120ml)



LINOL WN (4kg)
Toner 6525 (120ml)



LINOL WB (4kg)
Toner 10916 (120ml)



LINOL WB (4kg)
Toner 10916 (120ml)



LINOL WB (4kg)
Toner 10916 (120ml)

Linol Multi