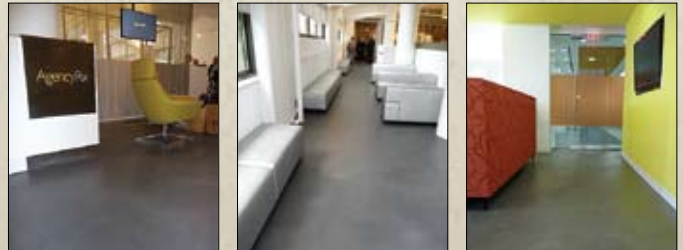


## Päram 5500

CAC based self-leveling concrete

Päram 5500 is the ultimate overlay/topping for fast track resurfacing, smoothing or leveling of indoor concrete substrates. It is a calcium aluminate cement based product that is self-leveling and self-curing. Päram 5500 can be applied from a 1/4" to 1 1/2" thickness in one operation and up to a 5" thickness with the addition of appropriate aggregate. Päram 5500's calcium aluminate based formula creates an excellent bond to substrates and can be installed indoors over concrete and certain non-porous surfaces like ceramic tile. It provides a hard, flat, smooth surface for warehouses, utility rooms and light manufacturing.

Päram 5500 provides a surface that can accept various decorative concrete toppings. 3 to 4 hours after its application ceramic tiles and natural stone can be installed. Cement based overlays, skim coats, concrete dyes, epoxy coatings and finished floor coverings like VCT, vinyl sheet, rubber and engineered wood plank can be installed after 24 hours. Please consult with a düraamen representative for specifics about your particular flooring project.



### advantages

- Rapid early strength—accepts foot traffic in 3–4 hours and moisture sensitive floor covering in 24 hours
- Install in the evening and reopen for business the next morning... virtually no down-time
- No troweling required—it is self-leveling. Very fluid, ideal for pouring and pumping
- Superior bond to various types of substrates
- Contains no protein additives—no gypsum
- Applications from 1/4" to 1 1/2" without any additives and up to 5" with aggregates—can be tapered to meet existing elevations
- Maintains workability (healing properties) for 25 minutes (depending upon ambient conditions)
- Does not promote the growth of mold or mildew
- Very strong—5500psi compressive strength—can be sealed and used as wear surface
- Accepts solvent based dyes giving various color options



visit: [duraamen.com](http://duraamen.com) or call: 1.866.835.6595

### technical data

Density	120lb/ft <sup>3</sup>
Mixing Ratio	5.5–5.75 quarts per 50lb bag
Coverage	25ft <sup>2</sup> /bag
Flammability (ASTM E84)	
Flame Spread	0
Fuel Contribution	0
Smoke Development	0
Compressive Strength (ASTM C 109)	
4 hours	1000psi
24hours	3000psi
7 days	4500psi
28 days	5500ps
Flexural Strength	1100psi
Set Times (ASTM C191)	
Working Time	25 min (depending on temp.)
Initial Set	1.5hours
Final Set	2 hours

# düraamen

engineered to perform

## Päram 5500

CAC based self-leveling concrete

**Here's a unique cost saving application for thousands of properties nationwide.**

Mike Hollohan of Custom Stone Manufacturing provided new kitchen flooring in a Houma Louisiana residence.

The product was a self leveling concrete applied 3/8 inch thick right over existing ceramic tile. The product used was Päram 5500 from düraamen

After the self leveling concrete was applied and cured, the floor was stained using DESO

Dyes in Salmon and Burlywood. Then the floor was sealed with a coat of Perdure A01 ( a solvent based acrylic sealer) to lock the dye, one coat of Perdure E32 (water based epoxy sealer) and finally one coat of Perdure U46 (water based polyurethane sealer).

The kitchen flooring project in Houma, Louisiana only took a few days. The finished result saved the owner thousands of dollars and countless hours searching for solutions to a potentially complicated project.

*Custom Stone Manufacturing  
Houma, LA*

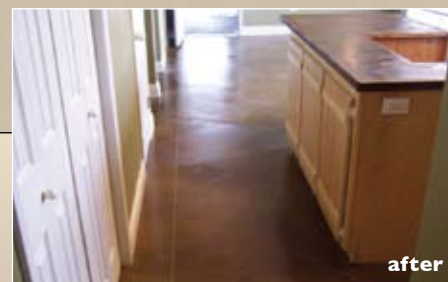
To get help with your next project or to learn more about Päram 5500 and düraamen's other quality products please visit our website or call us at the URL and toll free number listed below.

Düraamen™ Building & Allied Products, Inc.  
924 Bergen Avenue, Unit 103  
Jersey City, NJ 07306

visit: [duraamen.com](http://duraamen.com)  
or call: **1.866.835.6595**



before



after