

AMPERA

LED SOLUTION FOR AN
OPTIMISED INVESTMENT



owlet



QUALITY BY DESIGN

EFFICIENT

VERSATILE

SUSTAINABLE



Schröder



AMPERA

THE OBVIOUS CHOICE FOR ROAD AND URBAN LED LIGHTING



Evaluating the added value of each component.
 Taking care of every detail.
 Removing the unnecessary.
 Never compromising on quality.
 These were the challenges faced by our development team to create the ultimate range of LED luminaires.
 For LED road lighting, the AMPERA is now the obvious choice.



| PEDESTRIAN AREAS | STREETS | | ROADS | | |
|-------------------------------|---------------------|---|----------------|-------------|--------------------------|
| Streets, paths and bike paths | Residential streets | Shared zones, commercial streets in urban areas | Rural roads | Urban roads | Motorways and ring roads |
| | | | | | |
| | | | HID substitute | | |
| <45/50W | >45/50W | <150W | <250W | >250W | >250W |



Ampera Mini



Ampera Midi



Ampera Maxi



3 sizes for flexibility and aesthetic consistency

Lenso Flex 2
9 photometries and multiple driving currents

Wide range of lumen packages from 1,200 up to 32,600 lumen



ThermiX®: withstands high temperatures (Ta 50°C)



IP 66 tightness level
IK 09 Impact resistance

Back Light Control system (optional)

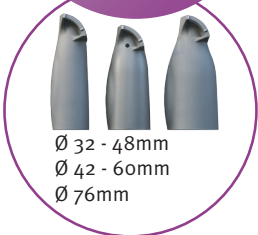
FutureProof: easy replacement of the photometric engine and gear compartment (tool free opening)



Universal mounting piece (side-entry and post-top)

Mounting with two separated parts for easy installation

On-site adjustable inclination angle



Ø 32 - 48mm
Ø 42 - 60mm
Ø 76mm



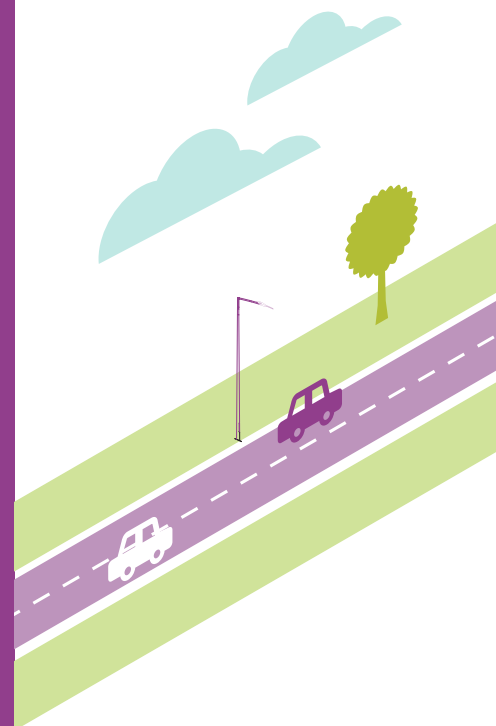
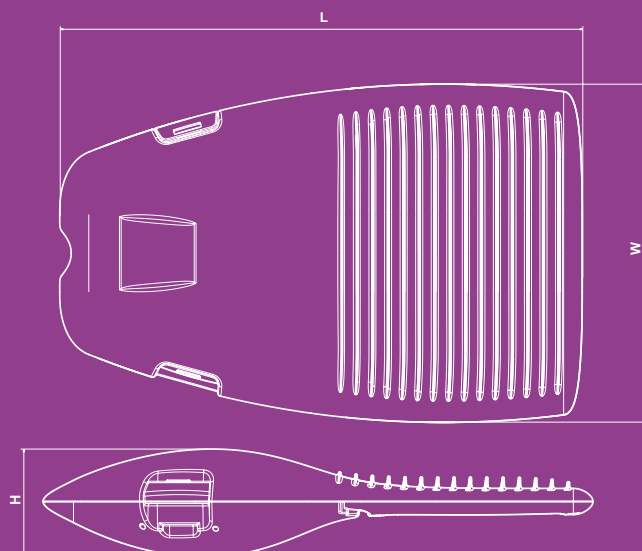
KEY CHARACTERISTICS

| | | | |
|--|--|-------------------------------------|--------------------------------------|
| Installation height | 4 to 12m | | |
| Lumen package range (nominal LED flux) (*) | Mini 1,200 to 6,100lm | Midi 4,800 to 16,300lm | Maxi 12,000 to 32,600lm |
| Luminaire power consumption | Mini 10 to 55W | Midi 36 to 139W | Maxi 86 to 279W |
| Colour temperature | Cool, neutral or warm white | | |
| Optical compartment tightness level | IP 66 (**) | | |
| Control gear tightness level | IP 66 (**) | | |
| Impact resistance (glass) | IK 09 (***) | | |
| Nominal voltage | 120 - 277V - 50 - 60Hz | | |
| Electrical class | EU I or II (**) | US 1 | |
| Weight | Mini 7.8kg | Midi 11.5kg | Maxi 18.1kg |
| Materials | | | |
| Body | High-pressure die-cast aluminium | | |
| Protector | Glass | | |
| Colour | AKZO grey 900 sanded Any other RAL or AKZO colour upon request | | |

(*) The nominal flux is an indicative LED flux @ t_j 25°C based on LED manufacturer's data. The real flux output of the luminaire depends on environmental conditions (e.g. temperature and pollution) and the optical efficiency of luminaire. Nominal flux depends on the type of LED in use and likely to change in accordance with the continuous and rapid developments in LED technology. To follow the progress of the luminous efficiency of the LEDs used, please visit our website.

(**) according to IEC - EN 60598 - (***) according to IEC - EN 62262

| | Mini | Midi | Maxi |
|---|-------------|-------------|-------------|
| L | 583mm | 674mm | 900mm |
| W | 340mm | 436mm | 438mm |
| H | 90mm | 132mm | 135mm |



Consult the Ampera product sheets for more technical information:
www.schreder.com

AMPERA

A PROFITABLE INVESTMENT

The Ampera range sets a new benchmark in LED lighting with performing and flexible solutions that lead to the shortest payback time. With its tremendous efficiency, its long lifespan and its limited maintenance requirements, the Ampera range enables you to minimise your Total Cost of Ownership.

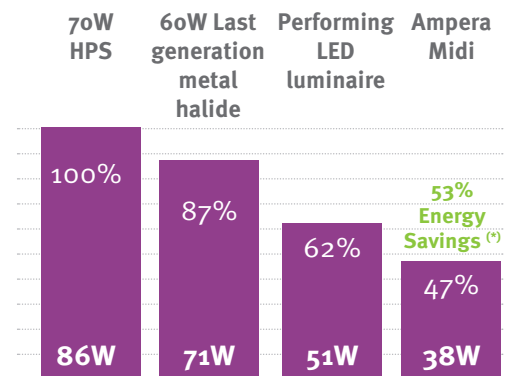
LUMINAIRE SPACING: 37M

ME5 CLASSIFIED ROAD

ROAD WIDTH: 7M

HEIGHT: 8M

ENERGY SAVINGS



(*) Additional savings can be generated by integrating Owllet smart control systems such as dimming or remote management.

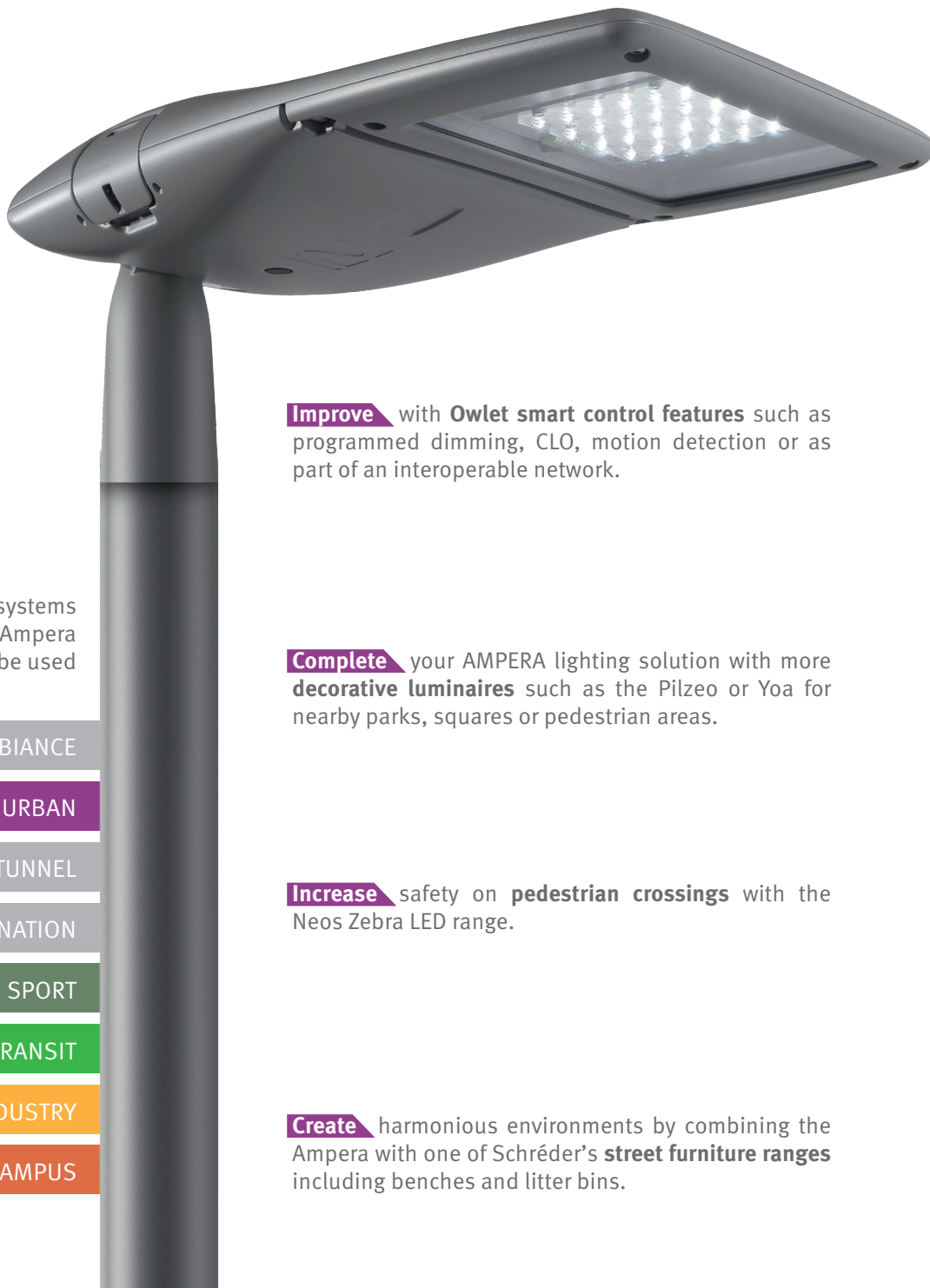
| | CEN ME5 REQUIREMENTS | LUMINAIRE FITTED WITH 70W HIGH-PRESSURE SODIUM LAMP | LUMINAIRE FITTED WITH 60W LAST GENERATION METAL HALIDE LAMP | PERFORMING LED LUMINAIRE | AMPERA MIDI 48 LEDS POWER ADJUSTED (*) |
|--|----------------------|---|---|--------------------------|--|
| Luminaire power consumption (W) | - | 86 | 71 | 51 | 38 |
| Spacing between luminaires (m) | - | 37 | 37 | 37 | 37 |
| Average luminance (cd/m ²) | At least 0.50 | 0.53 | 0.53 | 0.71 | 0.53 |
| Global uniformity - U ₀ (%) | At least 35 | 48 | 36 | 45 | 40 |
| Longitudinal uniformity - U _l (%) | At least 40 | 73 | 68 | 75 | 80 |
| Glare - TI (%) | Less than 15 | 12.3 | 12.6 | 8.2 | 11.1 |
| Power consumption per km (W) | - | 2214 | 1917 | 1431 | 1033 |

(*) Driving current optimised for ME5 specifications.

AMPERA

THE CENTREPIECE OF A COMPLETE SOLUTION

The Ampera range strengthens Schröder's position as the leader in complete and cost effective LED solutions.



Improve with **Owlet smart control features** such as programmed dimming, CLO, motion detection or as part of an interoperable network.

Complete your AMPERA lighting solution with more **decorative luminaires** such as the Pilzeo or Yoa for nearby parks, squares or pedestrian areas.

Increase safety on **pedestrian crossings** with the Neos Zebra LED range.

Create harmonious environments by combining the Ampera with one of Schröder's **street furniture ranges** including benches and litter bins.

Ecosystems where Ampera can be used

AMBIANCE

ROAD & URBAN

TUNNEL

ILLUMINATION

SPORT

TRANSIT

INDUSTRY

CAMPUS



PILZEO



YOA



NEOS ZEBRA LED

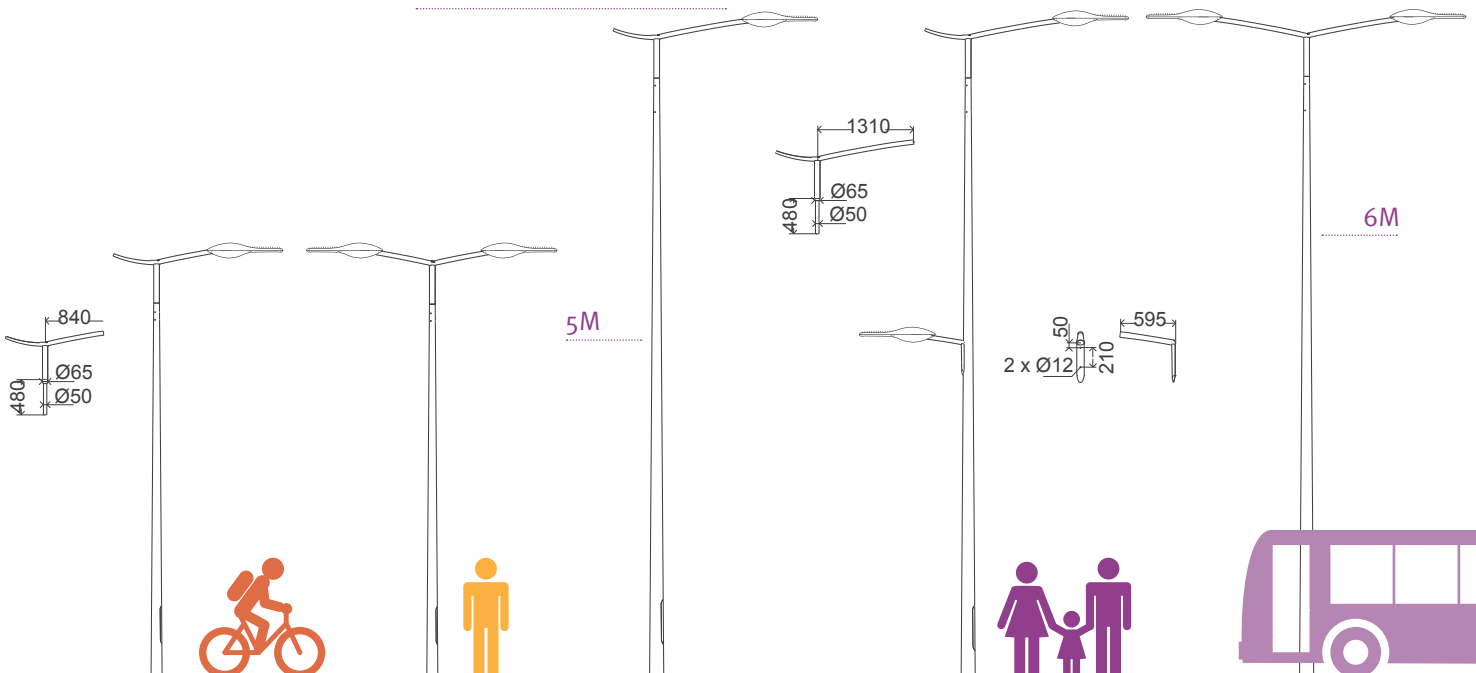




ANDO BRACKETS AND POLES

Combine the Ampera with a choice of **brackets and poles** to design your complete lighting points.

10M





SAFETY



WELL-BEING



SUSTAINABILITY



SAVINGS



SOLUTIONS



Schröder



www.schreder.com