

BORA



BORA



BORA, DESIGN AND SAFETY IN A SINGLE COLUMN

The Bora family of bollards, available in 4 sizes and fitted with LEDs integrated in a perforated structure, constitutes a highly original mode of expression. By day, the design and pure form of the bollards make a distinctive statement. Once night has fallen, they combine aesthetics and functionality. The tallest model (3 metres) facilitates facial recognition, thereby creating an atmosphere of safety. Visual comfort is created through a smart mix of white and blue sources distributed up and down the column.

Colour: grey painted aluminium (reference: Soprano 5)

Other colours on request



Maxi
3,00 m
Ø 115 mm



Midi
1,10 m
Ø 115 mm



Mini
0,60 m
Ø 115 mm



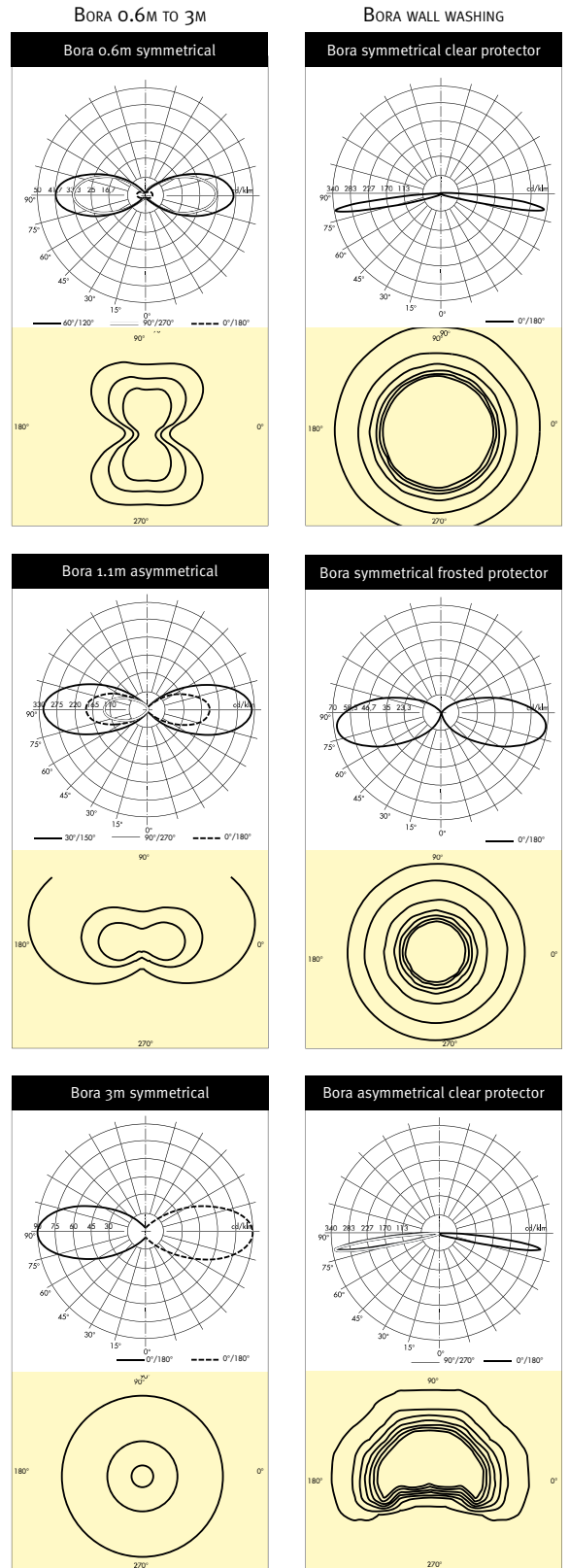
Micro
0,25 m
Ø 160 mm

BORA



Design: Michel Tortel

LIGHT DISTRIBUTION



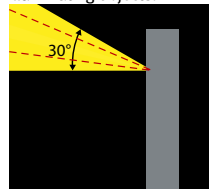
CHARACTERISTICS – BOLLARDS

- Optical compartment tightness level: IP 67^(*)
- Control gear tightness level: IP 67^(*)
- Impact resistance: IK 10^(**)
- Nominal voltage: 230 V
- Electrical class: I^(*)

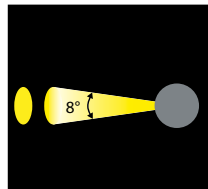
^(*) according to standard IEC - EN 60598
^(**) according to standard IEC - EN 62262

Every product in the Bora range is available with a symmetrical and asymmetrical light distribution

Illuminating objects:

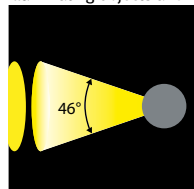


Adjustable floodlight (4 LEDs)
Adjustable on site

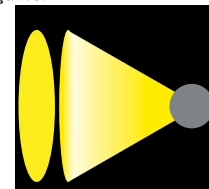


Narrow beam (2 x 4°)

Illuminating objects and façades:



Wide beam (2 x 23°)



Extensive beam



MINIMAL CONSUMPTION

The Bora bollards contain high-power white - 4500K (62 lm/W) and blue LEDs (other colours available on request). The energy consumption of the LEDs is as minimalist as the design of the Bora: 12W for the Bora 0.25m to 33W for the Bora 3m.

Thanks to a "presence detector" and dimming, as an option, the light can be reduced to minimise energy consumption. In fact, during the night, LED electronics make it possible to maintain a light that is constantly reduced to a minimum. Passers-by enter a reassuring path bathed in blue while, as they advance, the white light shows the way.

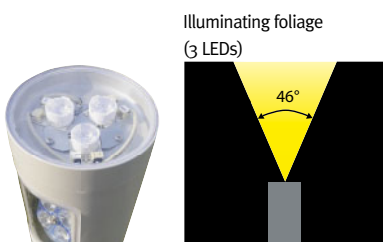


MEETING OTHER NEEDS

The Bora bollards are available in different heights from 0.25m to 3m. A wall unit, which can also be attached at a lower level to the rear of a traditional lighting column, completes the range.

FOR A COMPLETE SOLUTION

As an option, the bollard can have one or two adjustable and stackable floodlights fitted at the top of the column. The bollards can thus be used to create emphasis and highlight architectural elements.



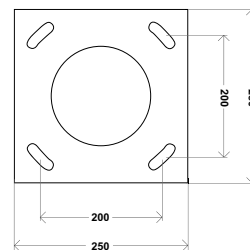
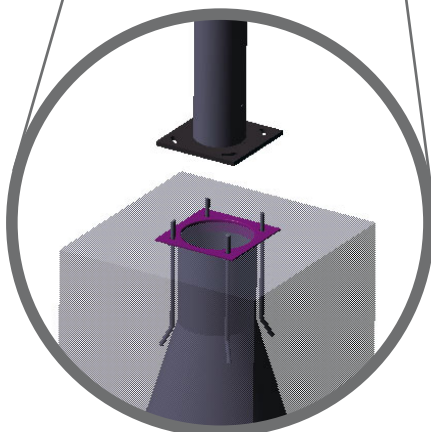
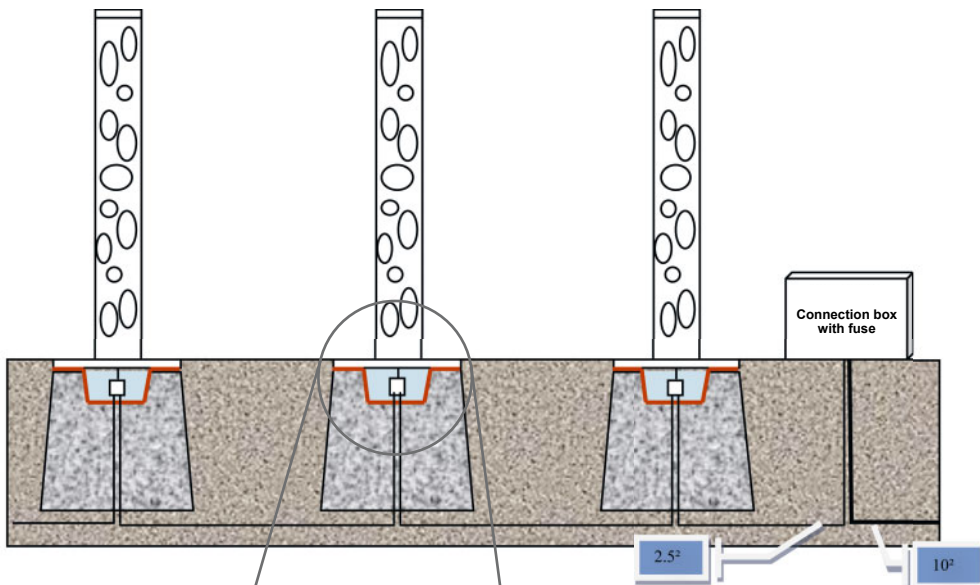
BORA

FULLY PROTECTED

The LEDs require no maintenance and are integrated into a UV-stabilised, impact-resistant acrylic tube. The Bora bollards have a high IP 67 tightness level, guaranteeing the long-term cleanliness of the optical and control gear compartments. A main structure in painted extruded aluminium covers this watertight and robust optical compartment, thus assuring an unquestionable impact resistance.

EASY MAINTENANCE AND INSTALLATION

Bora products are provided with a factory-fitted supply cable. This mechanical design assures maximum tightness, which is maintained over time. Access to the optical compartment is by loosening three screws and lifting the upper part of the unit.



An installation kit is available as an option.

DESIGN AND SAFETY IN A SINGLE COLUMN

BORA
Saint-Florent-sur-Cher
France





THE URBAN LIGHT