

GL2 COMPACT



Schröder





CHARACTERISTICS – LUMINAIRE

Optical compartment tightness level:	IP 66 (*)
Control gear tightness level:	IP 66 (*)
Impact resistance (glass):	IK 08 (**)
Nominal voltage:	230V - 50Hz
Electrical class:	I (*)

Materials

Housing:	Extruded aluminium
End caps:	Die-cast aluminium
Protector:	Glass

(*) according to IEC - EN 60598

(**) according to IEC - EN 62262

KEY ADVANTAGES

- LensoFlex®2 engines providing performance, comfort and safety
- Available in symmetrical and asymmetrical configurations
- Maximised savings in energy and maintenance costs
- High tightness level and excellent heat extraction for long lasting performance
- Wide range of lumen packages
- Excellent luminance uniformity
- On-site adjustment for optimal photometry
- High level of protection against corrosion, impact and vibrations
- Surge protection 10kV (optional)

COMPACT, POWERFUL AND EFFICIENT LED SOLUTION

The GL2 Compact is an IP 66 LED luminaire providing a flexible solution to cover the lighting requirements of different areas.

The design of the LensoFlex®2 photometric engine offers maximum versatility for lighting town, motorway and railway tunnels, underpasses, sport facilities and industrial buildings. The photometry of the GL2 Compact can be either symmetrical or asymmetrical to adapt to the place to be lit.

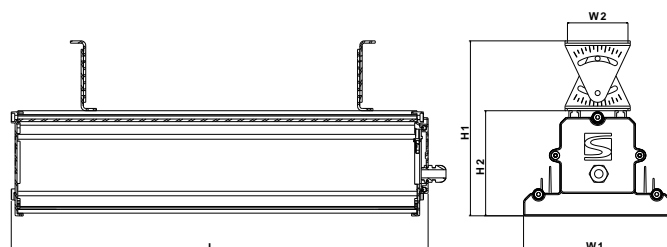
The luminaire offers several mounting possibilities. For example, it can be fixed directly onto a cable rack. The photometry can be adjusted on-site thanks to a tiltable bracket (from -60° to +60°).

The GL2 Compact guarantees long lasting performance with minimum maintenance. A door on one of the end caps provides access to the electronic compartment.

Colour: RAL 7040 light grey

DIMENSIONS

The GL2 Compact luminaire is available in five sizes to offer a wide range of lumen packages adapted to your project.



	Size 1	Size 2	Size 3	Size 4	Size 5
L	338mm	468mm	538mm	718mm	1,058mm
H1	228mm				
H2	137mm				
W1	193mm				
W2	60mm				
Kg	4kg	5.3kg	6kg	7.5kg	11.5kg

GL2 COMPACT LED LIGHTING

MAXIMUM ENERGY SAVINGS

A minimal total cost of ownership was the driving force behind the development of the GL2 Compact range. It is equipped with LEDs and various dimming and remote management options for a dramatic reduction in energy consumption.



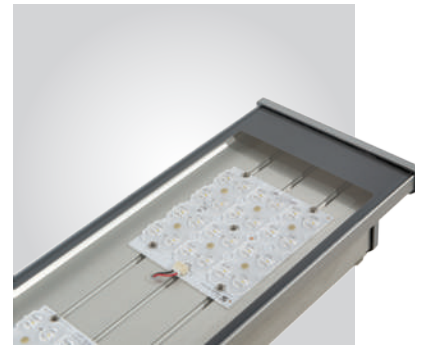
LENSOFLEX®2

GL2 Compact luminaires are equipped with second generation LensoFlex®2 photometric engines. This system is based upon the addition principle of photometric distribution. Each LED is associated with a specific lens that generates the complete photometric distribution of the luminaire. It is the number of LEDs in combination with the driving current that determines the intensity level of the light distribution.



PERFORMANCE AND FLEXIBILITY

The GL2 Compact range offers modular quantities of LEDs in 5 sizes housing to perfectly match the requirements with an optimised total cost of ownership. The right light with the right investment and the right power consumption. No less, no more. The GL2 Compact luminaires can be adjusted on-site to maximise the photometric performance. This flexibility ensures that the light distributions are specifically adapted to the real needs of the area to be lit and optimises the scheme use in order to decrease the number of fixtures.



SMART LIGHTING

The GL2 Compact luminaires can integrate a remote management system. The luminaires can be operated through a dedicated cable, a power line control, a 1-10V or a Dali protocol. The remote management system offers several key benefits such as a flexible addressing of the luminaires, a complete communication with each luminaire (including feedback on the system status), a flexible dimming programme and an energy consumption log.

These features ease the operational management of the scheme and allow a precise adaptation of the lighting to the real needs of the place and the time in order to ensure safety and well-being in the most sustainable way.



RELIABLE, DURABLE AND EFFICIENT SOLUTIONS

Designed to offer long-lasting performance, the GL2 Compact is an IP 66 sealed luminaire, protected by electrolytic oxidation (class 15). To optimise heat dissipation, the heat sink is incorporated into the body. GL2 Compact can withstand harsh conditions with ambient temperatures of -40°C up to +50°C.

The GL2 Compact luminaires offer a quick access to the power supply through a removable gear plate.

PHOTOMETRY

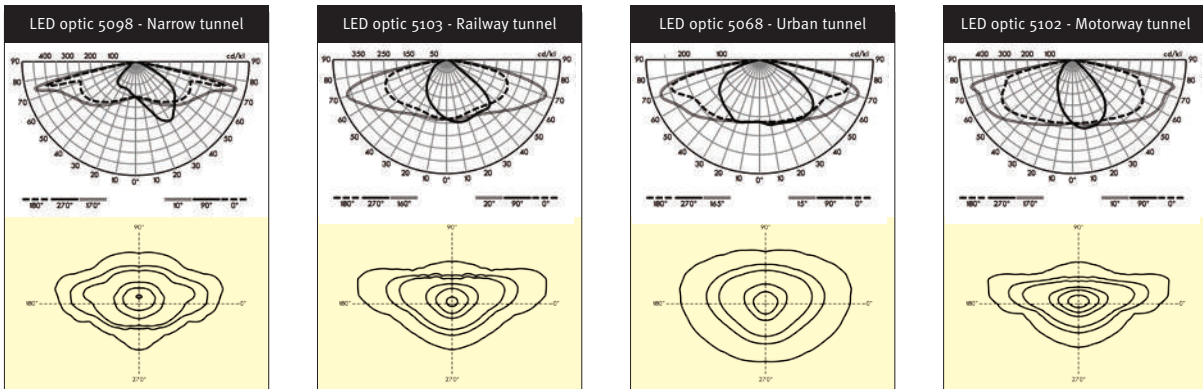
GL2 COMPACT								Lifetime residual flux @ t_q 25°C ^(*)
		Size 1	Size 2	Size 3	Size 4	Size 5		
Number of LEDs	Neutral white (4000K)	16 LEDs	32 LEDs	48 LEDs	64 LEDs	80 LEDs	96 LEDs	@100.000h
Current 350mA	Nominal flux (lm)*	2400	4800	7200	9600	12000	14400	90%
	Power consumption (W)	19	36	53	70	86	102	
Current 500mA	Nominal flux (lm)*	3100	6300	9500	12600	15800	19000	
	Power consumption (W)	26	51	75	99	122	153	
Current 700mA	Nominal flux (lm)*	4000	8100	12200	16300	20400	24400	80%
	Power consumption (W)	38	71	106	139	180	213	

^(*) The nominal flux is an indicative LED flux @ t_q 25°C based on LED manufacturer's data. The real flux output of the luminaire depends on environmental conditions (e.g. temperature and pollution) and the optical efficiency of luminaire. Nominal flux depends on the type of LED in use and likely to change in accordance with the continuous and rapid developments in LED technology.

To follow the progress of the luminous efficiency of the LEDs used, please visit our website.

^(**) In accordance with IES LM-80 - TM-21.

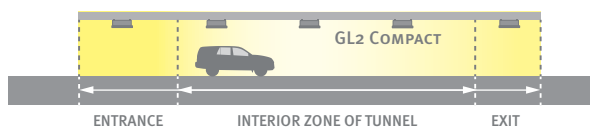
LIGHT DISTRIBUTIONS



As very flexible tools, the GL2 Compact luminaires can be fitted with a combination of LED modules in two asymmetrical distributions to obtain a symmetrical distribution.

TUNNEL APPLICATIONS

The GL2 Compact luminaire offers a perfect solution to light the entrance, interior and exit zones of road and motorway tunnels.



MOUNTING

The GL2 Compact can be fitted to all types of mounting systems. For instance, it can be suspended or fixed directly onto the cable rack. A tiltable bracket (-60° to 60°) allows a precise on-site setting to obtain the required photometry on the road as well on the tunnel walls.

This very versatile luminaire is designed to be used in all kinds of tunnels, whatever the height and the number of lanes.

