

TILTLED



AMBIANCE

ROAD & URBAN

TUNNEL

ILLUMINATION

SPORT

TRANSIT

INDUSTRY

CAMPUS



COMPACT AND TILTABLE LINEAR LED FLOODLIGHT

THE TILTLED FLOODLIGHT OFFERS A FLEXIBLE SOLUTION FOR ENHANCING ARCHITECTURE AND PROVIDING ACCENT LIGHTING.

It is characterised by the possibility of orientating the profile on-site for an optimal light distribution. The TiltLED has a multiple choice of colours (static or dynamic RGB) and can be equipped with various lenses to obtain the right beam for the desired effect.

Available in 5 sizes (500, 900, 1,300, 1,700 and 2,100mm), the TiltLED floodlight is particularly adapted to lighting public spaces or illuminating buildings, bridges, statues... It is possible to install the floodlight in a continuous line by placing several modules one after the other. The density of LEDs per metre inside the fixture can vary from 10 up to 40 in the monochromatic version. In the RGB dynamic version, this quantity is fixed to 45 LEDs per metre.

This floodlight has a remarkable finish with its painted (or anodised) extruded aluminium profile and its polycarbonate protector treated against UV rays. It integrates harmoniously into architectural structures, whether they are classic or contemporary.



CHARACTERISTICS

Lumen package (nominal flux)	1,000 to 4,000lm
Colour temperature	Neutral white (4,500K)
Lifetime (Residual flux @ t_a 25°C)	60,000hrs (L70)
Tightness level	IP 67 ^(*)
Impact resistance (polycarbonate)	IK 10 ^(**)
Electrical class	II ^(*)
Nominal voltage (external power supply)	230V - 50Hz
MATERIALS	
Housing	Aluminium
Protector	Polycarbonate

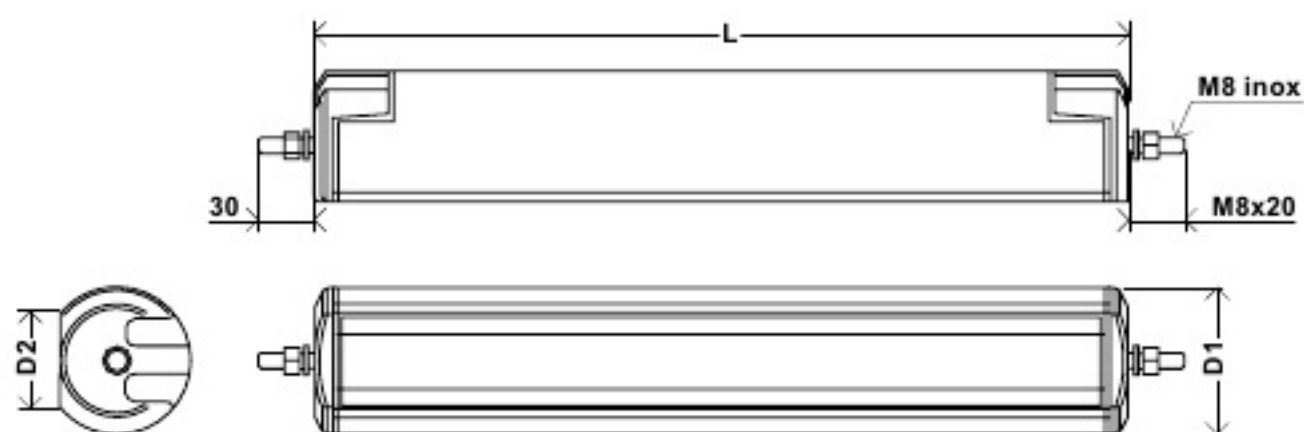
^(*) according to IEC - EN 60598 | ^(**) according to IEC - EN 62262

»» KEY ADVANTAGES

- On-site tiltable floodlight for an optimal light distribution
- Static and dynamic RGB versions
- Various photometric possibilities with narrow, medium and large beam
- High tightness level (IP 67)
- High impact resistance (IK 10)

DIMENSIONS | MOUNTING

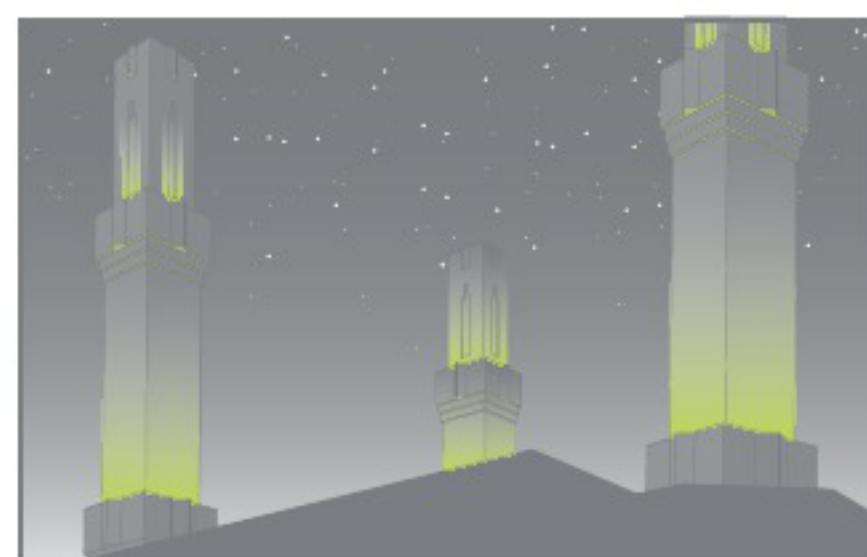
L	502/894/1,286/1,676/2,076mm
D1	80mm
D2	52mm



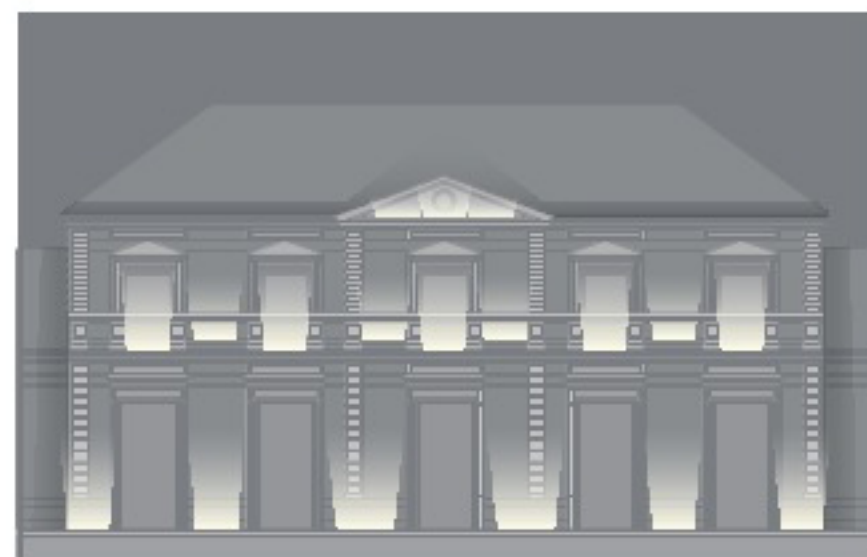
FIXING ANGLE



MAIN APPLICATIONS



ACCENT LIGHTING



FAÇADE LIGHTING



HANDRAILS



More information on
www.schreder.com



FUNCTIONAL

DECORATIVE

ARCHITECTURAL

OTHER APPLICATIONS