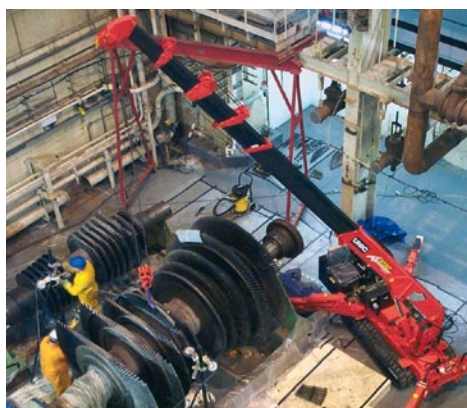
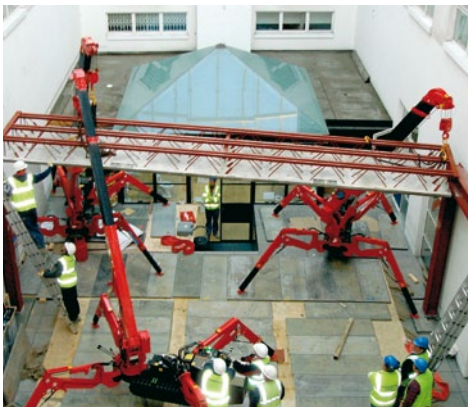


THE WORLD'S
MOST
COMPACT
MINI CRANES




UNIC
CRANES EUROPE

URW-094 URW-095 URW-245 URW-295 URW-376 URW-506 URW-547 URW-706




UNIC mini spider cranes are the world's most compact cranes.


The combination of pioneering design, precision manufacturing, and innovative technology gives these cranes incredible capacity and reach for such compact machines. UNIC mini cranes have the flexibility and capabilities to assist in a huge variety of lifting situations from internal and confined lifting through to glass installation, steel erection, machinery removal, railway maintenance and more. **Wherever access is restricted or working space is confined, UNIC mini spider cranes are the only solution.**




Crane capacity	0.995t x 1.5m
Max lifting height	5.6m
Max working radius	5.17m
Weight	1000kg




Crane capacity	0.995t x 3.5m
Max lifting height	8.8m
Max working radius	8.41m
Weight	1850kg



Crane capacity	2.4t x 1.5m
Max lifting height	6.3m
Max working radius	5.85m
Weight	1500kg




Crane capacity	2.9t x 1.4m
Max lifting height	8.8m
Max working radius	8.41m
Weight	1850kg




Crane capacity	2.9t x 2.5m
Max lifting height	14.9m
Max working radius	14.45m
Weight	3850kg



Crane capacity	3.0t x 3.4m
Max lifting height	16m
Max working radius	15.52m
Weight	4840kg



Crane capacity	4.0t x 2.5m
Max lifting height	18.2m
Max working radius	17.83m
Weight	5010kg



Crane capacity	6.0t x 3.0m
Max lifting height	19.5m
Max working radius	18.6m
Weight	7920kg

Common applications include: Glass Lifting • Glass Installation • Confined Access • In-Between Floors • Below Ground • Roof-Top Operation • Monument Lifting • Landscaping • Marine Lifting • Machinery Removals & Installation • Offshore • Petrochemical Plant Maintenance • Tunnel Operations • Shopping Mall & Retail Park Installations • Film & Entertainment • Restoration Projects • Waterways Maintenance • Railway Maintenance • Aviation • Steel Erection • Cladding Lifting & Installation

URW-094 (0.995t x 1.5m)

- Total width 0.595m
- Max working radius 5.17m
- Petrol powered, optional LPG dual fuel
- Multi-position configurable outriggers
- Intelligent voice warning system
- Radio remote control as standard
- Intelligent throttle activation for economy and ecology

Capacity 0.995t x 1.5m

Max Boom Length 5.49m

Max Lifting Height 5.6m

Weight 1000kg



The URW-094 is the world's smallest and lightest mini crane. At only 595mm wide and weighing 1000kg it is ideal for manoeuvring into the most confined working areas and is narrow enough to allow access through a standard doorframe. Once in position, the URW-094 is capable of lifting heavy loads of almost 1 tonne with its 5.49m long boom allowing a maximum hook height of 5.6m.

ADDITIONAL FEATURES



Radio remote control



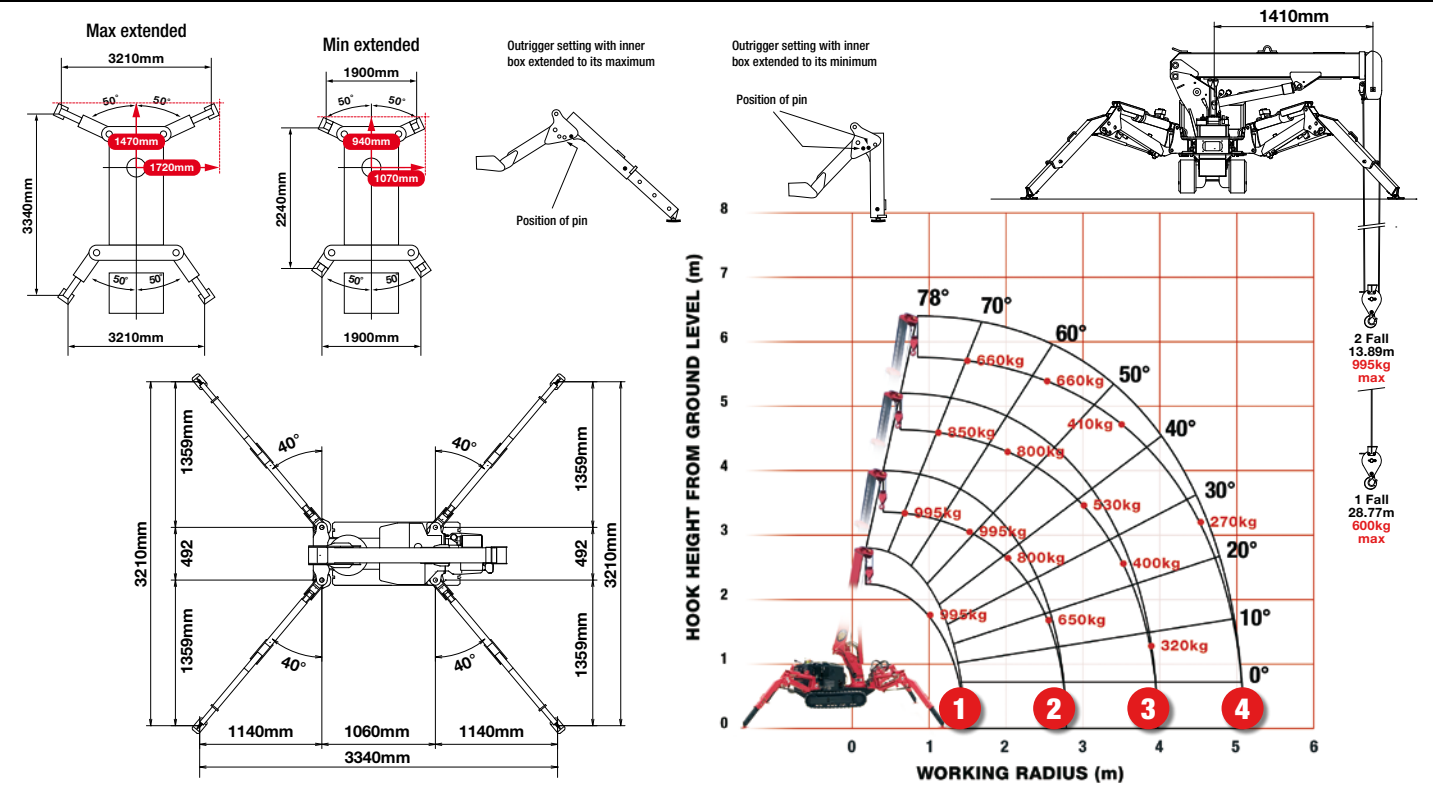
Optional full safe load indicator

CRANE SPECIFICATIONS

Crane capacity	capacity:	0.995t x 1.5m
Max working radius	max:	5.17m
Max lifting height	approx:	5.6m
Rope length	max:	13.89m (2 fall), 28.77m (1 fall)
Dimensions	folded:	1870mm (l) x 595mm (w) x 1290mm (h)
Weight	unladen:	1000kg
Point loadings	Due to the many variables involved, point loadings are only available on request	
Hook speed	approx:	8.5m/min (with 3 layers and 2 falls)
Telescopic system	boom length:	1.73 - 5.49m
	telescoping speed:	3.76m/17 seconds
	boom type:	4 section hydraulically telescoping boom, 4 sided box beam
Derricking angle/speed	approx:	0 - 78° / 6.5 seconds
Slewing angle/speed	approx:	360° (continuous) 1.5min rpm
Traction system	drive:	hydrostatic, stepless forward and reverse
	travel speed:	0 - 2.2km/h
	gradability:	20°
	track ground length:	900mm
	track ground pressure:	36.3kPa (0.37kg/cm²)
Engine	track width:	150mm
	manufacturer:	Mitsubishi
	fuel:	petrol (LPG dual option)
	maximum output:	5.5kW (7.5PS) / 1800min rpm
	starting method:	electric and recoil start as standard
Standard equipment	tank capacity:	6 litres
	radio remote control, overwinding alarm, computer controlled intelligent voice warning system, multi-function operation by radio remote control, intelligent throttle activation, automatic hook stow	
Optional equipment	1 fall hook block, LPG dual power, low marking tracks, optional safe load indicator (note: with this SLI option the outriggers must be pinned in their standard position - 50°)	

MINI SPIDER CRANE

RATED LOADS & OUTRIGGER POSITIONS

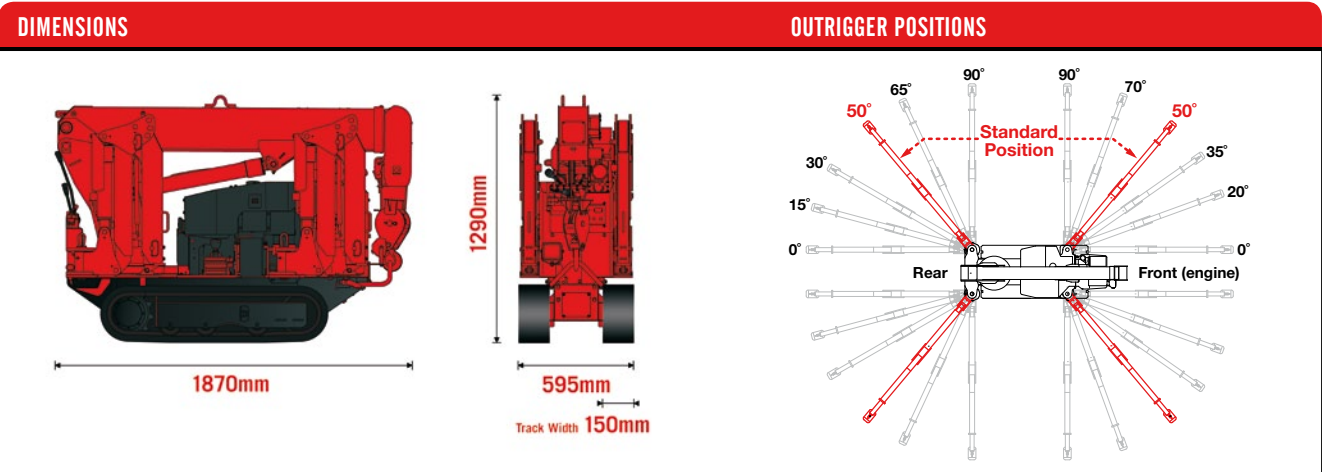


FIRST STAGE EXTENDED 1.73M BOOM LENGTH									
Working radius	m	up to 1.0	1.1	1.2	1.3	1.41			
Outrigger	Max-extended	kg	995	995	995	995	995	995	995
	Min-extended	kg	800	800	750	700	650		

SECOND STAGE EXTENDED 1.73 - 3.01M BOOM LENGTH									
Working radius	m	up to 1.0	1.1	1.3	1.5	2.0	2.5	2.69	
Outrigger	Max-extended	kg	995	995	995	995	800	650	580
	Min-extended	kg	800	800	700	600	410	285	230

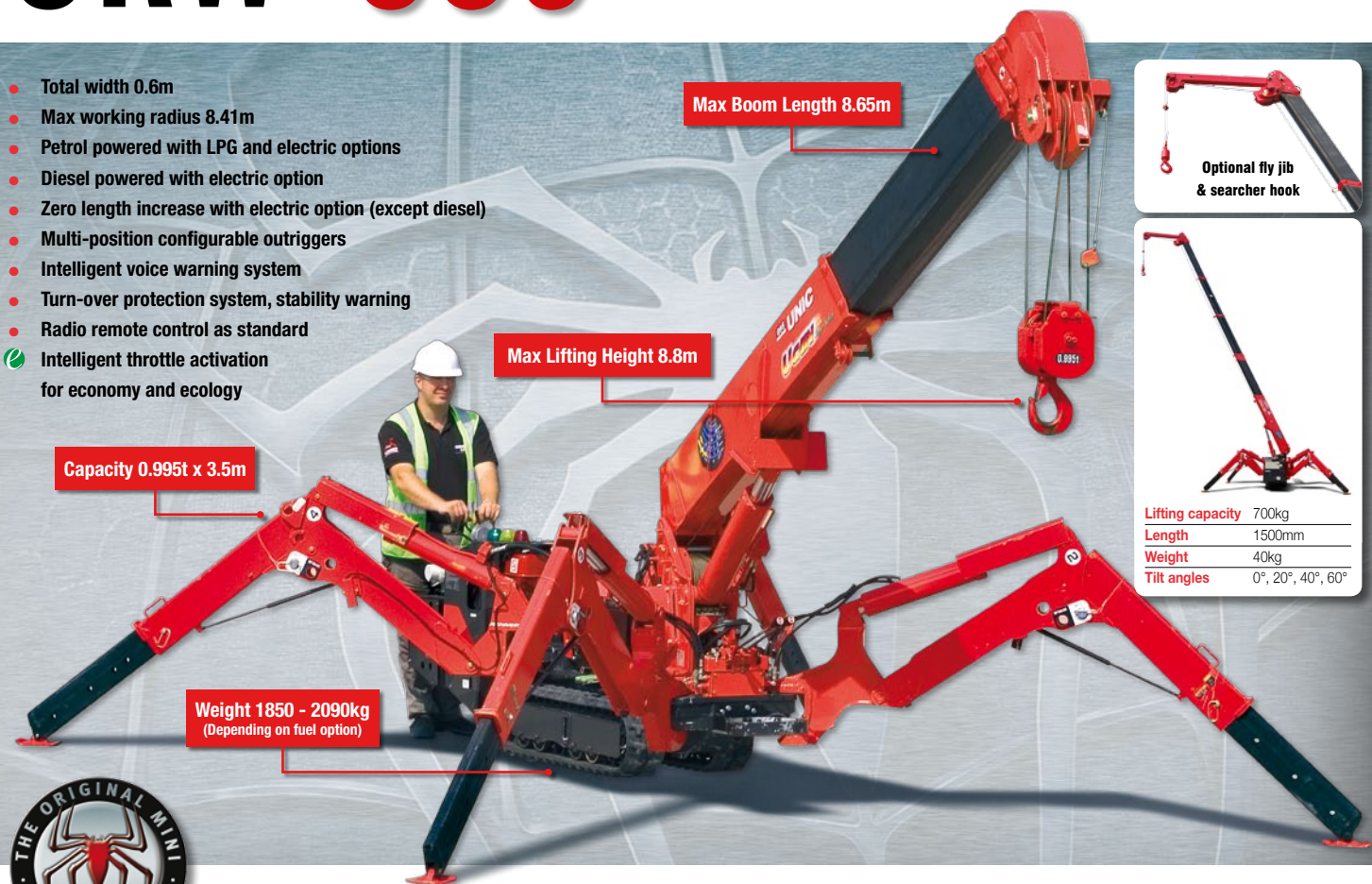
THIRD STAGE EXTENDED 3.01 - 4.25M BOOM LENGTH									
Working radius	m	up to 1.0	1.8	2.0	2.5	2.8	3.0	3.5	3.93
Outrigger	Max-extended	kg	850	850	800	650	580	530	400
	Min-extended	kg	500	500	410	285	215	190	145

FOURTH STAGE EXTENDED 4.25 - 5.49M BOOM LENGTH									
Working radius	m	up to 2.4	2.5	2.8	3.0	3.5	4.0	4.5	5.1
Outrigger	Max-extended	kg	660	660	580	530	410	330	270
	Min-extended	kg	360	320	220	190	145	105	80



URW-095 (0.995t x 3.5m)

- Total width 0.6m
- Max working radius 8.41m
- Petrol powered with LPG and electric options
- Diesel powered with electric option
- Zero length increase with electric option (except diesel)
- Multi-position configurable outriggers
- Intelligent voice warning system
- Turn-over protection system, stability warning
- Radio remote control as standard
- Intelligent throttle activation for economy and ecology



Lifting capacity	700kg
Length	1500mm
Weight	40kg
Tilt angles	0°, 20°, 40°, 60°



The URW-095 is just 0.6m wide and designed specifically for interior access and benefits from class-leading heavy lifting capacity. The URW-095 boasts unrivalled boom length and its outriggers allow for independent multi-angle configurations to suit the working space especially in restricted or confined areas - the patented UNIC stability protection system provides the benefit of turnover protection for enhanced safety.



ADDITIONAL FEATURES

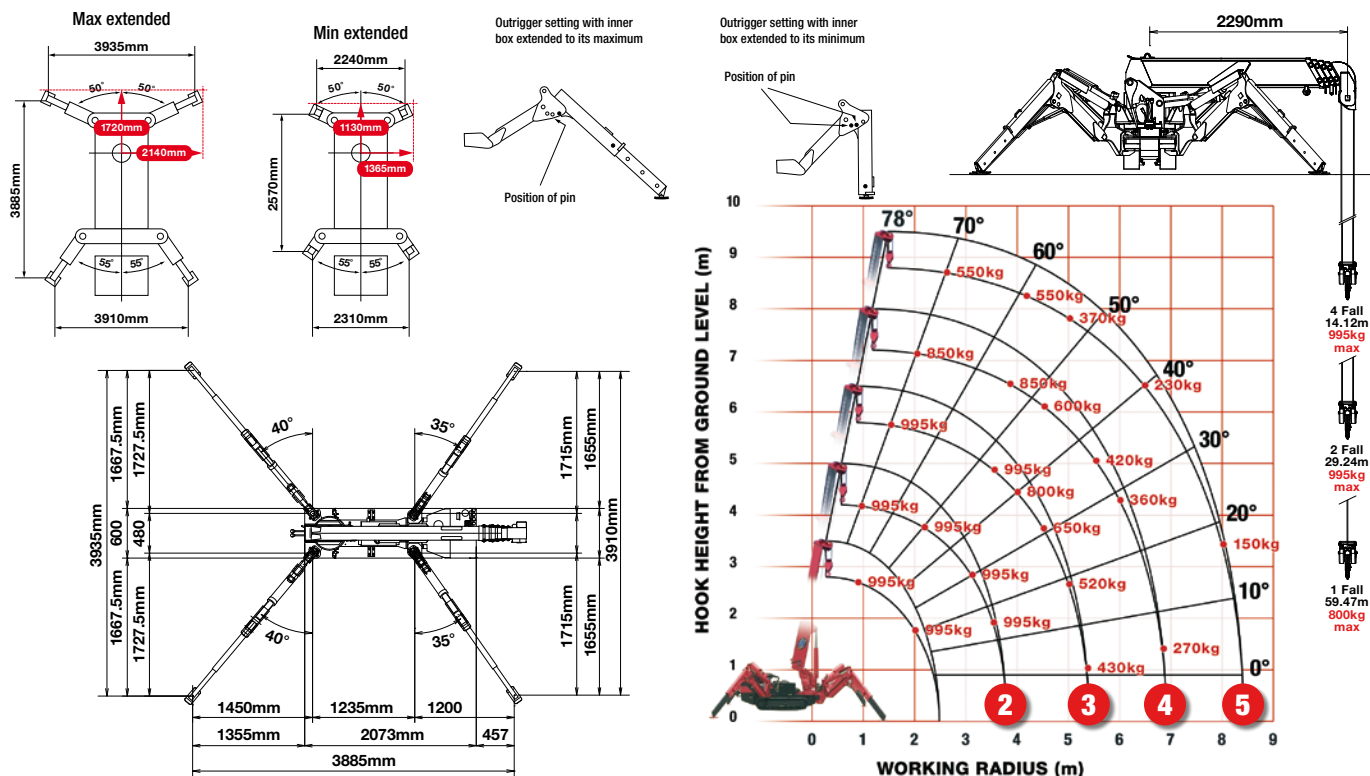


CRANE SPECIFICATIONS

Crane capacity	capacity:	0.995t x 3.5m
Max working radius	max:	8.41m
Max lifting height	approx:	8.8m (9.8m with fly jib, 10.47m with fixed hook)
Rope length	max:	14.12m (4 fall), 29.24m (2 fall), 59.47m (1 fall)
Dimensions	folded:	2690mm (2905mm diesel & electrical dual) (l) x 600mm (w) x 1375mm (h)
Weight	unladen:	1850kg (1950kg with electric option, 1920kg with diesel option, 2090kg with diesel and electric dual option)
Point loadings	Due to the many variables involved, point loadings are only available on request	
Hook speed	approx:	10m/min (with 4 layers and 4 falls)
Telescopic system	boom length:	2.53 - 8.65m
	telescoping speed:	6.12m/20 seconds
	boom type:	5 section hydraulically telescoping boom, hexagonal box construction
Derricking angle/speed	approx:	0 - 78°/11 seconds
Slewing angle/speed	approx:	360° (continuous) 1.5min rpm
Traction system	drive:	hydrostatic, stepless forward and reverse
	travel speed:	0 - 2.3km/h
	gradability:	20°
	track ground length:	1050mm
	track ground pressure:	48kPa (0.49kg/cm²)
Engine	track width:	180mm
	manufacturer:	Mitsubishi (Kubota diesel)
	fuel:	petrol with LPG and electric options, diesel with electric option
	maximum output:	9.6kW (13PS) / 2000min rpm
	starting method:	electric and recoil start as standard
Electric motor	tank capacity:	6 litres petrol, 9 litres diesel
	power:	3.7kW
Standard equipment	voltage:	400v AC 50/60Hz
	radio remote control, overwinding alarm, computer controlled intelligent voice warning system, multi-function operation by radio remote control, intelligent throttle activation, automatic hook stow, load indication, turn-over protection system with stability warning lamps and alarm	
Optional equipment	1 fall hook block, 2 fall hook block, LPG dual power, mains electric dual power (400v), diesel engine, low marking tracks, searcher hook small 300kg, searcher hook 700kg, fly jib 700kg with single part line	

MINI SPIDER CRANE

RATED LOADS & OUTRIGGER POSITIONS



SECOND STAGE EXTENDED 2.53 - 4.075M BOOM LENGTH

Working radius	m	up to 1.0	1.4	1.5	1.8	2.0	2.5	3.0	3.5	3.835
Outrigger	Max-extended	kg	995	995	995	995	995	995	995	900
	Min-extended	kg	995	995	995	995	995	650	490	250

THIRD STAGE EXTENDED 4.075 - 5.61M BOOM LENGTH

Working radius	m	up to 2.2	2.5	2.9	3.0	3.5	4.0	4.5	5.0	5.37
Outrigger	Max-extended	kg	995	995	995	995	995	800	650	520
	Min-extended	kg	800	650	530	500	380	280	220	160

FOURTH STAGE EXTENDED 5.61 - 7.13M BOOM LENGTH

Working radius	m	up to 3.3	3.8	4.0	4.5	5.0	5.5	6.0	6.5	6.89
Outrigger	Max-extended	kg	850	850	750	600	500	420	360	320
	Min-extended	kg	420	340	300	250	190	140	100	80

FIFTH STAGE EXTENDED 7.13 - 8.65M BOOM LENGTH

Working radius	m	up to 3.8	4.1	4.5	5.0	5.5	6.0	6.5	7.0	8.0	8.41
Outrigger	Max-extended	kg	550	550	450	370	310	270	230	200	150
	Min-extended	kg	350	290	250	200	160	130	100	70	40

SEARCHER HOOK SMALL - 300kg

Stowed position



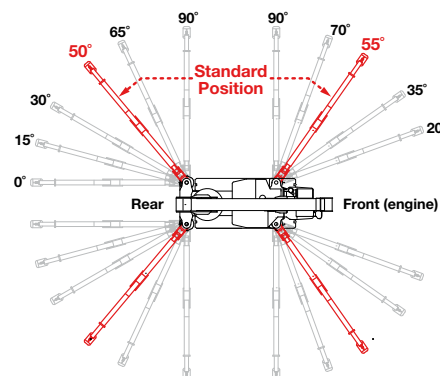
In operation



Lifting capacity	300kg
Length	500mm
Weight	15kg
Tilt angles	0°, 20°, 40°, 60°

DIMENSIONS

OUTRIGGER POSITIONS



URW-245 (2.4t x 1.5m)

- Total width 0.6m
- Max working radius 5.85m
- Petrol powered, optional LPG dual fuel
- Operator control of outrigger extension
- Radio remote control as standard
- Working area limitation
- Slew limitation (optional)
- Intelligent throttle activation for economy and ecology



The newest addition to the UNIC range offers unrivalled lifting power with its class-beating minimal dimensions and weight. The URW-245 is the ideal machine for in-between floor operations and fits easily into goods lifts without the need for disassembly.

ADDITIONAL FEATURES



Radio remote control



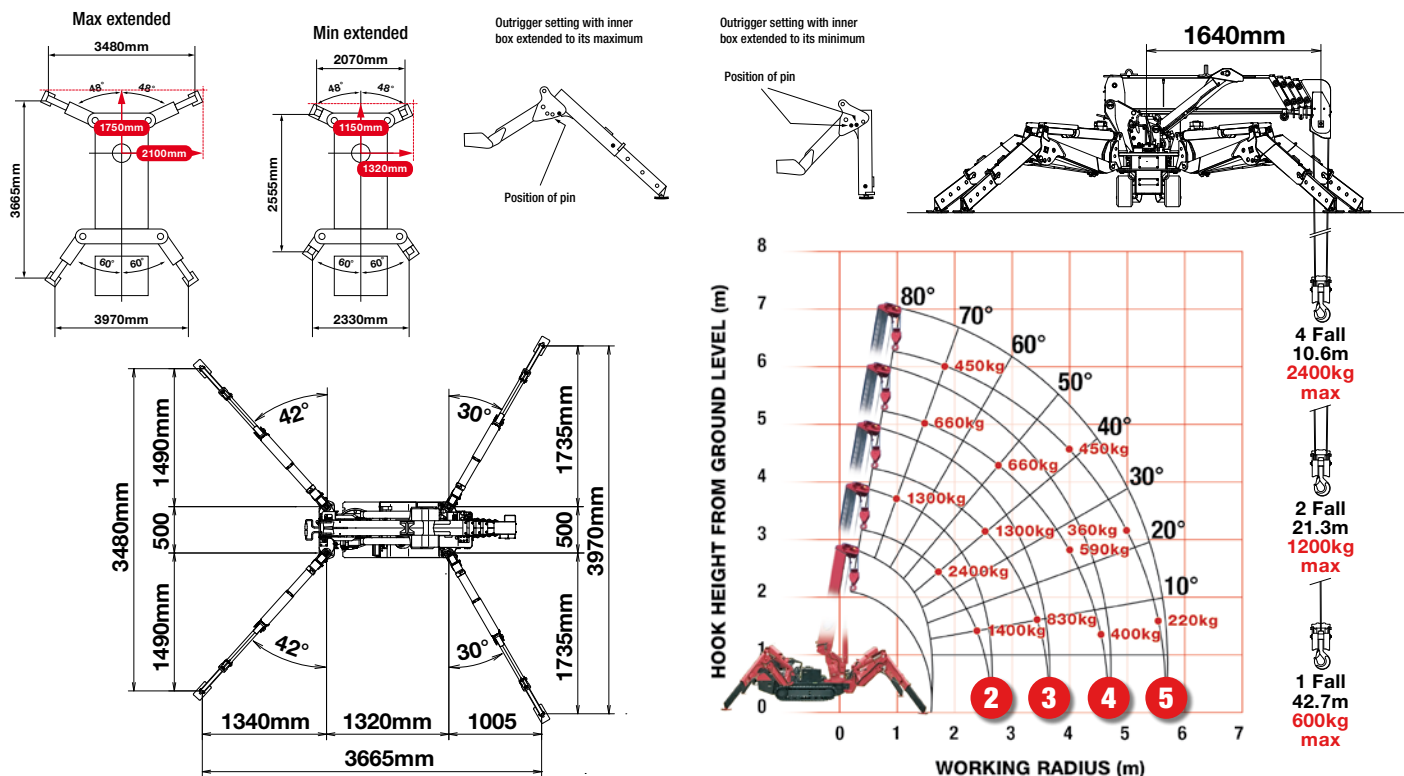
Full safe load indicator

CRANE SPECIFICATIONS

Crane capacity	capacity:	2.4t x 1.5m
Max working radius	max:	5.85m
Max lifting height	approx:	6.3m
Rope length	max:	10.6m (4 fall), 21.3m (2 fall), 42.7m (1 fall)
Dimensions	folded:	2150mm (l) x 600mm (630mm with 180mm tracks) (w) x 1320mm (h)
Weight	unladen:	1500kg
Point loadings	Due to the many variables involved, point loadings are only available on request	
Hook speed	approx:	13m/min (with 3 layers and 4 falls)
Telescopic system	boom length:	1.98 - 6.19m
	telescoping speed:	4.21m/14 seconds
	boom type:	5 section hydraulically telescoping boom, hexagonal box construction
Derricking angle/speed	approx:	0 - 80°/10 seconds
Slewing angle/speed	approx:	360° (continuous) 2.0min rpm
Traction system	drive:	hydrostatic, step-less forward and reverse
	travel speed:	0 - 2.1km/h (low), 0 - 3.8km/h (high)
	gradability:	20°
	track ground length:	1050mm
	track ground pressure:	47kPa (0.48kg/cm²) (with 150mm tracks) 39kPa (0.40kg/cm²) (with optional 180mm tracks)
Engine	track width:	150mm, 180mm
	manufacturer:	Mitsubishi
	fuel:	petrol (LPG dual option)
	maximum output:	6.6kW (9PS) / 1800min rpm
	starting method:	electric and recoil start as standard
Standard equipment	tank capacity:	6 litres
	computer controlled moment limiter (safe load indicator), radio remote control, overwinding alarm, computer controlled intelligent voice warning system, multi-function operation by radio remote control, intelligent throttle activation, automatic hook slow, overload warning alarms, overload warning lamps	
Optional equipment	1 fall hook block, 2 fall hook block, LPG dual power, low marking tracks, 180mm tracks, searcher hook	

MINI SPIDER CRANE

RATED LOADS & OUTRIGGER POSITIONS



SECOND STAGE EXTENDED 1.98 - 3.05M BOOM LENGTH

Working radius	m	up to 1.3	1.5	1.8	2.0	2.5	2.71
Outrigger	kg	2,400	2,400	1,960	1,760	1,400	1,350
	kg	1,150	1,150	700	550	330	310

THIRD STAGE EXTENDED 3.05 - 4.11M BOOM LENGTH

Working radius	m	up to 1.50	2.00	2.60	3.00	3.50	3.77
Outrigger	kg	1,300	1,300	1,300	1,060	830	710
	kg	350	350	350	230	170	150

FOURTH STAGE EXTENDED 4.11 - 5.15M BOOM LENGTH

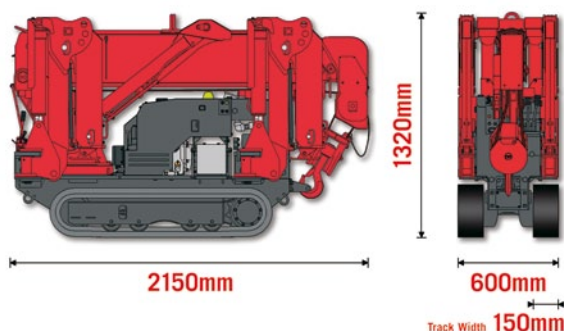
Working radius	m	up to 2.50	3.00	3.70	4.00	4.50	4.81
Outrigger	kg	660	660	660	590	420	400
	kg	170	170	170	150	100	80

FIFTH STAGE EXTENDED 5.15 - 6.19M BOOM LENGTH

Working radius	m	up to 3.50	4.00	4.50	5.00	5.50	5.85
Outrigger	kg	450	450	400	360	250	220
	kg	150	150	100	80	60	50



DIMENSIONS



URW-295 (2.9t x 1.4m)

- Total width 0.6m
- Max working radius 8.41m
- Petrol powered with LPG and electric options
- Diesel powered with electric option
- Zero length increase with electric option (except diesel)
- Operator control of outrigger extension
- Radio remote control as standard
- Working area limitation
- Slew limitation (optional)
- Intelligent throttle activation for economy and ecology

Max Boom Length 8.65m

Max Lifting Height 8.8m

Capacity 2.9t x 1.4m

Weight 1850 - 2090kg
(Depending on fuel option)

Optional fly jib
& searcher hook

Capacity 700kgs
Length 1500mm
Weight 40kg
Tilt angles 0°, 20°, 40°, 60°



The URW-295 is the first mini crane available in Europe narrow enough to allow access through a standard doorframe, but with almost 3 tonnes of lifting power. It also leads the way technically with an array of innovative safety features including a computer-controlled, intelligent voice warning system and the unique UNIC pressure compensation proportional valve, which allows multi-function radio remote control operation.



ADDITIONAL FEATURES



Radio remote control



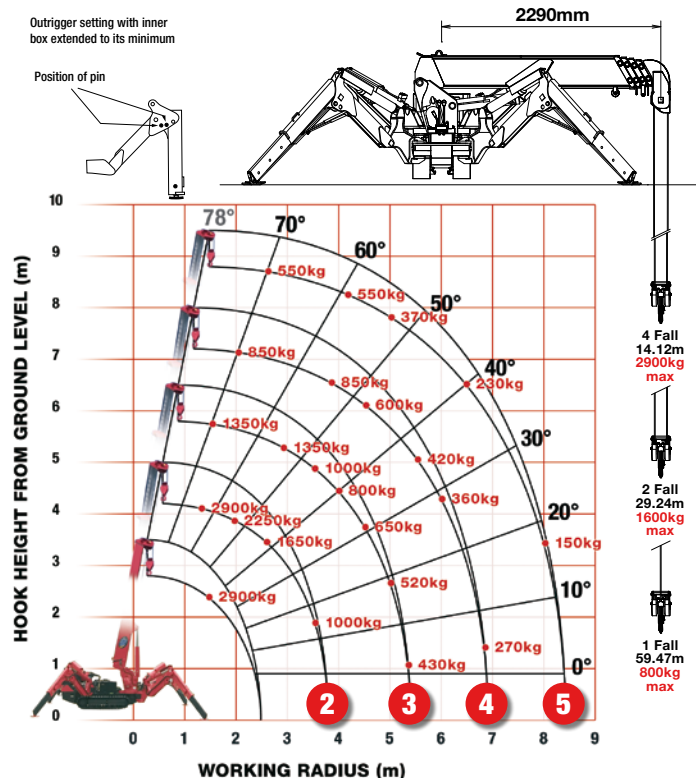
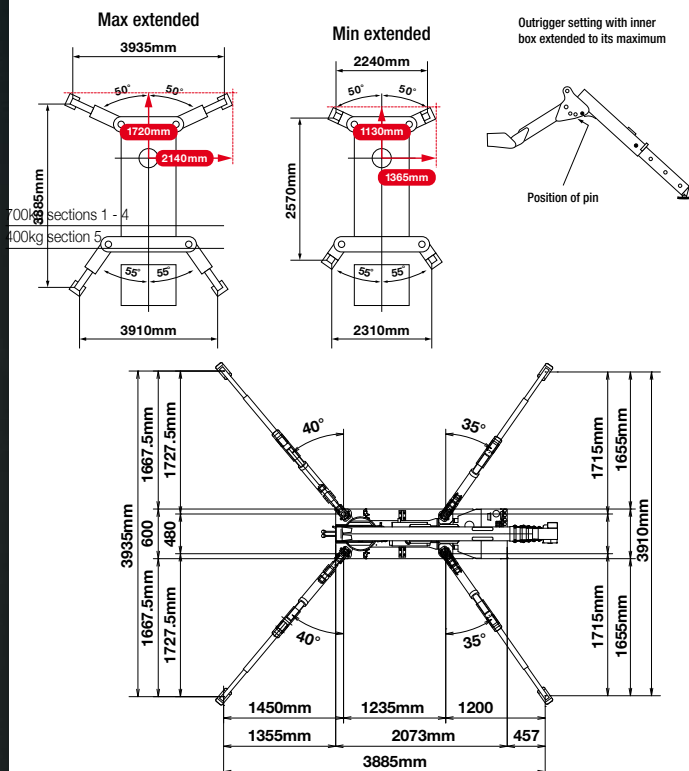
Full safe load indicator

CRANE SPECIFICATIONS

Crane capacity	capacity:	2.9t x 1.4m
Max working radius	max:	8.41m
Max lifting height	approx:	8.8m (9.8m with fly jib, 10.47m with fixed hook)
Rope length	max:	14.12m (4 fall), 29.24m (2 fall), 59.47m (1 fall)
Dimensions	folded:	2690mm (2905mm diesel & electrical dual) (l) x 600mm (w) x 1375mm (h)
Weight	unladen:	1850kg (1950kg with electric option, 1920kg with diesel option, 2090kg with diesel and electric dual option)
Point loadings	Due to the many variables involved, point loadings are only available on request	
Hook speed	approx:	10m/min (with 4 layers and 4 falls)
Telescopic system	boom length:	2.53 - 8.65m
	telescoping speed:	6.12m/20 seconds
	boom type:	5 section hydraulically telescoping boom, hexagonal box construction
Derricking angle/speed	approx:	0 - 78°/11 seconds
Slewing angle/speed	approx:	360° (continuous) 1.5min rpm
Traction system	drive:	hydrostatic, stepless forward and reverse
	travel speed:	0 - 2.3km/h
	gradability:	20°
	track ground length:	1050mm
	track ground pressure:	48kPa (0.49kg/cm²)
Engine	track width:	180mm
	manufacturer:	Mitsubishi (Kubota diesel)
	fuel:	petrol with LPG and electric options, diesel with electric option
	maximum output:	9.6kW (13PS) / 2000min rpm
	starting method:	electric and recoil start as standard
Electric motor	tank capacity:	6 litres petrol, 9 litres diesel
	power:	3.7kW
	voltage:	400v AC 50/60Hz
Battery crane option	weight:	2100kg
	voltage:	48v 3.7kW (AC induction motor with controller and on-board charger)
Standard equipment	computer controlled moment limiter (safe load indicator), radio remote control, overwinding alarm, computer controlled intelligent voice warning system, multi-function operation by radio remote control, intelligent throttle activation, automatic hook stow, overload warning alarms, overload warning lamps, working area limitation	
Optional equipment	1 fall hook block, 2 fall hook block, LPG dual power, mains electric dual power (400v), diesel engine, low marking tracks, slew limitation, searcher hook small 300kg, searcher hook 700kg, fly jib 700kg with single part line, radio remote control with feedback display (with i3000 SLI) and data logging	

MINI SPIDER CRANE

RATED LOADS & OUTRIGGER POSITIONS



SECOND STAGE EXTENDED 2.53 - 4.075M BOOM LENGTH

Working radius	m	up to 1.0	1.4	1.5	1.8	2.0	2.5	3.0	3.5	3.835
Outrigger										
Max-extended	kg	2,900	2,900	2,650	2,250	2,050	1,650	1,300	1,000	900
Min-extended	kg	2,000	2,000	2,000	1,450	1,100	650	490	350	250

THIRD STAGE EXTENDED 4.075 - 5.61M BOOM LENGTH

Working radius	m	up to 2.2	2.5	2.9	3.0	3.5	4.0	4.5	5.0	5.37
Outrigger										
Max-extended	kg	1,350	1,350	1,350	1,250	1,000	800	650	520	430
Min-extended	kg	800	650	530	500	380	280	220	160	120

FOURTH STAGE EXTENDED 5.61 - 7.13M BOOM LENGTH

Working radius	m	up to 3.3	3.8	4.0	4.5	5.0	5.5	6.0	6.5	6.89
Outrigger										
Max-extended	kg	850	850	750	600	500	420	360	320	270
Min-extended	kg	420	340	300	250	190	140	100	80	60

FIFTH STAGE EXTENDED 7.13 - 8.65M BOOM LENGTH

Working radius	m	up to 3.8	4.1	4.5	5.0	5.5	6.0	6.5	7.0	8.0	8.41
Outrigger											
Max-extended	kg	550	550	450	370	310	270	230	200	150	130
Min-extended	kg	350	290	250	200	160	130	100	70	40	30

SEARCHER HOOK SMALL - 300kg

Stowed position



In operation

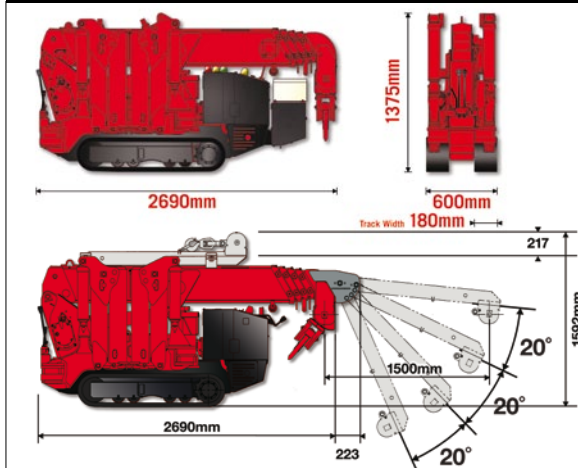


Lifting capacity	300kg
Length	500mm
Weight	15kg
Tilt angles	0°, 20°, 40°, 60°

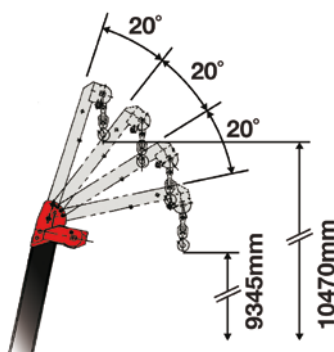
DIMENSIONS

SEARCHER HOOK

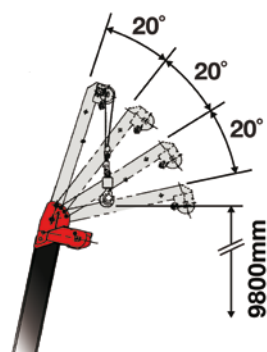
FLY JIB



Length 1500mm (radius rated)
Maximum Load 500kg - 700kg



Maximum Load 400kg - 700kg
(angle rated)



URW-376 (2.9t x 2.5m)

- Total width 1.3m
- Max working radius 14.45m
- Diesel powered and optional mains electric
- Zero length increase with electric option
- Operator control of outrigger extension
- Intelligent voice warning system
- Radio remote control as standard
- Working area limitation
- Slew limitation (optional)
- Intelligent throttle activation for economy and ecology



Safe load indicator

Max Boom Length 14.61m

Max Lifting Height 14.9m

Capacity 2.9t x 2.5m

Weight 3850 - 4000kg

Optional fly jib & searcher hook

Lifting capacity 700kg
Length 2017mm
Weight 50kg
Tilt angles 0°, 20°, 40°, 60°



The URW-376 UNIC mini crane features a six-section hydraulic boom to allow a maximum working radius of 14.45m. This mid-capacity spider crane can be controlled either from the onboard operators seat or from a distance using a radio remote control, or optional radio remote control with digital feedback.

REMOTES



Standard radio remote control



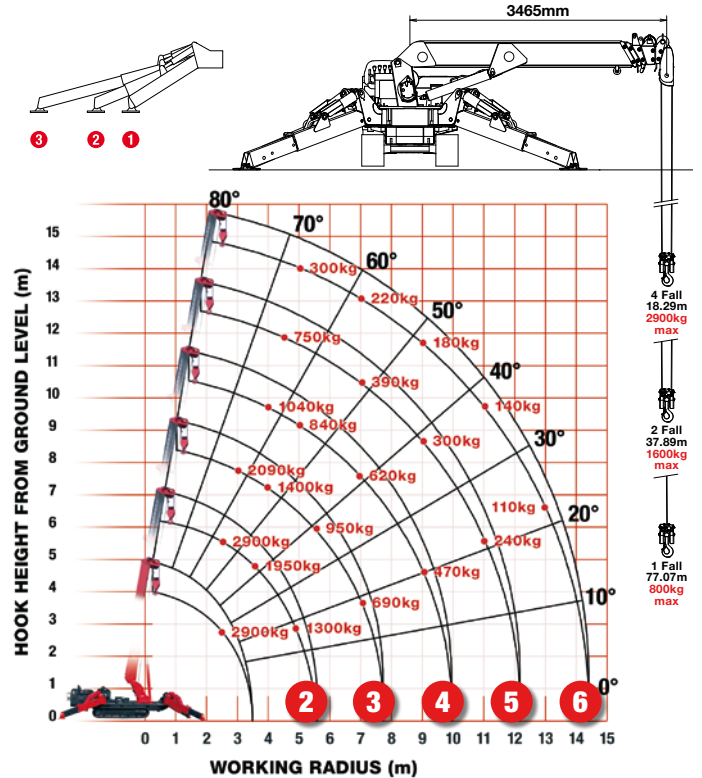
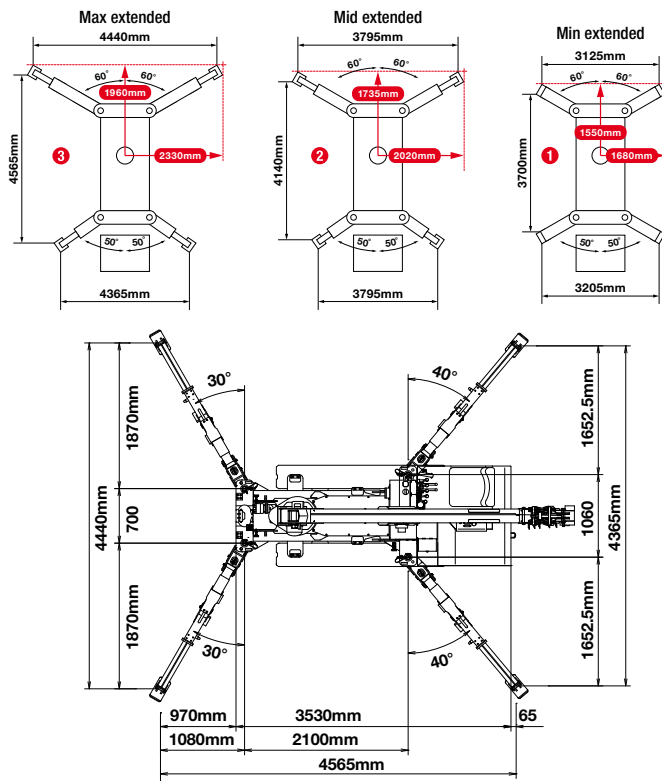
Optional radio remote control with digital feedback

CRANE SPECIFICATIONS

Crane capacity	capacity:	2.9t x 2.5m
Max working radius	max:	14.45m
Max lifting height	approx:	14.9m (16.63m with fly jib, 17.33m with fixed hook)
Rope length	max:	18.29m (4 fall), 37.89m (2 fall), 77.07m (1 fall)
Dimensions	folded:	4340mm (l) x 1300mm (w) x 1800mm (h)
Weight	unladen:	3850kg (4000kg with electric option)
Point loadings	Due to the many variables involved, point loadings are only available on request	
Hook speed	approx:	17m/min (with 4 layers and 4 falls)
Telescopic system	boom length:	3.63 - 14.61m
	telescoping speed:	10.98m/23 seconds
	boom type:	6 section hydraulically telescoping boom, hexagonal box construction
Derricking angle/speed	approx:	0 - 80°/10 seconds
Slewing angle/speed	approx:	360° (continuous) 2.5min rpm
Traction system	drive:	hydrostatic 2-speed, stepless forward and reverse
	travel speed:	0-3km/h
	gradability:	23°
	track ground length:	1750mm
	track ground pressure:	36kPa (0.37kg/cm²)
	track width:	300mm
Engine	manufacturer:	Mitsubishi / Yanmar
	fuel:	diesel (electric dual power option)
	maximum output:	18kW (24.5PS) / 2100min rpm
	starting method:	electric
	tank capacity:	40 litres
Electric motor	power:	7.5kW
	voltage:	400v AC 50/60Hz
Standard equipment	computer controlled moment limiter (safe load indicator), radio remote control, overwinding alarm, computer controlled intelligent voice warning system, multi-function operation by radio remote control, intelligent throttle activation, automatic hook stow, overload warning alarms, overload warning lamps, working area limitation	
Optional equipment	1 fall hook block, 2 fall hook block, mains electric dual power (400v), low marking tracks, slew limitation, searcher hook small 500kg, searcher hook 700kg, fly jib 700kg with single part line, radio remote control with feedback display, data logging	

MINI SPIDER CRANE

RATED LOADS & OUTRIGGER POSITIONS



SECOND STAGE EXTENDED 3.63 - 5.85 BOOM LENGTH

Working radius	m	up to 2.0	2.5	3.0	3.5	4.0	4.5	5.0	5.69
Outrigger									
Max-extended	kg	2,900	2,900	2,350	1,950	1,670	1,450	1,300	1,070
Mid-extended	kg	2,900	2,900	2,320	1,920	1,570	1,250	990	770
Min-extended	kg	2,900	2,900	2,170	1,500	1,120	900	720	470

THIRD STAGE EXTENDED 5.85 - 8.04M BOOM LENGTH

Working radius	m	up to 2.7	3.0	3.5	4.0	4.5	5.0	5.5	6.0	7.0	7.88
Outrigger											
Max-extended	kg	2,240	2,090	1,650	1,400	1,220	1,070	950	840	690	590
Mid-extended	kg	2,240	2,060	1,650	1,390	1,170	1,000	820	640	450	370
Min-extended	kg	2,240	2,060	1,570	1,220	1,020	830	650	510	300	190

FOURTH STAGE EXTENDED 8.04 - 10.23M BOOM LENGTH

Working radius	m	up to 4.0	4.5	5.0	6.0	7.0	8.0	9.0	10.07
Outrigger									
Max-extended	kg	1,040	930	840	730	620	520	470	380
Mid-extended	kg	1,030	920	830	670	500	380	280	200
Min-extended	kg	1,030	820	640	470	310	220	130	90

FIFTH STAGE EXTENDED 10.23 - 12.42M BOOM LENGTH

Working radius	m	up to 4.5	5.0	6.0	7.0	8.0	9.0	10.0	11.0	12.26
Outrigger										
Max-extended	kg	750	620	480	390	340	300	270	240	230
Mid-extended	kg	750	620	470	390	320	270	220	170	130
Min-extended	kg	750	620	400	250	180	130	90	60	10

SIXTH STAGE EXTENDED 12.42 - 14.61M BOOM LENGTH

Working radius	m	up to 4.9	5.5	6.0	7.0	8.0	9.0	10.0	11.0	12.0	13.0	14.45
Outrigger												
Max-extended	kg	300	270	250	220	200	180	160	140	130	110	100
Mid-extended	kg	300	270	250	220	200	180	160	120	90	60	40
Min-extended	kg	300	270	250	220	170	110	80	50	30	20	10

SEARCHER HOOK SMALL - 500kg



Stowed position

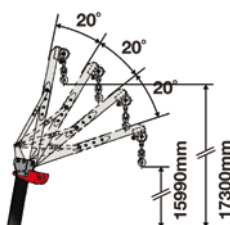


In operation

Lifting capacity	500kg sections 1-5
	280kg section 6
Length	800mm
Weight	20kg
Tilt angles	0°, 20°, 40°, 60°

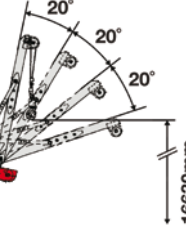
SEARCHER HOOK

Length 2017mm (radius rated)
Maximum Load 150kg - 700kg

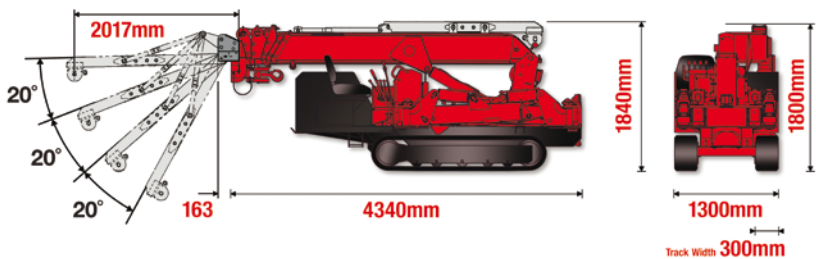


FLY JIB

Maximum Load 150kg - 700kg
(angle rated)



DIMENSIONS



URW-506 (3.0t x 3.4m)

URW-506-1 (4.0t x 2.5m)

- Total width 1.4m
- Max working radius 15.52m
- Diesel powered and optional mains electric
- Zero length increase with electric option
- Operator control of outrigger extension
- Intelligent voice warning system
- Radio remote control as standard
- Working area limitation
- Slew limitation (optional)
- Intelligent throttle activation for economy and ecology



Safe load indicator

Max Boom Length 15.71m

Max Lifting Height 16m

Capacity 3.0t x 3.4m

Weight 4840 - 4990kg

Optional fly jib & searcher hook

Lifting capacity	700kg
Length	2017mm
Weight	50kg
Tilt angles	0°, 20°, 40°, 60°



The URW-506 offers an optimal combination of working flexibility and heavy lifting power. This crane is capable of lifting 3 tonnes at 3.4m or up to 4 tonnes with an optional 5 fall hook block. As with all the UNIC spider crane models carrying a safe load indicator, the URW-506's working area limitation device allows the operator to pre-define the working area giving greater control and safety in sensitive areas. On approaching these limits, function speeds are reduced and an audible alarm is given before operation stops.

REMOTES



Standard radio remote control



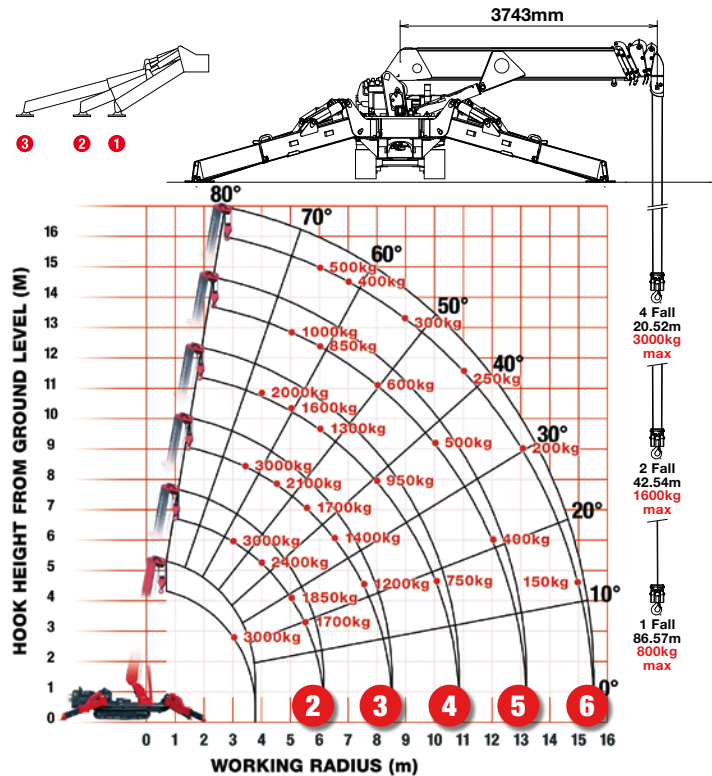
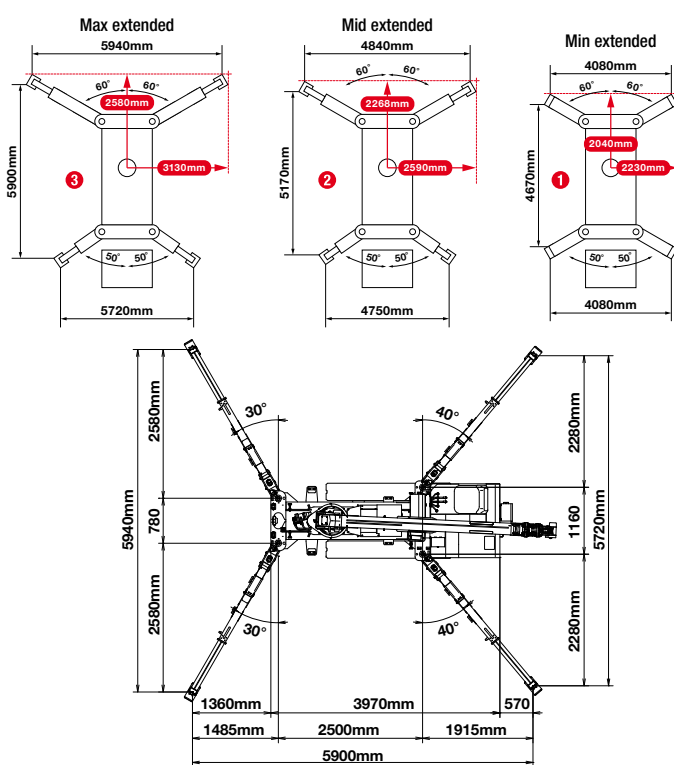
Optional radio remote control with digital feedback

CRANE SPECIFICATIONS

Crane capacity	capacity:	3.0t x 3.4m (506-1 4.0t x 2.5m with 5 fall hook block)
Max working radius	max:	15.52m
Max lifting height	approx:	16m (17.795m with fly jib, 18.465m with fixed hook)
Rope length	max:	20.52m (4 fall), 42.54m (2 fall), 86.57m (1 fall)
Dimensions	folded:	4870mm (l) x 1400mm (w) x 2035mm (h)
Weight	unladen:	4840kg (4990kg with electric option)
Point loadings	Due to the many variables involved, point loadings are only available on request	
Hook speed	approx:	17m/min (with 4 layers and 4 falls)
Telescopic system	boom length:	3.93 - 15.71m
	telescoping speed:	11.78m/35 seconds
	boom type:	6 section hydraulically telescoping boom, hexagonal box construction
Derricking angle/speed	approx:	0 - 80°/18.0 seconds
Slewing angle/speed	approx:	360° (continuous) 2.5min rpm
Traction system	drive:	hydrostatic 2-speed, stepless forward and reverse
	travel speed:	0 - 3km/h
	gradability:	23°
	track ground length:	1750mm
	track ground pressure:	45.1kPa (0.46kg/cm²)
	track width:	300mm
Engine	manufacturer:	Mitsubishi / Yanmar
	fuel:	diesel (electric dual power option)
	maximum output:	18kW (24.5PS) / 2100min rpm
	starting method:	electric
	tank capacity:	40 litres
Electric motor	power:	7.5kW
	voltage:	400v AC 50/60Hz
Standard equipment	computer controlled moment limiter (safe load indicator), radio remote control, overwinding alarm, computer controlled intelligent voice warning system, multi-function operation by radio remote control, intelligent throttle activation, automatic hook stow, overload warning alarms, overload warning lamps, working area limitation	
Optional equipment	1 fall hook block, 2 fall hook block, 5 fall hook block (URW-506-1), mains electric dual power (400v), low marking tracks, slew limitation, searcher hook small 500kg, searcher hook 700kg, fly jib 700kg with single part line, radio remote control with feedback display, data logging	

MINI SPIDER CRANE

RATED LOADS & OUTRIGGER POSITIONS



SECOND STAGE EXTENDED 3.93 - 6.33M BOOM LENGTH

Working radius	m	up to 2.5	3.0	3.4	4.0	4.5	5.0	5.5	6.0
Outrigger									
Max-extended	kg	3,000 (4,000)	3,000 (3,350)	3,000	2,400	2,100	1,850	1,700	1,550
Mid-extended	kg	3,000 (4,000)	3,000 (3,350)	3,000	2,400	2,100	1,850	1,700	1,400
Min-extended	kg	3,000 (4,000)	3,000 (3,350)	3,000	2,400	2,000	1,650	1,350	1,100

* Loads shown in blue are applicable for the 5 fall hook block URW-506-1 only. All other loads shown in black apply to both the standard URW-506 and the URW-506-1.

THIRD STAGE EXTENDED 6.33 - 8.72M BOOM LENGTH

Working radius	m	up to 3.0	3.4	4.0	4.5	5.0	5.5	6.0	6.5	7.0	7.5	8.53
Outrigger												
Max-extended	kg	3,000	3,000	2,400	2,100	1,850	1,700	1,550	1,400	1,300	1,200	1,000
Mid-extended	kg	3,000	3,000	2,400	2,100	1,850	1,700	1,400	1,200	1,050	850	620
Min-extended	kg	3,000	3,000	2,400	2,000	1,650	1,350	1,100	900	750	600	450

FOURTH STAGE EXTENDED 8.72 - 11.05M BOOM LENGTH

Working radius	m	up to 4.0	4.5	5.0	5.5	6.0	7.0	8.0	9.0	10.0	10.86
Outrigger											
Max-extended	kg	2,000	1,800	1,600	1,450	1,300	1,100	950	850	750	640
Mid-extended	kg	2,000	1,800	1,600	1,450	1,300	1,050	700	600	450	390
Min-extended	kg	2,000	1,800	1,600	1,350	1,100	750	500	400	300	250

FIFTH STAGE EXTENDED 11.05 - 13.38M BOOM LENGTH

Working radius	m	up to 5.0	5.5	6.0	7.0	8.0	9.0	10.0	11.0	12.0	13.19
Outrigger											
Max-extended	kg	1,000	920	850	700	600	550	500	450	400	350
Mid-extended	kg	1,000	920	850	700	600	520	450	390	300	250
Min-extended	kg	1,000	920	850	700	500	400	300	250	200	170

SIXTH STAGE EXTENDED 13.38 - 15.71M BOOM LENGTH

Working radius	m	up to 6.0	7.0	8.0	9.0	10.0	11.0	12.0	13.0	14.0	15.52
Outrigger											
Max-extended	kg	500	400	350	300	250	250	200	200	150	150
Mid-extended	kg	500	400	350	300	250	250	200	200	150	150
Min-extended	kg	500	400	350	300	250	230	200	170	150	100

SEARCHER HOOK SMALL - 500kg

Stowed position



In operation



Lifting capacity 500kg sections 1-5

280kg section 6

Length 800mm

Weight 20kg

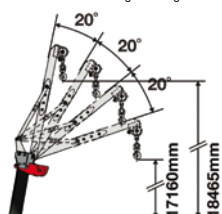
Tilt angles 0°, 20°, 40°, 60°

SEARCHER HOOK

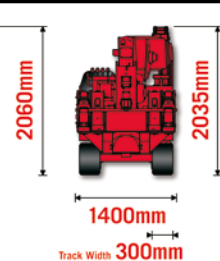
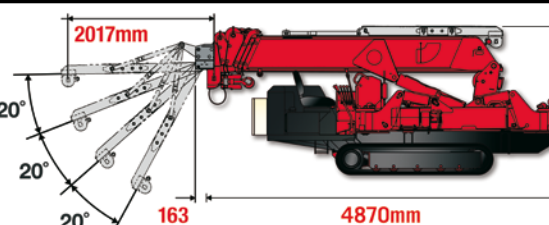
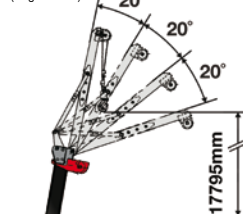
FLY JIB

DIMENSIONS

Length 2017mm (radius rated)
Maximum Load 350kg - 700kg



Maximum Load 350kg - 700kg
(angle rated)



URW-547 (4.0t x 2.5m)

- Total width 1.4m
- Max working radius 17.83m
- Diesel powered and optional mains electric
- Zero length increase with electric option
- Operator control of outrigger extension
- Intelligent voice warning system
- Radio remote control as standard
- Working area limitation
- Slew limitation (optional)
- Intelligent throttle activation for economy and ecology



Safe load indicator

Max Boom Length 18.02m

Max Lifting Height 18.2m

Capacity 4.0t x 2.5m

Weight 5010 - 5160kg



The new URW-547 offers extended reach, providing a maximum lifting height of 18.2 metres and a maximum lifting capacity of 4 tonnes as standard on the main boom. The outrigger footprint remains the same as the URW-506, maintaining its compact dimensions. An option of additional length is given with a quickly installed searcher hook, with angles varying for 0° to 60° and a maximum capacity of 500kgs.

REMOTES



Standard radio remote control



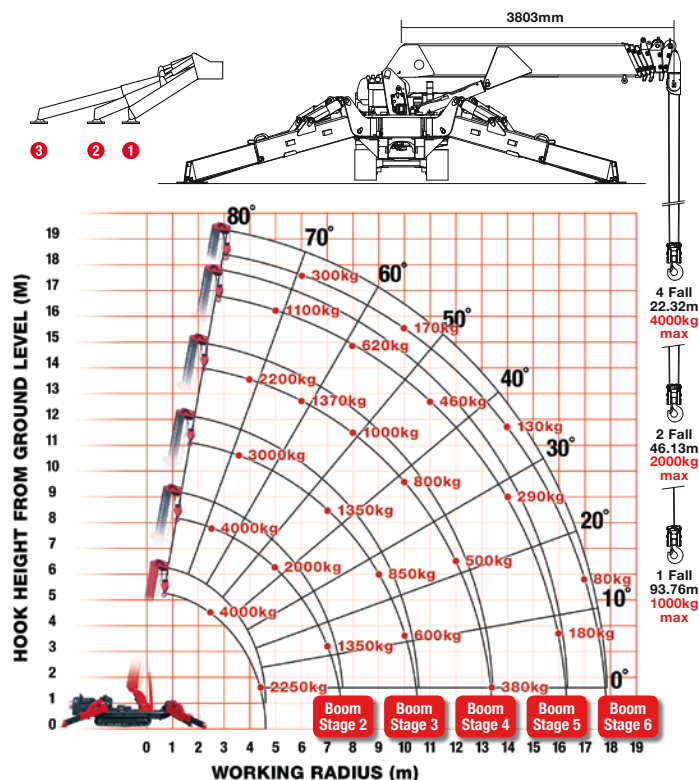
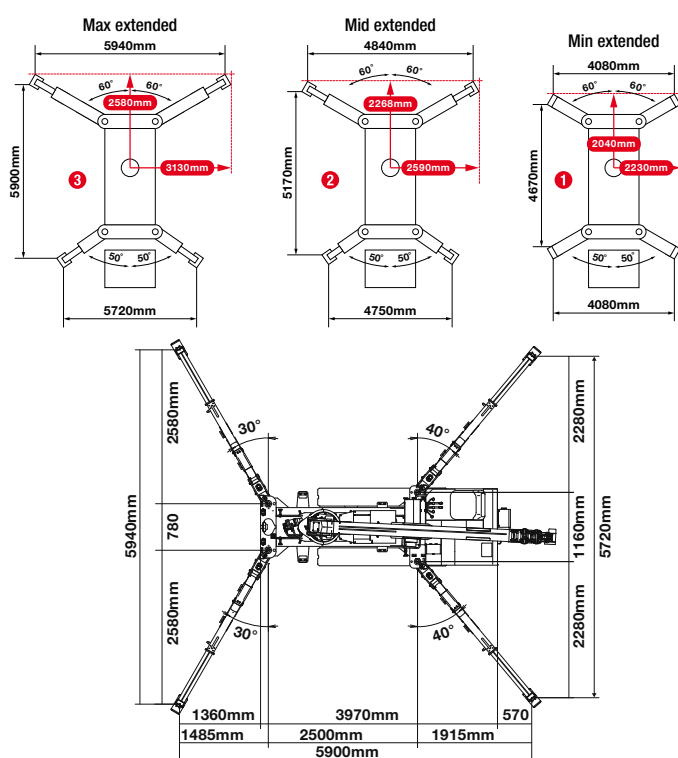
Optional radio remote control with digital feedback

CRANE SPECIFICATIONS

Crane capacity	capacity:	4.0t x 2.5m
Max working radius	max:	17.83m
Max lifting height	approx:	18.2m
Rope length	max:	22.32m (4 fall), 46.13m (2 fall), 93.76m (1 fall)
Dimensions	folded:	4955mm (l) x 1400mm (w) x 1980mm (h)
Weight	unladen:	5010kg (5160kg with electric option)
Point loadings	Due to the many variables involved, point loadings are only available on request	
Hook speed	approx:	14m/min (with 5 layers and 4 falls)
Telescopic system	boom length:	3.99 - 18.02m
	telescoping speed:	14.03m/35 seconds
	boom type:	7 section hydraulically telescoping boom, hexagonal box construction
Derricking angle/speed	approx:	0 - 80°/18.0 seconds
Slewing angle/speed	approx:	360° (continuous) 2.5min rpm
Traction system	drive:	hydrostatic 2-speed, stepless forward and reverse
	travel speed:	0 - 3km/h
	gradability:	23°
	track ground length:	1750mm
	track ground pressure:	47kPa (0.48kg/cm²)
Engine	track width:	300mm
	manufacturer:	Mitsubishi / Yanmar
	fuel:	diesel (electric dual power option)
	maximum output:	17.5kW (23.8PS) / 2100min rpm
	starting method:	electric
Electric motor	tank capacity:	40 litres
	power:	7.5kW
Standard equipment	voltage:	400v AC 50/60Hz
	computer controlled moment limiter (safe load indicator), radio remote control, overwinding alarm, computer controlled intelligent voice warning system, multi-function operation by radio remote control, intelligent throttle activation, automatic hook stow, overload warning alarms, overload warning lamps, working area limitation	
Optional equipment	1 fall hook block, 2 fall hook block, mains electric dual power (400v), low marking tracks, slew limitation, searcher hook small 500kg, radio remote control with feedback display, data logging	

MINI SPIDER CRANE

RATED LOADS & OUTRIGGER POSITIONS



SECOND STAGE EXTENDED 3.99 - 7.7M BOOM LENGTH

Working radius	m	up to 2.5	2.7	3.0	3.5	4.0	4.5	5.0	5.5	6.0	7.0	7.25	7.51
Outrigger													
Max-extended	kg	4,000	3,850	3,500	3,000	2,550	2,250	2,000	1,800	1,630	1,350	1,350	1,300
Mid-extended	kg	4,000	3,850	3,500	3,000	2,550	2,200	1,850	1,630	1,400	1,010	1,010	850
Min-extended	kg	4,000	3,850	3,500	3,000	2,550	2,100	1,640	1,320	1,080	750	750	620

THIRD STAGE EXTENDED 7.7 - 10.66M BOOM LENGTH

Working radius	m	up to 3.5	4.0	5.0	6.0	7.0	8.0	9.0	10.0	10.20	10.47
Outrigger											
Max-extended	kg	3,000	2,550	2,000	1,650	1,350	1,100	850	600	600	520
Mid-extended	kg	3,000	2,550	1,850	1,400	1,100	830	630	490	490	430
Min-extended	kg	3,000	2,550	1,650	1,150	840	620	460	350	350	300

FOURTH STAGE EXTENDED 10.66 - 13.57M BOOM LENGTH

Working radius	m	up to 4.0	4.5	5.0	6.0	7.0	8.0	9.0	10.0	11.0	12.0	13.0	13.38
Outrigger													
Max-extended	kg	2,200	1,900	1,700	1,370	1,150	1,000	900	800	660	500	410	380
Mid-extended	kg	2,200	1,800	1,600	1,300	1,050	850	700	550	450	360	290	260
Min-extended	kg	2,200	1,800	1,600	1,150	800	650	520	400	320	250	190	170

FIFTH STAGE EXTENDED 13.57 - 16.48M BOOM LENGTH

Working radius	m	up to 5.0	5.5	6.0	7.0	8.0	9.0	10.0	11.0	12.0	13.0	14.0	15.0	16.0	16.29
Outrigger															
Max-extended	kg	1,100	950	880	730	620	570	520	460	410	350	290	230	180	170
Mid-extended	kg	1,100	950	880	700	600	520	450	400	350	300	250	190	150	140
Min-extended	kg	1,100	950	850	700	500	420	390	340	290	230	180	140	100	100

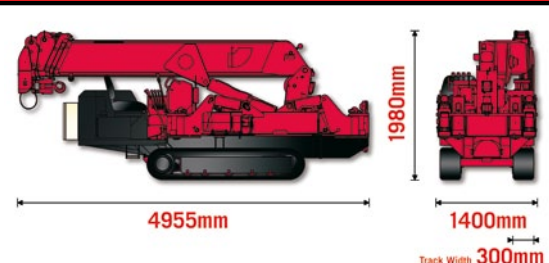
SIXTH STAGE EXTENDED 16.48 - 18.02M BOOM LENGTH

Working radius	m	up to 6.0	7.0	8.0	9.0	10.0	11.0	12.0	13.0	14.0	15.0	16.0	17.0	17.83
Outrigger														
Max-extended	kg	300	250	230	200	170	160	150	140	130	120	110	80	50
Mid-extended	kg	300	250	230	200	170	160	150	140	130	120	110	80	50
Min-extended	kg	300	250	230	200	170	160	150	140	130	120	110	80	50

SEARCHER HOOK SMALL - 500kg



DIMENSIONS



* Please note: The URW-547 lifting capacity information is based on boom stages, not boom sections.

URW-706 (6.0t x 3.0m)

- Total width 1.67m
- Max working radius 18.6m
- Diesel powered and optional mains electric
- Zero length increase with electric option
- Radio remote control as standard
- Working area limitation
- Stowable fly (extension) jib (optional)
- Searcher hook (optional)
- Slew limitation (optional)
- Intelligent throttle activation for economy and ecology



Safe load indicator

Max Boom Length 19.2m

Max Lifting Height 19.5m
(22.7m with extension jib)

Capacity 6.0t x 3.0m

Weight 7920 - 8310kg



The URW-706 sets the highest standard of lifting capability in the mini crane world. With a 6 tonne capacity at 3.0m and a hook height of 19.5m it is the highest capacity UNIC crane, yet at 1670mm wide it is still narrow enough to gain access through a standard double doorway. For added lifting flexibility the URW-706 also features an optional searcher hook and a 3.1m long swing away fly jib, providing a maximum hook height of 22.7m.

REMOTES



Standard radio remote control



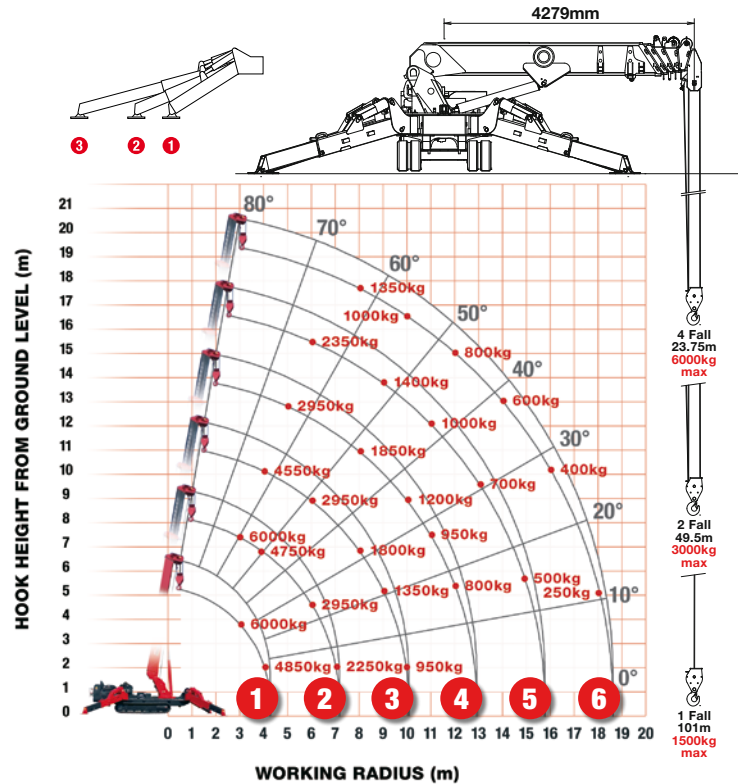
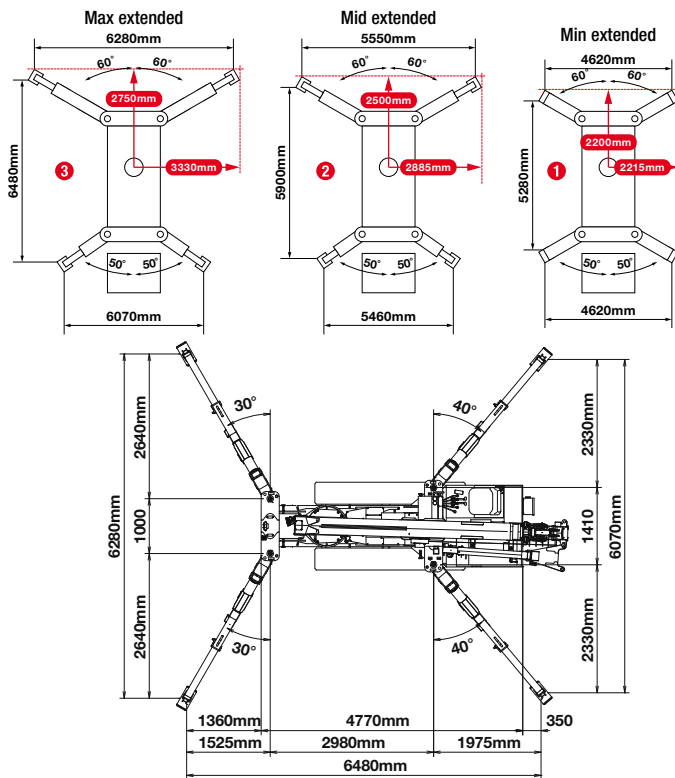
Optional radio remote control with digital feedback

CRANE SPECIFICATIONS

Crane capacity	capacity:	6.0t x 3.0m
Max working radius	max:	18.6m
Max lifting height	approx:	19.5m (22.7m with second stage fly jib)
Rope length	max:	23.75m (4 fall), 49.5m (2 fall), 101m (1 fall)
Dimensions	folded:	5610mm (l) x 1670mm (w) x 2185mm (h)
Weight	unladen:	7920kg + 160kg (8080kg with electric option) + 230kg (8310kg with searcher hook and fly jib attached)
Point loadings	Due to the many variables involved, point loadings are only available on request	
Hook speed	approx:	11m/min (with 5 layers and 4 falls)
Telescopic system	boom length:	4.80 - 19.20m
	telescoping speed:	14.4m/52 seconds
	boom type:	6 section hydraulically telescoping boom, hexagonal box construction
Derricking angle/speed	approx:	0 - 80°/16.0 seconds
Slewing angle/speed	approx:	360° (continuous) 2.5min rpm
Traction system	drive:	hydrostatic 2-speed, stepless forward and reverse
	travel speed:	0 - 2.9km/h
	gradability:	23°
	track ground length:	2240mm
	track ground pressure:	43.6kPa (0.44kg/cm²)
	track width:	400mm
Engine	manufacturer:	Mitsubishi
	fuel:	diesel (electric dual power option)
	maximum output:	23.5kW (32.0PS) / 2500min rpm
	starting method:	electric
	tank capacity:	74 litres
Electric motor	power:	7.5kW
	voltage:	400v AC 50/60hz
Standard equipment	computer controlled moment limiter (safe load indicator), radio remote control, overwinding alarm, computer controlled intelligent voice warning system, multi-function operation by radio remote control, intelligent throttle activation, automatic hook slow, overload warning alarms, overload warning lamps, working area limitation	
Optional equipment	1 fall hook block, 2 fall hook block, mains electric dual power (400v), low marking tracks, slew limitation, searcher hook 800kg, fly jib 800kg with single part line, radio remote control with feedback display, data logging	

MINI SPIDER CRANE

RATED LOADS & OUTRIGGER POSITIONS



FIRST STAGE EXTENDED 4.8M BOOM LENGTH

Working radius	m	up to 2.7	3.0	3.5	4.0	4.3
Outrigger						
Max-extended	kg	6,000	6,000	5,450	4,850	3,950
Mid-extended	kg	6,000	6,000	5,450	4,850	3,950
Min-extended	kg	6,000	6,000	5,450	4,550	3,750

SECOND STAGE EXTENDED 4.8 - 7.7M BOOM LENGTH

Working radius	m	up to 2.0	3.0	3.5	4.0	5.0	6.0	7.0	7.2
Outrigger									
Max-extended	kg	6,000	6,000	5,350	4,750	3,750	2,950	2,250	2,000
Mid-extended	kg	6,000	6,000	5,350	4,750	3,750	2,450	1,700	1,550
Min-extended	kg	6,000	6,000	5,350	4,650	2,550	1,650	1,150	1,050

THIRD STAGE EXTENDED 7.7 - 10.6M BOOM LENGTH

Working radius	m	up to 2.7	4.0	5.0	6.0	7.0	8.0	9.0	10.0	10.1
Outrigger										
Max-extended	kg	4,550	4,550	3,650	2,950	2,400	1,800	1,350	950	950
Mid-extended	kg	4,550	4,550	3,650	2,550	1,750	1,300	950	700	700
Min-extended	kg	4,550	4,550	2,650	1,700	1,200	850	650	450	400

FOURTH STAGE EXTENDED 10.6 - 13.5M BOOM LENGTH

Working radius	m	up to 5.0	6.0	7.0	8.0	9.0	10.0	11.0	12.0	12.9
Outrigger										
Max-extended	kg	2,950	2,550	2,150	1,850	1,500	1,200	950	800	450
Mid-extended	kg	2,950	2,550	1,850	1,400	1,100	850	650	550	400
Min-extended	kg	2,750	1,850	1,300	1,000	750	550	430	330	240

FIFTH STAGE EXTENDED 13.5 - 16.3M BOOM LENGTH

Working radius	m	up to 6.0	8.0	9.0	10.0	11.0	12.0	13.0	14.0	15.0	15.8
Outrigger											
Max-extended	kg	2,350	1,700	1,400	1,200	1,000	850	700	600	500	400
Mid-extended	kg	2,350	1,500	1,150	950	750	600	500	400	300	250
Min-extended	kg	1,950	1,050	800	650	500	400	300	230	170	130

SIXTH STAGE EXTENDED 16.3 - 19.2M BOOM LENGTH

Working radius	m	up to 8.0	10.0	12.0	14.0	16.0	18.0	18.6
Outrigger								
Max-extended	kg	1,350	1,000	800	600	400	250	200
Mid-extended	kg	1,350	1,000	650	450	300	200	150
Min-extended	kg	1,100	700	450	280	170	90	60



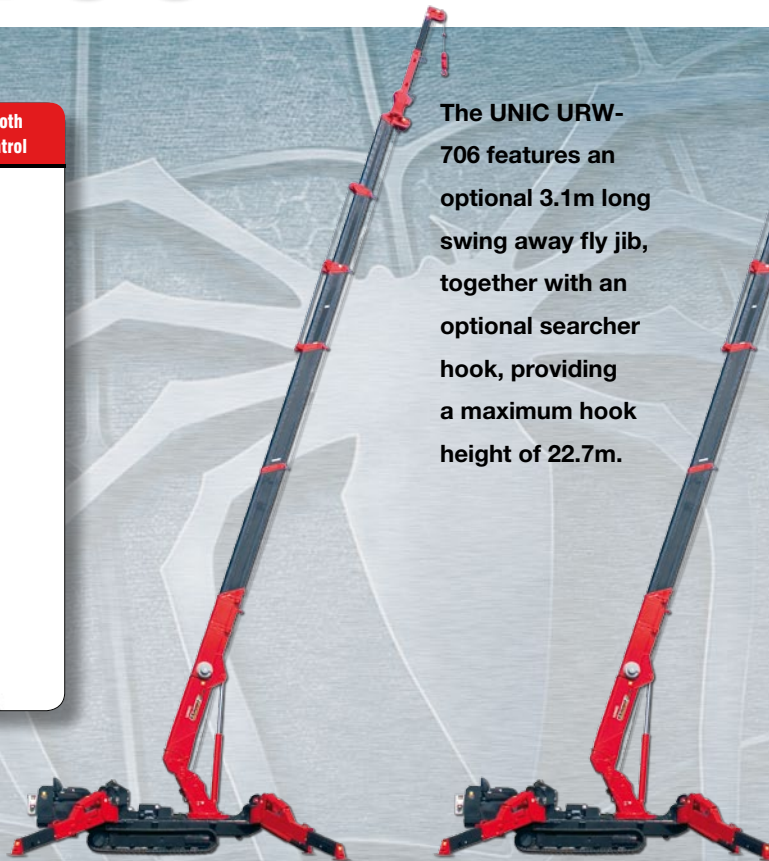
URW-706 (6.0t x 3.0m)

Shockless damping system for smooth stop when operated via remote control

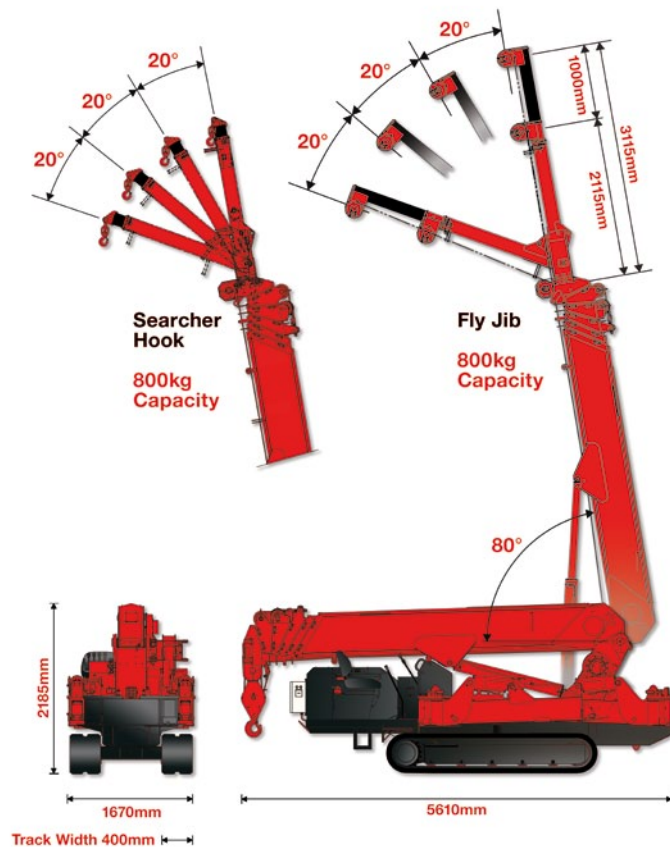


The UNIC URW-706 features an optional 3.1m long swing away fly jib, together with an optional searcher hook, providing a maximum hook height of 22.7m.

The standard UNIC URW-706 provides a maximum hook height of 19.5m.



DIMENSIONS

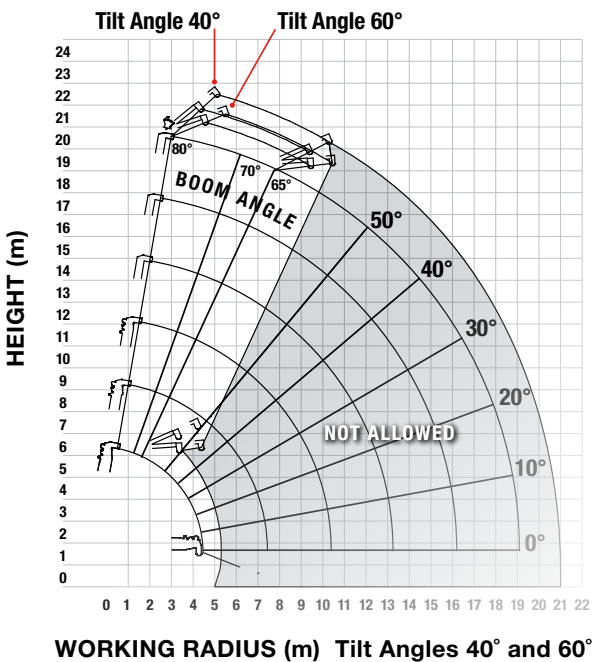
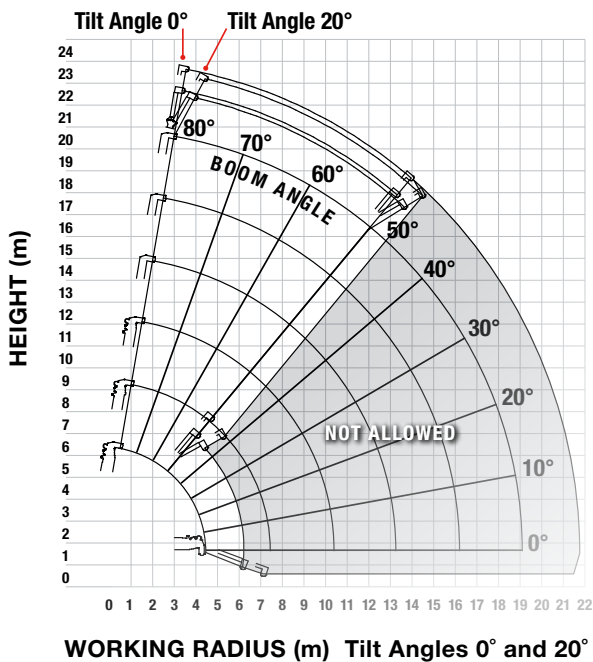


MINI SPIDER CRANE







OPTIONAL FLY JIB WORKING RANGE - 0° & 20°


OPTIONAL FLY JIB WORKING RANGE - 40° & 60°

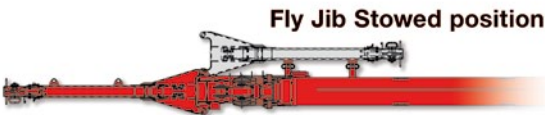


Note: The above figures are based on a no-load condition and do not include the deflection of the boom.

FLY JIB - ANGLE RATED				
ANGLE RATED	NET RATED LOADS (kg) AT EXTENSION JIB ANGLE			
				
BOOM ANGLE	0°	20°	40°	60°
80°	800	800	600	600
75°	800	800	600	600
70°	700	700	500	500
65°	600	600	400	400
60°	500	500	NOT ALLOWED	
55°	400	400		
50°	300	300		
	Lifting capacity		800kg	
	Jib length		retracted:	2.11m
			extended:	3.11m
	Weight		205kg	
	Tilt angles		0°, 20°, 40°, 60°	



SEARCHER HOOK - RADIUS RATED			
RADIUS RATED	SEARCHER HOOK NET RATED LOADS (kg)		
			
WORKING RADIUS m	OUTRIGGERS MAX-EXTENDED	OUTRIGGERS MID-EXTENDED	OUTRIGGERS MIN-EXTENDED
7.0	800	800	800
8.0	800	800	610
9.0	800	700	420
10.0	800	550	250
10.5	800	490	200
11.0	650	430	160
11.5	550	370	120
12.0	470	310	100
13.0	330	230	NOT ALLOWED
14.0	260	150	
15.0	210	100	
	Lifting capacity	800kg	
	Length	2.21m	



TECHNICAL FEATURES & OPTIONS

Multi operations via remote control



Emergency lowering device option



Optional mains power (095, 295, 376 & 506)



Optional radio remote with digital feedback



Auto hook stow



295 Searcher hook & fly jib option



376/506 Searcher hook & fly jib option



Dismantles and self-assembles



Overload warning lamps/auto stop/alarm



295 Full safe load indicator (SLI)



376/506/547/706 SLI



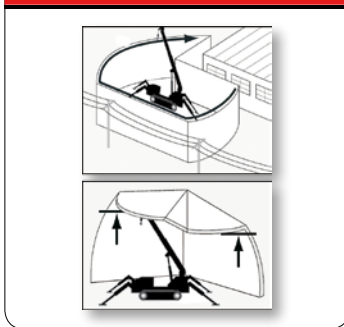
Data logger option



Working area limitation



Variable radius & height limits option



Free zone (2 walls) & fixed height limit option



Optional low marking tracks



Over-lowering prevention device



Anti two-block system



Level operation on uneven sites



Optional LPG Gas



ACCESSORIES

APPLICATIONS

Single fall & two fall blocks



Vacuum lifters 320kg



Glass Lifting



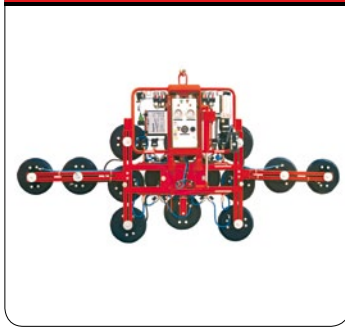
Glass Lifting



Vacuum lifters 500kg



Vacuum lifters 1000kg



Steelwork



Steelwork



Stone Clamps



Stone lifters



Rail Maintenance



Rail Maintenance



Robotic vacuum heads



Robotic vacuum heads



Aviation



Aviation



Below ground man baskets



Outrigger mats



Construction



Construction





UNIC

CRANES EUROPE

HEAD OFFICE: Units 8 - 10, Ridgeway, Drakes Drive, Long Crendon Industrial Estate, Long Crendon, Buckinghamshire, HP18 9BF
Telephone: +44 (0)1844 202071 **Fax:** +44 (0)1844 202075

UK NORTHERN DEPOT: Presentation House, Broadgate, Broadway Business Park, Oldham, OL9 0JA
Telephone: +44 (0)161 683 2580 **Fax:** +44 (0)161 683 4444

Email: sales@uniccranes.com **Web:** www.uniccranes.com



UNIC Cranes Europe is part of
the GGR Group of Companies

