

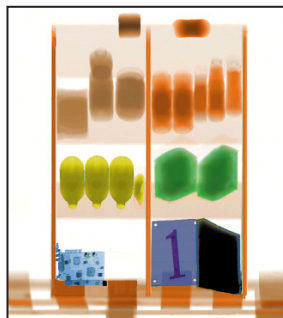


XIS-100XD

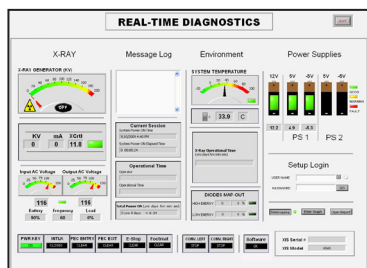
TSA QUALIFIED

Low Conveyor for Heavy Object Screening Large Baggage and Parcel Inspection

6 Color Imaging



Real-Time Diagnostics



The XIS-100XD is a redesigned 100X with the same tunnel size of **1010 x 1010 mm** (39.8" x 39.8"). With a repositioned 180 kV generator and its **low conveyor height** of 300 mm (1 ft), the XIS-100XD has found placement at hotels, courthouses, customs facilities and airports, but is **ideal for all heavy parcel inspection**.

The XIS-100XD creates a top-down screening perspective while enabling heavy objects to be **easily loaded** on and off the conveyor.

The XIS-100XD is the epitome of **technological innovation** for increased convenience and efficiency. The XIS-100XD offers **optimized technology with minimum inspection time**.

Astrophysics has the **fastest delivery times**. We offer immediate screening solutions with **unparalleled order flexibility and customization**.

All XIS Systems are equipped with **Real-Time Diagnostics**, a unique Astrophysics feature which allows users to monitor their machine health, thus greatly **increasing the system lifespan**.

An exclusive Astrophysics standard feature, **6 Color Imaging** enables operators to view screened objects in 6 colors, with each color correlating to a specific range of Atomic Z-Numbers. 6 Color Imaging enables operators to achieve **optimal material identification** and improve throughput with more effective screening technology.

Backed by a team of experts with more than **100 years of combined industry experience**, Astrophysics has the expansive knowledge you expect, all with a focus on X-Ray that assures customers the **XIS product is the industry best**.

The XIS Series features **top-of-the-line software and hardware technology** establishing Astrophysics as the **leader in innovation and quality**.

Astrophysics is headquartered in the United States, but maintains multiple field offices worldwide for **localized support**.

For your convenience, we also retain a dedicated Sales and Service team committed to providing a **personalized and timely response 24/7**.

General Specifications

- Tunnel Size: 1010 mm x 1010 mm
(W x H) 39.8" x 39.8"
- Dimensions: 2367 mm x 1275 mm x 1909 mm
(L x W x H) 93.2" x 50.2" x 75.2"
- Shipping Dimensions: 1905 mm x 1473 mm x 2235 mm
(L x W x H) 75.0" x 58.0" x 88.0"
- Net Weight²: 884 kgs (1940 lbs)
- Shipping Weight²: 1104 kgs (2434 lbs)
- Conveyor Speed: 0.23 m/s (44 ft/min) In Both Directions
- Conveyor Height: 300 mm (12.0") from floor
- Conveyor Capacity: 200 kgs (440 lbs) Evenly Distributed Load
- Construction: Custom Steel Frame / Panels

Technical

- Sensitivity: 40 AWG Typical, 38 AWG Standard
- Spatial Resolution: 1.6 mm Horizontal, 1.6 mm Vertical
- Penetration¹: 37 mm Steel Typical, 35 mm Standard
- Contrast Sensitivity: 24 Visible Levels, 4096 Gray Level

X-Ray Generator

- Voltage: 180 kV, Operating at 165 kV
- Tube Current: 1.2 mA
- Cooling: Sealed Di-Electric Oil Bath with Forced Air
- Duty Cycle: 100%, No Warm-Up Procedure Required
- Beam Direction: Vertically Downward
- Detector: 2304 Channels in an L-Shaped Array

Computer

- Processor: Intel Core2 Quad, 2.66 Ghz, 1333 MHz
- Memory: 2 GB RAM at 1333 MHz
- Storage: 250 GB HDD
- Video Card: 256 MB Video Card, Dual Digital Display
- Platform: Windows XP Pro
- Backup: Uninterrupted Power Supply (20 min)

Video

- Display Type: Dual 25" LCD Color Monitors
- Display Resolution: 1600 x 1200; 24 bit/pixel Color

Environmental

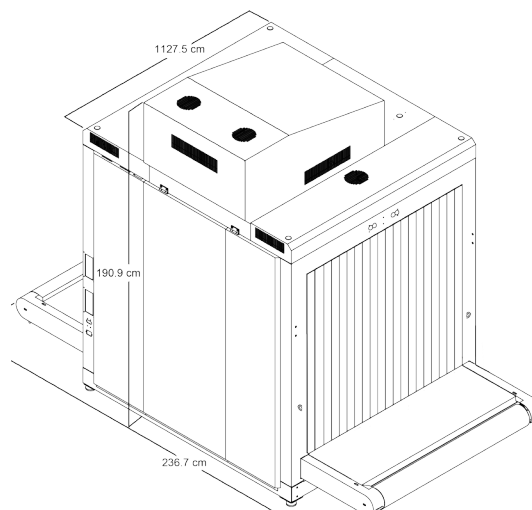
- Operating Temperature: 0°C - 40°C \ 32°F - 104°F
- Storage Temperature: -20°C - 60°C \ -4°F - 140°F
- Humidity: Up to 95% Non-Condensing

Electrical

- Power Requirements: 110VAC: 96-132 VAC, 60 HZ. 15 Amp Max
220VAC: 183-253 VAC, 50 Hz. 10 Amp Max

Health and Safety

- Compliant with USFDA, Center for Devices and Radiation Health Standards for Cabinet X-Ray Systems (21-CFR 1020.40).
- Typical Radiation leakage is less than 0.1 mR/hr (Leakage less than 0.5 mR/hr permitted by the Federal Standard).

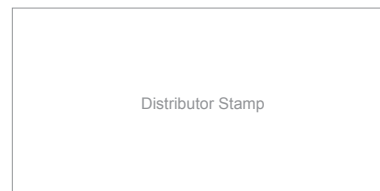


Standard Features

- 6 Color Imaging
- 9 Quadrant Zoom
- Atomic Z-Number Measurement
- Auto Image Archiving (50,000 Images)
- Baggage Counter
- Color and Black / White Imaging
- Continuous Scanning
- Continuous Zoom 2x to 32x
- Density Alert
- Edge-Enhancement Imaging
- Geometric Image Distortion Correction
- High Penetration Function
- Heavy Duty Roller Casters
- Image Annotation
- Image Review (100 Images)
- Manual Archive
- Material Discrimination
- Multi-Tier Accessibility
- Network Ready
- Organic/Inorganic Imaging
- Operator Training Program
- Picture Perfect
- Print Image Capable
- Pseudo Color
- Real-Time Image Manipulation
- Real-Time Self Diagnostics
- Reverse Monochrome
- Vertical Zoom Panning

Optional Features³

- Advance Auto Image Archiving (100,000 Images)
- ASTM 10 Stepwedge/ASTM F0792-01E2 Test Case
- Custom Paint
- Entry / Exit Roller Tables, 0.5 m increment
- Footmat
- Local Language Support (Arabic, Chinese, French, Spanish, and more)
- Radiation Meter
- Remote Workstation Extension
- Screener Assist Threat Detection Software
- Supervisor Workstation
- Suspect Search Station
- Threat Image Projection Software
- Tropical Kit (Up to 50°C / 122°F Operation)



¹As tested on Astrophysics Inc. Test Piece

²Weight of the System may vary depending on customization.

³Optional Accessories may affect lead time, price, and weight of XIS-100XD. Please contact your Astrophysics Sales Representative for more information.

Due to continued product research and development, Astrophysics Inc. reserves the right to amend all technical specifications without prior notice.