

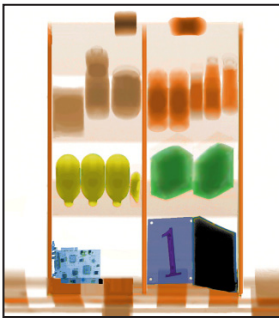


XIS-6040M

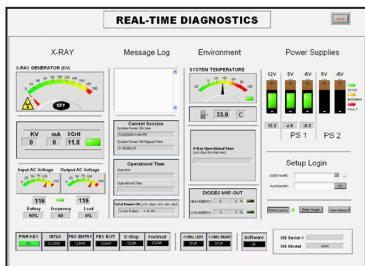
High Mobility Screening

Checkpoint Security: Small Baggage and Parcel Inspection

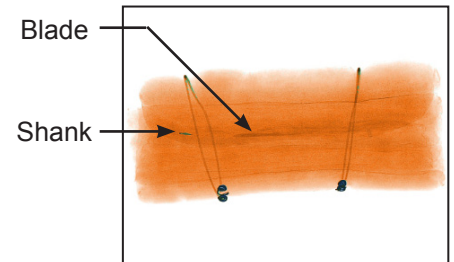
6 Color Imaging



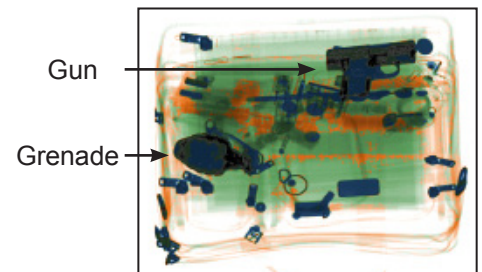
Real-Time Diagnostics



Prison Mattress



Carry-On



The XIS-6040M (Mobile) is an X-Ray Inspection System with tunnel dimensions of **600 x 400 mm (23.6" x 15.7")**. The XIS-6040M is specifically designed for easy relocation at **prisons, ships, banks, courthouses, government facilities** and other high security checkpoints where **rapid deployment** and **quick system operation** is essential.

The XIS-6040M features **heavy duty pneumatic wheels, stainless steel handle bars** and a **lockable operator control panel** which folds seamlessly into the system when not in use.

The XIS-6040M includes a powerful **160 kV generator**, and a design that enables fast maneuvering for an **immediate screening solution**.

Astrophysics has the **fastest delivery times**. We offer immediate screening solutions with **unparalleled order flexibility and customization**.

All XIS Systems are equipped with **Real-Time Diagnostics**, a unique Astrophysics feature which allows users to monitor their machine health, thus greatly **increasing the system lifespan**.

An exclusive Astrophysics standard feature, **6 Color Imaging** enables operators to view screened objects in 6 colors, with each color correlating to a specific range of Atomic Z-Numbers. **6 Color Imaging** enables operators to achieve **optimal material identification** and improve throughput with more effective screening technology.

Backed by a team of experts with more than **100 years of combined industry experience**, Astrophysics has the expansive knowledge you expect, all with a focus on x-ray that assures customers the **XIS product is the industry best**.

The XIS Series features **top-of-the-line software and hardware technology** establishing Astrophysics as the **leader in innovation and quality**.

Astrophysics is headquartered in the United States, but maintains multiple field offices worldwide for **localized support**.

For your convenience, we also retain a dedicated Sales and Service team committed to providing a **personalized and timely response 24/7**.

General Specifications

- Tunnel Size: 600 mm x 400 mm
(W x H) 23.6" x 15.7"
- Dimensions: 1420 mm x 849 mm x 1400 mm
(L x W x H) 55.9" x 33.4" x 55.2"
- Shipping Dimensions: 1524 mm x 965 mm x 1676 mm
(L x W x H) 60.0" x 38.0" x 66.0"
- Net Weight²: 389 kgs (856 lbs)
- Shipping Weight²: 489 kgs (1076 lbs)
- Conveyor Speed: 0.23 m/s (44 ft/min) In Both Directions
- Conveyor Height: 851 mm (33.5") from floor
- Conveyor Capacity: 165 kgs (363 lbs) Evenly Distributed Load
- Construction: Custom Steel Frame / Panels

Technical

- Sensitivity: 40 AWG Typical, 38 AWG Standard
- Spatial Resolution: 1.0 mm Horizontal, 1.0 mm Vertical
- Penetration¹: 39 mm Steel Typical, 37 mm Standard
- Contrast Sensitivity: 24 Visible Levels, 4096 Gray Level

X-Ray Generator

- Voltage: 160 kV Operating at 150 kV
- Tube Current: 0.7 mA
- Cooling: Sealed Di-Electric Oil Bath with Forced Air
- Duty Cycle: 100%, No Warm-Up Procedure Required
- Beam Direction: Diagonally Upward
- Detector: 1152 Channels in an L-Shaped Array

Computer

- Processor: Intel Core2 Quad, 2.66 Ghz, 1333 MHz
- Memory: 2 GB RAM at 1333 MHz
- Storage: 250 GB HDD
- Video Card: 256 MB Video Card, Dual Digital Display
- Platform: Windows XP Pro
- Backup: Uninterrupted Power Supply (20 min)

Video

- Display Type: Single 19" LCD Color Monitors
- Display Resolution: 1280 x 1024; 24 bit/pixel Color

Environmental

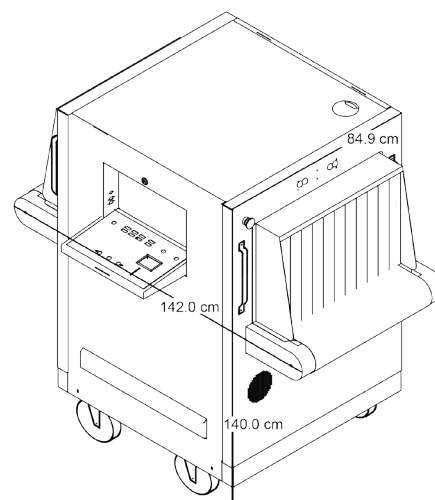
- Operating Temperature: 0°C - 40°C \ 32°F - 104°F
- Storage Temperature: -20°C - 60°C \ -4°F - 140°F
- Humidity: Up to 95% Non-Condensing

Electrical

- Power Requirements: 110VAC: 96-132 VAC, 60 HZ. 15 Amp Max
220VAC: 183-253 VAC, 50 Hz. 10 Amp Max

Health and Safety

- Compliant with USFDA, Center for Devices and Radiation Health Standards for Cabinet X-Ray Systems (21-CFR 1020.40).
- Typical Radiation leakage is less than 0.1 mR/hr (Leakage less than 0.5 mR/hr permitted by the Federal Standard).

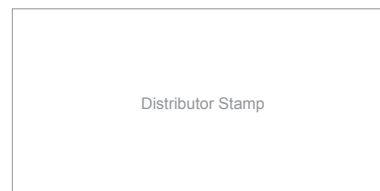


Standard Features

- 6 Color Imaging
- 9 Quadrant Zoom
- Atomic Z-Number Measurement
- Auto Image Archiving (50,000 Images)
- Baggage Counter
- Color and Black / White Imaging
- Continuous Scanning
- Continuous Zoom 2x to 32x
- Density Alert
- Edge-Enhancement Imaging
- Geometric Image Distortion Correction
- High Penetration Function
- Heavy Duty Pneumatic Casters
- Image Annotation
- Image Review (100 Images)
- Manual Archive
- Material Discrimination
- Multi-Tier Accessibility
- Network Ready
- Organic/Inorganic Imaging
- Operator Training Program
- Picture Perfect
- Print Image Capable
- Pseudo Color
- Real-Time Image Manipulation
- Real-Time Self Diagnostics
- Reverse Monochrome
- Vertical Zoom Panning

Optional Features³

- 25" LCD Monitors
- Advance Auto Image Archiving (100,000 Images)
- ASTM 10 Stepwedge/ASTM F0792-01E2 Test Case
- Custom Paint
- Entry / Exit Roller Tables, 0.5 m increment
- Footmat
- Local Language Support (Arabic, Chinese, French, Spanish, and more)
- Radiation Meter
- Remote Configuration
- Screener Assist Threat Detection Software
- Supervisor Workstation
- Suspect Search Station
- Threat Image Projection Software
- Tropical Kit (Up to 50°C / 122°F Operation)



¹As tested on Astrophysics Inc. Test Piece.

²Weight of the System may vary depending on customization.

³Optional Accessories may affect lead time, price, and weight of XIS-6040. Please contact your Astrophysics Sales Representative for more information.

Due to continued product research and development, Astrophysics Inc. reserves the right to amend all technical specifications without prior notice.