



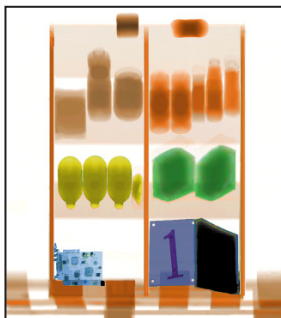
# XIS-6545DV

**TSA QUALIFIED**

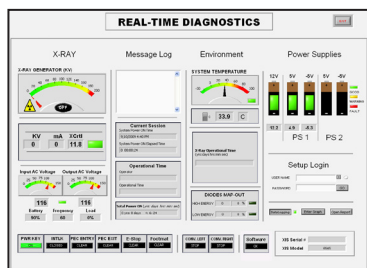
## Dual View Technology

## Checkpoint Security: Baggage and Parcel Inspection

### 6 Color Imaging



### Real-Time Diagnostics



The XIS-6545DV is a dual view X-Ray Inspection System with tunnel dimensions **651 x 454 mm (25.6" x 17.9")**. Designed for **high threat security locales**, the XIS-6545DV is ideal for airports, government facilities, ports, hospitals, and banks.

The XIS-6545DV features **dual X-Ray generators** to create two different image perspectives which can be manipulated independently. By utilizing **dual view technology**, alongside 6 Color Imaging and Atomic Z-Number Measurement, the XIS-6545DV provides **unparalleled threat identification**.

Ultimately, the XIS-6545DV maximizes throughput and **enhances detection** in **locations where time efficiency and high security screening is crucial**.

Astrophysics has the **fastest delivery times**. We offer immediate screening solutions with **unparalleled order flexibility and customization**.

All XIS Systems are equipped with **Real-Time Diagnostics**, a unique Astrophysics feature which allows users to monitor their machine health, thus greatly **increasing the system lifespan**.

An exclusive Astrophysics standard feature, **6 Color Imaging** enables operators to view screened objects in 6 colors, with each color correlating to a specific range of Atomic Z-Numbers. 6 Color Imaging enables operators to achieve **optimal material identification** and improve throughput with more effective screening technology.

Backed by a team of experts with more than **100 years of combined industry experience**, Astrophysics has the expansive knowledge you expect, all with a focus on X-Ray that assures customers the **XIS product is the industry best**.

The XIS Series features **top-of-the-line software and hardware technology** establishing Astrophysics as the **leader in innovation and quality**.

Astrophysics is headquartered in the United States, but maintains multiple field offices worldwide for **localized support**.

For your convenience, we also retain a dedicated Sales and Service team committed to providing a **personalized and timely response 24/7**.

## General Specifications

• Tunnel Size:	651 mm x 454 mm (W x H)
• Dimensions:	2130 mm x 1064 mm x 1290 mm (L x W x H)
• Shipping Dimensions:	2794 mm x 1219 mm x 1830 mm (L x W x H)
• Net Weight <sup>2</sup> :	800 kgs (1760 lbs)
• Shipping Weight <sup>2</sup> :	1104 kgs (2429 lbs)
• Conveyor Speed:	0.23 m/s (44 ft/min) In Both Directions
• Conveyor Height:	730 mm (28.7") From Floor
• Conveyor Capacity:	165 kgs (363 lbs) Evenly Distributed Load
• Construction:	Custom Steel Frame / Panels

## Technical

• Sensitivity:	41 AWG Typical, 40 AWG Standard
• Spatial Resolution:	1.0 mm Horizontal, 1.0 mm Vertical
• Penetration <sup>1</sup> :	41 mm Steel Typical, 39 mm Standard
• Contrast Sensitivity:	24 Visible Levels, 4096 Gray Level
• ASTM F792	Test 1: 40 AWG <sup>4</sup> Test 3: 1 mm Horizontal/Vertical <sup>4</sup> Test 4: 34 mm <sup>4</sup>

## X-Ray Generator

• Voltage:	Dual 180 kV, Operating at 165 kV
• Tube Current:	1.2 mA
• Cooling:	Sealed Di-Electric Oil Bath with Forced Air
• Duty Cycle:	100%, No Warm-Up Procedure Required
• Beam Orientation:	Diagonally Upward
• Detector:	Dual 1280 Channels in an L-Shaped Array

## Computer

• Processor:	Intel Core2 Quad, 2.66 Ghz, 1333 MHz
• Memory:	2 GB RAM at 1333 MHz
• Storage:	250 GB HDD
• Video Card:	256 MB Video Card, Dual Digital Display
• Platform:	Windows XP Pro
• Backup:	Uninterrupted Power Supply (20 min)

## Video

• Display Type:	Dual 19" LCD Color Monitors
• Display Resolution:	1280 x 1024; 24 bit/pixel Color

## Environmental

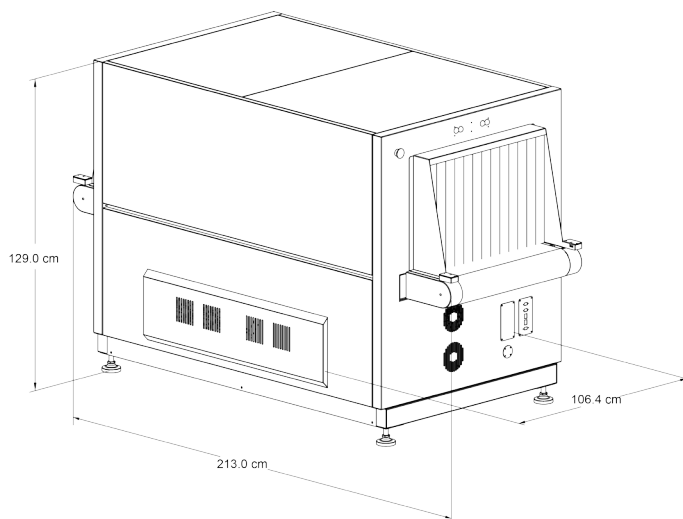
• Operating Temperature:	0°C - 40°C \ 32°F - 104°F
• Storage Temperature:	-20°C - 60°C \ -4°F - 140°F
• Humidity:	Up to 95% Non-Condensing

## Electrical

• Power Requirements:	110VAC: 96-132 VAC, 60 HZ. 20 Amp Max 220VAC: 183-253 VAC, 50 Hz. 15 Amp Max
-----------------------	---

## Health and Safety

- Compliant with USFDA, Center for Devices and Radiation Health Standards for Cabinet X-Ray Systems (21-CFR 1020.40).
- Typical Radiation leakage is less than 0.1 mR/hr (Leakage less than 0.5 mR/hr permitted by the Federal Standard).

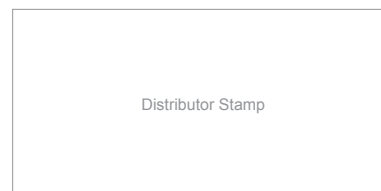


## Standard Features

- 6 Color Imaging
- 9 Quadrant Zoom
- Atomic Z-Number Measurement
- Auto Image Archiving (50,000 Images)
- Baggage Counter
- Color and Black / White Imaging
- Continuous Scanning
- Continuous Zoom 2x to 32x
- Density Alert
- Edge-Enhancement Imaging
- Geometric Image Distortion Correction
- High Penetration Function
- Heavy Duty Roller Casters
- Image Annotation
- Image Review (100 Images)
- Manual Archive
- Material Discrimination
- Multi-Tier Accessibility
- Network Ready
- Organic/Inorganic Imaging
- Operator Training Program
- Picture Perfect
- Print Image Capable
- Pseudo Color
- Real-Time Image Manipulation
- Real-Time Self Diagnostics
- Reverse Monochrome
- Vertical Zoom Panning

## Optional Features<sup>3</sup>

- 25" LCD Monitors
- Advance Auto Image Archiving (100,000 Images)
- ASTM 10 Stepwedge/ASTM F0792-01E2 Test Case
- Custom Paint
- Entry / Exit Roller Tables, 0.5 m increment
- Footmat
- Heavy Duty Rubber Casters Mobility Kit
- Local Language Support (Arabic, Chinese, French, Spanish, and more)
- Radiation Meter
- Remote Configuration
- Screener Assist Threat Detection Software
- Supervisor Workstation
- Suspect Search Station
- Threat Image Projection Software
- Tropical Kit (Up to 50°C / 122°F Operation)



<sup>1</sup>As tested on Astrophysics Inc. Test Piece.

<sup>2</sup>Weight of the System may vary depending on customization.

<sup>3</sup>Optional Accessories may affect lead time, price, and weight of XIS-6545DV. Please contact your Astrophysics Sales Representative for more information.

<sup>4</sup>Maximum Values on ASTM F792 Test Piece.

Due to continued product research and development, Astrophysics Inc. reserves the right to amend all technical specifications without prior notice.